

899 Heavy & Indust. Eq.



2017 Prime Tech 175 forestry mulcher: 1100 hours, \$185,000. Jefferson, OR. 503-932-1149, 503-930-7834



John Deere 310D Backhoe, Enclosed Cab, 4X4, Standard Stick, Two Buckets, 2300 Hours, Asking \$32,500.00. Sandy, OR. Call Pepe: 503-544-3232; Call Pat: 503-407-9062

Moroooka MST2000 Track Carrier/ Dumper. Rumble Gate. Approximately 6-7 yard Capacity. \$28,995 Or Trade for CAT with winch and canopy. Nehalem, OR. 503-322-0219 or tidegates@yahoo.com

1997 SNORKEL Lift TB 60A Manlift: 6553 hours, 4x2, 4 cylinder, Ford gas, \$5000 in new parts including new electronic carburetor and both joystick controls. Good condition, \$15,000. Junction-City, OR. 541-513-9600

NWTL Inc Heavy Haul & Trucking. Travis Dispatch 503-849-6867 Services: Multi-Axle Lowboy, Heavy Haul, Heavy Equipment Recovery, Equipment Transport, Agriculture Equipment, Construction Equipment, Forestry Equipment, All Lower 48 States Hourly and Mileage Rates Available, Sandy, OR.

Case 850K Dozer, 6 way Blade, enclosed ROPS, Multi Shank Ripper, 4840 Hours, Asking \$69,950.00. Sandy, OR. Call Pepe: 503-544-3232; Call Pat: 503-407-9062

Case 850K Dozer, 6 way Blade, enclosed ROPS, Multi Shank Ripper, 4840 Hours, Asking \$69,950.00. Sandy, OR. Call Pepe: 503-544-3232; Call Pat: 503-407-9062

Link-Belt 210 X2 Excavator: Hydraulic Thumb, Quick Connect, 62" Muck Bucket, Isuzu Engine, Asking \$65,000. Sandy, OR. Call Pepe: 503-544-3232; Call Pat: 503-407-9062

REPLACEMENT DECAL SETS Construction, Forestry & Ag Equipment. Fast, Knowledgeable, Reliable Service. 215-536-5339 email: info@CustomServicesCompany.com

Towable Diesel Air Compressors. Many 185s and (4) HP375. Many range from 130 to 2400. Prices from \$9,500 to \$27,500. Overtime Equipment, LLC. 21338 Hwy 30, Filer ID. 83328. 208-734-3434

1974 Caterpillar 12G Motor Grader, Meter Reads 4610, Asking \$42,500. Sandy, OR. Call Pepe: 503-544-3232; Call Pat: 503-407-9062

2014 Case CX160C: 338 Actual Hours. Rear camera. Pattern changer. Wedge quick connect. Hydraulic thumb, 36" digger bucket. AC. Like new, \$148,000. Gaston, OR. 503-789-3726

2009 CimLine CRACK PATCHER. Tandem axle. 230 gallon, 18ft. heated hose and wand. Isuzu 3 cylinder diesel. Near new tires. 1300 ACTUAL Hours. Former Southern California County machine that has been well maintained and is work ready, \$18,900. Located in Twin Falls ID. Call 208-613-0050

2019 John Deere 160C LC, Hydraulic Thumb, Pin Grabber, Auxiliary Hydraulics, Dig and Muck Bucket, Asking \$49,500. Sandy, OR. Call Pepe: 503-544-3232; Call Pat: 503-407-9062

2019 John Deere 160C LC, Hydraulic Thumb, Pin Grabber, Auxiliary Hydraulics, Dig and Muck Bucket, Asking \$49,500. Sandy, OR. Call Pepe: 503-544-3232; Call Pat: 503-407-9062

2019 John Deere 160C LC, Hydraulic Thumb, Pin Grabber, Auxiliary Hydraulics, Dig and Muck Bucket, Asking \$49,500. Sandy, OR. Call Pepe: 503-544-3232; Call Pat: 503-407-9062

2019 John Deere 160C LC, Hydraulic Thumb, Pin Grabber, Auxiliary Hydraulics, Dig and Muck Bucket, Asking \$49,500. Sandy, OR. Call Pepe: 503-544-3232; Call Pat: 503-407-9062

2019 John Deere 160C LC, Hydraulic Thumb, Pin Grabber, Auxiliary Hydraulics, Dig and Muck Bucket, Asking \$49,500. Sandy, OR. Call Pepe: 503-544-3232; Call Pat: 503-407-9062

2019 John Deere 160C LC, Hydraulic Thumb, Pin Grabber, Auxiliary Hydraulics, Dig and Muck Bucket, Asking \$49,500. Sandy, OR. Call Pepe: 503-544-3232; Call Pat: 503-407-9062

2019 John Deere 160C LC, Hydraulic Thumb, Pin Grabber, Auxiliary Hydraulics, Dig and Muck Bucket, Asking \$49,500. Sandy, OR. Call Pepe: 503-544-3232; Call Pat: 503-407-9062

2019 John Deere 160C LC, Hydraulic Thumb, Pin Grabber, Auxiliary Hydraulics, Dig and Muck Bucket, Asking \$49,500. Sandy, OR. Call Pepe: 503-544-3232; Call Pat: 503-407-9062

2019 John Deere 160C LC, Hydraulic Thumb, Pin Grabber, Auxiliary Hydraulics, Dig and Muck Bucket, Asking \$49,500. Sandy, OR. Call Pepe: 503-544-3232; Call Pat: 503-407-9062

2019 John Deere 160C LC, Hydraulic Thumb, Pin Grabber, Auxiliary Hydraulics, Dig and Muck Bucket, Asking \$49,500. Sandy, OR. Call Pepe: 503-544-3232; Call Pat: 503-407-9062

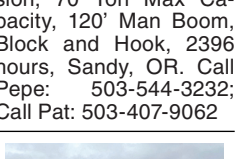
899 Heavy & Indust. Eq.



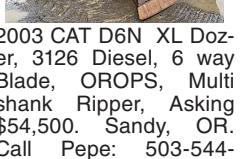
John Deere 310D Backhoe, Enclosed Cab, 4X4, Standard Stick, Two Buckets, 2300 Hours, Asking \$32,500.00. Sandy, OR. Call Pepe: 503-544-3232; Call Pat: 503-407-9062



Sumitomo LS-138RH-5 Crawler Crane, Diesel, Hydrostatic Transmission, 70 Ton Max Capacity, 120' Man Boom, Block and Hook, 2396 hours, Sandy, OR. Call Pepe: 503-544-3232; Call Pat: 503-407-9062



2003 CAT D6N XL Dozer, 3126 Diesel, 6 way Blade, OROPS, Multi shank Ripper, Asking \$54,500. Sandy, OR. Call Pepe: 503-544-3232; Call Pat: 503-407-9062



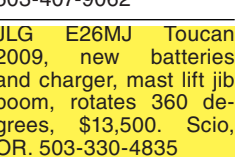
2018 Volvo EC60E Excavator, Blade, Hydraulic Pin Grabber, Two Buckets, 1700 Hours, Asking \$65,000. Sandy, OR. Call Pepe: 503-544-3232; Call Pat: 503-407-9062



2018 Volvo EC60E Excavator, Blade, Hydraulic Pin Grabber, Two Buckets, 1700 Hours, Asking \$65,000. Sandy, OR. Call Pepe: 503-544-3232; Call Pat: 503-407-9062



John Deere 160C LC, Hydraulic Thumb, Pin Grabber, Auxiliary Hydraulics, Dig and Muck Bucket, Asking \$49,500. Sandy, OR. Call Pepe: 503-544-3232; Call Pat: 503-407-9062



JLG E26MJ Toucan 2009, new batteries and charger, mast lift jib boom, rotates 360 degrees, \$13,500. Scio, OR. 503-330-4835



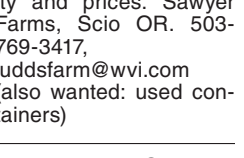
2014 Case CX160C: 338 Actual Hours. Rear camera. Pattern changer. Wedge quick connect. Hydraulic thumb, 36" digger bucket. AC. Like new, \$148,000. Gaston, OR. 503-789-3726



2009 CimLine CRACK PATCHER. Tandem axle. 230 gallon, 18ft. heated hose and wand. Isuzu 3 cylinder diesel. Near new tires. 1300 ACTUAL Hours. Former Southern California County machine that has been well maintained and is work ready, \$18,900. Located in Twin Falls ID. Call 208-613-0050



2019 John Deere 160C LC, Hydraulic Thumb, Pin Grabber, Auxiliary Hydraulics, Dig and Muck Bucket, Asking \$49,500. Sandy, OR. Call Pepe: 503-544-3232; Call Pat: 503-407-9062



2019 John Deere 160C LC, Hydraulic Thumb, Pin Grabber, Auxiliary Hydraulics, Dig and Muck Bucket, Asking \$49,500. Sandy, OR. Call Pepe: 503-544-3232; Call Pat: 503-407-9062



2019 John Deere 160C LC, Hydraulic Thumb, Pin Grabber, Auxiliary Hydraulics, Dig and Muck Bucket, Asking \$49,500. Sandy, OR. Call Pepe: 503-544-3232; Call Pat: 503-407-9062



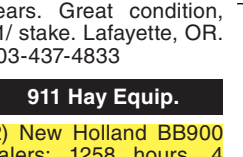
2019 John Deere 160C LC, Hydraulic Thumb, Pin Grabber, Auxiliary Hydraulics, Dig and Muck Bucket, Asking \$49,500. Sandy, OR. Call Pepe: 503-544-3232; Call Pat: 503-407-9062

907 Nursery Equip. & Supplies

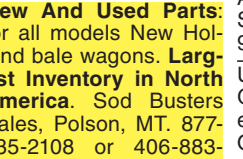
FRESH SAWDUST: Consistently fair pricing. 9 Unit Loads Now Available Forest-Grove, OR. For pricing call 503-849-0216



Nursery stakes: 1/4"x6" on metal pallets. Used 4 years. Great condition, \$1/ stake. Lafayette, OR. 503-437-4833



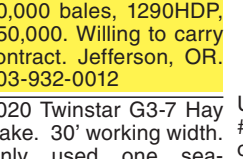
2015 Flory Sweeper: 57 Series, No cab, 7ft head, gas powered, brand new, 15 hours. Asking \$45,500 OBO. Salem, OR. 503-378-9179



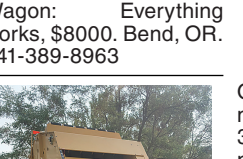
Used Plastic Tree Guards: 8,000, 30 cents each OBO. Newberg, OR. 503-747-8814



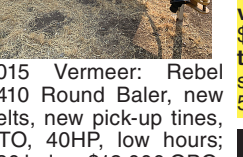
Used Fencing/ Trellis Anchors: 3ft to 4ft, \$4/ each. Gervais, OR. Call Daniel 503-508-2207



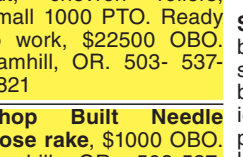
Hesston 1840 Center Feed Small Baler: 0 bales, \$28,000. Elkton, OR. 541-584-2413



Krone Baler: under 30,000 bales, 1290HDP, \$50,000. Willing to carry contract. Jefferson, OR. 503-932-0012



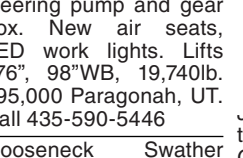
2020 Twinstar G3-7 Hay Rake. 30' working width. Only used one season. Low hours, in like new condition. Picture at www.iokafarms.com, \$33,500. Silverton, OR. 503-991-7138



New Holland 1048 Bale Wagon: Everything works, \$8000. Bend, OR. 541-389-8963



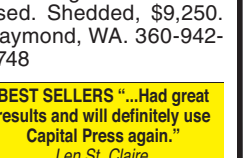
Orchard sprayer Isuzu minitruck 4x4 with raven 330 controller, 3 boom manifolds, flow meter, centrifugal pump, 150 gallon tank, hydraulic folding booms, fully automated, \$17,000. Dayton, OR. 503-437-4833



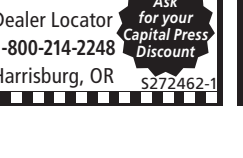
824 Weiss/McNair Harvester with tote trailer, \$12,000. Prune Rite 20' tower with Kubota diesel, \$12,000. Salem, OR. 503-480-4159



2009 John Deere 835 Center Pivot MoCo, new cutter Bar 11"6" cut, chevron rollers, small 1000 PTO. Ready to work, \$22500 OBO. Yamhill, OR. 503- 537-4821



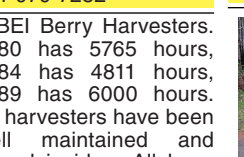
Shop Built Needle Nose rake, \$1000 OBO. Yamhill, OR. 503-537-4821



Freeman 370 Baler: Like new, 27,000 bales, recent \$8,000 overhaul, new paint, hydro. \$20,000 OBO. Junction City, OR. 541-998-2429

917 Orchard/Vineyard Equip.

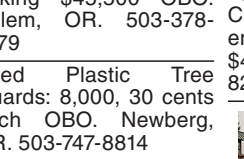
Clean Up Storm Clean up and Thinning: Mechanical thinning. Fast, reliable, low impact. FREE estimates. Serving Oregon. 541-979-7282



3 BEI Berry Harvesters. 1980 has 5765 hours, 1984 has 4811 hours, 1989 has 6000 hours. All harvesters have been well maintained and stored inside. All have been fitted with Littau vertical shaker heads. \$25,000 - \$35,000 depending on harvester. Everson, WA. 360-815-6324



2015 TYM T603 65HP: CAT diesel with loader and 3 point blade, 4WD, AC, heater. 350 hours. Like New. \$27,500. Othello, WA. 509-989-1206, 509-760-3276



1948 Wide front end DC Case tractor with loader. Needs engine repair, \$450. Molalla, OR. 503-829-2756



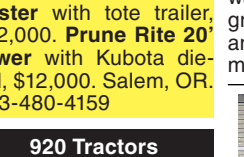
4040 John Deere Tractor: Quad shift transmission, good running engine and transmission, \$12,500 OBO. Trout Lake, WA. 509-637-0239



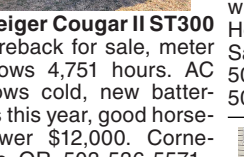
6215 White 200HP, 18 power shift, 4WD, new front and rear tires, \$28,000. Ontario, OR. 288-741-0129



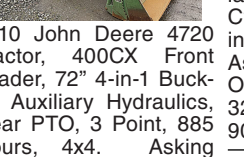
John Deere 2755: 4500 hours, hydraulics slow at remote and 3 point. \$9000. Cloverdale, OR. 503-812-7392



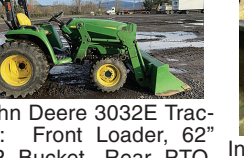
1952 Farmall Cub International, everything works, includes plow, disc, sickle more, blade, parade ready, all the original books, \$4995. Toledo, WA. 360-864-6483



Kubota M7060, nearly new, 26 hours, 18 month warranty left, hydraulic grapple, regular buckets and flail mower. Philomath, OR. 541-929-6376



John Deere 850 Tractor with Front Loader, 61 inch Bucket, 4X4, 3 Point with Rear PTO, 2362 Hours, Asking \$14,500. Sandy, OR. Call Pepe: 503-544-3232; Call Pat: 503-407-9062



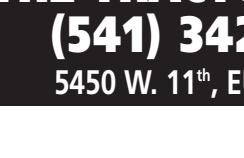
Steiger Cougar II ST300 bareback for sale, meter shows 4,751 hours. AC blows cold, new batteries this year, good horsepower \$12,000. Cornelius, OR. 503-536-5571



2010 John Deere 4720 Tractor, 400CX Front Loader, 72" 4-in-1 Bucket, Auxiliary Hydraulics, Rear PTO, 3 Point, 885 Hours, 4x4. Asking \$32,500.00. Sandy, OR. Call Pepe: 503-544-3232; Call Pat: 503-407-9062



John Deere 3032E Tractor: Front Loader, 62" GP Bucket, Rear PTO, 3 Point, 1225 Hours, 4X4, Asking \$24,500.00. Sandy, OR. Call Pepe: 503-544-3232; Call Pat: 503-407-9062



International 1486 with loader and duals. Runs good, heat and air don't work. 15,000 OBO. Scio, OR. 541-619-8891

920 Tractors

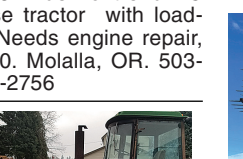
2015 John Deere 7290R Tractor: IVT Transmission, wide tires & weights. Approximately 2000 hours, excellent condition, \$175,000 360-749-4422. Castle Rock, WA. 360-274-4422



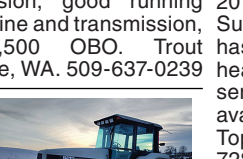
2019 John Deere 123E: 12 hours, quick hitch, excellent condition, \$16,500. Lakebay, WA. 253-677-1041



2010 JCB 541-70 Agri Super, 9600 hours, cab has air conditioning and heat, perfect condition, serial #1521197, delivery available, \$52,000 OBO. Toppensish, WA. 509-728-5000



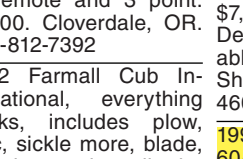
Dandel 12' Flail Mower. new knives, very good condition, \$1800 OBO. Sandy, OR. 503-668-6808



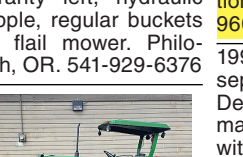
International 14' chopper, very good condition. Needs gear box repair, \$500 OBO. Sandy, OR. 503-668-6808



1997 SNORKEL Lift TB 60A Manlift: 6553 hours, 4x2, 4 cylinder, Ford gas, \$5000 in new parts including new electronic carburetor and both joystick controls. Good condition, \$15,000. Junction-City, OR. 541-513-9600



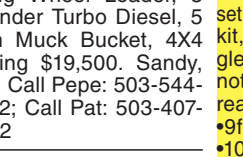
1993 Gleaner R62: 2482 separator hours, duals, Deutz diesel, very well maintained, 27' header with cart, \$32,000 Klamath Falls, OR. Call Larry 541-891-7209



John Deere 850 Tractor with Front Loader, 61 inch Bucket, 4X4, 3 Point with Rear PTO, 2362 Hours, Asking \$14,500. Sandy, OR. Call Pepe: 503-544-3232; Call Pat: 503-407-9062



Kubota R420 Articulating Wheel Loader, 3 Cylinder Turbo Diesel, 5 inch Muck Bucket, 4X4 Asking \$19,500. Sandy, OR. Call Pepe: 503-544-3232; Call Pat: 503-407-9062



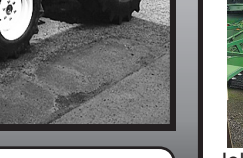
NEW IA Heavy Duty Off-set Wheel Discs. Scraper kit, EZ adjust gang angle, split gang axles, 26" notched blades front and rear. \$9ft. \$12,400 \$10ft. \$12,900 \$11ft. \$13,400 \$12ft. \$13,900 \$13ft. \$14,400 \$14ft. \$17,900 \$15ft. \$18,900 \$16ft. \$19,900 \$18ft. \$21,900 8ft.-22ft. 8,000 lbs. MTC Sales Bend, OR. Scott: 541-548-7185 Visit: www.mtcsales.net Partner Dealers



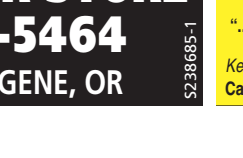
NEW IA Subsoilers 26" Clearance \$3 Shank \$2,995 \$5 Shank \$3,795 \$7 Shank \$4,895 Gauge Wheel Set, Add \$995. HD Subsoilers with Dual Gauge Wheels. Weight 4,500 to 5,500 lbs. 30" Clearance. \$7 Shank \$11,995 \$9 Shank \$12,995 \$11 Shank \$13,995 MTC Sales Bend, OR. Scott: 541-548-7185 Visit: www.mtcsales.net Partner Dealers



NEW IA Pasture Aerators: Bolt on teeth. Heavy Duty Frame. \$8ft \$7,995 \$10ft \$10,995 \$12ft \$11,995 \$27ft wing fold, \$32,900. Includes cement blocks. MTC Sales Bend, OR. Scott: 541-548-7185 Visit: www.mtcsales.net Partner Dealers



John Deere 9600 combines with pickup-heads. 3600 hours. Spike and rasp. \$15,000 each. Lafayette, OR. 503-437-4833

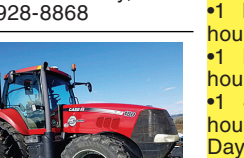


WANTED: Scott Viner Harvester: Mint Flamer in close to working condition. 541-913-2066

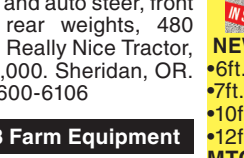
920 Tractors



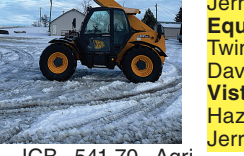
2019 John Deere 5115 ML, exact orchard cab, Hi/Lo transmission, 540/1000 PTO, 2322 hours, in very good condition, \$82,500. Albany, OR. 541-928-8868



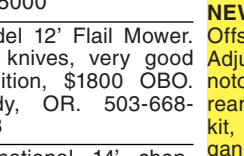
2012 Case Magnum 180 Tractor: 1200 hours, duals, suspension cab, GPS and auto steer, front and rear weights, 480 tires. Really Nice Tractor, \$120,000. Sheridan, OR. 971-600-6106



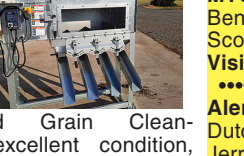
2010 JCB 541-70 Agri Super, 9600 hours, cab has air conditioning and heat, perfect condition, serial #1521197, delivery available, \$52,000 OBO. Toppensish, WA. 509-728-5000



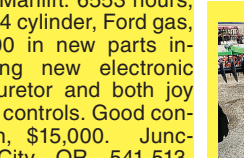
Dandel 12' Flail Mower. new knives, very good condition, \$1800 OBO. Sandy, OR. 503-668-6808



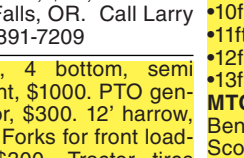
International 14' chopper, very good condition. Needs gear box repair, \$500 OBO. Sandy, OR. 503-668-6808



1997 SNORKEL Lift TB 60A Manlift: 6553 hours, 4x2, 4 cylinder, Ford gas, \$5000 in new parts including new electronic carburetor and both joystick controls. Good condition, \$15,000. Junction-City, OR. 541-513-9600



1993 Gleaner R62: 2482 separator hours, duals, Deutz diesel, very well maintained, 27' header with cart, \$32,000 Klamath Falls, OR. Call Larry 541-891-7209



John Deere 850 Tractor with Front Loader, 61 inch Bucket, 4X4, 3 Point with Rear PTO, 2362 Hours, Asking \$14,500. Sandy, OR. Call Pepe: 503-544-3232; Call Pat: 503-407-9062



Kubota R420 Articulating Wheel Loader, 3 Cylinder Turbo Diesel, 5 inch Muck Bucket, 4X4 Asking \$19,500. Sandy, OR. Call Pepe: 503-544-3232; Call Pat: 503-407-90