

Our sales team is here to serve you!

- Real knowledge
- Real people
- Real results!



Anne Long
National Sales & Outside the Pacific Northwest
503-871-7957
along@capitalpress.com



Pat McKenzie
South Willamette Valley, South Oregon, Central Oregon, & California
541-521-9008
pmckenzie@capitalpress.com



Patty Gilbert
NW Oregon & W Washington & North Idaho
503-308-2478
pgilbert@capitalpress.com



Jim Holt
NE Oregon, East Washington & North Idaho
509-413-7674
jholt@capitalpress.com



JoAnn Vanderwey
South Idaho, NE Nevada, & SE Oregon
208-880-4334
jvanderwey@capitalpress.com

872 Dairy Eq. & Supplies

Kiln Dried Shavings: Smaller truck loads now available. Hogfuel also available. Call for details. Forest Grove, OR. 503-849-0216

Titan Goat Milking Barn, 12'x28', insulated, set up for goat milking, wired, \$10,000. Burns, OR. 541-589-1363

878 Generators

Military Generator, 10,000 watts, 3 faze 120/208 volts, 1 faze 120 volts, 1 faze 120/240 volts, 4 cylinder, onan diesel, air cool, on skids, new planetary starter, new batteries, reset the valve, new frequency transfers, takes oil in filter, fuel filters, has numbers for the filters, auto high heat, low oil pressure shut off, \$3000. Prineville, OR. 541-447-1427



Onan 40kW Generator. 6 cylinder diesel, single/3 phase, low hours, fuel tank, \$15,000. Burns, OR. 541-589-0261

SELLERS BEWARE

- Know who you are dealing with - independently confirm your buyer's name, street address, and telephone number.
- Never accept a check for more than your selling price.
- Never agree to wire back funds to a buyer or a third party - a legitimate buyer will not pressure you to do so, and you have limited recourse if there is a problem with a wire transfer.
- Resist pressure to "act now." If the buyer's offer is good now, it should be good when the check clears.
- If you accept payment by check, ask for a check drawn on a local bank or a bank with a local branch. You can visit that bank branch to determine if the check is legitimate.
- Consider an alternative method of payment, such as an escrow service or online payment service. If the buyer wants to use a service you have not heard of, be sure to check it out to be sure it is reliable. If you do not feel comfortable with the service, do not use it.

887 Irrigation Equip.

100HP Westinghouse 12ft draw irrigation pump, includes start up equipment, \$3900 OBO. Bellingham, WA. 360-734-2222

884 Well-Drilling Equip.

Drill Rig: 240 Speed Star, One Owner, \$2000 firm. Olivehurst, CA. 530-742-2785

887 Irrigation Equip.

100HP Westinghouse 12ft draw irrigation pump, includes start up equipment, \$3900 OBO. Bellingham, WA. 360-734-2222

887 Irrigation Equip.

100HP Westinghouse 12ft draw irrigation pump, includes start up equipment, \$3900 OBO. Bellingham, WA. 360-734-2222

887 Irrigation Equip.

100HP Westinghouse 12ft draw irrigation pump, includes start up equipment, \$3900 OBO. Bellingham, WA. 360-734-2222

887 Irrigation Equip.

100HP Westinghouse 12ft draw irrigation pump, includes start up equipment, \$3900 OBO. Bellingham, WA. 360-734-2222

887 Irrigation Equip.

100HP Westinghouse 12ft draw irrigation pump, includes start up equipment, \$3900 OBO. Bellingham, WA. 360-734-2222

887 Irrigation Equip.

100HP Westinghouse 12ft draw irrigation pump, includes start up equipment, \$3900 OBO. Bellingham, WA. 360-734-2222

887 Irrigation Equip.

100HP Westinghouse 12ft draw irrigation pump, includes start up equipment, \$3900 OBO. Bellingham, WA. 360-734-2222

887 Irrigation Equip.

100HP Westinghouse 12ft draw irrigation pump, includes start up equipment, \$3900 OBO. Bellingham, WA. 360-734-2222

887 Irrigation Equip.

100HP Westinghouse 12ft draw irrigation pump, includes start up equipment, \$3900 OBO. Bellingham, WA. 360-734-2222

887 Irrigation Equip.

100HP Westinghouse 12ft draw irrigation pump, includes start up equipment, \$3900 OBO. Bellingham, WA. 360-734-2222

878 Generators



1996 Spectrum 350 KW GenSet. Detroit 8V92, 568 HP. 260 ACTUAL HOURS. 480V.240V. 120v. 1 and 3 PH. Mounted on an HD tandem axle trailer with 350 gal. fuel tank. New 14 ply radial tires. Former City unit from Southern Arizona. Like New Cond. WORK READY! \$25,000 Located in Twin Falls ID. Call 208-613-0050. Twin Falls, ID. (208)613-0050



GENERATORS: Used, low hour takeouts, 20kW to 2000kW, diesel, propane, & natural gas. Cooperstown, ND. We ship nationwide. 701-371-9526 or 701-367-4305 abrahamindustrial.com



640KW Mobile Genset: Two 320KW generators operated single or in tandem. Switch gears. All modern digital controls. Silenced exhaust. 1000 gallon fuel. 40ft. Utility van enclosure. 50 hours and 54 hours on the generators. 8 near new 11/22.5 radials. Former Municipal in new condition throughout, \$49,900. Located in Twin Falls ID. Call 208-613-0050

884 Well-Drilling Equip.

Drill Rig: 240 Speed Star, One Owner, \$2000 firm. Olivehurst, CA. 530-742-2785

887 Irrigation Equip.

100HP Westinghouse 12ft draw irrigation pump, includes start up equipment, \$3900 OBO. Bellingham, WA. 360-734-2222

884 Well-Drilling Equip.

Drill Rig: 240 Speed Star, One Owner, \$2000 firm. Olivehurst, CA. 530-742-2785

887 Irrigation Equip.

100HP Westinghouse 12ft draw irrigation pump, includes start up equipment, \$3900 OBO. Bellingham, WA. 360-734-2222

887 Irrigation Equip.

100HP Westinghouse 12ft draw irrigation pump, includes start up equipment, \$3900 OBO. Bellingham, WA. 360-734-2222

887 Irrigation Equip.

100HP Westinghouse 12ft draw irrigation pump, includes start up equipment, \$3900 OBO. Bellingham, WA. 360-734-2222

887 Irrigation Equip.

100HP Westinghouse 12ft draw irrigation pump, includes start up equipment, \$3900 OBO. Bellingham, WA. 360-734-2222

887 Irrigation Equip.

100HP Westinghouse 12ft draw irrigation pump, includes start up equipment, \$3900 OBO. Bellingham, WA. 360-734-2222

887 Irrigation Equip.

100HP Westinghouse 12ft draw irrigation pump, includes start up equipment, \$3900 OBO. Bellingham, WA. 360-734-2222

887 Irrigation Equip.

100HP Westinghouse 12ft draw irrigation pump, includes start up equipment, \$3900 OBO. Bellingham, WA. 360-734-2222

887 Irrigation Equip.

100HP Westinghouse 12ft draw irrigation pump, includes start up equipment, \$3900 OBO. Bellingham, WA. 360-734-2222

887 Irrigation Equip.

100HP Westinghouse 12ft draw irrigation pump, includes start up equipment, \$3900 OBO. Bellingham, WA. 360-734-2222

887 Irrigation Equip.

100HP Westinghouse 12ft draw irrigation pump, includes start up equipment, \$3900 OBO. Bellingham, WA. 360-734-2222

887 Irrigation Equip.

100HP Westinghouse 12ft draw irrigation pump, includes start up equipment, \$3900 OBO. Bellingham, WA. 360-734-2222

887 Irrigation Equip.

100HP Westinghouse 12ft draw irrigation pump, includes start up equipment, \$3900 OBO. Bellingham, WA. 360-734-2222

887 Irrigation Equip.

100HP Westinghouse 12ft draw irrigation pump, includes start up equipment, \$3900 OBO. Bellingham, WA. 360-734-2222

887 Irrigation Equip.

NEW! 10" PVC Pipe 1300' Class 125 Gasketed, \$15.96/ft. 6" PVC Pipe 3500' class 125 Gasketed \$6.30/ft. AquaTech Irrigation Supply. Pasco, WA. 509-619-9256

Irrigation Mainline: 5" Moore Rain with valves, \$1.85/ foot. Bend, OR. 541-389-8963

(40) Used Pivots: New listings coming. Engines, pumps. Garden Valley, ID. Call Mike at 208-420-1480, or see www.pivotsplus.com

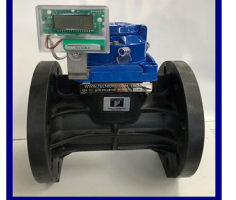


NEW IA Pivot Track Closer. Heavy Duty with adjustable cone discs. From 60" to 12" closing width. Hydraulic Depth Control water fill roller packer, \$5,495. MTC Sales Bend, OR. Scott: 541-548-7185 Visit: www.mtcsales.net

Aleman Equipment Dutchess, Alberta, CAN. Jerry: 403-793-7341 Equipment Finders Twin Falls, ID Dave: 208-731-4040 Vista Equipment Hazen, NV. Jerry: 775-741-0688

WaterTec

IRRIGATION
Tecnidro Flow Meters
Need to know your flow rates?

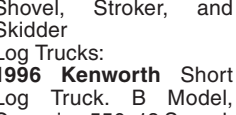


Cast Iron or Poly - 2", 3", 4" 30 to 625 GPM Starting at \$325 Call Us Today for Pricing on all Models! 360.393.4923 watertecna.com

893 Logging Equip.

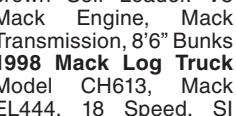
Logging Equipment and Log Trucks
Logging Equipment: Shovel, Stroker, and Skidder
Log Trucks: 1996 Kenworth Short Log Truck, B Model, Cummins 550, 18 Speed, SI Scales, 8ft Bunks. 1989 Kenworth Log Truck, B Model, 3406B, 13 Speed, SI Scales, 8" Bunks. 1986 Mack with 1990 crown Self Loader. V8 Mack Engine, Mack Transmission, 8" Bunks 1998 Mack Log Truck Model CH613, Mack EL444, 18 Speed, SI Scales, 8" Bunks Lyons, OR. Please call in the Evenings: 503-859-2806

896 Forklifts



2016 Hyster H230HD. 12,500 hours, 8ft. forks, hydraulic fork positioners. Side Shift, 2 stage 212" upright. Cummins power, \$44,000. Gaston, OR. 503-789-3726

899 Heavy & Indust. Eq.



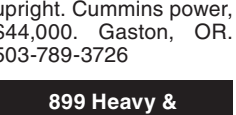
NWTL Inc Heavy Haul & Trucking Travis Dispatch 503-849-6867 Services: •Multi-Axle Lowboy •Heavy Haul •Heavy Equipment Recovery •Equipment Transport •Agriculture Equipment •Construction Equipment •Forestry Equipment •All Lower 48 States Hourly and Mileage Rates Available, Sandy, OR.

896 Forklifts



Case 850K Dozer, 6 way Blade, enclosed ROPS, Multi Shank Ripper, 4840 Hours, Asking \$69,950.00. Sandy, OR. Call Pepe: 503-544-3232; Call Pat: 503-407-9062

899 Heavy & Indust. Eq.



2016 CTS Belly Dump, two axle, tires and breaks 80%, great condition, \$29,500. Hermiston, OR. 503-351-4412

899 Heavy & Indust. Eq.



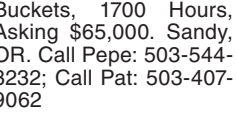
2018 Volvo EC60E Excavator, Blade, Hydraulic Pin Grabber, Two Buckets, 1700 Hours, Asking \$65,000. Sandy, OR. Call Pepe: 503-544-3232; Call Pat: 503-407-9062

899 Heavy & Indust. Eq.



2003 CAT D6N XL Dozer, 3126 Diesel, 6 way Blade, OROPS, Multi shank Ripper, Asking \$54,500. Sandy, OR. Call Pepe: 503-544-3232; Call Pat: 503-407-9062

899 Heavy & Indust. Eq.



2017 Prime Tech 175 forestry mulcher: 1100 hours, \$185,000. Jefferson, OR. 503-932-1149, 503-930-7834

899 Heavy & Indust. Eq.



1980 Clark 730 Bobcat Skid Steer, new Kohler 37HP engine, has forks, bucket, hay grapple, 16 foot ramp trailer, good rubber, really good machine, \$18,000. Enterprise, OR. 541-263-0132

899 Heavy & Indust. Eq.

70' TRUCK SCALE with all new electronics. 12" Height. Canby, OR. 503-803-1926



Sumitomo LS-138RH-5 Crawler Crane, Diesel, Hydrostatic Transmission, 70 Ton Max Capacity, 120' Man Boom, Block and Hook, 2396 hours, Sandy, OR. Call Pepe: 503-544-3232; Call Pat: 503-407-9062



2009 CimLine CRACK PATCHER. Tandem axle. 230 gallon, 18ft. heated hose and wand. Isuzu 3 cylinder diesel. Near new tires. 1300 ACTUAL Hours. Former Southern California County machine that has been well maintained and is work ready, \$18,900. Located in Twin Falls ID. Call 208-613-0050



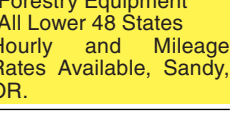
2017 Prime Tech 175 forestry mulcher: 1100 hours, \$185,000. Jefferson, OR. 503-932-1149, 503-930-7834



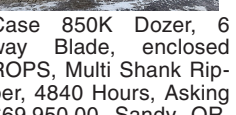
Morooka MST2000 Track Carrier/ Dumper. Rumble Gate. Approximately 6-7 yard Capacity. \$28,995 Or Trade for CAT with winch and canopy. Nehalem, OR. 503-322-0219 or tidegates@yahoo.com



1974 Caterpillar 12G Motor Grader, Meter Reads 4610, Asking \$42,500. Sandy, OR. Call Pepe: 503-544-3232; Call Pat: 503-407-9062



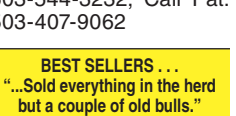
2005 Kawasaki 90Z V Wheel Loader, Fully Enclosed Cab, A/C, 5.2 Cubic Yard Bucket, Powershift, Cummins Diesel, Asking \$44,500. Sandy, OR. Call Pepe: 503-544-3232; Call Pat: 503-407-9062



Case 850K Dozer, 6 way Blade, enclosed ROPS, Multi Shank Ripper, 4840 Hours, Asking \$69,950.00. Sandy, OR. Call Pepe: 503-544-3232; Call Pat: 503-407-9062



Link-Belt 210 X2 Excavator: Hydraulic Thumb, Quick Connect, 62" Muck Bucket, Isuzu Engine, Asking \$65,000. Sandy, OR. Call Pepe: 503-544-3232; Call Pat: 503-407-9062



John Deere 310D Backhoe, Enclosed Cab, 4X4, Standard Stick, Two Buckets, 2300 Hours, Asking \$32,500.00. Sandy, OR. Call Pepe: 503-544-3232; Call Pat: 503-407-9062



1993 John Deere 210C Skip Loader - \$17,500 FEATURES: •4 in 1 Front Bucket •Gannon Box with Rippers SPECIFICATIONS: •Operating Weight: 11,000# •HP: 55



1998 Case 570L XT Skip Loader - \$24,500 FEATURES: •4,677 Hours •Gannon Box with Rippers •4 in 1 Front Bucket SPECIFICATIONS: •Operating Weight: 13,500# •HP: 75



Call Cameron Noble or Eric Hunt CENTRAL POINT, OR 855-423-1200 www.amractor.com

902 Farm Equip. Parts

902 Farm Equip. Parts

BIG TRACTOR PARTS, INC.

~ GEARED FOR THE FUTURE ~

STEIGER TRACTOR SPECIALIST

- 1. We are your source for new & used Steiger drivetrain parts Series 1-9300 Series.
- 2. We rebuild Spicer manual transmissions, Fugi power shift transmissions, dropboxes & axle with ONE YEAR WARRANTY!
- 3. We now rebuild computer control boxes for Steiger tractors 1982-1999.

800-982-1769 www.bigtractorparts.com

899 Heavy & Indust. Eq.

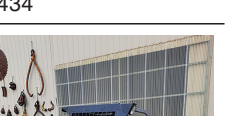
1997 SNORKEL Lift TB 60A Manlift: 6553 hours, 4x2, 4 cylinder, Ford gas, \$5000 in new parts including new electronic carburetor and both joy stick controls. Good condition, \$15,000. Junction-City, OR. 541-513-9600

REPLACEMENT DECAL SETS

Construction, Forestry & Ag Equipment. Fast, Knowledgeable, Reliable Service. 215-536-5339 email: info@CustomServicesCompany.com Thousands of sets, Old & New, in our digital inventory. www.QuipCal.com



Towable Diesel Air Compressors. Many 185s and (4) HP375. Hours range from 130 to 2400. Prices from \$9,500 to \$27,500. Overtime Equipment, LLC. 21338 Hwy 30, Filer ID. 83328. 208-734-3434



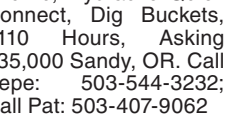
1980 Clark 730 Bobcat Skid Steer, new Kohler 37HP engine, has forks, bucket, hay grapple, 16 foot ramp trailer, good rubber, really good machine, \$18,000. Enterprise, OR. 541-263-0132



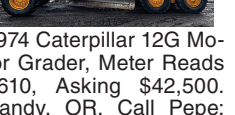
Link-Belt 3900 Quantum Excavator, Cab Guarded, Cat Walks, Hydraulic Thumb, Hydraulic Quick Connect, Dig Buckets, 9110 Hours, Asking \$35,000 Sandy, OR. Call Pepe: 503-544-3232; Call Pat: 503-407-9062



2005 Kawasaki 90Z V Wheel Loader, Fully Enclosed Cab, A/C, 5.2 Cubic Yard Bucket, Powershift, Cummins Diesel, Asking \$44,500. Sandy, OR. Call Pepe: 503-544-3232; Call Pat: 503-407-9062



John Deere 310D Backhoe, Enclosed Cab, 4X4, Standard Stick, Two Buckets, 2300 Hours, Asking \$32,500.00. Sandy, OR. Call Pepe: 503-544-3232; Call Pat: 503-407-9062



Case 850K Dozer, 6 way Blade, enclosed ROPS, Multi Shank Ripper, 4840 Hours, Asking \$69,950.00. Sandy, OR. Call Pepe: 503-544-3232; Call Pat: 503-407-9062

