



**Access Capital Press any where, any way you want it.**

**Print**  
Capital Press AG Weekly is written for the Northwest region's Ag Community

**E-edition**  
An exact pixel copy of Capital Press. Easy to use - easy to share articles.

**E-mail Newsletters**  
The latest top ag stories weekly.

**Website**  
CapitalPress.com news and ads updated 5 days a week.



**1 year \$65**

**2 years \$115**

**EZ Pay Digital \$4/month Digital + Print \$5/month**

**1-800-781-3214 CapitalPress.com**

**908 Garden, Turf, Yard Equip.**

(12) 16" axial barrel fans. Toro diesel 5 gang reel mower. John Deere LT155 42" mulching mower, hydrostat. Case 227 tractor/ mower, hydrostat. Powerboss riding sweeper/ polisher/ vacuum. Burbank, WA. Call for prices. 509-539-1333

**911 Hay Equip.**



Hay squeeze built on a 2001 4400 DT466 International truck. New squeeze head, hydraulic system, new power steering pump and gear box. New air seats, LED work lights. Lifts 176", 98"WB, 19,740lb. \$125,000. Paragonah, UT. Call 435-590-5446



1032s Mil-Stak: came off a 28 Bale wagon. We have everything you need to get it installed and running. It has been upgraded to the automatic model. Paragonah UT. Asking \$9,000. Call 435-590-5446



Pottinger 4.54T Tedder. Bought it but never used. Shredded, \$9,250. Raymond, WA. 360-942-3748



2000 Case 8880 Swather, with 15 foot Model 725 rotary header, serial #CFH0155315, 3207 hours, runs great, no longer farming alfalfa, \$29,000 OBO. Dyer, NV. 949-235-4104



**1-800-882-6789**

**Subscribe 1-800-781-3214 CapitalPress.com**

**917 Orchard/ Vineyard Equip.**



**Made in the USA since 1954. Always has been. Always will be.**

**Built for: Safety, Stability, Longevity, Affordability**

**www.tallmanladders.com 541-386-2733 800-354-2733**

**911 Hay Equip.**

**New Holland 1085 Bale Wagon:** \$47,500. **New Holland 216 rake,** \$4500. McMinnville, OR. 503-435-9437

(2) New Holland BB900 Balers: 1258 hours, 4 cylinder diesel, chambered, \$15,000. 1814 hours, diesel, chambered, \$14,000. Both in good condition. McArthur, CA. 530-949-0643

**New And Used Parts:** for all models New Holland bale wagons. **Largest Inventory in North America.** Sod Busters Sales, Polson, MT. 877-735-2108 or 406-883-2118

**Large Supply of Rebuilt New Holland Bale Wagons:** Also buying New Holland bale wagons. Sod Busters Sales, Polson, MT. 406-883-2118

#1 Balewagons: Buy, Sell, New Holland 2&3 wide self-propelled, pull-type models, parts, tires, manuals. Caldwell, ID. 208-880-2889 www.balewagon.com

Heiston 1840 Center Feed Small Baler: 0 bales, \$29,000. Elkton, OR. 541-584-2413

**Krone Baler:** under 30,000 bales, 1290HDP, \$50,000. Willing to carry contract. Jefferson, OR. 503-932-0012

2020 Twinstar G3-7 Hay Rake. 30' working width. Only used one season. Low hours, in like new condition. Picture at www.iokafarms.com, \$33,500, Silverton, OR. 503-991-7138

**BEST SELLERS** "...Had great results and will definitely use Capital Press again." Len St. Claire, Horseshoe Loop, Lebanon, OR Call 1-800-882-6789 to advertise.

**RCO Baits**

**Gophers • Squirrels Voles • Moles** Ask for your Capital Press Discount Dealer Locator 1-800-214-2248 Harrisburg, OR 572462-1

**917 Orchard/ Vineyard Equip.**



**ORCHARD Clean Up Storm Clean up and Thinning:** Mechanical thinning. Fast, reliable, low impact. FREE estimates. Serving Oregon 541-979-7282

3 BEI Berry Harvesters. 1980 has 5765 hours, 1984 has 4811 hours, 1989 has 6000 hours. All harvesters have been well maintained and stored inside. All have been fitted with Littau vertical shaker heads. \$25,000 - \$35,000 depending on harvester. Everson, WA. 360-815-6324

Subscribe Now To Capital Press And Get Connected Directly To Regional Agricultural News! Call 1-800-781-3214

**920 Tractors**

Used Medium Tensile #10, #12 Wire: for berries or grapes, approximately 100lb. rolls, \$20 per roll. Gervais, OR. Call Daniel: 503-508-2207



Used Fencing/ Trellis Anchors: 3ft to 4ft, \$4/ each. Gervais, OR. Call Daniel 503-508-2207



2 FACMA Semek Hazelnut Harvesters. 2020 with 393 hours and 2021 with 185 hours. Sweep and harvest with one machine. Pulls conventional rear unload cart. Carts modified to work with machines are included. Call Kevin with any questions. 2020: \$90,000. 2021: \$100,000. Corvallis, OR. 503-991-2772



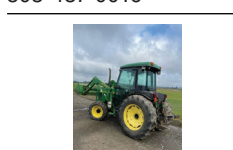
Orchard sprayer Isuzu minitruck 4x4 with raven 330 controller, 3 boom manifolds, flow meter, centrifugal pump, 150 gallon tank, hydraulic folding booms, fully automated, \$17,000. Dayton, OR. 503-437-4833

**917 Orchard/ Vineyard Equip.**

**7655 Flory Sweeper** 1880 hours, \$30,000. Silverton, OR. 503-932-0766



2 Monchiero hazelnut harvesters. 2017 Monchiero model number 20125, 591 hours. Well maintained, clean, and ready for harvest. Asking \$125,000. These new are going for \$190,000. 2016 Monchiero model 20125 harvester. 783 hours. Well maintained, clean, and ready to harvest. Asking \$120,000. New they are going for \$190,000. Buy both, and get ramps custom designed for ease of servicing. Call Blake Kauer with questions. Amity, OR. 503-437-0016



2003 John Deere 5520N with loader. 75HP, Manual, MFWD 4WD, rear PTO:540. 4,300 engine hours, Cab with heat and air. Available now! \$25,000. Salem, OR. 503-585-8337



Rear Shredders, 9 feet, Model #KSH09K940, in good condition, \$11,500. Albany, OR. 503-510-7779

Dandel 12' Flail Mower. new knives, very good condition, \$2400 OBO. Sandy, OR. 503-668-6808

ORCHARD Clean Up Storm Clean up and Thinning: Mechanical thinning. Fast, reliable, low impact. FREE estimates. Serving Oregon 541-979-7282

3 BEI Berry Harvesters. 1980 has 5765 hours, 1984 has 4811 hours, 1989 has 6000 hours. All harvesters have been well maintained and stored inside. All have been fitted with Littau vertical shaker heads. \$25,000 - \$35,000 depending on harvester. Everson, WA. 360-815-6324

Subscribe Now To Capital Press And Get Connected Directly To Regional Agricultural News! Call 1-800-781-3214

**920 Tractors**

**917 Orchard/ Vineyard Equip.**

**Chehalem Valley**  
EARLY ORDER DISCOUNT PROGRAM RUNNING NOW!  
Call for savings on Harvesting Equipment

Come see us today for available orchard equipment.

**NEW EQUIPMENT**

- Flory 58 Series Diesel Sweepers..... Call for Price
- Flory 490 Hazelnut Harvester ..... Call for Price
- Air-O-Fan Sprayers.. Call for Configuration & Pricing
- Riteaway V Scrapers w/wheels & roller, 10' offset option available..... Call for Price
- Guardian Ag & Prune Rite 20' & 25' towers ..... Your Choice - Call for Price
- 324C Bump Cart, 4 tote w/chain ..... Call for Price
- Hy. Pruning Saw w/hoses & couplers..... \$1,600

Jack Rabbit Equipment Available  
Call for Silo Bins & Dryer Equipment

**USED EQUIPMENT**

- 6' land pride disc, like new..... \$1,600
- Flory 7'6" Tine Bar Head, like new ..... \$8,500
- Ranmacher 76" Diesel Sweeper ..... \$9,500
- 3000 Tree Guards ..... .30 Each
- Kuhn EL 35 130 rototiller..... \$1,250
- 20' Prunerite Tower..... \$14,500
- Coming Soon: Flory 7070 Sweeper.....\$51,000

Call us at **(503)538-7739**  
www.chehalemvalleyorchardequipment.com  
Or Come See Us At **24175 Dayton Ave. Newberg, Oregon 97132** S244084

**CAPITAL PRESS LINE CLASSIFIEDS**  
Fast Results! Easy to Do!  
CALL TOLL-FREE: / ONLINE 24/7/365  
1-800-882-6789 / CapitalPress.com

**Zetor TRACTORS**  
Zetor Models:  
6421/6441  
7421/7441  
8421/8441  
67 to 90 HP

**THE TRACTOR STORE**  
(541) 342-5464  
5450 W. 11th, Eugene, OR

**Branson TRACTORS**  
RUGGED, RELIABLE, RED... AND THAT'S NO BULL!!

**NEW 4x4 BRANSON 2515H**  
2100 Loader Lift Capacity at the Pins  
Tractor with Loader...\$23,900 OR  
Tractor Loader Backhoe w/ Thumb..... \$32,500

**BONNEY'S**  
www.BonneysAg.com  
81600 N. Hwy. 395 Hermiston, OR  
Open Monday - Saturday  
541-922-1213

**920 Tractors**

**Many Other Models in Stock!**

**BONNEY'S**  
www.BonneysAg.com  
81600 N. Hwy. 395 Hermiston, OR  
Open Monday - Saturday  
541-922-1213

**POWER MOTORSPORTS**  
Sublimity, OR (503) 769-8888

**OFFICIAL TRACTOR OF TOUGH.**

**Mahindra Tractors**

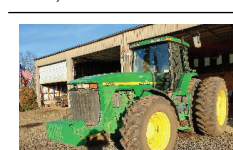
2022 TRACTOR OPEN HOUSE  
FEBRUARY 18-19, 9AM-4PM  
CHECK OUT THE NEW 2022 MODELS

**POWERMOTORSPORTS.COM**

**920 Tractors**



2010 Case 485 Quad Tractor: 4300 hours, Deluxe cab, \$140,000. Salem, OR. 503-917-1401

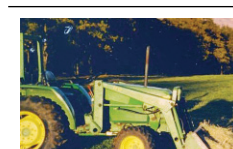


2015 John Deere 7290R Tractor: IVT Transmission, wide tires & weights. Approximately 2000 hours, excellent condition, \$180,000 360-749-4422. Castle Rock, WA. 360-274-4422

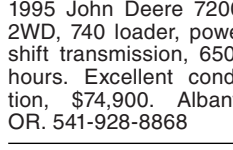


1998 John Deere 8400: 3886 hours. Excellent condition \$99,500. Stayton, OR. 503-931-8786

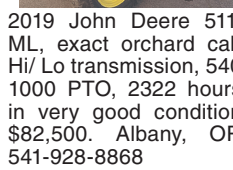
**8680 Massey Ferguson** tractor, duals, weights, 6 remotes, autosteer, 1300+/-hrs, \$170,000  
**8770 John Deere** almost new tires, 3 pt, hours unknown, \$28,000  
**8320 John Deere** tractor, 6500 hours, 350 hours on John Deere rearm engine, duals, 2nd owner, \$85,000  
**8370R John Deere** tractor, 1650 hours, ILS, IVT, duals all around, deluxe cab and lights, leather, green star GPS, \$305,000 Silverton, OR. 503-932-0766



John Deere 970 Diesel 4WD, Model 80 bucket. Approximately 4000 hours, 3 point hitch. Good Working Order, \$8,995 firm. The Dalles, OR. 541-980-0511



1995 John Deere 7200: 2WD, 740 loader, power shift transmission, 6500 hours. Excellent condition, \$74,900. Albany, OR. 541-928-8868



2019 John Deere 5115 ML, exact orchard cab, Hi/Lo transmission, 540/1000 PTO, 2322 hours, in very good condition, \$82,500. Albany, OR. 541-928-8868



Ag-Bagger MH9500: 1995, Cummins 8.3L, 5 years on new rotor, packing fingers and feed table belt, \$35,000 OBO. Trout Lake, WA. 509-637-0239

**Make your line ads work harder!**  
Enhance them to boost results.  
**GET NOTICED!**

- ADD an Attention Getter at the top
- CENTER some or all of the copy
- ADD a YELLOW BACKGROUND
- BOLD specific copy
- ADD a photo
- ADD a logo

**Our sales reps are waiting to help you.**  
1-800-882-6789

**AD DEADLINES:**  
CLASSIFIED DISPLAY ADS, WEDS. @ 10AM  
CLASSIFIED LINE ADS WEDS. @ NOON

**Capital Press**  
CapitalPress.com

**923 Farm Equipment**

**920 Tractors**

2010 Case 485 Quad Tractor: 4300 hours, Deluxe cab, \$140,000. Salem, OR. 503-917-1401

2015 John Deere 7290R Tractor: IVT Transmission, wide tires & weights. Approximately 2000 hours, excellent condition, \$180,000 360-749-4422. Castle Rock, WA. 360-274-4422



Steiger Cougar II ST300 bareback for sale, meter shows 4,751 hours. AC blows cold, new batteries this year, good horsepower \$12,000. Cornelius, OR. 503-536-5571



2010 John Deere 4720 Tractor, 400CX Front Loader, 72" 4-in-1 Bucket, Auxiliary Hydraulics, Rear PTO, 3 Point, 885 Hours, 4x4. Asking \$32,500.00. Sandy, OR. Call Pepe: 503-544-3232; Call Pat: 503-407-9062



John Deere 3032E Tractor: Front Loader, 62" GP Bucket, Rear PTO, 3 Point, 1225 Hours, 4X4, Asking \$24,500.00. Sandy, OR. Call Pepe: 503-544-3232; Call Pat: 503-407-9062

**923 Farm Equipment**



GK H7 tree digger 2001 good condition, \$120,000. 2018 like new \$180,000 chopper, \$15,000. Undercut blade, \$2500. Discs, \$2500 each. 3 point attachment, \$8000 Dayton, OR. 503-437-4833



Ag-Bagger MH9500: 1995, Cummins 8.3L, 5 years on new rotor, packing fingers and feed table belt, \$35,000 OBO. Trout Lake, WA. 509-637-0239

**Make your line ads work harder.**  
**Get noticed!**

- BOLD specific copy
- CENTER some or all of the copy
- ADD a yellow background
- ADD an Attention Getter at the top
- ADD a photo
- ADD a logo

**Our sales reps are waiting to help you.**

**AD DEADLINES:**  
Classified Display Ads, Weds. @ 10AM  
Classified Line Ads Weds. @ Noon

**Capital Press**  
1-800-882-6789  
Fax 503-370-4383  
CapitalPress.com

**Containers For Sale**  
20' and 40'  
REFRIGERATED CONTAINERS AVAILABLE

**Portland Container**  
9449 N. Burgard Way, Portland OR  
Call John 503-286-5961 ext. 1320  
or 1-800-788-5159  
boxsales@pdxcontainer.com  
(Credit Cards Accepted)

S281041-1

S281041-1

S281041-1

S281041-1

S280795-1