

805 Farm Buildings

Martin Cisneros Pole Buildings & Concrete: Shops, garages, arenas, hay storage. Agriculture/Residential, additions and repairs. Serving Oregon CCB# 135771. Licensed, bonded and insured. Excellent references. 503-375-9273 or 503-507-2847

822 Nursey Stock - Plants



BAREROOT HAZELNUT TREES: Grown in compost for better nutrient uptake. 6000 McDonald, 3500 Yamhill, 1000 Wepster and 1000 PollyO. York and Dorris available as additional pollinators. Nice straight trees with great roots. 36"+ heights with strong calipers. \$6 each. Discounts offered for orders of 3000+ We also have #2 trees for \$4 each. Photos available upon request. Email: tawfarms@peak.org or call 541-979-8620. Tangent, OR.

EMERALD GREEN ARBORVITAE: 2-1/4", liners available. Forest Grove, OR. Call 503-359-7540



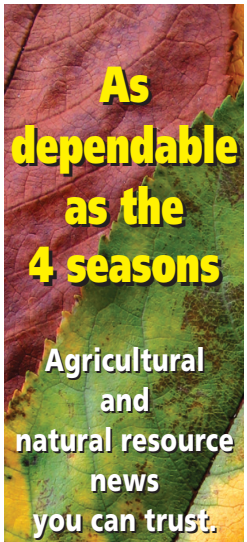
Hazelnut Trees: McDonald, Jefferson, Yamhill, Wepster, York, Eta, Theta, Felix. Dayton, OR. 503-864-4422

Blueberry 20+ Varieties, Rasperry, Marion, Boyesen, Currant, Grape, Kiwi, Strawberry Plants. Canby, OR. 541-543-7566
www.canby.com/morningshade

Hazelnut trees for sale. Tie offs. MacDonalds, Wepsters, Yorks. Nice roots! Junction City, OR. 541-554-4891

HAZELNUT TREES ALLUVIAL ACRES NURSERY

Polly-O, Yamhill, McDonald, Wepster, Jefferson, Pollenizers. Scio, OR 503-508-4684
Mature Liberty blueberry bushes. Removing for construction. Price is bare root, unpruned, quantity 10+. \$12 each OBO. Salem, OR. 503-990-1985



As dependable as the 4 seasons

Agricultural and natural resource news you can trust.

Subscribe today.
1-800-781-3214
Capital Press
1-800-882-6789
Subscribe
1-800-781-3214
CapitalPress.com

822 Nursey Stock - Plants

824 Seed

Pasture Seed \$1.20/ lb. Lawn Seed \$1.80/ lb. Wheat Straw \$120/ ton. Grass Hay \$180/ ton. Wheat \$6/ bag. Rickreall, OR. 503-623-6922

825 Fertilizer & Soil Amendments



Organic Fertilizer
•Bulk Chicken Manure
•Bulk Chicken Litter
•Delivery Services
For pricing and freight quotes call 541-926-1829 or e-mail: paulh@potentgrow.com

835 Hemp

Turnkey Operation: Warehouse, 20,000sqft. 70 cents per square foot per month for propagation/ drying. Concrete floor, electricity, full bathroom, office space. 6 acres under greenhouses. \$500 per acre/month. 25 acres at \$250 per acre/ month. All with water rights. 1500sqft. mobile home at \$1800/month. Sheridan, OR. Call/ TEXT. Text preferred: 503-843-4608



3rd Annual Golden Grow Awards & Hemp Show: February 5th, 2022 Ashland Hills Hotel, Ashland, OR. Speakers and Awards Ceremony from 10:30AM to 6:00PM. Be an Exhibitor and be part of the show. Bring your retail Hemp Products. For more info go to www.soorhempcoop.com. Or email us at: soorhempcoop@gmail.com

Agricultural and natural resource coverage of the west.

Dependable. Definitive. Trusted.



Subscribe today.
1-800-781-3214
Capital Press
1-800-882-6789
Subscribe
1-800-781-3214
CapitalPress.com

822 Nursey Stock - Plants

869 Livestock Equip. & Supplies



Sold the Feed Lot. Feed Truck for Sale! 1999 Volvo, automatic, tandem axle, 950 Kirby box. Good condition. Ready to use, \$25,000. Vale, OR. 541-881-9436



1995 White/Volvo: automatic, tandem axle, 1020 cubic ft. Rotomix box with Hay Pro feed mixer, good condition. Ready to use, \$35,000. Vale, OR. 541-881-9436

Livestock Panels: 16' (6) rail, (3) brace, \$170 each. 12' panels, (7) rail, (2) brace, \$135. Bow gates, all lengths and sizes. These panels are new Green color, hundreds available. **Heavy 16' Feeder Panels,** \$410 each. La Grande, OR. 541-805-9279, 541-963-6258



NEW Schuler Feed Mixer: Model 750. Twin screw, trailer mount, single axle, 22.5 dual tires, 2 speed gearbox, front conveyor. Overlapping auger design, rear door. **Sale Priced at \$60,000.** Whatcom MFG. Lynden, WA. 360-354-3094

Hay Bonnet Horse Feeders In Stock: NW Farm Supply, Hermiston, OR. 800-801-5650 or Mike 541-561-6047



640KW Mobile Genset: Two 320KW generators operated single or in tandem. Switch gears. All modern digital controls. Silenced exhaust. 1000 gallon fuel. 40ft. Utility van enclosure. 50 hours and 54 hours on the generators. 8 near new 11/22.5 radials. Former Municipal in new condition throughout, \$49,900. Located in Twin Falls ID. Call 208-613-0050

Electric Scales 10'2" wide x 16' long. Ideal as axle scales for large trucks or livestock. All components included, \$3000 Meridian, ID. 208-888-1376

887 Irrigation Equip.

Looking for a farm or ranch? VISIT FarmSeller.com

Water Master Series and Evergreen Superior Service & Design
• All your needs for irrigation parts service
• We build custom equipment for your special needs
• Hose replacements & fusion repairs
• Transport Tanks • Rental Returns & Used Equipment
• Structural and steel available for purchase

Valley Workman Truck Equipment
• Full Service
• Alterations
• Dump Bodies • Hoists
• Farmbeds • Flatbeds

Valley Fab
10910 Portland Rd. NE • Brooks, OR
Call: 503-792-3739 • Fax: 503-792-3738

ERNST
Irrigation • Electrical • Tractor

"We understand your water needs. Let our experienced staff assist you with all your water quality and quantity needs."

PRODUCTS:

- T and C 1/2" - 6"
- Filtration
- Valves
- Sprinklers
- Water Meters
- Chemical Injection
- Bandit Clamps
- Aluminum Irrigation Fittings & Pipe 2" - 10"
- Wheelines & Wheeline Fittings
- Hard Hose Travelers
- Linears
- Water Pumps
- Steel Pipe & Fittings 1/2" - 12"
- PVC Fittings & Pipe 1/2" - 18"
- Low Volume/Micro Irrigation Drip Hose 1/2" - 2"
- Angus Drag Hose 2 1/2" - 5" Suction & Discharge Hose
- T-Bolt Clamps
- Motor Bearings
- Pump Packing
- Controllers
- Fish Friendly Screens
- Victaulic Fittings
- Camlock Fittings
- Wheelines & Wheeline Fittings
- Hard Hose 2" - 5 1/2"
- K-Line POD Irrigation
- Manure Pumps

SERVICES:
Design & Consultation • Pumps & Panels, including Variable Frequency Drives • Traveler Repair, all makes & models • Field Fabrication • Big Gun Rebuilding • Water Testing / Flow & Quality

www.ErnstIrrigation.com
20179 Main St., St. Paul, OR 97137
(503) 633-1111

872 Dairy Eq. & Supplies

Kiln Dried Shavings: Smaller truck loads now available. Hogfuel also available. Call for details. Forest Grove, OR. 503-849-0216

878 Generators



1996 Spectrum 350 KW GenSet. Detroit 8V92, 568 HP. 260 ACTUAL HOURS. 480v.240v. 120v. 1 and 3 PH. Mounted on an HD tandem axle trailer with 350 gal. fuel tank. New 14 ply radial tires. Former City unit from Southern Arizona. Like New Cond. WORK READY! \$25,000 Located in Twin Falls ID. Call 208-613-0050

Onan 175KW generator head with engine control and wiring harness. 12 lead reconnectable, SAE 2 bell housing, only 106 run hours. \$7,000. Sumas, WA. 360-961-5221



GENERATORS: Used, low hour takeouts, 20KW to 2000kW, diesel, propane, & natural gas. Cooperstown, ND. We ship nationwide. 701-371-9526 or 701-367-4305 abrahamindustrial.com



640KW Mobile Genset: Two 320KW generators operated single or in tandem. Switch gears. All modern digital controls. Silenced exhaust. 1000 gallon fuel. 40ft. Utility van enclosure. 50 hours and 54 hours on the generators. 8 near new 11/22.5 radials. Former Municipal in new condition throughout, \$49,900. Located in Twin Falls ID. Call 208-613-0050

Military Generator, 10,000 watts, 3 faze 120/208 volts, 1 faze 120 volts, 1 faze 120/ 240 volts, 4 cylinder, onan diesel, air cool, on skids, new planetary starter, new batteries, reset the valve, new frequency transfers, takes oil in filter, fuel filters, has numbers for the filters, auto high heat, low oil pressure shut off, \$3000. Prineville, OR. 541-447-1427

887 Irrigation Equip.

HP Pipe & Supply
• Drip Irrigation • Filtration • Design
598 Baseline, Cornelius, OR 97113
Phone (503) 357-4217
www.hpspipe.com
info@hpspipe.com

Water Master Series and Evergreen Superior Service & Design
• All your needs for irrigation parts service
• We build custom equipment for your special needs
• Hose replacements & fusion repairs
• Transport Tanks • Rental Returns & Used Equipment
• Structural and steel available for purchase

Valley Workman Truck Equipment
• Full Service
• Alterations
• Dump Bodies • Hoists
• Farmbeds • Flatbeds

Valley Fab
10910 Portland Rd. NE • Brooks, OR
Call: 503-792-3739 • Fax: 503-792-3738

ERNST
Irrigation • Electrical • Tractor

"We understand your water needs. Let our experienced staff assist you with all your water quality and quantity needs."

PRODUCTS:

- T and C 1/2" - 6"
- Filtration
- Valves
- Sprinklers
- Water Meters
- Chemical Injection
- Bandit Clamps
- Aluminum Irrigation Fittings & Pipe 2" - 10"
- Wheelines & Wheeline Fittings
- Hard Hose Travelers
- Linears
- Water Pumps
- Steel Pipe & Fittings 1/2" - 12"
- PVC Fittings & Pipe 1/2" - 18"
- Low Volume/Micro Irrigation Drip Hose 1/2" - 2"
- Angus Drag Hose 2 1/2" - 5" Suction & Discharge Hose
- T-Bolt Clamps
- Motor Bearings
- Pump Packing
- Controllers
- Fish Friendly Screens
- Victaulic Fittings
- Camlock Fittings
- Wheelines & Wheeline Fittings
- Hard Hose 2" - 5 1/2"
- K-Line POD Irrigation
- Manure Pumps

SERVICES:
Design & Consultation • Pumps & Panels, including Variable Frequency Drives • Traveler Repair, all makes & models • Field Fabrication • Big Gun Rebuilding • Water Testing / Flow & Quality

www.ErnstIrrigation.com
20179 Main St., St. Paul, OR 97137
(503) 633-1111

887 Irrigation Equip.

(2) 1/4 mile Pierce Pivots. Worked last summer. Newer panel boxes, \$20,000 each. Riley, OR. 541-480-8183



NWTL Inc Heavy Haul & Trucking
Travis Dispatch
503-849-6867
Services:
•Multi-Axle Lowboy
•Heavy Haul
•Equipment Recovery
•Equipment Transport
•Agriculture Equipment
•Construction Equipment
•Forestry Equipment
•All Lower 48 States
Hourly and Mileage Rates Available, Sandy, OR.

2000 Ingersoll Rand 185 CFM air compressor with 4 KW generator. Skid mount. John Deere Diesel 50 Ft. of hose. Very clean well operating machine from a large California County, \$7900. Located in Twin Falls ID. Call 208-613-0050

1997 SNORKEL Lift TB 60A Manlift: 6553 hours, 4x2, 4 cylinder, Ford gas, \$5000 in new parts including new electronic carburetor and both joystick controls. Good condition, \$15,000. Junction-City, OR. 541-513-9600

REFURBISHED PUMPS AT A FRACTION OF THE COST OF NEW. (6) Cornell Marathon Electric, 15 to 75hp, 1760-3500 RPM's; (3) Berkeley Baldor Industrial Motor, 7.5 to 15hp, 3450 RPM's. Meridian, ID. 208-888-1376

NEW!
10" PVC Pipe 1300' Class 125 Gasketed, \$15.96/ft. 6" PVC Pipe 3500' class 125 Gasketed \$6.30/ft. AquaTech Irrigation Supply. Pasco, WA. 509-619-9256

10" PVC Pipe 1300' Class 125 Gasketed, \$15.96/ft. 6" PVC Pipe 3500' class 125 Gasketed \$6.30/ft. AquaTech Irrigation Supply. Pasco, WA. 509-619-9256

2011 Bobcat E32, Auxiliary Hydraulics, Rubber Tracks, Blade, Kubota Motor with 4400 Hours, Hammer, New Thumb, Asking \$29,950. Sandy, OR. Call Pepe: 503-544-3232; Call Pat: 503-407-9062

2008 CAT 303.5C CR: New Hydraulic Thumb, Auxiliary Hydraulics, Rubber Tracks, Blade, Hammer Available, Asking \$34,950. Sandy, OR. Call Pepe: 503-544-3232; Call Pat: 503-407-9062

1996 Kenworth Short Log Truck. B Model, Cummins 550, 18 Speed, SI Scales, 8ft Bunks.

1989 Kenworth Log Truck B Model, 3406B, 13 Speed, SI Scales, 8'6" Bunks.

1986 Mack with 1990 crown Self Loader. V8 Mack Engine, Mack Transmission, 8'6" Bunks

1998 Mack Log Truck Model CH613, Mack EL444, 18 Speed, SI Scales, 8'6" Bunks
Lyons, OR. Please call in the Evenings: 503-859-2806

2016 Hyster H230HD. 12,500 hours, 8ft. forks, hydraulic fork positioners. Side Shift, 2 stage 212" upright. Cummins power, \$44,000. Gaston, OR. 503-789-3726

The West's BEST Ag News!
• newspaper
• e-paper
• facebook
• twitter
• web
CapitalPress.com

907 Nursery Equip. & Supplies

BUYERS OF HEAVY DUTY GREENHOUSES AND STRUCTURES

OREGON VALLEY GREENHOUSES Greenhouse Manufacturing & Supplies
Oregon Valley GREENHOUSES
503-678-2700
www.ovg.com * info@ovg.com
20357 Hwy 99E Aurora, OR

TWINWALL POLY CARBONATE	
8 MIL CLEAR 4' WIDE SHEETS	
8' ... \$52.80	14' ... \$92.40
10' ... \$66.00	16' ... \$105.60
12' ... \$79.20	24' ... \$150.60

3.2 OZ GROUND COVER

12 X 300	\$218.00
15 X 300	\$269.00

prices good thru 2/15/22

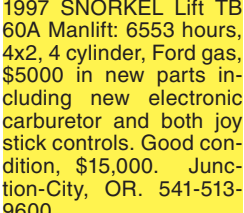
899 Heavy & Indust. Eq.



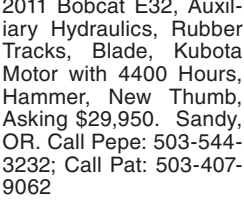
REPLACEMENT DECAL SETS
Construction, Forestry & Ag Equipment. Fast, Knowledgeable, Reliable Service. 215-536-5339 email: info@CustomServicesCompany.com
Thousands of sets, Old & New, in our digital inventory.
www.QuipCal.com



Morooka MST-2200, Diesel, 30" Rubber Tracks, 4926 Hours, Asking \$49,500. Sandy, OR. Call Pepe: 503-544-3232; Call Pat: 503-407-9062



Morooka MST-2200VD Dump Crawler, Diesel, Rubber Tracks, 5637 Hours, Asking \$59,500. Sandy, OR. Call Pepe: 503-544-3232; Call Pat: 503-407-9062



Case 580K Backhoe, 2WD, 4432 Hours, Asking \$14,950. Sandy, OR. Call Pepe: 503-544-3232; Call Pat: 503-407-9062

70' TRUCK SCALE with all new electronics. 12" Height. Canby, OR. 503-803-1926



2016 CTS Belly Dump, two axle, tires and breaks 80%, great condition, \$29,500. Hermiston, OR. 503-351-4412

Towable Diesel Air Compressors. Many 185s and (4) HP375. Hours range from 130 to 2400. Prices from \$9,500 to \$27,500. Overtime Equipment, LLC. 21338 Hwy 30, Filer ID. 83328. 208-734-3434

Buying or Selling Capital Press is here to help you!
1-800-882-6789 or FAX 503-370-4383
CapitalPress.com

1993 John Deere 210C Skip Loader - \$17,500
FEATURES:
•4 in 1 Front Bucket
•Gannon Box with Rippers
SPECIFICATIONS:
•Operating Weight: 11,000#
•HP: 55

American Tractor
Call Cameron Noble or Eric Hunt
CENTRAL POINT, OR
855-423-1200
www.amractor.com

907 Nursery Equip. & Supplies

12' WIRE LOCK
base, wires
and screws
\$13.30

3.2 OZ GROUND COVER

12 X 300	\$218.00
15 X 300	\$269.00

prices good thru 2/15/22

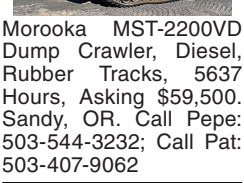
899 Heavy & Indust. Eq.



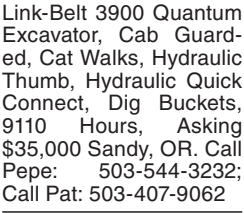
2003 CAT D6N XL Dozer, 3126 Diesel, 6 way Blade, OROPS, Multi shank Ripper, Asking \$54,500. Sandy, OR. Call Pepe: 503-544-3232; Call Pat: 503-407-9062



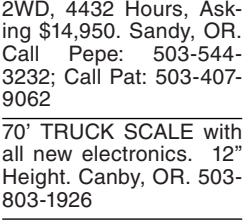
Sumitomo LS-138RH-5 Crawler Crane, Diesel, Hydrostatic Transmission, 70 Ton Max Capacity, 120' Man Boom, Block and Hook, 2396 hours, Sandy, OR. Call Pepe: 503-544-3232; Call Pat: 503-407-9062



2009 CimLine CRACK PATCHER. Tandem axle. 230 gallon, 18ft. heated hose and wand. Isuzu 3 cylinder diesel. Near new tires. Low hours. Former Southern California County machine that has been well maintained and is work ready, \$18,900. Located in Twin Falls ID. Call 208-613-0050



Link-Belt 3900 Quantum Excavator, Cab Guarded, Cat Walks, Hydraulic Thumb, Hydraulic Quick Connect, Dig Buckets, 9110 Hours, Asking \$35,000 Sandy, OR. Call Pepe: 503-544-3232; Call Pat: 503-407-9062



2011 Bobcat E32, Auxiliary Hydraulics, Rubber Tracks, Blade, Kubota Motor with 4400 Hours, Hammer, New Thumb, Asking \$29,950. Sandy, OR. Call Pepe: 503-544-3232; Call Pat: 503-407-9062



2016 CTS Belly Dump, two axle, tires and breaks 80%, great condition, \$29,500. Hermiston, OR. 503-351-4412

2018 Volvo EC60E Excavator, Blade, Hydraulic Pin Grabber, Two Buckets, 1700 Hours, Asking \$65,000. Sandy, OR. Call Pepe: 503-544-3232; Call Pat: 503-407-9062

2016 Hyster H230HD. 12,500 hours, 8ft. forks, hydraulic fork positioners. Side Shift, 2 stage 212" upright. Cummins power, \$44,000. Gaston, OR. 503-789-3726

1998 Case 570L XT Skip Loader - \$24,500
FEATURES:
•4,677 Hours
•Gannon Box with Rippers
SPECIFICATIONS:
•4 in 1 Front Bucket
•Operating Weight: 13,500#
•HP: 75

American Tractor
Call Cameron Noble or Eric Hunt
CENTRAL POINT, OR
855-423-1200
www.amractor.com

907 Nursery Equip. & Supplies

12' WIRE LOCK
base, wires
and screws
\$13.30

3.2 OZ GROUND COVER

12 X 300	\$218.00
15 X 300	\$269.00

prices good thru 2/15/22

899 Heavy & Indust. Eq.



2003 CAT D6N XL Dozer, 3126 Diesel, 6 way Blade, OROPS, Multi shank Ripper, Asking \$54,500. Sandy, OR. Call Pepe: 503-544-3232; Call Pat: 503-407-9062



Sumitomo LS-138RH-5 Crawler Crane, Diesel, Hydrostatic Transmission, 70 Ton Max Capacity, 120' Man Boom, Block and Hook, 2396 hours, Sandy, OR. Call Pepe: 503-544-3232; Call Pat: 503-407-9062



2009 CimLine CRACK PATCHER. Tandem axle. 230 gallon, 18ft. heated hose and wand. Isuzu 3 cylinder diesel. Near new tires. Low hours. Former Southern California County machine that has been well maintained and is work ready, \$18,900. Located in Twin Falls ID. Call 208-613-0050

