

354 Auction Sales

354 Auction Sales

354 Auction Sales

354 Auction Sales

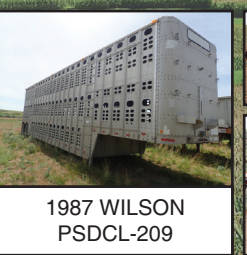
354 Auction Sales

525 Commercial Property

546 Rentals, Leases

561 Ranches

**PUBLIC ONLINE AUCTION**  
**GRAY LAND AND LIVESTOCK**  
 Rolling Stock & Farming Equipment  
 Start Date: 11AM | January 18  
 End Date: 11AM | January 25  
 Preview: 8AM to 4PM | January 24  
 555 Crider Valley Road,  
 Bickleton, WA 99322

Bid Online - [Murphyauction.com](http://Murphyauction.com) - 425.486.1246 - Full Preview at [Murphyauction.com](http://Murphyauction.com)

## The Northwest's best auctions are in Capital Press and online!



Go to [CapitalPress.com/Calendar/Auctions/](http://CapitalPress.com/Calendar/Auctions/) after Noon every Friday for upcoming auctions near you.  
 May vary depending on holidays.



EMPOWERING PRODUCERS OF FOOD & FIBER

### Make your line ads work harder!

Enhance them to boost results.

**GET NOTICED!**

- ADD an Attention Getter at the top
- CENTER some or all of the copy
- ADD a YELLOW BACKGROUND
- BOLD specific copy
- ADD a photo
- ADD a logo

**Our sales reps are waiting to help you.**

1-800-882-6789

**AD DEADLINES:**  
 CLASSIFIED DISPLAY ADS, WEDS. @ 10AM  
 CLASSIFIED LINE ADS WEDS. @ NOON

**Capital Press**  
[CapitalPress.com](http://CapitalPress.com)

**Processing Warehouse, Plant, Offices.**  
 Property includes 5.14 Acres and 77,000sqft of buildings and office space. Hot pack processing line, warehouse, and offices. North of Salem, OR. Close to I-5. \$3,000,000  
 Email: [farmforlease18@gmail.com](mailto:farmforlease18@gmail.com)

**531 Real Estate Wanted**  
 Ranch wanted that will support 100 to 200 pair. Idaho, Eastern Oregon. Ontario, OR. 701-202-9230


**BEST SELLERS "...Had great results and will definitely use Capital Press again."**  
 Len St. Claire,  
 Horseshoe Loop, Lebanon, OR  
 Call 1-800-882-6789 to advertise.

**SELLERS BEWARE**

- Know who you are dealing with - independently confirm your buyer's name, street address, and telephone number.
- Never accept a check for more than your selling price.
- Never agree to wire back funds to a buyer or a third party - a legitimate buyer will not pressure you to do so, and you have limited recourse if there is a problem with a wire transfer.
- Resist pressure to "act now." If the buyer's offer is good now, it should be good when the check clears.
- If you accept payment by check, ask for a check drawn on a local bank or a bank with a local branch. You can visit that bank branch to determine if the check is legitimate.
- Consider an alternative method of payment, such as an escrow service or online payment service. If the buyer wants to use a service you have not heard of, be sure to check it out to be sure it is reliable. If you do not feel comfortable with the service, do not use it.

**540 Recreational Property**

**PUBLISHER'S NOTICE**  
 All real estate advertising in this newspaper is subject to the Fair Housing Act which makes it illegal to advertise "any preference, limitation or discrimination based on race, color, religion, sex, handicap, familial status or national origin, or any intention to make any such preference, limitation or discrimination." Familial status includes children under the age of 18 living with parents or legal custodians, pregnant women and people securing custody of children under 18.  
 This newspaper will not knowingly accept any advertising for real estate which is in violation of the law. Our readers are hereby informed that all dwellings advertised in this newspaper are available on an equal opportunity basis. To complain of discrimination call HUD toll-free at 1-800-669-9777. The toll-free number for the hearing impaired is 1-800-927-9275.



S273856-1

**PUBLISHER'S NOTICE**  
 All real estate advertising in this newspaper is subject to the Fair Housing Act which makes it illegal to advertise "any preference, limitation or discrimination based on race, color, religion, sex, handicap, familial status or national origin, or any intention to make any such preference, limitation or discrimination." Familial status includes children under the age of 18 living with parents or legal custodians, pregnant women and people securing custody of children under 18.  
 This newspaper will not knowingly accept any advertising for real estate which is in violation of the law. Our readers are hereby informed that all dwellings advertised in this newspaper are available on an equal opportunity basis. To complain of discrimination call HUD toll-free at 1-800-669-9777. The toll-free number for the hearing impaired is 1-800-927-9275.



S219450-1

**STORAGE SPACE NEEDED!**

Local 501(c)(3) non-profit seeks donated storage space for approximately 35 bikes. Renter can claim tax deduction for donated rental costs. Albany, OR. area 480-737-3595

**PASTURE WANTED**

WANTED: Summer Pastured. Central Oregon. Spring to fall. Can be timber, range or irrigated pasture. Willing to maintain fence, water troughs, etc. 541-777-0847

**PASTURE FOR LEASE**

The Barker Ranch, West Richland, WA. is looking for a cattleman to lease approx. 2,000 acres of irrigated grass and standing corn food plots for grazing from March 1 - June 1, 2022, for up to a maximum of 2,800 AUM's. 600 fall calving pairs are preferred, but not mandatory. The ranch is managed primarily for wildlife and is under a USDA compatible use agreement, so all ranch and NRCS rules of cattle rotation and remaining cover must be adhered to at all times. The use of temporary electric fences will be required in some pastures. Included with the lease is an area for a camp trailer, large corral, sorting pens, and permanent loading chute. It is expected that someone be onsite 24-7. Call 509-521-3663, or email [barkerranch@frontier.com](mailto:barkerranch@frontier.com) for questions or further details.

**FOR LEASE**  
**Vegetable Processing Facility and 2 Storage Buildings** Hermiston Oregon. Processing Facility approximately 58,000 sq. ft. with office, lunch room, receiving area, packing room, two large cold rooms, shop/parts room, staging room, shipping/ loading dock for three (3) trucks, scales); 2 Storage Facilities (30,000 sq. ft. facility with dehumidification; 60,000 sq. ft. facility with computerized refrigeration and dehumidifiers), private railroad spurs for transportation, water rights (well), septic, electricity, water lagoon for waste water. Will possibly rent processing facility and storage facilities separately. Contact Larry Blunck at 503-656-1654 or [larry@bluncklaw.com](mailto:larry@bluncklaw.com)

**CAPITAL PRESS CLASSIFIEDS GET RESULTS!**

**561 Ranches**

**for RANCHES & FARMS call**  
**Crater Lake Realty, Inc.**  
 Linda L. Long, Broker  
 541-891-5562  
 Chiloquin, OR  
[linda@craterlakerealtyinc.com](mailto:linda@craterlakerealtyinc.com) • [craterlakerealtyinc.com](http://craterlakerealtyinc.com)

**IDAHO RANCHES & FARMS**  
**WE SPECIALIZE IN TAX-DEFERRED EXCHANGES**

**Robert Jones Realty**  
**ALC**  
 ACCREDITED LAND CONSULTANT

**Bob Jones, Broker**  
 208-308-6060  
**Mark Jones, Assoc. Broker**  
 208-308-3030  
 208-733-0404  
 1766 Addison Avenue E,  
 Twin Falls, ID 83301  
[www.RJREALTY.com](http://www.RJREALTY.com) S277569-1

**295+/- ACRE HAY & CATTLE RANCH.** Modoc County, CA. Flood irrigated meadow hay, only 1st water right, home, barns, corrals, granary, now \$1,299,000. **Adjacent 2nd home with shop; and 176+/- acres spring grazing with ponds, well, & view homesites, available separately.** Call for details. Broker 775-829-2122.

**KNIFE LAND**

**Lostine Timber Tract - OR BACK ON THE MARKET!** 9,772± acres with 2.5 miles of Bear Creek frontage, USFS frontage, and the potential for 41± home sites at 240 acres each. **\$9,319,000**


**Carey Farm - ID** 30± air miles to Sun Valley. 436± acres with 250± acres irrigated by 5 pivots and wheel lines. Includes a manufactured home. Zoned 1 home/acre, and 1 home/10 acres. **\$3,500,000**

208.345.3163 [knipeland.com](http://knipeland.com)

**The Sleepy Elk Ranch**  
 Huntington, OR  
**\$3,700,000**

Easy access to freeway yet private 3886 acres, m/l historic owner operated beef production tract. Adjacent BLM grazing allotment. Home place served by a newer domestic well. 445 Acres of pasture and 3405 m/l acres of range land. Water rights, springs and ponds. 4 LOP, all gated, fenced and cross-fenced. All documents on file upon request.

**Patty Glaze,**  
 Licensed Broker  
**541-786-0038**  
[glazep@eoni.com](mailto:glazep@eoni.com)  
 Blue Summit Realty Group  
 102 Greenwood St.,  
 La Grande, OR 97850



S277938-1

**Missing Something?**  
**Capital Press has what you're looking for and more!**

**Capital Press**  
 EMPOWERING PRODUCERS OF FOOD & FIBER

1-800-882-6789  
[CapitalPress.com](http://CapitalPress.com)

**Auction Sales Co.**  
**COMPLETE AUCTION SERVICES**  
**AUCTIONSALESCO.COM**  
 541.296.1012 | 1400 US Hwy 197 - THE DALLES, OR

**Our readers know the best dirt!**



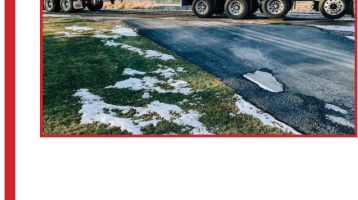
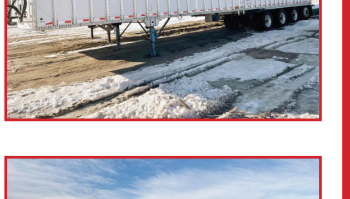
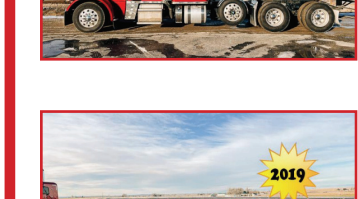
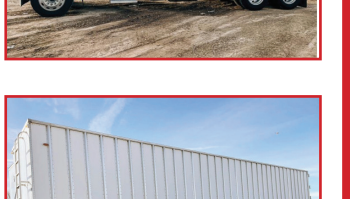
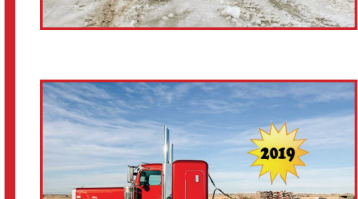
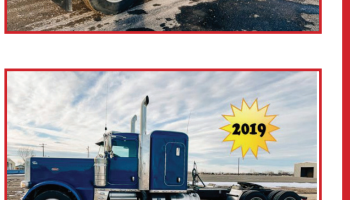
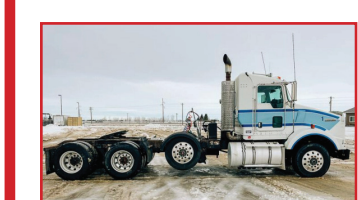
**SUBSCRIBE TODAY!**  
**CAPITAL PRESS**  
 1-800-781-3214  
[CapitalPress.com](http://CapitalPress.com)

**Truck & Trailer Online Auction**  
**Bidding Starts: January 19<sup>th</sup> Bidding Ends: January 26<sup>th</sup>**  
 Go to our website to see all available items and to bid!

**BIG MOUNTAIN AUCTIONS**

Keith Couch  
 Owner/Auctioneer  
 208.431.9300

[www.bigmountainauctions.com](http://www.bigmountainauctions.com)



S277072-1

**ONLINE AUCTION**  
**ARCHON METAL FABRICATION COMPLETE LIQUIDATION**  
 50602 BIRCH AVE. SCAPPOOSE, OR.  
**PREVIEW DATES: JAN. 21ST & 22ND 9AM - 5PM**  
**BIDDING ENDS: JANUARY 24TH STARTING AT 6PM**

HIGHLIGHTS INCLUDING:  
 AMADA LC-2415A4NT PULSAR LASER CUTTING SYSTEM, 14' CINCINNATI 2514 POWER SHEAR, 12' CINCINNATI 175 PF-10 HYDRAULIC PRESS BRAKE, 10' CINCINNATI 908XB HYDRAULIC PRESS BRAKE, AMADA HKA 400 HORIZONTAL MITERING BANDSAW, RELIANT POWDER COATING OVEN, BOOTH & SUPPLIES, ELECTRO STEAM LB50 STEAM GENERATOR, MILLER 250DX TIG WELDERS, QUINCY ROTARY AIR COMPRESSOR, ZEKS AIR DRYER, WORKSTATIONS, TABLES & CABINETS, TOOLS, OFFICE FURNISHINGS AND MORE. ...

**Miller & Co.**  
**AUCTIONEERS**  
 Jim Miller 503-312-1992  
 Visit [jmillerauctioneers.com](http://jmillerauctioneers.com)

S277620-1

## CONTEMPLATING YOUR NEXT MOVE?

Consider that more buyers are searching web listings.

**Call us today!**  
 Our sales reps are waiting to help you put your ad online today.

Or post your ad online 24/7/365.

**Capital Press**  
 EMPOWERING PRODUCERS OF FOOD & FIBER

**800-882-6789**  
[CapitalPress.com](http://CapitalPress.com)

564 Farms

564 Farms

564 Farms

564 Farms

564 Farms

**Need a New Lender? Bridge Loans Available!**

**Popular Ag Finance is a nationwide Agricultural lender lending on the following property types:**

- Farms, Dairies, and Ranches
- Vineyards and Wineries
- Timber and Orchards
- Other Agricultural Use and Facilities

**Loans include the following features:**

- \$1-100 million loan sizes
- Rates starting at 3% Fixed with 25-year amortizations with no prepayment penalties
- Revolving lines of credit available
- 3% Interest with interest-only payments
- Monthly, semi-annual or annual payments
- Purchase or refinance with Cash-Out for operating capital or land purchase available
- Behind on payments? Popular Ag Finance can provide bridge loans and operating capital.

**Darin Young, President**  
 submit loans to:  
[dyoung@popularcommercial.com](mailto:dyoung@popularcommercial.com)  
**888-950-9339**  
[www.popularagfinance.com](http://www.popularagfinance.com)

10808 S. Riverfront Pkwy. Ste 3132  
 South Jordan, Utah 84095



S268467-1