

210 Trucks



1975 Kenworth Model A. 8V71T Detroit. 15 speed deep reduction transmission. 2 speed rear ends, 2 line wet kit. Pad walking beam suspension. Steel frame. A little rough, but runs great. \$5500 OBO Turner, OR. Call/ text 503-507-0359

210 Trucks



2005 Dodge Ram 3500 Flatbed, 5.9 Cummins, 6 Speed Manual, Exhaust Brake, 137,333 Miles, 4x4. Asking \$29,950. Sandy, OR. Call Pepe: 503-544-3232; Call Pat: 503-407-9062

210 Trucks



1992 Ford F800 SEWER JETTER TRUCK. 2003 model Sewer Equipment of America Jetter system. 2000 gallon water tank. 43,000 ACTUAL MILES on truck. 6 cylinder Diesel. Allison transmission. Near new radials. Exceptionally clean one owner former City truck that runs drives and operate like new, \$12,900. Located in Twin Falls ID. Call 208-613-0050

210 Trucks



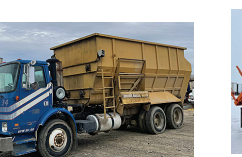
2007 IHC 7400 single axle dump truck. 7 to 8 yard bed. DT570 Diesel. 300HP, plumbed for a pup. Fuller 10 speed transmission. 37,000GVW. 75% 11/22.5 radials. PS, AC, CC. Very clean and well maintained truck from the California DOT. 198,000 miles. NO RUST! WORK READY. \$27,900. Located in Twin Falls ID. Call 208-613-0050

210 Trucks



1991 Ford Auger Truck: Altec derrick, 65,000 original miles. Good condition, good tires. 2 winches. Excellent for pole barn work. Diesel motor, 4 speed with 2 speed rear end, \$8,900. Renton, WA. 206-799-1927

210 Trucks



Sold the Feed Lot. Feed Truck for Sale! 1999 Volvo, automatic, tandem axle, 950 Kirby box. Good condition. Ready to use, \$25,000. Vale, OR. 541-881-9436

210 Trucks



1996 GMC TOPKICK: single axle flat bed dump truck. 12ft bed. 26,000GVW. NO CDL. 3116 CAT Diesel. Allison Automatic. PS, AC. 60,000 ACTUAL MILES. Pintle hitch. Former California DOT truck that has been well maintained and is very clean. NO RUST! WORK READY. \$18,900. Located in Twin Falls ID. Call 208-613-0050

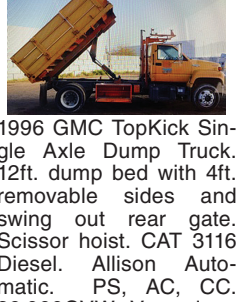
210 Trucks



1995 White/Volvo: automatic, tandem axle, 1020 cubic ft. Rotomix box with Hay Pro feed mixer, good condition. Ready to use, \$35,000. Vale, OR. 541-881-9436



2007 IHC 4300 with VersaLift VST-6001 manlift. 67FT. working height. Articulated with 1000LB. material crane. Squirt boom. Full rotation bucket. DT466 Diesel (NO DEF) with Allison 6 speed Automatic PS, AC, CC. RUST FREE. Good 11/22.5 radials. Former State owned truck that has been well maintained, clean and runs and operates like new. Intensive inspection and Certification in Aug. 2021. Work ready. \$34,000. Located in Twin Falls ID. Call 208-613-0050



1996 GMC TopKick Single Axle Dump Truck. 12ft. dump bed with 4ft. removable sides and swing out rear gate. Scissor hoist. CAT 3116 Diesel. Allison Automatic. PS, AC, CC. 26,000GVW. Very clean well maintained truck from a California State agency. Runs, drives, and operates well. WORK READY. \$17,900 Located in Twin Falls, ID. Call 208-613-0050



2005 IHC Paystar 5500i tandem dump truck. 14ft. Stainless Steel dump bed with 28in. live chain floor with removable conveyor cover and regular tailgate with metered gate discharge. Cummins ISX 435HP Diesel. Eaton 13 speed. PS, AC, CC. Jake. Brand new 11/22.5 radials. Bed alone is \$70K new. One owner former State truck that is in like new condition. Well maintained! \$36,900. Located in Twin Falls ID. Call 208-613-0050



WANTED: Older Peterbilt Tractor in nice condition to be used for farm truck. Shelbyville, IL. 217-273-9111



1999 Ford F-350 XLT. 7.3 diesel, 6 speed manual transmission, easy clean molded vinyl floorboards, short wheelbase, approximately 265,000 miles. Newer M55 Toyo tires. Ranch Hand bumper, \$16,000 or best reasonable offer. Juntura, OR. 541-604-5187



1995 International 4900: diesel DT466. All wheel drive, 6x6, pole auger lineman truck, 32,000lb. capacity, Altec D3060T, 3 stage, seat controls, crane, automatic transmission, 4 outriggers, rear hydraulic winch, 96519 miles \$29,000. Gaston, OR. 503-789-3726



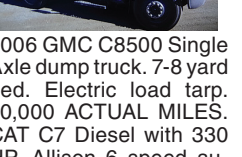
1988 Kenworth T800 with 21ft. roller deck dump bed. NTC Cummins Diesel. 13 speed. Jake, AC, PS. 236K MILES. 70% 11/22.5 radials. Very clean and well maintained original owner truck that is rust free and work ready, \$13,900. Located in Twin Falls ID. Call 208-613-0050



2007 IHC 4400 with 12K. Lb. folding crane 25ft. reach and Hydraulic cable winch and outriggers. 15ft. flatbed with tool boxes and torch compartment and 3500lb. lift gate. DT466 Diesel with Fuller 10 speed transmission. Low Miles PS, AC, CC. 80% 22.5 radial tires. Spotlessly clean and well maintained truck from the California DOT. RUST FREE! Runs, drives and operates like new. WORK READY. \$29,900. Located in Twin Falls ID. Call 208-613-0050



2001 IHC 2674 tandem axle dump truck. 15 yard bed. N14 Cummins, 410HP. Fuller 13 speed transmission. Jake brake. SIDE LOCK rear differentials. PS, AC, CC, PW, PM. Near new first run 11/22.5 radials. 18,000Lb. front axle, 144,000 ACTUAL MILES. 6000 hours. Very well maintained and clean truck from a State DOT. Needs nothing, it is work ready. \$39,000. Located in Twin Falls ID. Call 208-613-0050



2006 GMC C8500 Single Axle dump truck. 7-8 yard bed. Electric load tarp. 70,000 ACTUAL MILES. CAT C7 Diesel with 330 HP. Allison 6 speed automatic. PS, AC, CC. Near new 22.5 radials. 33,000 GVW. One owner, well maintained California County truck that is RUST FREE and in excellent condition. Runs, drives, and operates like new. \$28,900. Located in Twin Falls, ID. Call 208-613-0050

Looking for a farm or ranch? VISIT **FarmSeller.com**

PLACE LINE CLASSIFIED ADS TOLL-FREE FROM ANYWHERE! 1-800-882-6789

1-800-882-6789 CapitalPress.com

**Buying or Selling** Capital Press is here to help you! 1-800-882-6789 or FAX 503-370-4383 CapitalPress.com

**The West's BEST Ag News!** newspaper e-paper facebook twitter web CapitalPress.com

**R & G MACHINING AND ENGINE PARTS** COMPLETE DIESEL MACHINE SHOP AND TRUCK REPAIR MULINO, OREGON • SHOP: 503-829-6038 • NATIONWIDE: 1-800-823-6038 We Absolutely, Positively Have The Best Remanufactured Engines Available Anywhere! Huge Inventory • Expert Technical Assistance

**ENGINES INSTALLED PRICING** Incidentals extra. Exchange 100,000 mile warranty when we install! Depending on applications.  
GM 6.2-6.5T, installed.....\$7,495  
Ford 6.4 P/S, installed.....\$12,750  
Ford 94-03 7.3 P/S, installed.....\$8,800  
Cummins 88-02 5.9, installed.....\$8,400  
Cummins 03 & Up, 5.9 C/R, installed.....\$9,450  
Cummins 6.7, installed.....\$10,250

- We grind and weld crankshafts and camshafts
- We weld blocks & cylinder heads
- Exchange connecting rods or connecting rod kits
- Diesel or gas engine kits
- Cylinder head or block O-ringing

All Years & Models: Turbos, Injectors, High Pressure Oil Pumps, Fuel Injection Pumps, Oil Coolers, Computers - Ford, GM Chrysler

**CUMMINS 5.9 MAGNUM** \$5,995 AND CORE \$3,850

**REBUILT DIESEL L/B ENGINES**

CUMMINS	PERKINS & ISUZU
3.9-4BT.....\$4,650	Starting at.....\$5,995
5.9'88-02.....\$4,850	<b>MITSUBISHI &amp; NISSAN</b>
5.9'03 & up.....\$5,150	Starting at.....\$5,995
6.7 C/R.....\$5,450	<b>YANMAR &amp; KUBOTA</b>
<b>FORD</b>	Starting at.....\$4,495
6.0 P/S.....\$5,845	<b>BOBCAT &amp; SHIBAURA</b>
6.4 P/S.....\$6,545	Starting at.....\$3,995
6.7 P/S.....\$7,650	<b>DOOSAN &amp; TAKEUCHI</b>
6.9-7.3 IDI.....\$5,150	Starting at.....\$5,995
7.3 P/S.....\$5,150	<b>DEUTZ</b>
<b>GM</b>	Starting at.....\$9,995
6.6 Duramax.....\$6,550	<b>HINO &amp; IVECO</b>
6.2-6.5.....\$4,895	Starting at.....\$5,995
<b>JOHN DEERE &amp; IH</b>	Starting at.....\$5,995
Starting at.....\$5,995	<b>CATERPILLAR &amp; HYUNDAI</b>
<b>KOBELCO, KOMATSU, HITACHI</b>	Starting at.....\$5,995

We have a large inventory of rebuilt or remanufactured cylinder heads, connecting rods, crankshafts, and blocks on an exchange basis for diesel and gas engines.  
Call on other gas or diesel engines. We are a major rebuilder on all diesel brands. All work done in house!

**WANTED** Cummins 6.7 and 5.9 - Engine Cores R&G Machining 503-829-6038

**IN BUSINESS SINCE 1975.** OVER 250 ENGINES & 450 CYLINDER HEADS IN STOCK! We have a complete line of import diesels and obsolete diesels for your mini excavators or skidsteers. We work and repair all brands! NEED ENGINE PARTS, GAS OR DIESEL - CHECK IT OUT: WWW.EBAY.COM/STR/GRUMPSPERFORMANCECENTER GRUMPSPERFORMANCE@GMAIL.COM

**POWER FLEET & COMMERCIAL SALES** MEDIUM DUTY DEALER

2021 Chevy Med Duty 5500 Service Body with 2 Ton Crane Stock #24406  
Call for your business preferred price!

Jim Church 503-910-7784 jimc@powerautogroup.com	Delana Johnson 503-769-7100 delana@powerautogroup.com	Brian Heinrich 503-504-3629 brian@powerautogroup.com	Ryan Church 503-877-7102 ryan@powerautogroup.com
---	---	--	--

**CHEVROLET BUSINESS ELITE** POWER FLEET - COMMERCIAL **CHEVROLET BUSINESS ELITE**

WWW.POWERAUTOGROUP.COM 503-769-7100

**LOVELL Truck Sales** 53rd Anniversary

<p>1993 International 4700 24' flat bed DT-360 diesel engine, Allison auto trans, ps, 24' flat-bed..... \$12,500</p> <p>2006 Freightliner M2 112 three axle flatbed Cat 335hp, Fuller 10 speed, ps, ac, cruise control, air ride cab and suspension, forklift hook up, 24' flatbed, 268"wb, 230k miles..... \$29,500</p> <p>2012 Peterbilt 4-axle cab and chassis Cummins ISX-525, Fuller 18210c 10spd, air trac suspension, 226" wb, air ride cab, engine brake, 13,200 front axle, 173" c/t, 272" total frame..... \$54,500</p>	<p>2007 Freightliner three axle day cab Cat 430 hp, Fuller 10 speed, 46k lb rear ends, 201" wb, PTO wet kit.498k miles.....\$29,500</p> <p>2004 Clark 36' flat bed set up to haul a moffett fork lift. \$14,500</p>
---	---

**Coming in This Week**  
2007 Freightliner tandem axle day cabs  
2007 International 8600 tandem axle day cab  
1994 Peterbilt 362 cabover long wheelbase daycab  
2007 Peterbilt 386 tandem axle sleeper truck

1-800-451-0012 (503) 266-5886 FAX (503) 266-6903

LOVELLTRUCKSALES.COM LovellTruck@canby.com 680 SW 1st Ave (Hwy 99 E) Canby, OR

**BEST SELLERS** "...Had great results and will definitely use Capital Press again." Len St. Claire, Horseshoe Loop, Lebanon, OR Call 1-800-882-6789 to advertise.

**SUKRAW FARMS** Klamath Falls, OR (541) 891-8740 (541) 884-8740

1997 Thomas Bus \$6,500 OBO \$276914-1

(253) 863-8782 Cell 206-510-4780 sales@pro-truck.com

2004 Freightliner Columbia Tri-Axle Sleeper Tractor Truck, 230" WB, Detroit Engine, 430 Hp, steel frame, air ride susp.....\$20,000

(2) 1998 Mack Mixer 5 axle, 247" WB, 300 Hp, Mack L6 engine, Eaton Fuller 9-spd.....\$29,500

1989 Utility 44'X102" 2-axle Flatbed air ride susp, alum. deck with wood nailers.....\$6,950

2007 Mitsubishi 14' Flatbed Crane Truck Single Axle, 181" WB, 243 Hp, 6-spd manual, steel frame.....\$29,500

www.pro-truck.com \$276852-1

**KENWORTH T800 4-AXLE CHASSIS**

6 TRUCKS @ \$80,000 California Certified for Emissions

Cummins ISX engines, 18-spd. trans., single spd. Eaton rear-ends 4:10 or 4:11 gears w/locker, HENDRICKSON HAUL-MAX WALKING BEAM SUSP.

#22 DR363691 2013, D46-170HP rears, 262" WB, 485hp.....\$80,000  
#27 C132487 2012, D46-170HP rears, 262" WB, 485hp.....\$80,000  
#33 DR363687 2013, D46-170HP rears, 262" WB, 485hp.....\$80,000  
#48 DR363689 2013, D46-170HP rears, 262" WB, 485hp.....\$80,000  
#52 DR363690 2013, D46-170HP rears, 262" WB, 485hp.....\$80,000  
#54 DR363692 2013, D46-170HP rears, 262" WB, 485hp.....\$80,000

CLEAN AND IN EXCELLENT SHAPE! MAINTENANCE RECORDS - REGULAR OIL SAMPLES

Thomas H. Ireland More info: www.irelandtrucking.com  
**IRELAND INCORPORATED** Call Charles Ireland 541-863-1501 Myrtle Creek, OR

**CLASS 8 TRUCKS** 509-534-9088

<p>1998 Volvo WG64T, Cummins ISM 410 hp, Jakes, 10 spd., 4.33 ratio.....\$24,900</p> <p>Peterbilt 335 dump truck, Cat C7, 6 spd., 3.90 ratio, 12' box, pintle hitch, 104K miles.....CALL</p> <p>2003 Sterling LT9500, Cat C-12/8LL, Tuftrac susp., double lockers, CEOF 24', low miles 240,096, crane can come off.....\$39,900</p>	<p>1997 Freightliner FL106, Detroit 4-cyl. Series 50/315 hp, spring ride, low miles.....\$17,900</p> <p>1997 Volvo day cab, Cat 3176B, 9 spd., 3.25 ratio, low miles, 200K.....CALL</p>
---	---

Taking deposits for grain trailer rentals. Call Scott. Spots are filling up fast!!!

216 Vans 216 Vans

Your ad here! Call 800-882-6789

MAWS GUTS ISLAM  
ARIA AERO NAURU  
DOINGDYINGTYING  
DOGTAGS GUESSES  
INE NNW  
THINGTHINKTHICK  
UOMO SAMOS OMNI  
NOPS ROT BOO  
ICES RSVPS CUTS  
CHICKCHECKCHEEK  
AMP IPA  
ITSLATE SPACKLE  
CHEERSHEERSHEEP  
ARENT OREO APSE  
NUKES WEDS SITE

**We deliver your message to the West's Ag Audience, wherever they are!**

- Newspaper
- E-Editions
- Mobile
- Websites
- Flyers
- Custom Publications

Call today to advertise.

**Capital Press** EMPOWERING PRODUCERS OF FOOD & FIBER

800-882-6789 or go to CapitalPress.com