

**899 Heavy & Indust. Eq.**

**1997 John Deere 892D Excavator**, 3' bucket with thumb, recently reconditioned BTI hammer, will separate hammer if desired, still using and still making money, delivery is a possibility, \$49,000. Redmond, OR. 541-706-0280



2000 Ingersol Rand 185 CFM air compressor with 4 KW generator. Skid mount. John Deere Diesel 50 Ft. of hose. Very clean well operating machine from a large California County, \$7900. Located in Twin Falls ID. Call 208-613-0050



**WAGNER Compactor:** WC-17 Low Hours New Batteries. Video Available. \$7000. The Dalles, OR. 800-748-8061 or Call/text 541-993-0228

**REPLACEMENT DECAL SETS**  
Construction, Forestry & Ag Equipment. Fast, Knowledgeable, Reliable Service. 215-536-5339 email: info@CustomServicesCompany.com  
Thousands of sets, Old & New, in our digital inventory. [www.QuipCal.com](http://www.QuipCal.com)



**Towable Diesel Air Compressors.** Many 185s and (4) HP375. Hours range from 130 to 2400. Prices from \$9,500 to \$27,500. Overtime Equipment, LLC. 21338 Hwy 30, Filer ID. 83328. 208-734-3434



2007 Swenson stainless steel sander. 11.6 ft. Brine tanks, controls and hardware included. Very good condition. Work ready, \$4700. Located in Twin Falls ID. Call 208-613-0050



Morooka MST-2200, Diesel, 30" Rubber Tracks, 4926 Hours, Asking \$49,500. Sandy, OR. Call Pepe: 503-544-3232; Call Pat: 503-407-9062



Morooka MST-2200VD Dump Crawler, Diesel, Rubber Tracks, 5637 Hours, Asking \$59,500. Sandy, OR. Call Pepe: 503-544-3232; Call Pat: 503-407-9062



2004 JCB Telehandler 943: John Deere diesel engine. Excellent, solid rubber, \$36,000. Gaston, OR. 503-789-3726



Case 1150H Dozer, 5802 Hours, Newer Undercarriage, 20" Tracks, 124" Blade, Asking \$54,950. Sandy, OR. Call Pepe: 503-544-3232; Call Pat: 503-407-9062



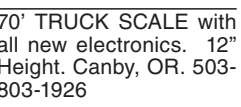
Link-Belt 3900 Quantum Excavator, Cab Guarded, Cat Walks, Hydraulic Thumb, Hydraulic Quick Connect, Dig Buckets, 9110 Hours, Asking \$35,000 Sandy, OR. Call Pepe: 503-544-3232; Call Pat: 503-407-9062

**899 Heavy & Indust. Eq.**

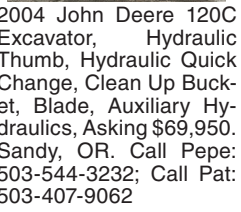
Case 580K Backhoe, 2WD, 4432 Hours, Asking \$14,950. Sandy, OR. Call Pepe: 503-544-3232; Call Pat: 503-407-9062



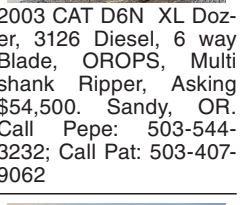
Link-Belt 2650 Excavator, Cab Guarded, Hydraulic Wedge, Hydraulic Thumb, 8735 Hours, Asking \$35,000. Sandy, OR. Call Pepe: 503-544-3232; Call Pat: 503-407-9062



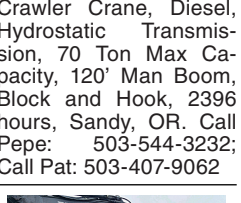
2004 John Deere 120C Excavator, Hydraulic Thumb, Hydraulic Quick Change, Clean Up Bucket, Blade, Auxiliary Hydraulics, Asking \$69,950. Sandy, OR. Call Pepe: 503-544-3232; Call Pat: 503-407-9062



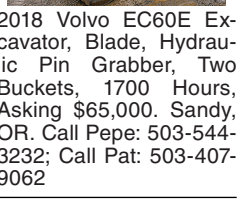
2003 CAT D6N XL Dozer, 3126 Diesel, 6 way Blade, OROPS, Multi shank Ripper, Asking \$54,500. Sandy, OR. Call Pepe: 503-544-3232; Call Pat: 503-407-9062



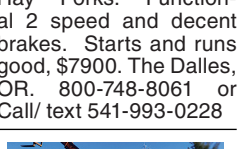
Sumitomo LS-138RH-5 Crawler Crane, Diesel, Hydrostatic Transmission, 70 Ton Max Capacity, 120' Man Boom, Block and Hook, 2396 hours, Sandy, OR. Call Pepe: 503-544-3232; Call Pat: 503-407-9062



2018 Volvo EC60E Excavator, Blade, Hydraulic Pin Grabber, Two Buckets, 1700 Hours, Asking \$65,000. Sandy, OR. Call Pepe: 503-544-3232; Call Pat: 503-407-9062



**Allis Chalmers Wheel Loader.** Includes Bolt-On Bucket and Hay Forks. Functional 2 speed and decent brakes. Starts and runs good, \$7900. The Dalles, OR. 800-748-8061 or Call/text 541-993-0228



2004 JCB Telehandler 943: John Deere diesel engine. Excellent, solid rubber, \$36,000. Gaston, OR. 503-789-3726

**911 Hay Equip.**

**Winter SALE**

**\$50 OFF SMALL BALER** **\$100 OFF LARGE BALER**  
THROUGH FEBRUARY 28TH

**INCREASE FORAGE QUALITY FUEL EFFICIENCY**

**CONSISTENT BALE LENGTHS**

**REDUCE WEAR/DOWN TIME**

**SOLVE KNOTTER PROBLEMS**

**BALE SKIIS** **LARGE KIT** **SMALL KIT**

866-889-3846 [baleskiis@LDAGmachinery.com](http://baleskiis@LDAGmachinery.com)  
[LDAGmachinery.com](http://LDAGmachinery.com)

**899 Heavy & Indust. Eq.**

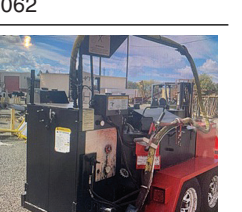
1997 590D John Deere Excavator, 8500 hours, in very good shape to work, 36 inch dig bucket, \$26,700 OBO. Cathlamet, WA. 907-280-8637



Case 9020B Excavator, Hydraulic Thumb, Dig Bucket. Asking \$19,500. Sandy, OR. Call Pepe: 503-544-3232; Call Pat: 503-407-9062



Dresser TD9H Dozer, Rippers, New Undercarriage, Freshly Painted and Decals, Asking \$39,950. Sandy, OR. Call Pepe: 503-544-3232; Call Pat: 503-407-9062



2009 CimLine crack patcher. Tandem axle. 230 gallon, 18ft. heated hose and wand. Isuzu 3 cylinder diesel. Near new tires. Low hours. Former Southern California County machine that has been well maintained and is work ready, \$18,900. Located in Twin Falls ID. Call 208-613-0050

**Capital Press CLASSIFIEDS**  
1-800-882-6789  
[CapitalPress.com](http://CapitalPress.com)

**CASE INDUSTRIAL PARTS**  
We sell genuine, after market, and used CASE parts at discount prices nationwide.  
Call For Free Catalog.

**CENTRAL EQUIPMENT**  
AFTER MARKET & USED PARTS  
Medford, OR  
(888) 593-8749

**905 Antique Farm Eq. & Parts**

1958 Oliver HG-42: hydraulic blade, extra hydraulic connections, loggers cage. Pretty good shape. Original manual and other manuals, \$800. Amity, OR. 503-474-8130

**907 Nursery Equip. & Supplies**

**USED NURSERY CONTAINERS:**  
Used, but reusable nursery containers. All sizes. Inventory changes daily. Call for current availability and prices. Sawyer Farms, Scio OR. 503-769-3417, [juddsfarm@wvi.com](mailto:juddsfarm@wvi.com) (also wanted: used containers)

**FRESH SAWDUST:**  
Consistently fair pricing. 9 Unit Loads Now Available Forest-Grove, OR. For pricing call 503-849-0216



Nursery stakes: 1/4"x6" on metal pallets. Used 4 years. Great condition, \$1/stake. Lafayette, OR. 503-437-4833

**911 Hay Equip.**

**911 Hay Equip.**

**New And Used Parts:** for all models New Holland bale wagons. **Largest Inventory in North America.** Sod Busters Sales, Polson, MT. 877-735-2108 or 406-883-2118

**Large Supply of Rebuilt New Holland Bale Wagons:** Also buying New Holland bale wagons. Sod Busters Sales, Polson, MT. 406-883-2118

#1 Balewagons: Buy, Sell, New Holland 2&3 wide self-propelled, pull-type models, parts, tires, manuals. Caldwell, ID. 208-880-2889 [www.balewagon.com](http://www.balewagon.com)

**Krone Baler:** under 30,000 bales; 1290HDP, \$50,000. Willing to carry contract. Jefferson, OR. 503-932-0012

Hay Grapple, \$3000. (2) Hay elevators. \$100 each. Philomath, OR. 541-929-3031

**New Holland 1085 Bale Wagon:** \$47,500. **New Holland 216 rake,** \$4500. McMinnville, OR. 503-435-9437



MacDon 9352 Swather. Under 2000 hours. 14' 922 auger head with conditioner. Excellent condition. 100% field ready. \$37,500. Madras, OR. 541-777-3459



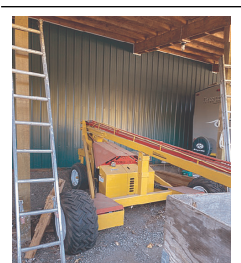
ProAg stacker HDS4R, stacks 6 bales of 3x4, \$18,000. Albany, OR. 503-510-7779

**RCO Baits**  
Gophers • Squirrels  
Voles • Moles  
Dealer Locator  
1-800-214-2248  
Harrisburg, OR 5272070-1

**917 Orchard/Vineyard Equip.**



**Littau Berry Harvester**  
Over the Row: Kubota Diesel Engine. A must have for your farm. Flo-tation tires. Very well maintained. Only 2,406 hours, small berry farm single owner operated, \$65,000. Serious Inquiries only. No trades, no owner financing. Woodburn, OR. 503-881-7200. Email: [bilianbene@gmail.com](mailto:bilianbene@gmail.com)



2010 Orbit Tower Pruner; 20ft boom. Includes saw. Excellent condition. Only 30 hours, \$22,999. Salem, OR. 503-378-9179

**Make your line ads work harder.**  
**Get noticed!**  
• BOLD specific copy  
• CENTER some or all of the copy  
• ADD a yellow background  
• ADD an Attention Getter at the top  
• ADD a photo  
• ADD a logo  
**Our sales reps are waiting to help you.**  
**AD DEADLINES:**  
Classified Display Ads, Weds. @ 10AM  
Classified Line Ads Weds. @ Noon

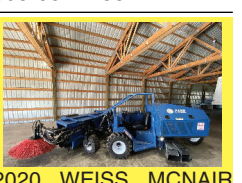
**Capital Press**  
1-800-882-6789  
Fax 503-370-4383  
[CapitalPress.com](http://CapitalPress.com)

**917 Orchard/Vineyard Equip.**

**ORCHARD Clean Up Storm Clean up and Thinning:** Mechanical thinning. Fast, reliable, low impact. FREE estimates. Serving Oregon 541-979-7282



2017 Vrisimo LP2168 Flail Mower. 14' cut width. Scoop knives. Excellent condition, \$10,500. Silverton, OR. 503-991-7138



2020 WEISS MCNAIR 2430 Sweeper. Selling because we are going to a harvester sweeper combination. Only 139 hours. 49HP Cummins Tier 4 Final Sweeper. The hydrostatic transmission makes operation a breeze. The 2430 is compatible with all existing Weiss McNair sweeper heads. Hydraulic control of air gate and chute position, LED light package. Sweeper includes a Posifloat Brush. \$59,500. Albany, OR. 541-979-9776



Orchard sprayer Isuzu minitruck 4x4 with raven 330 controller, 3 boom manifolds, flow meter, centrifugal pump, 150 gallon tank, hydraulic folding booms, fully automated, \$17,000. Dayton, OR. 503-437-4833

**7655 Flory Sweeper** 1880 hours, \$32,000. Silverton, OR. 503-932-0766



FALC EL3000: Orchard floor conditioner. Heavy duty, low use, great condition. Extra set of blades, never used. \$13,000 OBO. Atwater, CA. 209-604-1342



2018 John Deere 5100GN: orchard cab, 3000 hours, warranty to 4000 hours. Financing available, \$44,000. Albany, OR. 503-510-7779



6633 Flory Sweeper: 1962 hours. Nice, \$80,000 Silverton, OR. 503-932-0766

7070 Flory Sweeper: big leaf head, good condition, new radiator this season, 2613 hours, Asking \$53,000. Sherwood, OR. No Friday or Saturday Call. 503-550-2640

**920 Tractors**



John Deere 8345R, 4580 hours, pre def, ILS, IVT, duals, \$149,900. Financing available. Milton-Freewater, OR. 541-968-8575

2440 John Deere, 2220 hours, \$10,000 OBO. Othello, WA. 509-989-0558



8680 Massey Ferguson tractor, duals, weights, 6 remotes, autosteer, 1300+/-hrs, \$170,000  
8770 John Deere almost new tires, 3 pt, hours unknown, \$28,000  
8320 John Deere tractor, 6500 hours, 350 hours on John Deere remain engine, duals, 2nd owner, \$85,000  
8370R John Deere tractor, 1650 hours, ILS, IVT, duals all around, deluxe cab and lights, leather, green star GPS, \$305,000. Silverton, OR. 503-932-0766

1995 John Deere 7200: 2WD, 740 loader, power shift transmission, 6500 hours. Excellent condition, \$37,000. Albany, OR. 541-928-8868

**BEST SELLERS** "...Had great results and will definitely use Capital Press again."  
Len St. Claire  
Horseshoe Loop, Lebanon, OR  
Call 1-800-882-6789 to advertise.

**Farm Seller™**  
AMERICA'S FARM AND RANCH DATABASE

**920 Tractors**

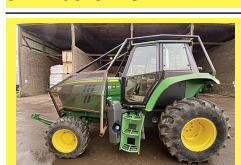
**Steiger Turbo Tiger II:** triple 18.4 rubber, \$6500. Cornelius, OR. 503-793-8525



1998 John Deere 8400: 3886 hours. Excellent condition \$99,500. Stayton, OR. 503-931-8786



Wanted: John Deere 2750 or 2755 MFD, open station. Brownsville, OR. 541-409-3428



The John Deere 6130M Low Profile is the heavy duty orchard tractor that does it all. 1432 hours. Power Quad Transmission. MFWO. This one is fully equipped with a Zuidberg front PTO and 3 pt. It's low enough to maneuver under tree limbs, yet powerful enough to drive heavy duty implements. Power and performance in a small statured package. \$99,500. Albany, OR. 541-979-9776

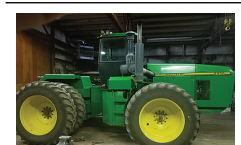
2002 Case IH STX450 Quad track: 450HP, 30" tracks, Trimble Autosteer, 5845 hours, \$84,000. Culver, OR. 541-410-4500

1993 Ford 7740 100HP Tractor: 3 remotes, PTO, 18.4-38 tires, 6566 hours, \$16,000. Culver, OR. 541-410-4500

John Deere 4020: runs good, good rear tires, \$8200. Seaside, OR. 503-440-4925

John Deere 2020 Diesel Allis Chalmers 175 Diesel, \$5,500. Forest Grove, OR. 503-781-2251

John Deere 8760: Power Quad, weights, 3 remotes, PTO, 8694 hours, new motor, updated features, shedded, pictures available, \$31,000. Hillsboro, OR. 503-939-3604



John Deere 8970: Power Quad, weights, 4 remotes, 8654 hours, shedded, pictures available, \$51,000. Hillsboro, OR. 503-939-3604



2018 John Deere 6120M 24 speed, 3 remotes, 1700 hours, \$79,000. Financing available. Albany, OR. 503-510-7779

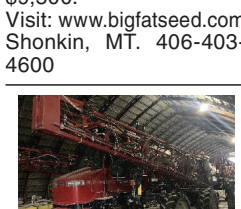
John Deere tires and wheels. 620/70R42. Inners and duals. 600/70R30 fronts. All mounted. Riley, OR. 541-480-8183

**923 Farm Equipment**

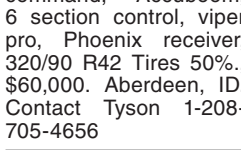
Frontier TM5124 Tandem Disc: 9" spacing, front 24.5" and 26" back. Excellent condition, \$34,500. Bonanza, OR. 541-891-7199



NEW Grain Cleaners: AG1650 Air Gravity grain cleaner, \$18,500. AG440 Air Gravity Grain cleaner, \$9,500. Visit: [www.bigfatseed.com](http://www.bigfatseed.com) Shonkin, MT. 406-403-4600



2008 Case SPX3185 Sprayer, 3637 Hours, 90' booms, 20" nozzle spacing, 750 gallon spherical poly tank, AIM command, Accuboom, 6 section control, viper pro, Phoenix receiver, 320/90 R42 Tires 50%, \$60,000. Aberdeen, ID. Contact Tyson 1-208-705-4656



Rain-Flu 3 Row Planter and Rain-Flu 3 Row bedder with plastic install and drip line attachments Very low hours, excellent shape. Bedder model 2550, planter model 1600, \$29,900. Vancouver, WA. 360-513-1467

**Farm Seller™**  
AMERICA'S FARM AND RANCH DATABASE

**923 Farm Equipment**

Roto-Mold 4,250 gallon black elliptical leg tank. #FS4250-88B with hoop kit #FS4250-HP. Tank has never been used and stored indoors. 146"L x 88W x 101"H; 1617lbs. Hartline, WA. 509-770-5880



John Deere 910 V Ripper, \$1600. John Deere 2450 6 bottom onland plow, \$1600.00. Cornelius OR. 503-793-8231

**Hydra-Pull**  
• 10 MODELS/SIZES • RENTAL OPTIONS • MADE IN USA  
• MANURE & COMPOST • HEAVY DUTY DESIGN  
**BARRTECH**  
Compost / Organics Recycling  
AUTHORIZED DEALER OF PIK RITE SPREADERS.  
509-590-0437 • [www.Barr-Tech.net](http://www.Barr-Tech.net) • Sprague, WA

52762-60-1

**Containers For Sale**  
20' and 40'



REFRIGERATED CONTAINERS AVAILABLE  
**Portland Container**  
9449 N. Burgard Way, Portland OR  
Call Alan Conner (503) 286-5961, Ext.#4  
or 1-800-788-5159, Ext.#4  
Direct (503) 277-3323  
[boxsales@pdxcontainer.com](mailto:boxsales@pdxcontainer.com)  
(Credit Cards Accepted) 5271979-1

**Ask about our Rental/Purchase/Consignment Program.**

It includes 100 hrs of use per month. Free delivery to the Treasure Valley.  
This is a partial list. See our website for a complete list. [www.ray-brothers.com](http://www.ray-brothers.com)

2009 Challenger L348 Baler, 42,000 bales	\$45,000
2014 JD 6140M, 18.4 tires, 16 spd, 6,552 hrs	\$52,000
2015 JD 6175R, 480/85R46 tires, 20 spd, 5,500 hrs	\$85,000
2008 JD 8130, auto track ready, 8,273 hrs	\$85,000
2018 JD 8245R, Ext. Warr, new tires, 4,900 hrs	\$139,000
2009 JD 8430T, new tracks, 3,339 hrs	\$129,000
2015 JD 9570RT, 30 inch track spacing, 2,307 hrs	\$269,000
2019 JD L341 Large Square Baler, 1,660 bales	\$129,000
2015 JD R4038, self propelled sprayer, 1,900 hrs	\$159,000
2014 JD 5680 Combine, duals, good tires, 2,100 hrs	\$100,000
2013 JD 5680 Combine, duals, chopper, yield monitor, 1,850 hrs	\$169,000

**Ray Brothers Equipment**  
(208) 880-6344 • Call or Text Chris  
Ironsides, OR • Financing Available!  
Email for more info  
[CHRISRAY@RAYBROTHERS.NET](mailto:CHRISRAY@RAYBROTHERS.NET)

5271825-1

**Nyssa Tractor & Implement**



**Tired of hearing "BACK ORDERED?"**  
**CALL STEVE**  
[www.nyssatractor.com](http://www.nyssatractor.com)  
Toll Free (833) 372-4020  
Nyssa, OR 5271884-1

**WESTERN TRAILERS**  
BOISE, IDAHO

[WWW.WESTERNTRAILER.COM](http://WWW.WESTERNTRAILER.COM)  
ALL TR