

911 Hay Equip.



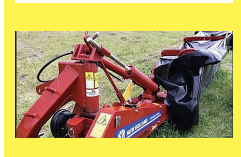
**HAY Equipment Sale!**  
NEW 2020 New Holland RB450 Roto Cut. PRICE REDUCED to \$39,900. Brim Tractor. Lynden, WA. Call/ text 360-815-4668



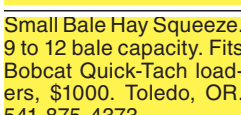
**New Holland BC 5070 Baler:** WAS \$31,900. NOW: \$26,900. Brim Tractor. Eugene, OR. Call/ text 971-240-7606



**New Holland HM 235 Disc Mower.** Was \$9500. NOW \$7900. Brim Tractor. Eugene, OR. Call/ Text 971-240-7606



**New Holland 108M Mower.** Was \$12,900. NOW \$9900. Brim Tractor. Lynden, WA. Call/ text 360-815-4668



**Small Bale Hay Squeeze.** 9 to 12 bale capacity. Fits Bobcat Quick-Tach loaders, \$1000. Toledo, OR. 541-875-4373



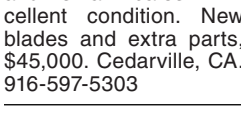
**NEW 2020 New Holland 107M Duradisc Heavy Duty Disc Mower,** \$9900. Brim Tractor. Eugene, OR. Call/ text 971-240-7606



**2019 Sitrex M60 Super:** Square Baler. REDUCED \$15,900. Brim Tractor. Chehalis, WA. Call/ text 360-510-8100



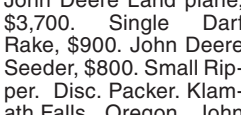
**Newhouse 2015 C5000 Bale Chopper.** Can be used with big, medium and small bales. Excellent condition. New blades and extra parts, \$45,000. Cedarville, CA. 916-597-5303



**2018 Case IH SB531:** Baler. Under 15,000 bales. Hydraulic tension and pickup, \$13,500. Bandon OR. 541-253-6061



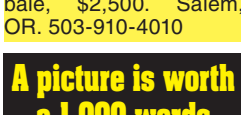
**2000 Lely Lotus 300:** combination tedder/rake. Extra teeth, \$2,500 Bandon, OR. 541-253-6061



**ProAg Stacker model HD4SR.** Stacks 6 bales of 3x4, \$20,000. Albany OR 503-510-7779



**2015 Massey Ferguson 2270XD.** Two available, around 47,000 bales, \$79,000 each. Financing available. Albany, OR 503-510-7779



**2015 Vermeer: Rebel 5410 Round Baler,** new belts, new pick-up tines, PTO, 40HP, low hours: 880 bales, \$13,000 OBO. New Pine Creek, OR. 541-947-2289



**Steffen hay rack with forklift attachment.** 4 bar 32 tooth. Good cylinders and hoses. Could change to tractor loader also. Grab 3 tie or a big bale, \$2,500. Salem, OR. 503-910-4010

911 Hay Equip.

**2016 John Deere L340:** 3x4 Baler approximately 14,000 bales, good shape. Hermiston, OR. 360-749-3080



**Reman Model 1012 Field Bale Stacker,** hauls 18 3' by 4' bales, which leaves the bales in a stack 6 bales tall. Excellent condition, \$19,500 contact Lee at 530-682-8407. Arbutle, CA.

**Truck Conversion Hay Squeeze,** \$15,000. 24ft 5th wheel flatbed, double axle, \$1500. Dayton, OR. 503-868-7357; 503-991-0310

**Ranch Moving Sale**  
(2) 1992 Freeman SP Balers, \$18,000 each. 1085 New Holland Bale wagon, \$55,000. (2) Powder River Creep feeders, \$900 each. International 555 manure spreader, \$1500. Stephens Hay Loader, \$1200. 20ft gooseneck trailer, \$1500. Junction City, OR. 541-953-3608



**Mil-Stak 1030s W BW28:** hardware and extras. Has been setup to run in automatic mode. No longer have big bales, \$9,000. PARAGONAH, UT. 435-590-5446

**New And Used Parts:** for all models New Holland bale wagons. Largest inventory in North America. Sod Busters Sales, Polson, MT. 877-735-2108 or 406-883-2118

**Large Supply of Rebuilt New Holland Bale Wagons:** Also buying New Holland bale wagons. Sod Busters Sales, Polson, MT. 406-883-2118

**#1 Balewagons:** Buy, Sell, New Holland 2&3 wide self-propelled, pulley models, parts, tires, manuals. Caldwell, ID. 208-880-2889  
www.balewagon.com

**2002 Pro Ag 16K Bale Runner.** New hitch New hydraulic hoses, \$18,000. Rufus, OR. Call Max 541-993-5979



**2008 Case IH SB531:** Baler. Under 15,000 bales. Hydraulic tension and pickup, \$13,500. Bandon OR. 541-253-6061



**2000 Lely Lotus 300:** combination tedder/rake. Extra teeth, \$2,500 Bandon, OR. 541-253-6061

**ProAg Stacker model HD4SR.** Stacks 6 bales of 3x4, \$20,000. Albany OR 503-510-7779



**2015 Massey Ferguson 2270XD.** Two available, around 47,000 bales, \$79,000 each. Financing available. Albany, OR 503-510-7779



**2015 Vermeer: Rebel 5410 Round Baler,** new belts, new pick-up tines, PTO, 40HP, low hours: 880 bales, \$13,000 OBO. New Pine Creek, OR. 541-947-2289

**There Are Always Great Deals In Capital Press Classifieds. Call Now And Add Yours!**  
1-800-882-6789

**RCO Baits**  
Gophers • Squirrels  
Voies • Moles  
Dealer Locator  
1-800-214-2248  
Harrisburg, OR 541-972-0119

**917 Orchard/Vineyard Equip.**



**Propane Cannons**  
(4) ZOG Mark 4 propane cannons, like new. Made in Holland. \$210/ each or \$800/ all. Propane tanks additional \$20/ each. Salem, OR. 503-798-3993

917 Orchard/Vineyard Equip.

**Weiss McNair 824 Hazelnut Harvester** with pre-feeder attachment, large fan with trailer, \$15,000. Gales Creek, OR. 503-357-9775

**Weiss McNair Sweeper:** with Deutz diesel motor, all tines header, \$15,000 Gales Creek, OR. 503-357-9775



**2015 Flory Sweeper:** 57 Series, No cab, 7ft head, gas powered, brand new, 15 hours. Asking \$45,500 OBO. Salem, OR. 503-378-9179

**Tree Guards:** corrugated plastic, 16"x12", ready for installation. Mixed new and used, 2750 at 50 cents each. Forest Grove, OR. 503-936-4891



**Orchard sprayer Isuzu minitruck 4x4 w/ raven 330 controller,** 3 boom manifolds, flow meter, centrifugal pump, 150 gal tank, hydraulic folding booms, fully automated, \$17,000. Dayton, OR. 503-437-4833



**2018 John Deere 5100GN:** orchard cab, 2500 hours, warranty to 4000 hours. Financing available, \$45,000. Albany, OR. 503-510-7779



**2018 John Deere 6120M** 24 speed, 3 remotes, 2,300 hours, \$75,000. Financing available. Albany, OR. 503-510-7779



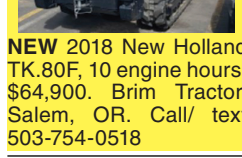
**1998 John Deere 9400 4WD tractor:** 425HP, 710/70R38 radials, 3 point, 4 remotes, 12 speed power shift, \$48,000. Amity, OR. 503-435-7504



**2018 New Holland T4.100V,** 112.40 engine hours, \$57,900. Brim Tractor. Eugene, OR. Call/ text 971-240-7606



**NEW 2018 New Holland TK.80F,** 10 engine hours, \$64,900. Brim Tractor. Salem, OR. Call/ text 503-754-0518



**GK H7 tree digger** 2001 good condition, \$120,000. 2018 like new \$180,000 chopper, \$15,000. Undercut blade, \$2500. Discs, \$2500 each. 3 point attachment, \$8000 Dayton, OR. 503-437-4833



**John Deere 9600 combines** with pickup headers. 3600 hours. Spike and rasp, \$15,000 each. Lafayette, OR. 503-437-4833



**Schmeiser Land Plane Blade.** 40 feet long. Like new. \$23,000. Jefferson, OR. 503-871-6340



**NEW 2018 New Holland T4.110V,** 5.4 engine hours, \$66,900. Brim Tractor Salem, OR. Call/ text 503-754-0518



**2019 Turbo Mist S30P400NS,** REDUCED \$18,900. Brim Tractor. Salem, OR. Call/ text 503-754-0518

**6600 John Deere Diesel Combine,** in excellent condition, \$15,000. King Hill, ID. Dale Jeffrey 208-869-1002. dalejeffrey@equinedustry.com.  
Powdered Corn Cobs. Many uses. Erosion control, floor dry and other uses. Salem, OR. 503-932-8598

920 Tractors



**2008 Kubota M7040 tractor.** Only 964 easy hours. Meticulously maintained, stored in covered area. Larger than stock front wheels and bucket. Comes with 6ft brush hog, \$32,000. Sedro-Woolley, WA. 360-826-2542

**2015 John Deere 7290R:** wide tires and weights, IVT transmission approximately 1100 hours. Excellent condition. Hermiston, OR. 360-749-3080

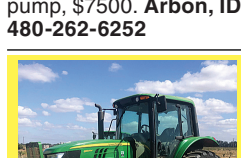
**765 Challenger:** New tracks, GPS, 13,000 hours, \$50,000. Walla Walla, WA. 509-876-1590



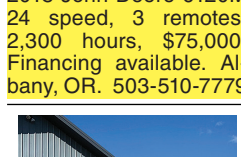
**2017 John Deere 5100 GN:** MFWD, Crop Tractor, 100 HP. Only 748 hours. Very good condition, \$53,000. Located in Vinton, CA. Call Kevin 360-852-7133



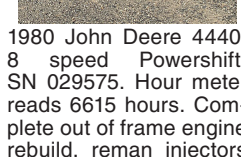
**Steiger Panther Tractor:** 3406 CAT motor 325HP. 7469 hours on the motor. 12-2308 Spicer Transmission 12 speed, has a Jake brake. Tractor weight about 30,000 lbs. Tires 30.5 LR32 30 Ply, 27" rims. Hydraulics is converted to Open System. Needs a hydraulic pump, \$7500. Arbon, ID. 480-262-6252



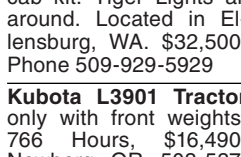
**2018 John Deere 6120M** 24 speed, 3 remotes, 2,300 hours, \$75,000. Financing available. Albany, OR. 503-510-7779



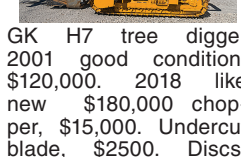
**NEW IA Switch Plows**  
•3 Bottom \$9,995  
•4 Bottom \$10,995  
•5 Bottom \$12,995  
•6 Bottom \$19,995  
•7 Bottom \$21,995  
Poly Wear Armor HD Components Trip Bottoms Bend, OR. Call Scott 541-548-7185 mtcsales.net



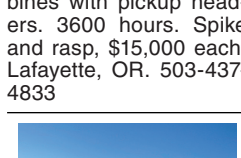
**NEW IA Header Trailers.** Adjustable Bunk Mounts, 8 hole wheels and radial tires.  
•20ft \$5,495  
•25ft \$5,995  
•30ft \$6,495  
•35ft \$7,495  
•40ft \$7,995  
Bend, OR. 541-548-7185; mtcsales.net



**Degelman SM7000 Heavy Harrow:** under 5000 acres, \$35,000. Walla Walla, WA. 509-876-1590



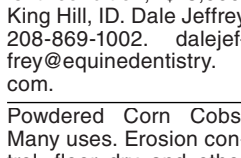
**Kinze 840 Bankout Wagon,** field ready, \$21,000. Walla Walla, WA. 509-876-1590



**2006 R75 Gleaner Combine:** 2613 separator hours, chrome wear package, 4WD, Field Star monitor, \$60,000 Walla Walla, WA. 509-876-1590



**NEW IA Heavy Duty Offset Wheel Discs.** Scraper kit, EZ adjust gang angle, split gang axles, 26" notched blades front and rear.  
•9ft. \$12,400  
•10ft. \$12,900  
•11ft. \$13,400  
•12ft. \$13,900  
•13ft. \$14,400  
•14ft. \$17,900  
•15ft. \$18,900  
•16ft. \$19,900  
•18ft. \$21,900  
8ft.-22ft. 8,000 lbs. Introductory pricing. Order NOW! Bend, OR. 541-548-7185 mtcsales.net



**2019 Turbo Mist S30P400NS,** REDUCED \$18,900. Brim Tractor. Salem, OR. Call/ text 503-754-0518

923 Farm Equipment



**WANTED:** Heavy Duty Offset Disk 12ft to 15ft wide Good condition. Medford, OR. 541-944-6341



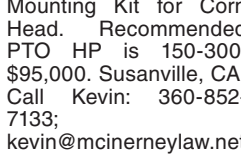
**Portable Toilet Trailers GGAP Compliant** Single or Double Trailers B and L Fabrication, LLC 503-308-1870 www.BNFLAB.com Salem, OR.



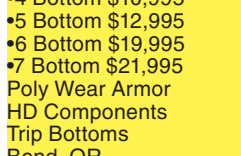
**John Deere 8820 combine,** with 963 corn head, 1000 hours, excellent condition, serial number, 8820X600503, \$15,000 OBO. Toppenish, WA. 509-728-5000



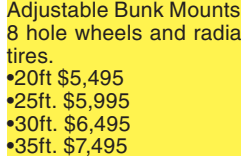
**2020 Dion 300 Scorpion Forage Harvester (Pull-Type) and 2020 Dion F61 Header.** Like New - Used Only Once. 12 Blade Cutting Cylinder Stinger Long Folding Spout with Suspension, Camera, and Light Tandem Axles with 31x15 1/2 Terra Trac Tires. 1000 RPM. Cut Length Range 1/4" to 5/8". Mounting Kit for Corn Head. Recommended PTO HP is 150-300, \$95,000. Susanville, CA. Call Kevin: 360-852-7133; kevin@mcinerneylaw.net



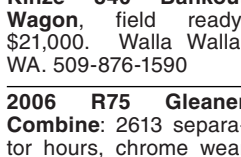
**NEW IA Super Duty Offset Wheel Discs.** EZ Adjust Gang Angle. 30" notched blades front and rear, adjustable scraper kit, 2" gang shafts, split gang shafts, high clearance, 9,000 to 12,000 lbs.  
•7ft \$6,995  
•8ft \$7,395  
•9ft \$7,795  
•10ft \$8,195  
•11ft \$8,495  
•12ft \$8,795  
•13ft \$8,995  
Bend, OR. 541-548-7185 mtcsales.net



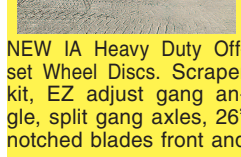
**NEW IA Hydraulic Box Scrapers with hydraulic tilt**  
•LD 7ft. \$2,395  
•LD 8ft. \$2,595  
•LD 10ft. \$2,795  
•LD 12ft. \$2,995  
•LD 8ft. \$3,995  
•HD 10ft. \$4,495  
•HD 12ft. \$4,995  
•HD 14ft. \$5,395  
Bend, OR. 541-548-7185 mtcsales.net



**NEW IA Pasture Aerators:** Bolt on teeth. Heavy Duty Frame.  
•8ft \$7,995  
•10ft \$10,995  
•12ft \$11,995  
•27ft wing fold, \$32,900. Includes cement blocks. Bend, OR. 541-548-7185 mtcsales.net



**NEW IA Heavy Duty Offset Wheel Discs.** Scraper kit, EZ adjust gang angle, split gang axles, 26" notched blades front and rear.  
•9ft. \$12,400  
•10ft. \$12,900  
•11ft. \$13,400  
•12ft. \$13,900  
•13ft. \$14,400  
•14ft. \$17,900  
•15ft. \$18,900  
•16ft. \$19,900  
•18ft. \$21,900  
8ft.-22ft. 8,000 lbs. Introductory pricing. Order NOW! Bend, OR. 541-548-7185 mtcsales.net



**9760 John Deere,** late 60 series with all 70 series updates, 2900 engine hours, 2280 separator hours, big top hopper extension, can come with GS2630, for yield mapping, new elevator chains 200 hours ago, great condition, ready to go to the field, \$92,500 OBO. Lebanon, OR. 541-990-1789

**IF YOU HAVE A BEEF -** sell it in next week's Capital Press!

**Ask about our Rental/Purchase/Consignment Program.** It includes 100 hrs of use per month. Free delivery to the Treasure Valley.

**This is a partial list. See our website for a complete list. www.ray-brothers.com**

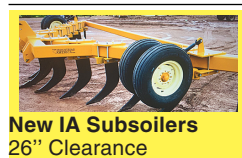
1985 JD 4650, power-shift, 480/85r42	\$22,000
2017 JD 6120R, Ext. Warr, 1,500 hrs	\$89,000
2013 JD 5670, duals, 2306 eng. hrs	\$100,000
2014 JD 9360R, good tires, 3point, 6,855	\$115,000
2012 JD 7280R, duals, IVT Trans, 5,200 hrs	CALL FOR PRICE
1999 JD 7810, excellent condition, 12,000 hrs	\$48,000
2019 JD 9470RT, Ext. Warr, 4,984 hrs	\$159,000
1996 JD 7400, creeper gear 14.9r46 and 14.9r30	\$35,000
2018 JD 8245R, front weights, new tires, 4,900 hrs	\$139,000
2012 JD 9670 STS, used, 1,200 hrs	\$95,000
2005 JD 9660 WTS, used, 4,700 hrs	\$29,000

**Ray Brothers Equipment**  
(208) 880-6344 • Call or Text Chris  
Ironsides, OR • Financing Available!  
Email for more info  
CHRISRAY@RAYBROTHERS.NET

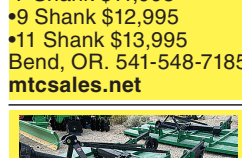
923 Farm Equipment



**Equipment Seat Covers**  
Fits: Tractors, Forklifts, Loaders, Backhoes, Skid Steers, Excavators, Semi Trucks, More.  
541-401-5933  
EquipmentSeatCovers.com



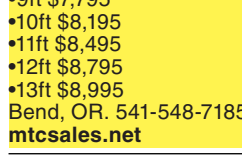
**NEW IA Subsoilers**  
26" Clearance  
•3 Shank \$2,995  
•5 Shank \$3,795  
•7 Shank \$4,895  
Gauge Wheel Set, Add \$995.  
•HD Subsoilers with Dual Gauge Wheels. Weight 4,500 to 5,500 lbs. 30" Clearance.  
•9 Shank \$11,995  
•7 Shank \$12,995  
•11 Shank \$13,995  
Bend, OR. 541-548-7185 mtcsales.net



**NEW IA Rotary Mowers**  
•6ft. 3 Point \$1,995  
•7ft. 3 Point \$2,495  
•10ft. 3 Point \$4,995  
•12ft. 3 Point \$4,995  
Bend, OR. Call Scott 541-548-7185. Visit: mtcsales.net



**NEW IA Tandem and Offset Wheel Discs.**  
•7ft \$6,995  
•8ft \$7,395  
•9ft \$7,795  
•10ft \$8,195  
•11ft \$8,495  
•12ft \$8,795  
•13ft \$8,995  
Bend, OR. 541-548-7185 mtcsales.net



**NEW IA Super Duty Offset Wheel Discs.** EZ Adjust Gang Angle. 30" notched blades front and rear, adjustable scraper kit, 2" gang shafts, split gang shafts, high clearance, 9,00