

210 Trucks



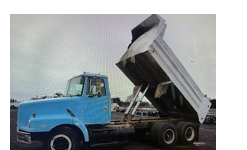
2005 IHC Paystar 5500i tandem dump truck. 15 yard. Stainless Steel dump bed with 28in. live chain floor with removable conveyor cover and regular tailgate with metered gate discharge. Cummins ISX 435HP Diesel. Eaton 13 speed. PS, AC, CC, Jake. Brand new 11/22.5 radials. Bed alone is \$70K new. One owner former State truck that is in like new condition. Well maintained! \$36,900. Located in Twin Falls ID. Call 208-613-0050

210 Trucks

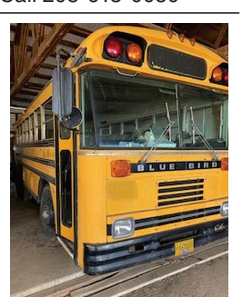


2002 IHC 2674 tandem axle dump truck. 15 yard. with load tarp. 43,000 ACTUAL MILES. 2200 Hours. Cummins N-14 diesel with ALLISON 6 speed AUTOMATIC. PS, PW, CC, AC, JAKE BRAKE and SIDE LOCKER rears. 80% first run 11/22.5 radials. Former State DOT truck that has been well maintained with all service records. Fantastic condition. Runs drives and operates like new, \$42,000. Located in Twin Falls ID. Call 208-613-0050

210 Trucks



1991 Volvo tandem axle dump truck 15 yard. CAT 325 HP diesel. 13 speed transmission. Good rubber. NO RUST. Good running and well operating older truck, \$12,900. Located in Twin Falls ID. Call 208-613-0050

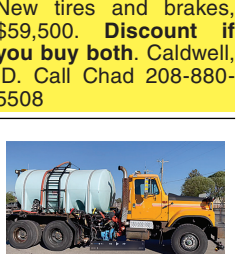


1989 Bluebird School Bus. Approximately 26' long, 25 passenger capacity, 6 cylinder. Diesel motor, Auto Transmission. Runs and drive great. Nice bus, \$6000 Call Daniel 503-508-2207

1982 Ford with CAT engine, 23ft bed and hoist with tag axle, \$3900. 20ft steel bed rack and hydraulic tailgate, \$1000. 6" hydraulic scissors hoist, \$700. (2) 6"x72" hydraulic cylinder. Dearborn Loader for Ford or Ferguson tractor, \$750. Turner, OR. 503-930-1706

210 Trucks

2014 Kenworth 660 with 732,000 miles. Cummins 525HP, 18 speed, wet kit, \$38,500. 2011 Trinity 4 axle with front and back axle lift, Auto tarp. New tires and brakes, \$59,500. Discount if you buy both. Caldwell, ID. Call Chad 208-880-5508



1992 IHC 2574 Water Truck with 2600 gallon poly tank. 6 spray heads. Has Draft. Cummins M-11, 370HP. RTLO 13 speed. Jake, PS, CC. Tank and all spray and pump apparatus are less than 6 years old. 80% rubber. 190K. miles. Former State truck that is clean, well maintained and RUST FREE, \$21,000. Located in Twin Falls ID. Call 208-613-0050



1992 White GMC AutoCar tandem axle dump truck. 16 Ft. dump bed. 190K ACTUAL MILES. 10.3 L CAT Diesel. 370HP. 13 speed. Jake. PS, CC, AC. 18K front axle. Hendrickson spring rears. 80% radials. This one owner RUST FREE former Municipal truck from Southern California has been well maintained and is in near new condition, \$31,900. Located in Twin Falls ID. Call 208-613-0050

210 Trucks



1994 GMC TOPKICK with ALTEC AM855 62 FT. WH. manlift. 40,000 ACTUAL MILES. CAT 3126 DIESEL. Allison Automatic. PS, AC. Former city truck from the Los Angeles area. Well maintained and clean as new and operates, runs and drives like a new truck, \$19,900. Located in Twin Falls ID. Call 208-613-0050



1996 Ford LN7000 with mechanic's bed, 6500 LB. All hydraulic Auto Crane, 160 CFM Sullair Rotary screw air compressor, PTO Drive and Honda 3500 Watt Gen-set. Cummins 5.9 Diesel. Allison Auto transmission. PS, AC. 80,000 ACTUAL MILES. One owner truck from a large Southern California County. In near new condition, \$15,900. Located in Twin Falls ID. Call 208-613-0050

210 Trucks



1999 IHC 2674 tandem dump truck. 15 yard. 105,073 ACTUAL MILES. 5000 hours. Cummins N-14 Diesel. Fuller 13 speed. Jake. PS, AC, CC, PW. Rear locker differentials. Hendrickson spring rears. 18,000 Lb. front axle. 70% 22.5 radials. One owner former State truck that has had excellent fleet maintenance, is clean and runs and operates like new. \$29,900. Located in Twin Falls ID. Call 208-613-0050



1999 Kenworth T600 Cummins N14 460+, 5 spd., 3.55 ratio.....\$24,900

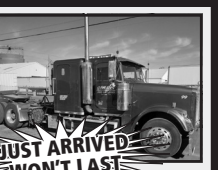
1988 Kenworth T800 with 21ft. roller deck dump bed. NTC Cumset. Allison Diesel. 13 speed. Jake, AC, PS. 236K MILES. 70% 11/225 radials. Very clean and well maintained original owner truck that is rust free and work ready, \$13,900. Located in Twin Falls ID. Call 208-613-0050

210 Trucks

CLASS 8 TRUCKS
509-534-9088



2000 Sterling Crane Truck, CAT C12, 8LL trans., 46k rears, lockers, 20k front, TuffTrac suspension.....\$39,900



JUST ARRIVED WON'T LAST!
1999 Freightliner Classic, CAT C15, 550 hp, 13-spd., flat top sleeper, nice clean interior!.....CALL



1999 Kenworth T600 Cummins N14 460+, 5 spd., 3.55 ratio.....\$24,900



2006 Kenworth T800 Cat C15, 10-spd., 3.55 ratio, A/C.....\$37,900



1997 International 2574, Cummins, Jakes, 15-spd., Walking beam, 20K front axle, double frame, low miles, great feed lot truck.....CALL



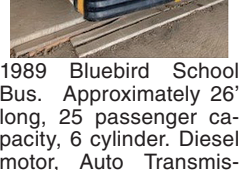
A-Trains available FOR RENTAL!
Daily, Weekly, Monthly Rates. Reserve yours today!
Call Scott



1992 Ford F800 SEWER JETTER TRUCK. 2003 model Sewer Equipment of America Jetter system. 2000 gallon water tank. 43,000 ACTUAL MILES on truck. 6 cylinder Diesel. Allison transmission. Near new radials. Exceptionally clean one owner former City truck that runs drives and operate like new, \$12,900. Located in Twin Falls ID. Call 208-613-0050



2000 IHC 2674 tandem axle semi tractor. 110K ACTUAL MILES. 4300 HOURS. CAT C-12, 410 HP. RTLO 13 speed. 214 WB. PS, AC, CC. Jake. 90% 11/22.5 radials. Hendrickson spring rears. Spotlessly clean well maintained truck from a State Fire Agency. Like New Condition! \$29,000. Located in Twin Falls ID. Call 208-613-0050



Flatbed FL70 Freightliners. 4 FL70 Flatbeds, 2 with Cat diesels, 2 with Cummins diesels. All 4 standard 6 speed transmission. Years. 1996, 1996, 1999, 2001. All have dual 45 gallon fuel tanks and 26,000 GVW - 34,000 GVW. Prices range from \$6500 - \$12,500. Bed length from 20' to 24' long. Low miles on 3 of the 4 trucks, good condition, road ready. For detailed info on individual trucks, call Daniel 503-508-2207



2001 IHC 4900 single axle dump truck. 7 to 8 yard. DT466 Diesel. Allison transmission. Automatic. PS, AC, CC. 150K. ACTUAL MILES. Near new 11/22.5 radials. Very clean and well maintained former State truck that is RUST FREE and work ready, \$18,900. Located in Twin Falls ID. Call 208-613-0050



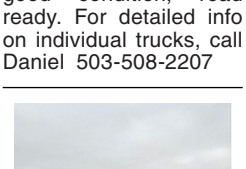
1965 GMC 6X6 FIRETRUCK. 302 GCM 6 cylinder gas. Automatic transmission. HI-LO transfer. 1500 Gallon tank. Hose reel with hose. Has draft. Good rubber. 25,000 Miles. All original military firetruck later acquired by an Oregon County. Firetruck runs drives and operates well and is work ready, \$9500. Located in Twin Falls ID. Call 208-613-0050



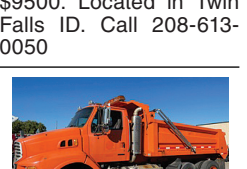
2003 Sterling tandem axle dump truck. 15 yard bed, load tarp. 103,000 ACTUAL MILES. 470HP. Detroit 60 Diesel. RTLO 13 speed. Jake. Side lock rears. 18K front axle. PS, AC, PW, CC. Plumbed for pup. RUST FREE. One owner former State truck with service records that is in near new condition. Work ready, \$39,900. Located in Twin Falls ID. Call 208-613-0050



1994 IHC 2674 with 87ft. reach Altec AM855 with elevating and overcenter. 83,000 ACTUAL MILES. DT466 Diesel. 13 speed transmission, 2 man bucket, full rotation with 700 Lb. capacity and 2000 Lb. material handler. Truck is a one owner that was certified when taken out of service. Well maintained with no leaks, is very clean and runs operates and drives like new. WORK READY, \$29,000. Located in Twin Falls ID. Call 208-613-0050

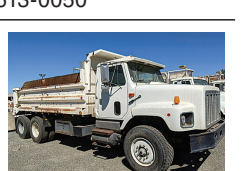


2003 Freightliner, M2 Business Class, 18' Flatbed, Wood deck in OK condition. 6 cylinder Caterpillar Diesel motor. Dual 50 gallon tanks, Standard 6 speed transmission. 199,695 miles. 26,000 GVW. Nice Truck, Road Ready, \$14,500. Call Daniel 503-508-2207



2003 Sterling tandem axle dump truck. 15 yard bed, load tarp. 103,000 ACTUAL MILES. 470HP. Detroit 60 Diesel. RTLO 13 speed. Jake. Side lock rears. 18K front axle. PS, AC, PW, CC. Plumbed for pup. RUST FREE. One owner former State truck with service records that is in near new condition. Work ready, \$39,900. Located in Twin Falls ID. Call 208-613-0050

There Are Always Great Deals In Capital Press Classifieds. Call Now And Add Yours! 1-800-882-6789



1994 IHC 2674 Tandem axle dump truck. 16 Ft. bed. Load tarp. 10.2 L. 3176 CAT Diesel, 370HP. 10 speed. 154,000 ACTUAL MILES. Jake, PS, AC, CC. 18,000 lb. front axle. Hendrickson spring rears. Side lockers. 80% Radial tires. RUST FREE spotlessly clean and well maintained one owner Municipal truck from Southern California. Work Ready, \$29,000. Located in Twin Falls ID. Call 208-613-0050



2003 Kenworth W900L tandem axle sleeper tractor, Caterpillar C15-6NZ 15.2L/445 Hp, Eaton Fuller 18-spd., 242" WB, 22,527 hours OnBoard.....\$55,000



2004 International tandem axle tractor, Caterpillar C15/435 Hp, 10-spd., 169" WB, OnBoard Diagnostics (ECM-1, 207,450 miles).....\$15,000



2006 International tandem axle tractor, Detroit Series 60-12.7L/515 Hp, 10-spd., OnBoard Diagnostics (ECM-275,220 miles).....\$12,500



2007 Freightliner Columbia tri-axle sleeper tractor, Caterpillar C-15 Acert/475 Hp, 13-spd., 246" WB, OnBoard Diagnostics (ECM-833,692 Miles).....\$19,500

CAPITAL PRESS CLASSIFIEDS GET RESULTS!

We deliver your message to the West's Ag Audience, wherever they are!

- Newspaper
- E-Editions
- Mobile
- Websites
- Flyers
- Custom Publications

Call today to advertise.

Capital Press
EMPOWERING PRODUCERS OF FOOD & FIBER

800-882-6789
or go to
CapitalPress.com

LINE CLASSIFIEDS
Call Toll-Free
1-800-882-6789
FAX: (503) 370-4383
Deadline Wed. at Noon (Holidays may differ)
CapitalPress.com

WANTED

We've Moved to Salem, OR!

"Fairly Honest Neil"
I BUY TRUCKS
Specializing In Running or NOT In The Pacific Northwest
503-521-6935
HAGERMAN INC
11000 Portland NE, Salem, OR
neil@hagermanparts.com

KENWORTH T800 4-AXLE CHASSIS

6 TRUCKS @ \$80,000

Cummins ISX engines, 18-spd. trans., single spd. Eaton rear-ends 4:10 or 4:11 gears w/locker, HENDRICKSON HAUL-MAX WALKING BEAM SUSP.

- #33 DR363687 2013, D46-170HP rears, 262" WB, 485hp.....\$80,000
- #39 CJ317333 2012, D46-170HP rears, 262" WB, 485hp.....\$80,000
- #42 CJ317336 2012, D46-170HP rears, 271" WB, 485hp.....\$80,000
- #48 DR363689 2013, D46-170HP rears, 262" WB, 485hp.....\$80,000
- #52 DR363690 2013, D46-170HP rears, 262" WB, 485hp.....\$80,000
- #78 CJ317337 2012, D46-170HP rears, 272" WB, 485hp.....\$80,000
- #19 C1217332 2012, D46-170HP rears, 262" WB, 485hp.....SOLD
- #74 DR363688 2013, D46-170HP rears, 262" WB, 485hp.....SOLD
- #76 CJ317335 2012, D46-170HP rears, 262" WB, 485hp.....SOLD
- #94 R066820 2004, DSP-463P rears, 270" WB, 475hp.....SOLD

CLEAN AND IN EXCELLENT SHAPE! MAINTENANCE RECORDS - REGULAR OIL SAMPLES

Thomas H. Ireland More info: www.irelandtrucking.com
IRELAND INCORPORATED Call Charles Ireland 541-863-1501 Myrtle Creek, OR

R & G MACHINING AND ENGINE PARTS
COMPLETE DIESEL MACHINE SHOP AND TRUCK REPAIR
MULINO, OREGON • SHOP: 503-829-6038 • NATIONWIDE: 1-800-823-6038
We Absolutely, Positively Have The Best Remanufactured Engines Available Anywhere!
Huge Inventory • Expert Technical Assistance

REBUILT DIESEL L/B ENGINES	
CUMMINS	PERKINS & ISUZU
3.9-4BT.....\$4,150	Starting at.....\$5,995
5.9 '88-'02.....\$4,250	MITSUBISHI & NISSAN
5.9 '03 & up.....\$4,650	Starting at.....\$5,995
6.7 C/R.....\$4,950	YANMAR & KUBOTA
FORD	Starting at.....\$4,495
6.0 P/S.....\$5,345	BOBCAT & SHIBAURA
6.4 P/S.....\$6,045	Starting at.....\$3,995
6.7 P/S.....\$7,150	DOOSAN & TAKEUCHI
6.9-7.3 IDI.....\$4,650	Starting at.....\$5,995
7.3 P/S.....\$4,650	MERCEDES
GM	Starting at.....\$8,995
6.6 Duramax.....\$6,050	HINO & IVECO
6.2-6.5.....\$4,395	Starting at.....\$5,995
JOHN DEERE & IH	Starting at.....\$5,995
Starting at.....\$5,995	KOBELCO, KOMATSU, HITACHI
CATERPILLAR & HYUNDAI	Starting at.....\$5,995

We have a large inventory of rebuilt or remanufactured cylinder heads, connecting rods, crankshafts, and blocks on an exchange basis for diesel and gas engines.

Call on other gas or diesel engines. We are a major rebuilder on all diesel brands. All work done in house!

OVER 250 ENGINES & 450 CYLINDER HEADS IN STOCK!
We have a complete line of import diesels and obsolete diesels for your mini excavators or skidsteers. We work and repair all brands!

NEED ENGINE PARTS, GAS OR DIESEL - CHECK IT OUT:
WWW.EBAY.COM/STR/GRUMPSPERFORMANCECENTER
GRUMPSPERFORMANCE@GMAIL.COM

POWER FLEET & COMMERCIAL SALES
MEDIUM DUTY DEALER

2021 Chevrolet Silverado MD Work Truck
Stock #24469

Call for your business preferred price!

Jim Church 503-910-7784 jimc@powerautogroup.com	Delana Johnson 503-769-7100 delana@powerautogroup.com	Brian Heinrich 503-504-3629 brian@powerautogroup.com	Ryan Church 503-877-7102 ryan@powerautogroup.com
--	--	---	---

CHEVROLET BUSINESS ELITE
POWER FLEET - COMMERCIAL
WWW.POWERAUTOGROUP.COM
503-769-7100

LOVELL Truck Sales
53rd ANNIVERSARY

1994 Freightliner 4-axle transfer dump, C-12 CAT, 8 LL trans, Chambers susp., 46k rears, 14,600 front, 4-axle transfer trailer, call for more details.....\$29,500

2015 Freightliner 3-axle day cab. DD13 450 hp, Fuller 10-spd., 178" WB PS, A/C, cruise, engine brake, air slide 5th wheel, dump valve, air ride cab, 356k miles.....\$42,500

2006 International 4300 24' flatbed, DT-466, Allison AC10 trans, PS, A/C, 24' bed with tuckaway liftgate, 187k miles.....\$19,500

1996 Wabash 45' reefer trailer, Thermo King SB3 SR reefer, rail gate \$5,500
Also, 2001 Great Dane 48' reefer trailer. Carrier Phoenix reefer (non-working), nice rail gate \$5,500

1-800-451-0012
(503) 266-5886
FAX (503) 266-6903

LOVELLTRUCKSALES.COM
LovellTruck@canby.com
680 SW 1st Ave (Hwy 99 E)
Canby, OR