

210 Trucks



1996 Freightliner Classic: 470 Detroit, super 10 speed, 22" tires, brand new wet kit, never used. Less than 100,000 on engine rebuild. Full service, oil changed, A/C charged. New air bags. \$45,000 Twin Falls, ID. 208-539-5850



2005 IHC Paystar 5500i tandem dump truck. 14ft. Stainless Steel dump bed with 28in. live chain floor with removable conveyor cover and regular tailgate with metered gate discharge. Cummins ISX 435HP Diesel. Eaton 13 speed. PS, AC, CC, Jake. Brand new 11/22.5 radials. Bed alone is \$70K new. One owner former State truck that is in like new condition. Well maintained! \$36,900. Located in Twin Falls ID. Call 208-613-0050

**HOT! SAVINGS** at Capital Press  
1-800-882-6789  
CapitalPress.com

210 Trucks

**CLASS 8 TRUCKS**  
509-534-9088



**1999 Kenworth T600**  
1999 Kenworth T600  
Cummins N14 460+,  
5 spd., 3.55 ratio...**\$14,900**



**2006 Kenworth T800**  
Cat C15, 10-spd., 3.55 ratio, A/C.....**\$37,900**



**2007 International 9200** CAT C13, 410 Hp, 10 spd., autoshift, rear diff. lock, A/C, engine overhaul history.....**\$27,900**



**1997 Freightliner FLD120**, Detroit S60 12.7, 13-spd., walking beam, drop axle, double frame.....**\$39,900**



**1997 International 2574**, Cummins, Jakes, 15-spd., Walking beam, 20K front axle, double frame, low miles, great feed lot truck.....**CALL**



**A-Trains available FOR RENTAL!**  
Daily, Weekly, Monthly Rates. Reserve yours today!  
**Call Scott**  
\$260552-1

**CLASSIFIEDS SELL!**

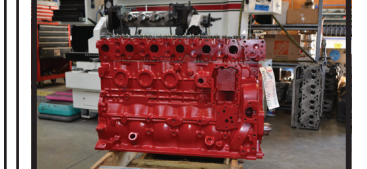
**R & G MACHINING AND ENGINE PARTS**  
COMPLETE DIESEL MACHINE SHOP AND TRUCK REPAIR  
MULINO, OREGON • SHOP: 503-829-6038 • NATIONWIDE: 1-800-823-6038

We Absolutely, Positively Have The Best Remanufactured Engines Available Anywhere!  
Huge Inventory • Expert Technical Assistance

**ENGINES INSTALLED PRICING**  
Incidentals extra, Exchange 100,000 mile warranty when we install! Depending on applications.

GM 6.2 - 6.5T, installed.....	\$6995
Ford 6.4 P/S, installed.....	\$12,750
Ford 94-03 7.3 P/S, installed.....	\$7900
Cummins 88-02 5.9, installed.....	\$8400
Cummins 03 & Up, 5.9 C/R, installed.....	\$9450
Cummins 6.7, installed.....	\$10,250

- We grind and weld crankshafts and camshafts
  - We weld blocks & cylinder heads
  - Exchange connecting rods or connecting rod kits
  - Diesel or Gas engine kits
  - Cylinder head or block O-ring
- All Years & Models:** Turbos, Injectors, High Pressure Oil Pumps, Fuel Injection Pumps, Oil Coolers, Computers - Ford, GM Chrysler



**CUMMINS 5.9 MAGNUM**

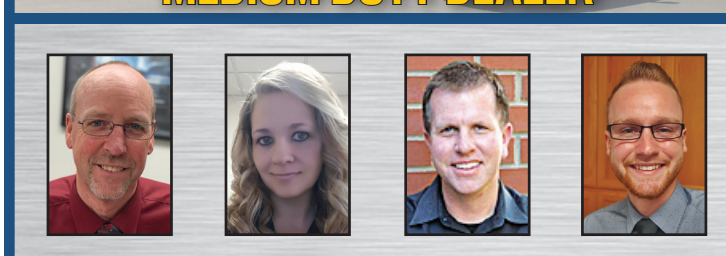
**IN BUSINESS SINCE 1975.**

**OVER 250 ENGINES & 450 CYLINDER HEADS IN STOCK!**  
We have a complete line of import diesels and obsolete diesels for your mini excavators or skidsteers. We work and repair all brands!

**NEED ENGINE PARTS, GAS OR DIESEL - CHECK IT OUT:**  
WWW.EBAY.COM/STR/GRUMPYPERFORMANCECENTER  
GRUMPYPERFORMANCE@GMAIL.COM

\$260816-1

**POWER FLEET & COMMERCIAL SALES**  
MEDIUM DUTY DEALER



**Jim Church** 503-910-7784  
**Delana Johnson** 503-769-7100  
**Brian Heinrich** 503-504-3629  
**Ryan Church** 503-877-7102

 <b>Silverado Med Duty Trucks</b> Ranging from 4500-6500 Call for your business preferred price	 <b>2020 Chevy 5500XD LCF Diesel</b> Call for your business preferred price
--	---

**CHEVROLET BUSINESS ELITE** **POWER FLEET - COMMERCIAL** **CHEVROLET BUSINESS ELITE**  
WWW.POWERAUTOGROUP.COM  
503-769-7100  
\$242560-1

**LOVELL Truck Sales**  
53rd ANNIVERSARY

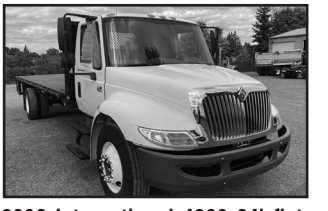


1994 Freightliner 4-axle transfer dump, C-12 CAT, 8 LL trans, Chambers susp., 46k rears, 14,600 front, 4-axle transfer trailer, call for more details.....**\$29,500**



2005 Kenworth T-800, 4-axle, CAT C-15 470hp, Fuller 10 spd., PS, A/C, cruise, air slide 5th wheel, dump valve..... **\$36,500**

**1-800-451-0012**  
**(503) 266-5886**  
**FAX (503) 266-6903**



2006 International 4300 24' flatbed, DT-466, Allison AC10 trans, PS, A/C, 24' bed with tuckaway liftgate, 187k miles..... **\$19,500**



1996 Wabash 45' reefer trailer, Thermo King SB3 SR reefer, rail gate **\$5,500**  
Also, 2001 Great Dane 48' reefer trailer. Carrier Phoenix reefer (non-working), nice rail gate **\$5,500**

**LOVELLTRUCKSALES.COM**  
LovellTruck@canby.com  
680 SW 1st Ave (Hwy 99 E)  
Canby, OR  
\$246664-1

210 Trucks



1992 Ford F800 SEWER JETTER TRUCK. 2003 model Sewer Equipment of America Jetter system. 2000 gallon water tank. 43,000 ACTUAL MILES on truck. 6 cylinder Diesel. Allison transmission. Near new radials. Exceptionally clean one owner former City truck that runs drives and operate like new, \$12,900. Located in Twin Falls ID. Call 208-613-0050



2001 IHC 4900 single axle dump truck. 7 to 8 yard. DT466 Diesel. Allison 6 speed. Automatic. PS, AC, CC, 150K. ACTUAL MILES. Near new 11/22.5 radials. Very clean and well maintained former State truck that is RUST FREE and work ready, \$18,900. Located in Twin Falls ID. Call 208-613-0050



1994 IHC 2674 with 87ft. reach Altec AM855 with elevator and overcenter. 83,000 ACTUAL MILES. DT466 Diesel. 13 speed transmission, 2 man bucket, full rotation with 700 Lb. capacity and 2000 Lb. material handler. Truck is a one owner that was certified when taken out of service. Well maintained with no leaks, is very clean and runs operates and drives like new. WORK READY, \$29,000. Located in Twin Falls ID. Call 208-613-0050



2002 IHC 2674 tandem axle dump truck. 15 yard. with load tarp. 43,000 ACTUAL MILES. 2200 HOURS. Cummins N-14 diesel with ALLISON 6 speed AUTOMATIC. PS, PW, CC, AC, JAKE BRAKE and SIDE LOCKER rears. 80% first run 11/22.5 radials. Former State DOT truck that has been well maintained with all service records. Fantastic condition. Runs drives and operates like new, \$42,000. Located in Twin Falls ID. Call 208-613-0050



1996 IHC 4900 cab and chassis. DT 466 Diesel. Allison 6 speed AUTOMATIC. PTO CAPABLE. PS, AC, CC. Double frame, 16ft. 33,000GVW. Will take 16ft. to 18ft. bed. Former California Dept. of Forestry truck. Excellent condition. Work ready, \$12,900. Located in Twin Falls ID. Call 208-613-0050



2000 IHC 2674 tandem axle semi tractor. 110K ACTUAL MILES. 4300 HOURS. CAT C-12, 410 HP. RTLO 13 speed. 214 WB. PS, AC, CC. Jake. 90% 11/22.5 radials. Hendrickson spring rears. Spotlessly clean well maintained truck from a State Fire Agency. Like New Condition! \$29,000. Located in Twin Falls ID. Call 208-613-0050

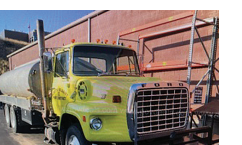
**BEST SELLERS . . .**  
"Sold everything in the herd but a couple of old bulls."  
Kester Ranch, Cottage Grove, OR  
Call 1-800-882-6789 and sell too!

**222 Truck/ Auto Parts & Accessories**

**Maybe It's A Repair... Not A Rebuild**  
Maybe you don't need a full rebuild. Maybe a repair is the best choice this time. A lot depends on symptoms and some discussion about your problem, we give you the choice... maybe even a new or reman unit. We engage you, the customer, to get the best options for you. We enjoy talking to our customers...finding out how the truck is used, the loads you carry, the type of roads. This helps us help you decide. You, the customer...our Boss, will make the final decision on what type of work you need completed. **It's not about how much we can charge to get a job done.....it's about knowing our customer's needs. We never forget that.**

**TRUCK GEAR SPECIALISTS**  
3620 Olympic Street  
Springfield, OR  
541-747-2849  
\$221429-1

210 Trucks



1978 Ford 9000 with 4000 gallon stainless steel nurse tank. Godiva pump with suppression capability hose and reel. Cummins NTC Diesel. Eaton transmission. 32,000 ACTUAL MILES. 2900 HOURS. Near new 11/22.5 radial tires. One owner former County Fire Dept. truck that is in like new condition. Well maintained and work ready, \$21,900. Located in Twin Falls ID. Call 208-613-0050



1991 Volvo tandem axle dump truck 15 yard. CAT 325 HP diesel. 13 speed transmission. Good rubber. NO RUST. Good running and well operating older truck, \$12,900. Located in Twin Falls ID. Call 208-613-0050

**CAPITAL PRESS CLASSIFIEDS GET RESULTS!**

**Pro Truck**  
**(253) 863-8782**  
Cell 206-510-4780  
sales@pro-truck.com



2006 Volvo VNL single axle truck tractor, Cummins ISX 14.9L/424 Hp, Eaton Fuller auto., OnBoard Diagnostics (ECM-1,244,012 miles), 150" WB.....**\$12,500**



1997 Fruehauf 48' stepdeck trailer, 11' upper, 37' lower, 39" height.....**\$12,950**

**www.pro-truck.com**  
\$260786-1

211 Pickups



1999 Ford XLT F350: 7.3 power stroke diesel, 6 speed standard transmission with flatbed, \$16,500 FIRM. (Pickup bed available). Juntura, OR. 541-604-5187



2000 Ford F-350 Crew cab, longbed, canopy, 4x4, manual transmission, diesel, 202,951 miles. Excellent condition, \$20,000. Otis, OR. 503-375-2577

216 Vans



2009 GMC Savana 3500 WORK VAN with DURAMAX DIESEL. Allison Automatic. AC, PS, PW, CC. Divider wall. Near new Radial Tires. Spotlessly clean and runs and drives like new. Was used to transport documents. Freeway use only. One owner and work ready, \$6900. Located in Twin Falls ID. Call 208-613-0050

**222 Truck/ Auto Parts & Accessories**

**CUSTOM FABRICATION**  
We can meet your needs!  
**541-447-4555**  
**PRO-LINE**  
FABRICATION  
Prineville, OR 97229-2101

228 Tires & Wheels

8 tires and wheels to fit 9000 series John Deere. Size 900/50R46 90% thread! Chowchilla, CA. Call 209-246-3309

260 Boat Trailers



2002 Ziem Boat Trailer, 19' overall from tongue to rear, single axle, asking \$1250. Sandy, OR. Call Pepe: 503-544-3232; Call Pat: 503-407-9062

316 Trailers Misc.

3 Hopper bottom semi trailers for rent. Jefferson, OR. 503-932-0012

2001 Wabash 53' Dry Van trailer, four axle with one lift, 70% brakes and tires, roll up rear door, new rub rails and aluminum floor, only \$14,500. Pasco, WA. 509-531-0138

316 Trailers Misc.



2016 MTI Combo Trailer, snowmobile/ car hauler, 27' aluminum, v-nose with door, rear door and side doors. Nice interior package, asking \$17,500. Call Pepe: 503-544-3232; Call Pat: 503-407-9062

**Missing Something? Capital Press has what you're looking for and more!**

**Capital Press**  
1-800-882-6789  
CapitalPress.com

354 Auction Sales

**CENTRAL VALLEY AUCTION, INC.**  
Located at 7979 Lacey Blvd ~ Hanford, CA 93230

Next Auction  
**Sept 18, 2021**  
9:00 AM Sharp rain or shine!

MASK and SOCIAL DISTANCING REQUIRED  
Tractors, MF 135, White 8310, Loaders, Vehicles, Quads, Trailers, Rippers, Mowers, Disc, Harrows, Blades, Scrapers, Misc Tillage, Tires, Shelving, Metal, Fencing, Barrels, Granite Rocks & more.  
With more items arriving each day.  
Early registration beginning Sept 13th  
Remember - Check our website for updates, information and photos!  
PO Box 37, Hanford, CA 93232 - (559) 582-5837  
**www.centralvalleyauction.com**  
cva@centralvalleyauction.com  
Bond# BD 7900 653127 - Bankruptcy Court Bond # Bd 349112

**THIS AD SPACE could be yours!**  
**1-800-882-6789**  
or FAX 503-370-4383  
CapitalPress.com

**Sept. Consignment Auction**

**Online Only**  
Agricultural - Industrial - Construction - Surplus - Shop - More  
**Meridian Equipment Auction Co**  
5946 Guide Meridian,  
Bellingham, WA 98226

**ONLINE BIDDING OPEN**



Featuring- Industrial Surplus, Excavators, Pickups, Trucks, Tractors, Shop Tools, Attachments and Much More

**Meridianeq.hibid.com**  
Sale Conducted By Meridian Equipment  
5946 Guide Meridian  
Bellingham, WA 98226  
WAL#0002165  
**Bidding Closes SEPT 11, 2021**  
**MERIDIANEQ.COM 1-800-905-2141**  
\$216631-1

**BigIron AUCTIONS** WWW.BIGIRON.COM  
UNRESERVED | LIEN FREE | NO BUYER FEES

UNRESERVED ONLINE AUCTION  
WEDNESDAY, SEPTEMBER 22nd, 2021



**Stotz Equipment Bluffdale, UT**  
Kyle Schneider, Contact - 801-573-2850  
Debbie Sallee, Sales Rep - 402-239-4791

Items Pictured: 2016 John Deere S670 Combine; 2009 New Holland H8080 Swather w/ New Holland 770H Head; 2011 John Deere 8310RT Track Tractor

Also Listed: 2015 KUHN Merge Maxx 902 Hay Merger, 2000 John Deere 9750 STS Combine, 2000 John Deere 925R Rigid Header, 2011 John Deere 645C Forage Pickup Head, 2008 John Deere 645B Forage Pickup Head, and a 1998 Hesston 4900 Baler.

Visit **www.bigiron.com** for details and complete listings!  
Sell your equipment on BigIron.com - Call today!  
**1-800-937-3558**  
\$260893-1