

#### 890 Packing/ Processing Eq.

Used Super Sacks. Used once. Stovepipe Top: \$2. Opened Top: \$3. Salem, OR. 503-932-8598

#### 893 Logging Equip.

Logging Cedar? Cedar boughs wanted in October and November. Call Lars 503-348-5902



Paramount Ironworks has new brush rakes. We can help your land clearing/ clean up operations. The 8ft rake pictured will fit a variety of dozers and has 1"AR400 rippers, \$1995 and up. If you need something different, we offer custom fab & mobile welding. Let us know how we can help you. Eugene, OR. 541-321-3654

#### 899 Heavy & Indust. Eq.



CAT 308C Excavator/trailer combo. Quick disconnect, blade, 3 buckets and rake. John Deere controls, 24' tilt deck trailer, \$54,500. Happy Valley, OR. 503-710-8799



1988 CAT IT18B Wheel Loader, Quick Change, Auxiliary Hydraulics, 94" Bucket, Meter Reads 4771 Hours, Asking \$32,500. Sandy, OR. Call Pepe: 503-544-3232; Call Pat: 503-407-9062



2013 Case CX55B Mini Excavator, 3 Buckets, Blade, Rubber Tracks, 5340 Hours, Asking \$47,500. Sandy, OR. Call Pepe: 503-544-3232; Call Pat: 503-407-9062



NWTL Inc Heavy Haul & Trucking. Travis Dispatch 503-849-6867 Services: •Multi-Axle Lowboy •Heavy Haul •Heavy Equipment Recovery •Equipment Transport •Agriculture Equipment •Construction Equipment •Forestry Equipment •All Lower 48 States Hourly and Mileage Rates Available, Sandy, OR.

#### Capital Press Ag Weekly It works!



It's a small world! "A student in Vancouver, BC bought my Leyland 272 tractor to ship to his Dad in South Africa! His Dad already had one and wanted another, so he purchased the one I listed in Capital Press." Tony Wildermere Nut Grove Chilliwack, BC

#### Classified Advertising Works!

Capital Press CLASSIFIED PRODUCTS OF FOOD & FEED

Place your ad today! 800-882-6789 CapitalPress.com

### RIVERBROOK FARM • HAULING SERVICE Brooks, OR

**WE HAUL!**

- Building Supplies • Farm Equipment
- Construction Equipment • Heavy Equipment
- Granular Fertilizer • Grain/Wheat



888-393-1819 • www.riverbrooktrucking.com

#### 899 Heavy & Indust. Eq.



Dresser TD9H Dozer, 6 way, multi shank ripper, freshly painted and decaled. Brand new under carriage. Asking \$42,500. Sandy, OR. Call Pepe: 503-544-3232; Call Pat: 503-407-9062



Wanted: Mini Excavator, Kubota, Komatsu, etc. Rubber tracks with thumb preferred, up to 8,000lb. CASH & trailer ready ANYWHERE. Call Dan 360-304-1199

#### REPLACEMENT DECAL SETS

Construction, Forestry & Ag Equipment. Fast. Knowledgeable. Reliable Service. 215-536-5339 email: info@CustomServicesCompany.com Thousands of sets, Old & New, in our digital inventory. www.QuipCal.com



Diesel Air Compressors, most are towable, a few skids, hours range from 130 to 3000, prices range from \$7,500 to \$12,500. Many to choose from. Overtime Equipment, LLC. 21338 Hwy 30, Filer ID. 83328. 208-734-3434



CAT IT38G Front End Loader, 3126 CAT Diesel, 10,200 hours, 4-1 Three Yard Bucket, CAT Quick Attach, A/C, former municipal unit, \$49,500. Overtime Equipment LLC, 21338 Hwy 30, Filer ID, 83328; 208-734-3434

#### NEW HOLLAND CONSTRUCTION



2019 New Holland C227 EH Track Loader: \$43,900. Brim Tractor, Lynden, WA. Call/ text 360-815-4668



2012 Xtreme XR1255 Telehandler Lift: Diesel, \$78,900. Brim Tractor, Lynden, WA. Call/ text 360-815-4668

#### NEW HOLLAND CONSTRUCTION



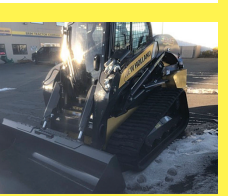
2019 New Holland C237 EH HF Track Skid Steer: Demo, 450 engine hours, \$59,900. Lynden, WA. Call/ text 360-815-4668



NEW 2019 BrushHound 30EXHD, \$7900. Brim Tractor, Salem, OR. Call/ Text 503-508-1103

**Buying or Selling** Capital Press is here to help you! 1-800-882-6789 or FAX 503-370-4383 CapitalPress.com

#### 899 Heavy & Indust. Eq.



NEW 2019 New Holland C245 EH QC HF, 17.3 hours, \$59,900 Brim Tractor, Chehalis, WA. Call/ text 360-510-8100



2004 Deere 270C LC Excavator, Hydraulic Coupler, 48" Dig Bucket, 9627 Hours, Asking \$34,500. Sandy, OR. Call Pepe: 503-544-3232; Call Pat: 503-407-9062

D2 CAT tractor blades with push arms, no hydraulics. Make offer. Gales Creek, OR. 503-357-9775

Wrecking D7, good tracks and mowers, other parts. Dayton, OR. 503-931-6966

3-1/2 yard Bucket for 950 CAT loader. Good Condition, \$2000. Hood for Freightliner FLD. Good condition, \$700. Topsoil rock screen, \$7000. Merrill, OR. 541-281-3941



2000 Ingersol Rand 185 CFM air compressor with 4 KW generator. Skid mount. John Deere Diesel 50 Ft. of hose. Very clean well operating machine from a large California County, \$7900. Located in Twin Falls ID. Call 208-613-0050

Jaw Crusher Plant 32"x42". With a separate 32"x42" apron feeder. Both are portable with heavy duty hydraulic legs. Good tires, \$150,000. Oregon. 541-954-4808



Bomag 60" vibratory pad foot compactor with blade, \$16,500. Salem, OR. 503-362-3055



Ingersoll Rand 72" SMOOTH DRUM vibratory compactor, \$15,500. Salem, OR. 503-362-3055



1995 Case 9050B Excavator, Hydraulic Thumb, Hydraulic Quick Connect, 30" Dig Bucket, Mitsubishi Diesel, Asking \$39,500. Sandy, OR. Call Pepe: 503-544-3232; Call Pat: 503-407-9062



Bomag BW122B Vibratory Roller, Hydrostatic, Diesel, 48" Smooth Drum, Asking \$8,500. Sandy, OR. Call Pepe: 503-544-3232; Call Pat: 503-407-9062

There Are Always Great Deals In Capital Press Classifieds. Call Now And Add Yours! 1-800-882-6789

CASE INDUSTRIAL PARTS We sell genuine, after market, and used CASE parts at discount prices nationwide. Call For Free Catalog.

CENTRAL EQUIPMENT AFTER MARKET & USED PARTS Medford, OR (888) 593-8749

#### 902 Farm Equip. Parts

**Capital Press CLASSIFIEDS** 1-800-882-6789 CapitalPress.com

**COUNTRY VALUES. BIG CITY RESULTS.**

Ag in the west news delivered in print or online.



- Newspaper
- E-editions
- E-newsletters
- Mobile
- Website

Subscribe Today. 1-800-781-3214

**Capital Press** CLASSIFIED PRODUCTS OF FOOD & FEED 1-800-882-6789 CapitalPress.com

**Nyssa Tractor & Implement**

Our yard has 5 miles of road, the rest is farm machinery & parts. [www.nyssatractor.com](http://www.nyssatractor.com) Toll Free (833) 372-4020 Nyssa, OR

#### BIG TRACTOR PARTS, INC.

~ GEARED FOR THE FUTURE ~

#### STEIGER TRACTOR SPECIALIST

1. We are your source for new & used Steiger drivetrain parts Series 1-9300 Series.
2. We rebuild Spicer manual transmissions, Fugi power shift transmissions, dropboxes & axle with ONE YEAR WARRANTY!
3. We now rebuild computer control boxes for Steiger tractors 1982-1999.

800-982-1769 [www.bigtractorparts.com](http://www.bigtractorparts.com)

#### 907 Nursery Equip. & Supplies

#### 907 Nursery Equip. & Supplies

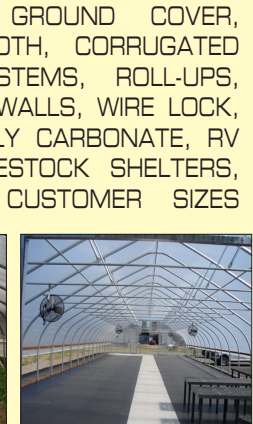
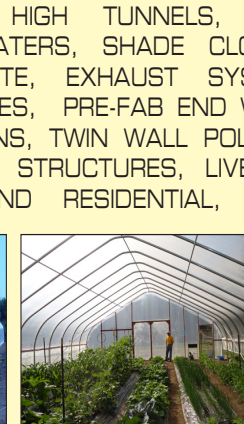
#### 907 Nursery Equip. & Supplies

503-678-2700 **Oregon Valley GREENHOUSES**

**Oregon Valley GREENHOUSES**

info@ovg.com | www.ovg.com  
20357 Hwy 99 E | Aurora, OR 97002

GREENHOUSES, HIGH TUNNELS, GROUND COVER, POLY FILM, HEATERS, SHADE CLOTH, CORRUGATED POLY CARBONATE, EXHAUST SYSTEMS, ROLL-UPS, CODE STRUCTURES, PRE-FAB END WALLS, WIRE LOCK, CIRCULATING FANS, TWIN WALL POLY CARBONATE, RV COVERS, SHADE STRUCTURES, LIVESTOCK SHELTERS, COMMERCIAL AND RESIDENTIAL, CUSTOMER SIZES



#### 905 Antique Farm Eq. & Parts



1947 John Deere B. (Barn find). Great shape, \$1450. Nampa, ID. Call Chuck at 208-870-5787



1945 John Deere. Electric start. PTO. \$3250. Nampa, ID. Call Chuck at 208-870-5787



Empire 13/4HP, Novo 4HP. Assembled but need restoration, \$150,210. Gaston, OR. 480-399-9620



1957 Ferguson 35: two owners, runs great, good tires, PTO, \$3000 OBO. Grand Mound, WA. Call 360-481-0138



International Harvester Implements. Plows, Mower, Seeder, Belly Blades and others. \$450.00 takes it all. Nampa, ID. Call Chuck at 208-870-5787



Antique Engine Collection: Maytag, Briggs, and others. \$350.00/ offer. Nampa, ID. Call 208-466-1796

A picture is worth a 1,000 words



Add a full color photo to your print and online ad.

**Capital Press** CLASSIFIED PRODUCTS OF FOOD & FEED 800-882-6789 CapitalPress.com

#### 907 Nursery Equip. & Supplies

**USED NURSERY CONTAINERS:** Used, but reusable nursery containers. All sizes. Inventory changes daily. Call for current availability and prices. Sawyer Farms, Scio OR. 503-769-3417, juddsfarm@wvi.com (also wanted: used containers)

**Used Shrub Pots.** Hundreds to choose from. Sizes No. 1 to No. 10 and some larger sizes. Lebanon, OR. 541-752-8800

**FRESH SAWDUST:** Consistently fair pricing. 9 Unit Loads Now Available Forest-Grove, OR. For pricing call 503-849-0216

#### 911 Hay Equip.



John Deere 348 Baler: like new, very little use, loaded, \$18,500. Estacada, OR. 503-313-2681, 503-631-7029



Hesston 1459 Mower Conditioner. Close to new condition, \$8250. Estacada, OR. 503-313-2681, 503-631-7029

#1 Balewagons: Buy, Sell, New Holland 2&3 wide self-propelled, pull-type models, parts, tires, manuals. Caldwell, ID. 208-880-2889 www.balewagon.com

**New And Used Parts:** for all models New Holland bale wagons. Largest inventory in North America. Sod Busters Sales, Polson, MT. 877-735-2108 or 406-883-2118

**Large Supply of Rebuilt New Holland Bale Wagons:** Also buying New Holland bale wagons. Sod Busters Sales, Polson, MT. 406-883-2118



Freeman 370 Hydro baler, had it through the shop last winter, all new rails in the chamber, plunger pulled, new bearings on plunger, new needles and needle yoke, new knottor shaft, knottor fan and hydraulic cooling fan both work. Just got done using it in 1st Cutting Timothy and 2nd Cutting Alfalfa, worked flawlessly. \$18,500. Located in Ellensburg, WA. 509-929-5929

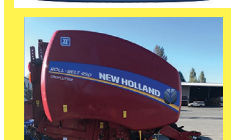


2015 Massey Ferguson 2270XD. Two available around 47,000 bales, \$79,000 each. Financing available. Albany, OR 503-510-7779



2015 New Holland RB450 Roto Cut. PRICE REDUCED to \$39,900. Brim Tractor, Lynden, WA. Call/ text 360-815-4668

#### NEW HOLLAND AGRICULTURE



**HAY Equipment Sale!** NEW 2020 New Holland RB450 Roto Cut. PRICE REDUCED to \$39,900. Brim Tractor, Lynden, WA. Call/ text 360-815-4668

IF YOU HAVE A BEEF - sell it in next week's Capital Press!

#### 911 Hay Equip.

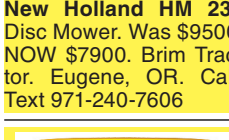
#### 911 Hay Equip.



**New Holland BC 5070 Baler:** WAS \$31,900. NOW: \$26,900. Brim Tractor, Eugene, OR. Call/ text 971-240-7606



**New Holland HM 235 Disc Mower.** Was \$9500. NOW \$7900. Brim Tractor, Eugene, OR. Call/ Text 971-240-7606



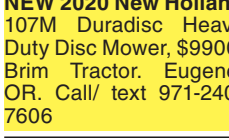
**New Holland 108M Mower.** Was \$12,900. NOW \$9900. Brim Tractor, Lynden, WA. Call/ text 360-815-4668



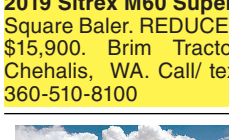
**New 2020 New Holland 107M Duradis Heavy Duty Disc Mower,** \$9900. Brim Tractor, Eugene, OR. Call/ text 971-240-7606



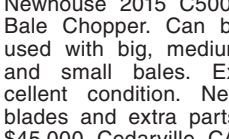
**2019 Sitrex M60 Super:: Square Baler. REDUCED \$15,900.** Brim Tractor, Chehalis, WA. Call/ text 360-510-8100



Newhouse 2015 C5000 Bale Chopper. Can be used with big, medium and small bales. Excellent condition. New blades and extra parts, \$45,000. Cedarville, CA. 916-597-5303



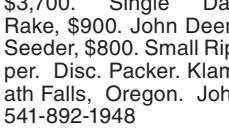
2018 John Deere 5100GN: orchard cab, 2500 hours, warranty to 4000 hours. Financing available, \$45,000. Albany, OR. 503-510-7779



**Propane Cannons** (4) ZOG Mark 4 propane cannons, like new. Made in Holland. \$210/ each or \$800/ all. Propane tanks additional \$20/ each. Salem, OR. 503-798-3993



Weiss McNair 824 Hazelnut Harvester with pre-feeder attachment, large fan with trailer, \$15,000. Gales Creek, OR. 503-357-9775



Weiss McNair Sweeper: with Deutz diesel motor, all tines header, \$15,000. Gales Creek, OR. 503-378-9179

#### 917 Orchard/ Vineyard Equip.



**Flory 58 Series Diesel Sweepers.** Call for Price

#### NEW EQUIPMENT

- Flory 58 Series Diesel Sweepers..... Call for Price
- Flory 490 Hazelnut Harvester ..... Call for Price
- Air-O-Fan Sprayers.. Call for Configuration & Pricing
- Riteway V Scrapers w/wheels & roller, 10' offset option available..... Call for Price
- Guardian Ag & Prune Rite 20' & 25' towers ..... Your Choice - Call for Price
- 324C Bump Cart, 4 tote w/chain..... Call for Price
- Hy. Pruning Saw w/hoses & couplers..... \$1,600
- Jack Rabbit Equipment Available
- Call for Silo Bins & Dryer Equipment

#### USED EQUIPMENT

- Flory 76" Tine Bar Head, like new.....\$8,500
- Rammacher 76" Diesel Sweeper.....\$9,500
- 3000 Tree Guards..... .30 Each
- 7' Vrismo mighty max..... \$1,800
- Kuhn EL 35 130 rototiller..... \$1,250
- Southeast imco angle blade scraper..... \$300

Call us at (503)538-7739 [www.chehalemvalleyorchardequipment.com](http://www.chehalemvalleyorchardequipment.com)

Or Come See Us At 24175 Dayton Ave. Newberg, Oregon 97132