



**Access Capital Press any where, any way you want it.**

**Print**  
Capital Press AG Weekly is written for the Northwest region's Ag Community

**E-edition**  
An exact pixel copy of Capital Press. Easy to use - easy to share articles.

**E-mail Newsletters**  
The latest top ag stories weekly.

**Website**  
CapitalPress.com news and ads updated 5 days a week.



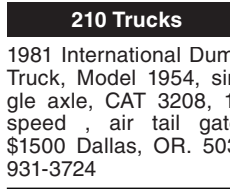
**210 Trucks**  
1988 Kenworth T800 with 21ft. roller deck dump bed. NTC Cummins Diesel. 13 speed. Jake, AC, PS. 236K MILES. 70% 11/22.5 radials. Very clean and well maintained original owner truck that is rust free and work ready, \$15,900. Located in Twin Falls ID. Call 208-613-0050



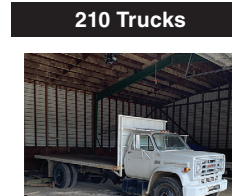
**210 Trucks**  
2001 Freightliner Transfer Dump Truck. 15 yard main with HiLift airgates on truck and trailer. CAT C12 Diesel. 410HP. 13 speed. Jake Brake, CC, AC, PW. 80% 11/22.5 radials on alloy wheels. This one owner truck is spotlessly clean and has been well maintained. NO RUST, NO DAMAGE. Runs drives and operates like new, \$25,900. Located in Twin Falls ID. Call 208-613-0050



**210 Trucks**  
1999 IHC 2674 tandem dump truck. 15 yard. 105,073 ACTUAL MILES. 5000 hours. Cummins N-14 Diesel. Fuller 13 speed. Jake. PS, AC, CC, PW. Rear locker differentials. Hendrickson spring rears. 18,000 Lb. front axle. 70% 22.5 radials. One owner former State truck that has had excellent fleet maintenance, is clean and runs and operates like new. \$34,000. Located in Twin Falls ID. Call 208-613-0050



**210 Trucks**  
1981 International Dump Truck, Model 1954, single axle, CAT 3208, 10 speed, air tail gate, \$1500 Dallas, OR. 503-931-3724



**210 Trucks**  
1974 GMC Truck: 6000 Series, 18ft steel bed and hoist, \$3900. Salem, OR. 503-990-1219



**210 Trucks**  
1998 FRIEHTLINER FL80 Dump Truck, 37k Miles, 250HP 3126, automatic, 15' Bed, A/C, 60% Rubber, Plumbed for Trailer, Former Municipal Truck \$37,500. Overtime Equipment, LLC. 21338 Hwy 30 Filer ID. 83328, 208-734-3434



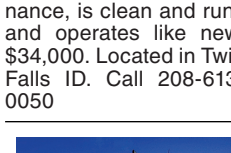
**210 Trucks**  
1999 IHC 2674 Tandem axle dump truck. 15 yard bed. Cummins N-14 Diesel 13 speed transmission. AC, PS, CC, PW, Jake brake. Side Lock differentials. 18K. Front Axle. Hendrickson spring rears. 138,000 ACTUAL MILES and 5900 HOURS. Former State DOT Truck. Runs, drives, and operates like new. Well maintained. Records available, \$24,900. Located in Twin Falls ID. Call 208-613-0050



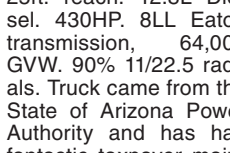
**210 Trucks**  
2001 IHC 2574 tandem axle cab and chassis. N-14 Cummins, 13 speed. 112,000 ACTUAL MILES. Jake, PS, AC, PS. Traction lock. 164" cab to trunnion. Double frame full length. Hendrickson spring rears. 64,000 GVW. Near new 22.5 Radial tires. Former California DOT truck that has had excellent maintenance. Runs, drives and operates like new. NO RUST! \$26,900. Located in Twin Falls ID. Call 208-613-0050



**210 Trucks**  
1996 Ford LN7000 with mechanic's bed, 6500 LB. All hydraulic Auto Crane, 160 CFM Sullair Rotary screw air compressor, PTO Drive and Honda 3500 Watt Generator. Cummins 5.9 Diesel. Allison Auto transmission. PS, AC. 80,000 ACTUAL MILES. One owner truck from a large Southern California County. In near new condition, \$15,900. Located in Twin Falls ID. Call 208-613-0050



**210 Trucks**  
1982 Ford LN9000, Cummins, 13 speed, 21ft silage and manure box, \$7000. Buhl, ID. 208-280-6595



**210 Trucks**  
2007 Sterling 9500 with Grizzly 267C LOG LOADER. 2200 HOURS. 26,700Lb. lift capacity. 360 non continuous rotation. 44" grapple with 25ft. reach. 12.8L Diesel. 430HP. 8LL Eaton transmission, 64,000 GVW. 90% 11/22.5 radials. Truck came from the State of Arizona Power Authority and has had fantastic taxpayer maintenance. Truck looks, operates and drives like a new one, \$49,000. Located in Twin Falls ID. Call 208-613-0050.

**CLASS 8 TRUCKS 509-534-9088**



**1982 International \$1954 18' bed and hoist, wood racks with swing tailgate, steel floor, roll tarp.....\$14,900**



**2006 Kenworth T800 Cat C15, 10-spd., 3.55 ratio, A/C.....\$37,900**



**2007 International 9200 CAT C13, 410 Hp, 10 spd., auto shift, rear diff. lock, A/C, engine overhaul history.....\$27,900**



**1997 Freightliner FLD120, Detroit S60 12.7, 13-spd., walking beam, drop axle, double frame.....\$39,900**



**1997 International 2574, Cummins, Jakes, 15-spd., Walking beam, 20K front axle, double frame, low miles, great feed lot truck.....CALL**



**A-Trains available FOR RENTAL!**  
Daily, Weekly, Monthly Rates. Reserve yours today!  
**Call Scott**  
\$259956.1



**1976 International 1600 10 wheeler, 20ft steel bed with hoist, 478 gas engine, very good condition, \$12,500 OBO. Toppenish, WA. 509-728-5000**



**1976 Mack RS600L Water Truck: On site Truck. Front, Rear and Side Sprayers. Hose Reel, 4000 Gallons, Hendrickson Spring, Asking \$13,500. Sandy, OR. Call Pepe: 503-544-3232; Call Pat: 503-407-9062**



**1994 GMC TOPKICK with ALTEC AM855 62 FT. WH. manlift. 40,000 ACTUAL MILES. CAT 3126 DIESEL. Allison Automatic. PS, AC. Former city truck from the Los Angeles area. Well maintained and clean as new and operates, runs and drives like a new truck, \$19,900. Located in Twin Falls ID. Call 208-613-0050**

**1982 Ford with CAT engine, 23ft bed and hoist with tag axle, \$3900. 1977 Cabover Freightliner with 20ft steel bed and steel racks, automatic tailgate, \$9500. 20ft steel bed rack and hydraulic tailgate, \$1000. 6" hydraulic scissors hoist, \$700. (2) 6"x72" hydraulic cylinder, \$800. Dearborn Loader for Ford or Ferguson tractor, \$750. Turner, OR. 503-930-1706**



**2002 Peterbilt 357 Cab & Chassis, 400HP ISM Cummins, 10 speed, double frame, 59,000GVW, 172" cab to trunnion, 22' total, wet kit, \$49,500 Overtime Equipment LLC, 21338 Hwy 30, Filer ID, 83328; 208-734-3434**



**1996 IHC 4900 15ft. flat-bed truck with removable 4 ft. stake sides and 3000 Lb. liftgate. T444E, 7.3 L. Turbo Diesel with 5 and 2 trans. 103,000 ACTUAL MILES. Brand new radial tires. 26,000 GVW. NO CDL. One owner truck from Cal Fire. Clean, well maintained and operates like new. \$14,900. Located in Twin Falls ID. Call 208-613-0050**



**1994 GMC TopKick Single Axle dump truck. 25800GVW. CAT 3116 Diesel Allison Automatic. PS, cc. 5 yard bed. Like new radials. 143,000 ACTUAL MILES. Absolutely immaculate rust free truck from the California DOT. Looks runs and drives like it's brand new. \$19,900. Located in Twin Falls ID. Call 208-613-0050**

**Buying or Selling Capital Press is here to help you!**  
1-800-882-6789  
or FAX 503-370-4383  
CapitalPress.com

**R & G MACHINING AND ENGINE PARTS COMPLETE DIESEL MACHINE SHOP AND TRUCK REPAIR**  
MULINO, OREGON • SHOP: 503-829-6038 • NATIONWIDE: 1-800-823-6038  
We Absolutely, Positively Have The Best Remanufactured Engines Available Anywhere!  
Huge Inventory • Expert Technical Assistance

**ENGINES INSTALLED PRICING**  
Incidentals extra, Exchange 100,000 mile warranty when we install! Depending on applications.

GM 6.2 - 6.5T, installed.....	\$6995
Ford 6.4 P/S, installed.....	\$12,750
Ford 94-03 7.3 P/S, installed.....	\$7,900
Cummins 88-02 5.9, installed.....	\$8,400
Cummins 03 & Up, 5.9 C/R, installed.....	\$9,450
Cummins 6.7, installed.....	\$10,250

**REBUILT DIESEL L/B ENGINES**

<b>CUMMINS</b>	<b>PERKINS &amp; ISUZU</b>
3.9-4BT.....\$4,150	Starting at.....\$5,995
5.9 '88-'02.....\$4,250	<b>MITSUBISHI &amp; NISSAN</b>
5.9 '03 & up.....\$4,650	Starting at.....\$5,995
6.7 C/R.....\$4,950	<b>YANMAR &amp; KUBOTA</b>
<b>FORD</b>	Starting at.....\$4,495
6.0 P/S.....\$5,345	<b>BOBCAT &amp; SHIBAURA</b>
6.4 P/S.....\$6,045	Starting at.....\$3,995
6.7 P/S.....\$7,150	<b>DOOSAN &amp; TAKEUCHI</b>
6.9-7.3 IDI.....\$4,650	Starting at.....\$5,995
7.3 P/S.....\$4,650	<b>MERCEDES</b>
<b>GM</b>	Starting at.....\$8,995
6.6 Duramax.....\$6,050	<b>HINO &amp; IVECO</b>
6.2-6.5.....\$4,395	Starting at.....\$5,995
<b>JOHN DEERE &amp; IH</b>	Starting at.....\$5,995
Starting at.....\$5,995	<b>KOBELCO, KOMATSU, HITACHI</b>
<b>KOBELCO, KOMATSU, HITACHI</b>	<b>CATERPILLAR &amp; HYUNDAI</b>
Starting at.....\$5,995	Starting at.....\$5,995

• We grind and weld crankshafts and camshafts  
• We weld blocks & cylinder heads  
• Exchange connecting rods or connecting rod kits  
• Diesel or Gas engine kits  
• Cylinder head or block O-ringing  
**All Years & Models: Turbos, Injectors, High Pressure Oil Pumps, Fuel Injection Pumps, Oil Coolers, Computers - Ford, GM Chrysler**

**We have a large inventory of rebuilt or remanufactured cylinder heads, connecting rods, crankshafts, and blocks on a exchange basis for diesel and gas engines.**  
Call on other gas or diesel engines. We are a major rebuilders on all diesel brands. All work done in house!



**CUMMINS 5.9 MAGNUM**

**IN BUSINESS SINCE 1975.**

**OVER 250 ENGINES & 450 CYLINDER HEADS IN STOCK!**  
We have a complete line of import diesels and obsolete diesels for your mini excavators or skidsteers. We work and repair all brands!  
**NEED ENGINE PARTS, GAS OR DIESEL - CHECK IT OUT:**  
WWW.EBAY.COM/STR/GRUMPYSPERFORMANCECENTER  
GRUMPYSPERFORMANCE@GMAIL.COM

**Capital Press Ag Weekly It works!**

**We cover all your crop needs!**  
Capital Press is an important part of my information toolbox. With vegetable seed crops spread out from Junction City to Basin City, we need accurate and timely information about current events and pending legislation that affects our business. The Capital Press delivers a sledgehammer's worth of news every week!

**Capital Press**  
EMPOWERING PRODUCERS OF FOOD & FIBER  
800-882-6789 • CapitalPress.com

**WANTED**  
We've Moved to Salem, OR!  
**"Fairly Honest Neil"**  
**I BUY TRUCKS**  
Specializing in Running or NOT!  
In The Pacific Northwest  
503-521-6935  
HAGERMAN INC  
11000 Portland NE, Salem, OR  
neil@hagermanparts.com

**KENWORTH T800 4-AXLE CHASSIS**  
6 TRUCKS @ \$80,000

Cummins ISX engines, 18-spd. trans., single spd. Eaton rear-ends 4:10 or 4:11 gears w/locker, HENDRICKSON HAUL-MAX WALKING BEAM SUSP.

#33 DR363687 2013, D46-170HP rears, 262" WB, 485hp.....	\$80,000
#39 CJ317333 2012, D46-170HP rears, 262" WB, 485hp.....	\$80,000
#42 CJ317336 2012, D46-170HP rears, 271" WB, 485hp.....	\$80,000
#48 DR363689 2013, D46-170HP rears, 262" WB, 485hp.....	\$80,000
#52 DR363690 2012, D46-170HP rears, 262" WB, 485hp.....	\$80,000
#78 CJ317337 2012, D46-170HP rears, 272" WB, 485hp.....	\$80,000
#19 CJ217332 2012, D46-170HP rears, 262" WB, 485hp.....	SOLD
#74 DR363688 2013, D46-170HP rears, 262" WB, 485hp.....	SOLD
#76 CJ317335 2012, D46-170HP rears, 262" WB, 485hp.....	SOLD
#94 R066820 2004, DSP-463P rears, 270" WB, 475hp.....	SOLD

**CLEAN AND IN EXCELLENT SHAPE! MAINTENANCE RECORDS - REGULAR OIL SAMPLES**

**Thomas H. IRELAND INCORPORATED**  
More info: www.irelandtrucking.com  
Call Charles Ireland 541-863-1501  
Myrtle Creek, OR



**1991 GMC TopKick with 15,000lb. crane. 34ft. reach. 17,000 ACTUAL MILES. 3116 CAT Diesel and 5&2 transmission. One owner County truck from Southern California that has been well maintained. Very clean and runs, operates and drives like new. MILES ARE CORRECT! \$16,900. Located in Twin Falls ID. \$16,900. Call 208-613-0050.**



**2010 IHC WorkStar 7600 tandem axle with 24ft. reefer van and SUBZERO ThermoKing Diesel reefer unit. Roll up rear door with 6600 LB Lift-Gate. Cummins ISM Diesel 410HP. 10 Speed. Fuller Transmission. PS, AC, CC, PW, Jake. Locker rears. Near new 11/22.5 radials. One owner unit from the California Dept. of Education. This truck is in near new condition throughout. Beautiful and work ready, \$44,900. Located in Twin Falls ID. Call 208-613-0050**



**2009 International 7600, 370hp ISM Cummins, Allison 4500RDS Automatic, 34k Miles, 1928 PTOhrs, 58k GVW, Altec AC12-70B 12 Ton 70' Crane, Wireless Remote, Former Municipal Unit \$89,500 Overtime Equipment, LLC. 21338 Hwy 30 Filer ID. 83328, 208-734-3434**

**1-800-882-6789 CapitalPress.com**

**POWER FLEET & COMMERCIAL SALES MEDIUM DUTY DEALER**

**Jim Church 503-910-7784 jimc@powerautogroup.com**  
**Delana Johnson 503-769-7100 delana@powerautogroup.com**  
**Brian Heinrich 503-504-3629 brian@powerautogroup.com**  
**Ryan Church 503-877-7102 ryan@powerautogroup.com**

**Silverado Med Duty Trucks Ranging from 4500-6500**  
Call for your business preferred price

**2020 Chevy 5500XD LCF Diesel**  
Call for your business preferred price

**CHEVROLET BUSINESS ELITE**  
**WWW.POWERAUTOGROUP.COM**  
**503-769-7100**  
\$242606-1

**LOVELL Truck Sales 50th ANNIVERSARY**

**2001 Volvo 3-axle day cab, Cummins N-14, Fuller 10-spd, PS, A/C, cruise, 415k miles.....\$9,500**

**1994 Freightliner 4-axle transfer dump, C-12 CAT, 8 LL trans, Chambers susp., 46k rears, 14,600 front, 4-axle transfer trailer, call for more details.....\$29,500**

**2006 International 4300 24' flat-bed, DT-466, Allison AC10 trans, PS, A/C, 24' bed with tuckaway liftgate, 187k miles.....\$19,500**

**Coming this Week!!**  
**2005 Kenworth T-800 4-axle day cab, Cat C-15, Fuller 10-spd., PS, A/C, cruise, air slide 5th wheel, dump valve.....Call for Details**  
\$246663-1

**1996 Wabash 45' reefer trailer, Thermo King SB3 SR reefer, rail gate \$5,500**  
Also, 2001 Great Dane 48' reefer trailer. Carrier Phoenix reefer (non-working), nice rail gate \$5,500

**1-800-451-0012 (503) 266-5886 FAX (503) 266-6903**  
**LOVELLTRUCKSALES.COM**  
LovellTruck@canby.com  
680 SW 1st Ave (Hwy 99 E) Canby, OR

**Pro Truck**  
**(253) 863-8782**  
Cell 206-510-4780  
sales@pro-truck.com



**2013 Volvo VNL tandem axle day cab truck tractor, Volvo D13 12.8L/475 Hp, auto. trans, 175" WB, OnBoard Diagnostics (ECM).....\$32,000**



**2011 Freightliner tandem axle tractor, Detroit DD13-12.8L/500 Hp, 10-spd., 180" WB.....\$19,500**



**2005 Volvo VLN tandem axle day cab tractor truck, Cummins ISX 400 Hp, Eaton Fuller 10-spd., 170" WB, OnBoard Diagnostics (425,827 ECM miles).....\$15,000**



**2001 Great Dane 48' 2-axle roll top trailer 51' deck height, 107" IS height, 99" IS width.....\$14,500**

**www.pro-truck.com**  
5260280-1

**211 Pickups**



**1999 Ford XLT F350: 7.3 power stroke diesel, 6 speed standard transmission with flatbed, \$16,500 FIRM. (Pickup bed available). Juntura, OR. 541-604-5187**



**2000 Ford F-350 Crew cab, longbed, canopy, 4x4, manual transmission, diesel, 202,951 miles. Excellent condition, \$20,000. Otis, OR. 503-375-2577**

**216 Vans**



**2009 GMC Savana 3500 WORK VAN with DURAMAX DIESEL. Allison Automatic. AC, PS, PW, CC. Divider wall. Near new Radial Tires. Spotlessly clean and runs and drives like new. Was used to transport documents. Freeway use only. One owner and work ready, \$6900. Located in Twin Falls ID. Call 208-613-0050**