

525 Commercial Property

DAYVILLE MERCANTILE! Groceries, Feed, Liquor, Gifts. Your Opportunity to Live and Work in the country, \$599,000. Contract assumable. RMLS #20312089 Duke Warner Realty, Dayville, OR. 541-987-2363 www.dukewarnerrealtyofeastoregon.com ddwr@ortelco.net

Processing Plant, Warehouse, Offices. Property includes 5.14 Acres and 77,000sqft of buildings and office space. Hot pack processing line, warehouse, and offices. North of Salem, OR. Close to I-5. \$3,000,000 Email: farmforlease18@gmail.com

A picture is worth a 1,000 words

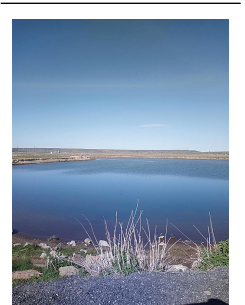


Add a full color photo to your print and online ads today by calling

800-882-6789
Capital Press
CapitalPress.com

540 Recreational Property

Amazing opportunity to own 235 timbered acres on Willapa Bay, WA. Own your own recreational oceanfront paradise with breathtaking bay and ocean views backdropped by mountain ranges. Abundant wildlife include elk and deer, \$2,499,900. Call Debra Cromer 509-990-8733. Realty Executives Grant Co



83 Acres 7 miles West of Burns, OR. 1884 water right on entire parcel. With 30 acres of Native Meadows. Water supplied from numerous year round ground springs & 5.5 acre spring fed pond stocked with bass & blue gill. Best duck & goose hunting area in Harney County. Year round gravel road to property. Excellent homesite overlooking creek. There is a domestic well & pumphouse. Plus 2 small outbuildings on property. Broker owned, \$360,000. Possible Owner Financing. Call for more details. 541-589-2068

540 Recreational Property

PUBLISHER'S NOTICE All real estate advertising in this newspaper is subject to the Fair Housing Act which makes it illegal to advertise "any preference, limitation or discrimination based on race, color, religion, sex, handicap, familial status or national origin, or any intention to make any such preference, limitation or discrimination." Familial status includes children under the age of 18 living with parents or legal custodians, pregnant women and people securing custody of children under 18. This newspaper will not knowingly accept any advertising for real estate which is in violation of the law. Our readers are hereby informed that all dwellings advertised in this newspaper are available on an equal opportunity basis. To complain of discrimination call HUD toll-free at 1-800-669-9777. The toll-free number for the hearing impaired is 1-800-927-9275.



5219450-1

546 Rentals, Leases

WANTED
Bird Hunting Leases 2021 Season
Pheasant • Duck • Quail
Eastern Oregon, Southwest Idaho.
Call Brad 208-863-2705; Email: bbower@eaglefp.net

546 Rentals, Leases

FOR LEASE Vegetable Processing Facility and 2 Storage Buildings Hermiston Oregon. Processing Facility approximately 58,000 sq. ft. with office, lunch room, receiving area, packing room, two large cold rooms, shop/parts room, staging room, shipping/ loading dock for three (3) trucks, scales); 2 Storage Facilities (30,000 sq. ft. facility with dehumidification; 60,000 sq. ft. facility with computerized refrigeration and dehumidifiers), private railroad spurs for transportation, water rights (well), septic, electricity, water lagoon for waste water. Will possibly rent processing facility and storage facilities separately. Contact Larry Blunck at 503-656-1654 or larry@bluncklaw.com

Warehouse Space for Rent: 40,000sqft clear span, scale on site, \$8000/ month. HWY 26. Mile post 57. North-Plains, OR. 503-647-2281

5219450-1

CAPITAL PRESS CLASSIFIEDS GET RESULTS!

561 Ranches

for RANCHES & FARMS call
Crater Lake Realty, Inc.
Linda L. Long, Broker
541-891-5562
Chiloquin, OR
linda@craterlakerealtyinc.com • craterlakerealtyinc.com

Print and online Ag News for ranchers, farmers, vintners, nursery people and more!

ANYTIME ANYWHERE
Capital Press
1-800-882-6789
CapitalPress.com

561 Ranches

Print and online Ag News for ranchers, farmers, vintners, nursery people and more!

ANYTIME ANYWHERE
Capital Press
1-800-882-6789
CapitalPress.com

ANYTIME ANYWHERE
Capital Press
1-800-882-6789
CapitalPress.com

561 Ranches



BIG SPLASH!
SMALL INVESTMENT. Advertise today.

Capital Press
1-800-882-6789
CapitalPress.com

561 Ranches

KNIFE LAND
Timbered Land - OR
Timbered land parcels in NE Oregon, ranging from 795± to 9,772± acres, all with great hunting and recreation. \$1,140,000 - \$9,319,000
Weiser Ranch - ID - SOLD 2,103± acres. \$7,700,000
Trail Creek Meadows - ID SALE PENDING 1,100± acres with meadows, forests, and creeks, scenic views & abundant wildlife. 1+ hour from Boise. \$4,990,000
Sun Valley Ranch - ID SALE PENDING 149± acres with ponds, home, barn, arena, and irrigated land. \$2,950,000
Little Willow Ranch - SOLD 2,916± acres. \$4,200,000
We have buyers looking. Call today to list your property!
208.345.3163 knipeland.com

CLASSIFIED LINE ADS GET RESULTS
1-800-882-6789
CapitalPress.com

IDAHO RANCHES & FARMS

WE SPECIALIZE IN TAX-DEFERRED EXCHANGES

Robert Jones Realty
ALC
ACCREDITED LAND CONSULTANT
Bob Jones, Broker 208-308-6060
Mark Jones, Assoc. Broker 208-308-3030
208-733-0404
1766 Addison Avenue E, Twin Falls, ID 83301
www.RJREALTY.com 5256015-1

More buyers are searching web listings.

Call us today!
Our Sales Reps will help you put your ad online today.

Capital Press
EMPOWERING PRODUCERS OF FOOD & FIBER
800-882-6789
CapitalPress.com

546 Rentals, Leases

WANTED
Bird Hunting Leases 2021 Season
Pheasant • Duck • Quail
Eastern Oregon, Southwest Idaho.
Call Brad 208-863-2705; Email: bbower@eaglefp.net

BIG HORN CANYON

FALL, SPRING & GENERALLY WINTER PASTURE, YEAR ROUND IN THE OLD DAYS - ABOUT 5,900 DEEDED, 640 STATE, 240 BLM - AVAILABLE NOW! - HAS NOT BEEN GRAZED 2021 - \$20,700 ANNUAL CRP - LIVE WATER YEAR LONG - POWER AND CELL ACCESS AT PROPOSED HQ'S - LANDLOCKED WITH NO PUBLIC ACCESS - DEER & TURKEY - FISHING, (COLUMBIA RIVER ONLY MINUTES AWAY) - 80+/- PERCENT NEWER METAL FENCING - RATED AT APPROXIMATELY 1,500 ANNUAL AUMS WITH INCREASE POTENTIAL TO USE AS YOU SEE FIT - ROOSEVELT, WA - \$2,800,000
See @: agrilandsrealestate.com

Jack Horton (Owner Interest) 208-830-9210
Rae H. Anderson 208-761-9553
AGRILANDS REAL ESTATE
Medical Springs, OR
agrilandsrealestate.com 5258742-1

720 ACRE TUCANNON RIVER RANCH

• 130 Acre WATER RIGHT
• Irrigated pasture & cropland with pivot
• 1 mile of private river frontage and 2 ponds
• Excellent Steelhead fishing, upland bird & deer hunting
• Custom Santa Fe Rancher + Original Farmstead
• Multiple outbuildings, barns and in ground pool
A TRUE SPORTSMAN'S PARADISE!!!
110 River Ranch Lane, Dayton Washington
\$2,150,000.00
Please visit WWW.110RiverRanch.com for more information

Jennifer Martin
509.540.7019
Jennifer@WallaWallaSIR.com
Walla Walla Sotheby's INTERNATIONAL REALTY

564 Farms 564 Farms 564 Farms 564 Farms 564 Farms 564 Farms 564 Farms 564 Farms

FarmSeller FARMSELLER.COM Find the land, farms, and ranches you're looking for

DIRECTORY OF PREMIUM AGENCY MEMBERS

- Brook Havens Cascade Sotheby's International Realty 541-604-0788
- Patty Cordoni Cascade Sotheby's International Realty 541-771-0931
- Pam Mayo-Phillips Cascade Sotheby's International Realty 541-480-1513
- Linda Long Crater Lake Realty Chiloquin, OR 541-783-2759
- Jerry Franklin Eastern Oregon Realty John Day, OR 541-575-2121
- Tim Cobb Farmland Company Spokane, WA 509-624-4408
- Robert Bacon Fischer Nicholso Realty Klamath, OR 541-545-1510
- Stacey Moyles Century 21 Showcase Realtors, Inc. Klamath Falls, OR 541-882-2121
- Lisa Johnson Horsepower Real Estate Junction City, OR 541-510-4601
- John Lee Lee Real Estate Aumsville, OR 503-245-9090
- Paul Terjeson Oregon Farm Brokers Corvallis, OR 503-999-6777
- Jason Nash Keller Williams Realty Southern Oregon 541-591-5195
- Steve Helms Keller Williams Farm & Ranch Albany, OR 541-979-0118
- Curtis Hitchcock Knipe Land Company Boise, ID 208-866-2825
- Janey Knipe Knipe Land Company Boise, ID 208-345-3163
- John Knipe Knipe Land Company Boise, ID 208-345-3163
- Tom Gill Knipe Land Company Mountain Home, ID 208-860-0776
- Julie Mansfield-Smith Mossy Oak Properties Copper Creek Land Co. Kimberly, OR 541-519-6891
- Jake Polvi POLVI Bend, OR 541-410-3050
- John Collins Ranch-N-Home Realty La Grande, OR 541-963-5450
- Judy Willis Real Estate Associates Joseph, OR 541-432-4060
- Ken Wick Real Estate Associates Joseph, OR 541-432-4060
- Mark Jones Robert Jones Realty Twin Falls, ID 208-733-0404
- Kirk Makin Ruby Peak Realty Joseph, OR 541-432-3131
- Claessee O'Connor Timberline Realty Joseph, OR 541-432-1234
- Jim Whitney Whitney Land Company Pendleton, OR 541-278-4444
- Todd Longgood Whitney Land Company Pendleton, OR 541-278-4444
- Robert Carnahan Artisan Real Estate Associates Dufur, OR 503-313-0419

- CALIFORNIA**
HOLLISTER SAN BENITO REALTY 831-637-5563
- IDAHO**
BOISE KNIPE LAND 208-345-3163
POCATELLO INTERMOUNTAIN LAND EXCHANGE, INC. 208-232-8306
STAR FLINDERS REALTY & EXCHANGE 208-334-3840
TWIN FALLS ROBERT JONES REALTY INC. 208-733-0404
- MONTANA**
BILLINGS ROCKY MTN. RANCH REAL ESTATE 406-259-6666
MISSOULA STELLING RANCH & LAND 406-728-9200
- NEVADA**
FALLON BERNEY REALTY LTD. 775-426-8023
- OREGON**
ALBANY KELLER WILLIAMS FARM & RANCH 541-979-0118
AUMSVILLE LEE REAL ESTATE 503-245-9090
BAKER CITY AGRILANDS REAL ESTATE 541-853-1212
INTERMOUNTAIN REALTY 541-523-4434
BEND CASCADE SOTHEBY'S INTERNATIONAL REALTY (PAM MAYO AND BROOK HAVENS) 541-923-1376
CASCADE SOTHEBY'S INTERNATIONAL REALTY (PATTY CORDONI) 541-771-0931
COLDWELL BANKER BAIN 541-280-4372
FAY RANCHES 541-419-0770
POLVI 541-410-3050
BONANZA FISHER NICHOLSON REALTY, LLC 541-545-1510
BURNS JETT BLACKBURN REAL ESTATE 541-573-7206
CHILOQUIN CRATER LAKE REALTY 541-783-2759
CORVALLIS OREGON FARM BROKERS 503-999-6777
DAYVILLE DUKE WARNER REALTY 541-987-2363
DUFUR ARTISAN REAL ESTATE ASSOCIATES 503-313-0419
JOHN DAY EASTERN OREGON REALTY 541-575-2121
JOSEPH REAL ESTATE ASSOCIATES 541-432-4060
TIMBERLINE REALTY 541-432-1234
RUBY PEAK REALTY 541-432-3131
JUNCTION CITY HORSEPOWER REAL ESTATE 541-510-4601
KIMBERLY MOSSY OAK PROPERTIES CUPPER CREEK LAND CO. 541-519-6891
KLAMATH FALLS KELLER WILLIAMS REALTY SOUTHERN OR 541-591-5195
CENTURY 21 SHOWCASE REALTORS, INC. 541-882-2121
LA GRANDE RANCH-N-HOME REALTY 541-963-5450
LAKEVIEW HIGH COUNTRY REAL ESTATE 541-417-0250
MEDICAL SPRINGS AGRILANDS REAL ESTATE 541-853-1212
NORTH BEND CADWELL REALTY GROUP 541-740-9854
RE/MAX SOUTH COAST 541-290-1850
ONTARIO TOM PHILLIPS AGENCY 541-889-8401
PENDLETON WHITNEY LAND CO. 541-278-4444
SALEM AGRI-BUSINESS REAL ESTATE 503-371-6409
SILVERTON HARCOURTS NW OREGON REALTY GROUP 503-873-8600
WILSONVILLE WOLF PROPERTIES NW 503-682-1789
- TEXAS**
DIMMITT SCOTT LAND CO. 800-933-9698
- WASHINGTON**
BURLINGTON RE/MAX TERRITORY NW 360-755-9494
CHEHALIS CENTURY 21 LUND REALTORS 360-748-8619
SPOKANE FARMLAND COMPANY 509-624-4408
TOLEDO RE/MAX PREMIER GROUP 360-520-4810