

525 Commercial Property

525 Commercial Property

525 Commercial Property

540 Recreational Property

546 Rentals, Leases

561 Ranches

564 Farms

564 Farms

564 Farms

564 Farms

564 Farms

564 Farms

564 Farms

564 Farms

564 Farms

564 Farms

564 Farms

564 Farms

564 Farms

564 Farms

564 Farms

564 Farms

564 Farms

564 Farms

564 Farms

564 Farms

564 Farms

564 Farms

564 Farms

564 Farms

564 Farms

564 Farms

564 Farms

564 Farms

564 Farms

564 Farms

564 Farms

564 Farms

564 Farms

564 Farms

564 Farms

564 Farms

564 Farms

564 Farms

564 Farms

564 Farms

564 Farms

564 Farms

564 Farms

564 Farms

564 Farms

564 Farms

564 Farms

564 Farms

564 Farms

564 Farms

564 Farms

564 Farms

564 Farms

564 Farms

564 Farms

564 Farms

564 Farms

564 Farms

564 Farms

**Processing Plant, Warehouse, Offices.** Property includes 5.14 Acres and 77,000sqft of buildings and office space. Hot pack processing line, warehouse, and offices. North of Salem, OR. Close to I-5. \$3,000,000. Email: farmforlease18@gmail.com

**DAYVILLE MERCANTILE!** Groceries, Feed, Liquor, Gifts. Your Opportunity to Live and Work in the country, \$599,000. Contract assumable. RMLS #20312089 Duke Warner Realty, Dayville, OR. 541-987-2363 www.dukewarnerrealtyofeasternoregon.com ddwr@ortelco.net

**Make your line ads work harder!** Enhance them to boost results. **GET NOTICED!**

- ADD an Attention Getter at the top
- CENTER some or all of the copy
- ADD a YELLOW BACKGROUND
- BOLD specific copy
- ADD a photo
- ADD a logo

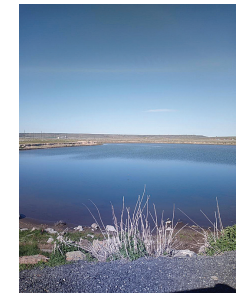
**Our sales reps are waiting to help you.**

1-800-882-6789

**AD DEADLINES:** CLASSIFIED DISPLAY ADS, WEDS. @ 10AM  
CLASSIFIED LINE ADS WEDS. @ NOON

**Capital Press**  
CapitalPress.com

**Amazing opportunity to own 235 timbered acres on Willapa Bay, WA.** Own your own recreational oceanfront paradise with breathtaking bay and ocean views backdropped by mountain ranges. Abundant wildlife include elk and deer, \$2,499,900. Call Debra Cromer 509-990-8733. Realty Executives Grant Co



**83 Acres 7 miles West of Burns, OR.** 1884 water right on entire parcel. With 30 acres of Native Meadows. Water supplied from numerous year round ground springs & 5.5 acre spring fed pond stocked with bass & blue gill. Best duck & goose hunting area in Harney County. Year round gravel road to property. Excellent homesite overlooking creek. There is a domestic well & pumphouse. Plus 2 small outbuildings on property. Broker owned, \$360,000. Possible Owner Financing. Call for more details. 541-589-2068

**PUBLISHER'S NOTICE**  
All real estate advertising in this newspaper is subject to the Fair Housing Act which makes it illegal to advertise "any preference, limitation or discrimination based on race, color, religion, sex, handicap, familial status or national origin, or any intention to make any such preference, limitation or discrimination." Familial status includes children under the age of 18 living with parents or legal custodians, pregnant women and people securing custody of children under 18. This newspaper will not knowingly accept any advertising for real estate which is in violation of the law. Our readers are hereby informed that all dwellings advertised in this newspaper are available on an equal opportunity basis. To complain of discrimination call HUD toll-free at 1-800-669-9777. The toll-free number for the hearing impaired is 1-800-927-9275.

5219450-1

**FOR LEASE Vegetable Processing Facility and 2 Storage Buildings** Hermiston Oregon. Processing Facility approximately 58,000 sq. ft. with office, lunch room, receiving area, packing room, two large cold rooms, shop/parts room, staging room, shipping/ loading dock for three (3) trucks, scales); 2 Storage Facilities (30,000 sq. ft. facility with dehumidification; 60,000 sq. ft. facility with computerized refrigeration and dehumidifiers), private railroad spurs for transportation, water rights (well), septic, electricity, water lagoon for waste water. Will possibly rent processing facility and storage facilities separately. Contact Larry Blunck at 503-656-1654 or larry@bluncklaw.com

**PLACE LINE CLASSIFIED ADS TOLL-FREE FROM ANYWHERE!** 1-800-882-6789

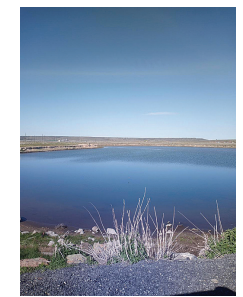
561 Ranches

**KNIFE LAND**  
Timbered Land - OR  
Timbered land parcels in NE Oregon ranging in size from 795± to 9,772± acres, all with great hunting and recreation. \$1,140,000 - \$9,319,000  
Cascade Timber Ranch NEW - ID  
640± acres with meadows, timber, a creek, & ponds. \$5,350,000. Or purchase 320± acres \$2,970,000.  
Carey Farm - New - ID  
30± air miles south of Sun Valley. 436± acres has 250± acres irrigated by 5 pivots and 3 wheel lines, & 1,288± sf home. Zoned for 1 home per acre, or 1 home per 10 acres. May work well to develop. BTVAD \$3,500,000  
208.345.3163 knipeland.com

**To Sell a Little, To Sell a Lot... Classified Line Ads 1-800-882-6789 CapitalPress.com**

**Wonderful little hobby farm with Cascade Mountain View's, Metolius, OR.** Close to town, schools and hospitals. The property offers 6+ irrigated acres. a long driveway leading to the fenced and cross fence pastures. This well loved and cared for manufactured home features three bedrooms two baths. 1040sqft. with a large wraparound deck for plenty of outdoor entertaining space. The large bay shop features a loft for extra storage or flex space. Bring your toys and animals! Offered at \$545,000. 1054 Dover, Madras OR. 97741. Rachel Bare, broker, Windermere Central Oregon Real Estate 541-604-0085; rbare@windermere.com

**Coast Fork vineyard and berries.** Set on the banks of the Willamette River with water rights and acres of grapes, blueberries, marionberries and more. 3 residences, barn with cold storage. This producing farm is a gem. \$2,000,000. Cottage Grove, OR. 541-221-8971 jetunderwood@windermere.com



**83 Acres 7 miles West of Burns, OR.** 1884 water right on entire parcel. With 30 acres of Native Meadows. Water supplied from numerous year round ground springs & 5.5 acre spring fed pond stocked with bass & blue gill. Best duck & goose hunting area in Harney County. Year round gravel road to property. Excellent homesite overlooking creek. There is a domestic well & pumphouse. Plus 2 small outbuildings on property. Broker owned, \$360,000. Possible Owner Financing. Call for more details. 541-589-2068

**FOR SALE BY OWNER**  
**Farm for Sale by Owner:** Older Dairy Farm in the heart of the Lower Yakima Valley, WA. 40 acres, 1 older home, plus 1 older mobile home. Dairy facilities and homes, 22 Acres. Remaining 18 acres wheel line irrigated, currently in Alfalfa. Sunnyside Valley Irrigation District water rights. Currently being used as a feed lot. Corrals have room for approximately 600 head. \$1,200,000. 509-840-3375; danvanboven@yahoo.com



**Miss a week... miss a GREAT DEAL!**

**6400 ACRE RANCH**

**6400 Acre Ranch** located near Dayville, OR. 1462 deeded acres and 5000 acres of contiguous, private, BLM allotment. Mild winter country that allows for year-round grazing with proper management. Large reservoir for irrigation storage and trophy fishing. 39 acres of irrigation water rights. New alfalfa fields. Safe and reliable water. The Battle Creek Ranch has an abundance of diversity from sagebrush/ juniper to ponderosa pine forests and quaking aspen stands. Ranch qualifies for 3 LOP tags for elk and 3 LOP tags for deer in the highly coveted Ochoco Unit. Additionally, the property qualifies for cow elk tags. Buyer to confirm landowner tags with ODFW. 2 homes, with an additional home that qualifies for a replacement dwelling. Potential rental income available. New corrals, multiple small outbuildings, and merchantable timber on the top end of the ranch. \$2,800,000. Call M.T. Anderson (541) 377-0030.  
mtanderson@craterlakerealtyinc.com

**Linda L. Long, Broker** 541-891-5562  
**M.T. Anderson** 541-377-0030  
Chiloquin, Oregon  
linda@craterlakerealtyinc.com • craterlakerealtyinc.com

**Your ad will benefit today from the strength of our newspaper and multimedia products and services.**

**Call today to advertise.**  
**Capital Press**  
1-800-882-6789  
Fax 503-370-4383  
CapitalPress.com

**FarmSeller FARMSELLER.COM Find the land, farms, and ranches you're looking for**

**DIRECTORY OF PREMIUM AGENCY MEMBERS**

- |  |   |   |  |   |
|--|---|---|--|---|
| <br>Brook Havens<br>Cascade Sotheby's International Realty<br>541-604-0788 | <br>Patty Cordoni<br>Cascade Sotheby's International Realty<br>541-771-0931 | <br>Pam Mayo-Phillips<br>Cascade Sotheby's International Realty<br>541-480-1513                 | <br>Linda Long<br>Crater Lake Realty<br>Chiloquin, OR<br>541-783-2759                                      | <br>Jerry Franklin<br>Eastern Oregon Realty<br>John Day, OR<br>541-575-2121 |
| <br>Tim Cobb<br>Farmland Company<br>Spokane, WA<br>509-624-4408            | <br>Robert Bacon<br>Fischer Nicholso Realty<br>Klamath, OR<br>541-545-1510  | <br>Stacey Moyles<br>Century 21 Showcase<br>Realtors, Inc.<br>Klamath Falls, OR<br>541-882-2121 | <br>Lisa Johnson<br>Horsepower Real Estate<br>Junction City, OR<br>541-510-4601                            |   |
| <br>John Lee<br>Lee Real Estate<br>Aumsville, OR<br>503-245-9090           | <br>Paul Terjeson<br>Oregon Farm Brokers<br>Corvallis, OR<br>503-999-6777   | <br>Jason Nash<br>Keller Williams Realty<br>Southern Oregon<br>541-591-5195                     | <br>Steve Helms<br>Keller Williams Farm & Ranch Albany, OR<br>541-979-0118                                 | <br>Curtis Hitchcock<br>Knife Land Company<br>Boise, ID<br>208-866-2825     |
| <br>Janey Knipe<br>Knife Land Company<br>Boise, ID<br>208-345-3163         | <br>John Knipe<br>Knife Land Company<br>Boise, ID<br>208-345-3163           | <br>Tom Gill<br>Knife Land Company<br>Mountain Home, ID<br>208-860-0776                         | <br>Julie Mansfield-Smith<br>Mossy Oak Properties<br>Cupper Creek Land Co.<br>Kimberly, OR<br>541-519-6891 | <br>Jake Polvi<br>POLVI<br>Bend, OR<br>541-410-3050                         |
| <br>John Collins<br>Ranch-N-Home Realty<br>La Grande, OR<br>541-963-5450   | <br>Judy Willis<br>Real Estate Associates<br>Joseph, OR<br>541-432-4060     | <br>Ken Wick<br>Real Estate Associates<br>Joseph, OR<br>541-432-4060                            | <br>Mark Jones<br>Robert Jones Realty<br>Twin Falls, ID<br>208-733-0404                                    | <br>Kirk Makin<br>Ruby Peak Realty<br>Joseph, OR<br>541-432-3131            |
| <br>Claessee O'Connor<br>Timberline Realty<br>Joseph, OR<br>541-432-1234   | <br>Jim Whitney<br>Whitney Land Company<br>Pendleton, OR<br>541-278-4444    | <br>Todd Longgood<br>Whitney Land Company<br>Pendleton, OR<br>541-278-4444                      | <br>Robert Carnahan<br>Artisan Real Estate Associates<br>Dufur, OR<br>503-313-0419                         |   |

- CALIFORNIA**  
HOLLISTER SAN BENITO REALTY 831-637-5563
- IDAHO**  
BOISE KNIFE LAND 208-345-3163  
POCATELLO INTERMOUNTAIN LAND EXCHANGE, INC. 208-232-8306  
STAR FLINDERS REALTY & EXCHANGE 208-334-3840  
TWIN FALLS ROBERT JONES REALTY INC. 208-733-0404
- MONTANA**  
BILLINGS ROCKY MTN. RANCH REAL ESTATE 406-259-6666  
MISSOULA STELLING RANCH & LAND 406-728-9200
- NEVADA**  
FALLON BERNEY REALTY LTD. 775-426-8023
- OREGON**  
ALBANY KELLER WILLIAMS FARM & RANCH 541-979-0118  
AUMSVILLE LEE REAL ESTATE 503-245-9090  
BAKER CITY AGRILANDS REAL ESTATE 541-853-1212  
INTERMOUNTAIN REALTY 541-523-4434  
BEND CASCADE SOTHEBY'S INTERNATIONAL REALTY (PAM MAYO AND BROOK HAVENS) 541-923-1376  
CASCADE SOTHEBY'S INTERNATIONAL REALTY (PATTY CORDONI) 541-771-0931  
COLDWELL BANKER BAIN 541-280-4372  
FAY RANCHES 541-419-0770  
POLVI 541-410-3050  
BONANZA FISHER NICHOLSON REALTY, LLC 541-545-1510  
BURNS JETT BLACKBURN REAL ESTATE 541-573-7206  
CHILOQUIN CRATER LAKE REALTY 541-783-2759  
CORVALLIS OREGON FARM BROKERS 503-999-6777  
DAYVILLE DUKE WARNER REALTY 541-987-2363  
DUFUR ARTISAN REAL ESTATE ASSOCIATES 503-313-0419  
JOHN DAY EASTERN OREGON REALTY 541-575-2121  
JOSEPH REAL ESTATE ASSOCIATES 541-432-4060  
TIMBERLINE REALTY 541-432-1234  
RUBY PEAK REALTY 541-432-3131  
JUNCTION CITY HORSEPOWER REAL ESTATE 541-510-4601  
KIMBERLY MOSSY OAK PROPERTIES CUPPER CREEK LAND CO. 541-519-6891  
KLAMATH FALLS KELLER WILLIAMS REALTY SOUTHERN OR 541-591-5195  
CENTURY 21 SHOWCASE REALTORS, INC. 541-882-2121  
LA GRANDE RANCH-N-HOME REALTY 541-963-5450  
LAKEVIEW HIGH COUNTRY REAL ESTATE 541-417-0250  
MEDICAL SPRINGS AGRILANDS REAL ESTATE 541-853-1212  
NORTH BEND CADWELL REALTY GROUP 541-740-9854  
RE/MAX SOUTH COAST 541-290-1850  
ONTARIO TOM PHILLIPS AGENCY 541-889-8401  
PENDLETON WHITNEY LAND CO. 541-278-4444  
SALEM AGRI-BUSINESS REAL ESTATE 503-371-6409  
SILVERTON HARCOURTS NW OREGON REALTY GROUP 503-873-8600  
WILSONVILLE WOLF PROPERTIES NW 503-682-1789
- TEXAS**  
DIMMITT SCOTT LAND CO. 800-933-9698
- WASHINGTON**  
BURLINGTON RE/MAX TERRITORY NW 360-755-9494  
CHEHALIS CENTURY 21 LUND REALTORS 360-748-8619  
SPOKANE FARMLAND COMPANY 509-624-4408  
TOLEDO RE/MAX PREMIER GROUP 360-520-4810