

**210 Trucks**

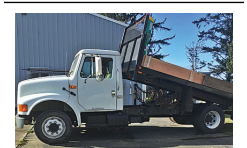
1981 International Dump Truck, Model 1954, single axle, CAT 3208, 10 speed, air tail gate, \$1500 Dallas, OR. 503-931-3724



2002 Peterbilt 357 Cab & Chassis, 400HP ISM Cummins, 10 speed, double frame, 59,000GVW, 172" cab to trunnion, 22' total, wet kit, \$49,500 Overtime Equipment LLC, 21338 Hwy 30, Filer ID, 83328; 208-734-3434



2006 Freightliner M2 3 Axle Dump Truck, 385HP C11 CAT, 13 speed, 120k,000 Miles, 56kGVW, 16' bed with vibration. \$59,500 Overtime Equipment, LLC. 21338 Hwy 30, Filer ID. 83328, 208-734-3434



1991 International Diesel Truck: 14ft flatbed dump, \$8500. Brookings, OR. 541-469-2068



2009 Sterling Acterra with 10ft. dump bed, 3500 LB. Autocrane and arrowboard. 6.7 Cummins diesel, Allison AT, PS, AC, CC, PW. 23,000 GVW. 245/19.5 tires are like new. 50,495 ACTUAL MILES. One owner former large City vehicle that is in like new condition. Work ready, \$19,900. Located in Twin Falls ID. Call 208-613-0050



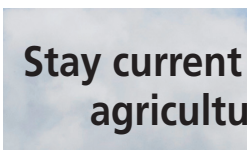
1991 GMC TopKick with 15,000lb. crane. 34ft. reach. 17,000 ACTUAL MILES. 3116 CAT Diesel and 5&2 transmission. One owner County truck from Southern California that has been well maintained. Very clean and runs, operates and drives like new. MILES ARE CORRECT! \$16,900. Located in Twin Falls ID. \$16,900. Call 208-613-0050.



2010 IHC WorkStar 7600 tandem axle with 24ft. reefer van and SUBZERO ThermoKing Diesel reefer unit. Roll up rear door with 6600 LB Lift-Gate. Cummins ISM Diesel 410HP. 10 Speed. Fuller Transmission. PS, AC, CC, PW, Jake. Locker rears. Near new 11/22.5 radials. One owner unit from the California Dept. of Education. This truck is in near new condition throughout. Beautiful and work ready, \$44,900. Located in Twin Falls ID. Call 208-613-0050



1994 GMC TopKick Single Axle dump truck. 25800GVW. CAT 3116 Diesel Allison Automatic. PS, cc. 5 yard bed. Like new radials. 143,000 ACTUAL MILES. Absolutely immaculate rust free truck from the California DOT. Looks runs and drives like it's brand new. \$19,900. Located in Twin Falls ID. Call 208-613-0050



**210 Trucks**



1999 IHC 2674 Tandem axle dump truck. 15 yard bed. Cummins N-14 Diesel 13 speed transmission. AC, PS, CC, PW, Jake brake. Side Lock differentials. 18K. Front Axle. Hendrickson spring rears. 138,000 ACTUAL MILES and 5900 HOURS. Former State DOT Truck. Runs, drives, and operates like new. Well maintained. Records available, \$24,900. Located in Twin Falls ID. Call 208-613-0050



1995 International 4900: diesel DT466. All wheel drive, 6x6, pole auger lineman truck, 32,000lb. capacity, Altec D3060t, 3 stage, seat controls, crane, automatic transmission, 4 outriggers, rear hydraulic winch, 96519 miles \$29,000. Gaston, OR. 503-789-3726



2007 Sterling 9500 with Grizzly 267C LOG LOADER. 2200 HOURS. 26,700lb. lift capacity. 360 non continuous rotation. 44" grapple with 25ft. reach. 12.8L Diesel. 430HP. 8LL Eaton transmission, 64,000 GVW. 90% 11/22.5 radials. Truck came from the State of Arizona Power Authority and has had fantastic taxpayer maintenance. Truck looks, operates and drives like a new one, \$49,000. Located in Twin Falls ID. Call 208-613-0050.



1996 IHC 4900 15ft. flatbed truck with removable 4 ft. stake sides and 3000 Lb. liftgate. T444E, 7.3 L. Turgo Diesel with 5 and 2 trans. 103,000 ACTUAL MILES. Brand new radial tires. 26,000 GVW. NO CDL. One owner truck from Cal Fire. Clean, well maintained and operates like new. \$14,900. Located in Twin Falls ID. Call 208-613-0050



1994 IHC 2674 with 8ft. reach Altec AM855 with elevator and overcenter. 83,000 ACTUAL MILES. DT466 Diesel. 13 speed transmission, 2 man bucket, full rotation with 700 Lb. capacity and 2000 Lb. material handler. Truck is a one owner that was certified when taken out of service. Well maintained with no leaks, is very clean and runs operates and drives like new. WORK READY, \$29,000. Located in Twin Falls ID. Call 208-613-0050



1992 Ford F800 SEWER JETTER TRUCK. 2003 Model Sewer Equipment of America Jetter system. 2000 gallon water tank. 43,000 ACTUAL MILES on truck. 6 cylinder Diesel. Allison transmission. Near new radials. Exceptionally clean one owner former City truck that runs drives and operate like new, \$12,900. Located in Twin Falls ID. Call 208-613-0050



**210 Trucks**



1976 International 1600 10 wheeler, 20ft steel bed with hoist, 478 gas engine, very good condition, \$12,500 OBO. Toppenish, WA. 509-728-5000



2004 IHC 7400 Dump Truck with DT530 Diesel, 300HP. Eaton 10 speed Transmission. 37K. GVW. AC, Cruise, Jake brake. Plumbed for trailer. 70% 12/22.5 radials. One owner former State agency. Very clean and well maintained. Ready to work, \$19,900. Located in Twin Falls ID. Call 208-613-0050



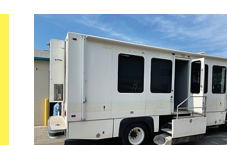
2001 IHC 4900 single axle dump truck. 7 to 8 yard. DT466 Diesel. Allison 6 speed. Automatic. PS, AC, CC. 150K. ACTUAL MILES. Near new 11/22.5 radials. Very clean and well maintained former State truck that is RUST FREE and work ready, \$18,900. Located in Twin Falls ID. Call 208-613-0050



2005 IHC Paystar 5500i tandem dump truck. 14ft. Stainless Steel dump bed with 28in. live chain floor with removable conveyor cover and regular tailgate with metered gate discharge. Cummins ISX 435HP Diesel. Eaton 13 speed. PS, AC, CC, Jake. Brand new 11/22.5 radials. Bed alone is \$70K new. One owner former State truck that is in like new condition. Well maintained! \$36,900. Located in Twin Falls ID. Call 208-613-0050



**210 Trucks**



1991 GMC MOBILE OFFICE 26' TRUCK. Cab-inets, desks. Nice stairwell entry. Toilet, sink, microwave, refrigerator. Commercial AC unit powered by a 10 KW genset. 30,000 ACTUAL MILES. 427 V8 gas with Allison Automatic. PS, AC, CC. Former Municipal Command Center. Immaculate and mechanically perfect, \$14,900. Located in Twin Falls ID. Call 208-613-0050



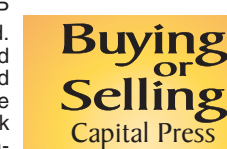
1990 Ford F800 Diesel: 10 speed, 2,000 gallon tank, 2 front; 2 rears, one side spray. Hose reel. Low mileage, \$16,000 Atwater, CA. 209-604-1342



2018 Volvo vnl84t very clean and well kept truck Mileage: 253112. Engine: d13 500HP. Transmission: 12 speed volvo i shift. Rarend: mt40-14x4c 40,000lb axle. Gear ratio: 3.36. Drop axle, dual 100 gallon tanks. Air ride suspension. Disc brake all around, \$94,500. Ellensburg, WA. 509-480-0801



1993 International 2100 Vacuum Excavation Truck, material dump, aluminum water tanks, blower, extendable boom, DT466, auto, asking \$29,500. Sandy, OR. Call Pepe: 503-544-3232; Call Pat: 503-407-9062



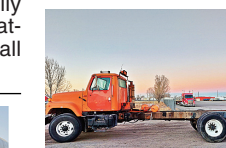
2015 Freightliner 3-axle day cab, DD 13 470HP, Fuller 10-spd., 186" WB, PS, A/C, cruise, engine brake.....\$34,500



**210 Trucks**



1988 Kenworth T800 with 21ft. roller deck dump bed. NTC Cummins Diesel. 13 speed. Jake, AC, PS. 236K MILES. 70% 11/225 radials. Very clean and well maintained original owner truck that is rust free and work ready, \$15,900. Located in Twin Falls ID. Call 208-613-0050



2001 IHC 2574 tandem axle cab and chassis. N-14 Cummins, 13 speed. 112,000 ACTUAL MILES. Jake, PS, AC, PS. Traction lock. 164" cab to trunnion. Double frame full length. Hendrickson spring rears. 64,000 GVW. Near new 22.5 Radial tires. Former California DOT truck that has had excellent maintenance. Runs, drives and operates like new. NO RUST! \$26,900. Located in Twin Falls ID. Call 208-613-0050



"I get great results with Capital Press...and I have for over 20 years." Mark, Pro Truck

Call 1-800-882-6789 to advertise.

**210 Trucks**

**POWER FLEET & COMMERCIAL SALES**  
**MEDIUM DUTY DEALER**



2021 Ford Transit Cutaway Stock #F10608

Call for your business preferred price!

**CHEVROLET BUSINESS ELITE**  
**POWER FLEET - COMMERCIAL**  
**WWW.POWERAUTOGROUP.COM**  
**503-769-7100**

**1-800-882-6789**  
**Fax (503) 370-4383 • CapitalPress.com**

**LOVELL Truck Sales** 50th ANNIVERSARY

1994 Freightliner 4-axle transfer dump, C-12 CAT, 8 LL trans. Chambers susp., 46k rears, 14,600 front, 4-axle transfer trailer, call for more details.....\$29,500

1991 Kenworth T-800 dump truck, Cummins Big Cam IV, 13 spd., walking beam susp., 14' box, 2 spd. rear ends .....\$18,500

1996 Wabash 45' reefer trailer, Thermo King SB3 SR reefer, rail gate \$5,500 Also, 2001 Great Dane 48' reefer trailer, Carrier Phoenix reefer (non-working), nice rail gate \$5,500

2015 Freightliner 3-axle day cab, DD 13 470HP, Fuller 10-spd., 186" WB, PS, A/C, cruise, engine brake.....\$34,500

2006 Volvo VNL 3-axle day cab, Cummins 15X 400Hp, Fuller 10-spd., engine brake, PS, A/C, CC .....\$14,500

**LOVELLTRUCKSALES.COM**  
**LovellTruck@canby.com**  
**1-800-451-0012**  
**(503) 266-5886**  
**FAX (503) 266-6903**  
**680 SW 1st Ave (Hwy 99 E) Canby, OR**

**NEWBERG Ford COMMERCIAL SALES**

**FARM BUREAU MEMBERS GET ADDITIONAL \$500 REBATE<sup>1</sup>**

Call 503-312-4006

**2021 F-250 Crew Cab**  
6.2L V-8, Cruise Power Group, Trailer Brake Controller, Tow Package, SYNC Bluetooth, 3.73 Axle, AC, SYNC Bluetooth  
MSRP \$41,455 + ADAM \$990  
#1FMEK31254 Your Price: **\$42,445**

**2021 F-250 SuperCab 4x4 Service Body**  
6.2L V-8, Tow Package, STX Package, Power Group, AC, Cruise Control, Backup Camera, Trailer Brake Controller  
MSRP \$63,660 - Our Discount \$2,191 - Uplift Rebate\* \$500  
#1FMEK43759 Your Price: **\$60,969**

**2020 Transit Connect Titanium Wagon**  
2.0L I4, 8-Speed Transmission, Power Group, Tow Package, Air Conditioning, Panoramic Roof, Adaptive Cruise Control  
MSRP \$39,520 - Our Discount \$2,990  
#1NML145494 Your Price: **\$36,530**

**2021 F-350 Diesel 12 ft Landscaper**  
6.7L Diesel, 10-Speed Transmission, 3.73 Axle, Tarp, Cruise Control, Trailer Hitch, AC, SYNC Bluetooth, Trailer Brake Controller  
MSRP \$71,100 - Our Discount \$1,131 - Uplift Rebate\* \$1,000  
#1FMED59193 Your Price: **\$69,969**

**2021 F-350 12 ft Flatbed**  
7.3L V-8, Hitch, 10-Speed Transmission, All-Terrain Tires, Power Group, Cruise SYNC Bluetooth, 4.30 LS Axle, AC, Trailer Brake Controller  
MSRP \$58,230 - Our Discount \$1,261 - Uplift Rebate\* \$1,000  
#1FMEE11035 Your Price: **\$55,969**

**2022 E450 16 ft Box Van**  
7.3L V-8, Hitch, 14,500 GVW, Walk Ramp, AC, Rearview Camera, SYNC Bluetooth, Cruise Control, Power Group  
MSRP \$61,100 - Our Discount \$366 - Rebate \$1,000 - Uplift Rebate\* \$1,000  
#1FNEC15993 Your Price: **\$57,969**

**2021 F-150 4x4 8 ft Bed**  
2.7L V-6 EcoBoost, 10-Speed Transmission, Tow Package, Power Group, Cruise Control, Air Conditioning, SYNC Bluetooth  
MSRP \$38,935 + ADAM \$990  
#1FMEK43759 Your Price: **\$39,925**

**2021 F-150 SuperCab 4x4**  
3.5L EcoBoost, 10-Speed Transmission, Tow Hitch, AC, Power Group, Cruise Control, Reverse Sensing Syst, SYNC Bluetooth  
MSRP \$40,160 + ADAM \$990  
#1FMK060742 Your Price: **\$41,150**

**2021 F-350 Crew Cab 4x4 9 ft Contractor**  
7.3L V-8, Hitch, All-Terrain Tires, Cruise, Power Group, SYNC Bluetooth, 4.30 LS Axle, AC, Backup Camera, Trailer Brake Controller  
MSRP \$71,305 - Our Discount \$336 - Uplift Rebate\* \$1,000  
#1FMED31272 Your Price: **\$69,969**

**2022 F-350 Crew Cab 4x4 STX 8 ft Bed**  
6.7L Diesel, STX Pkg, 14,500 GVW, 10-Speed Transmission, Power Group, Cruise Trailer Brake Controller, Tow Package, AC, Rearview Camera, SYNC Bluetooth  
MSRP \$61,220 + ADAM \$990  
#1FNEC12689 Your Price: **\$62,210**

**2022 E350 15 ft Box Van**  
7.3L V-8, Hitch, 12,500 GVW, Walk Ramp, Rearview Camera, SYNC Bluetooth, Cruise Control, Air Conditioning  
MSRP \$57,745 - Our Discount \$776 - Rebate \$1,000 - Uplift Rebate\* \$1,000  
#1FNDC15992 Your Price: **\$54,969**

**2021 F-150 4x4 SuperCab**  
2.7L V-6 EcoBoost, 10-Speed Transmission, Tow Package, AC, Power Group, Cruise Chrome Package, Trailer Brake Controller, SYNC Bluetooth  
MSRP \$41,715 + ADAM \$990  
#1FMFB31590 Your Price: **\$43,705**

**2021 F-450 Crew Cab 4x4 11 ft Service Body**  
6.7L Diesel, AC, High Capacity Tow Pkg, Cruise Control, SYNC Bluetooth, 4.30 LS Axle, Backup Camera, Trailer Brake Controller  
MSRP \$81,870 - Our Discount \$901 - Uplift Rebate\* \$1,000  
#1FMED31280 Your Price: **\$79,969**

**2021 Transit T350 HR KUV**  
7.3L V-8, Hitch, 12,500 GVW, Walk Ramp, Rearview Camera, SYNC Bluetooth, Cruise Control, Air Conditioning  
MSRP \$60,835 - Our Discount \$366 - Rebate \$500 - Uplift Rebate\* \$1,000  
#1FMKA52098 Your Price: **\$58,969**

**2021 F-150 4x4 SuperCrew 5.5 ft Bed**  
5.0L V-8, 10-Speed Transmission, Tow Package, AC, Power Group, Cruise Control, Trailer Brake Controller, SYNC Bluetooth  
MSRP \$45,800 + ADAM \$990  
#1FMKE43762 Your Price: **\$46,790**

**2016 F-250 4x4 8 ft Bed with Rack**  
6.2L V-8, Racks & Boxes, Power Group, Air Conditioning, Cruise Control  
Preowned: #1FTBF2B6EG  
**\$28,969**

**Stay current on the latest agricultural news.**

- State & Federal Laws
- Regulations
- Breaking News
- Varieties of Crops
- Conservation Issues
- Politics
- And More

**ANYTIME • ANYWHERE**

Call today to subscribe.  
**Capital Press**  
1-800-781-3214  
CapitalPress.com

visit **newbergfordfleet.com**  
**503-312-4006**

Offers expire 7 days after publication and subject to prior sale and incentive changes. \*Warranty, F-150 & Super Duty only. \*\*Uplift rebates for businesses only with your \$1200 or more uplift. \*\*\*Must finance with Ford Credit. \*\*\*\*Trade-In Assistance Rebate requires trade-in of 1995 or newer vehicle or lease terminated 30 days prior to 90 days after delivery. \*\*\*\*\*Requires proof of business ownership. Sales prices do not include license & title and \$115 documentation fee. Pictures and actual units may vary. Sale prices do not apply to A, X, Z and D plans. The amount shown as MSRP is for informational purposes only and is the Manufacturer's Suggested Retail Price. This amount does not represent an advertised or selling price and does not include the price of any dealer added equipment. All advertised prices exclude government fees and taxes, any finance charges or the \$115 dealer document processing charge.

**NEWBERG Ford COMMERCIAL SALES**

Dale E. Sykes  
Commercial Sales Manager  
Available 7 days a week at:  
503-312-4006  
dale@newbergford.com