

Classifieds

OMISSION & ERROR: Capital Press will exercise due care to prevent omissions and mistakes, but its total liability for any error, in any advertisement published, shall not exceed the proportionate space in which the error occurred. Credit, when allowable, will apply to the first insertion only.

Our Sales Team is Here to Serve You!



Anne Long
National Sales & Outside the Pacific Northwest
503-871-7957
along@capitalpress.com



Jim Holt
NE Oregon, East Washington & North Idaho
509-413-7674
jholt@capitalpress.com



Pat McKenzie
South Willamette Valley, South Oregon, Central Oregon, & California
541-521-9008
pmckenzie@capitalpress.com



Scott Hallett
NW Oregon and W Washington
503-308-2478
shallett@capitalpress.com



JoAnn Vanderwey
South Idaho, NE Nevada, & SE Oregon
208-880-4334
jvanderwey@capitalpress.com

800-882-6789 | View all classified ads for free at CapitalPress.com

Classified Index

Acreage.....579	Farm, Yard, Estate Sales.....351	Potato/Sugar Beet Equip.....914
Alpacas & Llamas.....743	Farms.....564	Poultry & Fowl.....722
Antique Farm Eq. & Parts.....905	Feed, Grain.....719	Public Notices.....107
Antique/Classic Vehicles.....201	Fencing.....802	Rabbits.....725
Antiques & Collectibles.....813	Fertilizer & Soil Amendments.....825	Ranches.....561
Arts & Crafts.....816	Fish.....721	Ranchettes.....558
ATVs/Motorcycles.....219	Forklifts.....896	Real Estate Auctions.....534
Auction Sales.....354	Fuel, Heating & Firewood.....807	Real Estate Wanted.....531
Automobiles.....204	Garden, Turf, Yard Equip.....908	Recreational Property.....540
Bees.....823	Generators.....878	Refrigeration Equipment.....863
Bison.....761	Goats.....746	Rentals, Leases.....546
Boat Trailers.....260	Hay Equip.....911	Residential Property.....549
Boat/RV Storage.....269	Hay, Straw, Forage.....716	Rock, Sand & Gravel.....803
Boating Parts/Accessories.....254	Heavy & Indust. Eq.....899	RV Parts & Accessories.....307
Boats for Sale.....251	Help Wanted.....651	RVs & Travel Trailers.....301
Boats Wanted.....257	Hemp.....835	Sawmill Equip.....894
Building Materials.....804	Horses, Mules, Donkeys.....731	Seed.....824
Business-Sales Opportunities.....643	Irrigation Equip.....887	Services.....664
Business for Sale.....644	Lab Testing Services.....665	Sheep.....740
Campers & Canopies.....310	Land.....576	Shop Equip. & Tools.....881
Cattle - Beef.....758	Legal Notices.....101	Sporting Goods/Hunting.....819
Cattle - Dairy.....755	Livestock Equip. & Supplies.....869	SUVs.....207
Christmas Trees.....821	Loans & Financing.....667	Swine.....749
Coast Property.....543	Logging Equip.....893	Tanks & Storage.....875
Commercial Property.....525	Mini Ranchettes.....555	Timber Property.....573
Condos for Sale.....510	Misc for Sale.....828	Timber/Lumber.....801
Crop Protection Products.....827	Mixed Livestock Sales.....752	Tires & Wheels.....228
Dairy Eq. & Supplies.....872	Mobile & Mfd. Home.....537	Tractors.....920
Dairy Farms.....567	Nursery Equipment & Supplies.....907	Trailers Misc.....316
Dogs, Cats, Pets.....728	Nursery Stock Plants.....822	Trailers, Horse & Stock.....319
Draft Horses & Equip.....734	Obituaries.....91	Truck/Auto Parts & Accessories.....222
Emu, Ostrich, Rhea.....744	Orchard & Vineyard Property.....570	Trucks.....210
Equestrian Property.....552	Orchard/Vineyard Equip.....917	Utility Trailers.....313
Exotic Animals.....737	Organic.....826	Vacation Homes for Sale.....513
Farm Buildings.....805	Packing/Processing Eq.....890	Vans.....216
Farm Equip Parts.....902	Pasture.....582	Well-Drilling Equip.....884
Farm Equipment.....923	Pickups.....211	Work Wanted.....652

1-800-882-6789 | CapitalPress.com

107 Public Notices

The Harney SWCD is accepting bids on a juniper treatment project located near Drewsey, OR approximately 46 miles east of Burns, OR. There are 142 acres of cutting, lop and scattering, and hand piling. A mandatory bid tour will be held on September 10th @ 8:30 a.m. departing from HSWCD office. Contractors are required to meet all Oregon public contracting laws, maintain a \$2.0 million dollar general liability insurance policy, and be licensed to conduct business in Oregon. Sealed bids are due either by hand delivery or by mail no later than noon, Friday, September 17, 2021. More information and bid packets can be obtained at the HSWCD office located 530 Hwy 20 South in Hines, or on the district website, HarneySWCD.org. 5257697-1

210 Trucks

R & G MACHINING AND ENGINE PARTS
COMPLETE DIESEL MACHINE SHOP AND TRUCK REPAIR
MULINO, OREGON • SHOP: 503-829-6038 • NATIONWIDE: 1-800-823-6038
We Absolutely, Positively Have The Best Remanufactured Engines Available Anywhere!
Huge Inventory • Expert Technical Assistance

ENGINES INSTALLED PRICING
Incidentals extra. Exchange 100,000 mile warranty when we install!
Depending on applications:
GM 6.2 - 6.5T, installed.....\$6995
Ford 6.4 P/S, installed.....\$12,750
Ford 94-03 7.3 P/S, installed.....\$7900
Cummins 88-02 5.9, installed.....\$8400
Cummins 03 & Up, 5.9 C/R, installed.....\$9450
Cummins 6.7, installed.....\$10,250

• We grind and weld crankshafts and camshafts
• We weld blocks & cylinder heads
• Exchange connecting rods or connecting rod kits
• Diesel or Gas engine kits
• Cylinder head or block O-ringing
All Years & Models: Turbos, Injectors, High Pressure Oil Pumps, Fuel Injection Pumps, Oil Coolers, Computers - Ford, GM Chrysler

CUMMINS 5.9 MAGNUM

IN BUSINESS SINCE 1975.

OVER 250 ENGINES & 450 CYLINDER HEADS IN STOCK!
We have a complete line of import diesels and obsolete diesels for your mini excavators or skidsteers. We work and repair all brands!

NEED ENGINE PARTS, GAS OR DIESEL - CHECK IT OUT:
WWW.EBAY.COM/STR/GRUMPYSPERFORMANCECENTER
GRUMPYSPERFORMANCE@GMAIL.COM

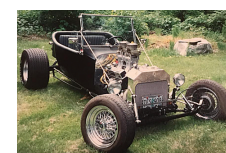
REBUILT DIESEL L/B ENGINES

CUMMINS	PERKINS & ISUZU
3.9-4BT.....\$4,150	Starting at.....\$5,995
5.9 '88-'02.....\$4,250	MITSUBISHI & NISSAN
5.9 '03 & up.....\$4,650	Starting at.....\$5,995
6.7 C/R.....\$4,950	YANMAR & KUBOTA
FORD	Starting at.....\$4,495
6.0 P/S.....\$5,345	BOBCAT & SHIBAURA
6.4 P/S.....\$6,045	Starting at.....\$3,995
6.7 P/S.....\$7,150	DOOSAN & TAKEUCHI
6.9-7.3 IDI.....\$4,650	Starting at.....\$5,995
7.3 P/S.....\$4,650	MERCEDES
GM	Starting at.....\$8,995
6.6 Duramax.....\$6,050	HINO & IVECO
6.2-6.5.....\$4,395	Starting at.....\$5,995
JOHN DEERE & IH	Starting at.....\$5,995
Starting at.....\$5,995	KOBELCO, KOMATSU, HITACHI
CATERPILLAR & HYUNDAI	Starting at.....\$5,995

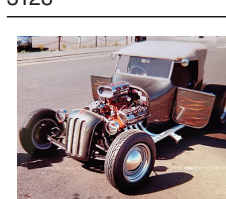
We have a large inventory of rebuilt or remanufactured cylinder heads, connecting rods, crankshafts, and blocks on an exchange basis for diesel and gas engines.

Call on other gas or diesel engines. We are a major rebuilder on all diesel brands. All work done in house!

201 Antique/Classic Vehicles



23-T Bucket Roadster: 350 Chevrolet 480HP, Saginaw 4 speed, Chrysler 3.23 rear end ratio, Volvo front suspension, 1300 miles, stereo, cassette, \$17,000. Raymond, WA. 360-208-3128



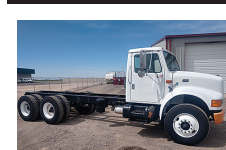
1918 Dodge Bros. Roadster convertible. 354 Chrysler Hemi, automatic with backup camera and Tonneau cover, \$21,500 OBO. Winlock, WA. 360-304-8036

204 Automobiles

1946 four door Ford V8 sedan, no rust cancer, new tires, does not run, has title, nice restoration car, \$6000 OBO. Baker City, OR. 541-519-9682

1927 Model T Roadster, older restoration, 2 speed rear drive, also 3 speed warford transmission, nice running car with title. \$11,000 OBO Baker City, OR. 541-519-9682

210 Trucks



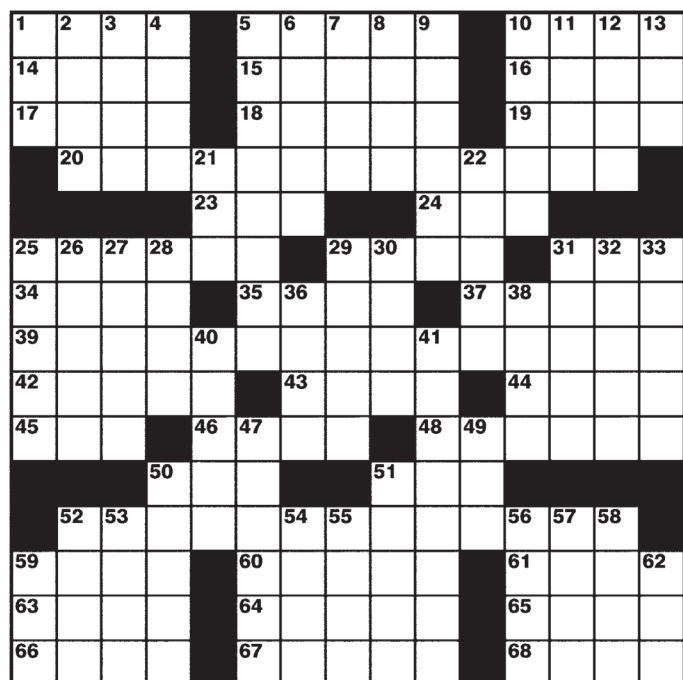
1997 INTERNATIONAL 4900 Cab & Chassis, mech DT466, 6 speed Allison, 21,000 miles, 2300 hours, 143" cab to trunnion, 18' total \$26,500 Overtime Equipment, LLC. 21338 Hwy 30 Filer, ID. 208-734-3434

Your ad here! Call 800-882-6789

Newsday Crossword

LAST LAUGH by Sally R. Stein Edited by Stanley Newman www.stanxwords.com

- | | |
|--|---------------------|
| ACROSS | DOWN |
| 1 Not as much | 1 Fall behind |
| 5 Brings up | 2 Money in Spain |
| 10 Uses a scissor | 3 Film headliner |
| 14 Kia or Cadillac | 4 Mixer with scotch |
| 15 Earliest stage | 5 Casino wheel game |
| 16 Tightly closed | |
| 17 Alum | |
| 18 Speak | |
| 19 Small horse | |
| 20 Warren Buffett's nickname | |
| 23 __ capita income | |
| 24 Family room | |
| 25 State with confidence | |
| 29 High schooler | |
| 31 Captain's journal | |
| 34 Sly glance | |
| 35 At that time | |
| 37 Take care of | |
| 39 Washingtons, the first First Family | |
| 42 Entertain | |
| 43 "This __ sudden!" | |
| 44 Skeptic's comment | |
| 45 Class for recent immigrants: Abbr. | |
| 46 Ceramic square | |
| 48 San Francisco NFLers, for short | |
| 50 24-hr. cash source | |
| 51 Cockpit announcement: Abbr. | |
| 52 Musical about Don Quixote | |
| 59 Horse controller | |
| 60 Boca __, FL | |
| 61 Touch down | |
| 63 Loosen, as a necktie | |
| 64 Lloyd Webber show | |
| 65 Female voice range | |
| 66 Hard at work | |
| 67 Gobbled up | |
| 68 Prepare to be photographed | |
| 6 Walk on stage | |
| 7 Regarding | |
| 8 Coral structure | |
| 9 Took long steps | |
| 10 Senate broadcaster | |
| 11 "Yikes!" | |
| 12 __ fish salad | |
| 13 Pigpen | |
| 21 Lifesaving technique: Abbr. | |
| 22 High-IQ club | |
| 25 Seaweed | |
| 26 Looks to be | |
| 27 South Korean capital | |
| 28 Makes a mistake | |
| 29 Nervous | |
| 30 Comes to a close | |
| 31 Leave alone | |
| 32 None of the above | |
| 33 Horned barnyard beasts | |
| 36 Frozen rain | |
| 38 Ireland alias | |
| 40 Arrive at | |
| 41 Native of Butte | |
| 47 Escapee's shout | |
| 49 Author Fleming | |
| 50 Be a bother to | |
| 51 Overact | |
| 52 Diner listing | |
| 53 Assists | |
| 54 Volcanic flow | |
| 55 Take a crack __ (try) | |
| 56 Thunder sound | |
| 57 Angelic topper | |
| 58 Pantry invaders | |
| 59 Massage | |
| 62 Female deer | |



Answers in classification 890

5226311-1

SUBURBAN CHEVROLET
36936 Hwy. 26
Sandy, OR 97055

FIND NEW ROADS[®] CHEVROLET

NEW 2021 LCF 4500
6.6L-V8 GAS, 14,500LB. GVWR., 18' BOX W/RAMP #T210556
MSRP \$67,999
PRICE AFTER REBATE **\$59,703**

NEW 2021 4x4 6500
6.6L Duramax, 16' Rugby flatbed. #T210485
MSRP \$79,041
PRICE AFTER REBATE **\$76,487**

NEW 2020 6500 Regular Cab
23,500 LB GVWR, 22' FLATBED #T200710
MSRP \$78,467
PRICE AFTER REBATE **\$70,987**

CHEVROLET BUSINESS ELITE
(503) 668-5555
fax: (503) 668-4359
www.suburbanchevrolet.com

CLASSIFIED ADS SELL!
Advertise Today!
1-800-882-6789 • CapitalPress.com

DON'T FORGET
Call in your classified ad by Wednesday: 10:00...Display (bordered) Ad Noon.....Line Ad
Toll free 1-800-882-6789 Fax (503) 370-4383 CapitalPress.com