

890 Packing/ Processing Eq.

Used Super Sacks. Used once. Stovepipe Top: \$2. Opened Top: \$3. Salem, OR. 503-932-8598

893 Logging Equip.



Paramount Ironworks has new brush rakes. We can help your land clearing/clean up operations. The 8ft rake pictured will fit a variety of dozers and has 1"AR400 rippers, \$1995 and up. If you need something different, we offer custom fab & mobile welding. Let us know how we can help you. Eugene, OR. 541-321-3654

894 Sawmill Equip.

WANTED: Mobile Dimension, Mighty Might or Timber Champ Circular Sawmills. Any age/condition. Dead or Alive. Have Cash. Klamath Falls OR. 530-905-2250

896 Forklifts

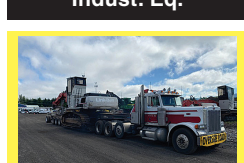


2016 Hyster H50CT 5000lb capacity (refurbished). 3 stage, side shift, rebuilt engine, new brakes, serviced and job ready. F.O.B. McMinnville, OR. \$12,500. Call/Text 503-550-7625 www.SpringHollowEquip.com



August Special: 2015 Hyster H50 (6,150 hours) 5000lb capacity. Refurbished. 3 stage, side shift, rebuilt engine, new brakes, serviced and job ready, \$9950. F.O.B. McMinnville, OR. Call/Text 503-550-7625 www.SpringHollowEquip.com

899 Heavy & Indust. Eq.



NWTL Inc Heavy Haul & Trucking Travis Dispatch 503-849-6867 Services: •Multi-Axle Lowboy •Heavy Haul •Heavy Equipment Recovery •Equipment Transport •Agriculture Equipment •Construction Equipment •Forestry Equipment •All Lower 48 States Hourly and Mileage Rates Available, Sandy, OR.



Dozer for Hire or Rent: Need a road, need a pond? CAT D6N XL dozer available. Call Jeremy. Central Oregon. 541-419-1871



Diesel Air Compressors, most are towable, a few skids, hours range from 130 to 3000, prices range from \$7,500 to \$12,500. Many to choose from. Overtime Equipment, LLC. 21338 Hwy 30, Filer ID. 83328. 208-734-3434

REPLACEMENT DECAL SETS

Construction, Forestry & Ag Equipment. Fast, Knowledgeable, Reliable Service. 215-536-5339 email: info@CustomServicesCompany.com Thousands of sets, Old & New, in our digital inventory. www.QuipCat.com

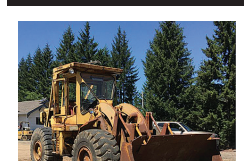
CASE INDUSTRIAL PARTS

We sell genuine, after market, and used CASE parts at discount prices nationwide. Call For Free Catalog.

CENTRAL EQUIPMENT

AFTER MARKET & USED PARTS Medford, OR (888) 593-8749

899 Heavy & Indust. Eq.



1969 CAT 966C Wheel Loader, asking \$17,500. Sandy, OR. Call Pepe: 503-544-3232; Call Pat: 503-407-9062

Jaw Crusher Plant 32"x42"

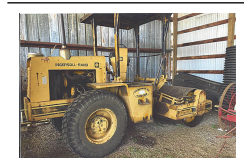
With a separate 32"x42" apron feeder. Both are portable with heavy duty hydraulic legs. Good tires, \$150,000. Oregon. 541-954-4808



2000 Ingersoll Rand 185 CFM air compressor with 4 KW generator. Skid mount. John Deere Diesel 50 Ft. of hose. Very clean well operating machine from a large California County, \$7900. Located in Twin Falls ID. Call 208-613-0050



Bomag 60" vibratory pad foot compactor with blade, \$16,500. Salem, OR. 503-362-3055



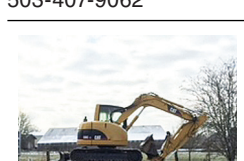
Ingersoll Rand 72" SMOOTH DRUM vibratory compactor, \$15,500. Salem, OR. 503-362-3055



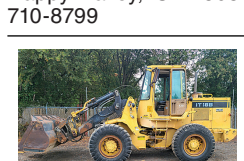
2004 CAT 330CL Excavator: Hydraulic Thumb, Quick Connect, 72" Muck Bucket, Asking \$59,950. Sandy, OR. Call Pepe: 503-544-3232; Call Pat: 503-407-9062



John Deere 590D Excavator: Auxiliary Hydraulics, Hydraulic Thumb, Hydraulic Coupler, Dig Bucket, asking \$31,950. Sandy, OR. Call Pepe: 503-544-3232; Call Pat: 503-407-9062



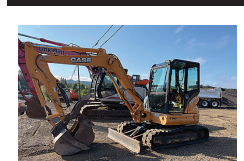
CAT 308C Excavator/trailer combo. Quick disconnect, blade, 3 buckets and rake. John Deere controls, 24' tilt deck trailer, \$54,500. Happy Valley, OR. 503-710-8799



1988 CAT IT18B Wheel Loader, Quick Change, Auxiliary Hydraulics, 94" Bucket, Meter Reads 4771 Hours, Asking \$32,500. Sandy, OR. Call Pepe: 503-544-3232; Call Pat: 503-407-9062

907 Nursery Equip. & Supplies

899 Heavy & Indust. Eq.

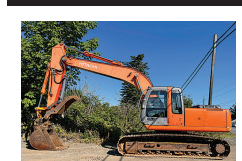


2013 Case CX55B Mini Excavator, 3 Buckets, Blade, Rubber Tracks, 5340 Hours, Asking \$47,500. Sandy, OR. Call Pepe: 503-544-3232; Call Pat: 503-407-9062

CLASSIFIED LINE ADS GET RESULTS

1-800-882-6789 CapitalPress.com

899 Heavy & Indust. Eq.



2006 Hitachi ZX200LC, Auxiliary hydraulics, thumb, hydraulic quick connect, A/C, Isuzu, 7,500 hours, Asking \$54,950. Sandy, OR. Call Pepe: 503-544-3232; Call Pat: 503-407-9062

"BEST FARM PAPER AROUND!"

Gerald Stanton • Granite Falls, Wash. Subscribe! Call 1-800-882-6789

902 Farm Equip. Parts

NEW & USED OLIVER & CLETRAC
Wheel & Crawler Parts Are Our Specialty
ZIMMERMAN OLIVER-CLETRAC
1450 Diamond Station Rd. • Ephrata, PA 17522
717-738-2573
Fax 717-733-3529
www.olivercletrac.com

BIG TRACTOR PARTS, INC.
~ GEARED FOR THE FUTURE ~

STEIGER TRACTOR SPECIALIST

- 1. We are your source for new & used Steiger drivetrain parts Series 1-9300 Series.
- 2. We rebuild Spicer manual transmissions, Fugli power shift transmissions, dropboxes & axle with ONE YEAR WARRANTY!
- 3. We now rebuild computer control boxes for Steiger tractors 1982-1999.

800-982-1769
www.bigtractorparts.com

COMBINE HEAVEN R.I.P.
Reasonable Implement Pricing
See Our Combine Dance on YouTube!



RECENT ARRIVALS
(2) JD 8820 II • JD 9610
(2) JD 9600 HILLSIDES
(3) IH 2188 • IH 1688 4X4

JD	NH
CTS	TR 96
9770 STS	TR 95
9660 STS	TR 85
9610	TR 75
9600	TR 70
9500	IH
9400	2188
8820	1688
8820 II	1680
7720	1680
7700	1666
6622	1660
6620	1640
6602	1480
6600	1460
6600SH	1440
4400	915
105	915
95EB	815
95 Late	715
95 Hillside	403

LOTS OF TRACTORS AND IMPLEMENTS TOO!

Nyssa Tractor & Implement

Celebrating 31 years in the agricultural machinery business.
Our yard has 5 miles of road, with machinery on both sides.
FREE Tours Given Daily.
Call Toll Free: **(833) 372-4020**
www.nyssatractor.com
sales@nyssatractor.com
Nyssa, OR

907 Nursery Equip. & Supplies

907 Nursery Equip. & Supplies

905 Antique Farm Eq. & Parts

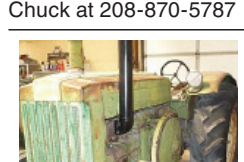
Caterpillar D6-9U, factory electric start, with glow plugs on all 6 cylinders, factory turbo-charger, factory 24 volt alternator, hydraulic pump with 6 outlets, 28" pads, 5 speed transmission, 2 reverse speeds, built in 1957, 63 years old, low hours on meter, \$5500 Weston, OR. 850-892-5766



1948 John Deere model D, electric start, good tires, good paint, Salem, OR. 503-393-1347



1947 John Deere B. (Barn find). Great shape, \$1450. Nampa, ID. Call Chuck at 208-870-5787



1945 John Deere. Electric start. PTO. \$3250. Nampa, ID. Call Chuck at 208-870-5787

907 Nursery Equip. & Supplies

USED NURSERY CONTAINERS:

Used, but reusable nursery containers. All sizes. Inventory changes daily. Call for current availability and prices. Sawyer Farms, Scio OR. 503-769-3417, juddsfarm@wvi.com (also wanted: used containers)

FRESH SAWDUST:

Consistently fair pricing. 9 Unit Loads Now Available Forest-Grove, OR. For pricing call 503-849-0216

911 Hay Equip.

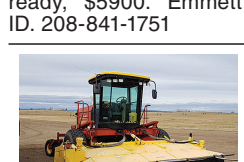
New And Used Parts: for all models New Holland bale wagons. **Largest Inventory in North America.** Sod Busters Sales, Polson, MT. 877-735-2108 or 406-883-2118

#1 Balewagons:

Buy, Sell, New Holland 2&3 wide self-propelled, pull-type models, parts, tires, manuals. Caldwell, ID. 208-880-2889 www.balewagon.com



Hay Rakes: John Deere 700, good condition, field ready, \$5900. Emmett, ID. 208-841-1751



New Holland HW-340 self propelled rotary sweeper. 2852 hours, 15" wide. Header updated, \$38,500. Call for details, Sisters, OR. 541-771-4970

Buying or Selling

Capital Press is here to help you!
1-800-882-6789
or FAX 503-370-4383
CapitalPress.com

907 Nursery Equip. & Supplies

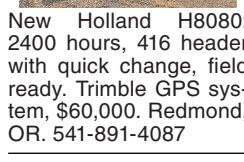
911 Hay Equip.

Large Supply of Rebuilt New Holland Bale Wagons: Also buying New Holland bale wagons. Sod Busters Sales, Polson, MT. 406-883-2118

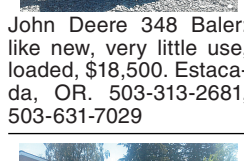
911 Hay Equip.



New Holland H8080: 2400 hours, 416 header with quick change, field ready. Trimble GPS system, \$60,000. Redmond, OR. 541-891-4087



John Deere 348 Baler: like new, very little use, loaded, \$18,500. Estacada, OR. 503-313-2681, 503-631-7029



Hesston 1459 Mower Conditioner. Close to new condition, \$8250. Estacada, OR. 503-313-2681, 503-631-7029

RCO Baits

Gophers • Squirrels Voles • Moles
Dealer Locator
1-800-214-2248
Harrisburg, OR 5219719-1

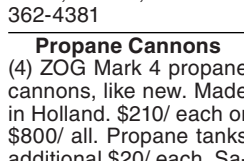
917 Orchard/Vineyard Equip.



400 gallon Orchard Master sprayer, fiberglass tank, \$1200, good condition, Salem, OR. 503-362-4381

Propane Cannons

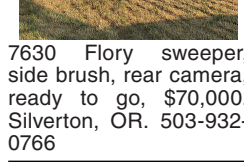
(4) ZOG Mark 4 propane cannons, like new. Made in Holland. \$210/ each or \$800/ all. Propane tanks additional \$20/ each. Salem, OR. 503-798-3993



Hazelnut Harvester: Weiss McNair 824. Recently rebuilt, \$12,000. Salem, OR. 503-932-7071



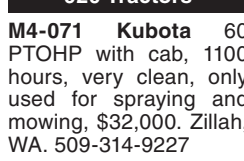
7630 Flory sweeper, side brush, rear camera, ready to go, \$70,000. Silverton, OR. 503-932-0766



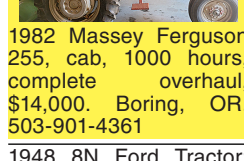
20FT Pruning Tower for rent with pruners. Self Propelled. \$250/ day. Amity, OR. 503-849-8100

920 Tractors

M4-071 Kubota 60 PTOHP with cab, 1100 hours, very clean, only used for spraying and mowing, \$32,000. Zillah, WA. 509-314-9227

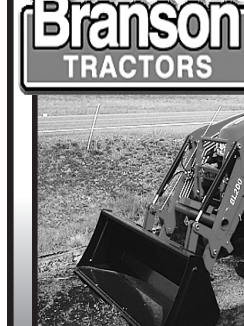


1982 Massey Ferguson 255, cab, 1000 hours, complete overhaul, \$14,000. Boring, OR. 503-901-4361



1948 8N Ford Tractor: everything works, converted to 12V battery, all new tires, stored inside for the past 15 years, \$2500. Boring, OR. 503-901-4361

Branson TRACTORS



24 - 80 hp., 4WD, Compact Syncro-Shuttle, Hydro 24, 28, 35, 47 hp

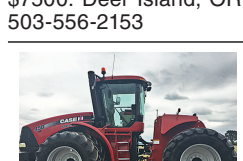
THE TRACTOR STORE

(541) 342-5464
5450 W. 11th, EUGENE, OR

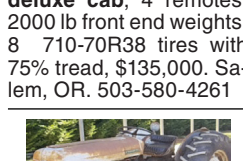
920 Tractors

LOOK!

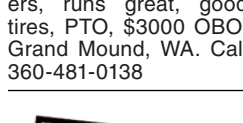
2910 Ford Tractor with Loader: low hours, \$7500. Deer Island, OR. 503-556-2153



2014 Case IH Steiger 450 tractor, 3650 hours, deluxe cab, 4 remotes, 2000 lb front end weights, 8 710-70R38 tires with 75% tread, \$135,000. Salem, OR. 503-580-4261



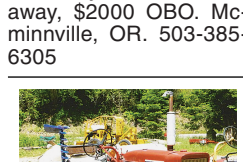
Ferguson 35: two owners, runs great, good tires, PTO, \$3000 OBO. Grand Mound, WA. Call 360-481-0138



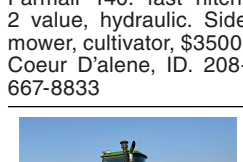
John Deere 650 Compact tractor, vineyard style, with front loader and spreader, used, still works, you must haul away, \$2000 OBO. McMinnville, OR. 503-385-6305



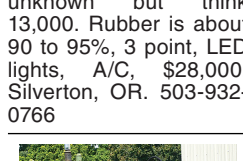
Farmall 140: fast hitch, 2 valve, hydraulic. Side mower, cultivator, \$3500. Coeur D'alene, ID. 208-667-8833



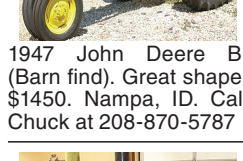
8770 John Deere, hours unknown but think 13,000. Rubber is about 90 to 95%, 3 point, LED lights, A/C, \$28,000. Silverton, OR. 503-932-0766



1947 John Deere B. (Barn find). Great shape, \$1450. Nampa, ID. Call Chuck at 208-870-5787



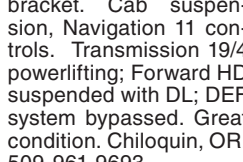
1945 John Deere. Electric start. PTO. \$3250. Nampa, ID. Call Chuck at 208-870-5787



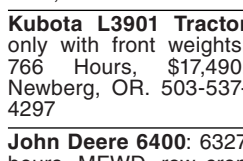
New Holland T8.275 Tractor with Duals. Approximately 2750 hours; original owner. 1 pair Rr 500lb weights, 22 front weights with bracket. Cab suspension, Navigation 11 controls. Transmission 19/4 powerlifting; Forward HD suspended with DL; DEF system bypassed. Great condition. Chiloquin, OR. 509-961-9693



WANTED: IH 1086 or IH 1066, need power unit, for PTO ditch pump. Long Ranch, Klamath Falls, OR. 541-891-9809



Kubota L3901 Tractor only with front weights. 766 Hours, \$17,490. Newberg, OR. 503-537-4297



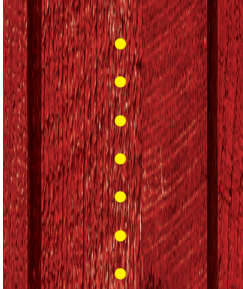
John Deere 6400: 6327 hours, MFWD, row crop axle, 640 loader, good condition, \$37,500. Mount Angel, OR. 503-932-8693

PLACE LINE CLASSIFIED ADS TOLL-FREE FROM ANYWHERE!

1-800-882-6789

"I had calls from New York, Minnesota, Idaho & Texas before the paper came out Friday! People are obviously using your website!"

Mickelsen Dairy, Inc. Winlock, WA



CALL BY 3PM MON - FRI AND GET YOUR LINE AD ONLINE IN 24 HOURS!
(On approval)

Your line ad will also run in the next available print edition of Capital Press.

Capital Press
800-882-6789
CapitalPress.com

899 Heavy & Indust. Eq.

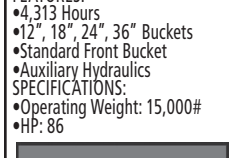


Case 580SL Backhoe - \$29,500
FEATURES:
•4,313 Hours
•12", 18", 24", 36" Buckets
•Standard Front Bucket
•Auxiliary Hydraulics
SPECIFICATIONS:
•Operating Weight: 15,000#
•HP: 86



John Deere 50D Mini Excavator - \$29,500
FEATURES:
•Thumb
•Auxiliary Hydraulics
•24" Bucket
SPECIFICATIONS:
•Operating Weight: 10,500#
•HP: 39

QUALITY USED EQUIPMENT & ATTACHMENTS



American Tractor

REPLACEMENT DECAL SETS

Construction, Forestry & Ag Equipment. Fast, Knowledgeable, Reliable Service. 215-536-5339 email: info@CustomServicesCompany.com

CASE INDUSTRIAL PARTS

We sell genuine, after market, and used CASE parts at discount prices nationwide. Call For Free Catalog.