

525 Commercial Property

Processing Plant, Warehouse, Offices. Property includes 5.14 Acres and 77,000sqft of buildings and office space. Hot pack processing line, warehouse, and offices. North of Salem, OR. Close to I-5. \$3,000,000 Email: farmforlease18@gmail.com

540 Recreational Property

Amazing opportunity to own 235 timbered acres on Willapa Bay, WA. Own your own recreational oceanfront paradise with breathtaking bay and ocean views backdropped by mountain ranges. Abundant wildlife include elk and deer, \$2,499,900. Call Debra Cromer 509-990-8733. Realty Executives Grant Co

546 Rentals, Leases



ADVERTISING IN CAPITAL PRESS IS A CASH COW!
CALL TODAY TO PLACE YOUR AD
1-800-882-6789
FAX (503) 370-4383
CapitalPress.com

546 Rentals, Leases

FOR LEASE Vegetable Processing Facility and 2 Storage Buildings Hermiston Oregon. Processing Facility approximately 58,000 sq. ft. with office, lunch room, receiving area, packing room, two large cold rooms, shop/parts room, staging room, shipping/ loading dock for three (3) trucks, scales); 2 Storage Facilities (30,000 sq. ft. facility with dehumidification; 60,000 sq. ft. facility with computerized refrigeration and dehumidifiers), private railroad spurs for transportation, water rights (well), septic, electricity, water lagoon for waste water. Will possibly rent processing facility and storage facilities separately. Contact Larry Blunck at 503-656-1654 or larry@bluncklaw.com

Looking for a farm or ranch? VISIT FarmSeller.com

561 Ranches

for RANCHES & FARMS call Crater Lake Realty, Inc.
Linda L. Long, Broker
541-891-5562
Chiloquin, OR
linda@craterlakerealtyinc.com • craterlakerealtyinc.com

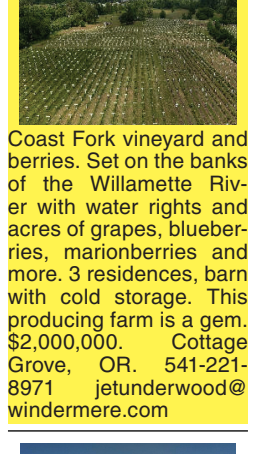
TRY CAPITAL PRESS CLASSIFIEDS CALL TODAY! 1-800-882-6789
FAX (503) 370-4383 • CapitalPress.com

IDAHO RANCHES & FARMS WE SPECIALIZE IN TAX-DEFERRED EXCHANGES

Robert Jones Realty
ALC ACCREDITED LAND CONSULTANT
Bob Jones, Broker 208-308-6060
Mark Jones, Assoc. Broker 208-308-3030
208-733-0404
1766 Addison Avenue E, Twin Falls, ID 83301
www.RJREALTY.com 5256013-1

561 Ranches

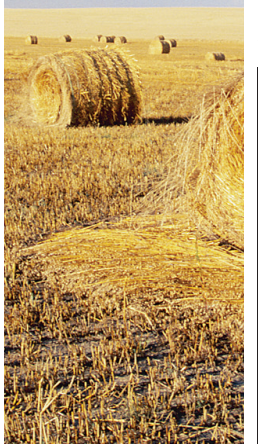
Looking For A Relaxed Off Grid Lifestyle? This Property Is A "Must See"! 2544 Deeded Acres with 283 Irrigated & 2260 BLM. Run 75 to 100 Head Of Cattle, Prior 18 Years Guest Ranch Sleeps 12, Hunt Trophy Mule Deer, 8 Ponds, Home, Shop, Barn, Stalls, Greenhouse, Hay Storage. 30 Miles From Lakeview, OR. \$1,999,000 RMLS #21237893 541-575-2617 www.dukewarnerrealestateoregon.com ljh@ortelco.net



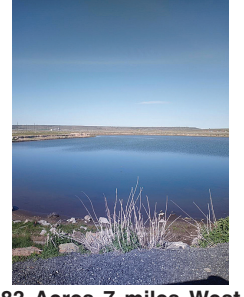
Coast Fork vineyard and berries. Set on the banks of the Willamette River with water rights and acres of grapes, blueberries, marionberries and more. 3 residences, barn with cold storage. This producing farm is a gem. \$2,000,000. Cottage Grove, OR. 541-221-8971 jetunderwood@windermere.com

OUR WESTERN ROOTS RUN DEEP
Up-to-date news of ag in the west

- Newspaper
- E-editions
- E-newsletters
- Mobile
- Website



Capital Press
EMPOWERING PRODUCERS OF FOOD & FIBER
1-800-882-6789
Subscribe today.
800-781-3214
CapitalPress.com



83 Acres 7 miles West of Burns, OR. 1884 water right on entire parcel. With 30 acres of Native Meadows. Water supplied from numerous year round ground springs & 5.5 acre spring fed pond stocked with bass & blue gill. Best duck & goose hunting area in Harney County. Year round gravel road to property. Excellent homesite overlooking creek. There is a domestic well & pumphouse. Plus 2 small outbuildings on property. Broker owned, \$360,000. Possible Owner Financing. Call for more details. 541-589-2068

PUBLISHER'S NOTICE
All real estate advertising in this newspaper is subject to the Fair Housing Act which makes it illegal to advertise "any preference, limitation or discrimination based on race, color, religion, sex, handicap, familial status or national origin, or any intention to make any such preference, limitation or discrimination." Familial status includes children under the age of 18 living with parents or legal custodians, pregnant women and people securing custody of children under 18.
This newspaper will not knowingly accept any advertising for real estate which is in violation of the law. Our readers are hereby informed that all dwellings advertised in this newspaper are available on an equal opportunity basis. To complain of discrimination call HUD toll-free at 1-800-669-9777. The toll-free number for the hearing impaired is 1-800-927-9275.

WANTED

Bird Hunting Leases 2021 Season
Pheasant • Duck • Quail



Eastern Oregon, Southwest Idaho.
Call Brad 208-863-2705; Email: bbower@eaglefp.net

CONTEMPLATING YOUR NEXT MOVE?

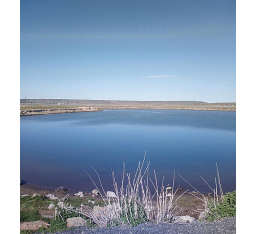
Consider that more buyers are searching web listings. Call us today! Our sales reps are waiting to help you put your ad online today. Or post your ad online 24/7/365.

Capital Press
EMPOWERING PRODUCERS OF FOOD & FIBER
800-882-6789
CapitalPress.com

BEST SELLERS ...
"...Sold everything in the herd but a couple of old bulls."
Kester Ranch, Cottage Grove, OR
Call 1-800-882-6789 and sell too!

KNIFE LAND

Timbered Land - OR
Timbered land parcels in NE Oregon ranging in size from 795± to 9,772± acres, all with great hunting and recreation. \$1,140,000 - \$9,319,000
Cascade Timber Ranch NEW - ID
640± acres with meadows, timber, a creek, & ponds. \$5,350,000. Or purchase 320± acres \$2,970,000.
Carey Farm - New - ID
30± air miles south of Sun Valley. 436± acres has 250± acres irrigated by 5 pivots and 3 wheel lines, 1,288± sf home. Zoned for 1 home per acre, or 1 home per 10 acres. May work well to develop. BTVAD \$3,500,000
208.345.3163 knipeland.com



83 Acres 7 miles West of Burns, OR. 1884 water right on entire parcel. With 30 acres of Native Meadows. Water supplied from numerous year round ground springs & 5.5 acre spring fed pond stocked with bass & blue gill. Best duck & goose hunting area in Harney County. Year round gravel road to property. Excellent homesite overlooking creek. There is a domestic well & pumphouse. Plus 2 small outbuildings on property. Broker owned, \$360,000. Possible Owner Financing. Call for more details. 541-589-2068

564 Farms



Wonderful little hobby farm with Cascade Mountain View's, Metolius, OR. Close to town, schools and hospitals. The property offers 6+ irrigated acres, a long driveway leading to the fenced and cross fence pastures. This well loved and cared for manufactured home features three bedrooms two baths. 1040sqft. with a large wraparound deck for plenty of outdoor entertaining space. The large bay shop features a loft for extra storage or flex space. Bring your toys and animals! Offered at \$562,000. Rachel Bare, broker, Windermere Central Oregon Real Estate 541-604-0085; rbare@windermere.com

FOR SALE BY OWNER

Farm for Sale by Owner: Older Dairy Farm in the heart of the Lower Yakima Valley, WA. 40 acres, 1 older home, plus 1 older mobile home. Dairy facilities and homes, 22 Acres. Remaining 18 acres wheel line irrigated, currently in Alfalfa. Sunnyside Valley Irrigation District water rights. Currently being used as a feed lot. Corrals have room for approximately 600 head. \$1,200,000. 509-840-3375; danvanboven@yahoo.com

"BEST FARM PAPER AROUND!"
Gerald Stanton • Granite Falls, Wash.
Subscribe! Call 1-800-882-6789

564 Farms

564 Farms

564 Farms

564 Farms

564 Farms

564 Farms

FarmSeller FARMSELLER.COM Find the land, farms, and ranches you're looking for

DIRECTORY OF PREMIUM AGENCY MEMBERS

 Brook Havens Cascade Sotheby's International Realty 541-604-0788	 Patty Cordoni Cascade Sotheby's International Realty 541-771-0931	 Pam Mayo-Phillips Cascade Sotheby's International Realty 541-480-1513	 Linda Long Crater Lake Realty Chiloquin, OR 541-783-2759	 Jerry Franklin Eastern Oregon Realty John Day, OR 541-575-2121
 Tim Cobb Farmland Company Spokane, WA 509-624-4408	 Robert Bacon Fischer Nicholso Realty Klamath, OR 541-545-1510	 Stacey Moyles Century 21 Showcase Klamath Falls, OR 541-882-2121	 Lisa Johnson Horsepower Real Estate Junction City, OR 541-510-4601	
 John Lee Lee Real Estate Aumsville, OR 503-245-9090	 Paul Terjeson Oregon Farm Brokers Corvallis, OR 503-999-6777	 Jason Nash Keller Williams Realty Southern Oregon 541-591-5195	 Steve Helms Keller Williams Farm & Ranch Albany, OR 541-979-0118	 Curtis Hitchcock Knipe Land Company Boise, ID 208-866-2825
 Janey Knipe Knipe Land Company Boise, ID 208-345-3163	 John Knipe Knipe Land Company Boise, ID 208-345-3163	 Tom Gill Knipe Land Company Mountain Home, ID 208-860-0776	 Julie Mansfield-Smith Mossy Oak Properties Copper Creek Land Co. Kimberly, OR 541-519-6891	 Jake Polvi POLVI Bend, OR 541-410-3050
 John Collins Ranch-N-Home Realty La Grande, OR 541-963-5450	 Judy Willis Real Estate Associates Joseph, OR 541-432-4060	 Ken Wick Real Estate Associates Joseph, OR 541-432-4060	 Mark Jones Robert Jones Realty Twin Falls, ID 208-733-0404	 Kirk Makin Ruby Peak Realty Joseph, OR 541-432-3131
 Claressa O'Connor Timberline Realty Joseph, OR 541-432-1234	 Jim Whitney Whitney Land Company Pendleton, OR 541-278-4444	 Todd Longgood Whitney Land Company Pendleton, OR 541-278-4444	 Robert Carnahan Artisan Real Estate Associates Dufur, OR 503-313-0419	

CALIFORNIA
HOLLISTER SAN BENITO REALTY 831-637-5563

IDAHO
BOISE KNIPE LAND 208-345-3163
POCATELLO INTERMOUNTAIN LAND EXCHANGE, INC. 208-232-8306
STAR FLINDERS REALTY & EXCHANGE 208-334-3840
TWIN FALLS ROBERT JONES REALTY INC. 208-733-0404

MONTANA
BILLINGS ROCKY MTN. RANCH REAL ESTATE 406-259-6666
MISSOULA STELLING RANCH & LAND 406-728-9200

NEVADA
FALLON BERNEY REALTY LTD. 775-426-8023

OREGON
ALBANY KELLER WILLIAMS FARM & RANCH 541-979-0118
AUMSVILLE LEE REAL ESTATE 503-245-9090
BAKER CITY AGRILANDS REAL ESTATE 541-853-1212
INTERMOUNTAIN REALTY 541-523-4434
BEND CASCADE SOTHEBY'S INTERNATIONAL REALTY (PAM MAYO AND BROOK HAVENS) 541-923-1376
CASCADE SOTHEBY'S INTERNATIONAL REALTY (PATTY CORDONI) 541-771-0931
COLDWELL BANKER BAIN 541-280-4372
FAY RANCHES 541-419-0770
POLVI 541-410-3050
BONANZA FISHER NICHOLSON REALTY, LLC 541-545-1510
BURNS JETT BLACKBURN REAL ESTATE 541-573-7206
CHILOQUIN CRATER LAKE REALTY 541-783-2759
CORVALLIS OREGON FARM BROKERS 503-999-6777
DAYVILLE DUKE WARNER REALTY 541-987-2363
DUFUR ARTISAN REAL ESTATE ASSOCIATES 503-313-0419
JOHN DAY EASTERN OREGON REALTY 541-575-2121
JOSEPH REAL ESTATE ASSOCIATES 541-432-4060
TIMBERLINE REALTY 541-432-1234
RUBY PEAK REALTY 541-432-3131
JUNCTION CITY HORSEPOWER REAL ESTATE 541-510-4601
KIMBERLY MOSSY OAK PROPERTIES CUPPER CREEK LAND CO. 541-519-6891
KLAMATH FALLS KELLER WILLIAMS REALTY SOUTHERN OR 541-591-5195
CENTURY 21 SHOWCASE REALTORS, INC. 541-882-2121
LA GRANDE RANCH-N-HOME REALTY 541-963-5450
LAKEVIEW HIGH COUNTRY REAL ESTATE 541-417-0250
MEDICAL SPRINGS AGRILANDS REAL ESTATE 541-853-1212
NORTH BEND CADWELL REALTY GROUP 541-740-9854
RE/MAX SOUTH COAST 541-290-1850
ONTARIO TOM PHILLIPS AGENCY 541-889-8401
PENDLETON WHITNEY LAND CO. 541-278-4444
SALEM AGRI-BUSINESS REAL ESTATE 503-371-6409
SILVERTON HARCOURTS NW OREGON REALTY GROUP 503-873-8600
WILSONVILLE WOLF PROPERTIES NW 503-682-1789

TEXAS
DIMMITT SCOTT LAND CO. 800-933-9698

WASHINGTON
BURLINGTON RE/MAX TERRITORY NW 360-755-9494
CHEHALIS CENTURY 21 LUND REALTORS 360-748-8619
SPOKANE FARMLAND COMPANY 509-624-4408
TOLEDO RE/MAX PREMIER GROUP 360-520-4810