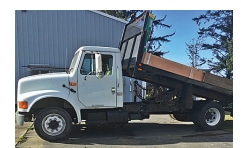


210 Trucks



1991 International Diesel Truck: 14ft flatbed dump, \$8500. Brookings, OR. 541-469-2068

210 Trucks



1999 IHC 2674 Tandem axle dump truck. 15 yard bed. Cummins N-14 Diesel 13 speed transmission. AC, PS, CC, PW, Jake brake. Side Lock differentials. 18K. Front Axle. Hendrickson spring rears. 138,000 ACTUAL MILES and 5900 HOURS. Former State DOT Truck. Runs, drives, and operates like new. Well maintained. Records available, \$24,900. Located in Twin Falls ID. Call 208-613-0050

210 Trucks



1996 IHC 4900 15ft. flatbed truck with removable 4 ft. stake sides and 3000 Lb. liftgate. T444E, 7.3 L. Turgo Diesel with 5 and 2 trans. 103,000 ACTUAL MILES. Brand new radial tires. 26,000 GVW. NO CDL. One owner truck from Cal Fire. Clean, well maintained and operates like new. \$14,900. Located in Twin Falls ID. Call 208-613-0050

210 Trucks

R & G MACHINING AND ENGINE PARTS
COMPLETE DIESEL MACHINE SHOP AND TRUCK REPAIR
MULINO, OREGON • SHOP: 503-829-6038 • NATIONWIDE: 1-800-823-6038
We Absolutely, Positively Have The Best Remanufactured Engines Available Anywhere!
Huge Inventory • Expert Technical Assistance

ENGINES INSTALLED PRICING
Incidentals extra, Exchange 100,000 mile warranty when we install!
Depending on applications:
GM 6.2 - 6.6L installed.....\$6995
Ford 6.4 P/S installed.....\$12,750
Ford 94-03 7.3 P/S installed.....\$7900
Cummins 88-02 5.9 installed.....\$8400
Cummins 03 & Up, 5.9 C/R, installed.....\$9450
Cummins 6.7, installed.....\$10,250

- We grind and weld crankshafts and camshafts
- We weld blocks & cylinder heads
- Exchange connecting rods or connecting rod kits
- Diesel or Gas engine kits
- Cylinder head or block O-ringing

All Years & Models: Turbos, Injectors, High Pressure Oil Pumps, Fuel Injection Pumps, Oil Coolers, Computers - Ford, GM Chrysler

REBUILT DIESEL L/B ENGINES

CUMMINS	PERKINS & ISUZU
3.9-4BT.....\$4,150	Starting at.....\$5,995
5.9 '88-'02.....\$4,250	MITSUBISHI & NISSAN
5.9 '03 & up.....\$4,650	Starting at.....\$5,995
6.7 C/R.....\$4,950	YANMAR & KUBOTA
FORD	Starting at.....\$4,495
6.0 P/S.....\$5,345	BOBCAT & SHIBAURA
6.4 P/S.....\$6,045	Starting at.....\$3,995
6.7 P/S.....\$7,150	DOOSAN & TAKEUCHI
6.9-7.3 IDI.....\$4,650	Starting at.....\$5,995
7.3 P/S.....\$4,650	MERCEDES
GM	Starting at.....\$8,995
6.6 Duramax.....\$6,050	HINO & IVECO
6.2-6.5.....\$4,395	Starting at.....\$5,995
JOHN DEERE & IH	Starting at.....\$5,995
Starting at.....\$5,995	CATERPILLAR & HYUNDAI
KOBELCO, KOMATSU, HITACHI	Starting at.....\$5,995



CUMMINS 5.9 MAGNUM

IN BUSINESS SINCE 1975.

OVER 250 ENGINES & 450 CYLINDER HEADS IN STOCK!
We have a complete line of import diesels and obsolete diesels for your mini excavators or skidsteers. We work and repair all brands!

NEED ENGINE PARTS, GAS OR DIESEL - CHECK IT OUT:
WWW.EBAY.COM/STR/GRUMPYSPERFORMANCECENTER
GRUMPYSPERFORMANCE@GMAIL.COM

210 Trucks



1991 GMC TopKick with 15,000lb. crane. 34ft. reach. 17,000 ACTUAL MILES. 3116 CAT Diesel and 5&2 transmission. One owner County truck from Southern California that has been well maintained. Very clean and runs, operates and drives like new. MILES ARE CORRECT! \$16,900. Located in Twin Falls ID. Call 208-613-0050.

210 Trucks



1995 International 4900 diesel DT466. All wheel drive, 6x6, pole auger lineman truck, 32,000lb. capacity, Altec D3060t, 3 stage, seat controls, crane, automatic transmission, 4 outriggers, rear hydraulic winch, 96519 miles \$29,000. Gaston, OR. 503-789-3726

210 Trucks



1994 IHC 2674 with 87ft. reach Altec AM855 with elevator and overcenter. 83,000 ACTUAL MILES. DT466 Diesel. 13 speed transmission, 2 man bucket, full rotation with 700 Lb. capacity and 2000 Lb. material handler. Truck is a one owner that was certified when taken out of service. Well maintained with no leaks, is very clean and runs operates and drives like new. WORK READY, \$29,000. Located in Twin Falls ID. Call 208-613-0050

210 Trucks



2010 IHC WorkStar 7600 tandem axle with 24ft. reefer van and SUBZERO ThermoKing Diesel reefer unit. Roll up rear door with 6600 LB Lift-Gate. Cummins ISM Diesel 410HP. 10 Speed. Fuller Transmission. PS, AC, CC, PW, Jake. Locker rears. Near new 11/22.5 radials. One owner unit from the California Dept. of Education. This truck is in near new condition throughout. Beautiful and work ready, \$44,900. Located in Twin Falls ID. Call 208-613-0050

210 Trucks



2007 Sterling 9500 with Grizzly 267C LOG LOADER. 2200 HOURS. 26,700Lb. lift capacity, 360 non continuous rotation. 44" grapple with 25ft. reach. 12.8L Diesel. 430HP. 8LL Eaton transmission, 64,000 GVW. 90% 11/22.5 radials. Truck came from the State of Arizona Power Authority and has had fantastic taxpayer maintenance. Truck looks, operates and drives like a new one, \$49,000. Located in Twin Falls ID. Call 208-613-0050.

210 Trucks



1992 Ford F800 SEWER JETTER TRUCK. 2003 model Sewer Equipment of America Jetter system. 2000 gallon water tank. 43,000 ACTUAL MILES on truck. 6 cylinder Diesel. Allison transmission. Near new radials. Exceptionally clean one owner former City truck that runs drives and operate like new, \$12,900. Located in Twin Falls ID. Call 208-613-0050

210 Trucks



1994 GMC TopKick Single Axle dump truck. 25800GVW. CAT 3116 Diesel Allison Automatic. PS, cc. 5 yard bed. Like new radials. 143,000 ACTUAL MILES. Absolutely immaculate rust free truck from the California DOT. Looks runs and drives like it's brand new. \$19,900. Located in Twin Falls ID. Call 208-613-0050

To Sell a Little, To Sell a Lot... Classified Line Ads 1-800-882-6789 CapitalPress.com

A picture is worth a 1,000 words

Add a full color photo to your print and online ad.

Capital Press
800-882-6789
CapitalPress.com

POWER FLEET & COMMERCIAL SALES
MEDIUM DUTY DEALER

2021 Chevrolet Silverado 2500HD 2WD Work Truck
Stock #24337

Call for your business preferred price!

Jim Church 503-910-7784
Delana Johnson 503-769-7100
Brian Heinrich 503-504-3629
Ryan Church 503-877-7102



CHEVROLET BUSINESS ELITE
WWW.POWERAUTOGROUP.COM
503-769-7100

CLASSIFIED ADS SELL! Advertise Today!
1-800-882-6789 • CapitalPress.com

CLASS 8 TRUCKS
509-534-9088

1997 International 2574, Cummins, Jakes, 15-sp., Walking beam, 20K front axle, double frame, low miles, great feed lot truck.....CALL

1997 Freightliner FLD120, Detroit S60 12.7, 13-sp., walking beam, drop axle, double frame.....\$39,900

FOR RENT!

A-Trains available FOR RENTAL!
Daily, Weekly, Monthly Rates. Reserve yours today! Call Scott

2001 Volvo VNL
Day cab, Detroit 12.7, 430Hp, A/C, Jakes, auto shift trans., 3.90's, double lockers.....\$24,900

2007 International 9200 CAT C13, 410 Hp, 10 spd., auto shift, rear diff. lock, A/C, engine overhaul history.....\$27,900

Ford F900 Grain Truck
18' bed, 60" racks, tandem walking beam, diesel, 13 speed.....\$19,900

LOVELL Truck Sales 50th ANNIVERSARY

1994 Freightliner 4-axle transfer dump, C-12 CAT, 8 LL trans, Chambers susp., 46k rears, 14,600 front, 4-axle transfer trailer, call for more details.....\$29,500

1991 Kenworth T-800 dump truck, Cummins Big Cam IV, 13 spd., walking beam susp., 14' box, 2 spd. rear ends\$18,500

(2) 1995 Peterbilt 378 SB dump trucks, Cummins N-14e, 13 spd., walking beam susp., 14' box, 2 spd. rear ends, set up to pull pump trailer.....\$24,500 each

1996 Wabash 45' reefer trailer, Thermo King SB3 SR reefer, rail gate \$5,500 Also, 2001 Great Dane 48' reefer trailer. Carrier Phoenix reefer (non-working), nice rail gate \$5,500

2015 Freightliner 3-axle day cab, DD 13 470HP, Fuller 10-spd., 186" WB, PS, A/C, cruise, engine brake.....\$34,500

2006 Volvo VNL 3-axle day cab, Cummins 15X 400Hp, Fuller 10-spd., engine brake, PS, A/C, CC\$14,500

LOVELLTRUCKSALES.COM
LovellTruck@canby.com

1-800-451-0012
(503) 266-5886
FAX (503) 266-6903

680 SW 1st Ave (Hwy 99 E) Canby, OR

210 Trucks



1976 International 1600 10 wheeler, 20ft steel bed with hoist, 478 gas engine, very good condition, \$12,500 OBO. Toppenish, WA. 509-728-5000

210 Trucks



2005 IHC Paystar 5500i tandem dump truck. 14ft. Stainless Steel dump bed with 28in. live chain floor with removable conveyor cover and regular tailgate with metered gate discharge. Cummins ISX 435HP Diesel. Eaton 13 speed. PS, AC, CC, Jake. Brand new 11/22.5 radials. Bed alone is \$70K new. One owner former State truck that is in like new condition. Well maintained! \$36,900. Located in Twin Falls ID. Call 208-613-0050

210 Trucks



2004 IHC 7400 Dump Truck with DT530 Diesel, 300HP. Eaton 10 speed Transmission. 37K. GVW. AC, Cruise, Jake brake. Plumbed for trailer. 70% 12/22.5 radials. One owner former State agency. Very clean and well maintained. Ready to work, \$19,900. Located in Twin Falls ID. Call 208-613-0050

211 Pickups



1991 GMC MOBILE OFFICE 26' TRUCK. Cabinets, desks. Nice stairwell entry. Toilet, sink, microwave, refrigerator. Commercial AC unit powered by a 10 KW genset. 30,000 ACTUAL MILES. 427 V8 gas with Allison Automatic. PS, AC, CC. Former Municipal Command Center. Immaculate and mechanically perfect, \$14,900. Located in Twin Falls ID. Call 208-613-0050

210 Trucks



2001 IHC 4900 single axle dump truck. 7 to 8 yard. DT466 Diesel. Allison 6 speed. Automatic. PS, AC, CC. 150K. ACTUAL MILES. Near new 11/22.5 radials. Very clean and well maintained former State truck that is RUST FREE and work ready, \$18,900. Located in Twin Falls ID. Call 208-613-0050

216 Vans



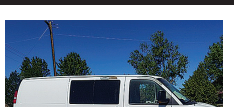
2013 Chevy 2500hd, new rebuilt transmission, 228,000 miles, 6 1/2' flatbed, \$11,000 Silverton, OR. 503-932-0766

222 Truck/ Auto Parts & Accessories



Perfect for forest fire suppression
1982 Hillsboro custom built liquid transfer, 7' upper deck, 16' lower deck, 8'x5'D steel tank, Balboa pump, Velcon 10-30 filter.....\$5,950

222 Truck/ Auto Parts & Accessories



2009 GMC Savana 3500 WORK VAN with DURAMAX DIESEL. Allison Automatic. AC, PS, PW, CC. Divider wall. Near new Radial Tires. Spotlessly clean and runs and drives like new. Was used to transport documents. Freeway use only. One owner and work ready, \$6900. Located in Twin Falls ID. Call 208-613-0050

222 Truck/ Auto Parts & Accessories



2011 Freightliner tandem axle tractor, Detroit DD13 12.8L/500 Hp, 10-spd., 176" WB.....\$19,500

CUSTOM FABRICATION

We can meet your needs!
541-447-4555
PRO-LINE
FABRICATION
Prineville, OR 5223916-1

222 Truck/ Auto Parts & Accessories



RATCO
Parts Gear Units Rebuilding Machining
541-747-2849

YOU'RE THE BOSS!

We have been rebuilding and repairing differentials and transmissions for over 45 years. Our experience, our work ethic, and our relationship with our customers sets us apart from the rest. We talk to you about your unit and discuss options. Sometimes, just an inspection to know the gears are in good order is all that is needed. We have reman units on site...Ratco built! We also have the ability to order new units at competitive prices. When we talk to you about your differential or transmission, we are working with you to keep you informed of what might be needed. You are in charge and that's exactly how we like it. We want you on the road doing what you need to do. We are happy to have you call us to talk about your unit or visit the shop. It's the experience and customer appreciation.....and it makes all the difference.

TRUCK GEAR SPECIALISTS

3620 Olympic Street
Springfield, OR | 541-747-2849
5221424-1

We consistently try to put your products in front of the widest possible agricultural audience and just like these customers tell us... it works!

- Thank you. I could have sold 4 or 5 horses instead of one. Had a lot of response from my ad. *Keith Chadwick, Caldwell, ID*
- We had excellent results. Thanks! *Gary & Mary Overmyer, Harrington, WA*
- I am sooo impressed! We placed an ad on Monday and by Friday the tractor was sold! *Bill Seefried, Mackay, ID*
- Very good response from your readers. I sold 7 of 10 items for over \$60,000. Thanks! *Lou Siegmund, Stayton, OR*
- We have Piedmontese cattle and have advertised in national magazines for our stock but we get the most and best response from Capital Press. *Doug Doornink, Sweet Home, OR*
- I advertised Christmas tree farms for sale 2 years in a row with immediate results. *Mike Wheelock, Elbe, WA*
- Thank you! Sold promptly to a man from Idaho. We'll use you again! *Orval Aebi, Dallas, OR*
- We have gotten great results from the ad we placed in your paper. Thank you. *CE Brakett Cattle Co., Rogerson, ID*

Capital Press EMPOWERING PRODUCERS OF FOOD & FIBER

Call to place your ad today!
800-882-6789 • CapitalPress.com