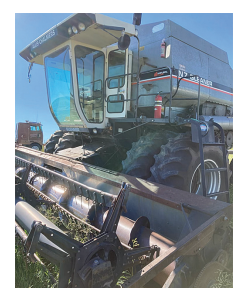


923 Farm Equipment



1978 Gleaner N7 Combine, Pea and Wheat headers, very good condition, \$2800. Tekoa, WA. 509-284-7913



1988 Littau side row harvester: Volkswagen diesel, 32" tunnel, serviced by Littau, \$27,000. Albany, OR. 541-740-4480



Portable Toilet Trailers GGAP Compliant Single or Double Trailers B and L Fabrication, LLC 503-308-1870 www.BNLFAB.com Salem, OR.

JOHN DEERE 9660 walker combine with MaDon pickup header. Excellent condition, \$77,500 OBO. Molalla, OR Call/ text 503-201-2777

2004 GMC 6500 Schwartz rollback bed with winch, like new, less than 8000 miles, Allison automatic transmission, CAT diesel motor, \$28,000 OBO. Gales Creek, OR. 503-357-9775



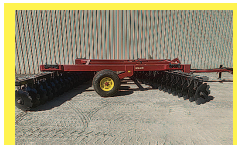
Equipment Seat Covers Fits: Tractors, Forklifts, Loaders, Backhoes, Skid Steers, Excavators, Semi Trucks. More. 541-401-5933 EquipmentSeatCovers.com



Pixall Beanstalker Bean Picker, \$19,500. St. Paul, OR. 503-932-8618



NEW IA Hydraulic Box Scraper with hydraulic tilt  
•LD 7ft. \$2,395  
•LD 8ft. \$2,595  
•LD 10ft. \$2,795  
•LD 12ft. \$2,995  
•HD 8ft. \$3,995  
•HD 10ft. \$4,495  
•HD 12ft. \$4,995  
•HD 14ft. \$5,395  
Bend, OR. 541-548-7185 mtcsales.net



NEW IA Heavy Duty Offset Wheel Discs. Scraper kit, EZ adjust gang angle, split gang axles, 26" notched blades front and rear.  
•9ft. \$12,400  
•10ft. \$13,400  
•11ft. \$13,900  
•12ft. \$14,400  
•13ft. \$14,900  
•14ft. \$17,900  
•15ft. \$18,900  
•16ft. \$19,900  
•18ft. \$21,900  
8ft., 22ft.  
8,000 lbs. Introductory pricing. Order NOW!  
Bend, OR. 541-548-7185 mtcsales.net



NEW IA Subsoilers 26" Clearance  
•3 Shank \$2,995  
•5 Shank \$3,795  
•7 Shank \$4,895  
Gauge Wheel Set, Add \$995.  
•HD Subsoilers with Dual Gauge Wheels. Weight 4,500 to 5,500 lbs. 30" Clearance.  
•7 Shank \$11,995  
•9 Shank \$12,995  
•11 Shank \$13,995  
Bend, OR. 541-548-7185 mtcsales.net

923 Farm Equipment



NEW IA Super Duty Offset Wheel Discs. EZ Adjust Gang Angle. 30" notched blades front and rear, adjustable scraper kit, 2" gang shafts, split gang shafts, high clearance, 9,000 to 12,000 lbs.  
•12ft \$31,900  
•14ft \$33,900  
•16ft \$35,900  
•21ft \$40,900  
•10ft to 25ft Bend, OR. 541-548-7185 mtcsales.net



NEW IA Pasture Aerators: Bolt on teeth. Heavy Duty Frame.  
•8ft \$7,995  
•10ft \$10,995  
•12ft \$11,995  
•27ft wing fold, \$32,900. Includes cement bolts. Bend, OR. 541-548-7185 mtcsales.net



Northwest Tillers 7ft. RB Series Box With Gauge Wheels, \$6,500. 12ft D Series, \$12,900. All In Excellent Condition Bend, OR. Call Scott 541-548-7185 See at: mtcsales.net



NEW IA Tandem and Offset Wheel Discs.  
•7ft \$6,995  
•8ft \$7,395  
•9ft \$7,795  
•10ft \$8,195  
•11ft \$8,495  
•12ft \$8,795  
•13ft \$8,995  
Bend, OR. 541-548-7185 mtcsales.net



NEW IA Rotary Mowers  
•6ft. 3 Point \$1,995  
•7ft. 3 Point \$2,495  
•10ft. 3 Point \$4,595  
•12ft. 3 Point \$4,995  
Bend, OR. Call Scott 541-548-7185. Visit: mtcsales.net



Ag Chem-Ag Gator 1004. 5,656 hours since complete restoration in 1998. 5.9 Cummins, Allison automatic. John Deere planetary axles. Raven Envivio Pro field computer. 70" GK stainless steel wet booms on 20" spacing. Michelin mega bib flotation tires. Boom primers. 600 gallon stainless steel tank with mechanical agitation. 15x35 adjustable rims included. Selling with 2 axle pintle hook trailer. Visit www.iokafarms.com for more pictures, \$57,500. Silverton, OR. 503-991-7138



John Deere Double Grain Drill Setup. 452 and 8350 models with hydraulic fold dual hitch. 25" working width. 10" spacing with tru-vee attachments. Fertilizer boxes. Nice shape for their age. Stored inside and oiled every season. \$23,000. Silverton, OR. 503-991-7138 Visit www.iokafarms.com for more pictures.



2005 Yetter model 1650 drill markers. Came off of a John Deere 450 double drill setup. Brackets, hoses, and sequencing valve included. Could be adapted to fit other drills. \$2,000 for the set. Silverton, OR. 503-991-7138

923 Farm Equipment

160C LC John Deere Excavator, Excellent Condition, \$55,000 John-Day, OR. 541-575-2274



Sicma rotary tiller SPR 185 with roller. Can be used with 540 or 1000 RPM. Reverse tine, \$13,000. Lebanon, OR. 706-570-9696



New Holland forage harvester FP240 with hay head, 3 row, 1000 RPM, \$13,000. Lebanon, OR. 706-570-9696

IH 1470 Hillside Combine, 2 headers, \$6,500 Cadman 3750, wide body XL sprinkler \$5,500. 14ft melrow press-drill \$2,650, dozens of others items, make offers. Independence, OR. 503-838-3740, 503-383-6722

Case IH 1680: Runs good. 4918 hours, \$6,000 OBO. Monmouth, OR. 503-881-1303

2010 485 Case International Quadtrac. 30ft Kello built disc. 30ft Brillion roller. Silverton, OR. 503-873-6774, 503-551-5809

Augur, 8" in diameter, 50' long, hydraulic drive, \$1,000 Jefferson, OR. 541-971-3421

New house, chopper, dolly, \$1,500 Jefferson, OR. 541-971-3421



GK H7 tree digger 2001 good condition, \$120,000. 2018 like new \$180,000 chopper, \$15,000. Undercut blade, \$2500. Discs, \$2500 each. 3 point attachment, \$8000 Dayton, OR. 503-437-4833



12' Hydraulic Dump Wagon, \$1900 Oakville, WA. 360-580-2592

Case International 1460 Axial flow, set up for specialty seeds, radish, etc. 810 pickup head, recently replaced rubber concaves. \$7000 or best offer. Dayton, OR. Contact Tom at 503-437-2299 or Sam at 503-864-2442

Case International 1680 Axial flow, two rotors, set up for specialty seeds, radish, etc. 1015 pickup head, 25" grain head with cart, new parts but does need some minor repairs. \$11,000 or best offer. Dayton, OR. Contact Tom at 503-437-2299 or Sam at 503-864-2442

**Farmland Tractor Supply**  
Tangent, Oregon  
New, Used, and Rebuilt Tractor Parts  
877-928-1646  
541-928-1646  
32427 Old Hwy, 34 Tangent, OR 97389

923 Farm Equipment

John Deere 9600 combines with pickup headers. 3600 hours. Spike and rasp, \$15,000 each Lafayette, OR. 503-437-4833



2011 Apache AS1220 Sprayer:  
-100 ft. booms  
-2658 hours  
-Raven auto guidance system  
-Auto boom height control  
-Adjustable wheel base (front and rear)  
-Comes with float tires (pictured) as well as skinny tires  
-1200 gallon tank  
We are the second owner of this machine, well maintained and in great condition. We are downsizing to a slightly smaller machine. Call or text at your convenience. President, TripleTree, LLC 503-843-5167 or 541-980-5045 text 971-757-0945



Hydra-Pull  
• 10 MODELS/SIZES • RENTAL OPTIONS • MADE IN USA  
• MANURE & COMPOST • HEAVY DUTY DESIGN  
BARR-TECH  
Compost / Organics Recycling  
AUTHORIZED DEALER OF PIK RITE SPREADERS.  
509-590-0437 • www.Barr-Tech.net • Sprague, WA

**Containers For Sale**  
20' and 40'  
REFRIGERATED CONTAINERS AVAILABLE  
Portland Container  
9449 N. Burgard Way, Portland OR  
Call Alan Conner (503) 286-5961, Ext.#4  
or 1-800-788-5159, Ext.#4  
boxsales@pdxcontainer.com  
(Credit Cards Accepted) \$252092-1

**Ask about our Rental/Purchase/Consignment Program.**  
It includes 100 hrs of use per month. Free delivery to the Treasure Valley.  
This is a partial list. See our website for a complete list. www.ray-brothers.com  
1985 JD 4650, power-shift, 480/85R42 ..... \$22,000  
2006 JD 4920, 120ft booms, 2,500 hrs ..... \$69,000  
2017 JD 6120R, Ext. Warr., 1,122 hrs ..... \$85,000  
2017 JD 6145M, 24 speed loader ready, 4,400 hrs ..... \$75,000  
2016 JD 6155R, Ext. Warr., 3,800 hrs ..... \$86,000  
2013 JD 7215R, matching duals, new front tires, 3,100 hrs \$89,500  
2012 JD 7280R, IVT, 5,200 hrs ..... CALL FOR PRICE  
1996 JD 7400, creeper gear 14.9:46 and 14.9:30 ..... \$35,000  
2017 JD 8245R, front weights, hammer strap, 1,758 hrs. \$159,000  
2015 JD 8270R, power-shift, 4,700 hrs ..... \$120,000  
2014 JD 9360R, 3point, good tires, 6,855 hrs ..... \$115,000  
**Ray Brothers Equipment**  
(208) 880-6344 • Call or Text Chris  
Ironside, OR • Financing Available!  
Email for more info  
CHRISRAY@RAYBROTHERS.NET

**FARM & HOME SUPPLY**  
1-888-643-3395 • 509-843-3395  
www.fhsupply.com Pomeroy, WA  
2013 CASE IH Patriot 4430 sprayer, 100' booms w/20" spacing, Aim Command.....\$149,999  
2001 CASE IH 2388 Combine Hilco Leveler, 3,398 Sep. Hrs /Case IH 1010 Header 30Ft /Cart.....\$78,500  
2000 Case IH 2388 Combine Hilco Leveler, 4,492 sep. hrs, /Case IH 1010 30' Header/ Cart...\$65,000 OBO  
1989 John Deere 8760 wheel tractor, 6 newer tires..... ON SALE..... \$25,000 OBO  
2020 Schulte 5026 rotary cutter .....\$52,500  
New Great Plains 30' Turbo Max .....\$75,500  
New KIOTI PX1153 Tractor, Power Shuttle, cab & self-leveling loader, 110-hp.....\$73,500  
THE TANKER Field Service Tender 990 gal. fuel tank, 100 gal. DEF tank. ....\$25,000  
Trails West Baron II 18' cattle/stock trailer, sprayed in liner, front walk-in door, LIKE NEW...\$13,500 OBO  
CASE IH AGRICULTURE \$225435-1

923 Farm Equipment

Custom ground work wanted, 100 acre minimum, all types of ground work. Jefferson, OR. 503-932-0012

Schmeiser Land Plane Blade. 40 feet long. Like new. \$23,000. Jefferson, OR. 503-871-6340

"I get great results with Capital Press...and I have for over 20 years." Mark, Pro Truck  
Call 1-800-882-6789 to advertise.

923 Farm Equipment



16ft Live Floor Commodity Box. Great for hauling Bark, Silage, Compost, \$6,000. Astoria, OR. 208-541-3408

IF YOU HAVE A BEEF - sell it in next week's Capital Press!

923 Farm Equipment



FERRI 5' Articulating Flail Mower. Model, ZME155, side shift, up-slope, downslope. Like new - less than 300 hours, \$4500 Banks, OR. 503-324-7825.

SERVING LOCAL BUSINESS SINCE 1910  
**ERNST**  
Irrigation • Electrical • Tractor  
ERNST IS YOUR FULL SERVICE AGRICULTURAL DEALERSHIP. WE WILL FULFILL ALL YOUR IRRIGATION, CUSTOM IRRIGATION DESIGN, AG EQUIPMENT PARTS, HARDWARE, ELECTRICAL EQUIPMENT, SYSTEMS DESIGN & SERVICES, TRACTOR REPAIR, IMPLEMENT REPAIR, ATV & LAWNMOWER NEEDS. OUR OUTSTANDING STAFF OFFERS YEARS OF EXPERIENCE AND KNOWLEDGE TO SUPPORT YOU AND YOUR BUSINESS, LARGE OR SMALL. WE ARE HERE TO SERVE YOU!  
20179 MAIN ST. NE, SAINT PAUL, OR 97137  
WWW.ERNSTIRRIGATION.COM, 503-633-1111

**KIOTI**  
run ahead of the pack  
ZERO PERCENT FINANCING & CASH BACK OPTIONS  
**FISCHER MILL SUPPLY, INC.**  
EST. 1889 503-631-3411 OREGON CITY, OR  
NEW KIOTI TRACTORS  
CX2510M, 24 hp, ROPS, manual transmission, loader.....CALL  
VISIT FISCHERMILLSUPPLY.COM TO SEE ALL INVENTORY  
**USED TRACTORS**  
Massey Ferguson 1190, 4WD, ldr, manual.....CALL  
New Holland TK4050 vineyard crawler, canopy w/ A/C. \$63,500  
**USED HAY EQUIPMENT**  
Hession 1071 Haybine, 7' cut, clean .....\$5,250  
Hession 1006 6-disc mower.....Coming In  
Massey 1363 Disc Mower cond., 910" .....\$19,500  
Massey 1745 Round Baler.....\$16,900  
Massey 1838, 2021, small square baler, 1500 bales, hydraulic tension and pickup.....CALL  
New Holland 855 Round Baler.....\$5,950  
New Holland BC5070 Square Baler.....CALL  
New Holland 489 Haybine.....\$4,950  
Kuhn GRS24 Tedder/Rake.....\$3,250  
**MISCELLANEOUS**  
Case CX36B excavator w/ thumb.....\$35,900  
3-Bush Hog mowers, HD, (1) 5' & (1) 6'.....CALL  
Edwards 3pt. Hydraulic Forklift.....\$2,800  
Erskine Utility Grapple 60" .....\$3,700  
Montana Air Blast Sprayer 110gal.....\$4,950  
Kuhn MDS10.1 Fertilizer Spreader.....\$4,950  
Aerway AW050S 3pt. Aerator, 60" .....\$2,950  
Graham Chisel Plow 9-shank .....\$3,750  
John Deere 4600A 5-bm. R/O plow.....\$5,950  
Rankin 334 3-shank ripper.....\$2,150  
Fransgard V-6500 Skidding Winch 3pt .....CALL  
**Many other used small implements in stock!**  
SEE OUR AD EVERY OTHER WEEK!

**D&S TIRES INC.**  
26884 Pearl Rd • Parma, Idaho 83660  
New Track Shop that brings BIG Savings to the Western U.S!  
(208) 635-0700  
We are your #1 Source for retreading & repairing rubber tracks for your ag tractor.  
**STOP!**  
Don't Throw Away Perfectly Good Track Because It's Missing Guide Blocks. Don't Waste Money! We Can Repair Your Guide Blocks for Much Cheaper Than New.  
CALL TO GET YOUR GUIDE BLOCKS & TRACK REPAIRED TODAY!  
**LET US RELUG YOUR TRACK AND SAVE YOU THOUSANDS \$\$\$\$ OVER NEW**  
**NEW TRACK AVAILABLE! CHECK OUT OUR PRICES!**  
**D&S TIRES = HUGE SAVINGS!!!**  
JD 8000 DRIVER WHEEL \$2,850 per side  
IDLER WHEEL \$450  
MID ROLLER \$200  
WE ALSO DO JD9000, CAT & QUAD TRAC WHEELS.  
**D&S TIRES INC.**  
Celebrating 50 Years In The Tire Business 1971-2021  
6884 Pearl Road Parma, ID (208) 635-0700  
661 South Lincoln St West Point, NE (402) 372-5572  
620 North 23rd Street Richmond, IN (765) 965-5251  
For More Information Ask For Martin  
For More Information Ask For Jimmy

**GK SPREAD PRO - 700 lbs. capacity!**  
Stainless Steel Frame!  
Easily attaches to your existing ATV, UTV or tractor!  
Choose from hydraulic, electric or manual controller!  
The NEW GK Spread Pro works with a variety of fertilizers for efficient spreading  
**GK MACHINE, INC. \* WWW.GKMACHINE.COM \* 503-678-5525**

Western STORAGE TRAILERS 1-800-652-7368  
**1-800-OK-2-RENT**  
Rent or Sale Containers and Trailers  
**CONTAINERS: 20' & 40'**  
**TRAILERS: 27', 40', 45' & 48'**  
Western Mobile Storage  
1-800-652-7368 • 541-342-1835  
Eugene, OR \$223847-1