

875 Tanks & Storage

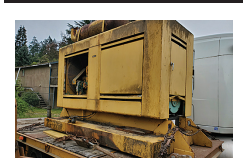
WANTED: 8,000 - 13,000 gallon stainless steel tank. 208-899-2914

FUEL TANKS:

Used single wall tanks 1500 & 2000 gallons. New 1000, 2000, 3000 and 4000, etc. gallon double walled tanks. Salem, OR. Peter 503-881-9803

2 gas station fuel pumps, \$500 each, Dallas, OR. 503-931-3724

878 Generators



1974 Onan generator powered by 855 Cummins. Runs great and doesn't smoke. Makes power and will do the job. Low hours for a 1974 generator. Mounting base is a 175 gallon diesel tank, \$6,500. Myrtle Creek, OR. 503-708-6146



GENERATORS: Used, low hour takeouts, 20kW to 2000kW, diesel, propane, & natural gas. Cooperstown, ND. We ship nationwide. 701-371-9526 or 701-367-4305 abrahamindustrial.com



550KW Mobile Genset: Two 275KW generators operated single or in tandem. Switch gears. All modern digital controls. Silenced exhaust. 1000 gallon fuel. 40ft. Utility van enclosure. 50 hours and 54 hours on the generators. 8 near new 11/22.5 radials. Former Municipal in new condition throughout, \$49,900. Located in Twin Falls ID. Call 208-613-0050



CAT 100kW self contained genset. 3116 CAT Diesel. 521 ACTUAL HOURS. 120-240-480 Volt. 1 to 3 phase. One owner former County machine from Southern California. Low hours and excellent maintenance. Work Ready. \$12,900. Located in Twin Falls ID. Call 209-613-0050

881 Shop Equip. & Tools

8 Cross Cut saws, some single and some doubles, some have handles and some don't, \$275/all. Clatskanie, OR. 503-728-3562

For Sale by Owner. Many years of collecting tools & equipment. Welding machines, pipe machines, & wrenches. Way too many to list. Several vehicles and equipment too. This is not a Garage Sale. Most all located in Pendleton, OR. For more information call 541-379-0851

887 Irrigation Equip.

WHEEL LINES FOR SALE 5" wheels x 1,800'. Levellers, sprinklers, travelers, working motors, \$6,000 each. Fields, OR. 503-799-2677



REFURBISHED PUMPS AT A FRACTION OF THE COST OF NEW. (6) Cornell Marathon Electric, 15 to 75hp, 1760-3500 RPM's; (3) Berkeley Baldor Industrial Motor, 7.5 to 15hp, 3450 RPM's. Meridian, ID. 208-888-1376



HOT! SAVINGS at Capital Press 1-800-882-6789 CapitalPress.com

WaterTec
High Quality Brass VYRSA Impact Sprinklers

1/2" Part Circle \$15.60
1/2" Full Circle \$11.70
3/4" Part Circle \$25.74
3/4" Full Circle \$14.88

Call Us Today for Bulk Pricing!
360.393.4923
Lynden, WA
watertecna.com

WATER MASTER SERIES AND EVERGREEN
SUPERIOR SERVICE & DESIGN

- All your needs for irrigation parts service
- We build custom equipment for your special needs
- Hose replacements & fusion repairs
- Transport Tanks • Rental Returns & Used Equipment
- Structural and steel available for purchase

VALLEY WORKMAN
Truck Equipment

- Full Service
- Alterations
- Dump Bodies • Hoists
- Farmbeds • Flatbeds

VALLEY FAB
CORP

10910 Portland Rd. NE • Brooks, OR
Call: 503-792-3739 • Fax: 503-792-3738

887 Irrigation Equip.



NEW IA Pivot Track Closer. Heavy Duty with adjustable cone discs. From 60" to 12" closing width. Hydraulic Depth Control water fill roller packer, \$5,495. Bend, OR. 541-548-7185 mtcsales.net



2003 Gorman Rupp 4" SELF PRIMING towable pump in like new condition, 150 ACTUAL HOURS. Deutz 3 cylinder. Diesel. Nice trailer. Former City machine that has been well maintained and is work ready. Located in Twin Falls Idaho, \$12,900. Call 208-613-0050

(27) Used Pivots: New listings coming. Engines, pumps. Garden Valley, ID. Call Mike at 208-420-1480, or see www.pivotsplus.com

Deisel powered irrigation pump, trailer mount, \$4500 Dallas, OR. 503-931-3724



6" 30ft sticks mainline irrigation pipe, Arco, a dollar a foot with fittings, new gaskets. 25 horse ag pump, been stored in barn, \$400. Will consider trades, OBO. Aurora, OR. 503-572-7114

2 Nelson Big Guns 100 and 150. Never used. Still in boxes. Movable stand on wheels, \$500 for 100; \$1,000 for 150. Sprague, WA. 509-434-9492

890 Packing/ Processing Eq.



Fluid bed drying system. Dries 1,000 lbs biomass per hour. Good for drying any chipped material; wood, straw, hemp, sand, animal bedding, seeds. Previously used for industrial hemp. 3 phase/ propane burners (can convert to natural gas) \$150,000. Lebanon, OR. 706-570-9696

887 Irrigation Equip.

Buying or Selling
Capital Press is here to help you!
1-800-882-6789
or FAX 503-370-4383
CapitalPress.com

Frost Protection
Pipe & Supply

Authorized Factory Dealer of **Orchard-Rite**
Wind Machines
598 Baseline
Cornelius, OR
Office: 503-357-4217
info@hpspipe.com



2016 Hyster H50CT 5000lb capacity (refurbished), 3 stage, side shift, rebuilt engine, new brakes, serviced and job ready. F.O.B. McMinnville, OR. \$12,500. Call/Text 503-550-7625 www.SpringHollowEquip.com



2016 Hyster H50CT 5000lb capacity (refurbished), 3 stage, side shift, rebuilt engine, new brakes, serviced and job ready. F.O.B. McMinnville, OR. \$12,500. Call/Text 503-550-7625 www.SpringHollowEquip.com

WaterTec
High Quality Brass VYRSA Impact Sprinklers

1/2" Part Circle \$15.60
1/2" Full Circle \$11.70
3/4" Part Circle \$25.74
3/4" Full Circle \$14.88

Call Us Today for Bulk Pricing!
360.393.4923
Lynden, WA
watertecna.com

WATER MASTER SERIES AND EVERGREEN
SUPERIOR SERVICE & DESIGN

- All your needs for irrigation parts service
- We build custom equipment for your special needs
- Hose replacements & fusion repairs
- Transport Tanks • Rental Returns & Used Equipment
- Structural and steel available for purchase

VALLEY WORKMAN
Truck Equipment

- Full Service
- Alterations
- Dump Bodies • Hoists
- Farmbeds • Flatbeds

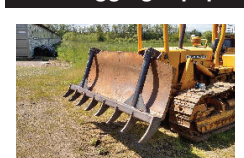
VALLEY FAB
CORP

10910 Portland Rd. NE • Brooks, OR
Call: 503-792-3739 • Fax: 503-792-3738

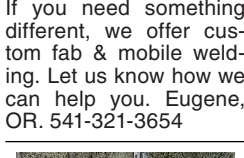
890 Packing/ Processing Eq.

Used Super Sacks. Used once. Stovepipe Top: \$2. Opened Top: \$3. Salem, OR. 503-932-8598

893 Logging Equip.



Paramount Ironworks has new brush rakes. We can help your land clearing/ clean up operations. The 8ft rake pictured will fit a variety of dozers and has 1"AR400 rippers, \$1995 and up. If you need something different, we offer custom fab & mobile welding. Let us know how we can help you. Eugene, OR. 541-321-3654



All Steel Rail Car Bridge: 53ft long, 12ft wide, security swing locking gate, heavy duty having served our farm carrying loads of logs, rocks. Available early September, \$10,000. Sheridan, OR. Jim Letourneux, President, TripleTree, LLC 503-843-5167 or text 971-757-0945

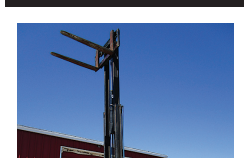
Rotobec Grapple, 4048HD. Never been used, \$12,500. Heel rack, additional. Parkdale, OR. 541-806-6476

Logging Cedar? Cedar boughs wanted in October and November. Call Lars 503-348-5902

894 Sawmill Equip.

WANTED: Mobile Dimension, Mighty Might or Timber Champ Circular Sawmills. Any age/ condition. Dead or Alive. Have Cash. Klamath Falls OR. 530-905-2250

896 Forklifts



Dresser TD7G Dozer, 6 way blade, multi shank ripper (3), 2006 hours, Asking \$23,500. Sandy, OR. Call Pepe: 503-544-3232; Call Pat: 503-407-9062

1979 Caterpillar 955C front end loader, extensive service records, newer tires, Gronelvel auto grease system. Well taken care of with records to show, \$25,000. Redmond, WA. 425-883-0821

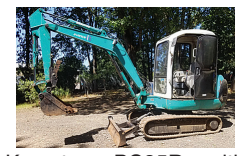
899 Heavy & Indust. Eq.



1976 Caterpillar 966 C front end loader around 25k hours on the machine has newer tires on it as well extensive service records asking \$25,000. Redmond, WA. 425-883-0821



Komatsu PC35R with mechanical thumb, good condition cab interior. Starts, runs well. 7288 hours, 22 inch bucket, \$21,000. Cash Only. Beaverton, OR. 503 522-6512



2000 Ingersol Rand 185 CFM air compressor with 4 KW generator. Skid mount. John Deere Diesel 50 Ft. of hose. Very clean well operating machine from a large California County, \$7900. Located in Twin Falls ID. Call 208-613-0050



2000 Ingersol Rand 185 CFM air compressor with 4 KW generator. Skid mount. John Deere Diesel 50 Ft. of hose. Very clean well operating machine from a large California County, \$7900. Located in Twin Falls ID. Call 208-613-0050

Capital Press CLASSIFIEDS
1-800-882-6789
CapitalPress.com

899 Heavy & Indust. Eq.

CAT D4E Logger. Winch needs work, \$12,000. Beaver Creek, OR. 503-632-3333

2-1/2 yard 4WD Scoop mobile loader with Cummins engine, \$3900. HD6 CAT with 371 engine, drum and blade, canopy, \$4900 OBO. Both ready to work. Turner, OR. 503-930-1706



1980 CAT D7G: Power tilt blade, 10ft. Hydraulic, 3 valve at draw bar. AC and heat in cab. Direct drive. Grate shape. Will deliver, \$39,000. Gaston, OR. 503-789-3726

Jaw Crusher Plant 32"x42". With a separate 32"x42" apron feeder. Both are portable with heavy duty hydraulic legs. Good tires, \$150,000. Oregon. 541-954-4808



NWTL Inc Heavy Haul & Trucking
Travis Dispatch
503-849-6867
Services:
•Multi-Axle Lowboy
•Heavy Haul
•Heavy Equipment Recovery
•Equipment Transport
•Agriculture Equipment
•Construction Equipment
•Forestry Equipment
•All Lower 48 States
Hourly and Mileage Rates Available, Sandy, OR.



1999 John Deere 644H Wheel Loader: John Deere 6081H diesel, A/C and heat. Enclosed cab, 4.25 yard bucket, asking \$32,500. Sandy, OR. Call Pepe: 503-544-3232; Call Pat: 503-407-9062



1969 CAT 966C Wheel Loader, asking \$17,500. Sandy, OR. Call Pepe: 503-544-3232; Call Pat: 503-407-9062

BIG TRACTOR PARTS, INC.
~ GEARED FOR THE FUTURE ~

STEIGER TRACTOR SPECIALIST

- 1. We are your source for new & used Steiger drivetrain parts Series 1-9300 Series.
- 2. We rebuild Spicer manual transmissions, Fugi power shift transmissions, dropboxes & axle with ONE YEAR WARRANTY!
- 3. We now rebuild computer control boxes for Steiger tractors 1982-1999.

800-982-1769
www.bigtractorparts.com

HAYMAKER HEAVEN
R.I.P.
REASONABLE IMPLEMENT PRICING



JD SWATHER/BALERS

SWATHERS	830	466
4890	800	348
4990	945	347
3830	Moco	346
3430	935	337
2420	Moco	336
2320	1380	224
2280	1470	216
2270	BALERS	214
2250	468	24T
880	467	14T

LOTS OF TRACTORS & COMBINES TOO!

Nyssa Tractor & Implement
Celebrating 31 years in the agricultural machinery business.
Our yard has 5 miles of road, with machinery on both sides.
FREE Tours Given Daily.
Call Toll Free: (833) 372-4020
www.nyssatractor.com
sales@nyssatractor.com
Nyssa, OR 5223515-1

905 Antique Farm Eq. & Parts

Caterpillar D6-9U, factory electric start, with glow plugs on all 6 cylinders, factory turbo-charger, factory 24 volt alternator, hydraulic pump with 6 outlets, 28" pads, 5 speed transmission, 2 reverse speeds, built in 1957, 63 years old, low hours on meter, \$5500 Weston, OR. 850-892-5766



1948 John Deere model D, electric start, good tires, good paint, Salem, OR. 503-393-1347

907 Nursery Equip. & Supplies

WANTED: 10K HD #2 & 10K #3 HD Nursery Pots, clean. Salem, OR. Call Mark 503-932-3920

USED NURSERY CONTAINERS: Used, but reusable nursery containers. All sizes. Inventory changes daily. Call for current availability and prices. Sawyer Farms, Scio OR. 503-769-3417, juddsfarm@vwi.com (also wanted: used containers)

FRESH SAWDUST: Consistently fair pricing. 9 Unit Loads Now Available Forest-Grove, OR. For pricing call 503-849-0216

908 Garden, Turf, Yard Equip.



John Deere 1620 Wide Area Mower, 3153 Hours, Diesel, 4WD Asking \$8500. Sandy, OR. Call Pepe: 503-544-3232; Call Pat: 503-407-9062

911 Hay Equip.

New Holland Disc Mower Model 463: heavy duty, 6 disc, new rock guards, \$4900. Sandy, OR. Please Leave Message. 503-668-7326



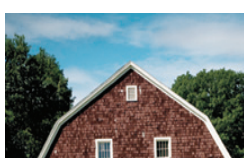
902 Farm Equip. Parts

HAY EQUIPMENT: Hay Squeeze/ dozer 4x4 combo, diesel, on tires, \$18,500. Deutz Tedder, \$1,400. Ford Rollover Plover, \$2,800. John Deere Land plane, \$3,700. Single Dalf Rake, \$900. John Deere Seeder, \$800. Small Ripper. Disc. Packer. Klamath Falls, Oregon. John 541-892-1948



Sitrex HM/300 Hay Rake, used one year, like new condition, \$4,500 OBO. Rainier, WA. 360-446-7763

New And Used Parts: for all models New Holland bale wagons. Largest inventory in North America. Sod Busters Sales, Polson, MT. 877-735-2108 or 406-883-2118

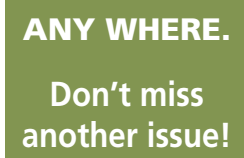


400 gallon Orchard Master sprayer, fiberglass tank, \$1200, good condition, Salem, OR. 503-362-4381

Propane Cannons (4) ZOG Mark 4 propane cannons, like new. Made in Holland. \$210/ each or \$800/ all. Propane tanks additional \$20/ each. Salem, OR. 503-798-3993



2016 Hydrostatic Massey Ferguson 2705E with loader, 7ft hydraulic angle/ tilt blade, \$26,000 cash only. Beaverton, OR. 503-522-6512



1956 John Deere 70LP Row Crop, \$7,000. Banks, OR. 503-277-8978

Farmall Cub Lo-Boy: rototiller, creeper drive, fast hitch. Farmall 140, 2 valve, cultivator, middle & rear, side sickle mower, fast hitch, \$3500 each. Coeur D'Alene, ID. 208-667-8833

911 Hay Equip.

Large Supply of Rebuilt New Holland Bale Wagons: Also buying New Holland bale wagons. Sod Busters Sales, Polson, MT. 406-883-2118

#1 Balewagons: Buy, Sell, New Holland 2&3 wide self-propelled, pump-type models, parts, tires, manuals. Caldwell, ID. 208-880-2889 www.balewagon.com



Hay Rakes: John Deere 700, good condition, field ready, \$5900. Emmett, ID. 208-841-1751



6ft rotary mower, like-new condition, used for approximately 8 hours, \$2500, reason for selling is current tractor doesn't have enough power to run it. Lebanon, OR. 541-451-0711, 541-401-0408



New Holland HW-340 self propelled rotary swather. 2852 hours, 15'5" wide. Header updated, \$38,500. Call for details. Sisters, OR. 541-771-4970

Gophers • Squirrels Voles • Moles Ask for your Capital Press Discount
Dealer Locator
1-800-214-2248
Harrisburg, OR \$219718.1

914 Potato/ Sugar Beet Equip.

Lockwood 574 harvester. Excellent condition. Harvested less than 1,000 acres. Lockwood 606P Aircup planter. Field ready. Double L 831 piler. New belt, rollers, remote control and hydraulic valves. Call for more info. Moses Lake, WA. 509-750-1752

Lockwood 4630 3 row harvester, clod table, small chain, set to dig small potatoes, \$15,000 Toppenish, WA. 509-952-4457

Lockwood 4500 2 row harvester, clod table, small chain, set to dig small potatoes, \$10,000 Toppenish, WA. 509-952-4457

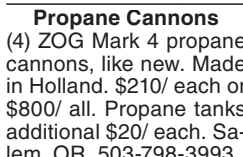
917 Orchard/ Vineyard Equip.



2014 Flory 7656 diesel sweepers. Excellent condition, \$35,950 each. Oakdale, CA. Call or text Henry at 209-531-8398.



1954 Ferguson 35: two owners, runs great, good tires, PTO, \$3000 OBO. Grand Mound, WA. 360-481-0138



400 gallon Orchard Master sprayer, fiberglass tank, \$1200, good condition, Salem, OR. 503-362-4381

Propane Cannons (4) ZOG Mark 4 propane cannons, like new. Made in Holland. \$210/ each or \$800/ all. Propane tanks additional \$20/ each. Salem, OR. 503-798-3993

920 Tractors



Like new! 409 hours. 2016 Hydrostatic Massey Ferguson 2705E with loader, 7ft hydraulic angle/ tilt blade, \$26,000 cash only. Beaverton, OR. 503-522-6512



1956 John Deere 70LP Row Crop, \$7,000. Banks, OR. 503-277-8978

Farmall Cub Lo-Boy: rototiller, creeper drive, fast hitch. Farmall 140, 2 valve, cultivator, middle & rear, side sickle mower, fast hitch, \$3500 each. Coeur D'Alene, ID. 208-667-8833

920 Tractors



2007 Kubota MX5000: 50HP diesel, loader, huge backhoe, tiller, owner's manuals, less than 400 hours, \$30,000. 18ft flatbed also available. Hillsboro, OR. Call/text 503-930-1359

New Holland T8.275 Tractor with Duals. Approximately 2750 hours; original owner. 1 pair Rr 500lb weights, 22 front weights with bracket. Cab suspension, Navigation 11 controls. Transmission