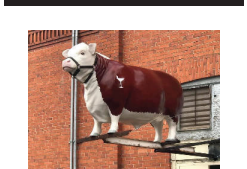


525 Commercial Property

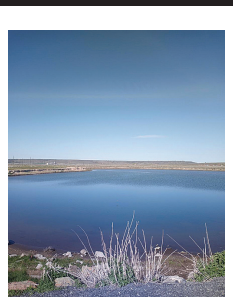


Own an established & profitable Butcher Shop in rural Eastern WA. Garfield Meat's was established in 1952. Since then, the shop has been producing quality meat with no interruptions and only 3 owners, with the current owners celebrating 25 years. The market has a strong State wide customer base, and the current owner is willing to stay on staff, to assure the customers the same great quality while you acclimate into ownership. The business has a great reputation with more potential growth for new owners.

- Approximately 2000sqft, brick building
- 2 massive walk-in freezers
- 4 walk-in coolers (1 new in 2020)
- Rail system to easily move product from butcher room to cutting floor
- Shrink Wrap Hot Knife Wrapping & Labeling System
- Tumbler
- Smokehouse
- Carcass breaking saws
- Slicers, Cuber, Stuffer, Grinder, Mixer
- Slaughter Truck
- Horse Trailer
- Completely Turn-Key \$420,000.

Garfield, WA. 509-288-0046
www.garfieldmeatshop.com. windytevin@gmail.com

540 Recreational Property



83 Acres 7 miles West of Burns, OR. 1884 water right on entire parcel. With 30 acres of Native Meadows. Water supplied from numerous year round ground springs & 5.5 acre spring fed pond stocked with bass & blue gill. Best duck & goose hunting area in Harney County. Year round gravel road to property. Excellent homesite overlooking creek. There is a domestic well & pump house. Plus 2 small outbuildings on property. Broker owned, \$360,000. Possible Owner Financing. Call for more details. 541-589-2068

546 Rentals, Leases

FOR RENT Bend, OR

For Rent 30 Irrigated Acres under pivot. Bend, OR. Long term/ short term. 1st year FREE with clean up. 503-330-8991

546 Rentals, Leases

FOR LEASE: 175 Acres, Newberg and Chapman soil. 1st and 3rd water rights on South Santiam River. Buried main line. Above ground main line, 4000 ft of 3" pipe. 30HP and 60HP pumps. Traveler irrigation sprinkler. Currently in peas. Lebanon, OR. 503-819-6209; brianpaulod89@gmail.com

561 Ranches

KNIFE LAND
Timbered Land - OR
Timbered land parcels in NE Oregon ranging in size from 795± to 9,772± acres, all with great hunting and recreation. \$1,140,000 - \$9,319,000

Cascade Timber Ranch NEW - ID
640± acres with meadows, timber, a creek, & ponds. \$5,350,000. Or purchase 320± acres \$2,970,000.

Carey Farm - New - ID
30± air miles south of Sun Valley. 436± acres has 250± acres irrigated by 5 pivots and 3 wheel lines, & 1,288± sf home. Zoned for 1 home per acre, or 1 home per 10 acres. May work well to develop. BTVAID \$3,500,000
208.345.3163 knipeland.com

564 Farms

1-800-882-6789
Classified Line Ads Get Results - CapitalPress.com

We deliver your message to the West's ag audience, wherever they are.

- Newspaper
- E-Editions
- Mobile
- Websites
- Flyers
- Custom Publications

Call us today and see how we can help your business grow.

Capital Press
800-882-6789
CapitalPress.com

THIS AD SPACE could be yours!

1-800-882-6789
or FAX 503-370-4383
CapitalPress.com

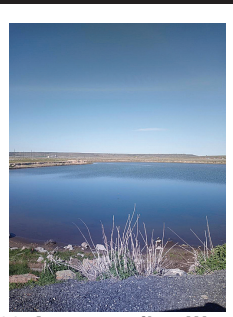
FOR LEASE

Vegetable Processing Facility and 2 Storage Buildings Hermiston Oregon. Processing Facility approximately 58,000 sq. ft. with office, lunch room, receiving area, packing room, two large cold rooms, shop/parts room, staging room, shipping/ loading dock for three (3) trucks, scales); 2 Storage Facilities (30,000 sq. ft. facility with dehumidification; 60,000 sq. ft. facility with computerized refrigeration and dehumidifiers), private railroad spurs for transportation, water rights (well), septic, electricity, water lagoon for waste water. Will possibly rent processing facility and storage facilities separately. Contact Larry Blunck at 503-656-1654 or larry@bluncklaw.com

561 Ranches

Looking For A Relaxed Off Grid Lifestyle? This Property Is A "Must See"! 2544 Deeded Acres with 283 Irrigated & 2260 BLM. Run 75 to 100 Head Of Cattle, Prior 18 Years Guest Ranch Sleeps 12, Hunt Trophy Mule Deer, 8 Ponds, Home, Shop, Barn, Stalls, Greenhouse, Hay Storage. 30 Miles From Lakeview, OR. \$1,999,000 RMLS #21237893 541-575-2617 www.dukewarerealtyeasternoregon.com ljh@ortelco.net

564 Farms



83 Acres 7 miles West of Burns, OR. 1884 water right on entire parcel. With 30 acres of Native Meadows. Water supplied from numerous year round ground springs & 5.5 acre spring fed pond stocked with bass & blue gill. Best duck & goose hunting area in Harney County. Year round gravel road to property. Excellent homesite overlooking creek. There is a domestic well & pump house. Plus 2 small outbuildings on property. Broker owned, \$360,000. Possible Owner Financing. Call for more details. 541-589-2068

Your ad here! Call 800-882-6789

**CARAWAY IMPULSE
PRELATE CARTIER
REFERENCE LETTER
SEATURTLE
WAH MAT IRAQI
CZECHS MOM PUT
STARE CHEW APES
EVERGREENTREE
ACED PUNK SCANT
BAH SAX RASSLE
CNOTE UFO EYE
ANTIPASTO
JEEPERS CREEPERS
OPTICAL CURACAO
BADNAME EPILOGS**

561 Ranches

for RANCHES & FARMS call Crater Lake Realty, Inc.
Linda L. Long, Broker
541-891-5562
Chiloquin, OR
linda@craterlakerealtyinc.com • craterlakerealtyinc.com

182 Acre livestock farm in Riverside, WA.

This property features breathtaking views, 1910 farm house with carport, insulated shop, large livestock barn with tack room, run in shed and 5 stall horse barn. Lots of room for livestock and great equestrian property. Property includes 5 tax parcels, 2 domestic wells and is perimeter fenced. Call Debra Cromer Realty Executives Grant County 509-990-8733

"The Capital Press is IT!"
Lorin Zastoupil • Leaburg, Ore.
Subscribe at 1-800-882-6789

567 Dairy Farms

DAIRY RETIREMENT SALE
SUNNYSIDE, WASHINGTON DAIRY FARM

◆ ASKING PRICE \$6,495,000 ◆

Approximately 540 total acres (180 acres irrigated) Permitted for 4,000 milking or dry cows

- ◆ Double 25 Herringbone Barn
- ◆ Separate Hospital Barn
- ◆ 7 Bay Commodity Barn
- ◆ 5 Bay Mechanical Shop
- ◆ Truck Scale and Scale House
- ◆ Flush Manure System w/ Roller Press
- ◆ 1,500 sf Mobile Home

ALSO AVAILABLE

- ◆ 2,400 Milk/Dry Cows w/ 160,558 lbs NDA Base
- ◆ 1,200+ Heifers
- ◆ Feed Inventories
- ◆ Main Residence
- ◆ 7,400 sf nearby
- ◆ Outside equipment
- ◆ Will consider a lease of the dairy



For more details call (949) 650-9580 or email: GARYG@GENSKEMULDER.COM

Processing Plant, Warehouse, Offices.

Property includes 5.14 Acres and 77,000sqft of buildings and office space. Hot pack processing line, warehouse, and offices. North of Salem, OR. Close to I-5. \$3,000,000
Email: farmforlease18@gmail.com

A picture is worth a 1,000 words



Add a full color photo to your print and online ad.

Capital Press
800-882-6789
CapitalPress.com

PUBLISHER'S NOTICE

All real estate advertising in this newspaper is subject to the Fair Housing Act which makes it illegal to advertise "any preference, limitation or discrimination based on race, color, religion, sex, handicap, familial status or national origin, or any intention to make any such preference, limitation or discrimination." Familial status includes children under the age of 18 living with parents or legal custodians, pregnant women and people securing custody of children under 18.

This newspaper will not knowingly accept any advertising for real estate which is in violation of the law. Our readers are hereby informed that all dwellings advertised in this newspaper are available on an equal opportunity basis. To complain of discrimination call HUD toll-free at 1-800-669-9777. The toll-free number for the hearing impaired is 1-800-927-9275.



564 Farms

564 Farms

564 Farms

564 Farms

564 Farms

564 Farms

564 Farms

564 Farms

FarmSeller FARMSELLER.COM Find the land, farms, and ranches you're looking for

DIRECTORY OF PREMIUM AGENCY MEMBERS

 Brook Havens Cascade Sotheby's International Realty 541-604-0788	 Patty Cordoni Cascade Sotheby's International Realty 541-771-0931	 Pam Mayo-Phillips Cascade Sotheby's International Realty 541-480-1513	 Linda Long Crater Lake Realty Chiloquin, OR 541-783-2759	 Jerry Franklin Eastern Oregon Realty John Day, OR 541-575-2121
 Tim Cobb Farmland Company Spokane, WA 509-624-4408	 Robert Bacon Fischer Nicholso Realty Klamath, OR 541-545-1510	 Stacey Moyles Century 21 Showcase Realtors, Inc. Klamath Falls, OR 541-882-2121	 Lisa Johnson Horsepower Real Estate Junction City, OR 541-510-4601	
 John Lee Lee Real Estate Aumsville, OR 503-245-9090	 Paul Terjeson Oregon Farm Brokers Corvallis, OR 503-999-6777	 Jason Nash Keller Williams Realty Southern Oregon 541-591-5195	 Steve Helms Keller Williams Farm & Ranch Albany, OR 541-979-0118	 Curtis Hitchcock Knife Land Company Boise, ID 208-866-2825
 Janey Knipe Knife Land Company Boise, ID 208-345-3163	 John Knipe Knife Land Company Boise, ID 208-345-3163	 Tom Gill Knife Land Company Mountain Home, ID 208-860-0776	 Julie Mansfield-Smith Mossy Oak Properties Copper Creek Land Co. Kimberly, OR 541-519-6891	 Jake Polvi POLVI Bend, OR 541-410-3050
 John Collins Ranch-N-Home Realty La Grande, OR 541-963-5450	 Judy Willis Real Estate Associates Joseph, OR 541-432-4060	 Ken Wick Real Estate Associates Joseph, OR 541-432-4060	 Mark Jones Robert Jones Realty Twin Falls, ID 208-733-0404	 Kirk Makin Ruby Peak Realty Joseph, OR 541-432-3131
 Claressa O'Connor Timberline Realty Joseph, OR 541-432-1234	 Jim Whitney Whitney Land Company Pendleton, OR 541-278-4444	 Todd Longgood Whitney Land Company Pendleton, OR 541-278-4444	 Robert Carnahan Artisan Real Estate Associates Dufur, OR 503-313-0419	

CALIFORNIA
HOLLISTER SAN BENITO REALTY 831-637-5563

IDAHO
BOISE KNIFE LAND 208-345-3163
POCATELLO INTERMOUNTAIN LAND EXCHANGE, INC. 208-232-8306
STAR FLINDERS REALTY & EXCHANGE 208-334-3840
TWIN FALLS ROBERT JONES REALTY INC. 208-733-0404

MONTANA
BILLINGS ROCKY MTN. RANCH REAL ESTATE 406-259-6666
MISSOULA STELLING RANCH & LAND 406-728-9200

NEVADA
FALLON BERNEY REALTY LTD. 775-426-8023

OREGON
ALBANY KELLER WILLIAMS FARM & RANCH 541-979-0118
AUMSVILLE LEE REAL ESTATE 503-245-9090
BAKER CITY AGRILANDS REAL ESTATE 541-853-1212
INTERMOUNTAIN REALTY 541-523-4434
BEND CASCADE SOTHEBY'S INTERNATIONAL REALTY (PAM MAYO AND BROOK HAVENS) 541-923-1376
CASCADE SOTHEBY'S INTERNATIONAL REALTY (PATTY CORDONI) 541-771-0931
COLDWELL BANKER BAIN 541-280-4372
FAY RANCHES 541-419-0770
POLVI 541-410-3050
BONANZA FISHER NICHOLSON REALTY, LLC 541-545-1510
BURNS JETT BLACKBURN REAL ESTATE 541-573-7206
CHILOQUIN CRATER LAKE REALTY 541-783-2759
CORVALLIS OREGON FARM BROKERS 503-999-6777
DAYVILLE DUKE WARNER REALTY 541-987-2363
DUFUR ARTISAN REAL ESTATE ASSOCIATES 503-313-0419
JOHN DAY EASTERN OREGON REALTY 541-575-2121
JOSEPH REAL ESTATE ASSOCIATES 541-432-4060
TIMBERLINE REALTY 541-432-1234
RUBY PEAK REALTY 541-432-3131
JUNCTION CITY HORSEPOWER REAL ESTATE 541-510-4601
KIMBERLY MOSSY OAK PROPERTIES CUPPER CREEK LAND CO. 541-519-6891
KLAMATH FALLS KELLER WILLIAMS REALTY SOUTHERN OR 541-591-5195
CENTURY 21 SHOWCASE REALTORS, INC. 541-882-2121
LA GRANDE RANCH-N-HOME REALTY 541-963-5450
LAKEVIEW HIGH COUNTRY REAL ESTATE 541-417-0250
MEDICAL SPRINGS AGRILANDS REAL ESTATE 541-853-1212
NORTH BEND CADWELL REALTY GROUP 541-740-9854
RE/MAX SOUTH COAST 541-290-1850
ONTARIO TOM PHILLIPS AGENCY 541-889-8401
PENDLETON WHITNEY LAND CO. 541-278-4444
SALEM AGRI-BUSINESS REAL ESTATE 503-371-6409
SILVERTON HARCOURTS NW OREGON REALTY GROUP 503-873-8600
WILSONVILLE WOLF PROPERTIES NW 503-682-1789

TEXAS
DIMMITT SCOTT LAND CO. 800-933-9698

WASHINGTON
BURLINGTON RE/MAX TERRITORY NW 360-755-9494
CHEHALIS CENTURY 21 LUND REALTORS 360-748-8619
SPOKANE FARMLAND COMPANY 509-624-4408
TOLEDO RE/MAX PREMIER GROUP 360-520-4810