

Don't Miss Another Issue of Capital Press!

Stay up to date on the latest agricultural and natural resources news.

ANYTIME ANYWHERE

1 year \$55

2 years \$100

EZ Pay \$4 month

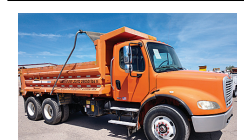


SUBSCRIBE TODAY!



1-800-781-3214
CapitalPress.com

210 Trucks
1981 International Dump Truck, Model 1954, single axle, CAT 3208, 10 speed, air tail gate, \$1500 Dallas, OR. 503-931-3724



2006 Freightliner M2 3 Axle Dump Truck, 385HP C11 CAT, 13 speed, 120k,000 Miles, 56kGVW, 16' bed with vibration. \$59,500 Over-time Equipment, LLC. 21338 Hwy 30, Filer ID. 83328, 208-734-3434



2009 Sterling Acterra with 10ft. dump bed, 3500 LB. Autocrane and arrowboard. 6.7 Cummins diesel, Allison AT. PS, AC, CC, PW. 23,000 GVW. 245/19.5 tires are like new. 50,495 ACTUAL MILES. One owner former large City vehicle that is in like new condition. Work ready, \$19,900. Located in Twin Falls ID. Call 208-613-0050



1991 GMC TopKick with 15,000lb. crane. 34ft. reach. 17,000 ACTUAL MILES. 3116 CAT Diesel and 5&2 transmission. One owner County truck from Southern California that has been well maintained. Very clean and runs, operates and drives like new. MILES ARE CORRECT! \$16,900. Located in Twin Falls ID. \$16,900. Call 208-613-0050.



2010 IHC WorkStar 7600 tandem axle with 24ft. reefer van and SUBZERO ThermoKing Diesel reefer unit. Roll up rear door with 6600 LB Lift-Gate. Cummins ISM Diesel 410HP. 10 Speed. Fuller Transmission. PS, AC, CC, PW, Jake. Locker rears. Near new 11/22.5 radials. One owner unit from the California Dept. of Education. This truck is in near new condition throughout. Beautiful and work ready, \$44,900. Located in Twin Falls ID. Call 208-613-0050



2012 IHC DuraStar cab and chassis. 165 in cab to trunnion. Up to 22ft. bed. DT 530 Diesel, 330HP. Allison Automatic. air bag rears. PS, AC, CC, PW, retarder. 70% radials. 145,000 ACTUAL MILES. Southern California truck that has been well maintained and is clean as new. BED READY. \$29,000. Located in Twin Falls ID. Call 208-613-0050



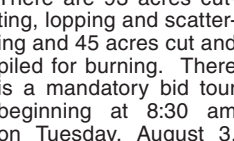
1994 GMC TopKick Single Axle dump truck. 25800GVW. CAT 3116 Diesel Allison Automatic. PS, cc. 5 yard bed. Like new radials. 143,000 ACTUAL MILES. Absolutely immaculate rust free truck from the California DOT. Looks runs and drives like it's brand new. \$19,900. Located in Twin Falls ID. Call 208-613-0050

Looking for a farm or ranch? VISIT **FarmSeller.com**

210 Trucks
1991 International Diesel Truck: 14ft flatbed dump, \$8500. Brookings, OR. 541-469-2068



107 Public Notices
The Harney SWCD is accepting bids on a juniper treatment project located near Trout Creek, approximately 28 miles north of Burns, OR. There are 93 acres cutting, lopping and scattering and 45 acres cut and piled for burning. There is a mandatory bid tour beginning at 8:30 am on Tuesday, August 3, 2021. Sealed bids are due either through hand delivery or by mail no later than noon, Wednesday, August 18, 2021. More information and bid packets can be obtained at the HSWCD office located 530 Hwy 20 South in Hines, or on the district website, HarneySWCD.org.



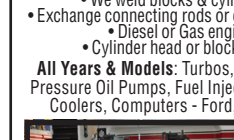
2007 International 9200 CAT C13, 410 Hp, 10 spd., auto shift, rear diff. lock, A/C, engine overhaul history.....\$27,900



2001 Volvo VNL Day cab, Detroit 12.7, 430Hp, A/C, Jakes, auto shift trans., 3.90's, double lockers.....\$24,900



2006 Kenworth T800 CAT C15, 10 spd., 3.55's A/C, dual stacks, 663,740 miles, CLEAN!.....\$37,000



Ford F900 Grain Truck 18' bed, 60" racks, tandem walking beam, diesel, 13 speed..\$19,900 \$254897-1

210 Trucks
CLASS 8 TRUCKS
509-534-9088



2007 International 9200 CAT C13, 410 Hp, 10 spd., auto shift, rear diff. lock, A/C, engine overhaul history.....\$27,900



2001 Volvo VNL Day cab, Detroit 12.7, 430Hp, A/C, Jakes, auto shift trans., 3.90's, double lockers.....\$24,900



2006 Kenworth T800 CAT C15, 10 spd., 3.55's A/C, dual stacks, 663,740 miles, CLEAN!.....\$37,000



Ford F900 Grain Truck 18' bed, 60" racks, tandem walking beam, diesel, 13 speed..\$19,900 \$254897-1

210 Trucks
CLASS 8 TRUCKS
509-534-9088



2007 International 9200 CAT C13, 410 Hp, 10 spd., auto shift, rear diff. lock, A/C, engine overhaul history.....\$27,900



2001 Volvo VNL Day cab, Detroit 12.7, 430Hp, A/C, Jakes, auto shift trans., 3.90's, double lockers.....\$24,900



2006 Kenworth T800 CAT C15, 10 spd., 3.55's A/C, dual stacks, 663,740 miles, CLEAN!.....\$37,000



Ford F900 Grain Truck 18' bed, 60" racks, tandem walking beam, diesel, 13 speed..\$19,900 \$254897-1

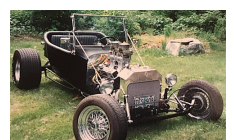
1st Place
The West's BEST Ag News!
• newspaper
• e-paper
• facebook
• twitter
• web
CapitalPress.com

Get all your agricultural and natural resources news in one place.

INSTANT EXCLUSIVE UNLIMITED

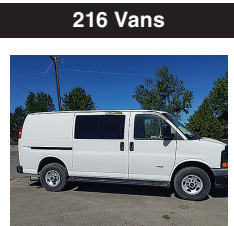
- NEWSPAPER
- E-PAPER
- MOBILE
- WEB
- EMAIL UPDATES

201 Antique/Classic Vehicles
1979 Ford Ranchero: last year built, red/white, 351 modified, \$9500.
1997 Red Suzuki X-90 T-top, 68,000 miles, manual 5 speed, excellent gas mileage, \$3995. Vancouver, WA. 360-213-4352



23-T Bucket Roadster: 350 Chevrolet 480HP, Saginaw 4 speed, Chrysler 3.23 rear end ratio, Volvo front suspension, 1300 miles, stereo, cassette, \$17,000. Raymond, WA. 360-208-3128

211 Pickups
1983 GMC 1/2 ton pickup with excellent body. Needs motor work, have extra parts, \$1495 OBO. Turner, OR. 503-930-1706



216 Vans
2009 GMC Savana 3500 WORK VAN with DURAMAX DIESEL. Allison Automatic. AC, PS, PW, CC. Divider wall. Near new Radial Tires. Spotlessly clean and runs and drives like new. Was used to transport documents. Freeway use only. One owner and work ready, \$6900. Located in Twin Falls ID. Call 208-613-0050



222 Truck/Auto Parts & Accessories
8ft by 8ft steel flatbed only, multipurpose, can use to haul hay or welding equipment, comes with sideboards, \$2,500 Juntura, OR. 541-604-5187

CUSTOM FABRICATION
We can meet your needs!
541-447-4555
PRO-LINE
FABRICATION
Prineville, OR 9723914-1

269 Boat/RV Storage
Glastron Tri-hull 15' 8" 75HP Mercury motor, good for skiing or fishing, never been in salt water, shedded, winch and fish finder, very clean condition, \$3500. Gales Creek, OR. 503-357-9775

Buying or Selling
Capital Press is here to help you!
1-800-882-6789
or FAX 503-370-4383
CapitalPress.com

210 Trucks
Trucks Trailers & Forcs
Pro Truck!
(253) 863-8782
Cell 206-510-4780
sales@pro-truck.com



2001 Great Dane 48' 2-axle roll top trailer 51' deck height, 107" IS height, 99" IS width.....\$14,500



2006 Freightliner 24' Van Truck, Cat C7 7.2U210 Hp, 4-spd. auto., 252" WB, 172,446 ECM miles.....\$16,950
www.pro-truck.com 5255537-1

222 Truck/Auto Parts & Accessories

YOU'RE THE BOSS!

We have been rebuilding and repairing differentials and transmissions for over 45 years. Our experience, our work ethic, and our relationship with our customers sets us apart from the rest. We talk to you about your unit and discuss options. Sometimes, just an inspection to know the gears are in good order is all that is needed. We have remain units on site...Ratco built! We also have the ability to order new units at competitive prices. When we talk to you about your differential or transmission, we are working with you to keep you informed of what might be needed. You are in charge and that's exactly how we like it. We are happy on the road doing what you need to do. We are ready to have you call us to talk about your unit or visit the shop. It's the experience and customer appreciation....and it makes all the difference.

RATCO TRUCK GEAR SPECIALISTS
3620 Olympic Street
Springfield, OR | 541-747-2849
5221421-1

R & G MACHINING AND ENGINE PARTS
COMPLETE DIESEL MACHINE SHOP AND TRUCK REPAIR
MULINO, OREGON • SHOP: 503-829-6038 • NATIONWIDE: 1-800-823-6038
We Absolutely, Positively Have The Best Remanufactured Engines Available Anywhere!
Huge Inventory • Expert Technical Assistance

ENGINES INSTALLED PRICING	REBUILT DIESEL L/B ENGINES																					
100,000 mile warranty when we install! Depending on applications: GM 6.2-6.5L, installed.....\$6,995 Ford 6.4 P/S, installed.....\$12,750 Ford 94-03 7.3 P/S, installed.....\$7,900 Cummins 88-02 5.9, installed.....\$8,400 Cummins 03 & Up, 5.9 C/R, installed.....\$9,450 Cummins 6.7, installed.....\$10,250	CUMMINS 3.9-4BT.....\$4,150 5.9 '88-'02.....\$4,250 5.9 '03 & up.....\$4,650 6.7 C/R.....\$4,950 FORD 6.0 P/S.....\$5,345 6.4 P/S.....\$6,045 6.7 P/S.....\$7,150 6.9-7.3 IDI.....\$4,650 7.3 P/S.....\$4,650 GM 6.6 Duramax.....\$6,050 6.2-6.5.....\$4,395 JOHN DEERE & IH Starting at.....\$5,995 KOBELCO, KOMATSU, HITACHI Starting at.....\$5,995																					
<ul style="list-style-type: none"> We grind and weld crankshafts and camshafts We weld blocks & cylinder heads Exchange connecting rods or connecting rod kits <ul style="list-style-type: none"> Diesel or Gas engine kits Cylinder head or block O-ringing 	<table border="1"> <thead> <tr> <th>PERKINS & ISUZU</th> <th>MITSUBISHI & NISSAN</th> <th>YANMAR & KUBOTA</th> <th>BOBCAT & SHIBAURA</th> <th>DOOSAN & TAKEUCHI</th> <th>MERCEDES</th> <th>HINO & IVECO</th> </tr> </thead> <tbody> <tr> <td>Starting at.....\$5,995</td> <td>Starting at.....\$5,995</td> <td>Starting at.....\$4,495</td> <td>Starting at.....\$3,995</td> <td>Starting at.....\$5,995</td> <td>Starting at.....\$8,995</td> <td>Starting at.....\$5,995</td> </tr> <tr> <td>Starting at.....\$5,995</td> <td>Starting at.....\$5,995</td> <td>Starting at.....\$5,995</td> <td>Starting at.....\$5,995</td> <td>Starting at.....\$5,995</td> <td>Starting at.....\$5,995</td> <td>Starting at.....\$5,995</td> </tr> </tbody> </table>	PERKINS & ISUZU	MITSUBISHI & NISSAN	YANMAR & KUBOTA	BOBCAT & SHIBAURA	DOOSAN & TAKEUCHI	MERCEDES	HINO & IVECO	Starting at.....\$5,995	Starting at.....\$5,995	Starting at.....\$4,495	Starting at.....\$3,995	Starting at.....\$5,995	Starting at.....\$8,995	Starting at.....\$5,995	Starting at.....\$5,995	Starting at.....\$5,995	Starting at.....\$5,995	Starting at.....\$5,995	Starting at.....\$5,995	Starting at.....\$5,995	Starting at.....\$5,995
PERKINS & ISUZU	MITSUBISHI & NISSAN	YANMAR & KUBOTA	BOBCAT & SHIBAURA	DOOSAN & TAKEUCHI	MERCEDES	HINO & IVECO																
Starting at.....\$5,995	Starting at.....\$5,995	Starting at.....\$4,495	Starting at.....\$3,995	Starting at.....\$5,995	Starting at.....\$8,995	Starting at.....\$5,995																
Starting at.....\$5,995	Starting at.....\$5,995	Starting at.....\$5,995	Starting at.....\$5,995	Starting at.....\$5,995	Starting at.....\$5,995	Starting at.....\$5,995																

IN BUSINESS SINCE 1975.

OVER 250 ENGINES & 450 CYLINDER HEADS IN STOCK!
We have a complete line of import diesels and obsolete diesels for your mini excavators or skidsteers. We work and repair all brands!

NEED ENGINE PARTS, GAS OR DIESEL - CHECK IT OUT:
WWW.EBAY.COM/STR/GRUMPYPERFORMANCECENTER
GRUMPYPERFORMANCE@GMAIL.COM

POWER FLEET & COMMERCIAL SALES
MEDIUM DUTY DEALER

2021 Chevrolet Silverado 2500HD Work Truck
Stock #P29094
Call for your business preferred price!

Jim Church 503-910-7784 jimc@powerautogroup.com	Delana Johnson 503-769-7100 delana@powerautogroup.com	Brian Heinrich 503-504-3629 brian@powerautogroup.com	Ryan Church 503-877-7102 ryan@powerautogroup.com
--	--	---	---

CHEVROLET BUSINESS ELITE
WWW.POWERAUTOGROUP.COM
503-769-7100

LOVELL Truck Sales 50th ANNIVERSARY
1-800-451-0012
(503) 266-5886
FAX (503) 266-6903
LOVELLTRUCKSALES.COM
LovellTruck@canby.com
680 SW 1st Ave (Hwy 99 E)
Canby, OR

2015 Freightliner 3-axle day cab , DD, Cummins 15X 400Hp, Fuller 10-spd., A/C, cruise, engine brake.....\$34,500	2006 Volvo VNL 3-axle day cab , Cummins 15X 400Hp, Fuller 10-spd., engine brake, PS, A/C, CC.....\$14,500
1996 Wabash 45' reefer trailer , Thermo King SB3 SR reefer, rail gate \$5,500 Also, 2001 Great Dane 48' reefer trailer. Carrier Phoenix reefer (non-working), nice rail gate \$5,500	2012 Freightliner 3-axle cab and chassis , Cummins ISC 8.3L/300hp, Allison auto., 40K lb. rears, 280" WB, PS, A/C, CC, exhaust brake, 161K miles.....\$39,500

RATCO
• Parts
• Gear Unit Rebuilding
• Machining
541-747-2849