

210 Trucks

2000 Kenworth T800, heavy haul specs, 673,000 miles, 550HP ISX, 18 speed, 46 rears, 4 way lockers, wet kit, \$35,000 lone, OR. 541-701-7757



2001 IHC 2574 tandem axle cab and chassis. N-14 Cummins, 13 speed. 112,000 ACTUAL MILES. Jake, PS, AC, PS. Traction lock. 164" cab to trunnion. Double frame full length. Hendrickson spring rears. 64,000 GVW. Near new 22.5 Radial tires. Former California DOT truck that has had excellent maintenance. Runs, drives and operates like new. NO RUST! \$26,900. Located in Twin Falls ID. Call 208-613-0050

Subscribe Now To Capital Press And Get Connected Directly To Regional Agricultural News! Call 1-800-781-3214

210 Trucks



2008 Peterbilt 340 equipment hauler PX8 315HP, 10 speed transmission, 13,000 drop axle, air ride suspension, 278,000 original miles, auxiliary diesel pump to fuel equipment, in excellent condition, \$37,500. Shingle Springs, CA. 530-957-0589



1988 Kenworth T800 with 21ft. roller deck dump bed. NTC Cummins Diesel. 13 speed. Jake, AC, PS. 236K MILES. 70% 11/225 radials. Very clean and well maintained original owner truck that is rust free and work ready, \$15,900. Located in Twin Falls ID. Call 208-613-0050

210 Trucks



1979 International Cabover Big Cam 350, 13 speed, wet kit. 660,000 original miles, \$8,500. Atwater, CA. 209-604-1342



1991 Ford 8000 Fire Engine. 3208 Turbo Cat Diesel. Allison AT. Hale Power Shift pump and apparatus. 1000 GPM @150 PSI. 1200 Gal. Tank. Water Cannon, draft hard hose and ladders and all emergency equipment. Former County truck that is clean as new and operates the same, \$9900. Located in Twin Falls, ID. Call 208-613-0050

IF YOU HAVE A BEEF - sell it in next week's Capital Press!

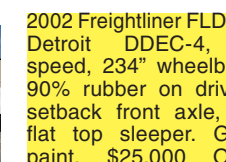
210 Trucks



2001 Freightliner Transfer Dump Truck. 15 yard main with HiLift airgates on truck and trailer. CAT C12 Diesel. 410HP. 13 speed. Jake Brake, CC, AC, PW. 80% 11/22.5 radials on alloy wheels. This one owner truck is spotlessly clean and has been well maintained. NO RUST, NO DAMAGE. Runs drives and operates like new, \$29,900. Located in Twin Falls ID. Call 208-613-0050

THIS AD SPACE could be yours!
1-800-882-6789 or FAX 503-370-4383 CapitalPress.com

210 Trucks



2002 Freightliner FLD120: Detroit DDEC-4, 18 speed, 234" wheelbase, 90% rubber on drivers, setback front axle, 70" flat top sleeper. Good paint. \$25,000 OBO. Pictures Available. Lewiston, ID. 208-743-8274



1999 IHC 2674 tandem dump truck. 15 yard. 105,073 ACTUAL MILES. 5000 hours. Cummins N-14 Diesel. Fuller 13 speed. Jake. PS, AC, CC, PW. Rear locker differentials. Hendrickson spring rears. 18,000 Lb. front axle. 70% 22.5 radials. One owner former State truck that has had excellent fleet maintenance, is clean and runs and operates like new. \$34,000. Located in Twin Falls ID. Call 208-613-0050

CAPITAL PRESS CLASSIFIEDS GET RESULTS!

210 Trucks



1999 IHC Single Axle dump truck. 7 to 8 yard bed. Load tarp. DT466 Diesel. Allison 6 speed auto transmission. PS, AC, CC, 159,000 ACTUAL MILES. 80% 22.5 radials. RUST FREE. The original black paint on the frame still shines like new! Immaculate former State truck. One of a kind, \$22,900. Located in Twin Falls ID. Call 208-613-0050

Buying or Selling
Capital Press is here to help you!
1-800-882-6789 or FAX 503-370-4383 CapitalPress.com

210 Trucks

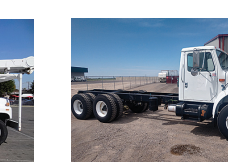


1994 GMC TOPKICK with ALTEC AM855 62 FT. WH. manlift. 40,000 ACTUAL MILES. CAT 3126 DIESEL. Allison Automatic. PS, AC. Former city truck from the Los Angeles area. Well maintained and clean as new and operates, runs and drives like a new truck, \$19,900. Located in Twin Falls ID. Call 208-613-0050

1987 Kenworth W90: L10 Cummins, 10 speed, Hendrickson, wet kit, 22ft stainless grain bed, tarps, hoist, Westfield drill fill. Silage sides, swivel tail gates, \$23,000. Klamath Falls, OR. 541-273-1931

Farm Seller.com AMERICA'S FARM AND RANCH DATABASE

210 Trucks



1997 INTERNATIONAL 4900 Cab & Chassis, mech DT466, 6 speed Allison, 21,000 miles, 2300 hours, 143" cab to trunnion, 18' total \$26,500 Overtime Equipment, LLC. 21338 Hwy 30 Filer, ID. 208-734-3434



2002 Peterbilt 357 Cab & Chassis, 400HP ISM Cummins, 10 speed, double frame, 59,000GVW, 172" cab to trunnion, 22' total, wet kit, \$49,500 Overtime Equipment LLC, 21338 Hwy 30, Filer ID, 83328; 208-734-3434

1-800-882-6789
Classified Line Ads Get Results - CapitalPress.com

CAPITAL PRESS
INSTANT EXCLUSIVE UNLIMITED
NEWSPAPER • E-PAPER • MOBILE • WEBSITE • E-MAIL UPDATES
Subscribe today. 1-800-882-6789 • CapitalPress.com

Marge! I just saw John's story and picture in Capital Press newspaper!

I know! Charlie just saw it on his cell phone and called from the field. I've got the article up on my computer right now.

Kelly, John's in Capital Press ...

DON'T MISS ANOTHER ISSUE OF

Capital Press
EMPOWERING PRODUCERS OF FOOD & FIBER

We understand the traditions and heritage of farming.

- Agricultural and natural resource news along with special sections targeting specific niches
- Innovations and trends
- Ads for equipment, livestock, supplies, property and more!

1 year \$55.00
 2 years \$100.00
 \$4.00/month EZ Pay
 Outside US, call for quote.

VISA
 MasterCard
 Check

Name _____
 Address _____
 City _____ State _____ Zip _____
 Phone (_____) _____
 Card # _____ Exp. _____ Signature _____

Capital Press Mail to: Capital Press, P.O. Box 2048, Salem, OR 97308
 1-800-781-3214 • CapitalPress.com

SUBSCRIBE TODAY
1-800-781-3214
CapitalPress.com
Miss a week, miss a great deal!