

899 Heavy & Indust. Eq.



2012 T-190 Bobcat Compact Track Loader: 584 hours, heat, A/C, foot controls, 2 buckets. Great shape, \$60,000. Junction City, OR. 503-877-8200



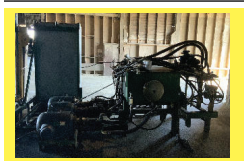
2014 Genie Manlift Z-45/25J IC: 4WD, 157 hours, Deutz diesel. Excellent condition, \$70,000. Junction City, OR. 503-877-8200

REPLACEMENT DECAL SETS

Construction, Forestry & Ag Equipment. Fast, Knowledgeable, Reliable Service. 215-536-5339 email: info@CustomServicesCompany.com



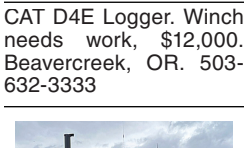
Dynapac CA25D Vibratory Roller, 84" Smooth Drum, ROPS Canopy, CAT 3208 Diesel, 4260 hours. Asking \$22,500. Sandy, OR. Call Pepe: 503-544-3232; Call Pat: 503-407-9062



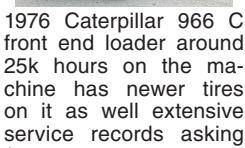
Diesel Air Compressors, most are towable, a few skids, hours range from 130 to 3000, prices range from \$7,500 to \$12,500. Many to choose from. Overtime Equipment, LLC. 21338 Hwy 30, Filer ID: 83328. 208-734-3434



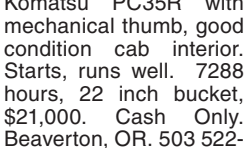
Hydraulic Power Unit 3 phase electric motor. Driven pumps with manifold and valves. Self contained on skid with power panel, additional new pumps and motors and valves to go with. Salem, OR. 503-910-4010; Westernag@msn.com



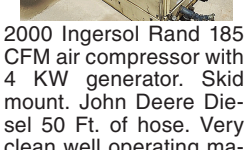
CAT D4E Logger. Winch needs work, \$12,000. Beaver Creek, OR. 503-632-3333



1976 Caterpillar 966 C front end loader around 25k hours on the machine has newer tires on it as well extensive service records asking \$25,000. Redmond, WA. 425-883-0821



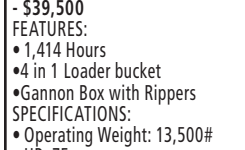
Komatsu PC35R with mechanical thumb, good condition cab interior. Starts, runs well. 7288 hours, 22 inch bucket, \$21,000. Cash Only. Beaverton, OR. 503-522-6512



1948 John Deere model D, electric start, good tires, good paint, Salem, OR. 503-393-1347



2000 Ingersoll Rand 185 CFM air compressor with 4 KW generator. Skid mount. John Deere Diesel 50 Ft. of hose. Very clean well operating machine from a large California County, \$7900. Located in Twin Falls ID. Call 208-613-0050



John Deere 50D Mini Excavator - \$29,500 FEATURES: •Thumb •Auxiliary Hydraulics •24" Bucket SPECIFICATIONS: •Operating Weight: 10,500# •HP: 39



899 Heavy & Indust. Eq.

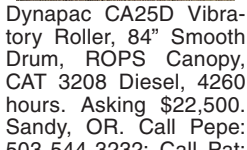
2-1/2 yard 4WD Scoop-mobile loader with Cummins engine, \$3900. HD6 CAT with 371 engine, drum and blade canopy, \$4900 OBO. Both ready to work. Turner, OR. 503-930-1706



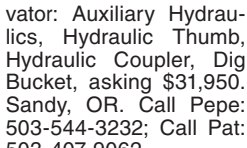
John Deere 348 Baler: like new, very little use, loaded, \$20,500. Estacada, OR. 503-313-2681, 503-631-7029

WANTED: 10K HD #2 & 10K #3 HD Nursery Pots .clean. Salem, OR. Call Mark 503-932-3920

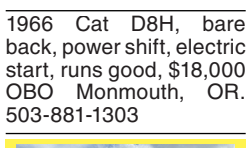
USED NURSERY CONTAINERS: Used, but reusable nursery containers. All sizes. Inventory changes daily. Call for current availability and prices. Sawyer Farms, Scio OR. 503-769-3417, juddsfarm@wvi.com (also wanted: used containers)



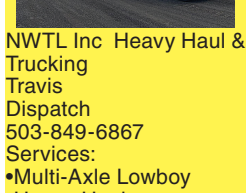
John Deere 1620 Wide Area Mower, 3153 Hours, Diesel, 4WD Asking \$8500. Sandy, OR. Call Pepe: 503-544-3232; Call Pat: 503-407-9062



John Deere 590D Excavator: Auxiliary Hydraulics, Hydraulic Thumb, Hydraulic Coupler, Dig Bucket, asking \$31,950. Sandy, OR. Call Pepe: 503-544-3232; Call Pat: 503-407-9062



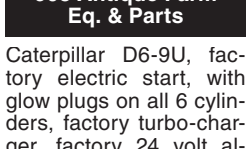
160C LC John Deere Excavator, Excellent Condition, \$55,000 John-Day, OR. 541-575-2274



1966 Cat D8H, bare back, power shift, electric start, runs good, \$18,000 OBO Monmouth, OR. 503-881-1303



NWTL Inc Heavy Haul & Trucking Travis Dispatch 503-849-6867 Services: •Multi-Axle Lowboy •Heavy Haul •Heavy Equipment Recovery •Equipment Transport •Agriculture Equipment •Construction Equipment •Forestry Equipment •All Lower 48 States Hourly and Mileage Rates Available, Sandy, OR.



Dresser TD7G Dozer, 6 way blade, multi shank ripper (3), 2006 hours, Asking \$23,500. Sandy, OR. Call Pepe: 503-544-3232; Call Pat: 503-407-9062



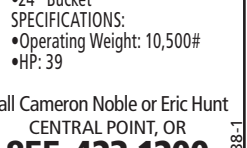
Caterpillar D6-9U, factory electric start, with glow plugs on all 6 cylinders, factory turbo-charger, factory 24 volt alternator, hydraulic pump with 6 outlets, 28" pads, 5 speed transmission, 2 reverse speeds, built in 1957, 63 years old, low hours on meter, \$5500 Weston, OR. 850-892-5766



1948 John Deere model D, electric start, good tires, good paint, Salem, OR. 503-393-1347



2000 Ingersoll Rand 185 CFM air compressor with 4 KW generator. Skid mount. John Deere Diesel 50 Ft. of hose. Very clean well operating machine from a large California County, \$7900. Located in Twin Falls ID. Call 208-613-0050



John Deere 50D Mini Excavator - \$29,500 FEATURES: •Thumb •Auxiliary Hydraulics •24" Bucket SPECIFICATIONS: •Operating Weight: 10,500# •HP: 39

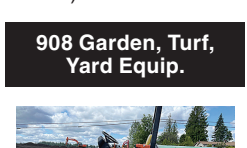
905 Antique Farm Eq. & Parts

WANTED: parts for Hesston PT7. Parts for Massey Ferguson Baler 228. Battle Ground, WA. 503-318-8481

907 Nursery Equip. & Supplies FRESH SAWDUST: Consistently fair pricing. 9 Unit Loads Now Available Forest-Grove, OR. For pricing call 503-849-0216

WANTED: 10K HD #2 & 10K #3 HD Nursery Pots .clean. Salem, OR. Call Mark 503-932-3920

USED NURSERY CONTAINERS: Used, but reusable nursery containers. All sizes. Inventory changes daily. Call for current availability and prices. Sawyer Farms, Scio OR. 503-769-3417, juddsfarm@wvi.com (also wanted: used containers)



John Deere 1620 Wide Area Mower, 3153 Hours, Diesel, 4WD Asking \$8500. Sandy, OR. Call Pepe: 503-544-3232; Call Pat: 503-407-9062



John Deere 590D Excavator: Auxiliary Hydraulics, Hydraulic Thumb, Hydraulic Coupler, Dig Bucket, asking \$31,950. Sandy, OR. Call Pepe: 503-544-3232; Call Pat: 503-407-9062

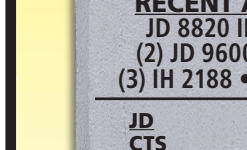
160C LC John Deere Excavator, Excellent Condition, \$55,000 John-Day, OR. 541-575-2274

1966 Cat D8H, bare back, power shift, electric start, runs good, \$18,000 OBO Monmouth, OR. 503-881-1303

NWTL Inc Heavy Haul & Trucking Travis Dispatch 503-849-6867 Services: •Multi-Axle Lowboy •Heavy Haul •Heavy Equipment Recovery •Equipment Transport •Agriculture Equipment •Construction Equipment •Forestry Equipment •All Lower 48 States Hourly and Mileage Rates Available, Sandy, OR.



Dresser TD7G Dozer, 6 way blade, multi shank ripper (3), 2006 hours, Asking \$23,500. Sandy, OR. Call Pepe: 503-544-3232; Call Pat: 503-407-9062



Caterpillar D6-9U, factory electric start, with glow plugs on all 6 cylinders, factory turbo-charger, factory 24 volt alternator, hydraulic pump with 6 outlets, 28" pads, 5 speed transmission, 2 reverse speeds, built in 1957, 63 years old, low hours on meter, \$5500 Weston, OR. 850-892-5766



1948 John Deere model D, electric start, good tires, good paint, Salem, OR. 503-393-1347

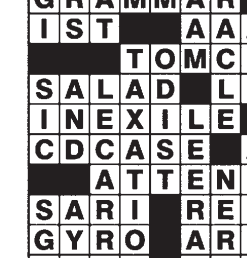


2000 Ingersoll Rand 185 CFM air compressor with 4 KW generator. Skid mount. John Deere Diesel 50 Ft. of hose. Very clean well operating machine from a large California County, \$7900. Located in Twin Falls ID. Call 208-613-0050

John Deere 50D Mini Excavator - \$29,500 FEATURES: •Thumb •Auxiliary Hydraulics •24" Bucket SPECIFICATIONS: •Operating Weight: 10,500# •HP: 39

Case 570 MXT Skid Loader - \$39,500 FEATURES: •1,414 Hours •4 in 1 Loader bucket •Gannon Box with Rippers SPECIFICATIONS: •Operating Weight: 13,500# •HP: 75

John Deere 50D Mini Excavator - \$29,500 FEATURES: •Thumb •Auxiliary Hydraulics •24" Bucket SPECIFICATIONS: •Operating Weight: 10,500# •HP: 39



John Deere 50D Mini Excavator - \$29,500 FEATURES: •Thumb •Auxiliary Hydraulics •24" Bucket SPECIFICATIONS: •Operating Weight: 10,500# •HP: 39

911 Hay Equip.



John Deere 348 Baler: like new, very little use, loaded, \$20,500. Estacada, OR. 503-313-2681, 503-631-7029



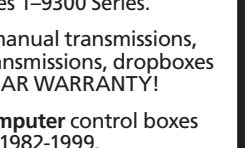
Hesston 1459 Mower Conditioner. Close to new condition, \$9200. Estacada, OR. 503-313-2681, 503-631-7029

WANTED: parts for Hesston PT7. Parts for Massey Ferguson Baler 228. Battle Ground, WA. 503-318-8481

New Holland 489 Haybine, 9ft cut, hydraulic swing, \$2500. John Deere 350 3 point rake, \$500. John Deere 336 Twine Baler, \$3000. Jefferson, OR. 541-327-3580

WANTED: parts for Hesston PT7. Parts for Massey Ferguson Baler 228. Battle Ground, WA. 503-318-8481

Retiring HAY EQUIPMENT: Hay Squeeze/ dozer 4x4 combo, diesel, on tires, \$18,500. Deutz Tedder, \$1,400. Ford Rollover Plow, \$2,800. John Deere Land plane, \$3,700. Single Darf Rake, \$900. John Deere Seeder, \$800. Small Ripper. Disc. Packer. Klamath Falls, Oregon. John 541-892-1948

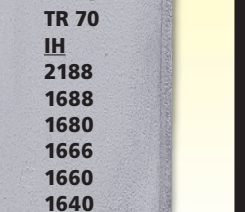


Sitrex HM/300 Hay Rake, used one year, like new condition, \$4,500 OBO. Rainier, WA. 360-446-7763

New And Used Parts: for all models New Holland bale wagons. Largest Inventory in North America. Sod Busters Sales, Polson, MT. 877-735-2108 or 406-883-2118

Large Supply of Rebuilt New Holland Bale Wagons: Also buying New Holland bale wagons. Sod Busters Sales, Polson, MT. 406-883-2118

#1 Balewagons: Buy, Sell, New Holland 2&3 wide self-propelled, pull-type models, parts, tires, manuals. Caldwell, ID. 208-880-2889 www.balewagon.com



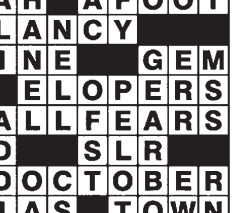
Hay Rakes: John Deere 700, good condition, field ready, \$5900. Emmett, ID. 208-841-1751

RCO Baits Gophers • Squirrels Voles • Moles Dealer Locator 1-800-214-2248 Harrisburg, OR 5219718-1

914 Potato/Sugar Beet Equip. Lockwood 574 harvester. Excellent condition. Harvested less than 1,000 acres. Lockwood 606P Aircup planter. Field ready. Double L 831 piler. New belt, rollers, remote control and hydraulic valves. Call for more info. Moses Lake, WA. 509-750-1752

Lockwood 4630 3 row harvester, clod table, small chain, set to dig small potatoes, \$15,000 Toppenish, WA. 509-952-4457

Lockwood 4500 2 row harvester, clod table, small chain, set to dig small potatoes, \$10,000 Toppenish, WA. 509-952-4457



2014 Flory 7656 diesel sweepers. Excellent condition, \$35,950 each. Oakdale, CA. Call or text Henry at 209-531-8398.

911 Hay Equip.



Class Rollant 340 Round Baler. Approximately 6,000 bales, stored inside. Excellent Condition, \$19,000 OBO. Nehalem, OR. 503-322-0265

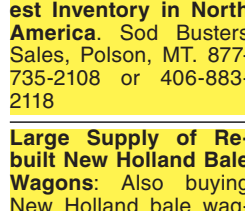
New Holland Disc Mower Model 463: heavy duty, 6 disc, new rock guards, \$4900. Sandy, OR. Please Leave Message. 503-668-7326

WANTED: parts for Hesston PT7. Parts for Massey Ferguson Baler 228. Battle Ground, WA. 503-318-8481

New Holland 489 Haybine, 9ft cut, hydraulic swing, \$2500. John Deere 350 3 point rake, \$500. John Deere 336 Twine Baler, \$3000. Jefferson, OR. 541-327-3580

WANTED: parts for Hesston PT7. Parts for Massey Ferguson Baler 228. Battle Ground, WA. 503-318-8481

Retiring HAY EQUIPMENT: Hay Squeeze/ dozer 4x4 combo, diesel, on tires, \$18,500. Deutz Tedder, \$1,400. Ford Rollover Plow, \$2,800. John Deere Land plane, \$3,700. Single Darf Rake, \$900. John Deere Seeder, \$800. Small Ripper. Disc. Packer. Klamath Falls, Oregon. John 541-892-1948

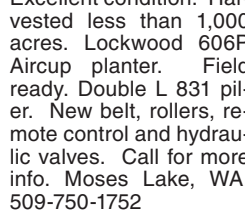


Sitrex HM/300 Hay Rake, used one year, like new condition, \$4,500 OBO. Rainier, WA. 360-446-7763

New And Used Parts: for all models New Holland bale wagons. Largest Inventory in North America. Sod Busters Sales, Polson, MT. 877-735-2108 or 406-883-2118

Large Supply of Rebuilt New Holland Bale Wagons: Also buying New Holland bale wagons. Sod Busters Sales, Polson, MT. 406-883-2118

#1 Balewagons: Buy, Sell, New Holland 2&3 wide self-propelled, pull-type models, parts, tires, manuals. Caldwell, ID. 208-880-2889 www.balewagon.com



Hay Rakes: John Deere 700, good condition, field ready, \$5900. Emmett, ID. 208-841-1751

RCO Baits Gophers • Squirrels Voles • Moles Dealer Locator 1-800-214-2248 Harrisburg, OR 5219718-1

914 Potato/Sugar Beet Equip. Lockwood 574 harvester. Excellent condition. Harvested less than 1,000 acres. Lockwood 606P Aircup planter. Field ready. Double L 831 piler. New belt, rollers, remote control and hydraulic valves. Call for more info. Moses Lake, WA. 509-750-1752

Lockwood 4630 3 row harvester, clod table, small chain, set to dig small potatoes, \$15,000 Toppenish, WA. 509-952-4457

Lockwood 4500 2 row harvester, clod table, small chain, set to dig small potatoes, \$10,000 Toppenish, WA. 509-952-4457



2014 Flory 7656 diesel sweepers. Excellent condition, \$35,950 each. Oakdale, CA. Call or text Henry at 209-531-8398.

920 Tractors



Like new! 409 hours. 2016 Hydrostatic Massey Ferguson 2705E with loader, 7ft hydraulic angle/tilt blade, \$26,000 cash only. Beaverton, OR. 503-522-6512



1956 John Deere 70LP Row Crop, \$7,000. Banks, OR. 503-277-8978



Farmall Cub Lo-Boy: rototiller, creeper drive, fast hitch. Farmall 140, 2 valve, cultivator, middle & rear, side sickle mower, fast hitch, \$3500 each. Coeur D'alene, ID. 208-667-8833



2007 Kubota MX5000: 50HP diesel, loader, huge backhoe, tiller, owner's manuals, less than 400 hours, \$30,000. 18ft flatbed also available. Hillsboro, OR. Call/text 503-930-1359

New Holland T8.275 Tractor with Duals. Approximately 2750 hours; original owner. 1 pair Rr 500lb weights, 22 front weights with bracket. Cab suspension, Navigation 11 controls. Transmission 19/4 powerlifting; Forward HD suspended with DL; DEF system bypassed. Great condition. Chiloquin, OR. 509-961-9693

M4-071 Kubota 60 PTOHP with cab, 1100 hours, very clean, only used for spraying and mowing, \$32,000. Zillah, WA. 509-314-9227

THIS AD SPACE could be yours! 1-800-882-6789 or FAX 503-370-4383 CapitalPress.com

923 Farm Equipment

920 Tractors



Ford 3930 Tractor, 7410 Front Loader, Wood Model BB720 Brush Bull, Meter Reads 1099 Hours, 3 Point, Rear PTO, Asking \$22,500. Sandy, OR. Call Pepe: 503-544-3232; Call Pat: 503-407-9062



WANTED: RV space for parking and living. Less than 1 hour drive from Portland. \$500/ month + utilities. Call Israel 503-521-6669



Field ready, very clean 2017 Claas 840 with only 64 hours. Kernel processor and comes with 2019 RU450, \$350,000. Woodburn, OR. 503-710-8535



NEW IA Header Trailers. Adjustable Bunk Mounts, 8 hole wheels and radial tires. •20ft \$5,495 •25ft. \$5,995 •30ft. \$6,495 •35ft. \$7,495 •40ft. \$7,995 Bend, OR. 541-548-7185; mtcsales.net



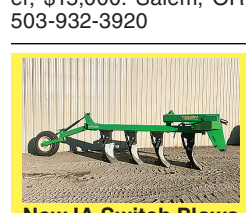
1978 Gleaner N7 Combine, Pea and Wheat headers, very good condition, \$2800. Tekoa, WA. 509-284-7913



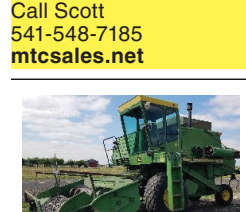
920 Tractors

923 Farm Equipment

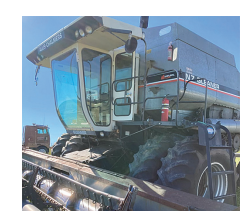
200 gallon spray rig, \$500. Woods BB 720, \$2000. Allis Chalmers, 8ft disc, \$500. Jefferson, OR. 541-327-3580



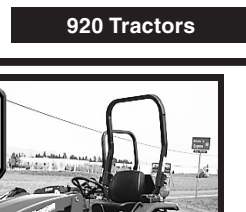
Windrow pickup & 3x25 ft sorting belt; shade frame, generator power, \$15,000. Salem, OR. 503-932-3920



New IA Switch Plows •3 Bottom \$9,995 •4 Bottom \$10,995 •5 Bottom \$12,995 •6 Bottom \$19,995 •7 Bottom \$21,995 Poly Wear Armor HD Components Trip Bottoms Bend, OR. Call Scott 541-548-7185 mtcsales.net



7700 John Deere Combine Good condition stored under cover we used it for grass seed and clover great machine for the price, \$5,999. Halsey, OR. 541-974-9701



1978 Gleaner N7 Combine, Pea and Wheat headers, very good condition, \$2800. Tekoa, WA. 509-284-7913



24 - 80 hp., 4WD, Compact Syncro-Shuttle, Hydro 24, 28, 35, 47 hp

THE TRACTOR STORE (541) 342-5464 5450 W. 11th, EUGENE, OR

BIG TRACTOR PARTS, INC. ~ GEARED FOR THE FUTURE ~ STEIGER TRACTOR SPECIALIST 1. We are your source for new & used Steiger drivetrain parts Series 1-9300 Series. 2. We rebuild Spicer manual transmissions, Fugi power shift transmissions, dropboxes & axle with ONE YEAR WARRANTY! 3. We now rebuild computer control boxes for Steiger tractors 1982-1999. 800-982-1769 www.bigtractorparts.com

COMBINE HEAVEN R.I.P. Reasonable Implement Pricing See Our Combine Dance on YouTube! FRESH IN FOR PARTS ONLY COMBINES RECENT ARRIVALS JD 8820 II • JD 9610 (2) JD 9600 HILLSIDES (3) IH 2188 • IH 1688 4X4

NYSSA TRACTOR & IMPLEMENT Celebrating 31 years in the agricultural machinery business. Our yard has 5 miles of road, with machinery on both sides. FREE Tours Given Daily. Call Toll Free: (833) 372-4020 www.nyssatractor.com sales@nyssatractor.com Nyssa, OR

908 Garden, Turf, Yard Equip. 908 Garden, Turf, Yard Equip.

Your ad here! Call 800-882-6789

Crossword puzzle grid with words like AMIS, UBOAT, SMOG, NARC, RIFLE, TORE, THEHUNT, FOR URGE, PIN, OTELLO, THESUMOF, SITCOM, GRAMMAR, CALICOS, IST, AAAH, AFOOT, TOMCLANCY, SALAD, LINE, GEM, INEXILE, ELOPERS, CDCASE, ALLFEARS, ATTEND, SLR, SARI, REDOCTOBER, GYRO, ARIAS, TOWN, TEEN, TONKA, AXES

NORTON'S WELDING 866-628-2497 541-569-2436 • 541-398-2900 Lostine, OR • www.nortonwelding.com FORESTRY Caterpillar 527 tracked skidder, swinging boom, new undercarriage, new engine, new injection pump... \$210,000 Caterpillar 527 tracked skidder, swinging boom, snow blade, new undercarriage... \$220,000 Caterpillar 140M2 grader, AWD, front lift group, w/ wing... \$150,000 Hitachi ZX370-F w/ Waratah