

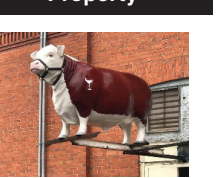
354 Auction Sales

Blowout Auction!
Sunday, July 18th at 10am
395 E Main Hermiston, OR 97838

Columbia Outdoor
Guns, tools, electronics, outdoor clothing, and hunting gear. Snap on, S&K, Proto, and Craftsman sockets, wrenches, and air tools. Husqvarna cut saw, corded and electric tools. Welding helmets and gauges. Marine CB, Car audio equipment, DVDs and Blu-ray movies, Games for all consoles. Hunting, fishing, and camping gear. Tents, fly poles, and fishing reels. Military outfits and gear, motorcycle equipment. Brand new clothing River West windproof/ water-proof Gortex jackets and pants.

- GUNS:**
- Savage 110 7mm mag
 - Savage 111 30-06
 - Savage axis 243 Win mag in box
 - Savage 11 243 Win mag *2
 - Remington 700 7mm Rem mag
 - Remington 700 300 Win ultra mag with Leupold scope
 - Remington 700 223
 - Citadel Bosshog 12 ga new in box
 - Winchester 620 300 win mag
 - Winchester 70 338 Win mag with Leupold scope
 - Kimber 84m 22-250 Rem varmint red field scope 3x9
 - Browning bar 7mm Rem Leupold scope
 - Browning x bolt 7mm w rings
 - Ruger 7mm mark II 338 win mag Leupold scope vari-xII 3x9
- Ford's Auction
Ford Bonney 541-561-5798
Colby Alexander: 541-314-3153

525 Commercial Property

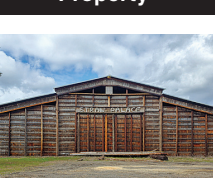


Own an established & profitable Butcher Shop in rural Eastern WA. Garfield Meat's was established in 1952. Since then, the shop has been producing quality meat with no interruptions and only 3 owners, with the current owners celebrating 25 years. The market has a strong State wide customer base, and the current owner is willing to stay on staff, to assure the customers the same great quality while you acclimate into ownership. The business has a great reputation with more potential growth for new owners.

- Approximately 2000sqft, brick building
- 2 massive walk-in freezers
- 4 walk-in coolers (1 new in 2020)
- Rail system to easily move product from butcher room to cutting floor
- Shrink Wrap Hot Knife Wrapping & Labeling System
- Tumbler
- Smokehouse
- Carcass breaking saws
- Slicers, Cuber, Stuffer, Grinder, Mixer
- Slaughter Truck
- Horse Trailer
- Completely Turn-Key \$420,000.

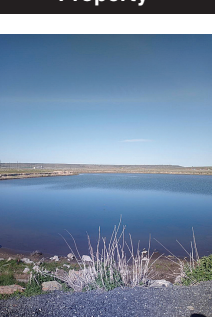
Garfield, WA. 509-288-0046
www.garfieldmeatshop.com. windytevin@gmail.com

525 Commercial Property



Straw/ Hay Warehouse space for sale! 11,800sqft total building space with 25' eave height & rock base. Space is two buildings on two tax lots totaling 10 ACRES. Located on Hwy 20, south of Lebanon, OR. Asking 1,200,000. MLS#775291 Contact Bill Flesher, Licensed OR. Broker & Commercial Specialist: 541-905-3258 or email BillF@lauragillott.com.

540 Recreational Property



83 Acres 7 miles West of Burns, OR. 1884 water right on entire parcel. With 30 acres of Native Meadows. Water supplied from numerous year round ground springs & 5.5 acre spring fed pond stocked with bass & blue gill. Best duck & goose hunting area in Harney County. Year round gravel road to property. Excellent homesite overlooking creek. There is a domestic well & pumphouse. Plus 2 small outbuildings on property. Broker owned, \$360,000. Possible Owner Financing. Call for more details. 541-589-2068

540 Recreational Property

PUBLISHER'S NOTICE

All real estate advertising in this newspaper is subject to the Fair Housing Act which makes it illegal to advertise "any preference, limitation or discrimination based on race, color, religion, sex, handicap, familial status or national origin, or any intention to make any such preference, limitation or discrimination." Familial status includes children under the age of 18 living with parents or legal custodians, pregnant women and people securing custody of children under 18.



This newspaper will not knowingly accept any advertising for real estate which is in violation of the law. Our readers are hereby informed that all dwellings advertised in this newspaper are available on an equal opportunity basis. To complain of discrimination call HUD toll-free at 1-800-669-9777. The toll-free number for the hearing impaired is 1-800-927-9275.

A picture is worth a 1,000 words

Add a full color photo to your print and online ads today by calling **800-882-6789**

Capital Press
CapitalPress.com

546 Rentals, Leases

WANTED RV Parking

WANTED: RV space for parking and living. Less than 1 hour drive from Portland. \$500/ month + utilities. Call Israel 503-521-6669

FOR LEASE
Vegetable Processing Facility and 2 Storage Buildings Hermiston Oregon. Processing Facility approximately 58,000 sq. ft. with office, lunch room, receiving area, packing room, two large cold rooms, shop/parts room, staging room, shipping/ loading dock for three (3) trucks, scales); 2 Storage Facilities (30,000 sq. ft. facility with dehumidification; 60,000 sq. ft. facility with computerized refrigeration and dehumidifiers), private railroad spurs for transportation, water rights (well), septic, electricity, water lagoon for waste water. Will possibly rent processing facility and storage facilities separately. Contact Larry Blunck at 503-656-1654 or larry@bluncklaw.com

FOR RENT Bend, OR

For Rent 30 Irrigated Acres under pivot. Bend, OR. Long term/ short term. 1st year FREE with clean up. 503-330-8991

"Both Tractors SOLD! Thanks!"
Jim Petterson • Gig Harbor, Wash.
Sell yours too in Capital Press!

546 Rentals, Leases

FOR LEASE: 175 Acres. Newberg and Chapman soil. 1st and 3rd water rights on South Santiam River. Buried main line. Above ground main line, 4000 ft of 3" pipe. 30HP and 60HP pumps. Traveler irrigation sprinkler. Currently in peas. Lebanon, OR. 503-819-6209; brianpaulod89@gmail.com

561 Ranches

for RANCHES & FARMS call Crater Lake Realty, Inc.
Linda L. Long, Broker
541-891-5562
Chiloquin, OR
linda@craterlakerealtyinc.com • craterlakerealtyinc.com



NE OREGON

194 AC timber, meadows N of Elgin. Custom home, 2nd home, outbldgs & more. This setting & view is unbelievable, private yet not remote. Off grid with every creature comfort possible. Wildlife and so much more. A must see. Call for complete details. **Only \$1,250,000.**

BEAVER CREEK, OREGON

7,300 deeded acre ranch in one block. Timber, range and irrigated meadows with 2 miles of Powder River thru ranch. Excellent hunting and priced to sell. **\$6,000,000.**

Intermountain Realty, Inc.
1425 Campbell Street
Baker City, OR 97814
Intermountainland.com
541.523.4434

CAPITAL PRESS LINE CLASSIFIEDS

CALL TOLL-FREE: 1-800-882-6789 / OR ONLINE 24/7/365
CapitalPress.com

Capital Press Ag Weekly It works!

"I'm amazed by the number of people that see it (my Capital Press ad). For me, it's consistent. It's working!"
R.K. of Oregon

Capital Press
800-882-6789
CapitalPress.com

Capital Press Ag Weekly It works!

"My item was listed on other sites for well over a year. So, I listed it with Capital Press for two weeks, and boom, it sells. My Capital Press ad really worked- and quickly!"
Marsha P. Washington State

Capital Press
Place your ad today!
800-882-6789
CapitalPress.com

A picture is worth a 1,000 words

Add a full color photo to your print and online ad.

Capital Press
800-882-6789
CapitalPress.com

561 Ranches

IDAHO RANCHES & FARMS

WE SPECIALIZE IN TAX-DEFERRED EXCHANGES

Bob Jones, Broker
208-308-6060

Mark Jones, Assoc. Broker
208-308-3030

208-733-0404
1766 Addison Avenue E,
Twin Falls, ID 83301
www.RJREALTY.com

564 Farms

MetLife Investment Management

AGRICULTURAL FINANCE

Custom Structured Agricultural Loans

- 100+ years of agricultural lending experience
- RLOC and fixed and adjustable rate mortgage financing
- Competitive interest rates

Rates are attractive - contact us today.
559.435.0206
metlife.com/ag

Not an advertisement of any investment advisory services, securities or investments. © 2021 MSS

564 Farms

FarmSeller FARMSELLER.COM Find the land, farms, and ranches you're looking for

DIRECTORY OF PREMIUM AGENCY MEMBERS

 Brook Havens Cascade Sotheby's International Realty 541-604-0788	 Patty Cordoni Cascade Sotheby's International Realty 541-771-0931	 Pam Mayo-Phillips Cascade Sotheby's International Realty 541-480-1513	 Linda Long Crater Lake Realty Chiloquin, OR 541-783-2759	 Jerry Franklin Eastern Oregon Realty John Day, OR 541-575-2121
 Tim Cobb Farmland Company Spokane, WA 509-624-4408	 Robert Bacon Fischer Nicholso Realty Klamath, OR 541-545-1510	 Stacey Moyles Century 21 Showcase Realtors, Inc. Klamath Falls, OR 541-882-2121	 Lisa Johnson Horsepower Real Estate Junction City, OR 541-510-4601	
 John Lee Lee Real Estate Aumsville, OR 503-245-9090	 Paul Terjeson Oregon Farm Brokers Corvallis, OR 503-999-6777	 Jason Nash Keller Williams Realty Southern Oregon 541-591-5195	 Steve Helms Keller Williams Farm & Ranch Albany, OR 541-979-0118	 Curtis Hitchcock Knipe Land Company Boise, ID 208-866-2825
 Janey Knipe Knipe Land Company Boise, ID 208-345-3163	 John Knipe Knipe Land Company Boise, ID 208-345-3163	 Tom Gill Knipe Land Company Mountain Home, ID 208-860-0776	 Julie Mansfield-Smith Mossy Oak Properties Copper Creek Land Co. Kimberly, OR 541-519-6891	 Jake Polvi POLVI Bend, OR 541-410-3050
 John Collins Ranch-N-Home Realty La Grande, OR 541-963-5450	 Judy Willis Real Estate Associates Joseph, OR 541-432-4060	 Ken Wick Real Estate Associates Joseph, OR 541-432-4060	 Mark Jones Robert Jones Realty Twin Falls, ID 208-733-0404	 Kirk Makin Ruby Peak Realty Joseph, OR 541-432-3131
 Claressa O'Connor Timberline Realty Joseph, OR 541-432-1234	 Jim Whitney Whitney Land Company Pendleton, OR 541-278-4444	 Todd Longgood Whitney Land Company Pendleton, OR 541-278-4444	 Robert Carnahan Artisan Real Estate Associates Dufur, OR 503-313-0419	

CALIFORNIA
HOLLISTER SAN BENITO REALTY 831-637-5563

IDAHO
BOISE KNIPE LAND 208-345-3163
POCATELLO INTERMOUNTAIN LAND EXCHANGE, INC. 208-232-8306
STAR FLINDERS REALTY & EXCHANGE 208-334-3840
TWIN FALLS ROBERT JONES REALTY INC. 208-733-0404

MONTANA
BILLINGS ROCKY MTN. RANCH REAL ESTATE 406-259-6666
MISSOULA STELLING RANCH & LAND 406-728-9200

NEVADA
FALLON BERNEY REALTY LTD. 775-426-8023

OREGON
ALBANY KELLER WILLIAMS FARM & RANCH 541-979-0118
AUMSVILLE LEE REAL ESTATE 503-245-9090
BAKER CITY AGRILANDS REAL ESTATE 541-853-1212
INTERMOUNTAIN REALTY 541-523-4434
BEND CASCADE SOTHEBY'S INTERNATIONAL REALTY (PAM MAYO AND BROOK HAVENS) 541-923-1376
CASCADE SOTHEBY'S INTERNATIONAL REALTY (PATTY CORDONI) 541-771-0931
COLDWELL BANKER BAIN 541-280-4372
FAY RANCHES 541-419-0770
POLVI 541-410-3050
BONANZA FISHER NICHOLSON REALTY, LLC 541-545-1510
BURNS JETT BLACKBURN REAL ESTATE 541-573-7206
CHILOQUIN CRATER LAKE REALTY 541-783-2759
CORVALLIS OREGON FARM BROKERS 503-999-6777
DAYVILLE DUKE WARNER REALTY 541-987-2363
DUFUR ARTISAN REAL ESTATE ASSOCIATES 503-313-0419
JOHN DAY EASTERN OREGON REALTY 541-575-2121
JOSEPH REAL ESTATE ASSOCIATES 541-432-4060
TIMBERLINE REALTY 541-432-1234
RUBY PEAK REALTY 541-432-3131
JUNCTION CITY HORSEPOWER REAL ESTATE 541-510-4601
KIMBERLY MOSSY OAK PROPERTIES CUPPER CREEK LAND CO. 541-519-6891
KLAMATH FALLS KELLER WILLIAMS REALTY SOUTHERN OR 541-591-5195
CENTURY 21 SHOWCASE REALTORS, INC. 541-882-2121
LA GRANDE RANCH-N-HOME REALTY 541-963-5450
LAKEVIEW HIGH COUNTRY REAL ESTATE 541-417-0250
MEDICAL SPRINGS AGRILANDS REAL ESTATE 541-853-1212
NORTH BEND CADWELL REALTY GROUP 541-740-9854
RE/MAX SOUTH COAST 541-290-1850
ONTARIO TOM PHILLIPS AGENCY 541-889-8401
PENDLETON WHITNEY LAND CO. 541-278-4444
SALEM AGRI-BUSINESS REAL ESTATE 503-371-6409
SILVERTON HARCOURTS NW OREGON REALTY GROUP 503-873-8600
WILSONVILLE WOLF PROPERTIES NW 503-682-1789

TEXAS
DIMMITT SCOTT LAND CO. 800-933-9698

WASHINGTON
BURLINGTON RE/MAX TERRITORY NW 360-755-9494
CHEHALIS CENTURY 21 LUND REALTORS 360-748-8619
SPOKANE FARMLAND COMPANY 509-624-4408
TOLEDO RE/MAX PREMIER GROUP 360-520-4810