

# Don't Miss Another Issue of Capital Press!

Stay up to date on the latest agricultural and natural resources news.

ANYTIME ANYWHERE

1 year \$55

2 years \$100

EZ Pay \$4 month

### 210 Trucks

2002 Freightliner FLD120: Detroit DDEC-4, 18 speed, 234" wheelbase, 90% rubber on drivers, setback front axle, 70" flat top sleeper. Good paint. \$25,000 OBO. Pictures Available. Lewiston, ID. 208-743-8274

Service Pickup: 1983 Chevy 3/4 ton crew cab, 4x4, compressor, welder, torch, tools, fuel tank, excellent condition, \$12,500. Photos on request. Prineville, OR. 541-410-4367



1979 International Cabover: Big Cam 350, 13 speed, wet kit. 660,000 original miles, \$8,500. Atwater, CA. 209-604-1342

1974 GMC Truck: 6000 Series, 5 and 2, V8, 18ft steel bed with hoist, \$4,500. Salem, OR. 503-990-1219



1965 GMC 6X6 FIRETRUCK. 302 GMC 6 cylinder gas. Automatic transmission. HI-LO transfer. 1500 Gallon tank. Hose reel with hose. Has draft. Good rubber. 25,000 Miles. All original military firetruck later acquired by an Oregon County. Firetruck runs drives and operates well and is work ready, \$9,500. Located in Twin Falls ID. Call 208-613-0050



**Missing Something? Capital Press has what you're looking for and more!**

**Capital Press**  
1-800-882-6789  
CapitalPress.com

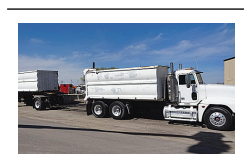
### 210 Trucks



1991 Ford 8000 Fire Engine. 3208 Turbo Cat Diesel. Allison AT. Hale Power Shift pump and apparatus. 1000 GPM @150 PSI. 1200 Gal. Tank. Water Cannon, draft hard hose and ladders and all emergency equipment. Former County truck that is clean as new and operates the same, \$9,900. Located in Twin Falls, ID. Call 208-613-0050



1996 Ford LN7000 with mechanic's bed, 6500 LB. All hydraulic Auto Crane, 160 CFM Sullair Rotary screw air compressor, PTO Drive and Honda 3500 Watt Gen-set. Cummins 5.9 Diesel. Allison Auto transmission. PS, AC. 80,000 ACTUAL MILES. One owner truck from a large Southern California County. In near new condition, \$15,900. Located in Twin Falls Idaho. Call 208-613-0050



2001 Freightliner Transfer Dump Truck. 15 yard main with HiLift airgates on truck and trailer. CAT C12 Diesel. 410HP. 13 speed. Jake Brake, CC, AC, PW. 80% 11/22.5 radials on alloy wheels. This one owner truck is spotlessly clean and has been well maintained. NO RUST, NO DAMAGE. Runs drives and operates like new, \$34,900. Located in Twin Falls ID. Call 208-613-0050



1988 Kenworth T800 with 21ft. roller deck dump bed. NTC Cummins Diesel. 13 speed. Jake, AC, PS. 236K MILES. 70% 11/22.5 radials. Very clean and well maintained original owner truck that is rust free and work ready, \$17,900. Located in Twin Falls ID. Call 208-613-0050

### 210 Trucks



2001 IHC 2574 tandem axle cab and chassis. N-14 Cummins, 13 speed. 112,000 ACTUAL MILES. Jake, PS, AC, PS. Traction lock. 164" cab to trunnion. Double frame full length. Hendrickson spring rears. 64,000 GVW. Near new 22.5 Radial tires. Former California DOT truck that has had excellent maintenance. Runs, drives and operates like new. NO RUST! \$29,000. Located in Twin Falls ID. Call 208-613-0050



1996 GMC TOPKICK. 16,000 ACTUAL MILES. CAT 3116 Diesel and Allison Automatic with 5500lb. folding crane. 15ft. reach and hydraulic lift gate. 22,000GVW. NO GD. Like new 245/70/19.5 radials. 12ft. STAKE BED. Former City Vehicle from Los Angeles area. Very clean, well maintained and WORK READY, \$13,900. Located in Twin Falls ID. Call 208-613-0050



2002 Peterbilt 357 Cab & Chassis, 400HP ISM Cummins, 10 speed, double frame, 59,000GVW, 172" cab to trunnion, 22' total, wet kit, \$49,500 Overtime Equipment LLC, 21338 Hwy 30, Filer ID, 83328; 208-734-3434



1997 INTERNATIONAL 4900 Cab & Chassis, mech DT466, 6 speed Allison, 21,000 miles, 2300 hours, 143" cab to trunnion, 18' total \$26,500 Overtime Equipment, LLC. 21338 Hwy 30 Filer, ID. 208-734-3434



2006 Freightliner M2 3 Axle Dump Truck, 385HP C11 CAT, 13 speed, 120k,000 Miles, 56KGVW, 16" bed with vibration. \$59,500 Overtime Equipment, LLC. 21338 Hwy 30, Filer ID. 83328, 208-734-3434



2009 Sterling Acterra with 10ft. dump bed, 3500 LB. Autocrane and arrowboard. 6.7 Cummins diesel, Allison AT. PS, AC, CC, PW. 23,000 GVW. 245/19.5 tires are like new. 50,495 ACTUAL MILES. One owner former large city vehicle that is in like new condition. Work ready, \$19,900. Located in Twin Falls ID. Call 208-613-0050

### 210 Trucks



2000 Sterling Cab & Chassis, 3126 CAT, 8LL, 57,000 miles, 3400 hours, 56,000GVW, 168" cab to trunnion, 23'8" total, \$22,500. Overtime Equipment, LLC. 21338 Hwy 30 Filer ID. 83328, 208-734-3434



1990 IHC 2674 tandem dump with 15 yard bed. Recent factory remanufactured Cummins 400 BC IV 400HP. Spicer 8LL transmission. PS, AC, Jake brake. 80% 11/22.5 first run radials. Low miles. Very clean and well maintained one owner former County truck. Runs and drives like new. WORK READY. \$24,900. Located in Twin Falls ID. Call 208-613-0050

### 210 Trucks



2002 Volvo Water/Dump Truck, 345HP VE D12, 8LL Transmission, 95,000 Miles, Swaploader hoist, 3,000 gallon water tank, 18' dump body, \$54,500. Overtime Equipment, LLC. 21338 Hwy 30, Filer ID. 83328, 208-734-3434



1995 International 4900: diesel DT466. All wheel drive, 6x6, pole auger lineman truck, 32,000lb. capacity, Altec D3060t, 3 stage, seal controls, crane, automatic transmission, 4 outriggers, rear hydraulic winch, 96519 miles \$25,000. Gaston, OR. 503-789-3726

### 210 Trucks



2007 Sterling 9500 with Grizzly 267C LOG LOADER. 2200 HOURS. 26,700lb. lift capacity. 360 non continuous rotation. 44" grapple with 25ft. reach. 12.8L Diesel. 430HP. 8LL Eaton transmission, 64,000 GVW. 90% 11/22.5 radials. Truck came from the State of Arizona Power Authority and has had fantastic taxpayer maintenance. Truck looks, operates and drives like a new one, \$49,000. Located in Twin Falls ID. Call 208-613-0050.

**THIS AD SPACE could be yours!**  
1-800-882-6789 or FAX 503-370-4383  
CapitalPress.com

## R & G MACHINING AND ENGINE PARTS

COMPLETE DIESEL MACHINE SHOP AND TRUCK REPAIR  
MULINO, OREGON • SHOP: 503-829-6038 • NATIONWIDE: 1-800-823-6038  
We Absolutely, Positively Have The Best Remanufactured Engines Available Anywhere!  
Huge Inventory • Expert Technical Assistance

REBUILT GAS L/B ENGINES	
<b>FORD</b>	<b>CHRYSLER &amp; JEEP</b>
300.....\$1,595	3.8-3.9.....\$1,899
4.6-5.4.....\$2,895	4.0-4.2.....\$1,895
302-351-400.....\$1,895	318-360.....\$1,899
415-V10.....\$3,295	488 V10.....\$3,395
460 '72-'92.....\$1,899	<b>TOYOTA</b>
<b>GM</b>	22RE.....\$1,395
4.3 V6 '85-'91.....\$1,595	All years & models.
350 '69-'88.....\$1,595	Turbos, Injectors, High
350 '89-'02.....\$1,899	Pressure Oil Pumps, Fuel
454 '75-'87.....\$1,899	Injection Pumps, Oil Coolers,
	Computers - Ford, GM, Dodge.

REBUILT DIESEL L/B ENGINES	
<b>CUMMINS</b>	<b>PERKINS &amp; ISUZU</b>
3.9-4BT.....\$4,150	Starting at.....\$5,995
5.9 '88-'02.....\$4,250	<b>MITSUBISHI &amp; NISSAN</b>
5.9 '03 & up.....\$4,650	Starting at.....\$5,995
6.7 C/R.....\$4,950	<b>YANMAR &amp; KUBOTA</b>
<b>FORD</b>	Starting at.....\$4,495
6.0 P/S.....\$5,345	<b>BOBCAT &amp; SHIBAURA</b>
6.4 P/S.....\$6,045	Starting at.....\$3,995
6.7 P/S.....\$7,150	<b>DOOSAN &amp; TAKEUCHI</b>
6.9-7.3 IDI.....\$4,650	Starting at.....\$5,995
7.3 P/S.....\$4,650	<b>MERCEDES</b>
<b>GM</b>	Starting at.....\$8,995
6.6 Duramax.....\$6,050	<b>HINO &amp; IVECO</b>
6.2-6.5.....\$4,395	Starting at.....\$5,995
<b>JOHN DEERE &amp; IH</b>	Starting at.....\$5,995
Starting at.....\$5,995	<b>KOBELCO, KOMATSU, HITACHI</b>
<b>CATERPILLAR &amp; HYUNDAI</b>	Starting at.....\$5,995

**CUMMINS 5.9 MAGNUM**

**IN BUSINESS SINCE 1975.**

**OVER 250 ENGINES & 450 CYLINDER HEADS IN STOCK!**  
We have a complete line of import diesels and obsolete diesels for your mini excavators or skidsteers. We work and repair all brands!

**NEED ENGINE PARTS, GAS OR DIESEL - CHECK IT OUT:**  
WWW.EBAY.COM/STR/GRUMPSPERFORMANCECENTER  
GRUMPSPERFORMANCE@GMAIL.COM

*We have a large inventory of rebuilt or remanufactured cylinder heads, connecting rods, crankshafts, and blocks on an exchange basis for diesel and gas engines.*  
Call on other gas or diesel engines. We are a major rebuilder on all diesel brands. All work done in house!

## KENWORTH T800 4-AXLE CHASSIS



Cummins ISX engines, 18-spd. trans., single spd. Eaton rear-ends 4:10 or 4:11 gears w/locker, **HENDRICKSON HAUL-MAX WALKING BEAM SUSP.**

#33 DR363687 2013, D46-170HP rears, 262" WB, 485hp.....\$80,000  
#39 CJ317333 2012, D46-170HP rears, 271" WB, 485hp.....\$80,000  
#42 CJ317336 2012, D46-170HP rears, 271" WB, 485hp.....\$80,000  
#48 DR363689 2013, D46-170HP rears, 262" WB, 485hp.....\$80,000  
#52 DR363690 2013, D46-170HP rears, 262" WB, 485hp.....\$80,000  
#78 CJ317337 2012, D46-170HP rears, 272" WB, 485hp.....\$80,000  
#19 CJ217332 2012, D46-170HP rears, 262" WB, 485hp.....SOLD  
#74 DR363688 2013, D46-170HP rears, 262" WB, 485hp.....SOLD  
#76 CJ317335 2012, D46-170HP rears, 262" WB, 485hp.....SOLD  
#94 R066820 2004, DSP-463P rears, 270" WB, 475hp.....SOLD

**CLEAN AND IN EXCELLENT SHAPE! MAINTENANCE RECORDS - REGULAR OIL SAMPLES**

**Thomas H. Ireland TRUCKING**  
More info: www.irelandtrucking.com  
Call Charles Ireland 541-863-1501  
Myrtle Creek, OR

## CLASS 8 TRUCKS 509-534-9088

 <b>2007 Freightliner 112</b> CAT C13, 410 hp, Jakes, auto shift, locker, A/C. <b>\$24,900</b>	 <b>(2) 2008 Columbia's</b> Detroit 14.0L, 10spd., A/C, California Clean! <b>\$24,900</b>
 <b>A-Trains available to rent</b> Daily, Weekly, Monthly Rates. Reserve yours today! <b>Call Scott</b>	 <b>2001 Volvo VNL</b> Day cab, Detroit 12.7, 430Hp, A/C, Jakes, auto shift trans., 3.90's, double lockers..... <b>\$24,900</b>
 <b>2006 Kenworth T800</b> CAT C15, 10 spd., 3.55's A/C, dual stacks, 663,740 miles, CLEAN!..... <b>\$37,000</b>	 <b>Ford F900 Grain Truck</b> 18' bed, 60" racks, tandem walking beam, diesel, 13 speed..... <b>\$19,900</b>

## LOVELL Truck Sales 50th Anniversary

 <b>2016 Freightliner 3-axle day cab, DD 13 470HP, Fuller 10-spd., 186" WB, PS, A/C, cruise, engine brake.....\$34,500</b> ALSO: 2015 Freightliner 3-axle day cab, same specs.....\$34,500	 <b>2006 Volvo VNL 64 3-axle day cab, Cummins 15X 400Hp, Fuller 10-spd., engine brake, PS, A/C, CC.....\$14,500</b>	 <b>2019 Isuzu NRR 18' box truck, Isuzu diesel, automatic transmission, 18x102 box, 177" wb, ps, ac, cruise control, power windows and locks, 101k miles, 19,500gvw.....\$39,500</b>
 <b>2001 Freightliner single axle tractor Allison MD-3060p automatic transmission, Cat 250 hp, 152" wb.....\$13,500</b>	 <b>2013 Freightliner CORONADO 4-axle, DD15 560Hp, Fuller 18-spd., 46K rear ends, full lockers, 13.3K front axle, PS, A/C, cruise, engine brake..... Call for Price</b>	 <b>2012 Freightliner 3-axle cab and chassis, Cummins TSC 8.3L/300hp, Allison auto., 40K lb. rears, 280" WB, PS, A/C, CC, exhaust brake, 161K miles.....\$39,500</b>
 <b>1996 Wabash 45' reefer trailer, Thermo King SB3 SR reefer, rail gate \$5,500. Also, 2001 Great Dane 48' reefer trailer, Carrier Phoenix reefer (non-working), nice rail gate \$5,500</b>	 <b>2013 Freightliner three axle day cab, DD13 435hp, Fuller 10spd, 178" wb, ps, ac, cruise control, power windows and locks, engine brake, air slide 5th wheel, dump valve, 352k miles.....\$32,500</b>	 <b>1995 Kenworth T-600. Series 60 Detroit 12.7L, 470 HP, 9 spd., 3.90 ratio, air ride, engine brake, PS, A/C, CC, 236" WB.....\$14,500</b>

**1-800-451-0012 (503) 266-5886 FAX (503) 266-6903 LOVELLTRUCKSALES.COM**  
LovellTruck@canby.com  
680 SW 1st Ave (Hwy 99 E) Canby, OR

**IDAHO'S SNOW MAN**

**NRCS water supply specialist keeps a close eye on mountain snowpack that provides river flow**

**IDAHO'S SNOW MAN**

**keep on Oregon Co**

**SUBSCRIBE TODAY!**

**Capital Press**  
EMPOWERING PRODUCERS OF FOOD & FIBER

**1-800-781-3214**  
CapitalPress.com