

**824 Seed**  
Pasture Seed \$1.20/ lb.  
Lawn Seed \$1.20/ lb.  
Wheat Straw \$120/ ton.  
Grass Hay \$180/ ton.  
Wheat \$6/ bag. Rickreall,  
OR. 503-623-6922



WANTED: Rely beardless Club Wheat Seed. Also looking for Cara Club Wheat Seed. 509-250-2099

Summer COVER CROPS  
Piper Sudan, Cowpeas,  
Buckwheat. Albany, OR.  
Text/ Call: 541-905-2111

**Quality VNS Alfalfa Seed:** \$2.00/lb. Touchet, WA. Chris Kregger 509-394-2400

**825 Fertilizer & Soil Amendments**



•Bulk Chicken Manure  
•Bulk Chicken Litter  
•Delivery Services  
For pricing and freight quotes call 541-926-1829 or e-mail: paulh@potentgrow.com

**Spreading Now**  
Gypsum, High Calcium lime, and more. Custom spreading services available for dry products. Organic Soil Amenders, Inc. 509-935-7154 www.soilamenders.com Chewelah, WA.

**826 Organic**

900 Bales of Organic Haylage: good quality, \$55/ bale. Scio, OR. 503-932-1005

**828 Misc for Sale**

Globe Model 3600 Commercial Meat Slicer: 110V, excellent condition, \$1295. Washtucna, WA. 509-431-8061

**863 Refrigeration Equipment**



30 ton compressor with two chillers, \$3500. Wapato, WA. 509-952-8187

**869 Livestock Equip. & Supplies**

WANTED: Portable sheep or goat scales, sheep trailer and sheep panels. 541-259-1435, 541-405-8474

Capital Press Ag Weekly **It works!**



"I sold the compressor 30 minutes after placing the ad on the internet with Capital Press. It was really something. I couldn't believe it! The other ads I placed had the phone ringing before I even got out the door!"  
Don Wachlin  
Sherwood, OR

"Your ad worked wonders! Our wagon sold yesterday to a man who read the ad in Capital Press."  
Phil Hixson  
Blanchard, ID

"Just a line to let you know I have enjoyed reading Capital Press for the past 50 years. I read a lot of useful info, like finding the right piece of property to move out of the city to a country home."  
Emil Rexin  
Willamina, OR

**Call to place your ad!**

**AD DEADLINES:**  
Classified Display Ads  
Wednesday at 10AM  
Classified Line Ads  
Wednesday at Noon

**Capital Press**  
EMPOWERING PRODUCERS OF FOOD & FIBER  
Place your ad today!  
800-882-6789  
CapitalPress.com

**869 Livestock Equip. & Supplies**  
**Feed Mixer**  
Diamond Ind. 670-T vertical, twin screw feed mixer. New spare tire included. Chiloquin, OR. 509-961-9693



New IA Portable Hay Feeder:  
•8 hole wheels  
•Swing up tongue  
•Inner bunk  
•35 stations  
\$6,395  
2 or more \$6,195 each.  
Bend, OR. 541-548-7185  
mtcsales.net

WANTED: adjustable cattle alley. Approximately 20'. 541-659-9161

**Livestock Panels:** 16' (6) rail, (3) brace, \$153 each. 12' panels, (6) rail, (2) brace, \$116. Bow gates, all lengths and sizes. These panels are new Green color, hundreds available. Heavy 16' Feeder Panels, \$360 each. La Grande, OR. 541-805-9279, 541-963-6258

**Bale Barn Horse Feeders In Stock:** NW Farm Supply, Hermiston, OR. 800-801-5650 or Mike 541-561-6047

**872 Dairy Eq. & Supplies**

Polydome Calf Nursery: Hutches available for various climates. Western Polydome, Inc. Monroe, WA. 800-822-5837



**Cows are Sold!**  
All milking equipment for sale. DeLaval vacuum pump, variable speed. 6000 gallon Dari-Kool Milk Tank. (2) 5HP compressors, (2) condensers, Enumclaw, WA. 253-740-2072

**Kiln Dried Shavings:** Smaller truck loads now available. Hogfuel also available. Call for details. Forest Grove, OR. 503-849-0216

"Both Tractors SOLD! Thanks!"  
Jim Petterson • Gig Harbor, Wash.  
Sell yours too in Capital Press!

**NEW MANURE SPREADER**

400 bu. • BUY OR RENT  
Call Scott at Barr-Tech  
Compost/Organics Recycling  
Authorized Dealer of P&R RITE Spreaders  
509-590-0437  
www.Barr-Tech.net  
Sprague, WA 5224329-1

**875 Tanks & Storage**

**FUEL TANKS:**  
Used single wall tanks 1500 & 2000 gallons. New 1000, 2000, 3000 and 4000, etc. gallon double walled tanks. Salem, OR. Peter 503-881-9803

WANTED: 8,000 - 13,000 gallon stainless steel tank. 208-899-2914

**878 Generators**



**GENERATORS:** Used, low hour takeouts, 20kW to 2000kW, diesel, propane, & natural gas. Cooperstown, ND. We ship nationwide. 701-371-9526 or 701-367-4305  
abrahamindustrial.com



250 KW Genset. CAT Diesel. Very low hours. Like new condition. 120-480 Volt. 1 and 3 phase. Skid mount. Ready to install and put to work, \$13,900. Located in Twin Falls ID. 208-613-0050



550KW Mobile Genset. Two 275KW generators operated single or in tandem. Switch gears. All modern digital controls. Silenced exhaust. 1000 gallon fuel. 40ft. Utility van enclosure. 50 hours and 54 hours on the generators. 8 near new 11/22.5 radials. Former Municipal in new condition throughout, \$49,900. Located in Twin Falls ID. Call 208-613-0050

**881 Shop Equip. & Tools**

For Sale by Owner. Many years of collecting tools & equipment. Welding machines, pipe machines, & wrenches. Way too many to list. Several vehicles and equipment too. This is not a Garage Sale. Most all located in Pendleton, OR. For more information call 541-379-0851

**881 Shop Equip. & Tools**  
Late Model Kobelco Wheel Loader with Tink bucket LK600A, \$35,000. Puyallup, WA. 253-677-7007

**887 Irrigation Equip.**  
Wade Rain 4"x30" main line: knob and loop, couplers and valves, \$45/ per joint. 20HP submersible pump and motor. Like new, less than 4 hours of use. Includes approximately 400 ft of column, meter base and weather head. Goldendale, WA. 509-773-3925

40 hp, 3 phase, hydraulic variable speed peerless irrigation pump, \$850. Hillsboro, OR. 503-349-2425



**NEW IA Pivot Track Closer.** Heavy Duty with adjustable cone discs. From 60" to 12" closing width. Hydraulic Depth Control water fill roller packer, \$5,495. Bend, OR. 541-548-7185  
mtcsales.net

For Sale: 3/4 hp 10 gallon per minute. Single phase 230v Franklin pump. 100' deep, set schedule 120 pipe, 100' #12 sub flat cable. Went up in hp, in well 13 months, \$1,000. Woodburn, OR. 503-339-5532

**(27) Used Pivots: New listings coming.** Engines, pumps. Garden Valley, ID. Call Mike at 208-420-1480, or see www.pivotsplus.com

2 Nelson Big Guns 100 and 150. Never used. Still in boxes. Movable stand on wheels, \$500 for 100; \$1,000 for 150. Sprague, WA. 509-434-9492



2006 Wacker PT6 mobile pump. 6in. 3 cylinder. Air cooled diesel. 126 ACTUAL HOURS. Former City machine that is in new condition. \$11,900. Located in Twin Falls ID. Call 208-613-0050

**1-800-882-6789**  
CapitalPress.com

**TJEQUIPMENT LLC**  
Ferndale, WA  
(360) 815-1597



**New Cadman 4000 SWB irrigation reel,** 4"x1250" hose, 443-600 GPM, Honda motor ..... \$42,000



**Custom built irrigation pump,** Deutz F4L912 motor, Caprari HEC-MG/3A 3 stage pump, 1800 hours ..... \$12,000  
Find lots more equipment at:  
www.TJEquipment LLC.com 5252732-1

**WaterTec**  
High Quality Brass VYRSA Impact Sprinklers



1/2" Part Circle \$15.60  
1/2" Full Circle \$11.70  
3/4" Part Circle \$25.74  
3/4" Full Circle \$14.88

Call Us Today for Bulk Pricing!  
360.393.4923  
Lynden, WA  
watertecna.com 5227791-1

**907 Nursery Equip. & Supplies**

**887 Irrigation Equip.**  
WHEEL LINES FOR SALE 5' wheels x 1,800'. Levellers, sprinklers, travelers, working motors, \$6,000 each. Fields, OR. 503-799-2677

**H<sub>2</sub>S Pipe & Supply**  
Specializing in • Drip Irrigation • Filtration • Design  
598 Baseline, Cornelius, OR  
(503) 357-4217  
www.hpspipe.com  
CCB#120254 5222302-1

**890 Packing/ Processing Eq.**

**VEGETABLE PACKING LINE**  
32" wide, washer brushes, roller grader table, 4 sizes, VFD electrical, even flow tub. Excellent condition, \$13,500 FOB or OBO. Madera, CA. 559-352-1700

Used Super Sacks. Used once. Stovepipe Top: \$2. Opened Top: \$3. Salem, OR. 503-932-8598

**893 Logging Equip.**



Log/ Loader grapples, fits CAT 966 or 977, \$2500 OBO Mount Vernon, OR. 503-704-2195



Paramount Ironworks has new brush rakes. We can help your land clearing/ clean up operations. The 8ft rake pictured will fit a variety of dozers and has 1"AR400 rippers, \$1995 and up. If you need something different, we offer custom fab & mobile welding. Let us know how we can help you. Eugene, OR. 541-321-3654

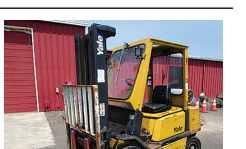
**894 Sawmill Equip.**

WANTED: Mobile Dimension, Mighty Might or Timber Champ Circular Sawmills. Any age/ condition. Dead or Alive. Have Cash. Klamath Falls OR. 530-905-2250

**896 Forklifts**



2016 Hyster H50CT READY SOON, waiting for engine rebuild. 5000 lb., 3 stage mast, side shift, 6,158 hours, \$12,950. McMinnville, OR. Call/ Text 503-550-7625  
www.SpringHollowEquip.com



2001 YALE GLP50 5000 lb lift capacity with Cab and doors. FOR SALE REFURBISHED (complete out of truck engine rebuild), brakes, fuel system. Three stage mast, full free lift, side shift, \$7950. McMinnville, OR. Call/ Text 503-550-7625  
www.SpringHollowEquip.com



2006 Hyster H50FT, 5000 lb lift capacity. FOR SALE REFURBISHED. Rebuilt engine, brakes, fuel system. Three stage mast, complete and ready for work, \$9950. McMinnville, OR. Call/ Text 503-550-7625  
www.SpringHollowEquip.com

**907 Nursery Equip. & Supplies**

**899 Heavy & Indust. Eq.**  
2006 Hitachi ZX200LC, Auxiliary hydraulics, thumb, hydraulic quick connect, A/C, Isuzu, 7,500 hours, Asking \$54,950. Sandy, OR. Call Pepe: 503-544-3232; Call Pat: 503-407-9062



1979 Caterpillar 955C front end loader, extensive service records, newer tires, Groneveld auto grease system. Well taken care of with records to show, \$25,000. Redmond, WA. 425-883-0821



CAT D4E Logger. Winch needs work, \$12,000. Beavercreek, OR. 503-632-3333



John Deere 120C, Hydraulic quick connect, thumb, dig and clean up Buckets, Asking \$44,950. Sandy, OR. Call Pepe: 503-544-3232; Call Pat: 503-407-9062

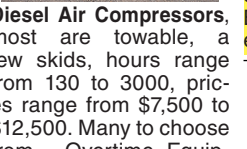


2012 T-190 Bobcat Compact Track Loader: 584 hours, heat, A/C, foot controls, 2 buckets. Great shape, \$60,000. Junction City, OR. 503-877-8200

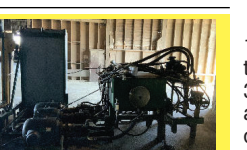


2014 Genie Manlift Z-45/25J IC: 4WD, 157 hours, Deutz diesel. Excellent condition, \$70,000. Junction City, OR. 503-877-8200

**REPLACEMENT DECAL SETS**  
Construction, Forestry & Ag Equipment. Fast, Knowledgeable, Reliable Service. 215-536-5339  
email: info@CustomServicesCompany.com  
Thousands of sets, Old & New, in our digital inventory.  
www.QuipCal.com



**Diesel Air Compressors,** most are towable, a few skids, hours range from 130 to 3000, prices range from \$7,500 to \$12,500. Many to choose from. Overtime Equipment, LLC. 21338 Hwy 30, Filer ID. 83328. 208-734-3434



Hydraulic Power Unit 3 phase electric motor. Driven pumps with manifold and valves. Self contained on skid with power panel, additional new pumps and motors and valves to go with. Salem, OR. 503-910-4010; Westernag@msn.com



**A picture is worth a 1,000 words**  
Add a full color photo to your print and online ad.  
**Capital Press**  
800-882-6789  
CapitalPress.com

**Buying or Selling**  
Capital Press is here to help you!  
1-800-882-6789  
or FAX 503-370-4383  
CapitalPress.com

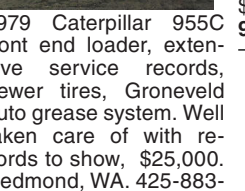
**QUALITY USED EQUIPMENT & ATTACHMENTS**

1982 Royal 80 Grader - \$25,000  
FEATURES:  
• 2,210 Hours  
• Rear Scarifier  
• Cat Diesel  
SPECIFICATIONS:  
• Operating Weight: 16,000#  
• HP: 120

1992 Rayco RG1665 Stump Grinder  
FEATURES:  
• 778 Hours  
• Deutz Diesel  
• 20 Carbide Tipped Teeth  
SPECIFICATIONS:  
• Operating Weight: 4,300#  
• HP: 72

**American Tractor**  
Call Cameron Noble or Eric Hunt  
CENTRAL POINT, OR  
855-423-1200  
www.amtractor.com 5220937-1

**899 Heavy & Indust. Eq.**  
1979 Caterpillar 955C front end loader, extensive service records, newer tires, Groneveld auto grease system. Well taken care of with records to show, \$25,000. Redmond, WA. 425-883-0821



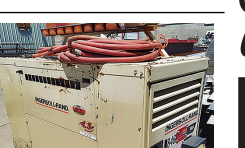
John Deere 590D Excavator: Auxiliary Hydraulics, Hydraulic Thumb, Hydraulic Coupler, Dig Bucket, asking \$31,950. Sandy, OR. Call Pepe: 503-544-3232; Call Pat: 503-407-9062



1976 Caterpillar 966 C front end loader around 25k hours on the machine has newer tires on it as well extensive service records asking \$25,000. Redmond, WA. 425-883-0821

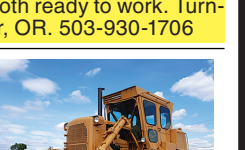


Komatsu PC35R with mechanical thumb, good condition cab interior. Starts, runs well. 7288 hours, 22 inch bucket, \$21,000. Cash Only. Beaverton, OR. 503-522-6512



2000 Ingersol Rand 185 CFM air compressor with 4 KW generator. Skid mount. John Deere Diesel 50 Ft. of hose. Very clean well operating machine from a large California County, \$7900. Located in Twin Falls ID. Call 208-613-0050

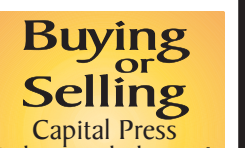
2-1/2 yard 4WD Scoop mobile loader with Cummins engine, \$3900. HD6 CAT with 371 engine, drum and blade, canopy, \$4900 OBO. Both ready to work. Turner, OR. 503-930-1706



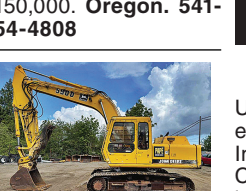
1980 CAT D7G: Power tilt blade, 10ft. Hydraulic, 3 valve at draw bar. AC and heat in cab. Direct drive. Grate shape. Will deliver, \$39,000. Gaston, OR. 503-789-3726



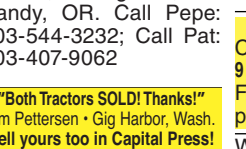
Dynapac CA25D Vibratory Roller, 84" Smooth Drum, ROPS Canopy, CAT 3208 Diesel, 4260 hours. Asking \$22,500. Sandy, OR. Call Pepe: 503-544-3232; Call Pat: 503-407-9062



**899 Heavy & Indust. Eq.**  
**Jaw Crusher Plant 32"x42"**. With a separate 32"x42" apron feeder. Both are portable with heavy duty hydraulic legs. Good tires, \$150,000. Oregon. 541-954-4808



John Deere 590D Excavator: Auxiliary Hydraulics, Hydraulic Thumb, Hydraulic Coupler, Dig Bucket, asking \$31,950. Sandy, OR. Call Pepe: 503-544-3232; Call Pat: 503-407-9062



"Both Tractors SOLD! Thanks!"  
Jim Petterson • Gig Harbor, Wash.  
Sell yours too in Capital Press!

**CASE INDUSTRIAL PARTS**  
We sell genuine, after market, and used CASE parts at discount prices nationwide.  
Call For Free Catalog.

**CENTRAL EQUIPMENT**  
AFTER MARKET & USED PARTS  
Medford, OR  
(888) 593-8749 5238102-1

**USED NURSERY CONTAINERS:**  
Used, but reusable nursery containers. All sizes. Inventory changes daily. Call for current availability and prices. Sawyer Farms, Scio OR. 503-769-3417, juddsfarm@wvi.com (also wanted: used containers)

**FRESH SAWDUST:**  
Consistently fair pricing. 9 Unit Loads Now Available Forest-Grove, OR. For pricing call 503-849-0216

WANTED: 10K HD #2 & 10K #3 HD Nursery Pots clean. Salem, OR. Call Mark 503-932-3920

"I get great results with Capital Press...and I have for over 20 years."  
Mark, Pro Truck  
Call 1-800-882-6789 to advertise.

**902 Farm Equip. Parts**

**902 Farm Equip. Parts**

**NEW & USED OLIVER & CLETRAC**  
Wheel & Crawler Parts Are Our Specialty  
**ZIMMERMAN OLIVER-CLETRAC**  
1450 Diamond Station Rd. • Ephrata, PA 17522  
**717-738-2573**  
Fax 717-733-3529  
www.olivercletrac.com 5224840-

**BIG TRACTOR PARTS, INC.**  
~ GEARED FOR THE FUTURE ~

**STEIGER TRACTOR SPECIALIST**

- 1. We are your source for new & used Steiger drivetrain parts Series 1-9300 Series.
- 2. We rebuild Spicer manual transmissions, Fugi power shift transmissions, dropboxes & axle with ONE YEAR WARRANTY!
- 3. We now rebuild computer control boxes for Steiger tractors 1982-1999.

**800-982-1769**  
www.bigtractorparts.com 5218277-1

**COMBINE HEAVEN R.I.P.**  
Reasonable Implement Pricing  
See Our Combine Dance on YouTube!  
**COMBINES**  
**RECENT ARRIVALS**  
JD 8820 II • JD 9610  
JD 9600 HILLSIDES  
(3) IH 2188 • IH 1688 4X4

JD	NH
CTS	TR 96
9770 STS	TR 95
9660 STS	TR 85
9610	TR 75
9600	TR 70
9500	IH
9400	2188
8820	1688
8820 II	1680
7720	1666
7700	1666
6622	1660
6620	1640
6602	1480
6600	1460
6600SH	1440
4400	915
105	915
95E	815
95 Late	715
9	