

210 Trucks



1991 Spartan mobile work site office and HQ. 36 ft. long. 5.9 Cummins Diesel. Allison automatic. 20KW Onan Kubota Diesel genset. 3 AC/heater roof top units. Desks, cabinets, phone. 3 awnings. 6 near new 11/22.5 radial tires. Underneath storage. Very low miles. Former California Fire Command center. Like new condition. Runs drives and operates like new, \$12,900. Located in Twin Falls ID. Call 208-613-0050



2007 Freightliner Columbia. 450 hp engine, 13 speed smart shift transmission. 49,000 original miles. Pre-emission, Extremely clean. \$52,000. Call Tim 503-719-2545

2002 Freightliner FLD120: Detroit DDEC-4, 18 speed, 234" wheelbase, 90% rubber on drivers, setback front axle, 70" flat top sleeper. Good paint. \$25,000 OBO. Pictures Available. Lewiston, ID. 208-743-8274

Service Pickup: 1983 Chevy 3/4 ton crew cab, 4x4, compressor, welder, torch, tools, fuel tank, excellent condition, \$12,500. Photos on request. Prineville, OR. 541-410-4367



1979 International Cabover: Big Cam 350, 13 speed, wet kit. 660,000 original miles, \$8,500. Atwater, CA. 209-604-1342

1974 GMC Truck: 6000 Series, 5 and 2, V8, 18ft steel bed with hoist, \$4,500. Salem, OR. 503-990-1219



1965 GMC 6X6 FIRETRUCK. 302 GMC 6 cylinder gas. Automatic transmission. HI-LO transfer. 1500 Gallon tank. Hose reel with hose. Has draft. Good rubber. 25,000 Miles. All original military firetruck later acquired by an Oregon County. Firetruck runs drives and operates well and is work ready, \$9,500. Located in Twin Falls ID. Call 208-613-0050



1991 Ford 8000 Fire engine. 3208 Turbo Cat Diesel. Allison AT. Hale Power Shift pump and apparatus. 1000 GPM @150 PSI. 1200 Gal. Tank. Water Cannon, draft hard hose and ladders and all emergency equipment. Former County truck that is clean as new and operates the same, \$9,900. Located in Twin Falls, ID. Call 208-613-0050



1996 Ford LN7000 with mechanic's bed, 6500 LB. All hydraulic Auto Crane, 160 CFM Sullair Rotary screw air compressor, PTO Drive and Honda 3500 Watt Genset. Cummins 5.9 Diesel. Allison Auto transmission. PS, AC. 80,000 ACTUAL MILES. One owner truck from a large Southern California County. In near new condition, \$15,900. Located in Twin Falls Idaho. Call 208-613-0050



2001 Freightliner Transfer Dump Truck. 15 yard main with HiLift airgates on truck and trailer. CAT C12 Diesel. 410HP. 13 speed. Jake Brake, CC, AC, PW. 80% 11/22.5 radials on alloy wheels. This one owner truck is spotlessly clean and has been well maintained. NO RUST, NO DAMAGE. Runs drives and operates like new, \$34,900. Located in Twin Falls ID. Call 208-613-0050

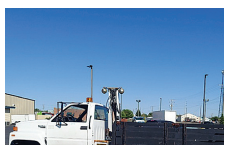
210 Trucks



1988 Kenworth T800 with 21ft. roller deck dump bed. NTC Cummins Diesel. 13 speed. Jake, AC, PS. 236K MILES. 70% 11/22.5 radials. Very clean and well maintained original owner truck that is rust free and work ready, \$17,900. Located in Twin Falls ID. Call 208-613-0050



2001 IHC 2574 tandem axle cab and chassis. N-14 Cummins, 13 speed. 112,000 ACTUAL MILES. Jake, PS, AC, PS. Traction lock. 164" cab to trunnion. Double frame full length. Hendrickson spring rears. 64,000 GVW. Near new 22.5 Radial tires. Former California DOT truck that has had excellent maintenance. Runs, drives and operates like new. NO RUST! \$29,000. Located in Twin Falls ID. Call 208-613-0050



1996 GMC TOPKICK. 16,000 ACTUAL MILES. CAT 3116 Diesel and Allison Automatic with 5500lb. folding crane. 15ft. reach and hydraulic lift gate. 22,000GVW. NO CDL. Like new 245/70/19.5 radials. 12ft. STAKE BED. Former City Vehicle from Los Angeles area. Very clean, well maintained and WORK READY, \$13,900. Located in Twin Falls ID. Call 208-613-0050



2002 Peterbilt 357 Cab & Chassis, 400HP ISM Cummins, 10 speed, double frame, 59,000GVW, 172" cab to trunnion, 22' total, wet kit, \$49,500 Overtime Equipment LLC, 21338 Hwy 30, Filer ID, 83328; 208-734-3434



1997 INTERNATIONAL 4900 Cab & Chassis, mech DT466, 6 speed Allison, 21,000 miles, 2300 hours, 143" cab to trunnion, 18" total \$26,500 Overtime Equipment, LLC. 21338 Hwy 30 Filer, ID. 208-734-3434



2006 Freightliner M2 3 Axle Dump Truck, 385HP C11 CAT, 13 speed, 120K,000 Miles, 56KGVW, 16' bed with vibration. \$59,500 Overtime Equipment, LLC. 21338 Hwy 30, Filer ID. 83328, 208-734-3434

1-800-882-6789 CapitalPress.com

210 Trucks



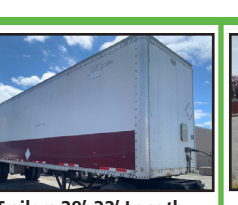
2000 Sterling Cab & Chassis, 3126 CAT, 8LL, 57,000 miles, 3400 hours, 56,000GVW, 168" cab to trunnion, 23'8" total, \$22,500. Overtime Equipment, LLC. 21338 Hwy 30 Filer ID. 83328, 208-734-3434



2002 Volvo Water/Dump Truck, 345HP VE D12, 8LL Transmission, 95,000 Miles, Swaploader hoist, 3,000 gallon water tank, 18' dump body, \$54,500. Overtime Equipment, LLC. 21338 Hwy 30, Filer ID. 83328. 208-734-3434

"I get great results with Capital Press...and I have for over 20 years." Mark, Pro Truck Call 1-800-882-6789 to advertise.

210 Trucks



Trailers 28'-32' Length, Wood Decks, Rollup Doors, One with Railgate Lift. Starting.....\$1,750 - \$4,750

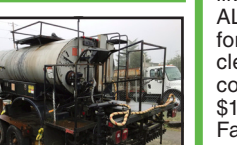


2005 GMC W4500, Non CDL Pre-Emission Isuzu Diesel, 151K Miles, Automatic, 12' L x 96" W Flatbed, Trailer Brake, & Hitch Assembly....\$16,500

210 Trucks



1997 International 8100 S/A Day Cab, 33 GVW, Cummins M-11, 359K Miles, 10 Spd., 4:11 Ratio, Air Ride, DOT'd. Good Runner.....\$11,900



1991 Entyre Oil Spreader, 1500 Gal., 12' Spreader, Diesel Burner. On non-roadable trailer.....\$1000 or Make An Offer

Emerald Truck Sales
ALL ABOUT GOOD USED TRUCKS
253.304.2212 • emeraldtrucksales.com
TACOMA, WA 5242830-1

R & G MACHING AND ENGINE PARTS
COMPLETE DIESEL MACHINE SHOP AND TRUCK REPAIR
MULINO, OREGON • SHOP: 503-829-6038 • NATIONWIDE: 1-800-823-6038
We Absolutely, Positively Have The Best Remanufactured Engines Available Anywhere!
Huge Inventory • Expert Technical Assistance

REBUILT GAS L/B ENGINES

FORD	CHRYSLER & JEEP
300.....\$1,595	3.8-3.9.....\$1,899
4.6-5.4.....\$2,895	4.0-4.2.....\$1,895
302-351-400.....\$1,895	318-360.....\$1,899
415-V10.....\$3,295	488 V10.....\$3,395
460 '72-'92.....\$1,899	22RE.....\$1,395

GM
All years & models.
4.3 V6 '85-'91...\$1,595
350 '69-'88...\$1,595
350 '89-'02...\$1,899
454 '75-'87...\$1,899

REBUILT DIESEL L/B ENGINES

CUMMINS	PERKINS & ISUZU
3.9-4BT.....\$4,150	Starting at.....\$5,995
5.9 '88-'02.....\$4,250	MITSUBISHI & NISSAN
5.9 '03 & up.....\$4,650	Starting at.....\$5,995
6.7 C/R.....\$4,950	YANMAR & KUBOTA
FORD	Starting at.....\$4,495
6.0 P/S.....\$5,345	BOBCAT & SHIBAURA
6.4 P/S.....\$6,045	Starting at.....\$3,995
6.7 P/S.....\$7,150	DOOSAN & TAKEUCHI
6.9-7.3 IDI.....\$4,650	Starting at.....\$5,995
7.3 P/S.....\$4,650	MERCEDES
GM	Starting at.....\$8,995
6.6 Duramax.....\$6,050	HINO & IVECO
6.2-6.5.....\$4,395	Starting at.....\$5,995
JOHN DEERE & IH	CATERPILLAR & HYUNDAI
Starting at.....\$5,995	Starting at.....\$5,995



IN BUSINESS SINCE 1975.
OVER 250 ENGINES & 450 CYLINDER HEADS IN STOCK!
We have a complete line of import diesels and obsolete diesels for your mini excavators or skidsteers. We work and repair all brands!

NEED ENGINE PARTS, GAS OR DIESEL - CHECK IT OUT:
WWW.EBAY.COM/STR/GRUMPYSPERFORMANCECENTER
GRUMPYSPERFORMANCE@GMAIL.COM

POWER FLEET & COMMERCIAL SALES
MEDIUM DUTY DEALER

2019 Ford Super Duty F-450 DRW XL
Stock #P28953
Call Today for your Business Preferred Pricing!

Jim Church 503-910-7784
Delana Johnson 503-769-7100
Brian Heinrich 503-504-3629
Ryan Church 503-877-7102



CHEVROLET BUSINESS ELITE
POWER FLEET - COMMERCIAL
WWW.POWERAUTOGROUP.COM
503-769-7100

LOVELL Truck Sales 50th Anniversary



2016 Freightliner 3-axle day cab, DD 13 470HP, Fuller 10-spd., 186" WB, PS, A/C, cruise, engine brake.....\$34,500
ALSO: 2015 Freightliner 3-axle day cab, same specs.....\$34,500



2006 Volvo VNL 64 3-axle day cab, Cummins 15X 400HP, Fuller 10-spd., engine brake, PS, A/C, CC.....\$14,500



2019 Isuzu NRR 18' box truck, Isuzu diesel, automatic transmission, 18x102 box, 177"wb, ps, ac, cruise control, power windows and locks, 101k miles, 19,500gvw.....\$39,500



2001 Freightliner single axle tractor Allison MD-3060p automatic transmission, Cat 250 hp, 152" wb.....\$13,500



2013 Freightliner three axle day cab, Cummins ISX 450hp, Fuller 10 spd, air ride suspension, 166" wb, ps, ac, cruise control, air slide 5th wheel, dump valve, power windows and locks, engine brake, 267k miles.....\$38,500



2012 Freightliner 3-axle cab and chassis. Cummins ISC 8.3L/300hp, Allison auto., 40K lb. rears, 280" WB, PS, A/C, CC, exhaust brake, 161K miles.....\$39,500



1996 Wabash 45' reefer trailer, Thermo King SB3 SR reefer, rail gate \$5,500 Also, 2001 Great Dane 48' reefer trailer. Carrier Phoenix reefer (non-working), nice rail gate \$5,500



2013 Freightliner three axle day cab, DD13 435hp, Fuller 10spd, 178" wb, ps, ac, cruise control, power windows and locks, engine brake, air slide 5th wheel, dump valve, 352k miles.....\$32,500



1995 Kenworth T-600. Series 60 Detroit 12.7L, 470 HP, 9 spd., 3.90 ratio, air ride, engine brake, PS, A/C, CC, 236" WB.....\$14,500

COMING THIS WEEK:
2013 Freightliner CORONADO 4-axle, DD15 560Hp, Fuller 18-spd., 46K rear ends, full lockers, 13.3K front axle, PS, A/C, cruise, engine brake...Call for Details

1-800-451-0012
(503) 266-5886
FAX (503) 266-6903
LOVELLTRUCKSALES.COM
LovellTruck@canby.com
680 SW 1st Ave (Hwy 99 E)
Canby, OR

210 Trucks



2009 Sterling Acterra with 10ft. dump bed, 3500 LB. Autocrane and arboard. 6.7 Cummins diesel, Allison AT. PS, AC, CC, PW. 23,000 GVW. 245/19.5 tires are like new. 50,495 ACTUAL MILES. One owner former large City vehicle that is in like new condition. Work ready, \$19,900. Located in Twin Falls ID. Call 208-613-0050



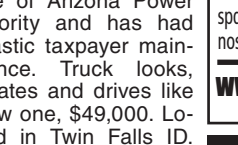
1996 IHC 4900 15ft. flatbed truck with removable 4 ft. stake sides and 3000 Lb. liftgate. T444E, 7.3 L. Turgo Diesel with 5 and 2 trans. 103,000 ACTUAL MILES. Brand new radial tires. 26,000 GVW. NO CDL. One owner truck from Cal Fire. Clean, well maintained and operates like new. \$14,900. Located in Twin Falls ID. Call 208-613-0050



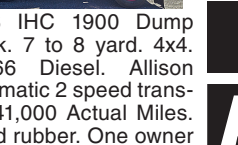
1990 IHC 2674 tandem axle dump with 15 yard bed. Recent factory remanufactured Cummins 400 BC IV 400HP. Spicer 8LL transmission. PS, AC, Jake brake. 80% 11/22.5 first run radials. Low miles. Very clean and well maintained one owner former County truck. Runs and drives like new. WORK READY. \$24,900. Located in Twin Falls ID. Call 208-613-0050



1995 International 4900: diesel DT466. All wheel drive, 6x6, pole auger lineman truck, 32,000lb. capacity, Altec D3060t, 3 stage, seat controls, crane, automatic transmission, 4 outriggers, rear hydraulic winch, 96519 miles \$25,000. Gaston, OR. 503-789-3726



2007 Sterling 9500 with Grizzly 267C LOG LOADER. 2200 HOURS. 26,700Lb. lift capacity. 360 non continuous rotation. 44" grapple with 25ft. reach. 12.8L Diesel. 430HP. 8LL Eaton transmission, 64,000 GVW. 90% 11/22.5 radials. Truck came from the State of Arizona Power Authority and has had fantastic taxpayer maintenance. Truck looks, operates and drives like a new one, \$49,000. Located in Twin Falls ID. Call 208-613-0050.



1988 IHC 1900 Dump Truck. 7 to 8 yard. 4x4. DT466 Diesel. Allison Automatic 2 speed transfer. 41,000 Actual Miles. Good rubber. One owner former Municipal truck. Runs and works like new, \$14,900. Located in Twin Falls ID. Call 208-613-0050

To Sell a Little, To Sell a Lot... Classified Line Ads 1-800-882-6789 CapitalPress.com

222 Truck/ Auto Parts & Accessories

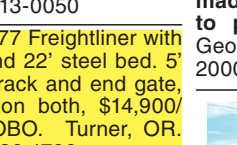
210 Trucks



1996 IHC 4900 15ft. flatbed truck with removable 4 ft. stake sides and 3000 Lb. liftgate. T444E, 7.3 L. Turgo Diesel with 5 and 2 trans. 103,000 ACTUAL MILES. Brand new radial tires. 26,000 GVW. NO CDL. One owner truck from Cal Fire. Clean, well maintained and operates like new. \$14,900. Located in Twin Falls ID. Call 208-613-0050



2000 IHC 2674 tandem axle dump truck. 15 yard bed. Cummins N-14 Diesel. Allison 6 speed automatic transmission. PS, AC, CC, PW, Jake Brake. Hendrickson suspension. 18,000 lb. front axle. Side lock rears. Electric load tarp. 94,000 ACTUAL MILES. 4859 HOURS. 80% 22.5 radials. Former State DOT truck that has been well maintained, is very clean, runs and drives like new and comes with service records since in service, \$35,900. Located in Twin Falls ID. Call 208-613-0050



(2) 1977 Freightliner with 20' and 22' steel bed. 5' steel rack and end gate, hoist on both, \$14,900/both OBO. Turner, OR. 503-930-1706

"The Capital Press is IT!" Lorin Zastoupil - Leaburg, Ore. Subscribe at 1-800-882-6789

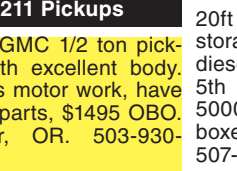
(253) 863-8782
Cell 206-510-4780
sales@pro-truck.com



1997 Utility 34'x96" 2-axle flatbed trailer, wood deck...\$9,950



2006 International dual drive truck tractor, Cummins ISM 10.8 Liter/280 Hp, Eaton Fuller 10-spd., 166" WB, OnBoard Diagnostics (ECM).....\$11,950
www.pro-truck.com 5252725-1



1983 GMC 1/2 ton pickup with excellent body. Needs motor work, have extra parts, \$1495 OBO. Turner, OR. 503-930-1706

222 Truck/ Auto Parts & Accessories

ARMY TRUCKS
4x4 & 6x6
COMPLETE PARTS INVENTORY
MEMPHIS EQUIPMENT
901-774-0600 (TN)
www.memphisequipment.com
THE NATION'S LARGEST ARMY TRUCK DEALER

222 Truck/ Auto Parts & Accessories

222 Truck/ Auto Parts & Accessories

BUMPERS

Replace your light-duty factory bumper for an added measure of safety and protection.



- Powder coated
- All steel
- Colors available
- Driving lights
- Winches available



Call Today Dean 541-419-4170 Shop 541-447-4555 www.prolinefab.com
PRO-LINE FABRICATION
1440 SW Tom McCall Road • Prineville, OR
dean@prolinefab.com

316 Trailers Misc. 316 Trailers Misc. 316 Trailers Misc.

LINN COUNTY FAIR WEEK
July 15th-17th



...and see the ARROW LIVESTOCK HANDLING SYSTEM. Diamond K Sales is the northwest dealer for Arrow Cattlequip

Diamond K Trailer Sales
541-369-2755 • 541-953-7548 • 541-740-5135
View our inventory: diamondksales.com
Your All Service Dealer, Halsey, OR

2224696-1