

Our sales team is here to serve you!

- Real knowledge
- Real people
- Real results!




Anne Long
National Sales & Outside the Pacific Northwest
503-871-7957
along@capitalpress.com



Pat McKenzie
South Willamette Valley, South Oregon, Central Oregon, & California
541-521-9008
pmckenzie@capitalpress.com



Scott Hallett
NW Oregon and W Washington
503-308-2478
shallett@capitalpress.com



Jim Holt
NE Oregon, East Washington & North Idaho
509-413-7674
jholt@capitalpress.com



JoAnn Vanderwey
South Idaho, NE Nevada, & SE Oregon
208-880-4334
jvanderwey@capitalpress.com

Deadline for Classified Display Ads:
Weds. at 10AM
503-364-4431

Deadline for Classified Line Ads:
Weds. at Noon
503-364-4431

Capital Press
1-800-882-6789
CapitalPress.com

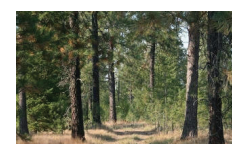
567 Dairy Farms

Buhl, IDAHO
86 Acres: Double 20 parallel, 1,022 head CAFO, brick home, single side trailer, commodity barn, \$1,200,000 for sale or lease. Call Tom Floyd 208-996-5129. Western Idaho Realty

573 Timber Property

20 Acres Heavy Timber with home. Very private, \$700,000. Dallas/ Salem, OR. area 503-560-6036

576 Land



Your secluded paradise! Rare 161.84 parcel with a healthy forest. Great for developing your dream homestead, or develop as an investment. Mostly level to gently rolling terrain, lots of wildlife! End of the county road location. Close to Deer Park airport, shopping & easy commute to Spokane. \$775,000 No Drivebys Jim Palmer Jr 509-953-1666; Website: JimPalmerJr.com Real Estate Marketplace NW

576 Land

20 Acres Heavy Timber with home. Very private, \$700,000. Dallas/ Salem, OR. area 503-560-6036

644 Business for Sale

CASH paid up front for Industrial & Agricultural Scrap Metals. we can dismantle on site. You call we haul. Licensed and insured Serving OR/ WA/ ID/ MT. Troy Snodgrass 503-791-6357 jimcohen@hotmail.com

651 Help Wanted



The Coeur d'Alene Tribe is seeking a qualified candidate to assist with managing certain agricultural lands that are leased to independent operators. The incumbent would coordinate land leases, supervise and evaluate operator performance, ensure timely rent payments are made, coordinate commodity sales, and generate financial and production reports for the Tribal Farm Manager. Salary Range is \$40K to \$55K DOE/ DOQ. Full-time with excellent benefits. Location: Plummer Idaho. For additional information go to: <https://www.cdatribe-nsn.gov/hr/job/> or contact Jim Kackman at 208-686-2066

Assistant Manager O.O. AG

O.O. Ag in Corvallis, OR, has 1,000 acres of hazelnuts with additional acres scheduled to be planted.

Job duties include

- Oversee irrigation
- Equipment Repair
- Oversee all aspects of orchard management
- Supervise crews from 1-30

Benefit package

- Wage \$60,000 to \$70,000
- Employee Healthcare
- Retirement

For more information call 503-334-5117 or email resume to: todd.oaic@gmail.com

WILBUR-ELLIS

Wilbur-Ellis has a few great opportunities to join our sales team! We are currently looking for Agriculture Sales Reps and Sales Trainees to join one of our teams in Adams, OR; Walla Walla, WA; Fairfield, WA and Potlatch, ID. Must have the ability to build strong, lasting relationships and work independently. Ag experience preferred; sales experience a strong plus. Great company, pay and benefits. Apply online at: WilburEllis.com/Careers



579 Acreage

CHEHALIS, WA

20 Acs. of land and timber. Subdivided in (4) 5-acre tracts with building sites after timber is removed. Close in Chehalis, Adna or Chehalis schools. \$275,000. By owner. (360)736-0836

651 Help Wanted



Spray Applicator: Hourly wage, DOE. Benefits. Supervisor role, spray crops. Blend chemicals. Manage inventory, operate farm equipment. Dayton, OR. Apply with resume to: carly@creeksidevalleyfarms.com

Wanted: Farm irrigation and equipment hand. Must have experience in irrigated farm operations, maintenance & repair, and good work ethics. Year round employment with benefits. Please send resume to: 32327 Oregon Trail Road, Echo, OR 97826. 541-376-8444



Coordinator Quality Seed Production

The Coordinator Quality Seed Production position in Oregon is responsible for working outside in a farming environment with varying hours depending on the season. You must be able to lift 50 pounds.

Breeding Activities:

- Breeder/ production note taking for Radish flowering trials, production screen cages.
- Coordinating with Cabbage production specialist and Breeding specialist all cabbage/ kohlrabi seeding and transplant dates for cages, as well as all required note taking of cabbage screen cages during season.
- Developing transplant schedule for all cages and coordinate/ assist in planting with Farm Manager and other employees.
- Monitoring planting activities and planting schedules at greenhouse to ensure all lines are planted according to schedule.

Production Activities:

- Assist in cage layout, to include measuring, staking corner posts uprights, hoop posts.
- Assist in cage erection with crew to include staking, frame erection and netting.
- Responsible for nix manipulation of cabbage/ kale cages, trimming of parents as requested from breeding or production specialist and entry of information in crop file.
- Cabbage/ kohlrabi off type rouging of cages.
- Assist in removal of cages when crops are out of bloom, installation of bird netting.
- Cage cutting and harvest timing of all cages.
- Assist in the harvesting of all cabbage/ kale/ radish cages to include bagging / tagging of seed from combine.
- Milling of radish, cabbage and kohlrabi cages in Quincy Washington according to time frame decided.
- Responsible for final cage report information and flowering trial information submittal to Holland breeding and Production Manager.
- Perform other duties as assigned by farm manager or production manager.

Requirements: College degree in Agriculture, Agronomy, Horticulture, or related Agriculture field preferred and/ or a minimum of 5 years' experience in Agriculture Production.

- Pre-employment drug screening, background check, valid Oregon Driver's License, clean DMV record required.
- Basic computer skills (Microsoft products) Excel, Word, Lotus Notes.
- Data entry of cage or trial information and timely reporting of information to breeding department and Production Specialists.
- Ability to direct seasonal employees and provide clear and open communication.
- Operate plot harvest combines.
- Ability to regularly lift/ move 50 pounds and work in field conditions including heat, dust, cold, rain, and wind.
- Ability to work extended hours during season as required.
- International travel to other company locations required.

Excellent Benefits: Health, Dental and Life Insurance, Long Term Disability, Medical & Dependent Care Reimbursement and Pension Plan.

Interested? Upload your resume and cover letter to https://recruiting.myapps.paychex.com/appone/MainInfoReq.asp?R_ID=3718866 Address your cover letter to Paul Klein, Production Manager of Rijk Zwaan USA Inc. If you experience trouble with the link, please email: Loretta Brown for assistance at L.brown@rijkszwaan.com.

651 Help Wanted

Ranch Job. Full time position. Responsibilities: maintaining & operating equipment, operating hay/ tillage equipment. Housing available. Send resume to: isinghose@yahoo.com Riley, OR. 541-493-1920

Agricultural Employers/ Employees: Nationwide Agri-Business, and Production Career Opportunities. Hansen Agri-PLACEMENT. 308-382-7350. View www.hansenagriplacement.com

Farm Manager Wanted Experience with irrigation travelers, balers and silage trucks required. Scio, OR. Contact Matt 503-930-2738



Mid Columbia Producers is seeking a full time **Seed Production Tech** at its Wasco, OR. Seed Plant. Please find the full job posting on our website: www.mcpcoop.com. We offer a competitive salary and benefits package including: Health insurance premiums currently paid 100% for the employee and their dependents, dental, vision and Rx coverage, 401K with company match, robust profit sharing plan, paid vacation, sick, holidays and more. Call Human Resources at 541-565-2277 for more information. Email: hr@mcpcoop.com



Clackamas Soil and Water Conservation District seeks a **Conservation Specialist** to work with small farms and on rural properties. Working knowledge of plant material, installation, and maintenance, plus a working knowledge of conservation practices is desired.

If you have or are pursuing a bachelor's degree in an agricultural or natural resources based field of study and have one year of directly related conservation planning experience; OR five years of directly related conservation planning experience or any equivalent combination of experience, training, and/ or education, please consider applying for this position. Position description and application form at <https://conservationdistrict.org>

Position closes July 6, 2021. Beaver Creek, OR.

Northwest Horticultural Council

Professional Seeking a Technical Issues Manager to work on technical and regulatory matters pertaining to tree fruit production, conventional and organic, as well as domestic and international commerce. Job requirements: Bachelor's degree, excellent communication skills, five or more years of post university work experience, Microsoft Office fluency. Job located in Yakima, Washington. For a full job description and requirements visit: www.nwhort.org and click on "Current Open Staff Positions." Email cover letter and resume to general@nwhort.org

651 Help Wanted

LOOK! Large Tillamook Dairy looking for full time assistant herdsman. Nice 3 bedroom 2 bath house with full utilities provided. Pay DOE. Call for more details Tillamook, OR. 503-801-2643

Kirk International is seeking a sales representative. We are looking for a sales team member that is excited to come to work, enjoys working with a team, but can also work independently and will proactively seek new sales opportunities. Ag sales background with focus on Christmas trees, nursery stock and industry products preferred. Minimum 3 years' sales experience. Pay DOE + benefits. Send inquiries to: mgilmore@kirkcompany.com. www.kirkcompany.com Oregon City, OR.

H-4 Farms, is looking to hire a hard working farm mechanic. Must have experience repairing & maintaining farm and ranch equipment. To apply or for more information please email: allyson.chapman@aol.com Kahlotus, WA.



St. John Hardware in Fairfield, WA is looking for a full time **Ag Parts Person**. Previous experience is a MUST! Detail Oriented, Organized, Great Computer Skills, and Strong Communication Skills. Please submit resume to: greg.wallace@stjohnhardware.com

"BEST FARM PAPER AROUND!" Gerald Stanton - Granite Falls, Wash. Subscribe! Call 1-800-882-6789

NORTON CATTLE COMPANY

Truck Driving Position
2-3 days per week. Home every night. Approx 350-400 miles/per day. Livestock experience a plus, pulling a 48 Ft ground load gooseneck. Owner operators welcome. Based anywhere between Woodland, WA and Hermiston, OR.
Excellent Pay
Call: 541-475-6681
Email: nortoncattlecompany@gmail.com

664 Services

664 Services

AGPROfessionals
DEVELOPERS OF AGRICULTURE

Everything from Ag to Z...

- Agricultural, Civil & Environmental Engineering
- Environmental & Agronomy Consulting
- Financial Planning & Construction Management
- Land Planning & Permitting
- Legislative, Public Relations & Community Outreach
- Real Estate Services & Site Selection
- Surveying & Geotechnical Testing
- Traffic Studies
- USR Permitting
- Zoning Changes

Idaho Office—208.595.5301
195 River Vista Place #306 Twin Falls, ID 83301

Greeley Office—970.535.1938
3050 67th Ave., Suite 200 Greeley, CO 80634

www.agpros.com

LIME & DOLOMITE

WHEN YOU'RE READY TO LIME - WE'VE GOT IT READY FOR YOU!

- 8 High Flotation Applicators Ready
- 4 Orchard & Berry Applicators

Four Locations in the Willamette Valley

- 2 Locations in St. Paul
- 2 Broadacres Locations

Call Today for Prices & Volume Discounts.

WE'LL GET 'ER DONE!!

Marion Ag Service, Inc.
45 Years Experience Hauling & Spreading
7746 St. Paul Hwy. • St. Paul, OR
1-800-648-2718
503-633-4561
www.marionag.com
support@marionag.com

664 Services

TRIPLE U LOGGING Small Logging Services Land clearing, brush piling. Free Estimates Scio, OR. 971-225-8035

PORTABLE ROCK CRUSHING

Serving Oregon Since 1987
Davidson Construction
541-782-4122 Ask for Bill



Mobile Slaughter Available Game Processing Please call & Schedule Dayton, Oregon 97114 Ben Montelongo 503-864-2500 BensCustomMeats.com



DRAINAGE SOLUTIONS
A Must Before Planting Hazelnuts

Increase yields, provide deeper root growth, improve soil aeration, reduce soil erosion, decrease soil erosion. **Creekside Valley Farms** Serving Oregon and Washington. 503-864-4422

Fence Installed With Hydraulic Post Driver: 503-859-2804
www.statewidedefense.net New Zealand, non-climb horse, sheep & goat, field fence, barbed wire, deer and game fencing, rail fencing and gates. Serving Oregon Since 1993. CCB#93256

SURFACE DRAINAGE SOLUTIONS



CUSTOM LANDFORMING & DITCHING
For surface water management. Scio, OR. arffarms@smt-net.com 503-932-4986 www.arffarms.wordpress.com **A&R FARMS, INC.**

BREEDEN LOG CO.
Land Clearing, Road Constr., Ripping, Ponds, Site Prep, Utilities, Bridges
503-843-2981
503-435-7098 cell
CCB#130229, Lic. Bonded, Insured
Sheridan, OR

VANDERBECK TRUCKING & EXCAVATING INC.

- Ponds, Reservoirs & Dam Construction • Land Clearing
- Road Building • Site Prep
- Land Leveling • Dump Trucking
- Brush Removal
- All Phases Of Excavating
- LICENSED - BONDED
- INSURED
- CCB# 84747
- (503) 871-8632
- Mt. Angel, OR

NOTICE: Oregon Construction Contractors Law
(ORS 701) requires that all businesses that advertise remodeling, repair, home improvement or new construction be licensed with the Construction Contractors Board. An active license means the contractor is bonded and insured.

Verify a contractor's license and complaint history at www.hirealicensedcontractor.com 503-378-4621

NOTICE: Oregon Landscape Contractors Law
(ORS 671) requires that all landscape contracting businesses to be licensed with the Landscape Contractors Board. This four (4) digit number assures the business has a bond, insurance and an associated landscape contractor who has fulfilled the testing and experience requirements for licensure. For your protection, verify & check a license status on our web: www.lcb.state.or.us or call (503) 986-6561 before hiring a landscape business. Landscape Maintenance companies do not have to be licensed to perform maintenance functions on your already installed landscape.

667 Loans & Financing

Financing for the Farming and Ranching communities. Competitive rates. Purchase or refinance. Debt consolidations. Working Capital. Higher LTV's. Credit issues okay. www.farmandranchNW.com 541-903-5248 Azara Mortgage, LLC (nmls#1577943)

\$\$\$ Large Commercial Real Estate Mortgages. Purchase, refinance & construction. Call. Salem, OR. 971-600-4327

AGPROfessionals
DEVELOPERS OF AGRICULTURE

1,350-head Dairy, Buhl, Idaho

\$7.5 MM

Dairy Operation on 160 acres +/-, Fantastic opportunity with an immaculate recently built parlor. Excellent water rights for the farm and dairy. Improvements include a Double 20 Parallel Parlor, heifer/dry cow yard, 7-tower pivot, commodity barn, and home. Cows and rolling stock available for purchase separately from the real estate.

RYAN HOSTETLER
Accredited Land Consultant
303.883.7080
Ryan@Agpros.com

www.agpros.com
195 River Vista Place, #306, Twin Falls, ID
208-595-5301
5247392-1