

**525 Commercial Property**

**Processing Plant, Warehouse, Offices.** Property includes 5.14 Acres and 77,000sqft of buildings and office space. Hot pack processing line, warehouse, and offices. North of Salem, OR. Close to I-5. \$3,000,000 Email: farmforlease18@gmail.com



**Straw/ Hay Warehouse space for sale!** 11,800sqft total building space with 25' eave height & rock base. Space is two buildings on two tax lots totaling 10 ACRES. Located on Hwy 20, south of Lebanon, OR. Asking 1,200,000. MLS#775291 Contact Bill Flesher, Licensed OR. Broker & Commercial Specialist: 541-905-3258 or email BillF@lauragillott.com. **Gillott Home Team, Keller Williams Realty Mid-Willamette**

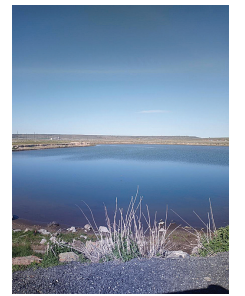
**CALL BY 3PM MON - FRI AND GET YOUR LINE AD ONLINE IN 24 HOURS!** (On approval) Your line ad will also run in the next available print edition of Capital Press.

**Capital Press**  
800-882-6789  
CapitalPress.com

**531 Real Estate Wanted**

Wanted: farm/ farm-house pet friendly private RENTAL within 30 minutes of the 101, anywhere from Neskowin, OR. to Eureka, CA. 216-509-1662

**540 Recreational Property**



**83 Acres 7 miles West of Burns, OR.** 1884 water right on entire parcel. With 30 acres of Native Meadows. Water supplied from numerous year round ground springs & 5.5 acre spring fed pond stocked with bass & blue gill. Best duck & goose hunting area in Harney County. Year round gravel road to property. Excellent homesite overlooking creek. There is a domestic well & pumphouse. Plus 2 small outbuildings on property. Broker owned, \$390,000. Possible Owner Financing. Call for more details. 541-589-2068

IT'S SO EASY TO PLACE CAPITAL PRESS CLASSIFIED ADS... PHONE TOLL FREE 1-800-882-6789

**PUBLISHER'S NOTICE**  
All real estate advertising in this newspaper is subject to the Fair Housing Act which makes it illegal to advertise "any preference, limitation or discrimination based on race, color, religion, sex, handicap, familial status or national origin, or any intention to make any such preference, limitation or discrimination." Familial status includes children under the age of 18 living with parents or legal custodians, pregnant women and people securing custody of children under 18.  
This newspaper will not knowingly accept any advertising for real estate which is in violation of the law. Our readers are hereby informed that all dwellings advertised in this newspaper are available on an equal opportunity basis. To complain of discrimination call HUD toll-free at 1-800-669-9777. The toll-free number for the hearing impaired is 1-800-927-9275.



**546 Rentals, Leases**

Large Warehouse for lease. 2 buildings 50x120, 20ft ceilings, 6000sqft each. Cement floors, 110 lighting. Gated area. \$3000 per month each. 4 month minimum. North of Brooks, Oregon. farmforlease18@gmail.com

**FOR LEASE: 175 Acres,** Newberg and Chapman soil. 1st and 3rd water rights on South Santiam River. Buried main line. Above ground main line, 4000 ft of 3" pipe. 30HP and 60HP pumps. Traveler irrigation sprinkler. Currently in peas. Lebanon, OR. 503-819-6209; brianpaulod89@gmail.com

**Print and online Ag News for ranchers, farmers, vintners, nursery people and more!**

Subscribe today.



**Capital Press**  
1-800-781-3214  
Fax 503-370-4383  
CapitalPress.com

**546 Rentals, Leases**

**WANTED RV Parking**

**WANTED: RV space for parking and living.** Less than 1 hour drive from Portland. \$500/ month + utilities. Call Israel 503-521-6669

**FOR LEASE Vegetable Processing Facility and 2 Storage Buildings** Hermiston Oregon. Processing Facility approximately 58,000 sq. ft. with office, lunch room, receiving area, packing room, two large cold rooms, shop/parts room, staging room, shipping/ loading dock for three (3) trucks, scales); 2 Storage Buildings (30,000 sq. ft. facility with dehumidification; 60,000 sq. ft. facility with computerized refrigeration and dehumidifiers), private railroad spurs for transportation, water rights (well), septic, electricity, water lagoon for waste water. Will possibly rent processing facility and storage facilities separately. Contact Larry Blunck at 503-656-1654 or larry@bluncklaw.com

**555 Mini Ranchettes**



41 acres with 2,056 square foot home. Large shop and garage, large barn with stalls, equipment building and 3 smaller outbuildings. All irrigated meadows with water rights. Well kept and beautifully landscaped with sprinkler system. Close to town on well maintained county road, \$989,000. Pinedale, WY. 307-360-8135 https://www.zillow.com/homedetails/128-S-Bench-Rd-Pinedale-WY-82941/2071447304\_zpid/. betty.cheeney@gmail.com

**561 Ranches**

**IDAHO RANCHES & FARMS WE SPECIALIZE IN TAX-DEFERRED EXCHANGES**

**Bob Jones, Broker** 208-308-6060  
**Mark Jones, Assoc. Broker** 208-308-3030  
208-733-0404  
1766 Addison Avenue E, Twin Falls, ID 83301  
www.RJREALTY.com 5251825-1



**720 ACRE TUCANNON RIVER RANCH**  
• 130 Acre WATER RIGHT  
• Irrigated pasture & cropland with pivot  
• 1 mile of private river frontage and 2 ponds  
• Excellent Steelhead fishing, upland bird & deer hunting  
• Custom Santa Fe Rancher + Original Farmstead  
• Multiple outbuildings, barns and in ground pool  
**A TRUE SPORTSMAN'S PARADISE!!!!**  
110 River Ranch Lane, Dayton Washington \$2,150,000.00  
Please visit WWW.110Riverranch.com for more information

**Jennifer Martin**  
509.540.7019  
Jennifer@WallaWallaSIR.com

**Walla Walla Sotheby's INTERNATIONAL REALTY**

**NE OREGON**

194 AC timber, meadows N of Elgin. Custom home, 2nd home, outldgs & more. This setting & view is unbelievable, private yet not remote. Off grid with every creature comfort possible. Wildlife and so much more. A must see. Call for complete details. **Only \$1,250,000.**

**BEAVER CREEK, OREGON**

7,300 deeded acre ranch in one block. Timber, range and irrigated meadows with 2 miles of Powder River thru ranch. Excellent hunting and priced to sell. **\$6,000,000.**

**Intermountain Realty, Inc.**  
1425 Campbell Street  
Baker City, OR 97814  
Intermountainland.com  
541.523.4434

**561 Ranches**

**CEDARVILLE, CA. HAY & CATTLE RANCH.** 296+/- ACRES flood irrigated meadows, 1st water right, comfortable vintage home, barns, corrals \$1,420,000; **176+/- ACRES fenced spring grazing ground north of Davis Creek, CA.** with ponds & well \$175,000. Buy one or both. Call 530-250-7122

Looking For A Relaxed Off Grid Lifestyle? This Property Is A "Must See"! 2544 Deeded Acres with 283 Irrigated & 2260 BLM. Run 75 to 100 Head Of Cattle. Prior 18 Years Guest Ranch Sleeps 12, Hunt Trophy Mule Deer, 8 Ponds, Home, Shop, Barn, Stalls, Greenhouse, Hay Storage, 30 Miles From Lakeview, OR. \$2,200,000 RMLS #21237893 541-575-2617 www.dukewarnerrealtyofeasternoregon.com ljh@ortelco.net

Looking for a farm or ranch? VISIT **FarmSeller.com**

**KNIFE LAND**

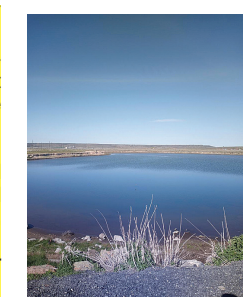
**Timbered Land - OR**  
Timbered land parcels in NE Oregon ranging in size from 795± to 9,772± acres, all with great hunting and recreation. **\$1,140,000 - \$9,319,000**  
**Cascade Timber Ranch NEW - ID**  
640± acres with meadows, timber, a creek, & ponds. **\$5,350,000.** Or purchase 320± acres \$2,970,000.  
**Carey Farm - New - ID**  
30± air miles south of Sun Valley, 436± acres has 250± acres irrigated by 5 pivots and 3 wheel lines, & 1,288± sf home. Zoned for 1 home per acre, or 1 home per 10 acres. May work well to develop. **BTVD \$3,500,000**  
208.345.3163 knipeland.com

**564 Farms**

**Nursery Land Sandy, OR**

20 Acres Plus Home Imagine your life enjoying the peaceful surroundings on this 20 acre property. Featuring gorgeous territorial views plus creek and private pond. 3758sqft daylight ranch offers 5 bedrooms, 3 baths, tile roof, newer furnace and heat pump. A dream 40'x80' shop with separate office and 1/2 bath. Make yourself at home here. \$1,195,000. Call Kris Shuler broker 503-680-8191 John L. Scott

**564 Farms**



**83 Acres 7 miles West of Burns, OR.** 1884 water right on entire parcel. With 30 acres of Native Meadows. Water supplied from numerous year round ground springs & 5.5 acre spring fed pond stocked with bass & blue gill. Best duck & goose hunting area in Harney County. Year round gravel road to property. Excellent homesite overlooking creek. There is a domestic well & pumphouse. Plus 2 small outbuildings on property. Broker owned, \$390,000. Possible Owner Financing. Call for more details. 541-589-2068

**Home on 80.94 Acres Sublimity, OR.**

2400sqft manufactured home with 4 Bedrooms; 2.5 baths. Panoramic and territorial views overlooking existing farmland stretching to the coast range. Currently farmed 61 acres of Christmas Trees, leased through 04/2023. Lease income is \$9600/year. Previously farmed in grass seed. Majority is Nekia soils. Outbuildings include barn, pump house, and shed. Contingent upon access easement being recorded prior to closing. Whitney and Mike Ulven, Brokers, Silverton Realty 503-705-6118; 503-510-6533; Email: whitney@silvertonrealty.com Visit: www.silvertonrealty.com

2 Certified Organic Farms For Lease: 100 acre, old, old dairy farm. 50 acres water rights. Farm next door is 82 acres with 65 acre water rights. Scio, OR. 541-990-0272

**HOT! SAVINGS at Capital Press 1-800-882-6789**  
CapitalPress.com

**564 Farms**

**FarmSeller FARMSELLER.COM Find the land, farms, and ranches you're looking for**

**DIRECTORY OF PREMIUM AGENCY MEMBERS**

- Brook Havens** Cascade Sotheby's International Realty 541-604-0788
- Patty Cordoni** Cascade Sotheby's International Realty 541-771-0931
- Pam Mayo-Phillips** Cascade Sotheby's International Realty 541-480-1513
- Linda Long** Crater Lake Realty Chiloquin, OR 541-783-2759
- Jerry Franklin** Eastern Oregon Realty John Day, OR 541-575-2121
- Tim Cobb** Farmland Company Spokane, WA 509-624-4408
- Robert Bacon** Fischer Nicholso Realty Klamath, OR 541-545-1510
- Stacey Moyles** Century 21 Showcase Realtors, Inc. Klamath Falls, OR 541-882-2121
- Lisa Johnson** Horsepower Real Estate Junction City, OR 541-510-4601
- John Lee** Lee Real Estate Aumsville, OR 503-245-9090
- Paul Terjeson** Oregon Farm Brokers Corvallis, OR 503-999-6777
- Jason Nash** Keller Williams Realty Southern Oregon 541-591-5195
- Steve Helms** Keller Williams Farm & Ranch Albany, OR 541-979-0118
- Curtis Hitchcock** Knipe Land Company Boise, ID 208-866-2825
- Janey Knipe** Knipe Land Company Boise, ID 208-345-3163
- John Knipe** Knipe Land Company Boise, ID 208-345-3163
- Tom Gill** Knipe Land Company Mountain Home, ID 208-860-0776
- Julie Mansfield-Smith** Mossy Oak Properties Copper Creek Land Co. Kimberly, OR 541-519-6891
- Jake Polvi** POLVI Bend, OR 541-410-3050
- John Collins** Ranch-N-Home Realty La Grande, OR 541-963-5450
- Judy Willis** Real Estate Associates Joseph, OR 541-432-4060
- Ken Wick** Real Estate Associates Joseph, OR 541-432-4060
- Mark Jones** Robert Jones Realty Twin Falls, ID 208-733-0404
- Kirk Makin** Ruby Peak Realty Joseph, OR 541-432-3131
- Claessee O'Connor** Timberline Realty Joseph, OR 541-432-1234
- Jim Whitney** Whitney Land Company Pendleton, OR 541-278-4444
- Todd Longgood** Whitney Land Company Pendleton, OR 541-278-4444
- Robert Carnahan** Artisan Real Estate Associates Dufur, OR 503-313-0419

- CALIFORNIA**  
HOLLISTER SAN BENITO REALTY 831-637-5563
- IDAHO**  
BOISE KNIPE LAND 208-345-3163  
POCATELLO INTERMOUNTAIN LAND EXCHANGE, INC. 208-232-8306  
STAR FLINDERS REALTY & EXCHANGE 208-334-3840  
TWIN FALLS ROBERT JONES REALTY INC. 208-733-0404
- MONTANA**  
BILLINGS ROCKY MTN. RANCH REAL ESTATE 406-259-6666  
MISSOULA STELLING RANCH & LAND 406-728-9200
- NEVADA**  
FALLON BERNEY REALTY LTD. 775-426-8023
- OREGON**  
ALBANY KELLER WILLIAMS FARM & RANCH 541-979-0118  
AUMSVILLE LEE REAL ESTATE 503-245-9090  
BAKER CITY AGRILANDS REAL ESTATE 541-853-1212  
INTERMOUNTAIN REALTY 541-523-4434  
BEND CASCADE SOTHEBY'S INTERNATIONAL REALTY (PAM MAYO AND BROOK HAVENS) 541-923-1376  
CASCADE SOTHEBY'S INTERNATIONAL REALTY (PATTY CORDONI) 541-771-0931  
COLDWELL BANKER BAIN 541-280-4372  
FAY RANCHES 541-419-0770  
POLVI 541-410-3050  
BONANZA FISHER NICHOLSON REALTY, LLC 541-545-1510  
BURNS JETT BLACKBURN REAL ESTATE 541-573-7206  
CHILOQUIN CRATER LAKE REALTY 541-783-2759  
CORVALLIS OREGON FARM BROKERS 503-999-6777  
DAYVILLE DUKE WARNER REALTY 541-987-2363  
DUFUR ARTISAN REAL ESTATE ASSOCIATES 503-313-0419  
JOHN DAY EASTERN OREGON REALTY 541-575-2121  
JOSEPH REAL ESTATE ASSOCIATES 541-432-4060  
TIMBERLINE REALTY 541-432-1234  
RUBY PEAK REALTY 541-432-3131  
JUNCTION CITY HORSEPOWER REAL ESTATE 541-510-4601  
KIMBERLY MOSSY OAK PROPERTIES CUPPER CREEK LAND CO. 541-519-6891  
KLAMATH FALLS KELLER WILLIAMS REALTY SOUTHERN OR 541-591-5195  
CENTURY 21 SHOWCASE REALTORS, INC. 541-882-2121  
LA GRANDE RANCH-N-HOME REALTY 541-963-5450  
LAKEVIEW HIGH COUNTRY REAL ESTATE 541-417-0250  
MEDICAL SPRINGS AGRILANDS REAL ESTATE 541-853-1212  
NORTH BEND CADWELL REALTY GROUP 541-740-9854  
RE/MAX SOUTH COAST 541-290-1850  
ONTARIO TOM PHILLIPS AGENCY 541-889-8401  
PENDLETON WHITNEY LAND CO. 541-278-4444  
SALEM AGRI-BUSINESS REAL ESTATE 503-371-6409  
SILVERTON HARCOURTS NW OREGON REALTY GROUP 503-873-8600  
WILSONVILLE WOLF PROPERTIES UH 503-682-1789
- TEXAS**  
DIMMITT SCOTT LAND CO. 800-933-9698
- WASHINGTON**  
BURLINGTON RE/MAX TERRITORY NW 360-755-9494  
CHEHALIS CENTURY 21 LUND REALTORS 360-748-8619  
SPOKANE FARMLAND COMPANY 509-624-4408  
TOLEDO RE/MAX PREMIER GROUP 360-520-4810