

210 Trucks



2014 VOLVO VNM42T200: Day cab, D11, 385HP, diesel, automatic, 352,023 miles. 170"WB, Jake, air ride suspension, aluminum wheels, Lo Pro 22.5 tires, (2) 80 Gallon Fuel Tanks, \$19,950. Located in Phoenix, AZ. Tom 602-818-4391

210 Trucks



2001 IHC 4900 single axle dump truck. 7 to 8 yard. DT466 Diesel. Allison 6 speed. Automatic. PS, AC, CC. 150K. ACTUAL MILES. Near new 11/22.5 radials. Very clean and well maintained former State truck that is RUST FREE and work ready, \$18,900. Located in Twin Falls ID. Call 208-613-0050

210 Trucks

1985 International Truck, 2200 series, zero miles on rebuilt 466. Tandem, 22ft bed, Harsh hoist, 5ft high racks, \$25,000. Salem, OR. 503-551-3233

2002 Freightliner FLD120: Detroit DDEC-4, 18 speed, 234" wheelbase, 90% rubber on drivers, setback front axle, 70" flat top sleeper. Good paint. \$25,000 OBO. Pictures Available. Lewiston, ID. 208-743-8274

Service Pickup: 1983 Chevy 3/4 ton crew cab, 4x4, compressor, welder, torch, tools, fuel tank, excellent condition, \$12,500. Photos on request. Prineville, OR. 541-410-4367

210 Trucks

1974 GMC Truck: 6000 Series, 5 and 2, V8, 18ft steel bed with hoist, \$4500. Salem, OR. 503-990-1219

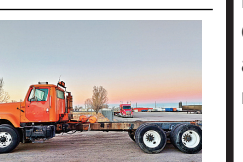


1991 Ford 8000 Fire Engine. 3208 Turbo Cat Diesel. Allison AT. Hale Power Shift pump and apparatus. 1000 GPM @150 PSI. 1200 Gal. Tank. Water Cannon, draft hard hose and ladders and all emergency equipment. Former County truck that is clean as new and operates the same, \$9900. Located in Twin Falls, ID. Call 208-613-0050

210 Trucks



2007 Freightliner M2 with CAT motor, 258,836 miles with Refer box, cold plates, 26,000GVW, \$12,000. Kent, WA. 253-736-2278



2001 IHC 2574 tandem axle cab and chassis, N-14 Cummins, 13 speed. 112,000 ACTUAL MILES. Jake, PS, AC, PS. Traction lock. 164" cab to trunnion. Double frame full length. Hendrickson spring rears. 64,000 GVW. Near new 22.5 Radial tires. Former California DOT truck that has had excellent maintenance. Runs, drives and operates like new. NO RUST! \$29,000. Located in Twin Falls ID. Call 208-613-0050



2006 Sterling side loader refuse truck with 26,000 ACTUAL MILES. AM-REP, AMOCALTP0-19 body. Cummins ISL 8.9 L. with Allison Automatic. Backup and load cameras. 60K GVW. 385 and 315/22.5 like new radial tires. Exceptionally clean and well maintained truck from a City near Los Angeles. DOT current, and it is work ready, \$18,900. Located in Twin Falls ID. Call 208-613-0050



2007 Freightliner Columbia. 450 hp engine, 13 speed smart shift transmission. 49,000 original miles. Pre-emission, Extremely clean, \$52,000. Call Tim 503-719-2545



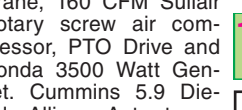
1979 International Cabover Big Cam 350, 13 speed, wet kit. 660,000 original miles, \$8,500. Atwater, CA. 209-604-1342



1996 Ford LN7000 with mechanic's bed, 6500 LB. All hydraulic Auto Crane, 160 CFM Sullair Rotary screw air compressor, PTO Drive and Honda 3500 Watt Gen-set. Cummins 5.9 Diesel. Allison Auto transmission. PS, AC. 80,000 ACTUAL MILES. One owner truck from a large Southern California County. In near new condition, \$15,900. Located in Twin Falls Idaho. Call 208-613-0050



1988 IHC 1900 Dump Truck. 7 to 8 yard. 4x4. DT466 Diesel. Allison Automatic 2 speed transfer. 41,000 Actual Miles. Good rubber. One owner former Municipal truck. Runs and works like new, \$14,900. Located in Twin Falls ID. Call 208-613-0050



2001 Freightliner Transfer Dump Truck. 15 yard main with HiLift airgates on truck and trailer. CAT C12 Diesel. 410HP. 13 speed. Jake Brake, CC, AC, PW. 80% 11/22.5 radials on alloy wheels. This one owner truck is spotlessly clean and has been well maintained. NO RUST, NO DAMAGE. Runs drives and operates like new, \$34,900. Located in Twin Falls ID. Call 208-613-0050



1965 GMC 6X6 FIRETRUCK. 302 GMC 6 cylinder gas. Automatic transmission. Hi-Lon transfer. 1500 Gallon tank. Hose reel with hose. Has draft. Good rubber. 25,000 Miles. All original military firetruck later acquired by an Oregon County. Firetruck runs drives and operates well and is work ready, \$9500. Located in Twin Falls ID. Call 208-613-0050



2005 Transcraft 45' 2-axle flatbed trailer, air ride susp., alum. deck, road & curb side winches \$14,500



1997 Fontaine 48' 2-axle flatbed trailer, air ride susp. wood deck \$9,950

WANTED
We've Moved to Salem, OR!
"Fairly Honest Neil"
I BUY TRUCKS
Specializing In Running or NOT!
In The Pacific Northwest
503-521-6935
HAGERMAN INC
11000 Portland NE, Salem, OR
neil@hagermanparts.com



1997 International 8100 S/A Day Cab, 33 GVW, Cummins M-11, 359K Miles, 10 Speed, 4.11 Ratio, Air Ride, Well Maintained, DOT'd..... \$11,900



1991 Entyre Oil Spreader, 1500 Gal., 12" Spreader, Diesel Burner. On non-roadable trailer \$1000 or Make An Offer



1998 Isuzu FTR 26' Box, Non CDL, 25,950 GVW, Isuzu Diesel, 473K Miles, 6 Speed Manual Trans., 26" L x 96" W Box, Tuckaway Liftgate. Fleet Maintained... \$8,900



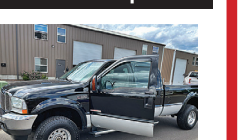
2005 GMC W4500 Flatbed. Non CDL, Isuzu Diesel, 151K Miles, Automatic, 12' L x 96" W, With bed, Hitch Assembly. Good Runner \$16,500



1996 Freightliner Classic: 470 Detroit, super 10 speed, 22" tires, brand new wet kit, never used. Less than 100,000 on engine rebuild, \$45,000 Twin Falls, ID. 208-539-5850



1988 Kenworth T800 with 21ft. roller deck dump bed. NTC Cummins Diesel. 13 speed. Jake, AC, PS. 236K MILES. 70% 11/22.5 radials. Very clean and well maintained original owner truck that is rust free and work ready, \$17,900. Located in Twin Falls ID. Call 208-613-0050



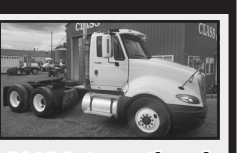
2004 Ford F350: 4 door, Lariat 4WD diesel, 1 owner, 166,000 miles, snug lid, air bags, new tires, radiator, fuel pump, etc. All warranty and repairs done at dealer, \$21,500. Salem, OR. 503-910-4010; Westernag@msn.com

Emerald Truck Sales
ALL ABOUT GOOD USED TRUCKS
253.304.2212 • emeraldtrucksales.com
TACOMA, WA

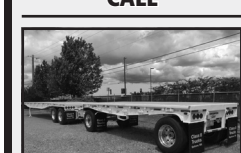
CLASS 8 TRUCKS
509-534-9088



2008 Peterbilt 386 Cummins ISX, 18 spd., lockers, drop axle, wet kit. CALL \$24,900



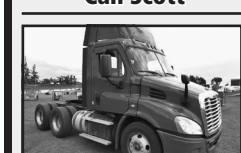
2010 International Prostars Cummins ISX 475, Jakes, 10 spd., 3.70 ratio, air ride, no DPF, no EGR. \$24,900



A-Trains available to rent. Daily, Weekly, Monthly Rates. Reserve yours today! Call Scott



2011 Freightliner Cascadia Detroit DD13, 450 hp, 10-spd., A/C, air ride, simple clean trucks, good miles...CALL



2015 Freightliner Cascadia Detroit DD13, 450 hp, auto. trans., A/C, air ride, easy driving truck...CALL



1999 Freightliner FLD112 Cummins M11 425 hp, 10 spd., A/C, 3.90 ratio. \$19,900

222 Truck/ Auto Parts & Accessories

222 Truck/ Auto Parts & Accessories

222 Truck/ Auto Parts & Accessories

FLATBEDS
Pro-Line all steel flatbeds are complete, installed, wired, and ready to work!

- Powder coated
- Colors available
- Mud flaps
- Treated T&G wood deck
- Backup, clearance & work lights
- Trailer plug
- Gooseneck access with cover
- Stop & turn lights on cab guard

Also, check out our Economy Flatbed! All steel, wired, ready to work. You install.
Call Today Dean 541-419-4170 Shop 541-447-4555
www.prolinefab.com
PRO-LINE FABRICATION
1440 SW Tom McCall Road • Prineville, OR
dean@prolinefab.com

222 Truck/ Auto Parts & Accessories

Capital Press Ag Weekly
It works!
"I ran an A-I Bred Heifer ad under Dairy Cattle in Capital Press and got excellent results."
Ray Williams
Milton-Freewater, OR
Call to place your ad!
AD DEADLINES:
Classified Display Ads Wednesday at 10AM
Classified Line Ads Wednesday at Noon

228 Tires & Wheels

USED FLOTATION TIRES
66x43.00 - 25
18.4 - 16.1
16.5L - 16.1
66x43.00 - 25
18.4 - 16A
48x31.00 - 20
21.5L - 16.1SL
13.6 - 28
16.0 - 24
18.4 - 34
Meridian, ID
208-888-1376

301 RVs & Travel Trailers

2010 38' Montana 5th wheel, 4 slide outs, large refrigerator, freezer, replace, 2 tvs, dish satellite, central vac, hook-up for washer/ dryer, 1 queen, 1 king bed, A/C, heater. Non-smoking, Onan generator, \$25,000 OBO. Summerville, OR. 541-805-1030, 541-786-8147

Alpenlite 1999, 30ft 5th wheel, one large slide out, kitchen in back, dining table, 4 chairs, 2 queen beds, central vac, A/C, heater. Non-smoking, \$15,000 OBO. Summerville, OR. 541-805-1030, 541-786-8147

222 Truck/ Auto Parts & Accessories

"I get great results with Capital Press...and I have for over 20 years."
Mark, Pro Truck
Call 1-800-882-6789 to advertise.

316 Trailers Misc.

Miscellaneous
3 axle equipment trailer, 20ft semi pull trailer, 45ft storage vans, (2) 1980 diesel trucks, 1 Bartlett 5th wheel, 2 fork lifts, Salem, OR. 503-507-6532



2016 Frontier 30ft grain hopper trailer with Fruehauf 18' pup trailer, \$16,000. 1970 Star 26ft 3 axle potato pull trailer, \$2750. George, WA. 509-398-2000 No text.

B train double 32 ft. flatbed hay trailers. Lead 1985 Great Dane; Pup 1986 Alloy. Good brakes and tires. Recently inspected and ready to go, \$17,000. Cove, OR. 541-786-4332

A-Train Flatbed Set: 1967 Peerless 40ft lead, 1974 Fruehauf 24' pup. Newer hub piloted axles, aluminum rims, \$29,000. Sheridan, OR. 503-435-8572

351 Farm, Yard, Estate Sales

Polk Flea Market
Features Auto Swap Vendors. July 3rd & 4th. Polk County Fairgrounds and Event Center Rickreall OR. 97351. VENDOR SPACE AVAILABLE Inside and Outside. For Information Contact: Dan Koonce: 503-932-8004 or Deb Thomas: 503-428-8224. RV Space Available on Site. Come Hang out with Friends!

ARMY TRUCKS
4x4 & 6x6
COMPLETE PARTS INVENTORY
MEMPHIS EQUIPMENT
901-774-0600 (TN)
www.memphisequipment.com
THE NATION'S LARGEST ARMY TRUCK DEALER

354 Auction Sales 354 Auction Sales 354 Auction Sales

BX Butte Farm Auction
Online Only Auction
Bidding Starts: 6.30.21 - Bidding Ends: 7.7.21
(12) TRACTORS - SWATHERS - COMBINES - LOADERS - FEEDERS - TRUCKS & BEDS - SILAGE & MANURE TRUCKS - SPREADERS - TRAILERS - BEET & GROUND WORKING EQUIPMENT
Terms: Payment required in full within 48 hours after auction. Credit cards and wire transfers accepted. All items "as is", no warranty.
To view all available auction items and register to bid, go to www.bigmountainauctions.com

Keith Couch
Owner/ Auctioneer
208-431-9300
www.bigmountainauctions.com

354 Auction Sales 354 Auction Sales 354 Auction Sales 354 Auction Sales 354 Auction Sales

BOOKER AUCTION service beyond buy & sell
On Now Bidding is Open
June 30 Othello WASHINGTON
Pacific Produce Inc - Equipment & Real Estate
Packing Line Liquidation
All lots offered separately or combined



Port of Othello Water & Gas 2 Warehouse Properties, 1 w/ Rail 1 Undeveloped Lot w/ Scale Multiple Potato/Onion Packing Lines
Preview by Appointment
Merle Booker, Broker 509-492-1998
Bidding Requires Deposit
Camille Joe 509-989-1061 509-386-6767
Austin Office 509-989-1062 509-297-9292