



Access Capital Press any where, any way you want it.

Print
Capital Press Ag Weekly is written for the Northwest region's Ag Community

E-edition
An exact digital copy of Capital Press. Easy to use - easy to share articles.

E-mail Newsletters
The latest top ag stories sent weekly.

Website
CapitalPress.com news and ads updated 5 days a week.

1 year \$55

2 years \$100

EZ Pay \$4 month



1-800-781-3214
CapitalPress.com

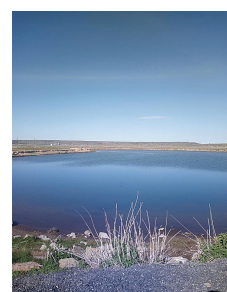
564 Farms



Home and Farm Brooks, OR.
For sale by owner \$975,000. Home is approximately 2,330 square feet, includes 3 bedrooms, 2 full and one-half bathrooms, living room, family room, dining room, kitchen, office, and a single car attached garage. Farm is approximately 17.5 acres with an underground irrigation system. Farm comes with two warehouses, two sheds, one greenhouse, and an outdoor refrigerated room. Farm is currently in production with two varieties of blueberries that are ready for harvest in June. Blueberries are grown in 14 rows, with each row measuring over 400ft. If interested, inquire today! Call 971-240-1168.

Nursery Land Sandy, OR

20 Acres Plus Home Imagine your life enjoying the peaceful surroundings on this 20 acre property. Featuring gorgeous territorial views plus creek and private pond. 3758sqft daylight ranch offers 5 bedrooms, 3 baths, tile roof, newer furnace and heat pump. A dream 40'x80' shop with separate office and 1/2 bath. Make yourself at home here. \$1,195,000. Call Kris Shuler broker 503-680-8191 John L. Scott



83 Acres 7 miles West of Burns, OR. 1884 water right on entire parcel. With 30 acres of Native Meadows. Water supplied from numerous year round ground springs & 5.5 acre spring fed pond stocked with bass & blue gill. Best duck & goose hunting area in Harney County. Year round gravel road to property. Excellent homesite overlooking creek. There is a domestic well & pumphouse. Plus 2 small outbuildings on property. Broker owned, \$390,000. Possible Owner Financing. Call for more details. 541-589-2068

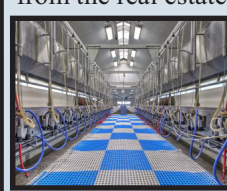


ADVERTISING IN CAPITAL PRESS IS A CASH COW!
CALL TODAY TO PLACE YOUR AD
1-800-882-6789
FAX (503) 370-4383
CapitalPress.com

567 Dairy Farms



1,350-head Dairy, Buhl, Idaho
\$7.5 MM
Dairy Operation on 160 acres +/-, Fantastic opportunity with an immaculate recently built parlor. Excellent water rights for the farm and dairy. Improvements include a Double 20 Parallel Parlor, heifer/dry cow yard, 7-tower pivot, commodity barn, and home. Cows and rolling stock available for purchase separately from the real estate.



RYAN HOSTETLER
Accredited Land Consultant
303.883.7080
Ryan@Agpros.com

564 Farms



44 Acres on the Southern Oregon Coast, sunny, private, south facing spot out of the coastal fog. Custom 3 bed/2.5 bath ICF home built in 2016. Radiant heated floors throughout, custom alder cabinets, stainless appliances, heated concrete tubs, carpet, huge shop, barn, guest cottage, pasture, mature timber, fenced and cross fenced, 5 30x50 greenhouses, gravity fed spring water with water rights. Licensed Oregon real estate broker owned \$789,000. Langlois, OR. 541-253-6031 anna.beachlooprealty.com. anna@beachlooprealty.com.

Home on 80.94 Acres Sublimity, OR.

2400sqft manufactured home with 4 Bedrooms; 2.5 baths. Panoramic and territorial views overlooking existing farmland stretching to the coast range. Currently farmed 61 acres of Christmas Trees, leased through 04/2023. Lease income is \$9600/year. Previously farmed in grass seed. Majority is Nekia soils. Outbuildings include barn, pump house, and shed. Contingent upon access easement being recorded prior to closing. Whitney and Mike Ulven, Brokers, Silverton Realty 503-705-6118; 503-510-6533; Email: whitney@silvertonrealty.com Visit: www.silvertonrealty.com

567 Dairy Farms

Eastern Oregon Dairy
400 Acres, Double 12 Parallel Barn, 3 Homes, Shops, Free stalls, 300 Acres irrigated with pivots. Includes all Cows and Heifers & Sorento Milk Base. \$4,000,000
Downs Realty
Call **Chet 208-866-5540** or **Tom Floyd 208-996-5129, Dairy Consultant, Caldwell, ID.**

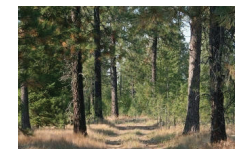
Treasure Valley Dairy

95 Acres, Double 8 Herringbone Barn, Milk Silo, Home, Shop, Free stalls, Loafing Sheds, Commodity Barn. Includes all Cows & Heifers & Sorento Milk Base, \$3,500,000 Call Tom Floyd at 208-996-5129 Western Idaho Realty, Caldwell, ID.

Buhl, IDAHO

86 Acres: Double 20 parallel, 1,022 head CAFO, brick home, single side trailer, commodity barn, \$1,200,000 for sale or lease. Call Tom Floyd 208-996-5129. Western Idaho Realty

576 Land



Your secluded paradise! Rare 161.84 parcel with a healthy forest. Great for developing your dream homestead, or develop as an investment. Mostly level to gently rolling terrain, lots of wildlife! End of the county road location. Close to Deer Park airport, shopping & easy commute to Spokane. \$775,000 No Drivebys Jim Palmer Jr 509-953-1666; Website: JimPalmerJr.com Real Estate Marketplace NW

1-800-882-6789 CapitalPress.com

567 Dairy Farms

579 Acreage

CHEHALIS, WA
20 Acs. of land and timber. Subdivided in (4) 5-acre tracts with building sites after timber is removed. Close in Chehalis. Adna or Chehalis schools. \$275,000. By owner. (360)736-0836

644 Business for Sale

CASH paid up front for Industrial & Agricultural Scrap Metals. We can dismantle on site. You call we haul. Licensed and insured Serving OR/WA/ID/MT. Troy Snodgrass 503-791-6357 jmcxhen@hotmail.com

651 Help Wanted



We currently have an opening for a Feedlot Cowboy at our Simplot Feeders in Burbank, WA. Duties: Monitors cattle by riding the feedlot pens on horseback in order to identify sick, injured, or stressed animals; removes the sick or injured cattle from pens in order to be medically treated. Assists with the receiving, shipping, sorting, and processing of cattle. Requirements: *1-2 years experience *Ability to saddle and ride a horse. *Must provide own tack. Full-time, bunk house availability, & competitive benefits. For Job Description and to apply visit: careers.simplot.com Job ID: 3696 You may also email resumes to Melissa.simpson@simplot.com Burbank, WA. 208-780-2778

HELP WANTED

Ranch Manager to operate a 12,000 Acre cattle, hay and grain ranch. 1000 acres farmed. Pay DOE. Housing Furnished. Benefits. Midvale, ID. 208-355-2308



Northwest Horticultural Council Seeks Technical Issues Manager

The Technical Issues Manager works on technical and regulatory matters pertaining to tree fruit production, conventional and organic, as well as domestic and international commerce. Job requirements: Bachelor's degree, excellent communication skills, five or more years of post university work experience, Microsoft Office fluency. Job located in Yakima, Washington. For a full job description and requirements visit: www.nwhort.org and click on "Current Open Staff Positions." Email cover letter and resume to general@nwhort.org

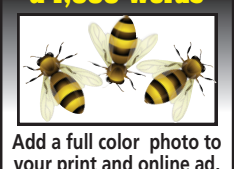
LOOK!

Dairy Farm Mechanic wanted for general maintenance and repairs of farm machinery, trucks, and tractors. Light plumbing and electrical experience a plus. Nice 4 bedroom house with full utilities provided. Pay DOE. Call for more details Tillamook, OR. 503-801-2643



Mid Columbia Producers is seeking a full time **Seed Production Tech** at its Wasco, OR. Seed Plant. Please find the full job posting on our website: www.mcpcoop.com. We offer a competitive salary and benefits package including: Health insurance premiums currently paid 100% for the employee and their dependents, dental, vision and Rx coverage, 401K with company match, robust profit sharing plan, paid vacation, sick, holidays and more. Call Human Resources at 541-565-2277 for more information. Email: hr@mcpcoop.com

A picture is worth a 1,000 words



Add a full color photo to your print and online ad.
Capital Press
800-882-6789
CapitalPress.com

651 Help Wanted

LOOK!
Large Tillamook Dairy looking for full time assistant herdsman. Nice 3 bedroom 2 bath house with full utilities provided. Pay DOE. Call for more details Tillamook, OR. 503-801-2643

HELP WANTED

Hay and Seed Truck Driver Wanted: local driving only, no CDL required. Farm endorsement, valid DOT medical card required. Scio, OR. 503-932-4986

Now Hiring

Manager of Nursery Operations: We are a mid to large scale herb and essential oil farm with many varieties of plants from Sage to Lavender. We grow hundreds of varieties of plants! We are looking for a positive, goal oriented leader that can follow the strict SOP's that have been established over the years and help us deliver a stronger execution while coaching a diverse group of associates. The right candidate is a professional, goal oriented, positive person that has an extremely stable job history and wants to grow and learn in a very fun, dynamic environment. We are growing and expanding other areas of our business as well so there are exciting opportunities! Email resume to: elitesoilbend@gmail.com

Farm Mechanic Wanted: Salem, OR. area. Full time. Must have experience repairing/ maintaining all types of farm equipment and diesel vehicles. Please email resume to: helpwanted@capitalpress.com with FarmMechanic03 in subject line.

HELP WANTED

Yard Worker Wanted: Feedlot and auction yard employer is seeking a reliable, self-motivated, organized individual with at least 2 years livestock experience. Duties would include but not limited to feed truck operating and handling livestock, maintaining & operating farm machinery, trucks, skid steer, and loaders and general maintenance. Job is located in rural north Idaho community. Salary DOE. For more information: Call 208-962-3284 or mail general application or resume to PO Box 178, Cottonwood, ID 83522

EXPERIENCED RANCH HANDS WANTED

No Wannabes. Large South Central Idaho Ranch runs from desert to timber. Duties include: riding, feeding, doctoring, fencing, cleaning mountainous terrain, moving cattle. **YEAR ROUND.** Equipment experience is good also. Contact John Text Only 208-863-4275 or email irondragonmistress@yahoo.com

Farm Employee- Northern Idaho.

The duties for this position vary depending on the time of year, so it is crucial for the individual to be flexible and have a good attitude with the changing seasons. **Qualities:** • Dependable, honest, hard working and a team player. **Responsibilities:** • Repair, maintain, operate farm equipment. • Assist with the production, growing, storing and harvesting of multiple crops including wheat, garbs, peas, barley and alfalfa. Pay DOE. Located in Northern Idaho. Lots of opportunities for hunting and fishing. Call 208-285-0155 or email clintzff@gmail.com

FARM WORKER NEEDED

Seeking year round employee. Requirements: ability to operate & maintain farm equipment. Willing to work extended hours seasonally. Very competitive pay and benefits. Wage DOE. **Cornelius, OR. 503-628-2513**

HELP WANTED

Field Shop Mechanic Please apply in person at **National Frozen Foods** 745 30th Ave SW Albany, OR 97322
Farm Manager Wanted Experience with irrigation travelers, balers and silage trucks required. Scio, OR. Contact Matt 503-930-2738

651 Help Wanted

Agricultural Employees/ Employees: Nationwide Agri-Business, and Production Career Opportunities. Hansen Agri-PLACEMENT. 308-382-7350. View www.hansenagriplacement.com



The Coeur d'Alene Tribe is seeking a qualified candidate to assist with managing certain agricultural lands that are leased to independent operators. The incumbent would coordinate land leases, supervise and evaluate operator performance, ensure timely rent payments are made, coordinate commodity sales, and generate financial and production reports for the Tribal Farm Manager. Salary Range is \$40K to \$55K DOE/ DOQ. Full-time with excellent benefits. Location: Plummer Idaho. For additional information go to: https://www.cdatribe-nsn.gov/hr/job/ or contact Jim Kackman at 208-686-2066

Assistant Manager O.O. AG

O.O. Ag in Corvallis, OR. has 1,000 acres of hazelnuts with additional acres scheduled to be planted. **Job duties include** •Oversee irrigation •Equipment Repair •Oversee all aspects of orchard management •Supervise crews from 1-30 **Benefit package** •Wage \$60,000 to \$70,000 •Employee Healthcare •Retirement For more information call 503-334-5117 or email resume to: todd.ooaic@gmail.com

651 Help Wanted

WANTED: Firework Stand Operators. Boise and Nampa, ID. \$750 guarantee or 17% of sales, whichever is greater. Need truck or trailer access. Call Scott 208-284-9354

651 Help Wanted

WILBUR-ELLIS
Wilbur-Ellis has a few great opportunities to join our sales team! We are currently looking for Agriculture Sales Reps and Sales Trainees to join one of our teams in Adams, OR; Walla Walla, WA; Fairfield, WA and Pottlatch, ID. Must have the ability to build strong, lasting relationships and work independently. Ag experience preferred; sales experience a strong plus. Great company, pay and benefits. Apply online at: WilburEllis.com/Careers

651 Help Wanted

CREEKSIDE VALLEY FARMS
Spray Applicator: Hourly wage, DOE. Benefits. Supervisor role, spray crops. Blend chemicals. Manage inventory, operate farm equipment. Dayton, OR. Apply with resume to: carly@creeksidevalleyfarms.com

651 Help Wanted

CONFIDENTIAL SERVICE
If you respond to a "Blind Box" ad with a dept. (box) number, but you wish to protect your identity, follow this procedure: • Enclose your reply in an envelope. • Address the envelope to: CONFIDENTIAL SERVICE (TSR) Capital Press P.O. Box 2048 Salem, OR 97308 • Include a note, separate from your response, listing the firms you do not want to see your letter. • If the advertiser is one you've listed, your letter will be destroyed. 5219441-1

651 Help Wanted

NORTON CATTLE COMPANY
Truck Driving Position
2-3 days per week. Home every night. Approx 350-400 miles/per day. Livestock experience a plus, pulling a 48 Ft ground load gooseneck. Owner operators welcome. Based anywhere between Woodland, WA and Hermiston, OR.
Excellent Pay
Call: 541-475-6681
Email: nortoncattlecompany@gmail.com

664 Services

AGPROfessionals
DEVELOPERS OF AGRICULTURE
Everything from Ag to Z...
• Agricultural, Civil & Environmental Engineering
• Environmental & Agronomy Consulting
• Financial Planning & Construction Management
• Land Planning & Permitting
• Legislative, Public Relations & Community Outreach
• Real Estate Services & Site Selection
• Surveying & Geotechnical Testing
• Traffic Studies
• USR Permitting
• Zoning Changes

664 Services

Idaho Office—208.595.5301
195 River Vista Place #306 Twin Falls, ID 83301
Greeley Office—970.535.1938
3050 67th Ave., Suite 200 Greeley, CO 80634
www.agpros.com
5247383-1

651 Help Wanted

NOTICE
It is unlawful employment practice for any employer or employment agency to print or circulate or cause to be printed or circulated any statement, advertisement or publication, or to use any form of application for employment, or to make any inquiry in connection with prospective employment which expresses directly or indirectly any limitation, specifications, as to race, religion, color, sex, national origin, or by age between the ages of 18 and 65, or any intent to make only such limitation, specification or discrimination, unless based upon bona fide occupational qualification. 5219448-1

651 Help Wanted

BEST SELLERS "...Had great results and will definitely use Capital Press again."
Len St. Claire, Horseshoe Loop, Lebanon, OR
Call 1-800-882-6789 to advertise.

664 Services

Fence Installed With Hydraulic Post Driver: 503-859-2804
www.statewidedefence.net
New Zealand, non-climb horse, sheep & goat, field fence, barbed wire, deer and game fencing, rail fencing and gates. Serving Oregon Since 1993. CCB#93256

664 Services

SURFACE DRAINAGE SOLUTIONS
CUSTOM LANDFORMING & DITCHING
For surface water management. Scio, OR. arffarms@smt-net.com 503-932-4986
www.arffarms.wordpress.com
A&R FARMS, INC.
TRIPLE U LOGGING
Small Logging Services
Land clearing, brush piling. Free Estimates
Scio, OR. 971-225-8035

664 Services

BRENDEN LOG CO.
Land Clearing, Road Constr., Ripping, Ponds, Site Prep, Utilities, Bridges
503-843-2981
503-435-7098 cell
CCB#130229, Lic., Bonded, Insured
Sheridan, OR 238435-1

664 Services

VANDEBECK TRUCKING & EXCAVATING INC.
• Ponds, Reservoirs & Dam Construction • Land Clearing • Road Building • Site Prep • Land Leveling • Dump Trucking • Brush Removal
• All Phases Of Excavating
• LICENSED - BONDED - INSURED
CCB# 84747
(503) 871-8632
Mt. Angel, OR 238435-1

664 Services

NOTICE: Oregon Construction Contractors Law
(ORS 701) requires that all businesses that advertise remodeling, repair, home improvement or new construction be licensed with the Construction Contractors Board. An active license means the contractor is bonded and insured.
Verify a contractor's license and complaint history at www.hireallicensedcontractor.com 503-378-4621
5219444-1

664 Services

NOTICE: Oregon Landscape Contractors Law
(ORS 671) requires that all landscape contracting businesses be licensed with the Landscape Contractors Board. This four (4) digit number assures the business has a bond, insurance and an associated landscape contractor who has fulfilled the testing and experience requirements for licensure. For your protection, verify & check a license status on our web: www.lcb.state.or.us or call (503) 986-6561 before hiring a landscape business. Landscape Maintenance companies do not have to be licensed to perform maintenance functions on your already installed landscape. 5219445-1

LIME & DOLOMITE

WHEN YOU'RE READY TO LIME - WE'VE GOT IT READY FOR YOU!

- 8 High Flotation Applicators Ready
- 4 Orchard & Berry Applicators

Four Locations in the Willamette Valley

- 2 Locations in St. Paul
- 2 Broadacres Locations

Call Today for Prices & Volume Discounts.



Marion Ag Service, Inc.

45 Years Experience Hauling & Spreading
7746 St. Paul Hwy. • St. Paul, OR
1-800-648-2718
503-633-4561
www.marionag.com
support@marionag.com 5221156-1