

354 Auction Sales

Huge Estate Auction!
Sunday, June 13th
80824 Kik Rd, Hermiston, OR 97838
Auction: 11AM
Preview: 9AM
Following Auction: Thursday, June 17th.
Lots of electronics, tools, and Furniture. Must see items! Contact us for consignments and estate sales. Ford Bonney: 541-561-5798
Colby Alexander: 541-314-3153

Auction!

Saturday June 19th 6:30pm
80824 Kik Rd, Hermiston, OR 97838. Multiple estates. Lots of electronics, tools, and Furniture. Must see items!
Visit www.facebook.com/FordsAuction for photos. Contact us for consignments and estate sales.
Ford Bonney: 541-561-5798
Colby Alexander: 541-314-3153

525 Commercial Property

Processing Plant, Warehouse, Offices.
Property includes 5.14 Acres and 77,000sqft of buildings and office space. Hot pack processing line, warehouse, and offices. North of Salem, OR. Close to I-5. \$3,000,000
Email: farmforlease18@gmail.com

531 Real Estate Wanted

Wanted: farm/ farm-house pet friendly private RENTAL within 30 minutes of the 101, anywhere from Neskowin, OR. to Eureka, CA. 216-509-1662

546 Rentals, Leases

FOR RENT Bend, OR
For Rent 30 Irrigated Acres under pivot. Bend, OR. Long term/ short term. 1st year FREE with clean up. 503-330-8991

546 Rentals, Leases

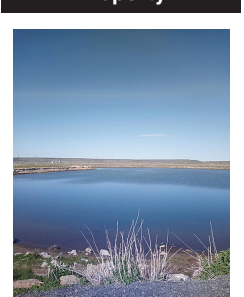
Large Warehouse for lease. 2 buildings 50x120, 20ft ceilings, 6000sqft each. Cement floors, 110 lighting. Gated area. \$3000 per month each. 4 month minimum. North of Brooks, Oregon. farmforlease18@gmail.com

561 Ranches

Income-Producing RANCH
LOWER CLEARWATER CANYON RANCH
Approximately 685 acres canyon range land above Clearwater and Pottlatch Rivers, east of Lewiston, Idaho via Cherry Lane Bridge. Good fall and spring cattle pasture. Stock water improvements. Home site with well and outbuildings; newer pole building, big old barn, good machine shed, shop with living quarters. Access by county road. **Two cell towers provide significant monthly income.** Whitetail, Mule Deer, Game Birds. Asking \$875,000. Send inquiries to: odieproperties@gmail.com

for RANCHES & FARMS call Crater Lake Realty, Inc.
Linda L. Long, Broker
541-891-5562
Chiloquin, OR
linda@craterlakerealtyinc.com • craterlakerealtyinc.com

540 Recreational Property



83 Acres 7 miles West of Burns, OR. 1884 water right on entire parcel. With 30 acres of Native Meadows. Water supplied from numerous year round ground springs & 5.5 acre spring fed pond stocked with bass & blue gill. Best duck & goose hunting area in Harney County. Year round gravel road to property. Excellent homesite overlooking creek. There is a domestic well & pumphouse. Plus 2 small outbuildings on property. Broker owned, \$390,000. Possible Owner Financing. Call for more details. 541-589-2068

FOR LEASE

Vegetable Processing Facility and 2 Storage Buildings Hermiston Oregon. Processing Facility approximately 58,000 sq. ft. with office, lunch room, receiving area, packing room, two large cold rooms, shop/parts room, staging room, shipping/ loading dock for three (3) trucks, scales); 2 Storage Facilities (30,000 sq. ft. facility with dehumidification; 60,000 sq. ft. facility with computerized refrigeration and dehumidifiers), private railroad spurs for transportation, water rights (well), septic, electricity, water lagoon for waste water. Will possibly rent processing facility and storage facilities separately. Contact Larry Blunck at 503-656-1654 or larry@bluncklaw.com

561 Ranches

CEDARVILLE, CA. HAY & CATTLE RANCH, 296+/- ACRES flood irrigated meadows, 1st water right, comfortable vintage home, barns, corrals \$1,420,000; **176+/- ACRES fenced spring grazing ground north of Davis Creek, CA.** with ponds & well \$175,000. Buy one or both. Call 530-250-7122

Looking For A Relaxed Off Grid Lifestyle? This Property Is A "Must See"! 2544 Deeded Acres with 283 Irrigated & 2260 BLM. Run 75 to 100 Head Of Cattle, Prior 18 Years Guest Ranch Sleeps 12, Hunt Trophy Mule Deer, 8 Ponds, Home, Shop, Barn, Stalls, Greenhouse, Hay Storage. 30 Miles From Lakeview, OR. \$2,200,000
RMLS #21237893
541-575-2617
www.dukewarnerrealestateoregon.com
ljh@ortelco.net

561 Ranches

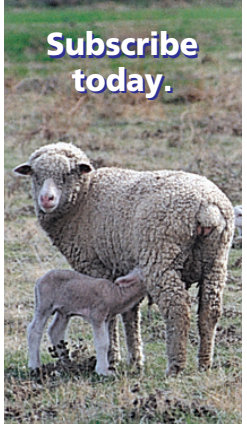
KNIFE LAND
Timbered Land - OR
Timbered land parcels in NE Oregon ranging in size from 795± to 9,772± acres, all with great hunting and recreation. \$1,140,000 - \$9,319,000
Cascade Timber Ranch NEW - ID
640± acres with meadows, timber, a creek, & ponds. \$5,350,000. Or purchase 320± acres \$2,970,000.
Carey Farm - New - ID
30± air miles south of Sun Valley. 436± acres has 250± acres irrigated by 5 pivots and 3 wheel lines, & 1,288± sf home. Zoned for 1 home per acre, or 1 home per 10 acres. May work well to develop. BTVAD \$3,500,000
208.345.3163 knipeland.com

IDAHO RANCHES & FARMS WE SPECIALIZE IN TAX-DEFERRED EXCHANGES

Bob Jones, Broker
208-308-6060
Mark Jones, Assoc. Broker
208-308-3030
208-733-0404
1766 Addison Avenue E, Twin Falls, ID 83301
www.RJREALTY.com

CAPITAL PRESS LINE CLASSIFIEDS CALL TOLL-FREE: 1-800-882-6789 / OR ONLINE 24/7/365 CapitalPress.com

Print and online Ag News for ranchers, farmers, vintners, nursery people and more!



Subscribe today.
Capital Press
1-800-781-3214
Fax 503-370-4383
CapitalPress.com

Access Capital Press 24/7-365

Stay up to date on the latest agricultural and natural resources news.

ANYTIME ANYWHERE

- 1 year \$55
- 2 years \$100
- EZ Pay \$4/month



Capital Press
1-800-781-3214
CapitalPress.com

PUBLISHER'S NOTICE

All real estate advertising in this newspaper is subject to the Fair Housing Act which makes it illegal to advertise "any preference, limitation or discrimination based on race, color, religion, sex, handicap, familial status or national origin, or any intention to make any such preference, limitation or discrimination." Familial status includes children under the age of 18 living with parents or legal custodians, pregnant women and people securing custody of children under 18. This newspaper will not knowingly accept any advertising for real estate which is in violation of the law. Our readers are hereby informed that all dwellings advertised in this newspaper are available on an equal opportunity basis. To complain of discrimination call HUD toll-free at 1-800-669-9777. The toll-free number for the hearing impaired is 1-800-927-9275.



IT'S SO EASY TO PLACE CAPITAL PRESS CLASSIFIED ADS... PHONE TOLL FREE 1-800-882-6789

The West's BEST Ag News!
- newspaper
- e-paper
- facebook
- twitter
- web
CapitalPress.com

FAY RANCHES
Water, Water, Water: 1,328 acres deeded, 408 acs water rights under Unity Reservoir at Hereford. 185 cow USFS permit June 1 to Oct. 15. 3/2 house, new pipe corrals with Silencer chute, good shop. Run some cows inside. Great irrigation water. Flood, gated pipe and wheel lines. Wild meadows and alfalfa. Good, compact, productive ranch. Price: \$2,640,000.00
Ken Bentz / Broker • kbentz@fayranches.com
541-647-0657 www.fayranches.com Licensed in OR, NV

Opportunity is KNOCKING! 114 acres in the beautiful recreational area of Summer Lake! Situated just minutes from Ana Reservoir. Fishing, hunting, sand dunes, trails and golf all within a short drive. Potential to subdivide into small acreage homesites. Don't let this opportunity pass you by!
Teri McKenzie, Licensed Realtor
Email: terimckenzie@4msllc.com
Website: terimckenzierealestate.com

DECKER'S DEALS!
Everett Decker, Licensed Realtor
John L. Scott-Redmond, OR
541-548-1712 or 541-480-8185
email: everettd@johnlscott.com

120 ACRES OF RECREATIONAL PROPERTY near Brothers, OR. Zoned EFU. 3 separate 40 Acre parcels. Will sell one or all 3. \$70,000.

NEW LISTING: Small Livestock Property. 380 Poplar St. in Madras. 89.08 Acres with 60.6 Acres of NUID water rights. An older home that has had a lot of work done. 3 bed-1bath, garage and an older barn. \$650,000.

80 ACRES OF EFU ZONED LAND IN CHRISTMAS VALLEY. Power on one side. Good well area. \$53,000.

FarmSeller FARMSELLER.COM Find the land, farms, and ranches you're looking for

DIRECTORY OF PREMIUM AGENCY MEMBERS

 Brook Havens Cascade Sotheby's International Realty 541-604-0788	 Patty Cordoni Cascade Sotheby's International Realty 541-771-0931	 Pam Mayo-Phillips Cascade Sotheby's International Realty 541-480-1513	 Linda Long Crater Lake Realty Chiloquin, OR 541-783-2759	 Jerry Franklin Eastern Oregon Realty John Day, OR 541-575-2121
 Tim Cobb Farmland Company Spokane, WA 509-624-4408	 Robert Bacon Fischer Nicholso Realty Klamath, OR 541-545-1510	 Stacey Moyles Century 21 Showcase Realtors, Inc. Klamath Falls, OR 541-882-2121	 Lisa Johnson Horsepower Real Estate Junction City, OR 541-510-4601	
 John Lee Lee Real Estate Aumsville, OR 503-245-9090	 Paul Terjeson Oregon Farm Brokers Corvallis, OR 503-999-6777	 Jason Nash Keller Williams Realty Southern Oregon 541-591-5195	 Steve Helms Keller Williams Farm & Ranch Albany, OR 541-979-0118	 Curtis Hitchcock Knife Land Company Boise, ID 208-866-2825
 Janey Knipe Knife Land Company Boise, ID 208-345-3163	 John Knipe Knife Land Company Boise, ID 208-345-3163	 Tom Gill Knife Land Company Mountain Home, ID 208-860-0776	 Julie Mansfield-Smith Mossy Oak Properties Copper Creek Land Co. Kimberly, OR 541-519-6891	 Jake Polvi POLVI Bend, OR 541-410-3050
 John Collins Ranch-N-Home Realty La Grande, OR 541-963-5450	 Judy Willis Real Estate Associates Joseph, OR 541-432-4060	 Ken Wick Real Estate Associates Joseph, OR 541-432-4060	 Mark Jones Robert Jones Realty Twin Falls, ID 208-733-0404	 Kirk Makin Ruby Peak Realty Joseph, OR 541-432-3131
 Claessee O'Connor Timberline Realty Joseph, OR 541-432-1234	 Jim Whitney Whitney Land Company Pendleton, OR 541-278-4444	 Todd Longgood Whitney Land Company Pendleton, OR 541-278-4444	 Robert Carnahan Artisan Real Estate Associates Dufur, OR 503-313-0419	

- CALIFORNIA**
HOLLISTER SAN BENITO REALTY 831-637-5563
- IDAHO**
BOISE KNIFE LAND 208-345-3163
POCATELLO INTERMOUNTAIN LAND EXCHANGE, INC. 208-232-8306
STAR FLINDERS REALTY & EXCHANGE 208-334-3840
TWIN FALLS ROBERT JONES REALTY INC. 208-733-0404
- MONTANA**
BILLINGS ROCKY MTN. RANCH REAL ESTATE 406-259-6666
MISSOULA STELLING RANCH & LAND 406-728-9200
- NEVADA**
FALLON BERNEY REALTY LTD. 775-426-8023
- OREGON**
ALBANY KELLER WILLIAMS FARM & RANCH 541-979-0118
AUMSVILLE LEE REAL ESTATE 503-245-9090
BAKER CITY AGRILANDS REAL ESTATE 541-853-1212
INTERMOUNTAIN REALTY 541-523-4434
BEND CASCADE SOTHEBY'S INTERNATIONAL REALTY (PAM MAYO AND BROOK HAVENS) 541-923-1376
CASCADE SOTHEBY'S INTERNATIONAL REALTY (PATTY CORDONI) 541-771-0931
COLDWELL BANKER BAIN 541-280-4372
FAY RANCHES 541-419-0770
POLVI 541-410-3050
BONANZA FISHER NICHOLSON REALTY, LLC 541-545-1510
BURNS JETT BLACKBURN REAL ESTATE 541-573-7206
CHILOQUIN CRATER LAKE REALTY 541-783-2759
CORVALLIS OREGON FARM BROKERS 503-999-6777
DAYVILLE DUKE WARNER REALTY 541-987-2363
DUFUR ARTISAN REAL ESTATE ASSOCIATES 503-313-0419
JOHN DAY EASTERN OREGON REALTY 541-575-2121
JOSEPH REAL ESTATE ASSOCIATES 541-432-4060
TIMBERLINE REALTY 541-432-1234
RUBY PEAK REALTY 541-432-3131
JUNCTION CITY HORSEPOWER REAL ESTATE 541-510-4601
KIMBERLY MOSSY OAK PROPERTIES CUPPER CREEK LAND CO. 541-519-6891
KLAMATH FALLS KELLER WILLIAMS REALTY SOUTHERN OR 541-591-5195
CENTURY 21 SHOWCASE REALTORS, INC. 541-882-2121
LA GRANDE RANCH-N-HOME REALTY 541-963-5450
LAKEVIEW HIGH COUNTRY REAL ESTATE 541-417-0250
MEDICAL SPRINGS AGRILANDS REAL ESTATE 541-853-1212
NORTH BEND CADWELL REALTY GROUP 541-740-9854
RE/MAX SOUTH COAST 541-290-1850
ONTARIO TOM PHILLIPS AGENCY 541-889-8401
PENDLETON WHITNEY LAND CO. 541-278-4444
SALEM AGRI-BUSINESS REAL ESTATE 503-371-6409
SILVERTON HARCOURTS NW OREGON REALTY GROUP 503-873-8600
WILSONVILLE WOLF PROPERTIES NW 503-682-1789
- TEXAS**
DIMMITT SCOTT LAND CO. 800-933-9698
- WASHINGTON**
BURLINGTON RE/MAX TERRITORY NW 360-755-9494
CHEHALIS CENTURY 21 LUND REALTORS 360-748-8619
SPOKANE FARMLAND COMPANY 509-624-4408
TOLEDO RE/MAX PREMIER GROUP 360-520-4810