

354 Auction Sales

354 Auction Sales

354 Auction Sales

354 Auction Sales

354 Auction Sales

540 Recreational Property

546 Rentals, Leases

546 Rentals, Leases

## ONLINE AUCTION

B.E. GIOVANNETTI & SONS  
HALF MOON FRUIT AND PRODUCE  
HAVE SOLD THEIR RANCHES  
LIVE OAK, CA  
JUNE 25TH - JUNE 29TH 2021



LEARN MORE AT AUCTION-IS-ACTION.COM

**PUTMAN AUCTIONEERS, INC.**  
CA BOND NO. 7238559  
EMAIL: putman.kevin@yahoo.com

KEVIN PUTMAN (530) 566-5083  
JOHN PUTMAN (530) 701-8596

## Our readers get the best dirt.



CapitalPress.com  
800-882-6789

We deliver your message to the West's ag audience, wherever they are.

- Newspaper
- E-Editions
- Mobile
- Websites
- Flyers
- Custom Publications

Call us today and see how we can help your business grow.

**Capital Press**  
800-882-6789  
CapitalPress.com

354 Auction Sales

354 Auction Sales

354 Auction Sales

## UNRESERVED - COMPLETE LIQUIDATION of the ESTATE - EVERYTHING MUST GO public auction

**Jon Southwick Estate**

Heavy Truck Mechanic and Avid Car and Antiques Collector for Over 60 Years

**ONLINE ONLY - INTERNET AUCTION**

Bidding OPEN NOW - Lots Begin to CLOSE

**June 23rd 1:00PM PST**

516 Garnet Ln. Grants Pass OR, 97526 - Just 9 miles west of I-5



Onsite Item Preview Available by APPOINTMENT ONLY - June 17-22nd

Download our FREE Smartphone App and BID from your Phone or Tablet

Standard 10% Buyers Premium Applies to All Purchases

Terms are Cash, Wire Transfers, Credit Cards or Pre-Approved Checks

**PACIFIC INDUSTRIAL AUCTIONS**  
and APPRAISALS

Office 541-505-7233

Jake Cheechov CAI, GPPA  
Call 541-913-7455  
jake@PIAuctioneers.com

**PIAuctioneers.com**

## Grover Construction Estate Auction

Thursday, June 24, 2021

10:00 MDT

671 East 1275 North, Shelley, Idaho

Live bidding in conjunction with online bidding. Terms: Cash, card or bankable check day of sale. Payment required in full within 48 hours after auction. All items "as is", no warranty.

For a complete list & pictures go to: [www.bigmountainauctions.com](http://www.bigmountainauctions.com)

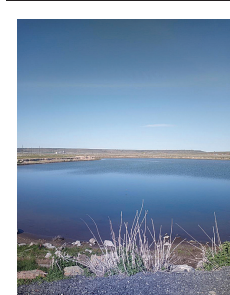
**TRACTORS - LOADER - GRADER - CRAWLERS - DRAG LINE  
GRADE ROLLER - BLADE - SCRAPERS - HORSE BARN - RAIL CARS  
STORAGE - SPOOLS OF CABLE - SUBMERSIBLE PUMPS TRUCKS  
- TRAILERS - FARM EQUIPMENT - SHOP TOOLS**



**BIG MOUNTAIN AUCTIONS**

**Keith Couch**  
Owner/ Auctioneer  
208-431-9300

[www.bigmountainauctions.com](http://www.bigmountainauctions.com)



**83 Acres 7 miles West of Burns, OR.** 1884 water right on entire parcel. With 30 acres of Native Meadows. Water supplied from numerous year round ground springs & 5.5 acre spring fed pond stocked with bass & blue gill. Best duck & goose hunting area in Harney County. Year round gravel road to property. Excellent homesite overlooking creek. There is a domestic well & pump house. Plus 2 small outbuildings on property. Broker owned, \$390,000. Possible Owner Financing. Call for more details. 541-589-2068

**High Value Farm Land**  
For lease: 50 acres, class 1 soils, good well with water rights, easy access to highway. Stayton, OR. area. 503-875-0035

**FOR RENT Bend, OR**

For Rent 30 Irrigated Acres under pivot. Bend, OR. Long term/ short term. 1st year FREE with clean up. 503-330-8991

**Check Out our line ads @ CapitalPress.com**  
Call in your classified ads by Wednesday:  
10:00 .... Display Ad  
Noon ..... Line Ad  
1-800-882-6789

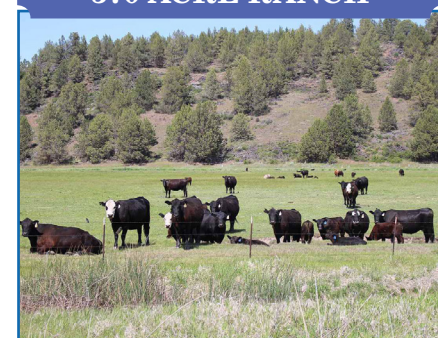
**FOR LEASE Vegetable Processing Facility and 2 Storage Buildings** Hermiston Oregon. Processing Facility approximately 58,000 sq. ft. with office, lunch room, receiving area, packing room, two large cold rooms, shop/parts room, staging room, shipping/ loading dock for three (3) trucks, scales); 2 Storage Facilities (30,000 sq. ft. facility with dehumidification; 60,000 sq. ft. facility with computerized refrigeration and dehumidifiers), private railroad spurs for transportation, water rights (well), septic, electricity, water lagoon for waste water. Will possibly rent processing facility and storage facilities separately. Contact Larry Blunck at 503-656-1654 or larry@bluncklaw.com

**Large Warehouse** for lease. 2 buildings 50x120, 20ft ceilings, 6000sqft each. Cement floors, 110 lighting. Gated area. \$3000 per month each. 4 month minimum. North of Brooks, Oregon. farmforlease18@gmail.com

561 Ranches

561 Ranches

## 570 ACRE RANCH



**A Versatile 570 Acre Ranch:** Unique and Beautiful property borders the Running Y Resort in Klamath Falls, OR. Has 250 acres of irrigation water rights from the lake, 5.9 acres zoned commercial, approx. 300 acres of (vs pf) marketable timber. Corrals, Loading chute, Stock wells. Capable of running 150 pair seasonally. \$1,850,000  
MLS #220102059

craterlakerealty.com

**Linda L. Long, Broker**  
541-891-5562  
**Andra Campbell**  
541-281-2180

Chiloquin, Oregon  
linda@craterlakerealtyinc.com • craterlakerealtyinc.com

## PUBLISHER'S NOTICE

All real estate advertising in this newspaper is subject to the Fair Housing Act which makes it illegal to advertise "any preference, limitation or discrimination based on race, color, religion, sex, handicap, familial status or national origin, or any intention to make any such preference, limitation or discrimination." Familial status includes children under the age of 18 living with parents or legal custodians, pregnant women and people securing custody of children under 18. This newspaper will not knowingly accept any advertising for real estate which is in violation of the law. Our readers are hereby informed that all dwellings advertised in this newspaper are available on an equal opportunity basis. To complain of discrimination call HUD toll-free at 1-800-669-9777. The toll-free number for the hearing impaired is 1-800-927-9275.



5219450-1

354 Auction Sales

354 Auction Sales

354 Auction Sales

## BigIron Weekly Online Auctions

AUCTIONS Unreserved | No Buyer Fees | Lien-Free

<b>CLOSING BEGINS JUNE 23rd 10 AM</b>		2007 CLAAS 900 T3 Speedstar Forage Harvester
<b>CLOSING BEGINS JUNE 23rd 10 AM</b>		Rock Bottom Custom Jerome, ID
<b>CLOSING BEGINS JUNE 23rd 10 AM</b>		1999 New Holland TC33D 4X4 MFWD Loader Tractor
<b>CLOSING BEGINS JUNE 23rd 10 AM</b>		2003 CLAAS Jaguar 900 Forage Harvester

Mike Dugan Gooding, ID

**Got Equipment to Sell?**  
(800) 937-3558 | [www.bigiron.com](http://www.bigiron.com)

561 Ranches

561 Ranches

561 Ranches

**FBR Fort Benton Realty**

**BOLD FARM - Montana Farm Investment**

9,200 Acres: Located in central Montana, N of Lewistown. Includes 7,200 acres of cropland, two homes & two sets of farm buildings with 1/3 million bushels grain storage and a 4,000-head feedlot capacity. Local cropping practices include winter & spring wheat, barley and pulse crops. Irrigation rights and development are possible. There are elk, deer, antelope & pheasant hunting on this farm, and fishing in this area. Enjoys income and modest Return On Investment with Hunting privileges as a significant Montana Land Owner. Water District provides 120,000 gallons of water annually, and more water could be available. Near Glacier National Park. Good hunting and fishing nearby in Bob Marshall Wilderness, the Marias River, and Tiber Reservoir. \$499,500.

[https://www.youtube.com/watch?v=jig8IT\\_fFu8I&feature=youtu.be](https://www.youtube.com/watch?v=jig8IT_fFu8I&feature=youtu.be)

**OEHLKE Farm/Ranch & Home & Gardens**

19 Acres with 14 acres cropland located 20 miles East of Conrad, MT. Includes nice 4-bedroom home and good set of farm buildings with shop, storage/barn building, and grain/feed storage. Large garden areas and tall mature trees around buildings. Water storage for agricultural, livestock and garden use. Water District provides 120,000 gallons of water annually, and more water could be available. Near Glacier National Park. Good hunting and fishing nearby in Bob Marshall Wilderness, the Marias River, and Tiber Reservoir. \$499,500.

Fort Benton Realty, LLC is proud to represent properties that offer the BEST of Montana's Big Sky Country including Residential, Commercial, Homes with Acreage, Recreational type properties, and our specialty is Farm & Ranch Properties!

Call Broker Mark Pyrak @ 406-788-9280 | [www.fbrealty.com](http://www.fbrealty.com)

## Have property for sale?

## Looking to buy some?

FarmSeller.com is America's farm and ranch database.



5248706-1

5248943-1