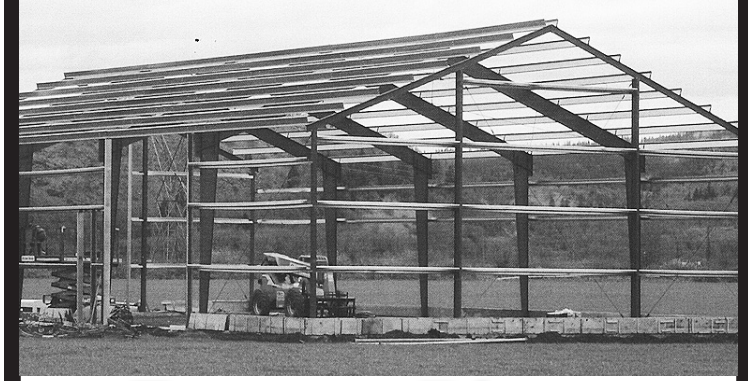


# KAISER STEEL BUILDINGS, LLC



**Factory Direct Metal Building Kits**  
 Since 1963 • F.O.B. our plant, Eugene, OR

**KAISER STEEL BUILDINGS, LLC**  
 For information call or write  
**(541) 688-0141**  
 30025 Kaiser Ave., Eugene, OR 97402  
 WWW.KSBUILDINGSLLC.COM

**ADVERTISE IN CAPITAL PRESS**  
 DISPLAY AD DEADLINE IS 10:00 AM WEDNESDAY.  
 CLASSIFIED LINE AD DEADLINE IS NOON WEDNESDAY.  
**GIVE US A CALL!**  
 TOLL FREE 1-800-882-6789  
 or go ONLINE 24/7/365  
 capitalpress.com

# WE COVER A LOT OF GROUND!

Let us deliver your message to the West's Ag Audience, wherever they are.

- Newspaper
- E-Editions
- Mobile
- Websites
- Flyers
- Custom Publications

**TRY 3 FREE ISSUES!**

**Capital Press**  
 EMPOWERING PRODUCERS OF FOOD & FIBER  
 1-800-882-6789  
 CapitalPress.com

Call us today to see how we can help your business grow.

**Capital Press**  
 EMPOWERING PRODUCERS OF FOOD & FIBER

**800-882-6789**  
 CapitalPress.com

### 807 Fuel, Heating & Firewood

Large Quantities Fir, Oak and Maple Logs for commercial firewood operator. Some down 1 year. Available all year and for multiple years. South Salem and East of Corvallis, OR. 503-838-3779

### 821 Christmas Trees



6' to 7' Nobles. Lots available. Minimum order of 250, \$30/ each. **OR Buy the entire field** of approximately 8000 trees. Colton, OR. Call Randy for details: 503-314-0145



We have 2 Holland Mechanical Transplanters. We use them to plant Christmas tree seedlings, \$2000 for each. Salem, OR. 503-587-9543



Howey Baler and Shaker, good condition, \$1000. Rickreall, OR. 503-551-4638

**Capital Press**  
 WATER PUZZLE  
 Pipelines: complex mitigation plan would bring Columbia River water to farmland  
 Confirmed wolf attacks on double in W...  
 Record year makes Oregon top blueberry...

**We Cover More of the Ag News You Want!**

- State & Federal Laws
- Regulations
- Breaking News
- Varieties of Crops
- Conservation Issues
- Politics

**Capital Press**  
 EMPOWERING PRODUCERS OF FOOD & FIBER  
 1-800-882-6789  
 CapitalPress.com

### 822 Nursey Stock - Plants

**Oregon Olive Trees**  
 Selected Varieties for Northwest Growers. 2.4 Liter and 2 gallon sizes. By appointment. Dallas, Oregon  
 www.oregonolivetree.com



Hazelnut Trees: McDonald, Jefferson, Yamhill, Wepster, York, Eta, Theta, Felix. Dayton, OR. 503-864-4422

**HAZELNUT TREES ALLUVIAL ACRES NURSERY**  
 Polly-O, Yamhill, McDonald, Wepster, Jefferson, Pollenizers.  
**Scio, OR 503-508-4684**

**Hazelnut Trees:** Sacajawea, Doris, 5 years old, \$6-\$8.  
**Blueberries:** Duke, Legacy: 4 year old plants, \$2.50 each. Crabtree, OR. 503-871-9114

### 822 Nursey Stock - Plants

**EMERALD GREEN ARBORVITAE:** rooted cuttings and 2-1/4", liners available. Forest Grove, OR. Call 503-359-7540

**823 Bees**  
 FREE good quality 8-Frame bee equipment. Southern Oregon 541-846-7198

**824 Seed**  
**ALFALFA SEED:** VER-NEMA: Raw Seed: \$1.85/ lb. Inoculated: \$1.90/ lb. WSDA Certified, 2020 production. VNS: Raw Seed: \$1.75/ lb. All good winter hardiness/ 95% germ. msbuckleyfarms.com Walla Walla, WA. 509-200-1183

**Quality VNS Alfalfa Seed:** \$2.00/ lb. Touchet, WA. Chris Kregger 509-394-2400  
 Pasture Seed \$1.20/ lb. Lawn Seed \$1.20/ lb. Wheat Straw \$120/ ton. Grass Hay \$180/ ton. Wheat \$6/ bag. Rickreall, OR. 503-623-6922

### 805 Farm Buildings

**KNW KROES NORTHWEST**  
 SINCE 1980

*With 40+ years of design/build experience in the ag industry, our knowledgeable staff will work with you to come up with solutions that will help you achieve your goals.*

- AG CONSTRUCTION
- EXCAVATION
- CONCRETE WORK
- STEEL & POLE BUILDING
- 3D RENDERING - 'see' your project first before breaking ground

CONTACT US TODAY TO GET STARTED  
 503-831-9770 | KNW-INC.COM

### 821 Christmas Trees

**Your ad here!**  
 Call 800-882-6789

**AGPS CHOP REGAL HAUL ROPE EVITA ALTO ERRS MELON BETWEEN YOU AND ME VPS TIS MEDLEY SHUN DNA ALIEN PEER ARAB DONT TELL ANYBODY APES LOLL ELVIS MED SITS PAYERS MPH GRR FORYOUREYESONLY IRANI OURS BEAM RENAL TROT ERIC MOTHS SOSO YODA**

### 822 Nursey Stock - Plants

**Last Call**

Plan Ahead To Be Late.

**FALL CREEK FARM & NURSERY, INC.**  
 1.800.538.3001 | www.fallcreeknursery.com

### 824 Seed

### 824 Seed

Summer COVER CROPS Piper Sudan, Cowpeas, Buckwheat. Albany, OR. Text/ Call: 541-905-2111

### 825 Fertilizer & Soil Amendments

**POTENTGROW**  
 Organic Fertilizer

- Bulk Chicken Manure
- Bulk Chicken Litter
- Delivery Services

For pricing and freight quotes call 541-926-1829 or e-mail: paulh@potentgrow.com

### 826 Organic

900 Bales of Organic Haylage: good quality, \$55/ bale. Scio, OR. 503-932-1005

### 828 Misc for Sale

Open top 55 gallon metal drums. Food grade, \$20 each OBO. Cornelius, OR. Jeff 503-341-4289



Steiger Series 3 St325 with 3406B @ 425 horse power. Approx 10,000 hours on tractor, 4500 hours on engine finals & transmission. New uni-balls 1000 hours ago. New brake calipers & pads 600 hours ago. 2 hydraulic pumps, 34 gal/min & 16 gal/min. Tires are 800/50/34 @ 75%, \$15,000. Rockford, WA. 509-953-6956

### 869 Livestock Equip. & Supplies

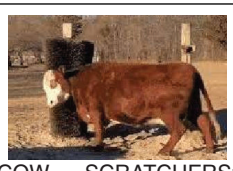
Rice Lake 15,000lb livestock scale. Portable, solar powered. LIKE NEW. Used for 2 cattle loads only. Retail \$24,000. Asking: \$19,000. Burns, OR. 541-589-0872



Cattle Squeeze Chute, \$500. Valley, WA. 509-993-4128

**Feed Mixer**  
 Diamond Ind. 670-T vertical, twin screw feed mixer. New spare tire included. Chiloquin, OR. 509-961-9693

**Bale Barn Horse Feeders in Stock:** NW Farm Supply, Hermiston, OR. 800-801-5650 or Mike 541-561-6047



**COW SCRATCHERS:** CALL NOW TO ORDER YOURS. LIMITED STOCK. PRICES ARE: 1-\$145 EACH 2-\$135 EACH 3+\$125 EACH THESE ARE 4 FOOT TALL ABOUT 2FT WIDE 8.5 INCH. HOLE FOR YOUR POST TO SLIDE THROUGH. Turner, OR. 503-999-6013



**New IA Portable Hay Feeder:**  
 • 8 hole wheels  
 • Swing up tongue  
 • Inner bunk  
 • 35 stations  
 \$4,995  
 2 or more \$4,795 each.  
 Bend, OR. 541-548-7185  
 mtcsales.net

For Sale: Self catching head gate. Washougal, WA. 360-835-5329

**Livestock Panels:** 16' (6) rail, (3) brace, \$128 each. 12' panels, (6) rail, (2) brace, \$96. Bow gates, all lengths and sizes. These panels are new Green color, hundreds available. **Heavy 16' Feeder Panels,** \$360 each. La Grande, OR. 541-805-9279, 541-963-6258

Wade Rain 1/4 mile-Wheel Lines. Some 5 foot wheels & some 7 foot wheels. Forest Grove, OR. 503-310-2524

Heinsman 2230 soft hose traveler, \$2000. Cornelius, OR. 503-680-5436

Poly Tank: 500 gallon, never outside, \$400. Caldwell, ID. 209-712-6336

350- 3"x40' hand lines, 3ft and 4ft risers. \$75/ each. Prineville, OR. 541-480-9356

**Cows are Sold!**  
 All milking equipment for sale. Westfalia milk meters. DeLaval vacuum pump, variable speed. 6000 gallon Dari-Kool Milk Tank. (2) 5HP compressors, (2) condensers, Enumclaw, WA. 253-740-2072

**Kiln Dried Shavings:** Smaller truck loads now available. Hogfuel also available. Call for details. Forest Grove, OR. 503-849-0216

### 872 Dairy Eq. & Supplies

**SHP Universal compressor. 3HP vacuum pump. 1 Universal whey jar, 6 Universal wash in place, 6 milker claws, Beaumatic claws with Universal shells and inflation, double 3 Herringbone parlor with feeders.** Sandpoint, ID. 208-290-0151

### 875 Tanks & Storage

**FUEL TANKS:** Used single wall tanks 1500 & 2000 gallons. New 1000, 2000, 3000 and 4000, etc. gallon double walled tanks. Salem, OR. Peter 503-881-9803

### 878 Generators

**GENERATORS:** Used, low hour takeouts, 20KW to 2000KW, diesel, propane, & natural gas. Cooperstown, ND. We ship nationwide. 701-371-9526 or 701-367-4305  
 abrahamindustrial.com



250 KW Genset. CAT Diesel. Very low hours. Like new condition. 120-480 Volt. 1 and 3 phase. Skid mount. Ready to install and put to work, \$13,900. Located in Twin Falls ID. 208-613-0050

**Baldor Genset 100KW, 120/240 volt.** Open skids, JD engine, 34.8 hours, excellent, \$9850 OBO. 360-921-0322

### 881 Shop Equip. & Tools

Late Model Kobelco Wheel Loader with Tink bucket LK600A, \$35,000. Puyallup, WA. 253-677-7007

### 887 Irrigation Equip.

Wade Rain 4"x30' main line: knob and loop, couplers and valves, \$45/ per joint. Goldendale, WA. 509-773-3925

(2) 75hp irrigation pumps. GE motors 230/480v currently wired for 480v. Cornell 4y75-2 pumps. Used 1 season since pumps and motors were gone through, \$6000 each/ OBO. Aumsville, OR. 503-551-5396

**Pivots: All brands.** No rust. Plus buried wire. Call Keizer, OR. Cell 503-881-3232

**Burkeley Turbin Well Pump:** 120ft 5" column, 13 stage pumping bowls, \$1000. Aurora, OR. 503-710-7372

30 pieces 3"x40' Moore Rain with sprinklers, \$2/ foot OBO. 6"x30' Wade Rain Main line: 100 pieces, sold/ foot. Cornelius, OR. Call Jeff 503-341-4289

**WHEEL LINES FOR SALE** 5' wheels x 1,800'. Levelers, sprinklers, travelers, 4 with working motors, \$6,000 each. 1 with non-working motor, \$4,000. Fields, OR. 503-799-2677

**REFURBISHED PUMPS AT A FRACTION OF THE COST OF NEW.** (6) Cornell Marathon Electric, 15 to 75hp, 1760-3500 RPM's; (3) Berkeley Baldor Industrial Motor, 7.5 to 15hp, 3450 RPM's. Meridian, ID. 208-888-1376



**NEW IA Pivot Track Closer.** Heavy Duty with adjustable cone discs. From 60" to 12" closing width. Hydraulic Depth Control water fill roller packer, \$5,495. Bend, OR. 541-548-7185  
 mtcsales.net

For Sale: 3/4 hp 10 gallon per minute. Single phase 230v Franklin pump. 100' deep, set schedule 120 pipe, 100' #12 sub flat cable. Went up in hp, in well 13 months, \$1,000. Woodburn, OR. 503-339-5532

**Boost Your Yields!**  
 With Wagner Seed

We are your full-service seed cleaning and processing plant. Top-quality, weed-free seed! Wheat, triticale and other seed products to raise or contract. We also facilitate seed research.

**YS-603:** (SWS) Awned - Tolerant to foot rot. Good falling numbers, good protein. For dryland or irrigated.  
**YS-801:** (HRS) Awned - Good test weight, good protein. Best performance under irrigation.  
**YS-802:** (HRS) Awned - Good test weight, good protein. Dryland or irrigated.  
**YS-5001:** (Triticale) Awnless - Good forage quality, good grain yields, good protein.

Now selling Sureflex Conventional Van varieties!

**WAGNER SEED**  
 (509) 349-8094 WagnerSeedCo.com  
 20600 Rd 1 SE • Warden, WA 98857 • 1 mile off exit 188, I-90