

896 Forklifts



2017 Yale: 360K capacity. New rubber. 10K hours. 8ft. forks. Hydraulic fork positioners. Side shift, 183" upright 2 stage mast. Cummins 5.9 AC, full cab, \$85,000. Gaston, OR. 503-789-3726

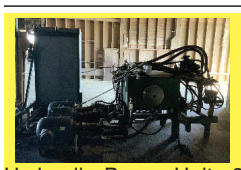
899 Heavy & Indust. Eq.

REPLACEMENT DECAL SETS

Construction, Forestry & Ag Equipment. Fast, Knowledgeable, Reliable Service. 215-536-5339 email: info@CustomServicesCompany.com Thousands of sets, Old & New, in our digital inventory. www.QuipCal.com



1999 John Deere 410E Backhoe: 2900 hours, hay fork. Good condition, \$22,000. Juntura, OR. 541-604-5187



Hydraulic Power Unit 3 phase electric motor. Driven pumps with manifold and valves. Self contained on skid with power panel, additional new pumps and motors and valves to go with. Salem, OR. 503-910-4010; Westernag@msn.com



Jaw Crusher Plant 32"x42". With a separate 32"x42' apron feeder. Both are portable with heavy duty hydraulic legs. Good tires, \$150,000. Oregon. 541-954-4808



2000 Kobelco SK200LC Excavator, Hydraulic Thumb, Cummins 6 cylinder Diesel, 42" Bucket, \$42,500. Sandy, OR. Call Pepe: 503-544-3232; Call Pat: 503-407-9062



Linkbelt 2700 Quantum Excavator, Hydraulic Thumb, Dig Bucket, Guarded Cab, Wedge, 9730 Hours, Asking \$34,950. Sandy, OR. Call Pepe: 503-544-3232; Call Pat: 503-407-9062

"Thanks! Very effective ad!" William Krieg - Portland, Ore. Call 1-800-882-6789 to advertise.

QUALITY USED EQUIPMENT & ATTACHMENTS

2000 Case 580SL - \$32,000
FEATURES:
• 4,313 Hours
• 12" Bucket
• Standard Front Bucket
SPECIFICATIONS:
• Operating Weight: 15,000#
• HP: 86

1998 John Deere 4200 - \$16,500
FEATURES:
• 747 Hours
• Gannon Box with Rippers
• Front Loader
SPECIFICATIONS:
• Operating Weight: 5600#
• HP: 26

Call Cameron Noble or Eric Hunt, CENTRAL POINT, OR 855-423-1200 www.amtractor.com

902 Farm Equip. Parts

Nyssa Tractor & Implement
Our yard has 5 miles of road, the rest is farm machinery & parts.
www.nyssatractor.com
Toll Free (833) 372-4020
Nyssa, OR

BIG TRACTOR PARTS, INC.
~ GEARED FOR THE FUTURE ~
STEIGER TRACTOR SPECIALIST

- 1. We are your source for new & used Steiger drivetrain parts Series 1-9300 Series.
- 2. We rebuild Steiger transmissions, Fuji power shift transmissions, dropboxes & axle with ONE YEAR WARRANTY!
- 3. We now rebuild computer control boxes for Steiger tractors 1982-1999.

800-982-1769
www.bigtractorparts.com

899 Heavy & Indust. Eq.



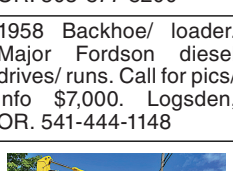
1991 CAT 950F Wheel Loader, 4 Yard Bucket, 14,340 Hours, Runs Great, \$39,500. Sherwood, OR. 503-260-0303



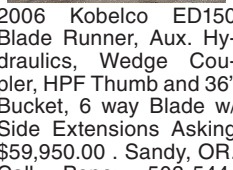
2012 T-190 Bobcat Compact Track Loader: serviced, 584 hours, enclosed cab, heat, A/C, foot controls, 2 buckets. Great shape, \$60,000. Junction City, OR. 503-877-8200



2014 Genie Manlift Z-45/25J IC: 4WD, 157 hours, Deutz diesel. Excellent condition, \$70,000. Junction City, OR. 503-877-8200



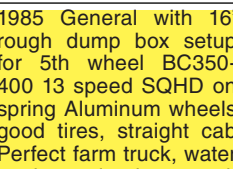
1958 Backhoe/ loader. Major Fordson diesel drives/ runs. Call for pics/ info \$7,000. Logsdon, OR. 541-444-1148



2006 Kobelco ED150 Blade Runner, Aux. Hydraulics, Wedge Coupler, HPF Thumb and 36" Bucket, 6 way Blade w/ Side Extensions Asking \$59,950.00. Sandy, OR. Call Pepe: 503-544-3232; Call Pat: 503-407-9062



John Deere 590D, Auxiliary Hydraulics, Hydraulic Thumb, Hydraulic Coupler, Dig Bucket, \$34,950. Sandy, OR. Call Pepe: 503-544-3232; Call Pat: 503-407-9062



1985 General with 16' rough dump box setup for 5th wheel BC350-400 13 speed SQHD on spring Aluminum wheels good tires, straight cab Perfect farm truck, water truck, on site dump truck LOW MILES, \$11,500. Sherwood, OR. 503-880-2454



CAT 325L Excavator, Hendrix Coupler, Hydraulic Thumb, Cab Guard, Dig Bucket Asking \$42,950. Sandy, OR. Call Pepe: 503-544-3232; Call Pat: 503-407-9062

PLACE LINE CLASSIFIED ADS TOLL-FREE FROM ANYWHERE! 1-800-882-6789

2000 Case 580SL - \$32,000
FEATURES:
• 4,313 Hours
• 12" Bucket
• Standard Front Bucket
SPECIFICATIONS:
• Operating Weight: 15,000#
• HP: 86

902 Farm Equip. Parts

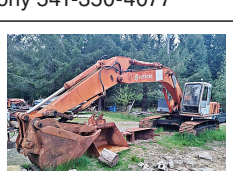
899 Heavy & Indust. Eq.



Dresser A-450E Grader: Cummins engine, excellent rubber, 12' mull board, serial number 12082, \$17,500. Sherwood, OR. 503-625-5624



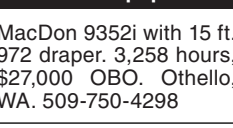
1995 Linkbelt 2800 C-2 excavator set up at TRIAD with raised cab, guarding & young grapple 24" x 60" mull board, also a single tooth ripper, 6720 hours, like new condition, \$46,000. Prineville, OR. Dave Molony 541-350-4077



Hitachi 200 Excavator, Hydraulic Thumb, Wedge Coupler, Two Buckets, Asking \$29,950. Sandy, OR. Call Pepe: 503-544-3232; Call Pat: 503-407-9062



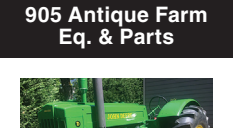
2004 Swenson Stainless Steel sand and compost distribution bed. 13ft. Complete with control box. Worked fine when taken out of service this year. Excellent condition and is ready to mount and go to work, \$4500. Located in Twin Falls ID. Call 208-613-0050



DewEze ATM 72 HILL-SIDE Riding Mower. All terrain slope mower, 3 cylinder Lister Petter diesel, hydraulic driven 72" mower deck, 34 degree slope, meter reads 595 hours, \$12,950. Clackamas, OR. 503-655-1125



1948 John Deere model D, electric start, good tires, good paint, Salem, OR. 503-393-1347



2000 Kobelco SK200LC Excavator, Hydraulic Thumb, Cummins 6 cylinder Diesel, 42" Bucket, \$42,500. Sandy, OR. Call Pepe: 503-544-3232; Call Pat: 503-407-9062

1985 General with 16' rough dump box setup for 5th wheel BC350-400 13 speed SQHD on spring Aluminum wheels good tires, straight cab Perfect farm truck, water truck, on site dump truck LOW MILES, \$11,500. Sherwood, OR. 503-880-2454



Linkbelt 2700 Quantum Excavator, Hydraulic Thumb, Dig Bucket, Guarded Cab, Wedge, 9730 Hours, Asking \$34,950. Sandy, OR. Call Pepe: 503-544-3232; Call Pat: 503-407-9062

PLACE LINE CLASSIFIED ADS TOLL-FREE FROM ANYWHERE! 1-800-882-6789

2000 Case 580SL - \$32,000
FEATURES:
• 4,313 Hours
• 12" Bucket
• Standard Front Bucket
SPECIFICATIONS:
• Operating Weight: 15,000#
• HP: 86

902 Farm Equip. Parts

907 Nursery Equip. & Supplies

FRESH SAWDUST: Consistently fair pricing. 9 Unit Loads Now Available Forest-Grove, OR. For pricing call 503-849-0216

Steamed 10x20" Nursery Flat Undertrays \$38 each (\$.88 new) or \$.35 each for 5K+, 29K available. Salem, OR. Mark 503-932-3920

USED NURSERY CONTAINERS:

Used, but reusable nursery containers. All sizes. Inventory changes daily. Call for current availability and prices. Sawyer Farms, Scio OR. 503-769-3417, juddsfarm@wvi.com (also wanted: used containers)

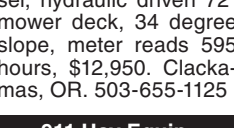
908 Garden, Turf, Yard Equip.



2004 Swenson Stainless Steel sand and compost distribution bed. 13ft. Complete with control box. Worked fine when taken out of service this year. Excellent condition and is ready to mount and go to work, \$4500. Located in Twin Falls ID. Call 208-613-0050



DewEze ATM 72 HILL-SIDE Riding Mower. All terrain slope mower, 3 cylinder Lister Petter diesel, hydraulic driven 72" mower deck, 34 degree slope, meter reads 595 hours, \$12,950. Clackamas, OR. 503-655-1125



1948 John Deere model D, electric start, good tires, good paint, Salem, OR. 503-393-1347



2000 Kobelco SK200LC Excavator, Hydraulic Thumb, Cummins 6 cylinder Diesel, 42" Bucket, \$42,500. Sandy, OR. Call Pepe: 503-544-3232; Call Pat: 503-407-9062

1985 General with 16' rough dump box setup for 5th wheel BC350-400 13 speed SQHD on spring Aluminum wheels good tires, straight cab Perfect farm truck, water truck, on site dump truck LOW MILES, \$11,500. Sherwood, OR. 503-880-2454

1985 General with 16' rough dump box setup for 5th wheel BC350-400 13 speed SQHD on spring Aluminum wheels good tires, straight cab Perfect farm truck, water truck, on site dump truck LOW MILES, \$11,500. Sherwood, OR. 503-880-2454



Linkbelt 2700 Quantum Excavator, Hydraulic Thumb, Dig Bucket, Guarded Cab, Wedge, 9730 Hours, Asking \$34,950. Sandy, OR. Call Pepe: 503-544-3232; Call Pat: 503-407-9062

PLACE LINE CLASSIFIED ADS TOLL-FREE FROM ANYWHERE! 1-800-882-6789

2000 Case 580SL - \$32,000
FEATURES:
• 4,313 Hours
• 12" Bucket
• Standard Front Bucket
SPECIFICATIONS:
• Operating Weight: 15,000#
• HP: 86

902 Farm Equip. Parts

911 Hay Equip.

John Deere 5830 chopper: 7ft grass head, \$10,000. Cloverdale, OR. 503-812-6580

New Holland 1441 Swather: rubber roller. Field ready, \$4500. Cloverdale, OR. 503-812-6580



RETIRING

HAY EQUIPMENT: Hay Squeezer/ dozer 4x4 combo, diesel, on tires, \$18,500. Deutz Tedder, \$1,400. Ford Rollover Plow, \$2,800. John Deere Land plane, \$3,700. Single Darf Rake, \$900. John Deere Seeder, \$800. Small Ripper. Disc. Packer. Klamath Falls, Oregon. John 541-892-1948

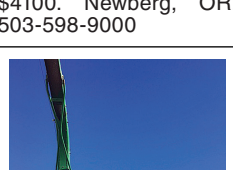
John Deere 2280 Swather: top shape, field ready with 300 Twin Knife, 12ft header, \$18,000. Madras, OR. 541-221-2358

6450 Hesston Swather, Used Last Year. **Moving Sale, \$6500.** Silver Lake, OR. 541-580-6891

6610 Hesston Swather, 14ft, cab, A/C. It's set for 15 years, \$2000. Quincy, WA. 509-785-5461

Freeman 370 Baler: Like new, only baled 27,000 bales, recent \$7,600 overhaul, new paint, hydro. \$20,000 OBO. Junction City, OR. 541-998-2429

2008 New Holland disc mower model 615, 6'8" cutting width, good condition, approximately 90 hours. No delivery. Flatbed trailer required, \$4100. Newberg, OR. 503-598-9000



John Deere 3970 Chopper with wide hay head, electric controls, serviced and ready to chop, \$7500 OBO. Vale, OR. Rex: 541-881-9436

2000 Kobelco SK200LC Excavator, Hydraulic Thumb, Cummins 6 cylinder Diesel, 42" Bucket, \$42,500. Sandy, OR. Call Pepe: 503-544-3232; Call Pat: 503-407-9062

1985 General with 16' rough dump box setup for 5th wheel BC350-400 13 speed SQHD on spring Aluminum wheels good tires, straight cab Perfect farm truck, water truck, on site dump truck LOW MILES, \$11,500. Sherwood, OR. 503-880-2454



Linkbelt 2700 Quantum Excavator, Hydraulic Thumb, Dig Bucket, Guarded Cab, Wedge, 9730 Hours, Asking \$34,950. Sandy, OR. Call Pepe: 503-544-3232; Call Pat: 503-407-9062

PLACE LINE CLASSIFIED ADS TOLL-FREE FROM ANYWHERE! 1-800-882-6789

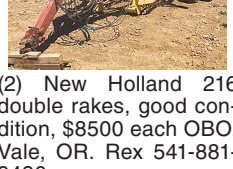
2000 Case 580SL - \$32,000
FEATURES:
• 4,313 Hours
• 12" Bucket
• Standard Front Bucket
SPECIFICATIONS:
• Operating Weight: 15,000#
• HP: 86

902 Farm Equip. Parts

911 Hay Equip.

Mil-Stak 1030s: clamp only, \$10,000. Hermiston, OR. 360-749-3080

New Holland 900 pull-type forage chopper. Early 80's model. Fair condition, works fine \$1,500. Aurora, OR. 503-706-6998



(2) New Holland 216 double rakes, good condition, \$8500 each OBO. Vale, OR. Rex 541-881-9436

John Deere 14T Baler: missing PTO parts, sitting outside, doesn't turn over, \$150. Yamhill, OR. 503-437-5048



Pottinger 4.54T Tedder. Bought it but never used. Shredded, \$10,800. Raymond, WA. 360-942-3748

Kubota mower/ conditioner 8540. 13ft cut width. Used 3 seasons. In fair condition. Tillamook, OR. 503-812-7543

Swather Case IH 8830: also Super 1048 bale wagon. Goldendale, WA. 509-773-3925

John Deere 945 Flail Conditioner Mower : all new rock guards, work horse, good condition, \$6500 OBO. Scio OR. 503-507-0359

#1 Balewagons: Buy, Sell, New Holland 283 wide self-propelled, pull-type models, parts, tires, manuals. Caldwell, ID. 208-880-2889 www.balewagon.com



New Holland 1036 Harrow Bed. Priced at \$12,000. Selah, WA. 509-388-8434

Large Supply of Rebuilt New Holland Bale Wagons: Also buying New Holland bale wagons. Sod Busters Sales, Polson, MT. 406-883-2118

John Deere 3970 Chopper with wide hay head, electric controls, serviced and ready to chop, \$7500 OBO. Vale, OR. Rex: 541-881-9436

2000 Kobelco SK200LC Excavator, Hydraulic Thumb, Cummins 6 cylinder Diesel, 42" Bucket, \$42,500. Sandy, OR. Call Pepe: 503-544-3232; Call Pat: 503-407-9062

1985 General with 16' rough dump box setup for 5th wheel BC350-400 13 speed SQHD on spring Aluminum wheels good tires, straight cab Perfect farm truck, water truck, on site dump truck LOW MILES, \$11,500. Sherwood, OR. 503-880-2454



Linkbelt 2700 Quantum Excavator, Hydraulic Thumb, Dig Bucket, Guarded Cab, Wedge, 9730 Hours, Asking \$34,950. Sandy, OR. Call Pepe: 503-544-3232; Call Pat: 503-407-9062

902 Farm Equip. Parts

911 Hay Equip.

New And Used Parts: for all models New Holland bale wagons. **Largest Inventory in North America.** Sod Busters Sales, Polson, MT. 877-735-2108 or 406-883-2118

New Holland 411 Discbine: \$3500. Yamhill, OR. 503-662-4214, 503-550-2888

RCO Baits
Gophers • Squirrels
Voies • Moles
Dealer Locator
1-800-214-2248
Harrisburg, OR 5219714-1

PRESERVOR HAY TREATMENT
THE SWED OF IBA QUALITY VALUE

Available in Oregon & SW Washington from NW Animal Supply

• Combats Shattered Leaves
• Stop Heating & Mold
• Hay Moisture 15 to 30%
• Not Propionic Acid
• Patented Potassium Sorbate Formula
• Will Not Rust Metal
• No Offensive Odor or Flavor

Find Product Info: **IBA-USA.com**
GEORGE SAUL
GASTON, OR
503-985-1001

917 Orchard/ Vineyard Equip.

Littau Diesel Berry Rotary Harvester, 1986. New cup belt and chains, new timing belt. Littau serviced 04/28/21. \$20,000 Sandy, OR. 907-232-2011



2009 New Holland H 8040 Series: 1693.2 hours, 16ft head mower, Conditioner. \$60,000 OBO. Valley, WA. 509-993-4128

2002 CASE IH STX450 Quad track, 30in tracks, easy pilot auto steer, \$90,000. Culver, OR. 541-410-4500

1977 John Deere 4430 Tractor, 125HP, \$16,500. Culver, OR. 541-410-4500

New Holland T8.275 Tractor with Duals. Approximately 2750 hours; original owner. 1 pair Rr 500lb weights, 22 front weights with bracket, Cab suspension, Navigation 11 controls. Transmission 19/4 powerlifting; Forward HD suspended with DL; DEF system bypassed. Great condition. Chiloquin, OR. 509-961-9693

2015 John Deere 6170 M with H380 Loader, MFWD, 2500 hours, 20 speed power quad, left hand reverse, quick hitch, triple remotes, duals \$120,000. Bow, WA. 360-661-2810

2018 John Deere 5100GN: orchard cab, 2500 hours, warranty to 4000 hours. Financing available, \$45,000. Albany, OR. 503-510-7779

2016 Monchiero 20125 Hazelnut Harvester. 632 hours, well maintained. Very Good Condition, \$140,000. Corvallis, OR. 541-740-9073

923 Farm Equipment

THORP OUTDOORS

920 Tractors

Farm Hand F233 Quick Attach Loader. Recently on MF180 Tractor, \$2100. Colfax, WA. Call for more information. 509-397-4709 or 509-334-8949.

920 Tractors

WANTED: Elk and Deer Hunting Rights in Oregon on private land. Great Income Potential. 541-761-1933; thorpfishhunt@gmail.com

920 Tractors

24 - 80 hp., 4WD, Compact
Syncro-Shuttle, Hydro 24, 28, 35, 47 hp

THE TRACTOR STORE
(541) 342-5464
5450 W. 11th, EUGENE, OR

Split tanks available!

UL-142 Fuel Tanks from 250 up to 18,000 gallons

Many sizes currently in-stock! Every GK Fuel Tank comes standard with the accessories for complete operation.

GK MACHINE, INC DONALD OREGON
www.gkmachine.com 877-678-5525 503-678-5525