

**758 Cattle Beef**

Steers ready to process. Whole or half. Humanely raised. Grass & grain finished. Tillamook, OR. Call for information & price. 503-812-2918.

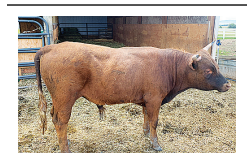
**Polled Hereford Steers**

Top quality, \$850 each. Eugene, OR. 541-342-2079

**Coming 2 year old Charolais Bull:** Excellent Quality. Polled. No Doubt and Grid Maker grandsons. Best offer. Junction-City, OR. 541-998-2429

150 Head of Yearling Black Angus Feeder Cattle. Heifers & Steers. 80+ cow/ calf pairs. Wormed, shots. Toledo, WA. 360-751-1360

**Limousin/ Hereford cross cow/ calf pairs** & yearling heifers. Tillamook, OR. 503-842-2067.



Purebred Dexter Bull: 2-1/2 years old, \$800. Goldendale, WA. 509-773-3213

**Angus Bulls:** Calving ease, ready to work, forage developed, long yearling and two year old bulls, Mary's River Angus. Monmouth, OR. 503-606-0253

**Young Angus**

100 head Young Angus May and June calving cows. 15 head Angus Replacement Heifers, weighing 650lbs. Bangs Vaccinated. Prescott, WA. 509-851-7227

Cattle Preg Checking. Rectal palpation. \$3 head, plus travel. Willamette Valley, OR, 541-297-3015



(5) Angus Feeder Heifers. Very nice. \$1.25/ pound. 600 pounders. Canby, OR. 503-201-4058

**Bulls/ Polled Herefords:** Growthy, gentle, easy calving from Canadian bloodlines, all shots, quantity discounts. Portland, OR. 503-789-1531

Looking to buy approximately 30 Angus/ Hereford cow/ calf pairs. Prefer cows from Western Oregon 3 to 5 years old. Lebanon, OR. 701-340-9467

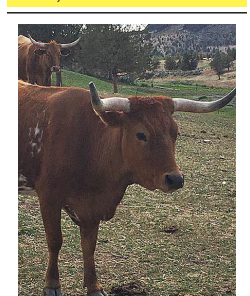
Herd Reduction: Sales Spring Pairs. Closed Herd established 40 years ago. All ages. Price depends on age. Sprague River, OR. 541-533-2416; cattle@flyingtsalers.com

2 Yearling Black Angus Bulls. Low birth EPDs. Schmidlin Angus Farms, Vernonia, OR. Call 503-429-7861

**Red Angus & Hereford registered yearling bulls,** good growth, great epd's, calving ease, very gentle, starting at \$2500. Nampa, ID. 208-941-1507

100 Registered Black Angus Yearling Replacement Heifers. Noah's Angus Ranch, Angus Cattle Since 1955. Cambridge, ID. 208-550-0531 www.noahsangusranch.com

**Great set of Polled Hereford Yearling Bulls this year. Ready to Work.** Gentle. Halter broke. Lots of testicle size. Fully vaccinated. Calving ease or growth bulls. Can deliver: Vollstedt Farms, Albany, OR. 541-990-8038, 541-926-5640



25 Longhorn Corriente Cross Cows. Late summer calving, bred to purebred Corriente bulls. Offspring proven excellent ropers. Bulls available as cows sell. Prineville, OR. For additional photos, pricing and info please call 541-480-0866

Registered Wagyu Yearling Bulls and Heifers Available. Great for F1 breeding. www.rickeycanyonranch.com. Kettle Falls, WA. 509-690-6119

**Registered Black Angus Bulls:** out of top AI Sires, Semen tested, BVD/ PI negative. Docile and easy to work. Free delivery. JSL Angus, Madras, OR. 503-849-0803. Find us on Facebook.

**761 Bison**

**BUFFALO:** Young cow 6 years old & young bull 22 months old. Great shape & ready to go. Centralia, WA. 360-304-6964

**801 Timber/Lumber**

**BUYING TIMBER**

**TOEPPER LOGGING, INC.** Timber Harvesting, Slash Piling, Reforestation: high quality forest and land management services. Certified professional logger. Over 50 years in the timber industry Stayton, OR. Call Jake 503-769-5505, 503-991-6845

**STANDING TIMBER Wanted**



**NWTL Inc.** Prices are up, turn your Timber into Revenue!

- Small stands,
  - Large tracts,
  - One time harvest,
  - Continuous management plans.
- Logging offered on percentage or by the MBF. Free consultation. References available. Sandy, OR. 503-956-0110; Visit [www.nwtlinc.com](http://www.nwtlinc.com)

**801 Timber/Lumber**

**WANTED**

BUYING YEW TREES 4" and up. Small stands or large. Portland, OR. 503-757-1750

**802 Fencing**

**Montana Hydraulic Post Drivers.** In stock! NW Farm Supply Hermiston, OR. 800-801-5650 or Mike 541-561-6047

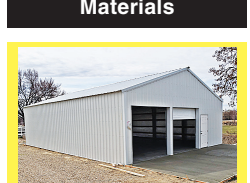


**Fence Installation:** Fence installed with hydraulic post driver. New Zealand, nonclimb, sheep & goat, woven wire, barbed wire, deer, and rail fencing. Serving Oregon since 1993. Licensed, Bonded & Insured CCB#93256. Salem, OR. 503-859-2804 [www.statewidefence.net](http://www.statewidefence.net)

**Fence Posts:** Douglas Fir, Penta Power Pole Treated, round rail fencing. Tinker Toy Fence. Junction City, OR. For hours, 541-689-3726

Does your business need calls, customers and sales? Advertise in Capital Press Line Ad Classifieds. Call 1-800-882-6789

**804 Building Materials**



**30'x40'x10'** Starting at \$24,500 Pole Buildings: includes 2 garage doors and a personal door. Phillips Construction and Fencing, LLC. Serving the Treasure Valley area from Mountain Home to Weiser, ID. 208-604-3844



**SPRAY FOAM-** Improve building efficiency, comfort, structural integrity, and stop condensation. For residential houses, warehouses, coolers, shops, poultry houses, etc. Serving Washington and Oregon. CCB#221577 Call 360-827-1309



**Galvanized Decking** 36"Lx9"Wx1.5"d. Large quantities available. \$10 each. Davenport, WA. 509-721-0120

**804 Building Materials**

**GLULAM BEAMS:** Used Treated and Untreated. Many sizes up to 65' long. Portland, OR. 503-936-9414



Good Used Heavy Gauge Metal Roofing. Sheets are 3'x18'. Approximately 2000 sheets. We can trim to fit. Wilsonville, OR. 503-806-7536

1-800-882-6789 CapitalPress.com

**804 Building Materials**

We buy old corrugated metal roofing and siding. We pay more than scrap prices. Aurora, OR. 503-678-6083

3 Pole building tear downs and one metal building 44x32 with (2) 14ft roll up doors. Lots of glulam beams, poles, trusses, cement blocks, and plywood. Make offer. Must sell. Independence, OR. 503-838-3740, 503-383-6722

**NUCOR BUILDING SYSTEMS**  
www.absbldgs.com  
FREE QUOTE: 971-267-7910  
info@absbldgs.com  
ADVANCED BUILDING STRUCTURES

**804 Building Materials**

**Don't Replace Your Metal Roof REPAIR IT with Conklin's Repair System**

**CONKLIN**

- Rust Control
- Stop Leaks
- Reflective or Colored Top Coats
- Conklin Products Sales

Oregon • Washington  
503-881-1946 • 360-727-3500  
www.johnsonroofcoatings.com  
www.primecutconstruction.com/metal-roof-repair/  
OR#220906 • WA#PRIMECC92JTG

**Quality Steel Buildings**

**CALL US FOR GREAT PRICING ON:**

- ECONOMY PANELS
- GALVALUME PANELS

See our website for additional panel profiles and products!  
[www.metallionindustries.com](http://www.metallionindustries.com)  
40 yr. warranty paint \*\*\* 30+ colors available

**METALLION INDUSTRIES**

HOURS: Mon - Fri 8:00 - 5:30  
850 NW Park Avenue, Estacada, OR 97023 503-630-7740 Fax 503-630-7770  
Live Every Day for Jesus!

**PARKER BUILDINGS INC.**  
PARKERBUILDINGS.COM

**QUALITY SINCE 1982**  
1-800-331-0155  
503-981-0890  
Building Materials Supplier  
FOB HUBBARD, OR

**ENCLOSED PERMITTED BUILDING**

	10' Eave	12' Eave	14' Eave	16' Eave
24 x 36	\$10,269	\$11,195	\$12,014	\$12,907
30 x 36	\$11,967	\$12,919	\$13,830	\$14,801
30 x 48	\$14,365	\$15,366	\$16,471	\$17,972
36 x 36	\$13,729	\$14,710	\$15,714	\$16,984
36 x 48	\$16,547	\$17,661	\$18,792	\$20,557
40 x 48	\$18,570	\$19,747	\$20,974	\$22,941
40 x 60	\$21,577	\$22,881	\$24,310	\$26,076

KIT CONTAINS: (1) 3'x6'-8" Entry Door, (1) 11' wide Slider Door, Galvanized Roof, Painted Walls & Trim. These buildings have Engineered Plans & price is based on 25# Snow load, "B" Exposure.  
\*Prices subject to change.

- WAREHOUSES
- BARN • ARENAS & STALL BARN
- COMMERCIAL • SHOPS & GARAGES • RESIDENTIAL

**NWH NORTHWEST HARDWOODS**

**ALDER WANTED**  
Also Maple and Ash: Saw Logs Pulp Logs and Timber Deeds

Contact our Resource Group at these locations:

<b>Coos Bay, OR:</b>	Tim T. (541) 231-4758 Lee A. (541) 290-9892
<b>Eugene, OR:</b>	Tim T. (541) 231-4758
<b>Garibaldi, OR:</b>	Lee A. (541) 290-9892
<b>Salem, OR:</b>	Tim T. (541) 231-4758
<b>Longview, Wa:</b>	John A. (360) 269-2500 Bill B. (360) 520-2287
<b>Centralia, WA:</b>	Jeremy M. (360) 520-5565 Bill B. (360) 520-2287
<b>LaConner &amp; Everett, WA</b>	Mark F. (360) 202-9141

**Farm Seller.com**  
AMERICA'S FARM AND RANCH DATABASE

**COUNTRY VALUES. BIG CITY RESULTS.**

Ag in the west news delivered in print or online.

**BISON PIPE & SUPPLY** 800.764.7473 BISONPIPE.COM

**LARGE DIAMETER PIPE AVAILABLE**

OTHER SIZES AVAILABLE!  
240 E. FRONTAGE RD. N. JEROME, ID 83338

**Call Us for Your WELL STEM PIPE NEEDS**  
We Deliver Straight to You!

**ROCKY MOUNTAIN STEEL**

- USED CABLE
- ALL FENCING HARDWARE AVAILABLE
- CABLE CLAMPS

Direct Ship & Cutting Available

400 3rd Ave. North Nampa, ID 83687  
800-851-8612  
208-466-0036  
208-466-8913 (FAX)

Subscribe Today.  
1-800-781-3214

**Capital Press**  
1-800-882-6789  
CapitalPress.com

- Newspaper
- E-editions
- E-newsletters
- Mobile
- Website

**WATERPROOF PROTECTION FOR YOUR FACILITY**

"I knew I had found the solution to the (water leak) problem."  
Woodrow, WI

**AMES WATERPROOF COATINGS**

MAXIMUM STRETCH ELASTOMERIC ROOF COATING & SEALANT  
BLUE MAX LIQUID RUBBER WATERPROOFER  
ELASTO BARRIER ADHESIVE BASE COAT

- ◆ Up to 1200% Elastomeric
- ◆ Up to 88% Reflectivity
- ◆ Eco-Friendly
- ◆ Easy Clean-up
- ◆ Guaranteed Protection
- ◆ Bulk Rates Available

MADE IN SALEM, OR  
CALL 1-888-345-0809 OR VISIT [WWW.AMESRESEARCH.COM](http://WWW.AMESRESEARCH.COM)

**804 Building Materials**

**804 Building Materials**

**INSTALLATION • DESIGN**

**MINER POLE BUILDINGS LLC**

- BOARDING FACILITIES • STALL BARN
- WAREHOUSES HAY STORAGE
- CUSTOM BUILDINGS
- PERSONAL RIDING ARENAS
- SHOPS & GARAGES • CLEARSPANS UP TO 100'

"They have built two arenas for us and did an excellent job on both! They are fast, professional and do excellent work!"  
~ Kim Yore, Castle Rock, WA

17825 Painter Loop NE, Hubbard, OR 97032  
Oregon ccb# 205558 • WA License #MINERP884180

888.453.5964 • WWW.MINERPOLEBUILDINGS.COM

**805 Farm Buildings**

**METAL BUILDINGS!**  
52 Years of Manufacturing Excellence  
Buy Factory Direct!

Equipment Storage • Shop • Barn  
Hay Shed • Dairy Shade • Arena  
Roofing, Siding, & Trim

**Call Today!**

**R & M STEEL COMPANY**  
**R&M Steel Co.**  
208-454-1800  
www.rmsteel.com  
sales.rmsteel@gmail.com