

210 Trucks



1996 IHC 4900 15ft. flat-bed truck with removable 4 ft. stake sides and 3000 Lb. liftgate. T444E, 7.3 L. Turgo Diesel with 5 and 2 trans. 103,000 ACTUAL MILES. Brand new radial tires. 26,000 GVW. NO CDL. One owner truck from Cal Fire. Clean, well maintained and operates like new. \$14,900. Located in Twin Falls ID. Call 208-613-0050



2003 Freightliner FL70 cab and chassis. 330HP CAT 3126 Diesel. Allison 6 speed. AT with retarder and PTO capable. PS, AC. 16ft. of straight 11in. frame. Brand new radials. 33,000 GVW. Former California State vehicle that is as clean as new and has had excellent fleet maintenance. Truck is in like new condition, \$14,900. Located in Twin Falls ID. 208-613-0050



1988 IHC 1900 Dump Truck. 7 to 8 yard. 4x4. DT466 Diesel. Allison Automatic 2 speed transfer. 41,000 Actual Miles. Good rubber. One owner former Municipal truck. Runs and works like new, \$14,900. Located in Twin Falls ID. Call 208-613-0050



2007 UD 1400 Box van. 14250 pound GVWR. 15' box w/ rear barn doors and side roll up door. Nissan 175 HP turbo diesel, auto transmission, power steering and brakes. Power windows and door locks. Air conditioning and tilt steering column. 108,000 miles, good tires, new batteries. Clean, runs and drives well, \$13,450. Corbett, OR. 503-695-2650



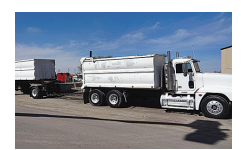
2005 IHC Paystar 5500i tandem dump truck. 14ft. Stainless Steel dump bed with 28in. live chain floor with removable conveyor cover and regular tailgate with metered gate discharge. Cummins ISX 435HP Diesel. Eaton 13 speed. PS, AC, CC, Jake. Brand new 11/22.5 radials. Bed alone is \$70K new. One owner former State truck that is in like new condition. Well maintained! \$36,900. Located in Twin Falls ID. Call 208-613-0050



2004 IHC 7400 Dump Truck with DT530 Diesel, 300HP. Eaton 10 speed Transmission. 37K. GVW. AC, Cruise, Jake brake. Plumbed for trailer. 70% 12/22.5 radials. Low miles. One owner former State agency. Very clean and well maintained. Ready to work, \$19,900. Located in Twin Falls ID. Call 208-613-0050



2001 IHC 4900 single axle dump truck. 7 to 8 yard. DT466 Diesel. Allison 6 speed. Automatic. PS, AC, CC. 150K. ACTUAL MILES. Near new 11/22.5 radials. Very clean and well maintained former State truck that is RUST FREE and work ready, \$18,900. Located in Twin Falls ID. Call 208-613-0050



2001 Freightliner Transfer Dump Truck. 15 yard main with HiLift airgates on truck and trailer. CAT C12 Diesel. 410HP. 13 speed. Jake Brake, CC, AC, PW. 80% 11/22.5 radials on alloy wheels. This one owner truck is spotlessly clean and has been well maintained. NO RUST, NO DAMAGE. Runs drives and operates like new, \$34,900. Located in Twin Falls ID. Call 208-613-0050

210 Trucks



1979 International Cabover: Big Cam 350, 13 speed. wet kit. 660,000 original miles, \$8,500. Atwater, CA. 209-604-1342



2007 IHC 9200i tandem axle semi tractor. CAT C13 Acert 435HP Diesel. Eaton Fuller Auto Transmission. AC, CC, PW, PM, Jake Brake. 70% 11/22.5 radials tires. Very clean and well maintained fleet vehicle with lots of life left, \$14,900. Located in Twin Falls ID. Call 208-613-0050



1991 Ford 8000 Fire Engine. 3208 Turbo Cat Diesel. Allison AT. Hale Power Shift pump and apparatus. 1000 GPM @150 PSI. 1200 Gal. Tank. Water Cannon, draft hard hose and ladders and all emergency equipment. Former County truck that is clean as new and operates the same, \$9900. Located in Twin Falls, ID. Call 208-613-0050

210 Trucks

CLASS 8 TRUCKS 509-534-9088



1999 Freightliner FLD112 Cummins M11 425 hp, 10 spd., A/C, 3.90 ratio. \$19,900



2012 Peterbilt 389 Cimmins ISX 600 hp 18 spd., 2050 TQ, 270" WB, 70" stand up sleeper, low miles on Crate engine \$74,900



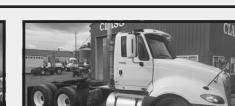
2009 Sterling Service Truck Cummins, 9 spd., diff. lock, IMT 3820 Crane, Miller Welder/compressor, hydraulic reel, liftgate, water tank with pump, fuel storage, Hyrail gear, low miles...CALL



2005 4300 NON CDL box truck DT466E, Allison automatic, 24" box with tuck away liftgate....CALL



2008 Peterbilt 386 Cummins ISX, 18 spd., lockers, drop axle, wet kit. CALL



2010 International Prostars Cummins ISX 475, Jakes, 10 spd., 3.70 ratio, air ride, no DPF, no EGR. \$24,900

TRY CAPITAL PRESS CLASSIFIEDS CALL TODAY! 1-800-882-6789 FAX (503) 370-4383 • CapitalPress.com

R & G MACHINING AND ENGINE PARTS COMPLETE DIESEL MACHINE SHOP AND TRUCK REPAIR

Table with columns for Rebuilt Gas L/B Engines (Ford, Chrysler & Jeep, Toyota, GM) and Rebuilt Diesel L/B Engines (Cummins, Perkins & Isuzu, Mitsubishi & Nissan, Yanmar & Kubota, Bobcat & Shibauro, Doosan & Takeuchi, Mercedes, Hino & Iveco, John Deere & IH, Kobelco, Komatsu, Hitachi, Caterpillar & Hyundai).

IN BUSINESS SINCE 1975. OVER 250 ENGINES & 450 CYLINDER HEADS IN STOCK! NEED ENGINE PARTS, GAS OR DIESEL - CHECK IT OUT: WWW.EBAY.COM/STR/GRUMPYSPERFORMANCECENTER

LOVELL Truck Sales 50th Anniversary

Advertisement for Lovell Truck Sales featuring various truck models and prices, including a 2003 Freightliner, 2006 Sterling, 2019 Isuzu, and 2004 International.

POWER FLEET & COMMERCIAL SALES MEDIUM DUTY DEALER

Advertisement for Power Fleet & Commercial Sales featuring staff photos (Jim Church, Delana Johnson, Brian Heinrich, Ryan Church) and vehicle listings (Silverado Med Duty Trucks, 2020 Chevy).

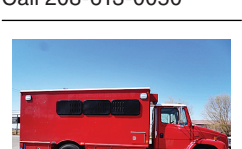
210 Trucks



WANTED: Dodge Ram, Cummins turbo diesel, 2010 to 2014. 4 door, 4x4, manual transmission. Private. CASH buyer. Dan 360-304-1199



1988 Kenworth T800 with 21ft. roller deck dump bed. NTC Cummins Diesel. 13 speed. Jake, AC, PS. 236K MILES. 70% 11/22.5 radials. Very clean and well maintained original owner truck that is rust free and work ready, \$17,900. Located in Twin Falls ID. Call 208-613-0050



2003 Freightliner FL70 Hot Shot Crew Truck. 300 HP Diesel. Allison 6 spd Auto Trans. Retarder, PS, AC, CC. Air Cond. and heat in 14 person crew box. Brand new 11/22.5 radials tires. Low Miles. This former State truck is as clean as a new one and is work ready. Needs nothing, \$19,900. Located in Twin Falls, ID. Call 208-613-0050



1996 Ford LN7000 with mechanic's bed, 6500 LB. All hydraulic Auto Crane, 160 CFM Sullair Rotary screw air compressor, PTO Drive and Honda 3500 Watt Gen-set. Cummins 5.9 Diesel. Allison Auto transmission. PS, AC. 80,000 ACTUAL MILES. One owner truck from a large Southern California County. In near new condition, \$15,900. Located in Twin Falls Idaho. Call 208-613-0050

222 Truck/Auto Parts & Accessories

Winch type front bumper for 1977 Ford 3/4 ton truck. Like new, \$150. 1-1/2 ton two speed differential, 4 wheels, 3 good 750x20 tires, \$200. Quincy, WA. 509-785-5461

228 Tires & Wheels USED FLOTATION TIRES

66x43.00 - 25 18.4 - 16.1 16.5L - 16.1 66x43.00 - 25 18.4 - 16A 48x31.00 - 20 21.5L - 16.1SL 13.6 - 28 16.0 - 24 18.4 - 34 Meridian, ID 208-888-1376

316 Trailers Misc.



2003 40ft General Ranco belly dump rock trailer, good condition, \$22,000. Scio, OR. 503-932-4986



2000 Walker 7000 Stainless Tanker Trailer, Food Grade, Insulated, NICE, \$27,500 Wilsonville, OR. 503-260-0303

Advertisement for Capital Press featuring a photo of a dog and the text 'A picture is worth a 1,000 words'.

316 Trailers Misc.



2004 30ft Heavy Duty PJ gooseneck trailer, dual axles, tilt down ramps, \$10,000. Ferndale, CA. 707-845-7323



2000 Classic 3 horse Weekender Trailer. King sized bed, dressing room, separate tack room. Always Sheddied, excellent condition, \$14,500. Othello, WA. 509-760-3276

316 Trailers Misc.

Miscellaneous 3 axle equipment trailer, 20ft semi pull trailer, 45ft storage vans, (2) 1980 diesel trucks, 1 Bartlett 5th wheel, 2 fork lifts, Salem, OR. 503-507-6532

319 Trailers, Horse & Stock



2000 Classic 3 horse Weekender Trailer. King sized bed, dressing room, separate tack room. Always Sheddied, excellent condition, \$14,500. Othello, WA. 509-760-3276

222 Truck/Auto Parts & Accessories

ARMY TRUCKS 4x4 & 6x6

COMPLETE PARTS INVENTORY MEMPHIS EQUIPMENT 901-774-0600 (TN) www.memphisequipment.com THE NATION'S LARGEST ARMY TRUCK DEALER

257 Boats Wanted 257 Boats Wanted

Advertisement for word search featuring the text 'Your ad here!' and a grid of letters.

222 Truck/Auto Parts & Accessories



2001 IHC 2574 tandem axle cab and chassis. N-14 Cummins, 13 speed. 112,000 ACTUAL MILES. Jake, PS, AC, PS. Traction lock. 164" cab to trunkion. Double frame full length. Hendrickson spring rears. 64,000 GVW. Near new 22.5 Radial tires. Former California DOT truck that has had excellent maintenance. Runs, drives and operates like new. NO RUST! \$29,000. Located in Twin Falls ID. Call 208-613-0050

222 Truck/Auto Parts & Accessories

FLATBEDS Pro-Line all steel flatbeds are complete, installed, wired, and ready to work!

Advertisement for Pro-Line Flatbeds featuring a photo of a flatbed truck and a list of features like powder coating, mud flaps, and backup lights.

354 Auction Sales

Advertisement for Meridianeq.hibid.com featuring a photo of a skid steer loader and a boat.

354 Auction Sales

Advertisement for Meridianeq.hibid.com featuring a photo of a skid steer loader and a boat.

354 Auction Sales

316 Trailers Misc.

Advertisement for Arrowquip featuring a photo of a green livestock handling system.

316 Trailers Misc.

Advertisement for Diamond Trailer Sales featuring a photo of a green livestock handling system.