

210 Trucks



1988 IHC 1900 Dump Truck. 7 to 8 yard. 4x4. DT466 Diesel. Allison Automatic 2 speed transfer. 132,000 Actual Miles. Good rubber. One owner former Municipal truck. Runs and works like new, \$14,900. Located in Twin Falls ID. Call 208-613-0050



2005 IHC Paystar 5500i tandem dump truck. 14ft. Stainless Steel dump bed with 28in. live chain floor with removable conveyor cover and regular tailgate with metered gate discharge. Cummins ISX 435HP Diesel. Eaton 13 speed. PS, AC, CC, Jake. Brand new 11/22.5 radials. Bed alone is \$70K new. One owner former State truck that is in like new condition. Well maintained! \$36,900. Located in Twin Falls ID. Call 208-613-0050

210 Trucks

CLASS 8 TRUCKS 509-534-9088



1999 Freightliner FLD112
Cummins M11 425 hp, 10 spd., A/C, 3.90 ratio.
\$19,900



2012 Peterbilt 389
Cummins ISX 600 hp 18 spd., 2050 TQ, 270" WB, 70" stand up sleeper, low miles on Crate engine
\$74,900



2009 Sterling Service Truck
Cummins, 9 spd., diff. lock, IMT 3820 Crane, Miller Welder/compressor, hydraulic reel, liftgate, water tank with pump, fuel storage, Hyrail gear, low miles...**CALL**



2005 4300 NON CDL box truck
DT466E, Allison automatic, 24' box with tuck away liftgate...**CALL**



2001 Freightliner 4-Axle
12.7 Detroit, Jakes, 13 speed, 3.70 ratio, A/C, 2 tool boxes, headache rack.
\$34,900



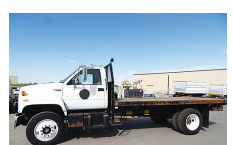
2010 International Prostars
Cummins ISX 475, Jakes, 10 spd., 3.70 ratio, air ride, no DPF, no EGR.
\$24,900

210 Trucks



2004 IHC 7400 Dump Truck with DT530 Diesel, 300HP. Eaton 10 speed Transmission. 37K. GVW. AC, Cruise, Jake brake. Plumbed for trailer. 70% 12/22.5 radials. Low miles. One owner former State agency. Very clean and well maintained. Ready to work, \$19,900. Located in Twin Falls ID. Call 208-613-0050

210 Trucks



1994 GMC TopKick flat bed dump truck. 16ft. bed. Wood floor and stake pockets. 70,000 ACTUAL MILES. 427 High Deck V8 gas. 5 & 2 transmission. PS and AC. Brand new 22.5 radials tires. Spotlessly clean and all original truck from the California Department of Water Resources. Well maintained. Runs, drives, operates and looks like new, \$14,900. Located in Twin Falls ID. Call 208-613-0050

316 Trailers Misc.



Water Hauling Trailer for large acreage spraying, 6000 gallon, hydraulic driven pump, heater unit for winter use. Insulated stainless steel, 2 compartments. \$9,000. Meridian, ID. 208-888-1376

Miscellaneous
3 axle equipment trailer, 20ft semi pull trailer, 45ft storage vans, (2) 1980 diesel trucks, 1 Bartlett 5th wheel, 2 fork lifts, Salem, OR. 503-507-6532



2000 Walker 7000 Stainless Tanker Trailer, Food Grade, Insulated, NICE, \$27,500 Wilsonville, OR. 503-260-0303



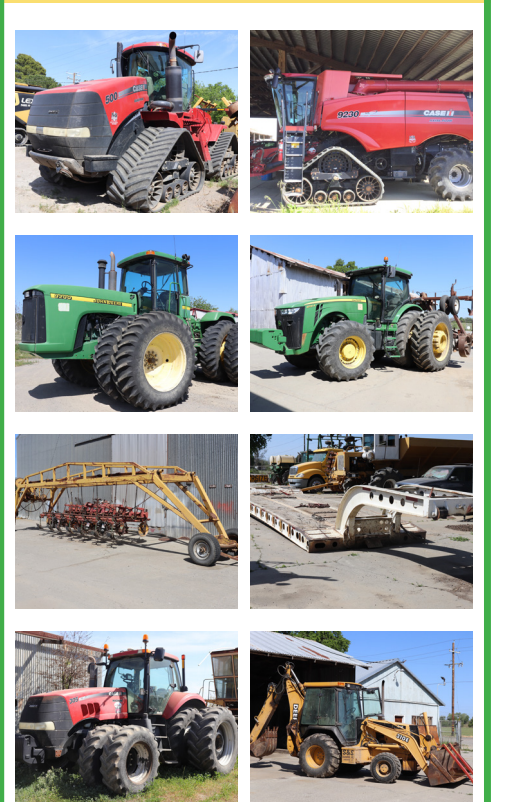
2001 IHC 4900 single axle dump truck. 7 to 8 yard. DT466 Diesel. Allison 6 speed. Automatic. PS, AC, CC. 150K. ACTUAL MILES. Near new 11/22.5 radials. Very clean and well maintained former State truck that is RUST FREE and work ready, \$18,900. Located in Twin Falls ID. Call 208-613-0050

222 Truck/ Auto Parts & Accessories
Winch type front bumper for 1977 Ford 3/4 ton truck. Like new, \$150. 1-1/2 ton two speed differential, 4 wheels, 3 good 750x20 tires, \$200. Quincy, WA. 509-785-5461

Looking for a farm or ranch?
VISIT **FarmSeller.com**

354 Auction Sales

ONLINE AUCTION COLUSA FARM ESTATE COLUSA, CA MAY 28th - JUNE 1st 2021



LEARN MORE AT:
AUCTION-IS-ACTION.COM

PUTMAN AUCTIONEERS, INC.
CA BOND NO. 7238559
EMAIL: putman.kevin@yahoo.com
KEVIN PUTMAN JOHN PUTMAN
(530) 566-5083 (530) 701-8596

CALL CAPITAL PRESS CLASSIFIEDS TO:
Find a new barn... Call toll free: 1-800-882-6789
Sell your chickens... Fax: 503-370-4383
Source more hay... Or go ONLINE 24/7/365 @ CapitalPress.com

LOVELL Truck Sales

50th ANNIVERSARY

2006 Sterling three axle day cab, 450 hp, fuller 10 speed, air ride suspension, engine brake, air slide 5th wheel, dump vial, 160" wb, 237k miles. **\$19,500**

2003 Freightliner FL-112, tandem axle knuckle boom truck. MBE 4000 370hp, Fuller 8LL, 46k rears, 20k front axle, lift axle, trailer package, 252" wb, ps, ac, cruise control, tuff track suspension, 208k miles, Fassi F270 knuckle boom crane with remote. **\$39,500**

2019 Isuzu NRR 18' box truck, Isuzu diesel, automatic transmission, 18x102 box, 177" wb, ps, ac, cruise control, power windows and locks, 101k miles, 19,500gvw. **\$39,500**

2001 International 26' van, International 466E/195 Hp, 4-spd auto, 254" WB. **\$16,950**

2001 Freightliner single axle tractor Allison MD-3060p automatic transmission, Cat 250 hp, 152" wb. **\$13,500**

2013 Freightliner three axle day cab, Cummins ISX 450hp, Fuller 10 spd, air ride suspension, 166" wb, ps, ac, cruise control, air slide 5th wheel, dump valve, power windows and locks, engine brake, 267k miles. **\$38,500**

2004 and 2006 International 4400 single axle tractor DT-466 250 hp, fuller 10 speed, 150" wb, 11r 22.5 tires. **\$12,500 each**

1-800-451-0012
(503) 266-5886
FAX (503) 266-6903
LOVELLTRUCKSALES.COM
680 SW 1st Ave (Hwy 99 E) • Canby, OR

Buying or Selling
Capital Press is here to help you!
1-800-882-6789
or FAX 503-370-4383
CapitalPress.com

2001 Ottawa Commando 50 single axle yard tractor, Cummins 5.9 Liter/148 Hp, 4-spd. auto., 116" WB. **\$29,500**

2002 Workhorse P42 11'x89" fleet van, GM V-8/6.5L diesel, 160 Hp, 4-spd. automatic. **\$10,950**

2001 International 26' van, International 466E/195 Hp, 4-spd auto, 254" WB. **\$16,950**

2001 International 26' van, International 466E/195 Hp, 4-spd auto, 254" WB. **\$16,950**

2014 Kenworth T470 tandem axle day cab truck tractor, Cummins ReCon ISL9 CM2350 L101-8.9 Liter/380 Hp, Eaton Fuller 10-spd., 184" WB. **\$27,500**

2001 International 26' van, International 466E/195 Hp, 4-spd auto, 254" WB. **\$16,950**

2001 International 26' van, International 466E/195 Hp, 4-spd auto, 254" WB. **\$16,950**

2014 Kenworth T470 tandem axle day cab truck tractor, Cummins ReCon ISL9 CM2350 L101-8.9 Liter/380 Hp, Eaton Fuller 10-spd., 184" WB. **\$27,500**

THIS AD SPACE could be yours!
1-800-882-6789
or FAX 503-370-4383
CapitalPress.com

CUSTOM FABRICATION
We can meet your needs!
541-447-4555
PRO-LINE
FABRICATION
Prineville, OR 97239-0111

228 Tires & Wheels

USED FLOTATION TIRES
66x43.00 - 25
18.4 - 16.1
16.5L - 16.1
66x43.00 - 25
18.4 - 16A
48x31.00 - 20
21.5L - 16.1SL
13.6 - 28
16.0 - 24
18.4 - 34
Meridian, ID
208-888-1376

Summer Consignment Auction

Online Only
Agricultural - Industrial - Construction- Surplus - Shop - More
Meridian Equipment Auction Co
5946 Guide Meridian,
Bellingham, WA 98226
Bidding Opens May 22

Featuring- Industrial Surplus, Excavators, Pickups, Trucks, Tractors, Shop Tools, Attachments and Much More

Meridianeq.hibid.com
Sale Conducted By
Meridian Equipment
5946 Guide Meridian
Bellingham, WA 98226
WAL#0002165
MERIDIANEQ.COM **1-800-905-2141**

Bidding CLOSES
JUNE 5, 2021

R & G MACHINING AND ENGINE PARTS

COMPLETE DIESEL MACHINE SHOP AND TRUCK REPAIR
MULINO, OREGON • SHOP: 503-829-6038 • NATIONWIDE: 1-800-823-6038
We Absolutely, Positively Have The Best Remanufactured Engines Available Anywhere!
Huge Inventory • Expert Technical Assistance

REBUILT GAS L/B ENGINES		REBUILT DIESEL L/B ENGINES	
FORD	CHRYSLER & JEEP	CUMMINS	PERKINS & ISUZU
300.....\$1,595	3.8-3.9.....\$1,899	3.9-4BT.....\$4,150	Starting at.....\$5,995
4.6-5.4.....\$2,895	4.0-4.2.....\$1,895	5.9 '88-'02.....\$4,250	Starting at.....\$5,995
302-351-400.....\$1,895	318-360.....\$1,899	5.9 '03 & up.....\$4,650	Starting at.....\$5,995
415-V10.....\$3,295	488 V10.....\$3,395	6.7 C/R.....\$4,950	Starting at.....\$5,995
460 '72-'92.....\$1,899	22RE.....\$1,395	FORD	Starting at.....\$4,495
GM	All years & models.	6.0 P/S.....\$5,345	Starting at.....\$4,495
4.3 V6 '85-'91.....\$1,595	Turbos, Injectors, High Pressure Oil Pumps, Fuel Injection Pumps, Oil Coolers, Computers - Ford, GM, Dodge.	6.4 P/S.....\$6,045	Starting at.....\$4,495
350 '69-'88.....\$1,595		6.7 P/S.....\$7,150	Starting at.....\$3,995
350 '89-'02.....\$1,899		6.9-7.3 IDI.....\$4,650	Starting at.....\$5,995
454 '75-'87.....\$1,899		7.3 P/S.....\$4,650	Starting at.....\$5,995
		GM	Starting at.....\$5,995
		6.6 Duramax.....\$6,050	Starting at.....\$8,995
		6.2-6.5.....\$4,395	Starting at.....\$8,995
		JOHN DEERE & IH	Starting at.....\$5,995
		Starting at.....\$5,995	Starting at.....\$5,995
		KOBELCO, KOMATSU, HITACHI	Starting at.....\$5,995
		CATERPILLAR & HYUNDAI	Starting at.....\$5,995
		Starting at.....\$5,995	Starting at.....\$5,995

We have a large inventory of rebuilt or remanufactured cylinder heads, connecting rods, crankshafts, and blocks on an exchange basis for diesel and gas engines.

Call on other gas or diesel engines. We are a major rebuild on all diesel brands. All work done in house!

IN BUSINESS SINCE 1975.

OVER 250 ENGINES & 450 CYLINDER HEADS IN STOCK!
We have a complete line of import diesels and obsolete diesels for your mini excavators or skidsteers. We work and repair all brands!

NEED ENGINE PARTS, GAS OR DIESEL - CHECK IT OUT:
WWW.EBAY.COM/STR/GRUMPYPERFORMANCECENTER
GRUMPYPERFORMANCE@GMAIL.COM

CHOOSE 45 YEARS OF SERVING THE PACIFIC NORTHWEST!

RATCO
541-747-2849

Ratco has been rebuilding transmissions and differentials for over 45 years. Call Ratco first and we'll go over your symptoms and help you decide what you might need. We stock reman units, rebuild your unit, or repair your unit. We will advise you decide. We can also order new units at competitive prices—shipped anywhere in the USA. Call 541-747-2849 anytime.

WE'RE HERE TO HELP YOU GET BACK ON THE ROAD!

TRUCK GEAR SPECIALISTS
3620 Olympic Street
Springfield, OR | 541-747-2849
5221411-1

ONLINE ONLY ESTATE SALE

INCLUDING GUNS & AMMO, TOOLS, EQUIPMENT, AUTO AND MISC.

May 29th at 11am (MDT)
www.daapublic.com
Open to the public.
Register at the website listed.

DAA PUBLIC
3323 PORT ST. NAMPA, ID
208-463-8250
INFO@DAAPUBLIC.COM
SUBJECT TO CHANGE

POWER FLEET & COMMERCIAL SALES
MEDIUM DUTY DEALER



2011 Ram 4500 4WD Bucket Truck
Call Today for your Business Preferred Pricing!

Jim Church 503-910-7784
Delana Johnson 503-769-7100
Brian Heinrich 503-504-3629
Ryan Church 503-877-7102



CHEVROLET BUSINESS ELITE
POWER FLEET - COMMERCIAL
WWW.POWERAUTOGROUP.COM
503-769-7100

ONLINE AUCTION

FARM & ESTATE LIQUIDATION
TOLEDO, OREGON
Online Bidding Ends June 9th

CRAWLERS, LOADERS, BACKHOE, TRACTORS, IMPLEMENTS, UTV, ATV, GOOSENECK TRAILER, TRAVEL TRAILER, CHEV. DURAMAX, GRAIN TRUCK, FIREWOOD, LUMBER, ANTIQUES AND MORE

Miller & Co.
AUCTIONEERS
Jim Miller 503-312-1992
Visit **jmillerauctioneers.com** for more information

Auction Sales Co.

YAMHILL CO. HISTORICAL SOCIETY AUCTION
Bidding Open! | Auction Starts to Close Sat May, 22nd at 9am.

AUCTIONS.ALES.CO.COM

UPCOMING AUCTIONS: June 27th & 28th, 2021

541.296.1012 | 1400 US Hwy 197 - The Dalles, OR | Auction Sales Co.