

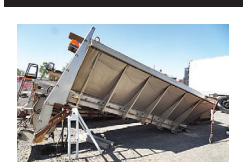
**907 Nursery Equip. & Supplies**

**USED NURSERY CONTAINERS:**  
Used, but reusable nursery containers. All sizes. Inventory changes daily. Call for current availability and prices. Sawyer Farms, Scio OR. 503-769-3417, juddsfarm@wvi.com (also wanted: used containers)

**FRESH SAWDUST:**  
Consistently fair pricing. 9 Unit Loads Now Available Forest-Grove, OR. For pricing call 503-849-0216

Steamed 10x20" Nursery Flat Undertrays \$.38 each (\$.88 new) or \$.35 each for 5K+, 29K available. Salem, OR. Mark 503-932-3920

**908 Garden, Turf, Yard Equip.**



2004 Swenson Stainless Steel sand and compost distribution bed. 13ft. Complete with control box. Worked fine when taken out of service this year. Excellent condition and is ready to mount and go to work, \$4500. Located in Twin Falls ID. Call 208-613-0050



DewEze ATM 72 HILLSIDE Riding Mower. All terrain slope mower, 3 cylinder Lister Petter diesel, hydraulic driven 72" mower deck, 34 degree slope, meter reads 595 hours, \$12,950. Clackamas, OR. 503-655-1125

**911 Hay Equip.**

2018 John Deere 328 Square Baler: bale turner ramp. Bought new in 2019. Good Baler, \$21,000 OBO. Tillamook, OR. 503-842-4088



2020 Massey Ferguson WR9980 rotary swathers. 2 units available; 540 hours and 551 hours, \$137,500 each. Farmington, NM. Please call 505-326-0145 with questions.



2016 Kubota Disc Mower, DM1024, \$8,900. 2016 Rankin tedder rake, SM300, \$3600. 2016 Massey Ferguson small square baler, MF1840, SOLD. This equipment has been used 4 seasons on small acreage. Can be sold by the piece or together. Springfield, OR. Tony 541-521-3898



Claas 455 Rollant Uni-wrap round baler wrapper. Kuhn FC4060TCD 13ft mower conditioner. Fella TS801, 25ft rotary hay rake. Big G 10ft off-set disk. Monosem NG 2 row 3 point planter. Brownsmead, OR, 503-454-8047

(3) New Holland Twin Balers. (2) 585 Balers with 15x22 shim kits. All in good condition. Buy both for package deal. **New Holland 1499 Swather**, 12ft roller bar reel and conditioner. Good shape. Parts machine and extra parts can be included. Malin, OR. 541-891-7448

1085 New Holland stacker, good rubber, newer clutch, handles 2 or 3 tie, \$38,500. Central, OR. 541-576-2367



**Missing Something?**  
Capital Press has what you're looking for and more!

Capital Press  
1-800-882-6789  
CapitalPress.com

**911 Hay Equip.**



Case IH SC414 center boom swather, 14ft wide, no conditioner, \$5000. Sandy, OR. 503-320-2847



Reese 2400 HL disc mower, 8ft wide cut, \$4000. Sandy, OR. 503-320-2847

New Holland 900 pull-type forage chopper. Early 80's model. Fair condition, works fine \$1,500. Aurora, OR. 503-706-6998



New Holland HW-340 self propelled rotary, 2800+ hours, 15' wide. Header updated, \$37,500. Call for details. Sisters, OR. 541-771-4970

**New Holland Model 1032 Stacker Liner.** Good Condition, \$4500. **New Holland Set of Twin Rakes**, hydraulic reels, complete with pull dolly. Good condition, \$3000 Benton City, WA. 509-845-7228

**Large Supply of Rebuilt New Holland Bale Wagons:** Also buying New Holland bale wagons. Sod Busters Sales, Polson, MT. 406-883-2118

**New And Used Parts:** for all models New Holland bale wagons. **Largest Inventory in North America.** Sod Busters Sales, Polson, MT. 877-735-2108 or 406-883-2118

#1 Balewagons: Buy, Sell, New Holland 2&3 wide self-propelled, pull-type models, parts, tires, manuals. Caldwell, ID. 208-880-2889 www.balewagon.com

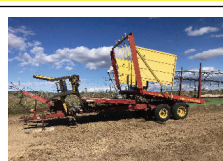


2016 Vermeer TM1400 Mower: 18' Cutting Width Excellent Condition. Low usage, \$32,000. Saint Paul, OR. 503-516-1727

New Holland self propelled bale wagon, Model 1046, Serial Number 6283. New drive sprocket, 2017 makes the pitch correct, \$4000. Glenwood, WA. 509-364-3407

**1118 New Holland Swather** 14ft header, diesel. Runs great. 1116 swather for parts \$4500/ all. **1283 New Holland** self propelled baler, 14x16 bale, 1425 for parts, \$3000/ both. **New Holland S1048** Bale Wagon, gas and manual transmission, \$7850. **New Holland twin hydraulic rakes**, model 258 and 260, has hydraulics to lift up and down, \$4500. **8580 Case IH Big Baler**, 4x4, \$4000. Arlington, OR. 541-980-4234

John Deere 945 Flail Conditioner Mower: all new rock guards, work horse, good condition, \$6750 OBO. Scio OR. 503-507-0359



New Holland 1036 Harrow Bed. Priced at \$17,000. Selah, WA. 509-388-8434

FREEMAN 370 Balers. (5) to choose from, Deutz and PTO/ hydro. 16x22. 3 string, \$5000 to \$9000. Christmas Valley, OR. 541-576-4292

**H-2A LABOR & HOUSING**  
H-2A Farm Labor & Housing available. Housing starts @ \$10/ day. Yakima - Hermiston Region. AgriLabor: "Labor Where you want it, When you want it!" 541-571-5989 AgriLaborInc.com

**RETIRING**

HAY EQUIPMENT:  
Hay Squeeze/ dozer 4x4 combo, diesel, on tires, \$18,500. Deutz Tedder, \$1,400. Ford Rollover PLOW, \$2,800. John Deere Land plane, \$3,700. Single Darf Rake, \$900. John Deere Seeder, \$800. Small Ripper. Disc. Packer. Klamath Falls, Oregon. John 541-892-1948

**911 Hay Equip.**

John Deere 5830 chopper: 7ft grass head, \$10,000. Cloverdale, OR. 503-812-6580

New Holland 1441 Swather: rubber roller. Field ready, \$4500. Cloverdale, OR. 503-812-6580

John Deere 2280 Swather: top shape, field ready with 300 Twin Knife, 12ft header, \$18,000. Madras, OR. 541-221-2358



Gehl Disc mower conditioner. Model 2345. 9 ft. cut. Good condition, \$5500. Molalla, OR. 503-829-8806

6450 Hesston Swather, Used Last Year. **Moving Sale, \$6500.** Silver Lake, OR. 541-580-6891

6610 Hesston Swather, 14ft, cab, A/C. It's set for 15 years, \$2000. Quincy, WA. 509-785-5461

**RCO Baits**  
Gophers • Squirrels  
Voles • Moles  
Ask for your Capital Press Discount  
Dealer Locator  
1-800-214-2248  
Harrisburg, OR 5219714-1

**PRESERVOR HAY TREATMENT**  
THE SHIELD OF IBA QUALITY AND VALUE

Available in Oregon & SW Washington from NW Animal Supply

- Combats Shattered Leaves
- Stop Heating & Mold
- Hay Moisture 15 to 30%
- Not Proprietary Acid
- Patented Potassium Sorbate Formula
- Will Not Rust Metal
- No Offensive Odor or Flavor

Find Product Info: **IBA-USA.com**  
**GEORGE SAUL**  
GASTON, OR  
**503-985-1001**

**911 Hay Equip.**

Freeman 370 Baler: Like new, only baled 27,000 bales, recent \$7,600 overhaul, new paint, hydro. \$20,000 OBO. Junction City, OR. 541-998-2429

**Mil-Stak 1030s:** clamp only, \$10,000. Hermiston, OR. 360-749-3080

**917 Orchard/ Vineyard Equip.**

2008 Littau Over the Row Harvester: 2500 hours, HD Power Heads, barrel conveyor, canopy, \$91,500. Portland, OR. 503-312-1538

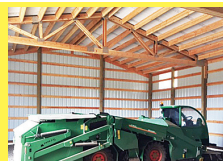
**HAZELNUT SHELLING LINE:** Scales, Jesse Crackers, Air Separation, Conveyors, Hand Inspection Tables, Bin Fillers, Averages 15,000 lbs per shift, In Shell Cracking, \$65,000. Salem, OR. 503-550-4165

**ALUMINUM BINS WITH TOPS:** 40" x 45" x 48" CLEAN - were used for storing hazelnut kernels. 95 bins available, \$225 per bin. Salem, OR. 503-550-4165

Steel Trellis Poles. New and Nearly new. Call for details. Pasco, WA. 509-539-8619



1999 Rears 500 gallon airblast sprayer. Overhauled 1 year ago at OVS. Field ready, \$12,500. Corvallis, OR. 541-740-9073

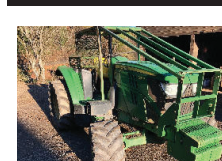


2016 Monchiero 20125 Hazelnut Harvester. 632 hours, well maintained. Very Good Condition, \$140,000. Corvallis, OR. 541-740-9073

Littau Diesel Berry Rotary Harvester, 1986. New cup belt and chains, new timing belt. Littau serviced 04/28/21. \$20,000. Sandy, OR. 907-232-2011

**911 Hay Equip.**

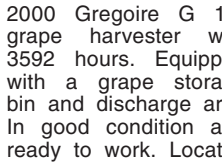
**917 Orchard/ Vineyard Equip.**



John Deere 6125 M Orchard Tractor, 1676 hours. Oversized tires and duals. Full set of weights, limb guard, 3 remotes. \$60,000. Forest Grove, OR. 503-201-1604



2000 Gregoire G 117 grape harvester with 3592 hours. Equipped with a grape storage bin and discharge arm. In good condition and ready to work. Located in Lake County California. Call 707-349-9101; clay@shannonridge.com



2015 Flory Sweeper: 57 Series, No cab, 7ft head, gas powered, brand new, 15 hours. Asking \$47,500 OBO. Salem, OR. 503-378-9179



2015 Flory Sweeper: 57 Series, No cab, 7ft head, gas powered, brand new, 15 hours. Asking \$47,500 OBO. Salem, OR. 503-378-9179

2018 John Deere 5055: 4WD with loader, bought new in 2019, 4000 hours. Good tractor, \$35,000. Tillamook, OR. 503-842-4088

**New Holland T8.275 Tractor with Duals.** Approximately 2750 hours; original owner. 1 pair Rr 500lb weights, 22 front weights with bracket. Cab suspension, Navigation 11 controls. Transmission 19/4 powerlifting; Forward HD suspended with DL; DEF system bypassed. Great condition. Chiloquin, OR. 509-961-9693

Attention: Wanted Kubota or John Deere, 4x4 compact tractor with loader/equipment. Carlton, OR. 503-550-0094

1991 John Deere 4955: mechanical front wheel drive, 3 remotes, front weight kit, \$35,000. Culver, OR. 541-410-4500



John Deere 7800 Tractor: Nice condition, 2WD, duals, quick hitch, 5600 hours, \$39,000. La Grande, OR. Text 541-786-2937. Call 541-421-3073



Mobile Tractor, agricultural equipment, and implement repair through Whitings Equipment. All makes and models for in field, emergency, and in shop repairs. Dealership level master technician now available without the dealership prices. Available 7 days/ week. Located in NW Oregon but will travel throughout Oregon and Washington. Salem, OR. 971-241-4062

**Branson TRACTORS**  
24 - 80 hp., 4WD, Compact Syncro-Shuttle, Hydro 24, 28, 35, 47 hp  
**THE TRACTOR STORE**  
(541) 342-5464  
5450 W. 11<sup>th</sup>, EUGENE, OR

**VISTA EQUIPMENT, INC.**  
2366 Resource Drive • Hazen, NV  
775-867-3900 • 775-741-0688



**McCormick MTX 150 MFWD**  
Low hrs, good cond.

**McCormick MTX 150 MFWD**  
Low hrs, good cond.

**TRACTORS**  
McCormick MTX 150-MFWD, 5000-6000 hrs. Cab, good cond (2) .....\$36,500 ea  
McCormick Super C, Restored.....\$4,500  
**HAY EQUIPMENT**  
Freeman 370T HYD Baler, STD chamber .....\$6,500  
NH 216 Rolabar rake .....\$5,500  
Overactive Air Seeder Type 812, Fair.....\$5,500  
NH 1048 Bale Wagon, Good.....\$8,500  
NH 2450 Windrower 14' with 2214 Head 2200hr.....\$14,500  
NH 88 - Chopper.....\$500  
Freeman 330 Self Propelled Baler .....\$3,200  
**MISCELLANEOUS**  
MF 6500 Forklift Mast, Good.....\$1,200  
16" JD Killefer Disc.....\$600  
16" Finish Disc.....\$1,500  
18' Eagerbeaver 10T Gooseneck .....\$1,650

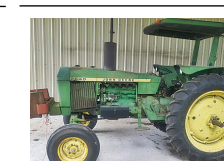
Or Come See Us At  
24175 Dayton Ave.  
Newberg, Oregon 97132

**920 Tractors**

2002 CASE IH STX450 Quad track, 30in tracks, easy pilot auto steer, \$90,000. Culver, OR. 541-410-4500

1977 John Deere 4430 Tractor, 125HP, \$16,500. Culver, OR. 541-410-4500

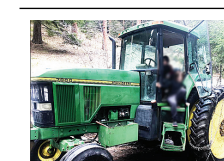
**John Deere 8400T:** new tracks and rollers, freshly rebuilt engine, lots of new parts, \$42,000 OBO. Turner, OR. 503-932-6080



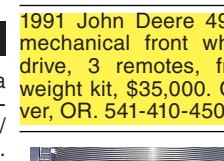
2640 John Deere: 75HP, 2 remotes, 3 point hitch, hour meter shows 4000 hours, \$13,500. Sandy, OR. 503-320-2847



CASE 1594 Tractor: Unknown working hours. Runs, drives, needs some brake work, \$8000 Yacolt, WA 360-263-4024



John Deere 7800: 2WD, front weights, 12,000 hours. Field ready, runs great. Recent transmission overhaul, \$23,500. Yakima, WA. 509-941-7132

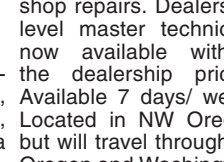


1993 John Deere 8770 Tractor: 18:4R42 triples. Synchronized, 4 remotes, no PTO. Serial Number RW8770H001478. Honest hours, 2nd owner. Leased out farm. No longer needed. Asking \$38,500 FOB. Buhl, ID. Day phone: 208-543-6319. Evenings; call or text 208-316-0054

2012 Frontier TM5118 18ft tandem disc, 11in spacing, \$42,500. Culver, OR. 541-410-4500



Byron 1514 Dump Chief, \$40,000.  
Ag Rain turbine drive traveler, \$10,000  
1991 EL-20 Pixall corn-stalker with Fargo dump box, \$40,000.  
2008 Wil-Rich V957 disc-ripper, \$12,000.  
1981 Case 4890 tractor, 7347 hours, \$10,000. Aumsville, OR. Call 503-551-1793



Rears 84ft Pendulum Boom. Almost Never Used. Excellent condition, \$5500. Gresham, OR. Tim 503-719-2545



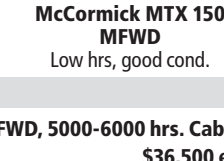
Northwest Tillers  
7ft. RB Series Box With Gauge Wheels, \$6,500. 11ft. D Series Inboard Vineyard Special With Rolling Basket, \$14,900. 12ft D Series, \$12,900 All In Excellent Condition Bend, OR. Call Scott 541-548-7185 See at: mtcsales.net



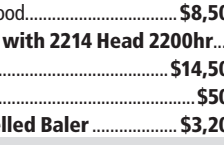
2001 Sterling Floater. Precision tank & boom, 90ft boom, 60in spacing, 1600 stainless steel tank, pilot control hydraulics, 5849 hours, 52,000 miles, PTO pump, CAT engine, Allison automatic transmission, great condition, \$25,000. Dixon, CA. 707-974-6384



**Spring Sale**  
CAT D6D 5X 717: 75% good under carriage, \$25,000. CAT D4 7U/ Dozer, \$5,500. **New Holland T6070 C&A**, 4WD, 1,400 hours & tanks, \$61,000. **International Harvester 656**, Hi-Crop cultivators, \$8,500. **Case 105N**, 4WD, 95% rubber/ 730 hours, \$28,000. **John Deere 9500** grain harvester , BO. **White 6700** air/ 6 row planter & extras, \$7,500. **Amco 20'**, wheel offset, 25-26" blades, \$14,000. **Case IH 780/ 16'** stubble Disc, 32" blades & 17' Roller Hydraulic, \$30,000. **Y&J 400 Ditcher**, \$4,500. **Wilcox 6** bottom flip plow, \$6,000. **35 Melon or Pumpkin** harvest trailers, call. **Ball 1000** gallon on Trailer/ nurse tank, \$5,500. **New Holland 2550 14'** Swather, new hydraulic pump, new conditioner, \$19,000. **8' x 30' aluminum main line** 330 sticks at \$35 per stick. **12" aluminum 30" gated pipe**, call. Acampo, CA. David 916-806-7431 or dave-taylor@sbcglobal.net



**New IA Subsoilers**  
26" Clearance  
3 Shank \$2,995  
5 Shank \$3,495  
7 Shank \$4,495  
Gauge Wheel Set, Add \$950.  
HD Subsoilers with Dual Gauge Wheels. Weight 4,500 to 5,500 lbs. 30" Clearance.  
7 Shank \$8,995.  
9 Shank \$9,995.  
11 Shank \$11,995.  
Bend, OR. 541-548-7185 mtcsales.net



**Rotary Cutter**  
2009, John Deere HX20 rotary cutter. Great condition. Chiloquin, OR. 509-961-9693

**920 Tractors**



John Deere 6125 M Orchard Tractor, 1676 hours. Oversized tires and duals. Full set of weights, limb guard, 3 remotes. \$60,000. Forest Grove, OR. 503-201-1604

(2) 1980 Case Tractors: 35HP, moving, \$8000/ both. Silver Lake, OR. 541-580-6891

John Deere 8850 4WD: excellent condition, 1 owner, new engine, low hours, excellent rubber, 3 point, \$59,500 OBO. Rickreall, OR. 503-930-1904



2009 New Holland H 8040 Series: 1693.2 hours, 16ft head mower, Conditioner. \$60,000 OBO. Valley, WA. 509-993-4128

**923 Farm Equipment**

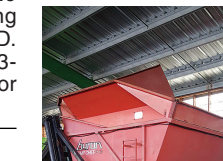
**TRESPASSERS WILL BE SHOT SURVIVORS WILL BE SHOT AGAIN**

Signs for Sale: 8.5"x11" Paper, weather protected. \$7.95, 2 or more, \$7.50 each. 503-266-1421; 833-684-1902

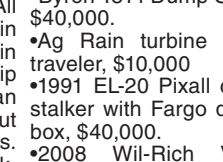
2008 Case IH 2588 hill-side combine with 15ft pick up header, 30ft draper header, \$90,000. Culver, OR. 541-410-4500

2016 Case IH 875 Ecolor Tiger, 16ft disc ripper, 12in spacing, 7 shank ripper, \$55,000. Culver, OR. 541-410-4500

2012 Frontier TM5118 18ft tandem disc, 11in spacing, \$42,500. Culver, OR. 541-410-4500



**NEW IA Rotary Mowers**  
6ft. 3 Point \$1,995  
7ft. 3 Point \$2,295  
10ft. 3 Point \$3,995  
12ft. 3 Point \$4,495  
Bend, OR. Call Scott 541-548-7185. Visit: mtcsales.net



**NEW IA Heavy Duty Off-set Wheel Discs.** Scraper kit, EZ adjust gang angle, split gang axles, 26" notched blades front and rear.  
12ft. \$14,700  
15ft. \$16,400  
18ft. \$18,400  
8ft.-22ft.  
8,000 lbs. **Introductory pricing. Order NOW!** Bend, OR. 541-548-7185 mtcsales.net



**NEW IA Tandem and Offset Wheel Discs.**  
7ft \$6,695  
8ft \$6,895  
9ft \$7,195  
10ft \$7,395  
11ft \$7,595  
12ft \$7,795  
13ft \$7,995  
Bend, OR. 541-548-7185 mtcsales.net



2001 Sterling Floater. Precision tank & boom, 90ft boom, 60in spacing, 1600 stainless steel tank, pilot control hydraulics, 5849 hours, 52,000 miles, PTO pump, CAT engine, Allison automatic transmission, great condition, \$25,000. Dixon, CA. 707-974-6384

