

Don't Miss Another Issue of Capital Press!

Stay up to date on the latest agricultural and natural resources news.

ANYTIME ANYWHERE

1 year \$55

2 years \$100

EZ Pay \$4 month



SUBSCRIBE TODAY!

Capital Press
EMPOWERING PRODUCERS OF FOOD & FIBER

1-800-781-3214
CapitalPress.com



1996 Ford LN7000 with mechanic's bed, 6500 LB. All hydraulic Auto Crane, 160 CFM Sullair Rotary screw air compressor, PTO Drive and Honda 3500 Watt Gen-set. Cummins 5.9 Diesel. Allison Auto transmission. PS, AC. 80,000 ACTUAL MILES. One owner truck from a large Southern California County. In near new condition, \$15,900. Located in Twin Falls Idaho. Call 208-613-0050



2001 Freightliner Transfer Dump Truck. 15 yard main with HiLift airgates on truck and trailer. CAT C12 Diesel. 410HP. 13 speed. Jake Brake, CC, AC, PW. 80% 11/22.5 radials on alloy wheels. This one owner truck is spotlessly clean and has been well maintained. NO RUST, NO DAMAGE. Runs drives and operates like new, \$34,900. Located in Twin Falls ID. Call 208-613-0050



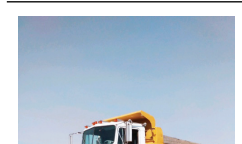
2002 IHC 4900 Cab & Chassis. DT466 Diesel. Allison 6 speed automatic, retarder. PS, AC, CC. 33,000 GVW. Will accept PTO and 16ft. to 18ft. bed. Good 11/22.5 radials. Formerly owned by California Dept. of Forestry and has been well maintained. Runs, looks and drives like new, \$13,900. Located in Twin Falls ID. Call 208-613-0050



2003 Freightliner FL70 Hot Shot Crew Truck. 300 HP Diesel. Allison 6 spd Auto Trans. Retarder, PS, AC, CC. Air Cond. and heat in 14 person crew box. Brand new 11/22.5 radial tires. Low Miles. This former State truck is as clean as a new one and is work ready. Needs nothing, \$19,900. Located in Twin Falls, ID. Call 208-613-0050



2005 IHC Paystar 5000i tandem dump truck. 14ft. Stainless Steel dump bed with 28in. live chain floor with removable conveyor cover and regular tailgate with metered gate discharge. Cummins ISX 435HP Diesel. Eaton 13 speed. PS, AC, CC, Jake. Brand new 11/22.5 radials. Bed alone is \$70K new. One owner former State truck that is in like new condition. Well maintained! \$36,900. Located in Twin Falls ID. Call 208-613-0050



1974 Kenworth: 318 Detroit, 10 speed, spring over walking beam, 80% rubber. Working everyday, \$7500 firm. Enterprise, OR. 541-263-0132



2008 Sterling 6X6, CAT C13 470HP, 10 speed, 20k GVW front end, Excellent condition, 40K miles, \$76,000. Gresham, OR. Tim 503-719-2545



2007 Chev 4500 Chipper Debris dump truck. 15 Ft. bed. 5.2 L Diesel. Auto. trans. 126K. ACTUAL MILES. NO CDL REQUIRED. AC, PS, CC. One owner truck with good rubber and maintenance. Very clean. \$19,900. Located in Twin Falls Id. Call 208-613-0050



1994 GMC TOPKICK with ALTEC AM855 62 FT. WH. manlift. 40,000 ACTUAL MILES. CAT 3126 DIESEL. Allison Automatic. PS, AC. Former city truck from the Los Angeles area. Well maintained and clean as new and operates, runs and drives like a new truck, \$19,900. Located in Twin Falls ID. Call 208-613-0050



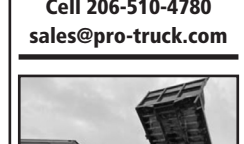
2006 Sterling side loader refuse truck with 26,000 ACTUAL MILES. AM-REP. AMOCASLTPO-19 body. Cummins ISL 8.9 L. with Allison Automatic. Backup and load cameras. 60K GVW. 385 and 315/22.5 like new radial tires. Exceptionally clean and well maintained truck from a City near Los Angeles. DOT current, and it is work ready, \$24,900. Located in Twin Falls ID. Call 208-613-0050



2000 IHC tandem axle dump truck. 15 yard bed. Cummins N-14 Diesel. Allison 6 speed automatic transmission. PS, AC, CC, PW, Jake Brake. Hendrickson suspension. 18,000 lb. front axle. Side lock rears. Electric load tarp. 94,000 ACTUAL MILES. 4859 HOURS. 80% 22.5 radials. Former State DOT truck that has been well maintained, is very clean, runs and drives like new and comes with service records since in service, \$39,900. Located in Twin Falls ID. Call 208-613-0050

IT'S SO EASY TO PLACE CAPITAL PRESS CLASSIFIED ADS... PHONE TOLL FREE 1-800-882-6789

Pro Truck
(253) 863-8782
Cell 206-510-4780
sales@pro-truck.com



2000 International 20' flatbed dump, DT466E 7.6L/250 Hp, Fuller 10- spd., OnBoard Diagnostics (ECM), 224" WB. \$18,950



2005 Transcraft 45' 2-axle flatbed trailer, air ride susp., alum. deck, road & curb side winches..... \$14,500

www.pro-truck.com
S244240-1
222 Truck/ Auto Parts & Accessories



2012 ProStar Plus tandem axle semi tractor. 240,000 ACTUAL MILES. MaxForce 13 Diesel. 450HP. 10 Speed Eaton. PS, AC, CC, PM. Jake brake. Traction control. Well maintained lease return that is very clean and work ready, \$19,900. Located in Twin Falls ID. Call 208-613-0050



1994 IHC 2674 with ALTEC AM855-F68, 75FT. WH manlift. DT 466 Diesel. 13 speed. PS, AC. Good 11/22.5 radials with 385/65/22.5 fronts. 60,000 GVW. 80,000 ACTUAL MILES. LOW HOURS. One owner Municipal Utility truck that has been well maintained and is work ready, \$29,000. Located in Twin Falls ID. Call 208-613-0050.



1990 IHC 2674 cab and chassis. NTC400 Eaton 8LL transmission, PS, AC, Jake brake. Front mount PTO pump with tank. Double frame. Hendrickson spring rears. G11/22.5 Radials. Former County truck that has been well maintained, is very clean and work ready, \$14,900. Located in Twin Falls ID. Call 208-613-0050



2009 Sterling Acterra with 10ft. dump bed, 3500 LB. Autocrane and arrowboard. 6.7 Cummins diesel, Allison AT. PS, AC, CC, PW. 23,000 GVW. 245/19.5 tires are like new. 50,495 ACTUAL MILES. One owner former large City vehicle that is in like new condition. Work ready, \$28,000. Located in Twin Falls ID. Call 208-613-0050



1999 IHC 4800, 4x4 with utility bed. DT 466 Diesel. Allison Automatic. HiLo transfer. PS, AC, CC. Near new 11/22.5 Radials. 104,000 ACTUAL MILES. Will take a 16 ft. bed. Well maintained truck from a large Southern California County and is spotlessly clean. Work ready, \$28,000. Located in Twin Falls ID. Call 208-613-0050



1997 IHC 2564 Water Truck. 2500 gallon, 2 heads; front and rear. Cummins M-11, 370HP. 13 speed. PS, AC, Side-locks. 64,750 GVW. Good 22.5 Radials. One owner former State vehicle that has been well maintained and is work ready, \$16,900. Located in Twin Falls ID. Call 208-613-0050



222 Truck/ Auto Parts & Accessories



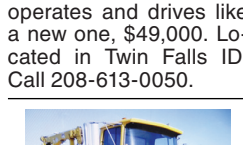
1983 International 4000 Gallon Water Truck. Cummins, Automatic, Front & Rear Sprayers, Runs Great, \$29,000. Tualatin, OR. 503-260-0303



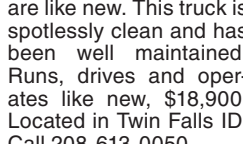
1996 IHC 4900 15ft. flat-bed truck with removable 4 ft. stake sides and 3000 Lb. liftgate. T444E, 7.3 L. Turgo Diesel with 5 and 2 trans. 103,000 ACTUAL MILES. Brand new radial tires. 26,000 GVW. NO CDL. One owner truck from Cal Fire. Clean, well maintained and operates like new, \$14,900. Located in Twin Falls ID. Call 208-613-0050



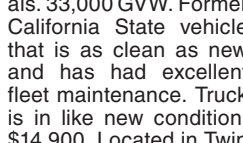
2007 Sterling 9500 with Grizzly 267C LOG LOADER. 2200 HOURS. 26,700Lb. lift capacity. 360 non continuous rotation. 44" grapple with 25ft. reach. 12.8L Diesel. 430HP. 8LL Eaton transmission, 64,000 GVW. 90% 11/22.5 radials. Truck came from the State of Arizona Power Authority and has had fantastic taxpayer maintenance. Truck looks, operates and drives like a new one, \$49,000. Located in Twin Falls ID. Call 208-613-0050.



1990 Ford LS8000 Mechanic's truck with 8600lb. 20ft. IMT 5016 crane, IMT DA435HA Hydraulic air compressor, 3 lube systems, 50 gallon fuel dispense. NEW FACTORY REMAN 7.8 L. Diesel. 13 speed. PS, AC. 11R/22.5 tires are like new. This truck is spotlessly clean and has been well maintained. Runs, drives and operates like new, \$18,900. Located in Twin Falls ID. Call 208-613-0050



2003 Freightliner FL70 cab and chassis. 330HP CAT 3126 Diesel. Allison 6 speed. AT with retarder and PTO capable. PS, AC. 16ft. of straight 11in. frame. Brand new radials. 33,000 GVW. Former California State vehicle that is as clean as new and has had excellent fleet maintenance. Truck is in like new condition, \$14,900. Located in Twin Falls ID. Call 208-613-0050



1982 IHC 1900 Dump Truck. 7 to 8 yard. 4x4. DT466 Diesel. Allison Automatic 2 speed transfer. 132,000 Actual Miles. Good rubber. One owner former Municipal truck. Runs and works like new, \$14,900. Located in Twin Falls ID. Call 208-613-0050

IF YOU HAVE A BEEF - sell it in next week's Capital Press!

222 Truck/ Auto Parts & Accessories

1-800-882-6789 Classified Line Ads Get Results - CapitalPress.com

R & G MACHINING AND ENGINE PARTS
COMPLETE DIESEL MACHINE SHOP AND TRUCK REPAIR
MULINO, OREGON • SHOP: 503-829-6038 • NATIONWIDE: 1-800-823-6038
We Absolutely, Positively Have The Best Remanufactured Engines Available Anywhere!
Huge Inventory • Expert Technical Assistance

REBUILT GAS L/B ENGINES		REBUILT DIESEL L/B ENGINES	
FORD	CHRYSLER & JEEP	CUMMINS	PERKINS & ISUZU
300.....\$1,595	3.8-3.9.....\$1,899	3.9-4BT.....\$4,150	Starting at.....\$5,995
4.6-5.4.....\$2,895	4.0-4.2.....\$1,895	5.9'88-'02.....\$4,250	
302-351-400.....\$1,895	318-360.....\$1,899	5.9'03 & up.....\$4,650	MITSUBISHI & NISSAN
415-V10.....\$3,295	488 V10.....\$3,395	6.7 C/R.....\$4,950	Starting at.....\$5,995
460 '72-'92.....\$1,899			YANMAR & KUBOTA
	TOYOTA		Starting at.....\$4,495
	22RE.....\$1,395		BOBCAT & SHIBAURA
	All years & models.		Starting at.....\$3,995
	Turbos, Injectors, High		DOOSAN & TAKEUCHI
	Pressure Oil Pumps, Fuel		Starting at.....\$5,995
	Injection Pumps, Oil Coolers,		MERCEDES
	Computers -		Starting at.....\$8,995
	Ford, GM, Dodge.		HINO & IVECO
			Starting at.....\$5,995
			CATERPILLAR & HYUNDAI
			Starting at.....\$5,995

IN BUSINESS SINCE 1975.
OVER 250 ENGINES & 450 CYLINDER HEADS IN STOCK!
We have a complete line of import diesels and obsolete diesels for your mini excavators or skidsteers. We work and repair all brands!
NEED ENGINE PARTS, GAS OR DIESEL - CHECK IT OUT:
WWW.EBAY.COM/STR/GRUMPSPERFORMANCECENTER
GRUMPSPERFORMANCE@GMAIL.COM

LOVELL Truck Sales 50th ANNIVERSARY

1-800-451-0012
(503) 266-5886 • FAX (503) 266-6903
LOVELLTRUCKSALES.COM
680 SW 1st Ave (Hwy 99 E) • Canby, OR

POWER FLEET & COMMERCIAL SALES MEDIUM DUTY DEALER

CHEVROLET BUSINESS ELITE **POWER FLEET - COMMERCIAL** **CHEVROLET BUSINESS ELITE**

WWW.POWERAUTOGROUP.COM
503-769-7100

ARMY TRUCKS

4x4 & 6x6
COMPLETE PARTS INVENTORY
MEMPHIS EQUIPMENT
901-774-0600 (TN)
www.memphisequipment.com
THE NATION'S LARGEST ARMY TRUCK DEALER

BUMPERS

Replace your light-duty factory bumper for an added measure of safety and protection.

- Powder coated
- All steel
- Colors available
- Working lights
- Winches available

Call Today
Dean 541-419-4170
Shop 541-447-4555
www.prolinefab.com
1440 SW Tom McCall Road • Prineville, OR
dean@prolinefab.com

PRO-LINE FABRICATION