

899 Heavy & Indust. Eq.



FOR SALE! 1984 truck pup trailer, \$6,500. Clinton, WA. 360-941-8495



John Deere 350D LC Excavator: Hydraulic Coupler. Dig bucket. Asking \$44,950. Delivery Available. Sandy, OR. Call Pepe: 503-544-3232; Call Pat: 503-407-9062



2003 Hitachi ZX230LC Excavator: Aux Hydraulics, Hydraulic Thumb, Hydraulic Quick Connect. Dig Bucket, 9300 hours. Asking \$59,950. Sandy, OR. Call Pepe: 503-544-3232; Call Pat: 503-407-9062



2010 Case Super M Series III Backhoe: 4x4, 3200 Hours, Extend-A-Hoe. Two Dig Buckets, Forks. Asking \$39,950. Sandy, OR. Call Pepe: 503-544-3232; Call Pat: 503-407-9062



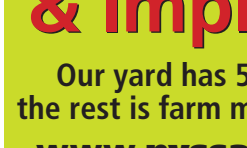
John Deere 310SE Backhoe: 8200 Hours, Extend-A-Hoe, 4x4, 4 in 1 Loader Bucket. Enclosed Cab. Asking \$27,500. Sandy, OR. Call Pepe: 503-544-3232; Call Pat: 503-407-9062



D8H Dozer: 46A Direct Electric. Runs strong. Video Available. \$23,800. The Dalles, OR. 800-748-8061

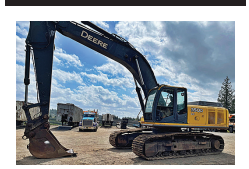


WAGNER Compactor: WC - 17 Low Hours New Batteries. Video Available. \$9800. The Dalles, OR. 800-748-8061



902 Farm Equip. Parts

899 Heavy & Indust. Eq.



John Deere 350D LC Excavator: Hydraulic Coupler. Dig bucket. Asking \$44,950. Delivery Available. Sandy, OR. Call Pepe: 503-544-3232; Call Pat: 503-407-9062

REPLACEMENT DECAL SETS

Construction, Forestry & Ag Equipment. Fast, Knowledgeable, Reliable Service. 215-536-5339 email: info@CustomServicesCompany.com Thousands of sets, Old & New, in our digital inventory. www.QuipCal.com



1999 John Deere 410E Backhoe: 2900 hours, hay fork. Good condition, \$22,000. Juntura, OR. 541-604-5187



John Deere 310SE Backhoe: 8200 Hours, Extend-A-Hoe, 4x4, 4 in 1 Loader Bucket. Enclosed Cab. Asking \$27,500. Sandy, OR. Call Pepe: 503-544-3232; Call Pat: 503-407-9062

CASE INDUSTRIAL PARTS

We sell genuine, after market, and used CASE parts at discount prices nationwide. Call For Free Catalog.



Hydraulic Power Unit 3 phase electric motor. Driven pumps with manifold and valves. Self contained on skid with power panel, additional new pumps and motors and valves to go with. Salem, OR. 503-910-4010

USED NURSERY CONTAINERS:

Used, but reusable nursery containers. All sizes. Inventory changes daily. Call for current availability and prices. Sawyer Farms, Scio OR. 503-769-3417, juddsfarm@vwi.com (also wanted: used containers)

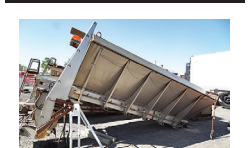
907 Nursery Equip. & Supplies

907 Nursery Equip. & Supplies

907 Nursery Equip. & Supplies

FRESH SAWDUST: Consistently fair pricing. 9 Unit Loads Now Available Forest-Grove, OR. For pricing call 503-849-0216

908 Garden, Turf, Yard Equip.



2004 Swenson Stainless Steel sand and compost distribution bed. 13ft. Complete with control box. Worked fine when taken out of service this year. Excellent condition and is ready to mount and go to work, \$4500. Located in Twin Falls ID. Call 208-613-0050

911 Hay Equip.

Freeman 370 Baler: Like new, only baled 27,000 bales, recent \$7,600 overhaul, new paint, hydro. \$20,000 OBO. Junction City, OR. 541-998-2429

New Holland 16 HS Header. Very Good Condition. Rubber rollers and extra parts. Sprague, WA. 509-257-2413

New Holland 216 V rake. Field ready, \$8000. Tenino, WA. 360-481-6449

Hayrite Hay Elevator: 16ft. Heavy duty, Marathon 3/4HP, used once, \$900 OBO. Estacada, OR. 503-807-6455

2018 John Deere 328 Square Baler: bale turner ramp. Bought new in 2019. Good Baler, \$21,000 OBO. Tillamook, OR. 503-842-4088

(3) New Holland Twine Balers. (2) 585 Balers with 15x22 shim kits. All in good condition. Buy both for package deal. **New Holland 1499 Swather**, 12ft roller bar reel and conditioner. Good shape. Parts machine and extra parts can be included. Malin, OR. 541-891-7448



Case IH SC414 center boom swather, 14ft wide, no conditioner, \$5000. Sandy, OR. 503-320-2847

"I get great results with Capital Press...and I have for over 20 years." Mark, Pro Truck Call 1-800-882-6789 to advertise.

907 Nursery Equip. & Supplies

907 Nursery Equip. & Supplies

911 Hay Equip.

1085 New Holland stacker, good rubber, newer clutch, handles 2 or 3 tie, \$38,500. Central, OR. 541-576-2367



Reese 2400 HL disc mower, 8ft wide cut, \$4000. Sandy, OR. 503-320-2847



New Holland HW-340 self propelled rotary, 2800+ hours, 15'5" wide. Header updated, \$37,500. Call for details. Sisters, OR. 541-771-4970

New Holland Model 1032 Stacker Liner. Good Condition, \$4500. **New Holland Set of Twin Rakes**, hydraulic reels, complete with pull dolly. Good condition, \$3000 Benton City, WA. 509-845-7228

New And Used Parts: for all models New Holland bale wagons. **Largest Inventory in North America.** Sod Busters Sales, Polson, MT. 877-735-2108 or 406-883-2118

#1 Balewagons: Buy, Sell, New Holland 2&3 wide self-propelled, pull-type models, parts, tires, manuals. Caldwell, ID. 208-880-2889 www.balewagon.com

907 Nursery Equip. & Supplies

907 Nursery Equip. & Supplies

911 Hay Equip.

Large Supply of Rebuilt New Holland Bale Wagons: Also buying New Holland bale wagons. Sod Busters Sales, Polson, MT. 406-883-2118



2016 Vermeer TM1400 Mower: 18' Cutting Width Excellent Condition. Low usage, \$32,000. Saint Paul, OR. 503-516-1727



Claas 455 Rollant Uni-wrap round baler wrapper. Kuhn FC4060TCD 13ft mower conditioner. Fella TS801, 25ft rotary hay rake. Big G 10ft off-set disk. Monosem NG 2 row 3 point planter. Brownsmead, OR. 503-454-8047

1118 New Holland Swather 14ft header, diesel. Runs great. 1116 swather for parts \$4500/ all. **1283 New Holland** self propelled baler, 14x16 bale, 1425 for parts, \$3000/ both. **New Holland S1048** Bale Wagon, gas and manual transmission, \$7850. **New Holland twin hydraulic rakes**, model 258 and 260, has hydraulics to lift up and down, \$4500. **8580 Case IH Big Baler**, 4x4, \$4000. Arlington, OR. 541-980-4234

2016 Kubota Disc Mower, DM1024, \$8,900. 2016 Rankin tedder rake, SM300, \$3600. 2016 Massey Ferguson small square baler, MF1840, SOLD. This equipment has been used 4 seasons on small acreage. Can be sold by the piece or together. Springfield, OR. Tony 541-521-3898

FREEMAN 370 Balers. (5) to choose from, Deutz and PTO/ hydro. 16x22, 3 string, \$5000 to \$9000. Christmas Valley, OR. 541-576-4292

907 Nursery Equip. & Supplies

907 Nursery Equip. & Supplies

911 Hay Equip.

New Holland self propelled bale wagon, Model 1046, Serial Number 6283. New drive sprocket, 2017 makes the pitch correct, \$4000. Glenwood, WA. 509-364-3407

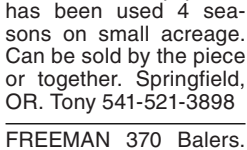
John Deere 945 Flail Conditioner Mower : all new rock guards, work horse, good condition, \$6750 OBO. Scio OR. 503-507-0359



New Holland 1036 Harrow Bed. Priced at \$17,000. Selah, WA. 509-388-8434



2020 Massey Ferguson rotary swathers. 2 units available; 540 hours and 551 hours, \$137,500 each. Farmington, NM. Please call 505-326-0145 with questions.



John Deere 2280 Swather: top shape, field ready with 300 Twin Knife, 12ft header, \$18,000. Madras, OR. 541-221-2358

907 Nursery Equip. & Supplies

907 Nursery Equip. & Supplies

911 Hay Equip.

John Deere 5830 chopper: 7ft grass head, \$10,000. Cloverdale, OR. 503-812-6580

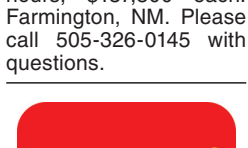
New Holland 1441 Swather: rubber roller. Field ready, \$4500. Cloverdale, OR. 503-812-6580

H-2A LABOR & HOUSING

H-2A Farm Labor & Housing available. Housing starts @ \$10/day. Yakima - Hermiston Region. **AgriLabor** - "Labor Where you want it! When you want it!" 541-571-5989 AgriLaborInc.com

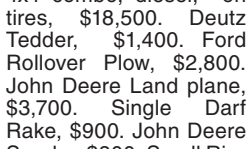


2008 Littau Over the Row Harvester: 2500 hours, HD Power Heads, barrel conveyor, canopy, \$91,500. Portland, OR. 503-312-1538

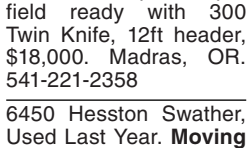


2020 Massey Ferguson rotary swathers. 2 units available; 540 hours and 551 hours, \$137,500 each. Farmington, NM. Please call 505-326-0145 with questions.

917 Orchard/Vineyard Equip.



1999 Rears 500 gallon airblast sprayer. Overhauled 1 year ago at OVS. Field ready, \$12,500. Corvallis, OR. 541-740-9073



2016 Monchiero 20125 Hazelnut Harvester. 632 hours, well maintained. Very Good Condition, \$140,000. Corvallis, OR. 541-740-9073



John Deere 6125 M Orchard Tractor, 1676 hours. Oversized tires and duals. Full set of weights, limb guard, 3 remotes. \$60,000. Forest Grove, OR. 503-201-1604



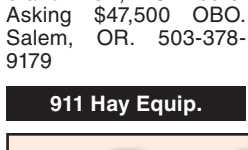
4000 plastic berry flats. New and used, \$2.00 each. FOB. Monroe, WA. 360-794-8125



1996 Littau harvester, side row, wide tunnel, Christy power heads, aluminum tube, 3/8" rods, set up for raspberries/ blueberries, \$39,000. Brooks, OR. 503-991-6753

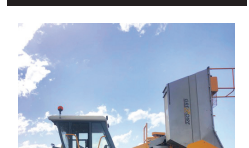


2015 Flory Sweeper: 57 Series, No cab, 7ft head, gas powered, brand new, 15 hours. Asking \$47,500 OBO. Salem, OR. 503-378-9179



2014 McHale F5000 fixed chamber round baler, 18,000 bales, drop floor, heavy-duty rollers. \$32,500 **Find lots more equipment at: www.TJEquipmentLLC.com**

917 Orchard/Vineyard Equip.



2008 Gregoire G 117 grape harvester with 3592 hours. Equipped with a grape storage bin and discharge arm. In good condition and ready to work. Located in Lake County California. Call 707-350-3211

2008 Littau Over the Row Harvester: 2500 hours, HD Power Heads, barrel conveyor, canopy, \$91,500. Portland, OR. 503-312-1538

HAZELNUT SHELLING LINE: Scales, Jesse Crackers, Air Separation, Conveyors, Hand Inspection Tables, Bin Fillers, Averages 15,000 lbs per shift, in Shell Cracking, \$65,000. Salem, OR. 503-550-4165

ALUMINUM BINS WITH TOPS: 40" x 45" x 48" CLEAN - were used for storing hazelnut kernels. 95 bins available, \$225 per bin. Salem, OR. 503-550-4165

Steel Trellis Poles. New and Nearly new. Call for details. Pasco, WA. 509-539-8619



1999 Rears 500 gallon airblast sprayer. Overhauled 1 year ago at OVS. Field ready, \$12,500. Corvallis, OR. 541-740-9073



2016 Monchiero 20125 Hazelnut Harvester. 632 hours, well maintained. Very Good Condition, \$140,000. Corvallis, OR. 541-740-9073



John Deere 6125 M Orchard Tractor, 1676 hours. Oversized tires and duals. Full set of weights, limb guard, 3 remotes. \$60,000. Forest Grove, OR. 503-201-1604



4000 plastic berry flats. New and used, \$2.00 each. FOB. Monroe, WA. 360-794-8125



1996 Littau harvester, side row, wide tunnel, Christy power heads, aluminum tube, 3/8" rods, set up for raspberries/ blueberries, \$39,000. Brooks, OR. 503-991-6753



2015 Flory Sweeper: 57 Series, No cab, 7ft head, gas powered, brand new, 15 hours. Asking \$47,500 OBO. Salem, OR. 503-378-9179



2014 McHale F5000 fixed chamber round baler, 18,000 bales, drop floor, heavy-duty rollers. \$32,500 **Find lots more equipment at: www.TJEquipmentLLC.com**

Nyssa Tractor & Implement
Our yard has 5 miles of road, the rest is farm machinery & parts.
www.nyssatractor.com
Toll Free (833) 372-4020
Nyssa, OR

BIG TRACTOR PARTS, INC.
~ GEARED FOR THE FUTURE ~
STEIGER TRACTOR SPECIALIST
1. We are your source for new & used Steiger drivetrain parts Series 1-9300 Series.
2. We rebuild Spicer manual transmissions, Fugi power shift transmissions, dropboxes & axle with ONE YEAR WARRANTY!
3. We now rebuild computer control boxes for Steiger tractors 1982-1999.
800-982-1769
www.bigtractorparts.com

907 Nursery Equip. & Supplies

907 Nursery Equip. & Supplies

SPRAYING & HYDRAULICS
Large in-stock inventory of the best brands in the business!
Cylinders * Controllers * Filters * Fittings * Hoses
Motors * Pumps * Seals * Spray Tips * Valves
GK MACHINE * WWW.GKMACHINE.COM * 503-678-5525

GK SPREAD PRO - 700 lbs. capacity!
Stainless Steel Frame!
Easily attaches to your existing ATV, UTV or tractor!
Choose from hydraulic, electric or manual controller!
The NEW GK Spread Pro works with a variety of fertilizers for efficient spreading
GK MACHINE, INC. * WWW.GKMACHINE.COM * 503-678-5525

For all your FARM & HAY Equipment needs!
SINCE 1889
We have NEW & USED Balers, Mowers, Rakes, & Tedders!
FISCHER MILL SUPPLY, INC.
EST. 1889
(503) 631-3411
www.fischermillsupply.com