

805 Farm Buildings
1-800-882-6789
CapitalPress.com

COUNTRY VALUES. BIG CITY RESULTS.
Ag in the west news delivered in print or online.

- Newspaper
- E-editions
- E-newsletters
- Mobile
- Website

Subscribe Today.
1-800-781-3214
Capital Press
1-800-882-6789
CapitalPress.com

805 Farm Buildings
A building that will last a lifetime. Quonset Hut, 24ftx6ft wide. 30ft long, 12ft high. Never assembled, \$12,000 OBO. Delivery Available. Goldendale, WA. 509-773-5598



New Never Erected, 52'x144'x28' Steel Building. Building manufactured in May 2019 by PBS Buildings in Woodburn, OR. Building meets all city of Portland codes and is designed to accept a 10 ton bridge crane. For Financial reasons the project was canceled. Building and engineering costs were \$130,000. Will sell for \$94,000 Firm. Full approval drawings available on request. Portland, OR. Call Algird. 503-799-0184

807 Fuel, Heating & Firewood
Large Quantities Fir, Oak and Maple Logs for commercial firewood operator. Some down 1 year. Available all year and for multiple years. South Salem and East of Corvallis, OR. 503-838-3779

Capital Press Ag Weekly
It works!

"I'm amazed by the number of people that see it (my Capital Press ad). For me, it's consistent. It's working."
R.K. of Oregon

Capital Press
800-882-6789
CapitalPress.com

822 Nursey Stock - Plants

Blue Ribbon

The Early Season Just Got More Flavorful.

FALL CREEK FARM & NURSERY, INC.
1.800.538.3001 | www.fallcreeknursery.com

819 Sporting Goods /Hunting
Eastern Oregon Big Game Hunts on private land. Tag application deadline May 15th. Call for details. 503-351-4412



821 Christmas Trees
We have 2 Holland Mechanical Transplanters. We use them to plant Christmas tree seedlings, \$2500 for each. Salem, OR. 503-587-9543



822 Nursey Stock - Plants
Hazelnut Trees: McDonald, Jefferson, Yamhill, Wepster, York, Eta, Theta, Felix. Dayton, OR. 503-864-4422

HAZELNUT TREES ALLUVIAL ACRES NURSERY
Polly-O, Yamhill, Mcdonald, Wepster, Jefferson, Pollenizers.
Scio, OR 503-508-4684

Hazelnut Trees: Sacajawea, Doris, 5 years old, \$6-\$8. Blueberries: Duke, Legacy: 4 year old plants, \$2.50 each. Crabtree, OR. 503-871-9114

EMERALD GREEN ARBORVITAE: rooted cuttings and 2-1/4", liners available. Forest Grove, OR. Call 503-359-7540

Blueberry 20+ Varieties, Raspberry, Marion, Boyesen, Currant, Grape, Kiwi, Strawberry Plants. Canby, OR. 541-543-7566
www.canby.com/morningshade

CLASSIFIED LINE ADS GET RESULTS
1-800-882-6789
CapitalPress.com

824 Seed
ALFALFA SEED: VER-NEMA: Raw Seed: \$1.85/lb. Inoculated: \$1.91/lb. WSDA Certified, 2020 production. VNS: Raw Seed: \$1.75/lb. All good winter hardness/ 95% germ.
msbuckleyfarms.com
Walla Walla, WA. 509-520-2229

Pasture Seed \$1.20/lb. Lawn Seed \$1.20/lb. Wheat Straw \$120/ton. Grass Hay \$180/ton. Wheat \$6/bag. Rickreall, OR. 503-623-6922

Quality VNS Alfalfa Seed: \$2.00/lb. Touchet, WA. Chris Kregger 509-394-2400

Summer COVER CROPS Piper Sudan, Cowpeas, Buckwheat. Albany, OR. Text/ Call: 541-905-2111

825 Fertilizer & Soil Amendments

•Bulk Chicken Manure
•Bulk Chicken Litter
•Delivery Services
For pricing and freight quotes call 541-926-1829 or e-mail: paulh@potentgrow.com

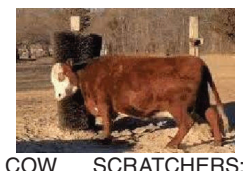
Dairy manure compost, turned windrows, Organic Valley Coop milk producer, \$50. Trout Lake, WA. 509-237-0034

826 Organic
900 Bales of Organic Haylage: good quality, \$55/ bale. Scio, OR. 503-932-1005

Certified Organic Haylage: 1st and 3rd cutting, 200 Big Round bales, \$50/ bale. Bulk discount. Carnation, WA. 303-817-4588

828 Misc for Sale
Open top 55 gallon metal drums. Food grade, \$20 each OBO. Cornelius, OR. Jeff 503-341-4289

869 Livestock Equip. & Supplies



COW SCRATCHERS: CALL NOW TO ORDER YOURS. LIMITED STOCK. PRICES ARE: 1-\$145 EACH 2-\$135 EACH 3-\$125 EACH THESE ARE 4 FOOT TALL ABOUT 2FT WIDE 8.5 INCH. HOLE FOR YOUR POST TO SLIDE THROUGH. Turner, OR. 503-999-6013

Feed Mixer
Diamond Ind. 670-T vertical, twin screw feed mixer. New spare tire included. Chiloquin, OR. 509-961-9693

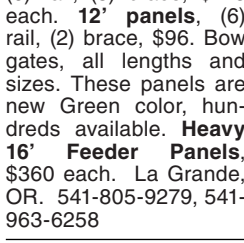


New IA Portable Hay Feeder:
•8 hole wheels
•Swing up tongue
•Inner bunk
•35 stations
\$4,995
2 or more \$4,795 each.
Bend, OR. 541-548-7185
mtcsales.net



Powder River Chute with tail gate, 2 sections of alley and 2 bows, \$3,500. Loomis, WA. 509-223-3010

869 Livestock Equip. & Supplies
Livestock Panels: 16' (6) rail, (3) brace, \$128 each. 12' panels, (6) rail, (2) brace, \$96. Bow gates, all lengths and sizes. These panels are new Green color, hundreds available. Heavy 16' Feeder Panels, \$360 each. La Grande, OR. 541-805-9279, 541-963-6258



Electric Scales 10'2" wide x 16' long. Ideal as axle scales for large trucks or livestock. All components included, \$3500. Meridian, ID. 208-888-1376

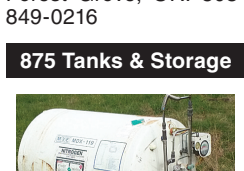
872 Dairy Eq. & Supplies
Polydome Calf Nursery: Hutches available for various climates. Western Polydome, Inc. Monroe, WA. 800-822-5837

Stainless Steel Pipe: Approximately 100ft. of 1 1/2" and 200ft. of 2" stainless steel 304. Want to sell altogether, \$1500. 2 stainless floweritters. Price to be determined. Klamath Falls, OR. 541-892-3618

Germania Milking Parlor: rapid exit, 12 per side, gates, take offs, backflush, \$10,000. Cloverdale, OR. 503-812-6580

Kiln Dried Shavings: Smaller truck loads now available. Hogfuel also available. Call for details. Forest Grove, OR. 503-849-0216

875 Tanks & Storage
MVE MDX-119: Nitrogen storage tank. Good condition. Make offer. Tillamook, OR. 503-801-1957



Used single wall tanks 1500 & 2000 gallons. New 1000, 2000, 3000 and 4000, etc. gallon double walled tanks. Salem, OR. Peter 503-881-9803

878 Generators
Mobile solar unit with 24 solar panels like new \$12,500. Prineville, OR. Jeff 503-209-5852



NEW IA Pivot Track Closer. Heavy Duty with adjustable cone discs. From 60" to 12" closing width. Hydraulic Depth Control water fill roller packer, \$5,495. Bend, OR. 541-548-7185
mtcsales.net

(37) Used Pivots: New listings coming. Engines, pumps. Garden Valley, ID. Call Mike at 208-420-1480, or see www.pivotsplus.com

For Sale: 3/4 hp 10 gallon per minute. Single phase 230v Franklin pump. 100' deep, set schedule 120 pipe, 100' #12 sub flat cable. Went up in hp, in well 13 months, \$1,000. Woodburn, OR. 503-339-5532

250 KW Genset. CAT Diesel. Very low hours. Like new condition. 120-480 Volt. 1 and 3 phase. Skid mount. Ready to install and put to work, \$13,900. Located in Twin Falls ID. 208-613-0050

881 Shop Equip. & Tools
Paint Booth. Door opening: 9' high. Door width: 10'. Inside width is 16'. Inside length is 24'. Fire suppression system, \$6500. Eugene, OR. For more information call John Lucas 541-968-2239.

Welding and Machine Shop Equipment. Miscellaneous vehicles and tools. Dundee, OR. 503-505-2312

Attention: Builders, Contractors, Repair Shops. Nuts, bolts, hardware, metal to wood fasteners, beam hangers, bearings, seals, etc. Shady Cove, OR. 541-878-2661

887 Irrigation Equip.
WHEELINES FOR SALE 5' wheels x 1,800'. Levellers, sprinklers, travelers. 4 with working motors, \$6,000 each. 1 with non-working motor, \$4,000. Fields, OR. Call 503-799-2677

PLACE LINE CLASSIFIED ADS TOLL-FREE FROM ANYWHERE!
1-800-882-6789

887 Irrigation Equip.
Wade 2000 + feet of 5" main line. 440ft of 4" pipe with sprinkler heads. 150 Nelson big gun on tripod. High pressure irrigation pump, 30HP, pipe trailer, miscellaneous fittings, \$6000/ all. Chehalis, WA. 360-520-5494

Mitchell VFD, 25HP Turban Pump, \$25,000. Sunnyside, WA. 509-728-2729

Pivots: All brands. No rust. Fully buried wire. Call Keizer, OR. Cell 503-881-3232

Wade Rain 1/4 mile-Wheel Lines. Some 5 foot wheels & some 7 foot wheels. Forest Grove, OR. 503-310-2524



REFURBISHED PUMPS AT A FRACTION OF THE COST OF NEW. (6) Cornell Marathon Electric, 15 to 75hp, 1760-3500 RPM's; (3) Berkeley Baldor Industrial Motor, 7.5 to 15hp, 3450 RPM's. Meridian, ID. 208-888-1376

30 pieces 3"x40" Moore Rain with sprinklers, \$2/foot OBO. 6"x30" Wade Rain Main line: 100 pieces, sold/ foot. Cornelius, OR. Call Jeff 503-341-4289



Deutz/Cornell Pump-Set (NOS):
•2014 Deutz D914L06, s/n 8898824, 116 HP @ 2300 rpm
•2019 Cornell 4RBEM16-3, s/n 236324, 12.75" Impeller (full)
•OID 200 Gal. Diesel Fuel Trailer, 3/16" Construction, Baffles, 6K Dexter Axle
•Clemons 1200A Galv. Pres. Filter, 3/32" SS Screen, Pressure Fine Filter
•Protek DP-7 Primer Pump, 7" Hand Primer, plumbed
•Racor 445R60 30 Micron, Fuel/Water Separator, plumbed
•Loft EP-250 G7 Safety Panel, 7 Gauge Panel, 1st fault LED indication, Asking Price: \$32,865. Oregon-Idaho Diesel. Nyssa, OR. Contact Steve: 208-739-2246

889 Heavy & Indust. Eq.
1998 Gorman Rupp 6 in. self priming waste and irrigation pump. Trailer mount. 432 ACTUAL HOURS. 4 cylinder. Deutz Diesel. Former City machine in like new condition, \$9900. Located in Twin Falls ID. Call 208-613-0050

890 Packing/ Processing Eq.
WANTED: chicken egg washing machine, old or needs work is OK. Do you have one gathering dust in the barn? Salem, OR. 503-504-9245

Used Super Sacks. Used once. Stovepipe Top: \$2. Opened Top: \$3. Salem, OR. 503-932-8598

887 Irrigation Equip.
Frost Protection
H₂O Pipe & Supply
Authorized Factory Dealer of Orchard-Rite® Wind Machines
598 Baseline
Cornelius, OR
Office: 503-357-4217
info@hpspipe.com

WaterTec
G4 90-380
Hose Reel
Galvanized frame
Hose length 1250 ft
Komert sprinkler included
\$23 990.00
Free Freight in Washington or Oregon!
360.393.4923
watertecna.com

WATER MASTER SERIES AND EVERGREEN
SUPERIOR SERVICE & DESIGN
• All your needs for irrigation parts service
• We build custom equipment for your special needs
• Hose replacements & fusion repairs
• Transport Tanks • Rental Returns & Used Equipment
• Structural and steel available for purchase

VALLEY WORKMAN
Truck Equipment
• Full Service
• Alterations
• Dump Bodies • Hoists
• Farmbeds • Flatbeds

VALLEY FAB
CORP
10910 Portland Rd. NE • Brooks, OR
Call: 503-792-3739 • Fax: 503-792-3738

899 Heavy & Indust. Eq.
899 Heavy & Indust. Eq.
PLACE LINE CLASSIFIED ADS TOLL-FREE FROM ANYWHERE!
1-800-882-6789

RIVERBROOK
FARM • HAULING SERVICE
Brooks, OR

WE HAUL!
• Building Supplies • Farm Equipment
• Construction Equipment • Heavy Equipment
• Granular Fertilizer • Grain/Wheat

888-393-1819 • www.riverbrooktrucking.com

887 Irrigation Equip.
350- 3"x40" hand lines, 3ft and 4ft risers. \$75/ each. Prineville, OR. 541-480-9356

468 Nelson 1/2in 20-O4 impact sprinklers with 9/64in nozzles, \$6 each. Saint Paul, OR. 503-932-8871

Used Irrigation Pipe: (50) 2" Wade sprinkler pipe, (100) 3" Wade sprinkler pipe, Miscellaneous main line, \$1/ foot for any. Burns, OR. 541-979-4124



Water Hauling Trailer for large acreage spraying, 6000 gallon, hydraulic driven pump, heater unit for winter use. Insulated stainless steel, 2 compartments. \$9,000. Meridian, ID. 208-888-1376



580 Case Backhoe: Super M. One owner. Ride control, 4WD, 4-in-1 front bucket, all buckets for back, ripper, mechanical thumb, A/C, decent rubber, \$40,000. Payette, ID. 541-403-4182

P&H Hydraulic Excavator. Operational condition, 60,000lbs. \$8000. Payette, ID. 541-403-4182

Compactors: 4'x4', \$5000. 5'x5', \$7500. Salem, OR. 503-559-3186

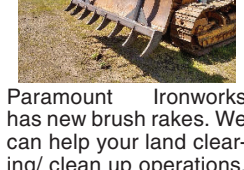
Jaw Crusher Plant 32"x42". With a separate 32"x42" apron feeder. Both are portable with heavy duty hydraulic legs. Good tires, \$150,000. Oregon. 541-954-4808

D7G Cat Special Application. Hydraulic connections, good under carriage, new clutches, batteries, glass, lights, & heater. All serviced & ready to work, \$33,500. Condon, OR. Call or text 503-351-4412

1985 General with 16' rough dump box setup for 5th wheel BC350-400 13 speed SQHD on spring Aluminum wheels good tires, straight cab Perfect farm truck, water truck, on site dump truck LOW MILES, \$11,500. Sherwood, OR. 503-880-2454

Hitachi 120-5 Excavator: Hydraulic Thumb, Hydraulic Coupler. Dig and Clean Up Buckets. Asking \$39,950. Sandy, OR. Call Pepe: 503-544-3232; Call Pat: 503-407-9062

893 Logging Equip.
Paramount Ironworks has new brush rakes. We can help your land clearing/ clean up operations. The 8ft rake pictured will fit a variety of dozers and has 1"AF400 rippers, \$1995 and up. If you need something different, we offer custom fab & mobile welding. Let us know how we can help you. Eugene, OR. 541-321-3654



WANTED: Log truck. Self loader preferred. Albany Area to local mills. 25 loads. 503-428-6577

894 Sawmill Equip.
CASH FOR SAWMILLS: We buy Wood-Mizer, Mobile Dimension, Mighty Mite, and more. Portland, OR. Call 971-271-8070

WANTED: Mobile Dimension, Mighty Might or Timber Champ Circular Sawmills. Any age or condition. Have Cash. Will travel. Klamath Falls OR. 530-905-2250

899 Heavy & Indust. Eq.
580 Case Backhoe: Super M. One owner. Ride control, 4WD, 4-in-1 front bucket, all buckets for back, ripper, mechanical thumb, A/C, decent rubber, \$40,000. Payette, ID. 541-403-4182

Compactors: 4'x4', \$5000. 5'x5', \$7500. Salem, OR. 503-559-3186

Jaw Crusher Plant 32"x42". With a separate 32"x42" apron feeder. Both are portable with heavy duty hydraulic legs. Good tires, \$150,000. Oregon. 541-954-4808

D7G Cat Special Application. Hydraulic connections, good under carriage, new clutches, batteries, glass, lights, & heater. All serviced & ready to work, \$33,500. Condon, OR. Call or text 503-351-4412

1985 General with 16' rough dump box setup for 5th wheel BC350-400 13 speed SQHD on spring Aluminum wheels good tires, straight cab Perfect farm truck, water truck, on site dump truck LOW MILES, \$11,500. Sherwood, OR. 503-880-2454

Hitachi 120-5 Excavator: Hydraulic Thumb, Hydraulic Coupler. Dig and Clean Up Buckets. Asking \$39,950. Sandy, OR. Call Pepe: 503-544-3232; Call Pat: 503-407-9062

824 Seed

824 Seed

824 Seed

WE'VE GOT YOUR WARM SEASON HAY AND FORAGE SEED VARIETIES READY!

IOKA MARKETING

•Sorghum Sudangrass •Teff •Millet •Timothy
•Winfred Brassica •Sudangrass •Buckwheat
(503) 873-6498 • cher@iokamarketing.com
Silverton, Oregon

Boost Your Yields! With Wagner Seed

YIELD STAR Cereals Science

We are your full-service seed cleaning and processing plant. Top-quality, weed-free seed! Wheat, triticale and other seed products to raise or contract. We also facilitate seed research.

YS-603: (SWS) Awmed - Tolerant to foot rot. Good falling numbers, good protein. For dryland or irrigated.
YS-801: (HRS) Awmed - Good test weight, good protein. Best performance under irrigation.
YS-802: (HRS) Awmed - Good test weight, good protein. Dryland or irrigated.
YS-5001: (Triticale) Awmed - Good forage quality, good grain yields, good protein.
Now selling Sureflex Conventional com varieties!

WAGNER SEED
(509) 349-8094 WagnerSeedCo.com
20600 Rd 1 SE • Warden, WA 98857 • 1 mile off exit 188, I-90

CALL BY 3PM MON - FRI AND GET YOUR LINE AD ONLINE IN 24 HOURS! (On approval)

Your line ad will also run in the next available print edition of Capital Press.

Capital Press
800-882-6789
CapitalPress.com

PLACE LINE CLASSIFIED ADS TOLL-FREE FROM ANYWHERE!
1-800-882-6789