


Our sales team is here to serve you!

- Real knowledge
- Real people
- Real results!



Greg Hains
West Washington, Portland (Eastside to the Columbia Gorge), and outside the Pacific NW
503-949-9881
ghains@capitalpress.com



Pat McKenzie
South Willamette Valley, South Oregon, Central Oregon, & California
541-521-9008
pmckenzie@capitalpress.com



Anne Ranney
NW Oregon & North Willamette Valley
503-871-7957
aranney@capitalpress.com

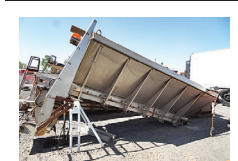


Terra Richter
NE Oregon, East Washington & North Idaho
541-975-4593
trichter@capitalpress.com



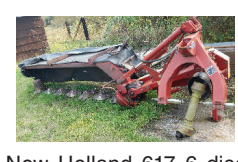
JoAnn Vanderwey
South Idaho, NE Nevada, & SE Oregon
208-880-4334
jvanderwey@capitalpress.com

908 Garden, Turf, Yard Equip.



2004 Swenson Stainless Steel sand and compost distribution bed. 13ft. Complete with control box. Worked fine when taken out of service this year. Excellent condition and is ready to mount and go to work, \$4500. Located in Twin Falls ID. Call 208-613-0050

911 Hay Equip.



New Holland 617 6 disc mower. \$7,200. Eatonville, WA. 253-533-8347

Hay Trailers
2015 Wesco 28.5ft, aluminum deck, wheels. Front and rear, cheaters, excellent condition, \$40,000. Sutter, CA. 530-701-6933

New Holland BB9060 baler, 2009, 3x3 square bales, stored inside. Excellent condition, completely gone through. Low bale count, field ready. Delivery available. \$49,800. Klamath Falls, OR. 503-704-2195



2015 Claas 960 Chopper 1637 hours, 1437 chopper hours, orbits 600 and 380 pickup head with less than 100 acres, cameras, kernel processor but removed, waxed and field ready, \$200,000. Silverton, OR. 503-932-0766

Freeman 370 Baler: Like new, only baled 27,000 bales, recent \$7,600 overhaul, new paint, hydro. \$20,000 OBO. Junction City, OR. 541-998-2429

New Holland 16 HS Header. Very Good Condition. Rubber rollers and extra parts. Sprague, WA. 509-257-2413



2020 Massey Ferguson WR9980 rotary swathers. 2 units available; 540 hours and 551 hours, \$137,500 each. Farmington, NM. Please call 505-326-0145 with questions.



2016 Kubota Disc Mower, DM1024, \$8,900. 2016 Rankin tedder rake, SM300, \$3600. 2016 Massey Ferguson small square baler, MF1840, \$21,500. This equipment has been used 4 seasons on small acreage. Can be sold by the piece or together. Springfield, OR. Tony 541-521-3898



Claas 455 Rollant Uni-wrap round baler wrapper. Kuhn FC4060TCD 13ft mower conditioner. Fella TS801, 25ft rotary hay rake. Big G 10ft off-set disk. Monosem NG 2 row 3 point planter. Brownsmead, OR, 503-454-8047

Looking for a farm or ranch? VISIT **FarmSeller.com**

911 Hay Equip.

New Holland 216 V rake. Field ready, \$8000. Tenino, WA. 360-481-6449

Hayrite Hay Elevator: 16ft. Heavy duty, Marathon 3/4HP, used once, \$900 OBO. Estacada, OR. 503-807-6455

2018 John Deere 328 Square Baler: bale turner ramp. Bought new in 2019. Good Baler, \$21,000 OBO. Tillamook, OR. 503-842-4088

(3) New Holland Twine Balers. (2) **585 Balers** with 15x22 shim kits. All in good condition. Buy both for package deal. **New Holland 1499 Swather,** 12ft roller bar reel and conditioner. Good shape. Parts machine and extra parts can be included. Malin, OR. 541-891-7448

1085 New Holland stacker, good rubber, newer clutch, set up for 2 tie, \$42,500. Central, OR. 541-576-2367



Case IH SC414 center boom swather, 14ft wide, no conditioner, \$5000. Sandy, OR. 503-320-2847



Reese 2400 HL disc mower, 8ft wide cut, \$4000. Sandy, OR. 503-320-2847

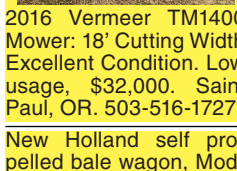
New Holland HW-340 self propelled rotary, 2800+ hours, 15'5" wide. Header updated, \$37,500. Call for details. Sisters, OR. 541-771-4970

New Holland Model 1032 Stacker Liner. Good Condition, \$4500. **New Holland Set of Twin Rakes,** hydraulic reels, complete with pull dolly. Good condition, \$3000 Benton City, WA. 509-845-7228

Large Supply of Rebuilt New Holland Bale Wagons: Also buying New Holland bale wagons. Sod Busters Sales, Polson, MT. 406-883-2118

New And Used Parts: for all models New Holland bale wagons. **Largest Inventory in North America.** Sod Busters Sales, Polson, MT. 877-735-2108 or 406-883-2118

#1 Balewagons: Buy, Sell, New Holland 2&3 wide self-propelled, pull-type models, parts, tires, manuals. Caldwell, ID. 208-880-2889 www.balewagon.com



2016 Vermeer TM1400 Mower: 18' Cutting Width Excellent Condition. Low usage, \$32,000. Saint Paul, OR. 503-516-1727

New Holland self propelled bale wagon, Model 1046, Serial Number 6283. New drive sprocket, 2017 makes the pitch correct, \$4000. Glenwood, WA. 509-364-3407

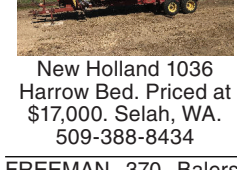
1118 New Holland Swather 14ft header, diesel. Runs great. 1116 swather for parts \$4500/ all. **1283 New Holland** self propelled baler, 14x16 bale, 1425 for parts, \$3000/ both. **New Holland S1048** Bale Wagon, gas and manual transmission, \$7850. **New Holland twin hydraulic rakes,** model 258 and 260, has hydraulics to lift up and down, \$4500. **8580 Case IH Big Baler,** 4x4, \$4000. Arlington, OR. 541-980-4234

917 Orchard/Vineyard Equip.



Vermeer R-23 Twin Rake: nice hydraulic rake, mechanical fold with hydraulic adjust. Asotin, WA. Call or text. 208-791-4826, 208-791-4825

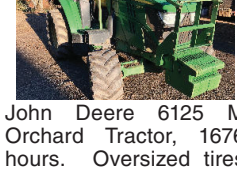
John Deere 945 Flail Conditioner Mower: all new rock guards, work horse, good condition, \$6750 OBO. Scio OR. 503-507-0359



New Holland 1036 Harrow Bed. Priced at \$17,000. Selah, WA. 509-388-8434

FREEMAN 370 Balers. (5) to choose from, Deutz and PTO/ hydro. 16x22. 3 string, \$5000 to \$9000. Christmas Valley, OR. 541-576-4292

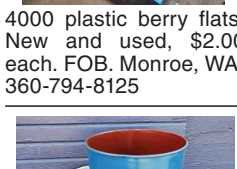
RCO Baits
Gophers • Squirrels
Voles • Moles
Dealer Locator
1-800-214-2248
Harrisburg, OR 5219713-1



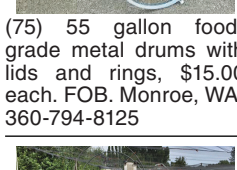
917 Orchard/Vineyard Equip.

John Deere 6125 M Orchard Tractor, 1676 hours. Oversized tires and duals. Full set of weights, limb guard, 3 remotes. \$60,000. Forest Grove, OR. 503-201-1604

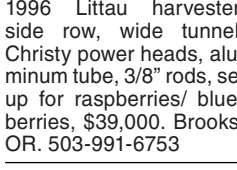
(2) **Littau Berry Rotary Harvesters** 1986 and 1987. Good Machines, Diesel. Littau technician service scheduled before sale, \$20,000 each. Sandy, OR. 907-232-2011



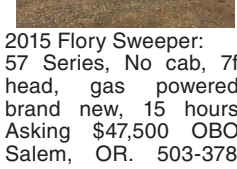
4000 plastic berry flats. New and used, \$2.00 each. FOB. Monroe, WA. 360-794-8125



(75) 55 gallon food-grade metal drums with lids and rings, \$15.00 each. FOB. Monroe, WA. 360-794-8125



1996 Littau harvester, side row, wide tunnel, Christy power heads, aluminum tube, 3/8" rods, set up for raspberries/ blueberries, \$39,000. Brooks, OR. 503-991-6753



2015 Flory Sweeper: 57 Series, No cab, 7ft head, gas powered, brand new, 15 hours. Asking \$47,500 OBO. Salem, OR. 503-378-9179



2000 Gregoire G 117 grape harvester with 3592 hours. Equipped with a grape storage bin and discharge arm. In good condition and ready to work. Located in Lake County California. Call 707-350-3211

2008 Littau Over the Row Harvester: 2500 hours, HD Power Heads, barrel conveyor, canopy, \$91,500. Portland, OR. 503-312-1538

HAZELNUT SHELLING LINE: Scales, Jesse Crackers, Air Separation, Conveyors, Hand Inspection Tables, Bin Fillers, Averages 15,000 lbs per shift, In Shell Cracking, \$65,000. Salem, OR. 503-550-4165

ALUMINUM BINS WITH TOPS: 40" x 45" x 48" CLEAN - were used for storing hazelnut kernels. 95 bins available, \$225 per bin. Salem, OR. 503-550-4165

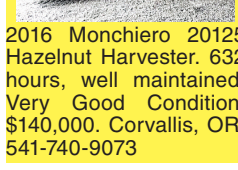
Steel Trellis Poles. New and Nearly new. Call for details. Pasco, WA. 509-539-8619

917 Orchard/Vineyard Equip.



Attention: Wanted Kubota or John Deere, 4x4 compact tractor with loader/equipment. Carlton, OR. 503-550-0094

John Deere 8640: good tires, 6076 hours, 3 point hitch, \$15,500. Monmouth, OR. 503-838-2638, 541-207-4941



1999 Rears 500 gallon airblast sprayer. Overhauled 1 year ago at OVS. Field ready, \$12,500. Corvallis, OR. 541-740-9073

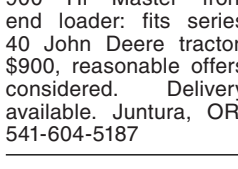
2016 Monchiero 12125 Hazelnut Harvester. 632 hours, well maintained. Very Good Condition, \$140,000. Corvallis, OR. 541-740-9073

920 Tractors

WANTED: John Deere 5100M 2 pair of lift arms for rear three point. 503-838-3779

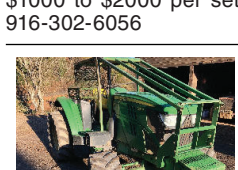


International 1066: front end loader with grapple, quick release, Turbo, cab. Dual rear tires. Tires good shape. New batteries, belts, alternator, water pump. Field ready, \$20,000. Elk, WA. 509-414-3450



John Deere 7800 Tractor: Nice condition, 2WD, duals, quick hitch, 5600 hours, \$39,000. La Grande, OR. Text 541-786-2937. Call 541-421-3073

John Deere 8400T: new tracks and rollers, freshly rebuilt engine, lots of new parts, \$42,000 OBO. Turner, OR. 503-932-6080

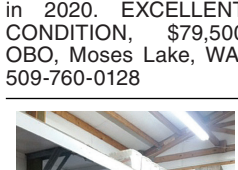


2640 John Deere: 75HP, 2 remotes, 3 point hitch, hour meter shows 4000 hours, \$13,500. Sandy, OR. 503-320-2847

Case IH MX200: 4x4, good shape, \$52,500 OBO. Monmouth, OR. 503-881-1303



John Deere 6125 M Orchard Tractor, 1676 hours. Oversized tires and duals. Full set of weights, limb guard, 3 remotes. \$60,000. Forest Grove, OR. 503-201-1604



2006 John Deere 8130 Row Crop Tractor, 6771 Hours, Single Front 380/85R34, Rear Single 480/80R46. MFWD Power Shift with 1000 large shaft PTO and 3 point lift, Instructor Seat and new A/C installed in 2020. EXCELLENT CONDITION, \$79,500 OBO. Moses Lake, WA. 509-760-0128



Allis Chalmers Model 185: 75 hours on total engine rebuild, new clutch, etc. Very good condition. Set of duals, good condition. Front tires like new. Original front weights, 2 speed PTO, \$12,000. Mt. Vernon, WA. 360-708-7943

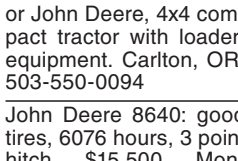


1983 International 5288. MFWD 3600 Hours. 3 remotes. New tires. Good Tractor, \$28,500. Hillsboro, OR. 503-329-5253

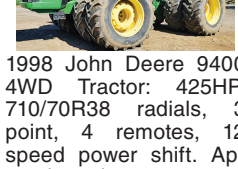


2015 John Deere 6170 M with H380 Loader, MFWD, 2500 hours, 20 speed power quad, left hand reverse, quick hitch, triple remotes, duals \$120,000. Bow, WA. 360-661-2810

920 Tractors



1998 John Deere 9400 4WD Tractor: 425HP, 710/70R38 radials, 3 point, 4 remotes, 12 speed power shift. Approximately 12,000 hours, \$55,000. Amity, OR. 503-435-7504

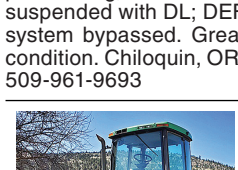


2018 John Deere 5055: 4WD with loader, bought new in 2019. 400 hours. Good tractor, \$35,000. Tillamook, OR. 503-842-4088

2002 CASE IH STX450 Quad track, 30in tracks, easy pilot auto steer, \$90,000. Culver, OR. 541-410-4500

1977 John Deere 4430 Tractor, 125HP, \$16,500. Culver, OR. 541-410-4500

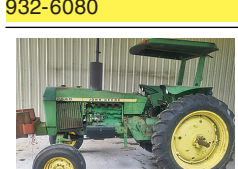
New Holland T8.275 Tractor with Duals. Approximately 2750 hours; original owner. 1 pair Rr 500lb weights, 22 front weights with bracket. Cab suspension, Navigation 11 controls. Transmission 19/4 powerlifting; Forward HD suspended with DL; DEF system bypassed. Great condition. Chilcoquin, OR. 509-961-9693



John Deere 8400T: new tracks and rollers, freshly rebuilt engine, lots of new parts, \$42,000 OBO. Turner, OR. 503-932-6080



John Deere 8400T: new tracks and rollers, freshly rebuilt engine, lots of new parts, \$42,000 OBO. Turner, OR. 503-932-6080



2640 John Deere: 75HP, 2 remotes, 3 point hitch, hour meter shows 4000 hours, \$13,500. Sandy, OR. 503-320-2847

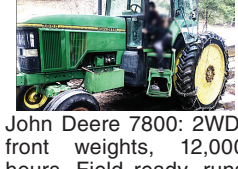
Case IH MX200: 4x4, good shape, \$52,500 OBO. Monmouth, OR. 503-881-1303



CASE 1594 Tractor: Unknown working hours. Runs, drives, needs some brake work, \$8000. Yacolt, WA 360-263-4024



For Sale or Trade Challenger MT655B: 8000 hours. Trade for 70HP to 80HP tractor. Downsizing. Salem, OR. 503-551-1578



John Deere 7800: 2WD, front weights, 12,000 hours. Field ready, runs great. Recent transmission overhaul, \$23,500. Yakima, WA. 509-941-7132

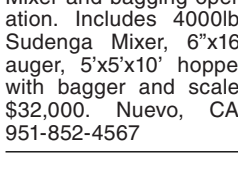
923 Farm Equipment



Behrens 48" rototiller: unused since new in 2020, \$1450. Dexter, OR. 541-852-2965



John Deere 348 Baler. Minimal use, stored under cover, \$15,200. Eatonville, WA. 253-533-8347



Complete Feed/ Fertilizer Mixer and bagging operation. Includes 4000lb. Sudenga Mixer, 6"x16" auger, 5'x5'10" hopper with bagger and scale, \$32,000. Nuevo, CA. 951-852-4567

923 Farm Equipment



3440 Spra-Coupe: good condition, 3592 hours, 2WD, 5 speed transmission, 4 cylinder Perkins diesel, EZ-Steer GPS, 60' booms. Everything works. Field ready, \$22,500 OBO. Pasco, WA. 509-727-5495

H-2A LABOR & HOUSING

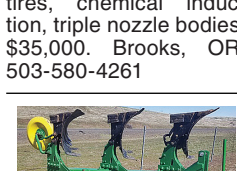
H-2A Farm Labor & Housing available. Housing starts @ \$10/ day. Yakima - Hermiston Region. **AgriLabor:** "Labor Where you want it. When you want it!" 541-571-5989 AgriLaborInc.com



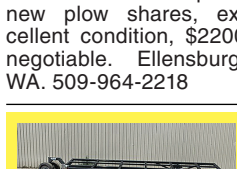
1999 John Deere 410E Backhoe: 2900 hours, hay fork. Good condition, \$22,000. Juntura, OR. 541-604-5187



554 RoGator Sprayer: 90ft booms, 650 gallon stainless tank, Raven 460 controller, 4200 hours, 66x44 tundra tires, 12.4x38 narrow tires, chemical induction, triple nozzle bodies, \$35,000. Brooks, OR. 503-580-4261



John Deere e0845: 3 bottom rollover plow, new plow shares, excellent condition, \$2200 negotiable. Ellensburg, WA. 509-964-2218



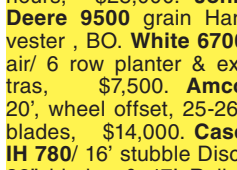
NEW IA Header Trailers. Adjustable Bunk Mounts, 8 hole wheels and radial tires. •20ft \$3,995 •25ft \$4,395 •30ft \$4,795 •35ft \$5,195 •40ft \$5,595 Bend, OR. 541-548-7185; mtcsales.net

Spring Sale
CAT D6D 5X 717: 75% good under carriage, \$25,000. CAT D4 7U/ Dozer, \$5,500. **New Holland T6070 C&A,** 4WD, 1,400 hours & tanks, \$61,000. **International Harvester 656,** Hi-Crop, cultivators, \$8,500. **Case 105N,** 4WD, 95% rubber/ 730 hours, \$28,000. **John Deere 9500** grain harvester, BO. **White 6700** air/ 6 row planter & extras, \$7,500. **Amco 20,"** wheel offset, 25-26" blades, \$14,000. **Case IH 780/ 16" stubble Disc,** 32" blades & 17" Roller Hydraulic, \$30,000. **Y&J 400 Ditcher,** \$4,500. Wilcox 6 bottom flip plow, \$6,000. **35 Melon or Pumpkin harvest trailers,** call. **Ball 1000** gallon on Trailer/ nurse tank, \$5,500. **New Holland 2550 14' Swather,** new hydraulic pump, new conditioner, \$19,000. **8"x 30" aluminum main line** 330 sticks at \$35 per stick. **12" aluminum 30" gated pipe,** call. Acampo, CA. David 916-806-7431 or dave-taylor@sbcglobal.net

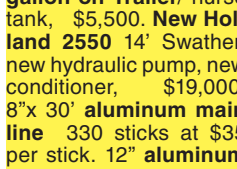
SPRING EQUIPMENT SALE



Portable Toilet Trailers
GGAP Compliant
Single or Double Trailers
B and L Fabrication, LLC
503-932-3498
www.BNLFAB.com
Salem, OR.



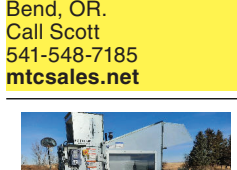
Galvanized Decking
36"Lx9"Wx1.5"D. Large quantities available. \$10 each. Davenport, WA. 509-721-0120



Gofer Digger, \$1000. Culver, OR. 541-610-2506



John Deere Tandem Disc, 12ft, \$4500. New Holland 1068 Bale Wagon diesel, \$24,500. John Deere 7000 6 row corn planter. Dry fertilizer, \$6000. John Deere 468 baler, \$5500. Ephrata, WA. 509-750-9284



New IA Switch Plows
•3 Bottom \$7,995
•4 Bottom \$8,995