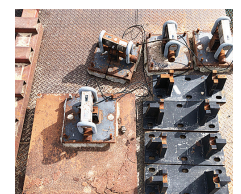


869 Livestock Equip. & Supplies



Electric Scales 10'2" wide x 16' long. Ideal as axle scales for large trucks or livestock. All components included, \$3500 Meridian, ID. 208-888-1376

872 Dairy Eq. & Supplies

Polydome Calf Nursery: Hutches available for various climates. West-ern Polydome, Inc. Mon-roee, WA. 800-822-5837

Stainless Steel Pipe: Approximately 100ft. of 1 1/2" and 200ft. of 2" stainless steel 304. Want to sell altogether, \$1500. 2 stainless flowverters. Price to be determined. Klamath Falls, OR. 541-892-3618

875 Tanks & Storage



MVE MDX-119: Nitro-gen storage tank. Good condition. Make offer. Tillamook, OR. 503-801-1957

FUEL TANKS: Used single wall tanks 1500 & 2000 gallons. New 1000, 2000, 3000 and 4000, etc. gallon double walled tanks. Sale-m, OR. Peter 503-881-9803

878 Generators



Mobile solar unit with 24 solar panels like new \$12,500. Prineville, OR. Jeff 503-209-5852

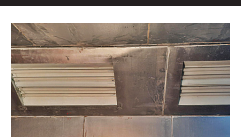


GENERATORS: Used, low hour takeouts, 20kW to 2000kW, diesel, propane, & natural gas. Cooperstown, ND. We ship nationwide. 701-371-9526 or 701-367-4305 abrahamindustrial.com

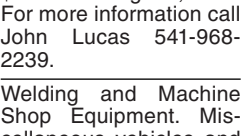


Feed Mixer Diamond Ind. 670-T vertical, twin screw feed mixer. New spare tire included. Chiloquin, OR. 503-999-6013

881 Shop Equip. & Tools



250 KW Genset. CAT Diesel. Very low hours. Like new condition. 120-480 Volt. 1 and 3 phase. Skid mount. Ready to install and put to work, \$13,900. Located in Twin Falls ID. 208-613-0050



Paint Booth. Door opening: 9' high. Door width: 10'. Inside width is 16'. Inside length is 24'. Fire suppression system, \$6500. Eugene, OR. For more information call John Lucas 541-968-2239.

887 Irrigation Equip.

Wade Rain: center riser hand lines, hook and latch. Like New, \$85/each. Nampa, ID. 208-697-3472

WHEELINES FOR SALE 5' wheels x 1,800'. Levelers, sprinklers, travelers. 4 with working motors, \$6,000 each. 1 with non-working motor, \$4,000. Fields, OR. Call 503-799-2677

887 Irrigation Equip.

Bring a Pipe Trailer! 50 acres of Wade and other brand parts. 3", 4" and 5" pipe main and lateral plus accessories, \$75 each. Pedee, OR. 503-838-3512



Water Hauling Trailer for large acreage spraying, 6000 gallon, hydraulic driven pump, heater unit for winter use. Insulated stainless steel, 2 compartments. \$9,000. Meridian, ID. 208-888-1376



Deutz/Cornell Pump-Set (NOS): •2014 Deutz D914L06, s/n 8898824, 116 HP @ 2300 rpm •2019 Cornell 4RBEM16-3, s/n 236324, 12.75" Impeller (full) •OID 200 Gal. Diesel Fuel Trailer, 3/16" Construction, Baffles, 6K Dexter Axle •Clemons 1200A Galv. Pres. Filter, 3/32" SS Screen, Pressure Fine Filter •Protek DP-7 Primer Pump, 7" Hand Primer, plumbed •Racor 445R60 30 Micron, Fuel/Water Separator, plumbed •Lofta EP-250 G7 Safety Panel, 7 Gauge Panel, 1st fault LED indication, Asking Price: \$32,865. Oregon-Idaho Diesel. Nyssa, OR. Contact Steve: 208-739-2246

1998 Gorman Rupp 6 in. self priming waste and irrigation pump. Trailer mount. 432 ACTUAL HOURS. 4 cylinder. Deutz Diesel. Former City machine in like new condition, \$9900. Located in Twin Falls ID. Call 208-613-0050

Wade 2000 + feet of 5" main line. 440ft of 4" pipe with sprinkler heads. 150 Nelson big gun on tripod. High pressure irrigation pump, 30HP, pipe trailer, miscellaneous fittings, \$6000/ all. Chehalis, WA. 360-520-5494



Mitchell VFD, 25HP Turban Pump, \$25,000. Sunnyside, WA. 509-728-2729



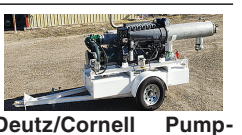
REFURBISHED PUMPS AT A FRACTION OF THE COST OF NEW. (6) Cornell Marathon Electric, 15 to 75hp, 1760-3500 RPM's; (3) Berkeley Baldor Industrial Motor, 7.5 to 15hp, 3450 RPM's. Meridian, ID. 208-888-1376

887 Irrigation Equip.

Pivots: All brands. No rust. Plus buried wire. Call Keizer, OR. Cell 503-881-3232

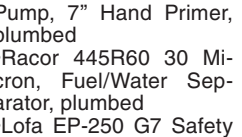
Wade Rain 1/4 mile-Wheel Lines. Some 5 foot wheels & some 7 foot wheels. Forest Grove, OR. 503-310-2524

6"x30" Wade Rain Main line: 100 pieces, \$3/foot, OBO. 30 pieces 3"x40" Moore Rain with sprinklers, \$2/foot OBO. Cornelius, OR. Jeff 503-341-4289



468 Nelson 1/2in 20-04 impact sprinklers with 9/64in nozzles, \$6 each. Saint Paul, OR. 503-932-8871

WaterTec G4 90-380 Hose Reel Galvanized frame Hose length 1250 ft Komet sprinkler included \$23 990.00



Free Freight in Washington or Oregon! 360.393.4923 watertecna.com

890 Packing/Processing Eq. Used Super Sacks. Used once. Stovepipe Top: \$2. Opened Top: \$3. Salem, OR. 503-932-8598



NEW IA Pivot Track Closer. Heavy Duty with adjustable cone discs. From 60" to 12" closing width. Hydraulic Depth Control water fill roller packer, \$4795. Bend, OR. 541-548-7185 mtcsales.net

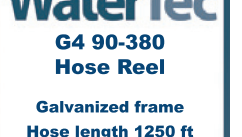
887 Irrigation Equip.

(37) Used Pivots: New listings coming. Engines, pumps. Garden Valley, ID. Call Mike at 208-420-1480, or see www.pivotsplus.com

For Sale: 3/4 hp 10 gallon per minute. Single phase 230v Franklin pump. 100' deep, set schedule 120 pipe, 100' #12 sub flat cable. Went up in hp, in well 13 months, \$1,000. Woodburn, OR. 503-339-5532

Bauer hard hose irrigator, 950ftx3.7" hose, 10HP electric booster, \$5000/ gun. \$500 for booster. Salem, OR. 503-551-1578

Hitachi 120-5 Excavator: Hydraulic Thumb, Hydraulic Coupler. Dig and Clean Up Buckets. Asking \$39,950. Sandy, OR. Call Pepe: 503-544-3232; Call Pat: 503-407-9062



D7G Cat Special Application. Hydraulic connections, good under carriage, new clutches, batteries, glass, lights, & heater. All serviced & ready to work, \$33,500. Condon, OR. Call or text 503-351-4412



Hydro Ax #520: Original 453 Detroit. Well Maintained. Extra blades, parts pump, factory winch. Can oscillate and articulate, \$20,000. Portland, OR. 503-201-7677

REPLACEMENT DECAL SETS Construction, Forestry & Ag Equipment. Fast, Knowledgeable, Reliable Service. 215-536-5339 email: info@CustomServicesCompany.com

893 Logging Equip. Paramount Ironworks has new brush rakes. We can help your land clearing/ clean up operations. The 8ft rake pictured will fit a variety of dozers and has 1"AR400 rippers, \$1995 and up.



John Deere 350D LC Excavator: Hydraulic Coupler. Dig bucket. Asking \$44,950. Delivery Available. Sandy, OR. Call Pepe: 503-544-3232; Call Pat: 503-407-9062



2003 Hitachi ZX230LC Excavator: Aux Hydraulics, Hydraulic Thumb, Hydraulic Quick Connect. Dig Bucket, 9300 hours. Asking \$59,950. Sandy, OR. Call Pepe: 503-544-3232; Call Pat: 503-407-9062

894 Sawmill Equip. CASH FOR SAWMILLS: We buy Wood-Mizer, Mobile Dimension, Mighty Mite, and more. Portland, OR. Call 971-271-8070

WANTED: Mobile Dimension, Mighty Might or Timber Champ Circular Sawmills. Any age or condition. Have Cash. Will travel. Klamath Falls OR. 530-905-2250

899 Heavy & Indust. Eq. (2) TD9 Crawlers: both are parts CAT, 1 good engine, rebuilt steering clutches, 1 blade, \$2500/pair. 1 heavy duty brush blade, \$1000. Coos Bay, OR. 541-267-4794

BEST SELLERS... "Sold everything in the herd but a couple of old bulls." Kester Ranch, Cottage Grove, OR Call 1-800-882-6789 and sell too!

899 Heavy & Indust. Eq.

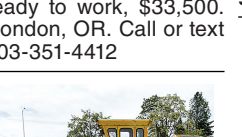
1985 General with 16' rough dump box setup for 5th wheel BC350-400 13 speed SQHD on spring Aluminum wheels good tires, straight cab Perfect farm truck, water truck, on site dump truck LOW MILES, \$11,500. Sherwood, OR. 503-880-2454



Compactors: 4'x4', \$5000. 5'x5', \$7500. Salem, OR. 503-559-3186



Jaw Crusher Plant 32"x42". With a separate 32"x42" apron feeder. Both are portable with heavy duty hydraulic legs. Good tires, \$150,000. Oregon. 541-954-4808



Ingersoll Rand SP56D Roller. 84" smooth drum. Drum drive works, ROPS, Detroit engine, Runs good, ready to work, 3800 hours, \$18,000. Oregon City, OR. 503-329-0309

FOR SALE! 1984 truck weld pup trailer, \$6,500. Clinton, WA. 360-941-8495

902 Farm Equip. Parts MacDon 9352i with 15 ft. 972 draper. 3,258 hours, \$27,000 OBO. Othello, WA. 509-750-4298

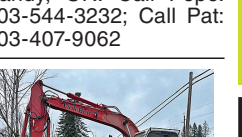
Freeman 370 Deutz 2013 16 inch chamber. 227 hours, \$50,000 OBO. Othello, WA. 509-840-4639

Kuhn Hay Tedder. 3 point hookup, in great shape. Molalla, OR. 503-651-2220. 503-260-4239.

907 Nursery Equip. & Supplies FRESH SAWDUST: Consistently fair pricing. 9 Unit Loads Now Available Forest-Grove, OR. For pricing call 503-849-0216

USED NURSERY CONTAINERS: Used, but reusable nursery containers. All sizes. Inventory changes daily. Call for current availability and prices. Sawyer Farms, Scio OR. 503-769-3417, juddsfarm@vvi.com (also wanted: used containers)

2010 Case Super M Series III Backhoe: 4x4, 3200 Hours, Extend-A-Hoe. Two Dig Buckets, Forks. Asking \$39,950. Sandy, OR. Call Pepe: 503-544-3232; Call Pat: 503-407-9062



Linkbelt 130LX Excavator: Hydraulic Thumb, Hendrix Hydraulic, Quick Change, Auxiliary Hydraulics. Dig & Clean Up Buckets. Asking \$39,950. Sandy, OR. Call Pepe: 503-544-3232; Call Pat: 503-407-9062

902 Farm Equip. Parts 902 Farm Equip. Parts

907 Nursery Equip. & Supplies

907 Nursery Equip. & Supplies

899 Heavy & Indust. Eq.



580 Case Backhoe: Super M. One owner. Ride control, 4WD, 4-in-1 front bucket, all buckets for back, ripper, mechanical thumb, A/C, decent rubber, \$40,000. Payette, ID. 541-403-4182



P&H Hydraulic Excavator. Operational condition, 60,000lbs. \$8000. Payette, ID. 541-403-4182



WAGNER Compactor: WC - 17 Low Hours New Batteries. Video Available. \$9800. The Dalles, OR. 800-748-8061



902 Farm Equip. Parts MacDon 9352i with 15 ft. 972 draper. 3,258 hours, \$27,000 OBO. Othello, WA. 509-750-4298

Freeman 370 Deutz 2013 16 inch chamber. 227 hours, \$50,000 OBO. Othello, WA. 509-840-4639

Kuhn Hay Tedder. 3 point hookup, in great shape. Molalla, OR. 503-651-2220. 503-260-4239.

907 Nursery Equip. & Supplies FRESH SAWDUST: Consistently fair pricing. 9 Unit Loads Now Available Forest-Grove, OR. For pricing call 503-849-0216

USED NURSERY CONTAINERS: Used, but reusable nursery containers. All sizes. Inventory changes daily. Call for current availability and prices. Sawyer Farms, Scio OR. 503-769-3417, juddsfarm@vvi.com (also wanted: used containers)

2010 Case Super M Series III Backhoe: 4x4, 3200 Hours, Extend-A-Hoe. Two Dig Buckets, Forks. Asking \$39,950. Sandy, OR. Call Pepe: 503-544-3232; Call Pat: 503-407-9062



902 Farm Equip. Parts 902 Farm Equip. Parts

907 Nursery Equip. & Supplies

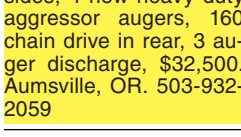
907 Nursery Equip. & Supplies



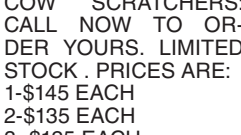
WANTED: Used 40 to 60 bushel hog feeders with lids. 509-223-3010

Kirby 836 CF Twin Screw Vertical Mixer. Trailer, 2 speed, stainless steel bottom & sides, augers. 75% full set knives, rear door, front cross conveyor, Digi-Star scales with remote \$30,000 OBO. Kirby 615 CF Horizontal Mixer on 1995 Ford, single axle truck, standard transmission. Stainless steel liner on bottom & sides, 4 new heavy duty aggressor augers, 160 chain drive in rear, 3 auger discharge, \$32,500. Aumsville, OR. 503-932-2059

COW SCRATCHERS: CALL NOW TO ORDER YOURS. LIMITED STOCK. PRICES ARE: 1-\$145 EACH 2-\$135 EACH 3+-\$125 EACH THESE ARE 4 FOOT TALL ABOUT 2FT WIDE 8.5 INCH. HOLE FOR YOUR POST TO SLIDE THROUGH. Turner, OR. 503-999-6013



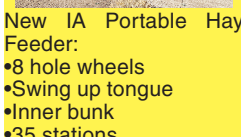
Feed Mixer Diamond Ind. 670-T vertical, twin screw feed mixer. New spare tire included. Chiloquin, OR. 503-999-6013



New IA Portable Hay Feeder: •8 hole wheels •Swing up tongue •Inner bunk •35 stations \$4,595 2 or more \$4,295 each. Bend, OR. 541-548-7185 mtcsales.net



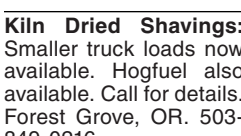
872 Dairy Eq. & Supplies



6000 gallon Dari-Kool Milk Tank. (2) 5HP compressors, \$20,000. Enumclaw, WA. 253-740-2072



Kiln Dried Shavings: Smaller truck loads now available. Hogfuel also available. Call for details. Forest Grove, OR. 503-849-0216



NEW MANURE SPREADER 400 bu. • BUY OR RENT Call Scott at Barr-Tech Compost/Organics Recycling Authorized Dealer of PK RITE Spreaders 509-590-0437 www.Barr-Tech.net Sprague, WA 5224303-1

907 Nursery Equip. & Supplies

907 Nursery Equip. & Supplies

881 Shop Equip. & Tools



Paint Booth. Door opening: 9' high. Door width: 10'. Inside width is 16'. Inside length is 24'. Fire suppression system, \$6500. Eugene, OR. For more information call John Lucas 541-968-2239.

Welding and Machine Shop Equipment. Miscellaneous vehicles and tools. Dundee, OR. 503-550-2312

887 Irrigation Equip.

Wade Rain: center riser hand lines, hook and latch. Like New, \$85/each. Nampa, ID. 208-697-3472

WHEELINES FOR SALE 5' wheels x 1,800'. Levelers, sprinklers, travelers. 4 with working motors, \$6,000 each. 1 with non-working motor, \$4,000. Fields, OR. Call 503-799-2677

907 Nursery Equip. & Supplies

907 Nursery Equip. & Supplies

Your Leading Source for Pump & Motor Repairs HPS Pipe & Supply On Site or In-house • Motor Rewinds Ag • Commercial • Industrial 598 Baseline, Cornelius, OR 97113 Phone (503) 357-4217 • CCB#120254 www.hpspipe.com info@hpspipe.com

ERNST Irrigation • Electrical • Tractor "We understand your water needs. Let our experienced staff assist you with all your water quality and quantity needs." PRODUCTS: • T and C 1/2" - 6" • Filtration • Valves • Sprinklers • Water Meters • Chemical Injection • Bandit Clamps • Aluminum Irrigation Fittings & Pipe 2" - 10" • Wheelines & Wheeline Fittings • Hard Hose Travelers • Linears • Pivots • Water Pumps • Steel Pipe & Fittings 1/2" - 12" • PVC Fittings & Pipe 1/2" - 18" • Low Volume/Micro Irrigation Drip Hose 1/2" - 2" • Angus Drag Hose 2 1/2" - 5" Suction & Discharge Hose SERVICES: Design & Consultation • Pumps & Panels, including Variable Frequency Drives • Traveler Repair, all makes & models • Field Fabrication • Big Gun Rebuilding • Water Testing / Flow & Quality www.ErnstIrrigation.com 20179 Main St., St. Paul, OR 97137 (503) 633-1111

LOG TRUCK NEEDED WANTED: Log truck. Self loader preferred. Albany Area to local mills. 25 loads. 503-428-6577 894 Sawmill Equip. CASH FOR SAWMILLS: We buy Wood-Mizer, Mobile Dimension, Mighty Mite, and more. Portland, OR. Call 971-271-8070 WANTED: Mobile Dimension, Mighty Might or Timber Champ Circular Sawmills. Any age or condition. Have Cash. Will travel. Klamath Falls OR. 530-905-2250 899 Heavy & Indust. Eq. (2) TD9 Crawlers: both are parts CAT, 1 good engine, rebuilt steering clutches, 1 blade, \$2500/pair. 1 heavy duty brush blade, \$1000. Coos Bay, OR. 541-267-4794

2003 Hitachi ZX230LC Excavator: Aux Hydraulics, Hydraulic Thumb, Hydraulic Quick Connect. Dig Bucket, 9300 hours. Asking \$59,950. Sandy, OR. Call Pepe: 503-544-3232; Call Pat: 503-407-9062 Linkbelt 130LX Excavator: Hydraulic Thumb, Hendrix Hydraulic, Quick Change, Auxiliary Hydraulics. Dig & Clean Up Buckets. Asking \$39,950. Sandy, OR. Call Pepe: 503-544-3232; Call Pat: 503-407-9062 BEST SELLERS... "Sold everything in the herd but a couple of old bulls." Kester Ranch, Cottage Grove, OR Call 1-800-882-6789 and sell too!

Nyssa Tractor & Implement Our yard has 5 miles of road, the rest is farm machinery & parts. www.nyssatractor.com Toll Free (833) 372-4020 Nyssa, OR

BIG TRACTOR PARTS, INC. ~ GEARED FOR THE FUTURE ~ STEIGER TRACTOR SPECIALIST 1. We are your source for new & used Steiger drivetrain parts Series 1-9300 Series. 2. We rebuild Spicer manual transmissions, Fugl power shift transmissions, dropboxes & axle with ONE YEAR WARRANTY! 3. We now rebuild computer control boxes for Steiger tractors 1982-1999. 800-982-1769 www.bigtractorparts.com

A Variety of Sanitation Stations! Wash Station Portable Restroom Deluxe Restroom with wash station Double Restroom w/multi-faucet wash station GK MACHINE INC DONALD OREGON 503-678-5525 www.GKMachine.com