

Classifieds

OMISSION & ERROR: Capital Press will exercise due care to prevent omissions and mistakes, but its total liability for any error, in any advertisement published, shall not exceed the proportionate space in which the error occurred. Credit, when allowable, will apply to the first insertion only.

800-882-6789 | View all classified ads for free at CapitalPress.com

107 Public Notices

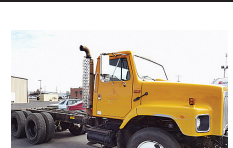
Found: Firearm. Value above \$250. Marion County. Claim by July 11, 2021. Mail R. McCall, PO Box 1065, Lincoln City, OR. 97367

210 Trucks



1974 Kenworth: 318 Detroit, 10 speed, spring over walking beam, 80% rubber. Working everyday, \$9750. Enterprise, OR. 541-263-0132

210 Trucks



1990 IHC 2674 cab and chassis. NTC400 Eaton 8LL transmission, PS, AC, Jake brake. Front mount PTO pump with tank. Double frame. Hendrickson spring rears. G11/22.5 Radials. Former County truck that has been well maintained, is very clean and work ready, \$14,900. Located in Twin Falls ID. Call 208-613-0050

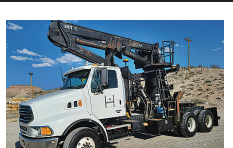


2005 IHC Paystar 5000I tandem dump truck. 14ft. Stainless Steel dump bed with 28in. live chain floor with removable conveyor cover and regular tailgate with metered gate discharge. Cummins ISX 435HP Diesel. Eaton 13 speed. PS, AC, CC, Jake. Brand new 11/22.5 radials. Bed alone is \$70K new. One owner former State truck that is in like new condition. Well maintained! \$36,900. Located in Twin Falls ID. Call 208-613-0050



1990 Ford LS8000 Mechanic's truck with 8600lb. 20ft. IMT 5016 crane, IMT DA435HA Hydraulic air compressor, 3 lube systems. NEW FACTORY REMAN 7.8 L Diesel. 13 speed. PS, AC. 11R/22.5 tires are like new. This truck is spotlessly clean and has been well maintained. Runs, drives and operates like new, \$18,900. Located in Twin Falls ID. Call 208-613-0050

210 Trucks



2007 Sterling 9500 with Grizzly 267C LOG LOADER. 2200 HOURS. 26,700Lb. lift capacity. 360 non continuous rotation. 44" grapple with 25ft. reach. 12.8L Diesel. 430HP. 8LL Eaton transmission, 64,000 GVW. 90% 11/22.5 radials. Truck came from the State of Arizona Power Authority and has had fantastic taxpayer maintenance. Truck looks, operates and drives like a new one, \$49,000. Located in Twin Falls ID. Call 208-613-0050.



1996 Ford LN7000 with mechanic's bed, 6500 LB. All hydraulic Auto Crane, 160 CFM Sullair Rotary screw air compressor, PTO Drive and Honda 3500 Watt Gen-set. Cummins 5.9 Diesel. Allison Auto transmission. PS, AC. 80,000 ACTUAL MILES. One owner truck from a large Southern California County. In near new condition, \$15,900. Located in Twin Falls Idaho. Call 208-613-0050



2009 Sterling Acterra with 10ft. dump bed, 3500 LB. Autocrane and arrowboard. 6.7 Cummins diesel. Allison AT. PS, AC, CC, PW. 23,000 GVW. 245/19.5 tires are like new. 50,495 ACTUAL MILES. One owner former large City vehicle that is in like new condition. Work ready, \$24,900. Located in Twin Falls ID. Call 208-613-0050

210 Trucks



1982 IHC 1900 Dump Truck. 7 to 8 yard. 4x4. DT466 Diesel. Allison Automatic 2 speed transfer. 132,000 Actual Miles. Good rubber. One owner former Municipal truck. Runs and works like new, \$14,900. Located in Twin Falls ID. Call 208-613-0050



2001 IHC 2574 tandem axle cab and chassis. N-14 Cummins, 13 speed. 112,000 ACTUAL MILES. Jake, PS, AC, PS. Traction lock. 164" cab to trunnion. Double frame full length. Hendrickson spring rears. 64,000 GVW. Near new 22.5 Radial tires. Former California DOT truck that has had excellent maintenance. Runs, drives and operates like new. NO RUST! \$29,000. Located in Twin Falls ID. Call 208-613-0050



1991 International Diesel Truck: 14ft flatbed dump, \$13,000. Brookings, OR. 541-469-2068



1994 IHC 2674 with ALTEC AM855-F68, 75FT. WH manlift. DT 466 Diesel. 13 speed. PS, AC. Good 11/22.5 radials with 385/65/22.5 fronts. 60,000 GVW. 80,000 ACTUAL MILES. LOW HOURS. One owner Municipal Utility truck that has been well maintained and is work ready, \$29,000. Located in Twin Falls ID. Call 208-613-0050.

210 Trucks



2006 Sterling side loader refuse truck with 26,000 ACTUAL MILES. AM-REP, AM0CASLTPO-19 body. Cummins ISL 8.9 L. with Allison Automatic. Backup and load cameras. 60K GVW. 385 and 315/22.5 like new radial tires. Exceptionally clean and well maintained truck from a City near Los Angeles. DOT current, and it is work ready, \$29,000. Located in Twin Falls ID. Call 208-613-0050



2012 ProStar Plus tandem axle semi tractor. 240,000 ACTUAL MILES. MaxForce 13 Diesel. 450HP. 10 Speed Eaton. PS, AC, CC, PW, PM. Jake brake. Traction control. Well maintained lease return that is very clean and work ready, \$19,900. Located in Twin Falls ID. Call 208-613-0050

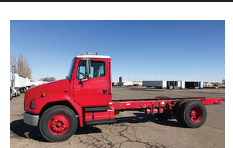


2007 Chev 4500 Chipper Debris dump truck. 15 Ft. bed. 5.2 L Diesel. Auto. trans. 126K. ACTUAL MILES. NO CDL REQUIRED. AC,PS,CC. One owner truck with good rubber and maintenance. Very clean. \$19,900. Located in Twin Falls ID. Call 208-613-0050



2007 IHC 7400 single axle dump truck. 7 yard bed. DT570 Diesel. Eaton 10 speed transmission. Jake brake. AC, PS, CC. 37K, GVW. 80% 11/22.5 radials. One owner fleet maintained truck from a State Agency that is very clean. No rust and operates like a new truck, \$22,900. Located in Twin Falls ID. Call 208-613-0050

210 Trucks



2003 Freightliner FL70 cab and chassis. 330HP CAT 3126 Diesel. Allison 6 speed. AT with retarder and PTO capable. PS, AC. 16ft. of straight 11in. frame. Brand new radials. 33,000 GVW. Former California State vehicle that is as clean as new and has excellent fleet maintenance. Truck is in like new condition, \$14,900. Located in Twin Falls ID. 208-613-0050



2008 Sterling 6X6, CAT C13 470HP, 10 speed, 20k GVW front end, Excellent condition, 40K miles, \$76,000. Gresham, OR. Tim 503-719-2545



2000 Chevrolet cab and chassis with 61,000 ACTUAL MILES. CAT 3126 Diesel. Spicer 7 speed. PS, AC, CC. 138" cab to rear axle. 33,000 GVW. Double frame. 90% 11/22.5 radials. Former Southern California City truck that has been well maintained, is very clean and runs and drives like new, \$15,900. Located in Twin Falls ID. Call 208-613-0050

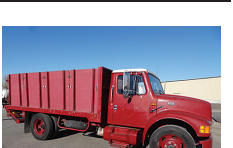


1990 GMC Top Kick 5 Yard Dump. Diesel, Allison. 130,000 miles, good rubber. Former county truck, \$12,000 Ilwaco, WA. 360-244-0307



1973 Ford 8000: 350 Cummins, 8 speed with overdrive, air brakes, 12ft flat bed, new batteries, 450,000 miles, \$4500. Sandy, OR. 503-320-2847

210 Trucks



1996 IHC 4900 15ft. flatbed truck with removable 4 ft. stake sides and 3000 Lb. liftgate. T444E, 7.3 L. Turgo Diesel with 5 and 2 trans. 103,000 ACTUAL MILES. Brand new radial tires. 26,000 GVW. NO CDL. One owner truck from Cal Fire. Clean, well maintained and operates like new. \$14,900. Located in Twin Falls ID. Call 208-613-0050



2004 IHC 7400 Dump Truck with DT530 Diesel, 300HP. Eaton 10 speed Transmission. 37K. GVW. AC, Cruise, Jake brake. Plumbed for trailer. 70% 12/22.5 radials. Low miles. One owner former State agency. Very clean and well maintained. Ready to work, \$19,900. Located in Twin Falls ID. Call 208-613-0050

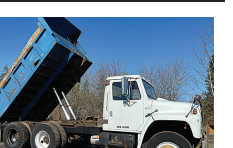


1995 Ford F8000 Tandem Axle Vactor Truck. Vac Con V311tha unit with rodder. John Deere auxiliary motor. 60,000 GVW. Cummins Diesel. Allison AT. Differential Lock. AC, PS. 65,000 ACTUAL MILES. Former Municipal unit that is well maintained and very clean. Work ready, \$26,900. Located in Twin Falls ID. Call 208-613-0050



1994 Kenworth T800: Cummins L10 350HP with 718,623 miles, Fuller 9 speed transmission, AC, cruise control, Wiesner Metal Fab LLC built 22' bed with 6' racks. Harsh hoist, aluminum wheels, Hendrickson spring rears. \$54,000. Aumsville, OR. Call 503-551-1793

210 Trucks



1979 International Dump Truck: DT466 Turbo Diesel, 15 Speed. Hendrix Spring. Asking \$8,950 Sandy, OR. Call Pepe: 503-544-3232; Call Pat: 503-407-9062



1991 Ford 8000 Fire Engine. 3208 Turbo Cat Diesel. Allison AT. Hale Power Shift pump and apparatus. 1000 GPM @150 PSI. 1200 Gal. Tank. Water Cannon, draft hard hose and ladders and all emergency equipment. Former County truck that is clean as new and operates the same, \$9900. Located in Twin Falls, ID. Call 208-613-0050



1994 GMC TOPKICK with ALTEC AM855 62 FT. WH. manlift. 40,000 ACTUAL MILES. CAT 3126 DIESEL. Allison Automatic. PS, AC. Former city truck from the Los Angeles area. Well maintained and clean as new and operates, runs and drives like a new truck, \$19,900. Located in Twin Falls ID. Call 208-613-0050



2003 Freightliner FL70 Hot Shot Crew Truck. 300 HP Diesel. Allison 6 spd Auto Trans. Retarder, PS, AC, CC. Air Cond. and heat in 14 person crew box. Brand new 11/22.5 radial tires. Low Miles. This former State truck is as clean as a new one and is work ready. Needs nothing, \$19,900. Located in Twin Falls, ID. Call 208-613-0050

Your ad will benefit today from the strength of our newspaper and multimedia products and services

Call today to advertise.

Capital Press
1-800-882-6789
Fax 503-370-4383
CapitalPress.com

LIST YOUR CLASSIFIEDS TODAY.
1-800-882-6789
FAX 503-364-2692 • CapitalPress.com

Your ad here! Call 800-882-6789

Newsday Crossword

- ACROSS**
- 1 Most intrepid
 - 7 Nose (out)
 - 11 Okra bit
 - 14 Fit for farming
 - 15 Opera-house level
 - 16 Coveted Billboard position
 - 17 Idle monitor's display
 - 19 More, in Ecuador
 - 20 Secondhand transaction
 - 21 Much of Mongolia
 - 22 Herbal quaff
 - 25 Acrobatic
 - 8 Down
 - 27 Top pitcher
 - 28 Sort of social engagement
 - 31 Long time
 - 34 Avoid deftly
 - 35 TV slot seller
 - 36 Ripken of Cooperstown
 - 37 On the lam
 - 41 Divas' offerings
 - 43 Eventually become
 - 44 Elm, for instance
 - 48 Brink
 - 49 Game of Shadows sleuth
 - 50 "Bam!" chef
 - 54 Something cast
 - 55 Casino fixtures
 - 57 Fury
 - 58 Bow-taking time
 - 63 Be a pest
 - 64 Tux-rental occasion

- DOWN**
- 1 Krypton or radon
 - 2 Rainbow shape
 - 3 Deface
 - 4 Movie critic
 - 5 Roger
 - 5 Winter hazard
 - 6 Verb category
 - 7 List shortener
 - 8 Plunge into water
 - 9 "Wow!"
 - 10 Slip up
 - 11 Los Angeles suburb
 - 12 How some dares are done
 - 13 Hanker for
 - 18 Volvo alternative
 - 21 Bible distributor
 - 22 Yucatan native
 - 23 With frothing
 - 24 At hand
 - 25 Bearded antelope
 - 26 Discombobulate
 - 29 See 36 Down
 - 30 Feeling off
 - 32 Software instruction file
 - 33 Indulgent spell
 - 36 With 29 Down, dealership offering
 - 38 Keats creations
 - 39 Some 4WD vehicles
 - 40 Sporting blade
 - 42 A thing's
 - 44 Hallowed place
 - 45 "Yippee!"
 - 46 Claim without proof
 - 47 Napoleon exile site
 - 51 Still in the game
 - 52 Italian port
 - 53 Broad tie
 - 55 Easy pace
 - 56 PIN seekers
 - 58 Form 1040 pro
 - 59 Diner device
 - 60 Botheration
 - 61 Actor
 - 62 Auction grouping

1	2	3	4	5	6		7	8	9	10		11	12	13
14							15						16	
17							18						19	
			20									21		
22	23	24								25	26			
27							28	29	30					
31			32	33			34							
35							36			37		38	39	40
			41				42			43				
44	45	46								47			48	
49										50	51	52	53	
54							55	56						
57							58	59				60	61	62
63							64					65		
66							67					68		

Answers in classification 863



1997 IHC 2564 Water Truck. 2500 gallon, 2 heads; front and rear. Cummins M-11, 370HP. 13 speed. PS, AC, Side-locks. 64,750 GVW. Good 22.5 Radials. One owner former State vehicle that has been well maintained and is work ready, \$16,900. Located in Twin Falls ID. Call 208-613-0050



2000 IHC tandem axle dump truck. 15 yard bed. Cummins N-14 Diesel. Allison 6 speed automatic transmission. PS, AC, CC, PW, Jake Brake. Hendrickson suspension. 18,000 lb. front axle. Side lock rears. Electric load tarp. 94,000 ACTUAL MILES. 4859 HOURS. 80% 22.5 radials. Former State DOT truck that has been well maintained, is very clean, runs and drives like new and comes with service records since in service, \$39,900. Located in Twin Falls ID. Call 208-613-0050



2006 Volvo VNM VE D12 12.1 L Engine, 2005 US EPA Label, Air Conditioner, Cruise Control, Engine Brake, Eaton Fuller 10 Speed Manual Transmission, Differential Lock, 12000 lb Front Axle, 38000 lb Rears, 50000lb GVWR, Air Ride Cab, Steel Wheels, 11R22.5 Front Tires, 11R22.5 Rear Tires, Air Ride Suspension, Air Sliding 5th Wheel, Dual Fuel Tanks. 743,xxx miles, \$10,500. Madras, OR. 541-777-4393

KENWORTH T800 4-AXLE CHASSIS

2 TRUCKS @ \$55,000

3 TRUCKS @ \$80,000

Cummins ISX engines, 18-spd. trans., single spd. Eaton rear-ends 4:10 or 4:11 gears w/locker, HENDRICKSON HAUL-MAX WALKING BEAM SUSP.

- #19 CJ217332 2012, D46-170HP rears, 262" WB, 485hp.....\$80,000
- #42 CJ317336 2012, D46-170HP rears, 272" WB, 485hp.....\$80,000
- #74 DR363688 2013, D46-170HP rears, 262" WB, 485hp.....\$80,000
- #66 R383800 2003, DSP-463P rears, 271" WB, 475hp.....\$55,000
- #94 R066820 2004, DSP-463P rears, 270" WB, 475hp.....\$55,000

CLEAN AND IN EXCELLENT SHAPE! MAINTENANCE RECORDS - REGULAR OIL SAMPLES

Thomas H. IRELAND INCORPORATED

More info: www.irelandtrucking.com
Call Charles Ireland 541-863-1501
Myrtle Creek, OR

LOVELL Truck Sales 50th ANNIVERSARY

2003 Freightliner FL-112, tandem axle knuckle boom truck. MBE 4000 370hp, Fuller 8LL, 46k rears, 20k front axle, lift axle, trailer package, 252"wb, ps, ac, cruise control, puff track suspension, 208k miles, Fassi F270 knuckle boom crane with remote. \$39,500

2004 and 2006 International 4400 single axle tractor DT-466 250 hp, fuller 10speed, 150" wb, 11r 22.5 tires..... \$12,500 each

95 Ford F700 flatbed Detroit Cummins 5.9, Allison AT545, spring suspension, 20' flatbed, 224"wb, 189k miles, power steering, air brakes, 24500gvw..... \$8,000

2001 Freightliner single axle tractor Allison MD-3060p automatic transmission, Cat 250 hp, 152" wb.....\$13,500

1-800-451-0012
(503) 266-5886
FAX (503) 266-6903
LOVELLTRUCKSALES.COM
680 SW 1st Ave (Hwy 99 E) • Canby, OR