

911 Hay Equip.

Must See
New Holland h6740 disc mower in excellent shape. Very little use. Well maintained, like new, \$8,000. Buckley, WA. 253-666-2739



Pottinger 4.54T Tedder. Bought it but never used. Shedded, \$10,800. Raymond, WA. 360-942-3748

RETIRED

HAY EQUIPMENT: Hay Squeeze/ dozer 4x4 combo, diesel, on tires, \$18,500. Deutz Tedder, \$1,400. Ford Rollover Plow, \$2,800. John Deere Land plane, \$3,700. Single Darf Rake, \$900. John Deere Seeder, \$800. Small Ripper. Disc. Packer. Klamath Falls, Oregon. John 541-892-1948

John Deere 945 Flail Conditioner Mower : all new rock guards, work horse, good condition, \$8500 OBO. Scio OR. 503-507-0359

1118 New Holland Swather 14ft header, diesel. Runs great. 1116 swather for parts \$4500/ all. **1283 New Holland** self propelled baler, 14x16 bale, 1425 for parts, \$3000/ both. **New Holland S1048** Bale Wagon, gas and manual transmission, \$7850. **New Holland twin hydraulic rakes**, model 258 and 260, has hydraulics to lift up and down, \$4500. **8580 Case IH Big Baler**, 4x4, \$4000. **10 bale hay grapple**, \$1500. Arlington, OR. 541-980-4234

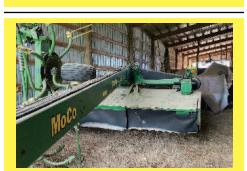


New Holland 617 6 disc mower. \$7,200. Eatonville, WA. 253-533-8347

Hay Trailers
2015 Wesco 28.5ft, aluminum deck, wheels. Front and rear, cheaters, excellent condition, \$40,000. Sutter, CA. 530-701-6933

New Holland BB9060 baler, 2009, 3x3 square bales, stored inside. Excellent condition, completely gone through. Low bale count, field ready. Delivery available. \$49,800. Klamath Falls, OR. 503-704-2195

2009 9635 Massey Ferguson Swather: 16ft razor bar header, conditioner rolls, 1 year old. Trimble guidance system, 2439 hours, \$35,000. Sunnyside, WA. 509-840-0424



2009 946 disc mower with flail conditioner. Works very well, \$12,000 OBO Scio, OR. 541-619-8891



2015 Claas 960 Chopper 1637 hours, 1437 chopper hours, orbits 600 and 380 pickup head with less than 100 acres, cameras, kernel processor but removed, waxed and field ready, \$200,000. Silverton, OR. 503-932-0766

Freeman 370 Baler: Like new, only baled 27,000 bales, recent \$7,600 overhaul, new paint, hydro, \$20,000 OBO. Junction City, OR. 541-998-2429

New Holland 16 HS Header. Very Good Condition. Rubber rollers and extra parts. Sprague, WA. 509-257-2413

1432 New Holland 12ft disc mower, \$9000. Mower bought new. Used 2 seasons on 30 acres. Crabtree, OR. 503-871-9114



New Holland 216 Rake. Good condition, \$6500. Culver, OR. 541-610-2506

Hayrite Hay Elevator: 16ft. Heavy duty, Marathon 3/4HP, used once, \$900 OBO. Estacada, OR. 503-807-6455

911 Hay Equip.

New Holland 216 V rake. Field ready, \$8000. Tenino, WA. 360-481-6449

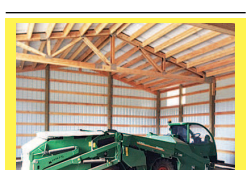
RCO Baitals
Gophers • Squirrels
Voies • Moles
Dealer Locator
1-800-214-2248
Harrisburg, OR 5719713-1

917 Orchard/Vineyard Equip.

ORCHARD Clean Up Storm Clean up and Thinning: Mechanical thinning. Fast, reliable, low impact. FREE estimates. Serving Oregon 541-979-7282



Orchard Sprayer 500 gallon stainless steel Ag Tec 6013; 2005 John Deere turbo mounted on 1992 Chevy 1T 4x4 dual y 454, 4 speed manual, charcoal-filtered A/C; Raven SCS440 radar, flow control computer capable of 20-50+ gpa, \$8,000. Yamhill, OR. 503-318-1328



2016 Monchiero 20125 Hazelnut Harvester. 632 hours, well maintained. Very Good Condition, \$140,000. Corvallis, OR. 541-740-9073



1999 Rears 500 gallon airblast sprayer. Overhauled 1 year ago at OVS. Field ready, \$12,500. Corvallis, OR. 541-740-9073

Steel Trellis Poles. New and Nearly new. Call for details. Pasco, WA. 509-539-8619



John Deere 6125 M Orchard Tractor, 1676 hours. Oversized tires and duals. Full set of weights, limb guard, 3 remotes. \$60,000. Forest Grove, OR. 503-201-1604

(2) Littau Berry Rotary Harvesters 1986 and 1987. Good Machines, Diesel. Littau technician service scheduled before sale, \$20,000 each. Sandy, OR. 907-232-2011



4000 plastic berry flats. New and used, \$2.00 each. FOB. Monroe, WA. 360-794-8125



(75) 55 gallon food-grade metal drums with lids and rings, \$15.00 each. FOB. Monroe, WA. 360-794-8125



1996 Littau harvester, chride row, wide tunnel, Christy power heads, aluminum tube, 3/8" rods, set up for raspberries/blueberries, \$39,000. Brooks, OR. 503-991-6753



2015 Flory Sweeper: 57 Series. No cab, 7ft head, gas powered, brand new, 15 hours. Asking \$47,500 OBO. Salem, OR. 503-378-9179



2006 John Deere 8130 Row Crop Tractor, 6771 Hours, Single Front 380/85R34, Rear Single 480/80R46. MFWD Power Shift with 1000 large shaft PTO and 3 point lift, Instructor Seat and new A/C installed in 2020. EXCELLENT CONDITION, \$79,500 OBO, Moses Lake, WA. 509-760-0128

2000 Gregoire G 117 grape harvester with 3592 hours. Equipped with a grape storage bin and discharge arm. In good condition and ready to work. Located in Lake County California. Call 707-350-3211

920 Tractors

John Deere 6700 Sprayer: Well maintained machine; 60ft booms. Greenstar & Autotrac ready with ATU 200. 400 Gallon Solution T-tank. Machine hours, 2665. Machine Serial N06700X002019, \$25,000. Sunnyside, WA. 509-391-0325

Kubota Gray Market: 4x4, 15HP, loader, 3 point, tiller, box scraper, mower, \$6000 OBO. Rickreall, OR. 503-932-6073

John Deere 8400T: new tracks and rollers, freshly rebuilt engine, lots of new parts, \$42,000 OBO. Turner, OR. 503-932-6080

Case IH MX200: 4x4, good shape, \$52,500 OBO. Monmouth, OR. 503-881-1303

Ford 5000: 68HP, good rubber, good engine, with loader. Good brakes, shop Manuel. Needs Select-o-speed transmission work, \$3500 OBO. Molalla, OR. 503-250-3952



John Deere 7800: 2WD, front weights, 12,000 hours. Field ready, runs great. Recent transmission overhaul, \$24,500. Yakima, WA. 509-941-7132



2016 John Deere 6155R: IVT, 2100 hours, 4 remotes, MFWD, \$106,000. Terrebonne, OR. 541-771-8886

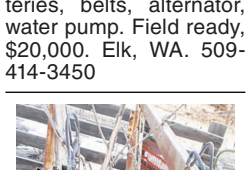
John Deere 8640 Tractor. New tires, new engine. 4 remotes. 3 point, PTO. In use now, \$18,000. McMinnville, OR. 971-241-3267



International 1066: front end loader with grapple, quick release, Turbo, cab. Dual rear tires. Tires good shape. New batteries, belts, alternator, water pump. Field ready, \$20,000. Elk, WA. 509-414-3450



900 Hi Master front end loader: fits series 40 John Deere tractor. \$900, reasonable offers considered. Delivery available. Juntura, OR. 541-604-5187



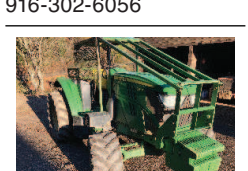
WANTED: Used Rubber tracks for CAT Challenger 65. Can be worn out, but no cables showing. \$1000 to \$2000 per set. 916-302-6056



NEW IA Heavy Duty Offset Wheel Discs. Scraper kit, EZ adjust gang angle, split gang axles, 26" notched blades front and rear. \$12ft. \$13,400 \$15ft. \$14,900 \$18ft. \$16,400. 8ft.-22ft. 8,000 lbs. **Introductory pricing. Order NOW!** Bend, OR. 541-548-7185 mtcsales.net



2006 John Deere 8130 Row Crop Tractor, 6771 Hours, Single Front 380/85R34, Rear Single 480/80R46. MFWD Power Shift with 1000 large shaft PTO and 3 point lift, Instructor Seat and new A/C installed in 2020. EXCELLENT CONDITION, \$79,500 OBO, Moses Lake, WA. 509-760-0128



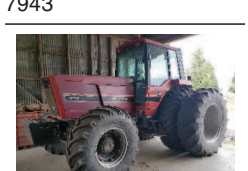
Galvanized Decking 36"Lx9"Wx1.5"d. Large quantities available. \$10 each. Davenport, WA. 509-721-0120

920 Tractors

WANTED: John Deere 5100M 2 pair of lift arms for rear three point. 503-838-3779



Allis Chalmers Model 185: 75 hours on total engine rebuild, new clutch, etc. Very good condition. Set of duals, good condition. Front tires like new. Original front weights, 2 speed PTO, \$12,000. Mt. Vernon, WA. 360-708-7943



1983 International 5288 MFWD 3600 Hours. 3 remotes. New tires. Good Tractor, \$28,500. Hillsboro, OR. 503-329-5253



IH Farnall 200 Tractor. Excellent condition. Engine rebuilt, new wiring, new battery, new rear tires. Fast Hitch. Ready for work or Parade, \$3450. Nampa, ID. 208-870-5787



2015 John Deere 6170 M with H380 Loader, MFWD, 2500 hours, 20 speed power quad, left hand reverse, quick hitch, triple remotes, duals \$120,000. Bow, WA. 360-661-2810

Attention: Wanted Kubota or John Deere, 4x4 compact tractor with loader/equipment. Carlton, OR. 503-550-0094

John Deere 8640: good tires, 6076 hours, 3 point hitch, \$15,500. Monmouth, OR. 503-838-2638, 541-207-4941



1998 John Deere 9400 4WD Tractor: 425HP, 710/70R38 radials, 3 point, 4 remotes, 12 speed power shift. Approximately 12,000 hours, \$55,000. Amity, OR. 503-435-7504



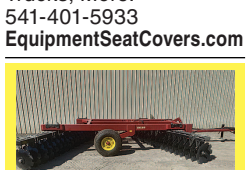
Rears 84ft Pendulum Boom. Almost Never Used. Excellent condition, \$5500. Gresham, OR. Tim 503-719-2545



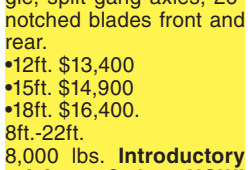
RoGator 664 Sprayer: with Case FM750 controller, 70ft booms, \$28,500. **Oliver 240A** gravity table, factory re-conditioned, \$19,500. **Ideal 4 drum indent model** S220CPF, \$14,500. Monmouth, OR. 503-838-2638



Disc Ripper: 7 shank, Case 690 Conser-till. New front blades last season, brand new back blades now, \$17,000 OBO. Turner, OR. 503-932-6080



NEW IA Subsoilers 26" Clearance \$3 Shank \$2,595 \$5 Shank \$2,995 \$7 Shank \$3,595 Gauge Wheel Set, Add \$950. \$HD Subsoilers with Dual Gauge Wheels. Weight 4,500 to 5,500 lbs. 30" Clearance. \$7 Shank \$7,995. \$9 Shank \$8,995. \$11 Shank \$9,995. Bend, OR. 541-548-7185 mtcsales.net



NEW IA Tandem and Offset Wheel Discs. \$7ft \$5,795 \$8ft \$5,995 \$9ft \$6,195 \$10ft \$6,395 \$11ft \$6,595 \$12ft \$6,795 \$13ft \$6,995 Bend, OR. 541-548-7185 mtcsales.net

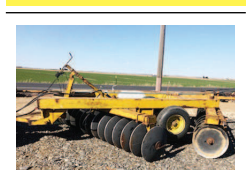


NEW IA Super Duty Offset Wheel Discs. EZ Adjust Gang Angle. 30" notched blades front and rear, adjustable scraper kit, 2" gang shafts, split gang shafts, high clearance. Approximately 14,000 lbs. \$16ft \$24,900 \$21ft \$27,400 \$10ft to 25ft Bend, OR. 541-548-7185 mtcsales.net

923 Farm Equipment



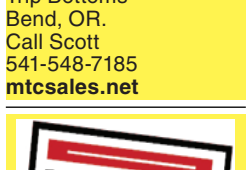
NEW IA Rotary Mowers •6ft. 3 Point \$1,795 •7ft. 3 Point \$1,995 •10ft. 3 Point \$3,695 •12ft. 3 Point \$3,995 Bend, OR. Call Scott 541-548-7185. Visit: mtcsales.net



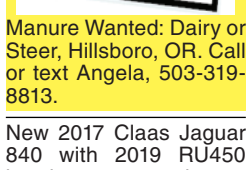
Schafer 16ft offset disc, 26" new blades, with packer hitch. Excellent Condition, \$7500 OBO. Othello, WA. 509-760-3276



NEW IA Switch Plows •3 Bottom \$7,995 •4 Bottom \$8,995 •5 Bottom \$9,995 •6 Bottom \$14,995 •7 Bottom \$15,995 Poly Wear Armor HD Components Trip Bottoms Bend, OR. Call Scott 541-548-7185 mtcsales.net



Manure Wanted: Dairy or Steer, Hillsboro, OR. Call or text Angela, 503-319-8813.



New 2017 Claas Jaguar 840 with 2019 RU450 header. 64 hours. \$400,000. Woodburn, OR. 503-710-8535



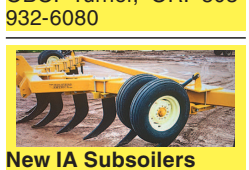
NEW IA Pasture Aerators: Bolt on teeth. Heavy Duty Frame. •8ft \$6,595 •10ft \$9,995 •12ft \$10,995 •27ft wing fold, \$27,900. Includes cement blocks. Bend, OR. 541-548-7185 mtcsales.net



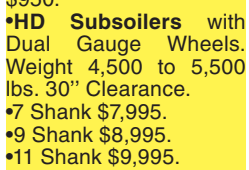
NEW IA Hydraulic Box Scrapers with hydraulic tilt •LD 7ft. \$2,150 •LD 8ft. \$2,350 •LD 10ft. \$2,550 •LD 12ft. \$2,750 •HD 8ft. \$3,595 •HD 10ft. \$3,795 •HD 12ft. \$3,995 •HD 14ft. \$4,295 Bend, OR. 541-548-7185 mtcsales.net



Rears 84ft Pendulum Boom. Almost Never Used. Excellent condition, \$5500. Gresham, OR. Tim 503-719-2545



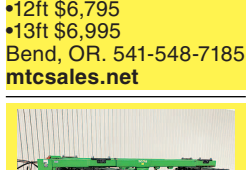
RoGator 664 Sprayer: with Case FM750 controller, 70ft booms, \$28,500. **Oliver 240A** gravity table, factory re-conditioned, \$19,500. **Ideal 4 drum indent model** S220CPF, \$14,500. Monmouth, OR. 503-838-2638



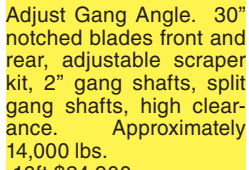
Disc Ripper: 7 shank, Case 690 Conser-till. New front blades last season, brand new back blades now, \$17,000 OBO. Turner, OR. 503-932-6080



NEW IA Subsoilers 26" Clearance \$3 Shank \$2,595 \$5 Shank \$2,995 \$7 Shank \$3,595 Gauge Wheel Set, Add \$950. \$HD Subsoilers with Dual Gauge Wheels. Weight 4,500 to 5,500 lbs. 30" Clearance. \$7 Shank \$7,995. \$9 Shank \$8,995. \$11 Shank \$9,995. Bend, OR. 541-548-7185 mtcsales.net



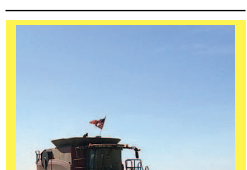
NEW IA Tandem and Offset Wheel Discs. \$7ft \$5,795 \$8ft \$5,995 \$9ft \$6,195 \$10ft \$6,395 \$11ft \$6,595 \$12ft \$6,795 \$13ft \$6,995 Bend, OR. 541-548-7185 mtcsales.net



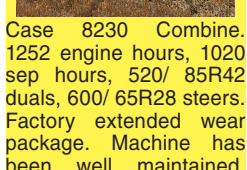
NEW IA Super Duty Offset Wheel Discs. EZ Adjust Gang Angle. 30" notched blades front and rear, adjustable scraper kit, 2" gang shafts, split gang shafts, high clearance. Approximately 14,000 lbs. \$16ft \$24,900 \$21ft \$27,400 \$10ft to 25ft Bend, OR. 541-548-7185 mtcsales.net

923 Farm Equipment

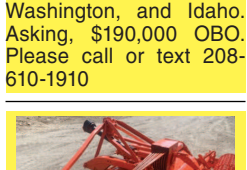
A building that will last a lifetime. Quonset Hut, 24ftx6ft wide. 30ft long, 12ft high. Never assembled, \$12,000 OBO. Delivery Available. Goldendale, WA. 509-773-5598



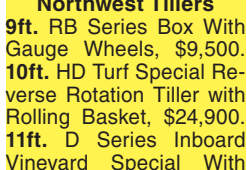
Euro-Spaend S300L Broadcast Spreader. Used one season and stored inside. Puyallup, WA. 253-307-4226



JOHN DEERE 9660WTS COMBINE: 2220 separator hours. 2968 engine hours. MacDon PW7 pickup header, PFP performance internal parts (call for details). Very nice grass machine, \$87,500 or \$77,500 without header, Molalla OR, call/ text 503-201-2777, 503-867-0186



Case 8230 Combine. 1252 engine hours, 1020 sep hours, 520/ 85R42 duals, 600/ 65R28 steers. Factory extended wear package. Machine has been well maintained. Luxury cab, AFX Pro 700 display, auto guidance system, longer auger, straw chopper/ spreader, folding auger and folding bin extensions. Clean machine. Delivery may be available in Oregon, Washington, and Idaho. Asking, \$190,000 OBO. Please call or text 208-610-1910



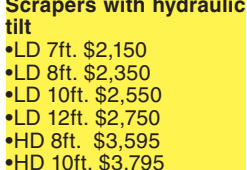
Northwest Tillers 9ft. RB Series Box With Gauge Wheels, \$9,500. 10ft. HD Turf Special Reverse Rotation Tiller with Rolling Basket, \$24,900. 11ft. D Series Inboard Vineyard Special With Rolling Basket, \$14,900. All In Excellent Condition Bend, OR. Call Scott 541-548-7185 See at: mtcsales.net



NEW IA Pasture Aerators: Bolt on teeth. Heavy Duty Frame. •8ft \$6,595 •10ft \$9,995 •12ft \$10,995 •27ft wing fold, \$27,900. Includes cement blocks. Bend, OR. 541-548-7185 mtcsales.net



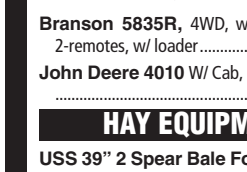
NEW IA Hydraulic Box Scrapers with hydraulic tilt •LD 7ft. \$2,150 •LD 8ft. \$2,350 •LD 10ft. \$2,550 •LD 12ft. \$2,750 •HD 8ft. \$3,595 •HD 10ft. \$3,795 •HD 12ft. \$3,995 •HD 14ft. \$4,295 Bend, OR. 541-548-7185 mtcsales.net



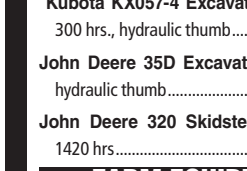
Rears 84ft Pendulum Boom. Almost Never Used. Excellent condition, \$5500. Gresham, OR. Tim 503-719-2545



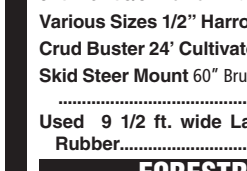
RoGator 664 Sprayer: with Case FM750 controller, 70ft booms, \$28,500. **Oliver 240A** gravity table, factory re-conditioned, \$19,500. **Ideal 4 drum indent model** S220CPF, \$14,500. Monmouth, OR. 503-838-2638



Disc Ripper: 7 shank, Case 690 Conser-till. New front blades last season, brand new back blades now, \$17,000 OBO. Turner, OR. 503-932-6080



NEW IA Subsoilers 26" Clearance \$3 Shank \$2,595 \$5 Shank \$2,995 \$7 Shank \$3,595 Gauge Wheel Set, Add \$950. \$HD Subsoilers with Dual Gauge Wheels. Weight 4,500 to 5,500 lbs. 30" Clearance. \$7 Shank \$7,995. \$9 Shank \$8,995. \$11 Shank \$9,995. Bend, OR. 541-548-7185 mtcsales.net



NEW IA Tandem and Offset Wheel Discs. \$7ft \$5,795 \$8ft \$5,995 \$9ft \$6,195 \$10ft \$6,395 \$11ft \$6,595 \$12ft \$6,795 \$13ft \$6,99