

**824 Seed**  
Quality VNS Alfalfa Seed: \$2.00/lb. Touchet, WA. Chris Kregger 509-394-2400

Pasture Seed \$1.20/ lb. Lawn Seed \$1.20/ lb. Wheat Straw \$120/ ton. Grass Hay \$180/ ton. Wheat \$6/ bag. Rickreall, OR. 503-623-6922

**825 Fertilizer & Soil Amendments**



Organic Fertilizer  
•Bulk Chicken Manure  
•Bulk Chicken Litter  
•Delivery Services  
For pricing and freight quotes call 541-926-1829 or e-mail: paulh@potentgrow.com

**826 Organic**

900 Bales of Organic Haylage: good quality, \$55/ bale. Scio, OR. 503-932-1005

4,000 bushels organic barley, 3,000 bushels organic peas. Sold by Truckload or Bulk Sack. 1 ton minimum. Montesano, WA. 360-827-5604

**869 Livestock Equip. & Supplies**



New IA Portable Hay Feeder:  
•8 hole wheels  
•Swing up tongue  
•Inner bunk  
•35 stations  
\$4,595  
2 or more \$4,295 each. Bend, OR. 541-548-7185 mtcsales.net



Powder River Chute with tail gate, 2 sections of alloy and 2 bows, \$3,500. Loomis, WA. 509-223-3010

**Livestock Panels:** 16' (6) rail, (3) brace, \$128 each. 12' panels, (6) rail, (2) brace, \$96. Bow gates, all lengths and sizes. These panels are new Green color, hundreds available. Heavy 16' Feeder Panels, \$360 each. La Grande, OR. 541-805-9279, 541-963-6258



Electric Scales 10'2" wide x 16' long. Ideal as axle scales for large trucks or livestock. All components included, \$3500 Meridian, ID. 208-888-1376



WANTED: Used 40 to 60 bushel hog feeders with lids. 509-223-3010

**Kirby 836 CF Twin Screw Vertical Mixer.** Trailer, 2 speed, stainless steel bottom & sides, augers, 75% full set knives, rear door, front cross conveyor, Digi-Star scales with remote \$30,000 OBO. Kirby 615 CF Horizontal Mixer on 1995 Ford, single axle truck, standard transmission. Stainless steel liner on bottom & sides, 4 new heavy duty aggressor augers, 160 chain drive in rear, 3 auger discharge, \$32,500. Aumsville, OR. 503-932-2059

**872 Dairy Eq. & Supplies**

Polydome Calf Nursery: Hutches available for various climates. Western Polydome, Inc. Monroe, WA. 800-822-5837

DeLaval 2HP SMOOTH OPERATOR Milk Pump. \$1,500. Arlington, WA. 425-422-4437

DeLaval 10HP VSD Vacuum Pump. \$5,000. Arlington, WA. 425-422-4437

LELY Juno 100 Robotic Feed Pusher/ Scraper, \$7,500. Arlington, WA. 425-422-4437



6000 gallon Dari-Kool Milk Tank. (2) 5HP compressors, (2) condensers, \$20,000. Enumclaw, WA. 253-740-2072

CAPITAL PRESS CLASSIFIEDS GET RESULTS!

**872 Dairy Eq. & Supplies**

MUELLER 3000 Gallon MILK TANK, including (2) 5HP Compressor & Wash system, \$6,500. Arlington, WA. 425-422-4437

**Kiln Dried Shavings:** Smaller truck loads now available. Hogfuel also available. Call for details. Forest Grove, OR. 503-849-0216

**875 Tanks & Storage**

**FUEL TANKS:** Used single wall tanks 1500 & 2000 gallons. New 1000, 2000, 3000 and 4000, etc. gallon double walled tanks. Salem, OR. Peter 503-881-9803



Diesel Storage Tank: 10,000 gallon. Double wall with containment. and fuel pump, \$5000. Other sizes available. Vancouver, WA. 503-799-0184

**878 Generators**

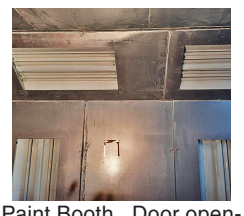


**GENERATORS:** Used, low hour takeouts, 20kW to 2000kW, diesel, propane, & natural gas. Cooperstown, ND. We ship nationwide. 701-371-9526 or 701-367-4305 abrahamindustrial.com



250 KW Genset. CAT Diesel. Very low hours. Like new condition. 120-480 Volt. 1 and 3 phase. Skid mount. Ready to install and put to work, \$13,900. Located in Twin Falls ID. 208-613-0050

**881 Shop Equip. & Tools**



Paint Booth. Door opening: 9' high. Door width: 10'. Inside width is 16'. Inside length is 24'. Fire suppression system, \$6500. Eugene, OR. For more information call John Lucas 541-968-2239.

**887 Irrigation Equip.**

**887 Irrigation Equip.**

**Pivots: All brands.** No rust. Plus buried wire. Call Keizer, OR. Cell 503-881-3232

Irrigation Pump: 20HP, Marathon motor. Jacazzi pump, \$1500. Sequim, WA. 360-460-0696

Wade Rain 1/4 mile-Wheel Lines. Some 5 foot wheels & some 7 foot wheels. Forest Grove, OR. 503-310-2524

**800ft 4" Wade Mainline.** Beaverton, OR. 503-516-4446



NEW IA Pivot Track Closer. Heavy Duty with adjustable cone discs. From 60" to 12" closing width. Hydraulic Depth Control water fill roller packer, \$4795. Bend, OR. 541-548-7185 mtcsales.net

**(37) Used Pivots: New listings coming.** Engines, pumps. Garden Valley, ID. Call Mike at 208-420-1480, or see www.pivotsplus.com

Bauer hard hose irrigator, 950ftx3.7" hose, 10HP electric booster, \$5000/ gun. \$500 for booster. Salem, OR. 503-551-1578

Wade Rain: center riser hand lines, hook and latch. Like New, \$85/ each. Nampa, ID. 208-697-3472



Water Hauling Trailer for large acreage spraying, 6000 gallon, hydraulic driven pump, heater unit for winter use. Insulated stainless steel, 2 compartments. \$9,000. Meridian, ID. 208-888-1376



1998 Gorman Rupp 6 in. self priming waste and irrigation pump. Trailer mount. 432 ACTUAL HOURS. 4 cylinder. Deutz Diesel. Former City machine in like new condition, \$9900. Located in Twin Falls ID. Call 208-613-0050

**The West's BEST Ag News!**  
- newspaper  
- e-paper  
- facebook  
- twitter  
- web  
CapitalPress.com

**WATER MASTER SERIES AND EVERGREEN**  
SUPERIOR SERVICE & DESIGN  
• All your needs for irrigation parts service  
• We build custom equipment for your special needs  
• Hose replacements & fusion repairs  
• Transport Tanks • Rental Returns & Used Equipment  
• Structural and steel available for purchase

**VALLEY WORKMAN**  
Truck Equipment  
• Full Service  
• Alterations  
• Dump Bodies • Hoists  
• Farmbeds • Flatbeds

**VALLEY FAB**  
10910 Portland Rd. NE • Brooks, OR  
Call: 503-792-3739 • Fax: 503-792-3738

**887 Irrigation Equip.**

Bring a Pipe Trailer! 50 acres of Wade and other brand parts. 3", 4" and 5" pipe main and lateral plus accessories, \$75 each. Pedee, OR. 503-838-3512

**Frost Protection**  
Pipe & Supply  
Authorized Factory Dealer of Orchard-Rite® Wind Machines  
598 Baseline  
Cornelius, OR  
Office: 503-357-4217  
info@hpspipe.com

**WaterTec**  
G4 90-380  
Hose Reel  
Galvanized frame  
Hose length 1250 ft  
Komet sprinkler included  
\$23 990.00  
Free Freight in Washington or Oregon!  
360.393.4923  
watertecna.com

**890 Packing/ Processing Eq.**

Used Super Sacks. Used once. Stovepipe Top: \$2. Opened Top: \$3. Salem, OR. 503-932-8598

**893 Logging Equip.**



Paramount Ironworks has new brush rakes. We can help your land clearing/ clean up operations. The 8ft rake pictured will fit a variety of dozers and has 1"AR400 rippers, \$1750 and up. If you need something different, we offer custom fab & mobile welding. Let us know how we can help you. Eugene, OR. 541-321-3654

Wanted to Buy: used log skidder. 541-258-5422

**894 Sawmill Equip.**

WANTED: Mobile Dimention, Mighty Might or Timber Champ Circular Sawmills. Any age or condition. Have Cash. Will travel. Klamath Falls OR. 530-905-2250

**896 Forklifts**

**WANTED**  
FORKLIFT WANTED: 3000 TO 5000lb capacity. Pneumatic or solid pneumatic tires. Under 89" height. \$7000 max. Call Greg 503-434-0119

**899 Heavy & Indust. Eq.**

**QUALITY USED EQUIPMENT & ATTACHMENTS**  
2005 John Deere 310G Backhoe \$31,500  
FEATURES:  
• 5,354 Hours  
• Ext-A-Hoe  
• 18" Bucket  
SPECIFICATIONS:  
• HP: 73

2017 Cat 303.5E2 CR Mini Excavator - \$35,000  
FEATURES:  
• Blade  
• 18" Bucket  
• Hydraulic Thumb  
SPECIFICATIONS:  
• HP: 23

American Tractor  
Call Cameron Noble or Eric Hunt  
CENTRAL POINT, OR  
855-423-1200  
www.amtractor.com

**896 Forklifts**



2017 Yale: 360K capacity. New rubber. 10K hours. 8ft. forks. Hydraulic fork positioners. Side shift, 183" upright 2 stage mast. Cummins 5.9. AC, full cab, \$85,000. Gaston, OR. 503-789-3726

Forklift for tractor: 3 point, 3 stage, \$600. Arlington, OR. 541-980-4234

**899 Heavy & Indust. Eq.**

**Jaw Crusher Plant 32"x42"**. With a separate 32"x42' apron feeder. Both are portable with heavy duty hydraulic legs. Good tires, \$150,000. Oregon. 541-954-4808

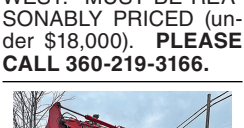


Compactors: 4'x4', \$5000. 5'x5', \$7500. Salem, OR. 503-559-3186

**RETIRING**  
Pile Driver: Fits 350, 450, 550 John Deere sized dozers, good condition, 13ft leads, 1100lb hammer, \$2500 OBO. John Deere backhoe bucket, 36in wide, \$300 OBO. LB 4 slope laser level. Like new condition, \$1500 OBO. Langley, WA. 360-321-1624

**REPLACEMENT DECAL SETS**  
Construction, Forestry & Ag Equipment. Fast, Knowledgeable, Reliable Service. 215-536-5339 email: info@CustomServicesCompany.com  
Thousands of sets, Old & New, in our digital inventory. www.QuipCal.com

**(2) TD9 Crawlers:** both are parts CAT, 1 good engine, rebuilt steering clutches, 1 blade, \$2500/ pair. 1 heavy duty brush blade, \$1000. Coos Bay, OR. 541-267-4794



Linkbelt 130LX Excavator: Hydraulic Thumb, Hendrix Hydraulic, Quick Change, Auxiliary Hydraulics. Dig & Clean Up Buckets. Asking \$39,950. Sandy, OR. Call Pepe: 503-544-3232; Call Pat: 503-407-9062

Time to Retire. Excavation/ Delivery Business. Serving Central Oregon for over 30 years. Business and equipment, \$150,000. 541-480-7363

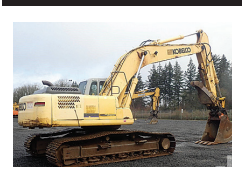


John Deere 690B Trackhoe excavator, \$22,000. Hobbs 28ft steel end dump trailer, \$6000. Elgin, OR. 541-437-8181

Unitrac Truck Scale. Steel deck 90x10. 1 owner. Low profile portable 3 section. Salem, OR. 503-910-4010 westernag@msn.com

**CASE INDUSTRIAL PARTS**  
We sell genuine, after market, and used CASE parts at discount prices nationwide.  
Call For Free Catalog.  
**CENTRAL EQUIPMENT**  
AFTER MARKET & USED PARTS  
Medford, OR  
(888) 593-8749

**899 Heavy & Indust. Eq.**



2007 Kobelco SK290LC Excavator. Hydraulic Thumb and Quick Change, Dig Bucket. Asking \$39,950. Sandy, OR. Call Pepe: 503-544-3232; Call Pat: 503-407-9062



John Deere 120C Excavator: Hydraulic Thumb, Wedge Coupler. Dig and Clean up Bucket. Asking \$44,950. Sandy, OR. Call Pepe: 503-544-3232; Call Pat: 503-407-9062



Hydro Ax #520: Original 453 Detroit. Well Maintained. Extra blades, parts pump, factory winch. Can oscillate and articulate, \$20,000. Portland, OR. 503-201-7677



John Deere 690B Trackhoe excavator, \$22,000. Hobbs 28ft steel end dump trailer, \$6000. Elgin, OR. 541-437-8181

1942 Number 16 Clipper Cleaner with numerous screens Operates. Make an offer. Amity, OR. 503-314-3382

1959/ 1960 Allis Chalmers Rotobaler. Parts only. Gear box, good shape. Athol, ID. 208-691-6411

**902 Farm Equip. Parts**

**NEW & USED OLIVER & CLETRAC**  
Wheel & Crawler Parts Are Our Specialty  
**ZIMMERMAN OLIVER-CLETRAC**  
1450 Diamond Station Rd. • Ephrata, PA 17522  
**717-738-2573**  
Fax 717-733-3529  
www.olivercletrac.com

**Nyssa Tractor & Implement**  
Our yard has 5 miles of road, the rest is farm machinery & parts.  
www.nyssatractor.com  
Toll Free (833) 372-4020  
Nyssa, OR

**BIG TRACTOR PARTS, INC.**  
~ GEARED FOR THE FUTURE ~  
**STEIGER TRACTOR SPECIALIST**  
• 1. We are your source for new & used Steiger drivetrain parts Series 1-9300 Series.  
• 2. We rebuild Spicer manual transmissions, Fugli power shift transmissions, dropboxes & axle with ONE YEAR WARRANTY!  
• 3. We now rebuild computer control boxes for Steiger tractors 1982-1999.  
**800-982-1769**  
www.bigtractorparts.com

**907 Nursery Equip. & Supplies**

**907 Nursery Equip. & Supplies**

**907 Nursery Equip. & Supplies**

**907 Nursery Equip. & Supplies**

**907 Nursery Equip. & Supplies**

**907 Nursery Equip. & Supplies**

**907 Nursery Equip. & Supplies**

**907 Nursery Equip. & Supplies**

**A Variety of Spreaders for Springtime!**

**Bait Spreader**  
The fast and efficient way to spread baits and minerals  
Stock Code: GK670

**ATV Spread Pro**  
This new product is lightweight, durable, and easy to operate  
Stock Code: GK55

**3-Point Dry Box**  
Quickly attaches to your tractor for fast efficiency  
Stock Code: GK679-01

**Tow Behind Dry Box with Custom Trailer**  
Easy maneuvering for efficient fertilizing  
Weight: 1917 lbs.  
Hydraulic Flow: 16GPM  
Stock Code: GK669-3

**GK MACHINE, INC. DONALD OREGON 503-678-5525**  
**www.GKMachine.com**

