

Classifieds



Capital Press

EMPOWERING PRODUCERS OF FOOD & FIBER

2870 Broadway St. NE P.O. Box 2048
Salem, OR 97303 Salem, OR 97308

OMISSION & ERROR: Capital Press will exercise due care to prevent omissions and mistakes, but its total liability for any error, in any advertisement published, shall not exceed the proportionate space in which the error occurred. Credit, when allowable, will apply to the first insertion only.

800-882-6789 | View all classified ads for free at CapitalPress.com

101 Legal Notices | 210 Trucks | 210 Trucks | 210 Trucks | 210 Trucks | 210 Trucks | 210 Trucks | 210 Trucks

LEGAL
PUBLIC NOTICE
The Oregon Processed Vegetable Commission will hold public hearings to amend OAR 647-010-0010 to change the assessment rates for the 2021 crop and to approve the proposed 2021-2022 fiscal budget. The hearings start 6:35 p.m. April 28, 2021 and will be held via Zoom Video Conferencing. Any person wishing to comment on the budget is welcome to do so either orally or in writing. A copy of the proposed rule amendments and budget are available for public inspection at www.opvc.org. Contact opvcresearch@gmail.com prior to April 28, 2021 to request a link for the video meeting and/or to submit a written comment. Please include your name and farm in your emailed requests. 5239486-1



1982 IHC 1900 Dump Truck. 7 to 8 yard. 4x4. DT466 Diesel. Allison Automatic 2 speed transfer. 132,000 Actual Miles. Good rubber. One owner former Municipal truck. Runs and works like new, \$17,900. Located in Twin Falls ID. Call 208-613-0050



1996 IHC 4900 15ft. flat-bed truck with removable 4 ft. stake sides and 3000 Lb. liftgate. T444E, 7.3 L. Turbo Diesel with 5 and 2 trans. 103,000 ACTUAL MILES. Brand new radial tires. 26,000 GVW. NO CDL. One owner truck from Cal Fire. Clean, well maintained and operates like new. \$14,900. Located in Twin Falls ID. Call 208-613-0050



2016 F350 Diesel Dual-ly: flatbed, 4 door, 100K miles, 5th wheel hitch. 6 speed automatic. Fuel tank/ tool box. Excellent Condition, \$39,999. Lyle, WA. 509-767-1539



2007 IHC 9200i tandem axle semi tractor. CAT C13 Acert 435HP Diesel. Eaton Fuller Auto Transmission. AC, CC, PW, PM, Jake Brake. 70% 11/22.5 radial tires. Very clean and well maintained fleet vehicle with lots of life left, \$16,900. Located in Twin Falls ID. Call 208-613-0050



1995 Ford F8000 Tandem Axle Vactor Truck. Vac Con V311tha unit with rodger. John Deere auxiliary motor. 60,000 GVW. Cummins Diesel. Allison AT. Differential Lock. AC, PS. 65,000 ACTUAL MILES. Former Municipal unit that is well maintained and very clean. Work ready, \$26,900. Located in Twin Falls ID. Call 208-613-0050



2001 Freightliner Transfer Dump Truck. 15 yard main with HiLift airgates on truck and trailer. CAT C12 Diesel. 410HP. 13 speed. Jake Brake, CC, AC, PW. 80% 11/22.5 radials on alloy wheels. This one owner truck is spotlessly clean and has been well maintained. NO RUST, NO DAMAGE. Runs drives and operates like new. \$34,900. Located in Twin Falls ID. Call 208-613-0050



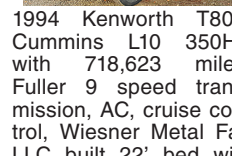
1973 AM General Firetruck. All original military specifications including emergency equipment. 6x6, 2 speed transfer. 5 speed transmission. Multifuel Diesel. Near new tires. 32,000 Actual Miles. 1200 gallon tank. (2) 1.5in. reels and hose. Water cannon. Very clean, and everything works like new, \$13,900. Located in Twin Falls ID. Call 208-613-0050



2004 IHC 7400 Dump Truck with DT530 Diesel, 300HP. Eaton 10 speed Transmission. 37K. GVW. AC, Cruise, Jake brake. Plumbed for trailer. 70% 12/22.5 radials. Low miles. One owner former State agency. Very clean and well maintained. Ready to work, \$19,900. Located in Twin Falls ID. Call 208-613-0050



1996 Ford LN7000 with mechanic's bed, 6500 LB. All hydraulic Auto Crane, 160 CFM Sullair Rotary screw air compressor, PTO Drive and Honda 3500 Watt Gen-Set. Cummins 5.9 Diesel. Allison Auto transmission. PS, AC. 80,000 ACTUAL MILES. One owner truck from a large Southern California County. In near new condition, \$15,900. Located in Twin Falls Idaho. Call 208-613-0050



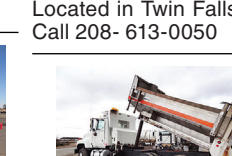
1994 Kenworth T800: Cummins L10 350HP with 718,623 miles, Fuller 9 speed transmission, AC, cruise control, Wiesner Metal Fab LLC built 22' bed with 6' racks. Harsh hoist, aluminum wheels, Hendrickson spring rears. \$54,000. Aumsville, OR. Call 503-551-1793



1974 Kenworth: 318 Detroit, 10 speed, spring over walking beam, 80% rubber. Working everyday, \$9750. Enterprise, OR. 541-263-0132



2003 Freightliner FL70 cab and chassis. 330HP CAT 3126 Diesel. Allison 6 speed. AT with retarder and PTO capable. PS, AC. 16ft. of straight 11in. frame. Brand new radials. 33,000 GVW. Former California State vehicle that is as clean as new and has had excellent fleet maintenance. Truck is in like new condition, \$14,900. Located in Twin Falls ID. 208-613-0050



2005 IHC Paystar 5000i tandem dump truck. 14ft. Stainless Steel dump bed with 28in. live chain floor with removable conveyor cover and regular tailgate with metered gate discharge. Cummins ISX 435HP Diesel. Eaton 13 speed. PS, AC, CC, Jake. Brand new 11/22.5 radials. Bed alone is \$70K new. One owner former State truck that is in like new condition. Well maintained! \$39,000. Located in Twin Falls ID. Call 208-613-0050



1997 IHC PayStar 5000i. 6X6 with HI-LO and 65ft. Simon Telelect Crane. 48,000lb. lift. Cummins 10.8L. Diesel. Allison Automatic. PS, AC, CC, Jake brake. 18K. front axle. Hendrickson rears. 150K. ACTUAL MILES. New factory Cummins ISM Diesel and near new 22.5 radials. Former Arizona Power Authority vehicle that has been meticulously maintained, is rust free and runs, drives and operates like new. Located in Twin Falls ID. \$39,900. Call 208-613-0050



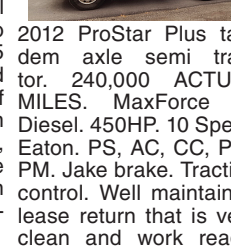
1997 IHC 4700 Lo Pro with 9" hydraulic pressure post hole digger. Articulated boom. DT466 Diesel. Allison Automatic. PS, AC. Like new rubber. Very clean one owner former County owned machine that needs nothing and is work ready, \$13,900. Located in Twin Falls ID. Call 208-613-0050



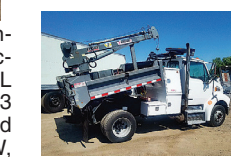
1997 IHC 2564 Water Truck. 2500 gallon, 2 heads; front and rear. Cummins M-11, 370HP. 13 speed. PS, AC, Side-locks. 64,750 GVW. Good 22.5 Radials. One owner former State vehicle that has been well maintained and is work ready, \$16,900. Located in Twin Falls ID. Call 208-613-0050



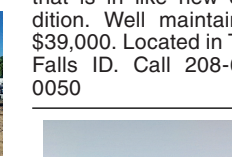
2002 IHC 4900 Cab & Chassis. DT466 Diesel. Allison 6 speed automatic, retarder. PS, AC, CC. 33,000 GVW. Will accept PTO and 16ft. to 18ft. bed. Good 11/22.5 radials. Formerly owned by California Dept. of Forestry and has been well maintained. Runs, looks and drives like new, \$14,900. Located in Twin Falls ID. Call 208-613-0050



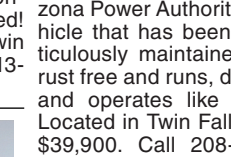
2012 ProStar Plus tandem axle semi tractor. 240,000 ACTUAL MILES. MaxForce 13 Diesel. 450HP. 10 Speed Eaton. PS, AC, CC, PW, PM. Jake brake. Traction control. Well maintained lease return that is very clean and work ready, \$19,900. Located in Twin Falls ID. Call 208-613-0050



2009 Sterling Acterra with 10ft. dump bed, 3500 LB. Autocrane and arrow-board. 6.7 Cummins diesel, Allison AT. PS, AC, CC, PW. 23,000 GVW. 245/19.5 tires are like new. 50,495 ACTUAL MILES. One owner former large City vehicle that is in like new condition. Work ready, \$24,900. Located in Twin Falls ID. Call 208-613-0050



2001 IHC 2574 tandem axle cab and chassis. N-14 Cummins, 13 speed. 112,000 ACTUAL MILES. Jake, PS, AC, PS. Traction lock. 164" cab to trunnion. Double frame full length. Hendrickson spring rears. 64,000 GVW. Near new 22.5 Radials. Former California DOT truck that has had excellent maintenance. Runs, drives and operates like new. NO RUST! \$29,000. Located in Twin Falls ID. Call 208-613-0050



1990 IHC 2674 cab and chassis. NTC400 Eaton 8LL transmission, PS, AC, Jake brake. Front mount PTO pump with tank. Double frame. Hendrickson spring rears. G11/22.5 Radials. Former County truck that has been well maintained, is very clean and work ready, \$14,900. Located in Twin Falls ID. Call 208-613-0050

204 Automobiles



2006 Lincoln Town Car-Executive Beautiful Pearl White with Camel Landau top and rare sunroof! Car is in near new condition. Every available option, \$6500. St.Helens, OR. 503-369-1503

DO NOT FORGET
Call in your classified ad by Wednesday: 10:00...Display (bordered) Ad Noon...Line Ad
Toll free 1-800-882-6789 Fax (503) 370-4383 CapitalPress.com

Capital Press CLASSIFIEDS
1-800-882-6789 CapitalPress.com

LINE CLASSIFIEDS
Call Toll-Free 1-800-882-6789 FAX: (503) 370-4383 Deadline Wed. at Noon (Holidays may differ) CapitalPress.com

Your ad here! 800-882-6789
adservices@capitalpress.com

Newsday Crossword

ACROSS
1 Baseball hats
5 Like a knife's edge
10 Minor quarrel
14 Offended
15 Loses color
16 Sport on horseback
17 Two-tone cookie
18 Bit of land in the ocean
19 Underground plant part
20 Time between salary checks
22 Waist circlers
23 Canonized person
24 Prepare, as a gift
25 Andy Warhol genre
28 Stayed out of sight
31 At the drop of _ (quickly)
32 Sound like a bull
34 Top playing card
35 Sharp knock
36 Wild West bars
38 Thumbs-up vote
39 Before, in poems
40 Apply, as pressure
41 Sign of sorrow
42 Ruby or crimson
44 Rosebush stickers
46 Barnyard oinkers
47 Sharply inclined
49 Untrue
51 Portable electricity source
55 "That's too bad!"
56 Police-car wailer
57 Pressing appliance

DOWN
1 Pork serving
2 Mystical glow
3 Hunter's quarry
4 Pays a visit to
5 Enthusiasm
6 Entertains at home
7 Dole out
8 Marsh plant
9 Seattle clock setting: Abbr.
10 Jam or butter
11 Billiards participant
12 Oodles
13 Little kids
21 Corn portion
22 Londoners, informally
24 Advise caution to
25 Used a vegetable peeler
26 Scarlett of *Gone With the Wind*
27 Picnic dinnerware
28 Pirate's haul
29 Pacific or Atlantic
30 Has on
32 Winter glider
33 Neither here _ there
36 Twilled suit material
37 Woodcutters' tools
41 Onion or mushroom, on a pizza
43 Smooched
44 Itsy-bitsy
45 That woman
47 Separates into stacks
48 Baby bird's noise
49 Short-lived trends
50 Hand-gel additive
51 Cone-bearing tree
52 Opera solo
53 Young male horse
54 Leg joint
56 Occupied a chair

1	2	3	4	5	6	7	8	9	10	11	12	13
14				15					16			
17				18					19			
20				21					22			
23				24								
25	26	27					28			29	30	
31				32	33					34		
35				36	37					38		
39				40						41		
42				43				44	45			
46				47	48							
49	50						51			52	53	54
55					56					57		
58					59					60		
61					62					63		

Answers in classification 510

PASS THE PEAS by Gail Grabowski
Edited by Stanley Newman
www.stanxwords.com

KENWORTH T800 4-AXLE CHASSIS

2 TRUCKS @ \$55,000
Cummins ISX engines, 18-spd. trans. (RTL018918B), single spd. Eaton rear-ends 4:10 or 4:11 gears w/locker, HENDRICKSON HAUL-MAX WALKING BEAM SUSP.

#66 R383800 2003, DSP-463P rears, 271" WB, 475hp..... \$55,000
#94 R066820 2004, DSP-463P rears, 270" WB, 475hp..... \$55,000

CLEAN AND IN EXCELLENT SHAPE!
MAINTENANCE RECORDS - REGULAR OIL SAMPLES

Thomas H. IRELAND INCORPORATED
More info: www.irelandtrucking.com
Call Charles Ireland 541-863-1501
Myrtle Creek, OR

CLASS 8 TRUCKS
509-534-9088

2009 Sterling Service Truck
Cummins, 9 spd., diff. lock, IMT 3820 Crane, Miller Welder/compressor, hydraulic reel, liftgate, water tank with pump, fuel storage, Hyrail gear, low miles
CALL

2000 Freightliner FLD120
12.7 Detroit Series 60, 430/500, 10 spd., 3.90 ratio, air ride, LOW MILES 292,453. **CALL**

(2) 2010 International Prostars
Cummins ISX 475, Jakes, 10 spd., 3.70 ratio, air ride, no DPF, no EGR. **\$24,900**

2006 International 7600
Cummins 385 hp, Jakes, 10c trans., 4.33 ratio, doubleframe, Hendrickson walking beam, 24' flatbed with forklift mount
CALL

Bomag Roller. 84" Single Smooth Drum.....\$25,000

Larson Sweeper. Heated Cab. Diesel Power.....\$5,500

Lincoln Arc Welder. Sam 400.....\$5,900

2004 Kenworth 3,000 gal. Propane Truck. 3126 Cat & A/T.....\$19,500

1999 Freightliner FL-70 Crew-Cab. 4,200# Crane. 3126 Cat & 8-Spd.....\$17,900

1990 JCB 530B Extended Reach Fork. 8,000 lb. Cap., 36", Perkins Diesel.....\$25,500

2006 Ford F-550 Utility w/3200lb Crane. Extra-Cab, 6.0L P.S. & A/T.....\$14,900

2005 Ford F-450 12' Flatbed Dump. 6.0L P.S. & A/T.....\$21,900

ChambersMotorCo.com
(503) 663-7200 • Boring, OR